

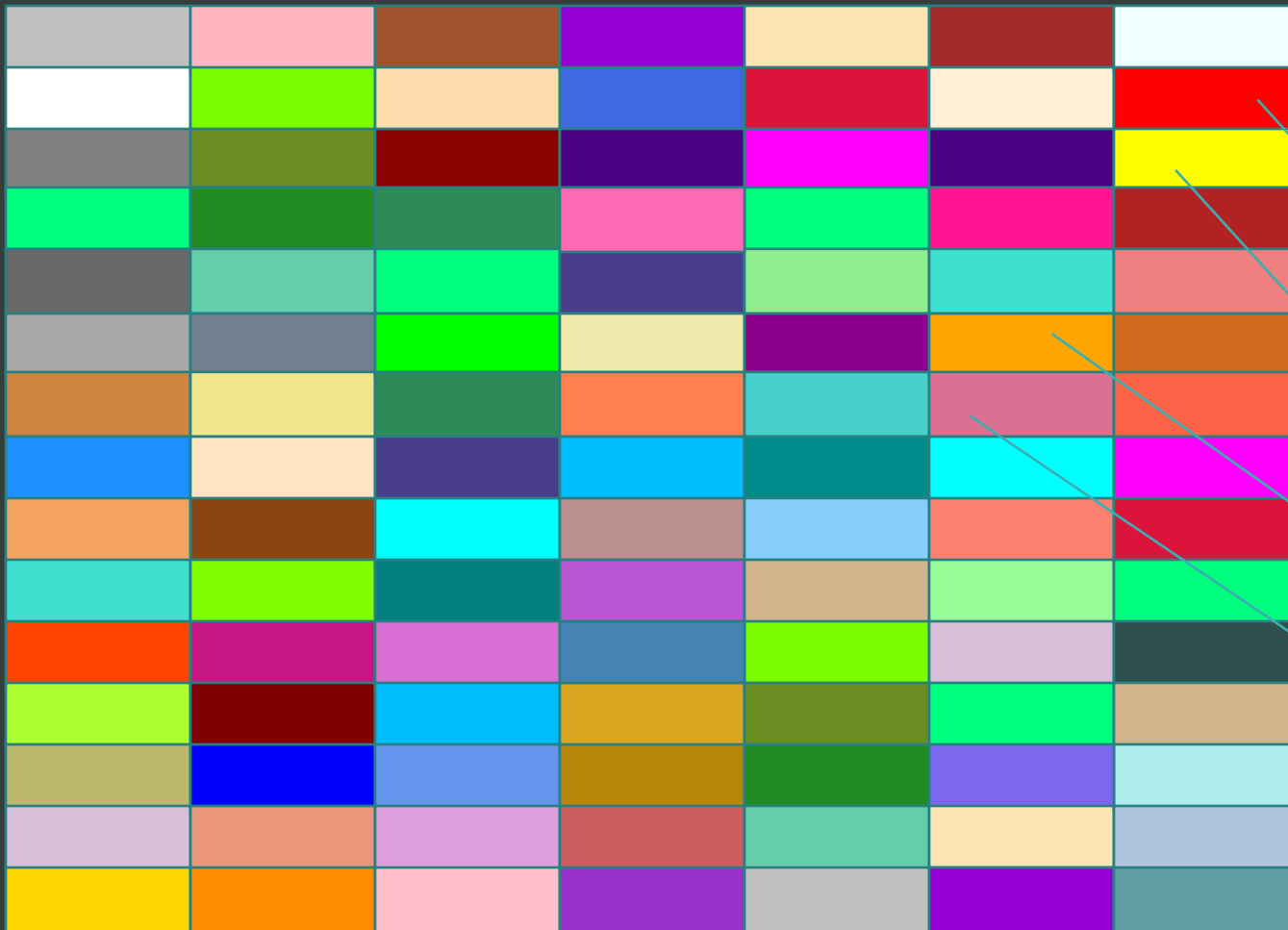
CAN WE ALL USE THE SAME COLORS?

IS THERE A WAY FOR COLLABORATION ON WARNING COLORS AMONG ALL PARTIES IN THE
WEATHER ENTERPRISE

METEOROLOGISTS
BRAD PANOVICH & SARAH FORTNER
NBC CHARLOTTE



What is this?



- NWS utilizes over 100 different colors for alerts.

Tornado Warning

Tornado Watch

Severe Thunderstorm Warning

Severe Thunderstorm Watch

The Problem: The same watches, warnings & advisories have different colors in different places

SPC PAGE

- TORNADO WATCH

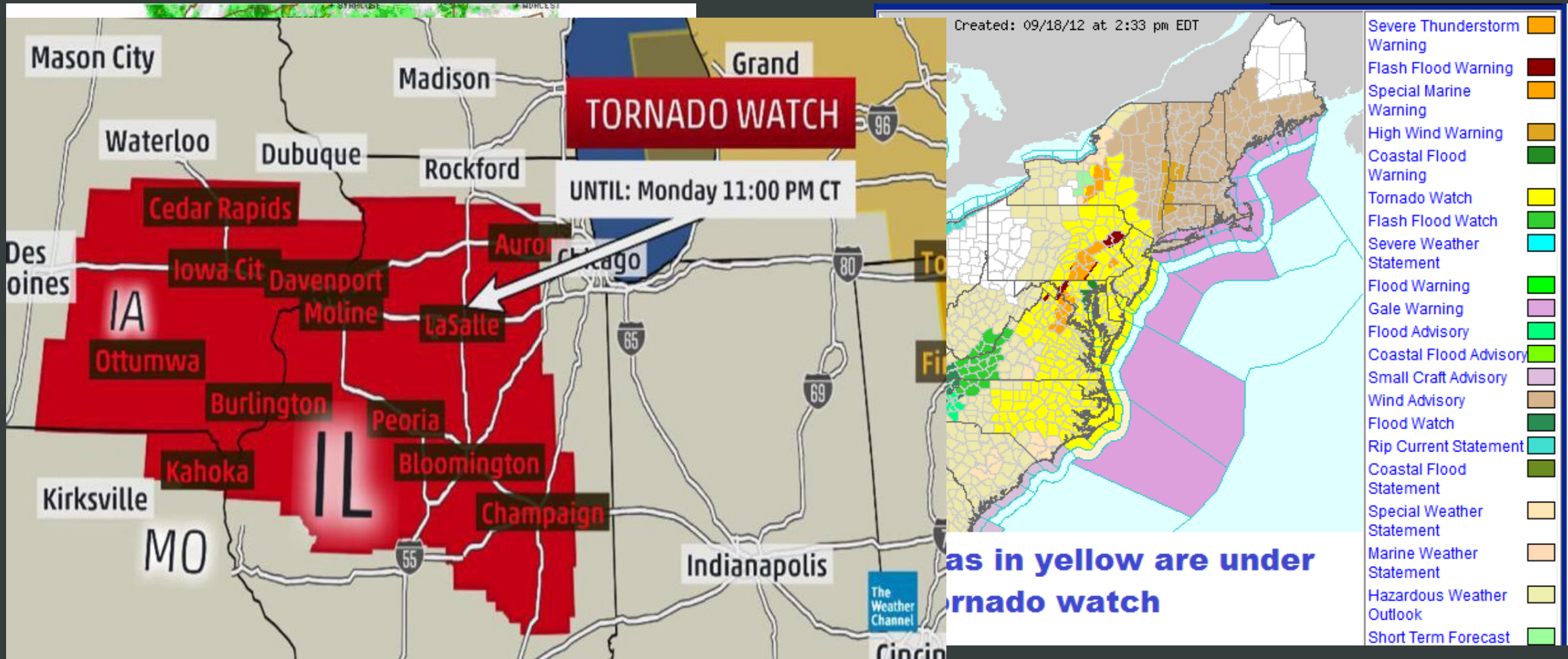


LOCAL NWS PAGES

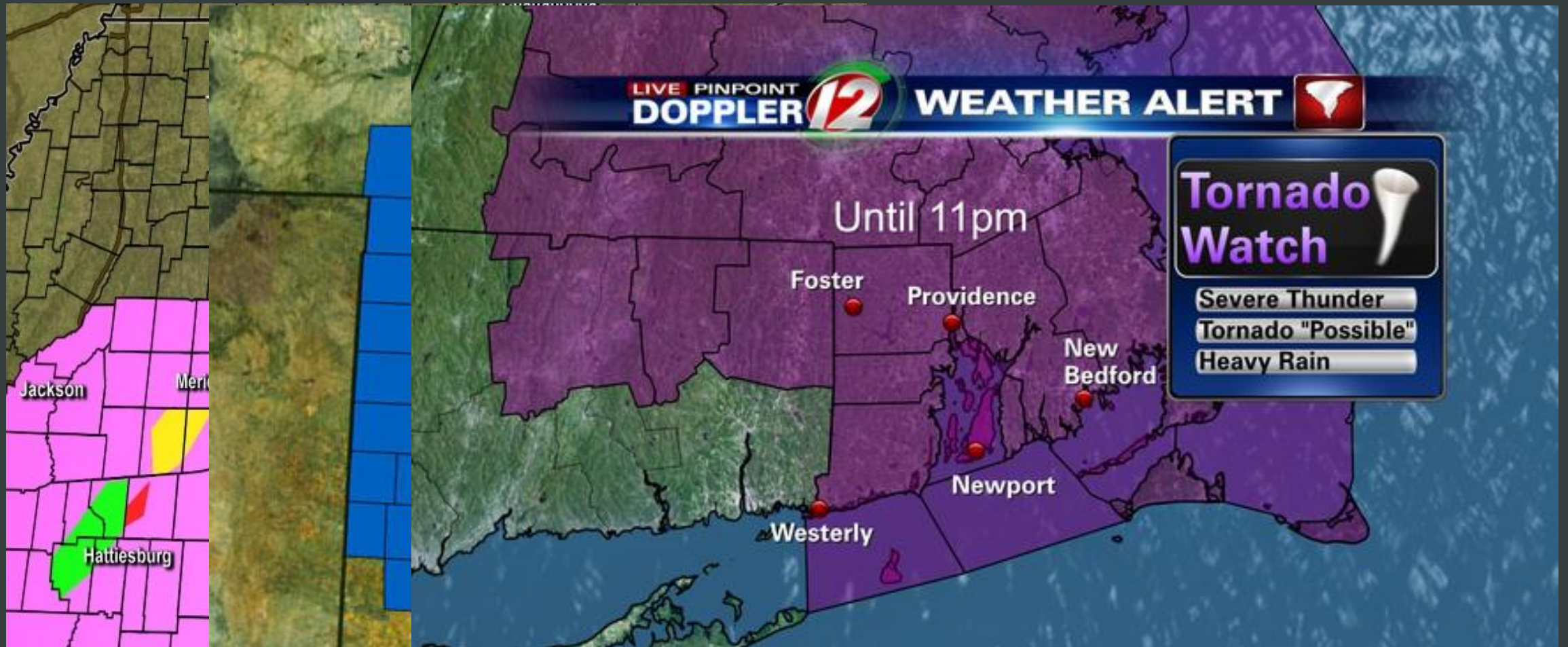
- TORNADO WATCH



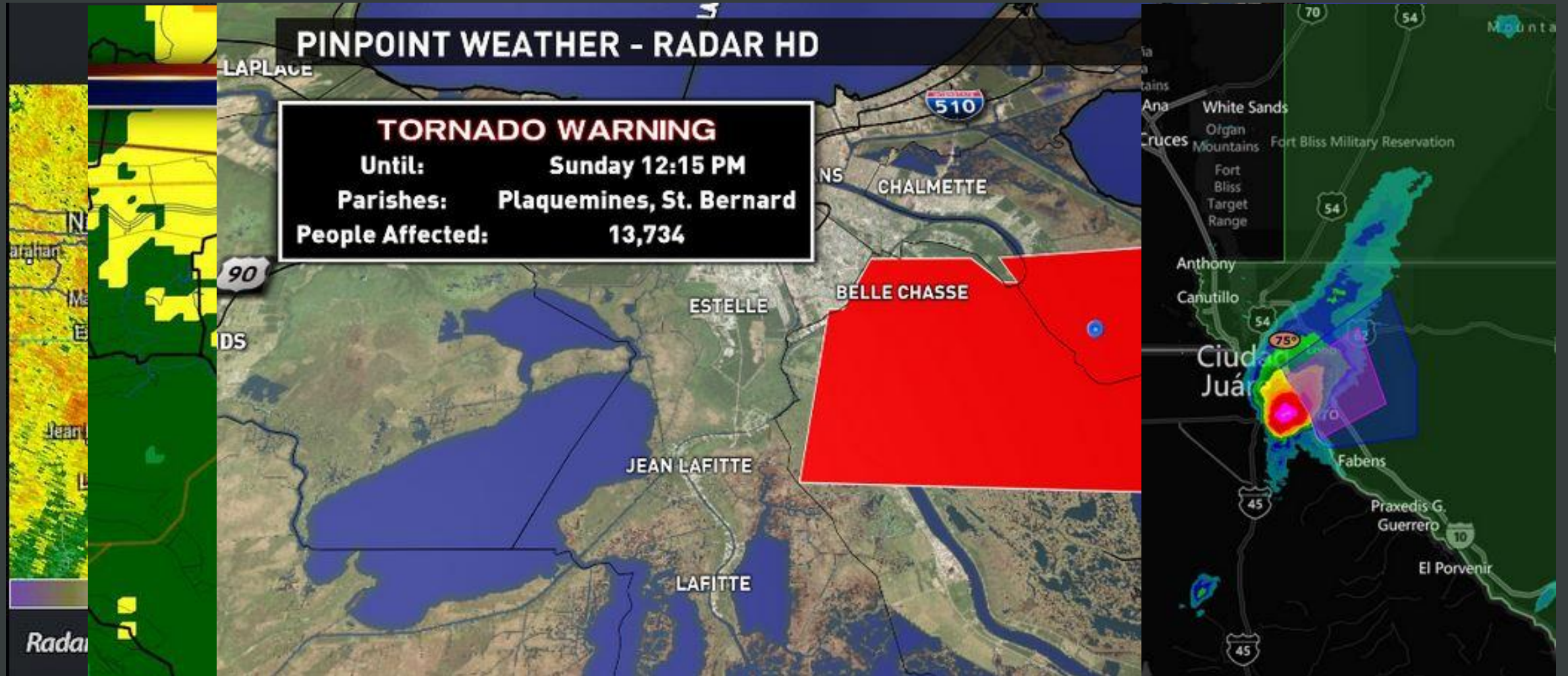
Tornado Watch



Tornado Watch



Tornado Warning





WIND IMPACTS

#MATTHEW

LOW

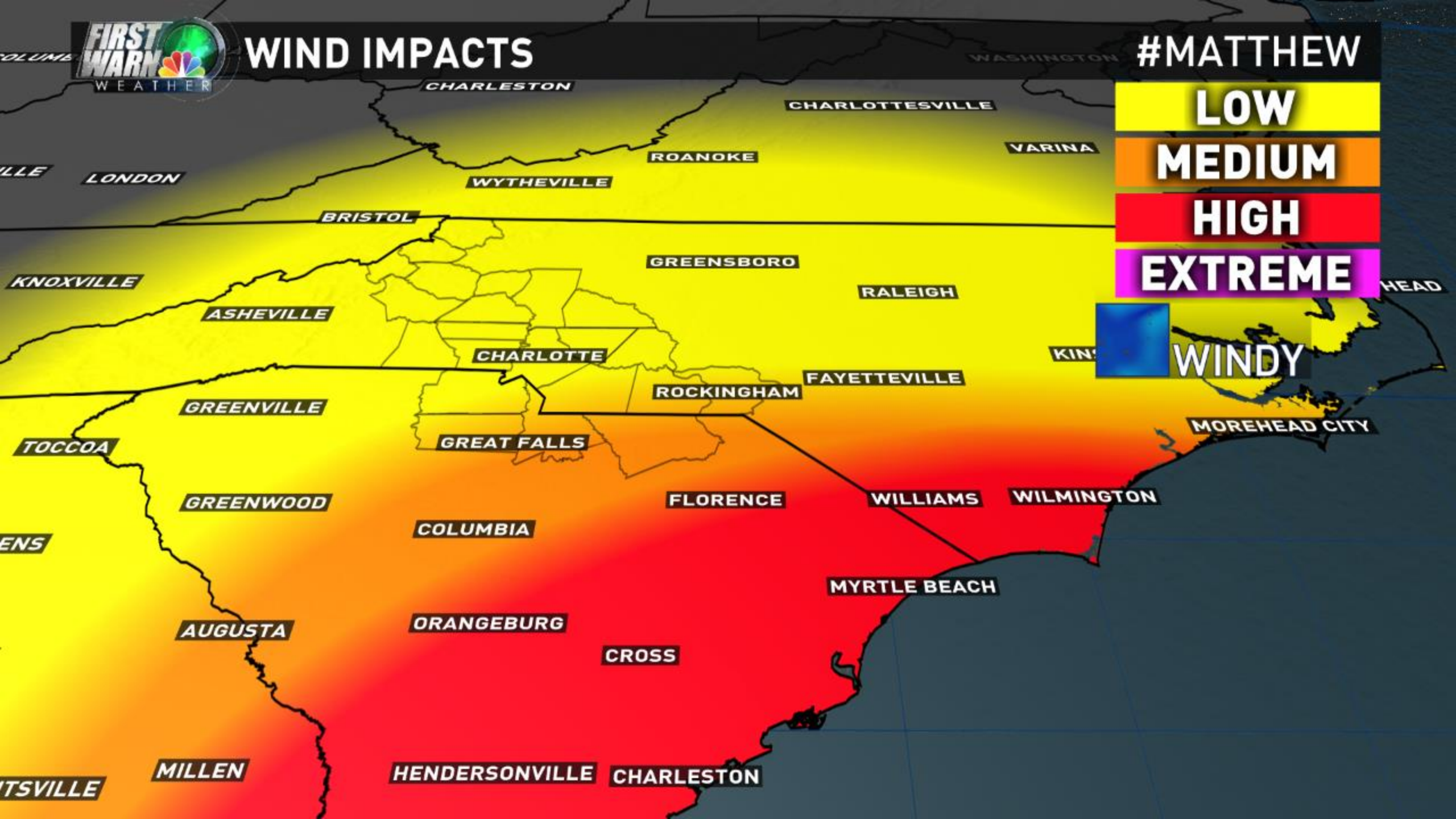
MEDIUM

HIGH

EXTREME



WINDY





HERMINE IMPACTS-CHARLOTTE AREA EAST

IMPACTS

LOW

MED

HIGH

EXTREME

DAMAGING WINDS



TORNADO



RAIN FLOODING



POWER OUTAGES



POWER OUTAGES



RAIN FLOODING





RAIN IMPACTS

#MATTHEW

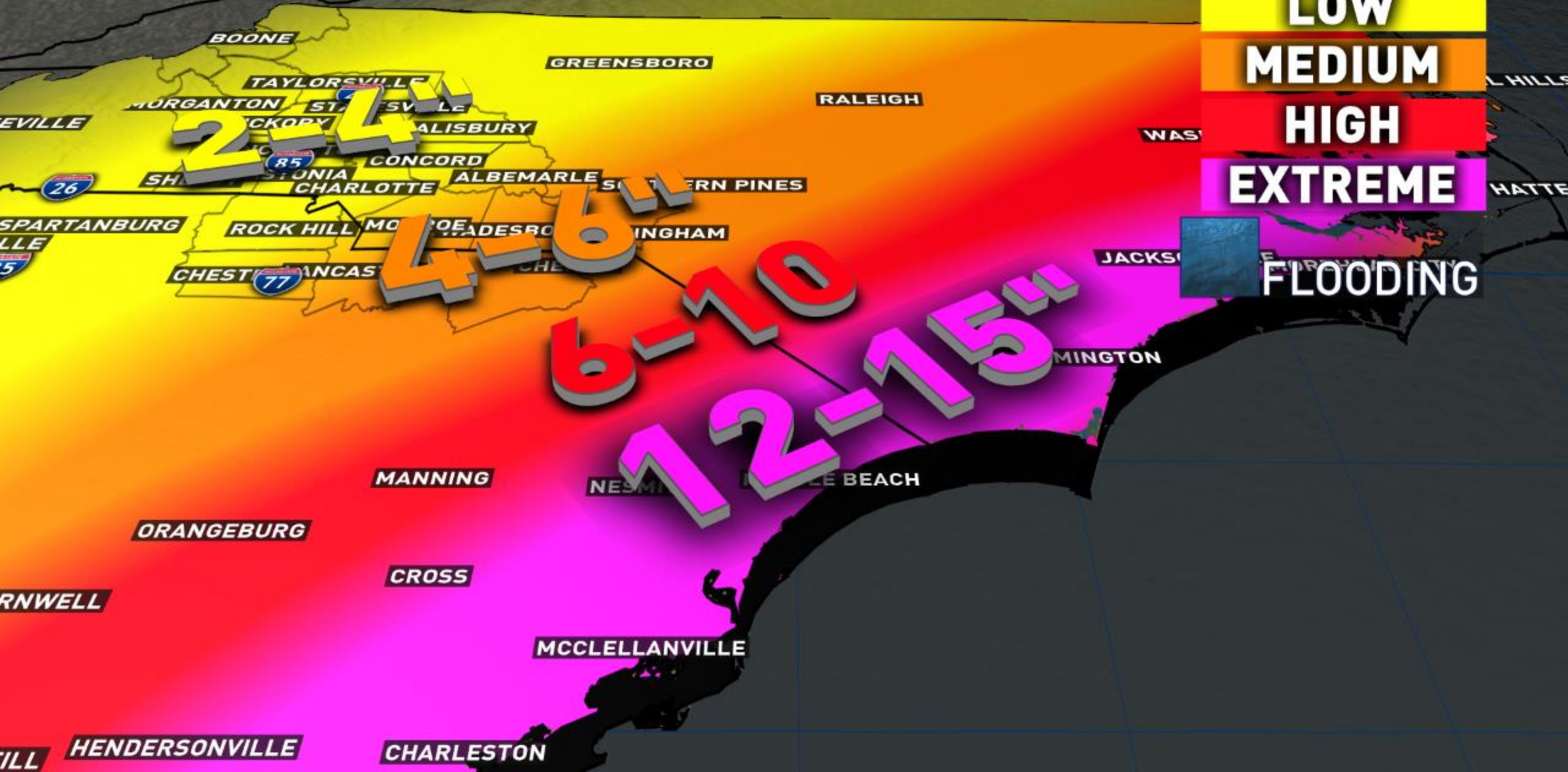
LOW

MEDIUM

HIGH

EXTREME

FLOODING



WINTER STORM IMPACTS-MONDAY

IMPACTS	LOW	MED	HIGH	EXTREME
SNOWFALL	10%	0%	0%	0%
ICE	100%	10%	0%	0%
POWER OUTAGES	20%	0%	0%	0%
DANGEROUS TRAVEL	100%	10%	0%	0%

THE NATIONAL WEATHER SERVICE IS ALREADY EXPERIMENTING WITH THIS SAME CONCEPT.



Wind Threat - NWS Melbourne FL

[Wind Threat](#)

[Download KML](#)



Storm Surge Threat - NWS Melbourne FL

[Storm Surge Threat](#)

[Download KML](#)



Flooding Rain Threat - NWS Melbourne FL

[Flooding Rain Threat](#)

[Download KML](#)



Tornado Threat - NWS Melbourne FL

[Tornado Threat](#)

[Download KML](#)

OTHER NWS EXAMPLES

Hurricane Hazards Threat Meter


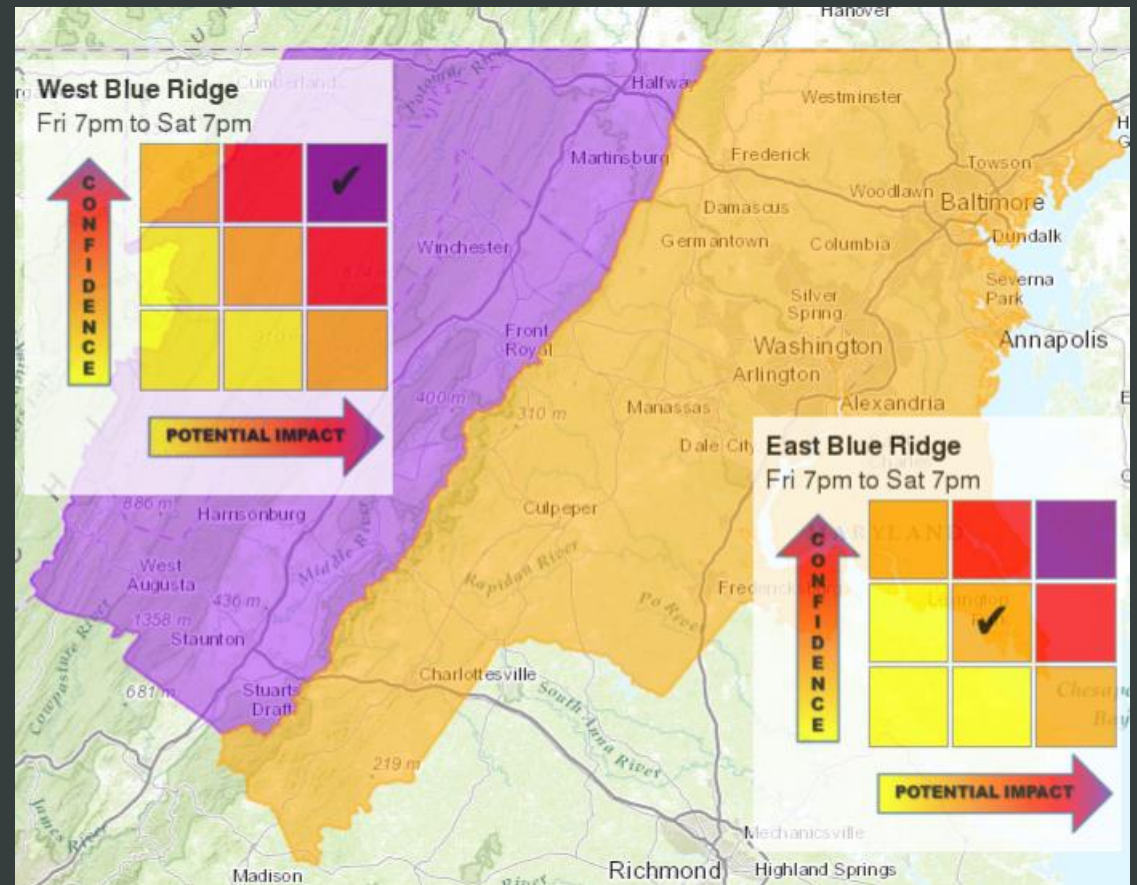
Specific to East Central Florida

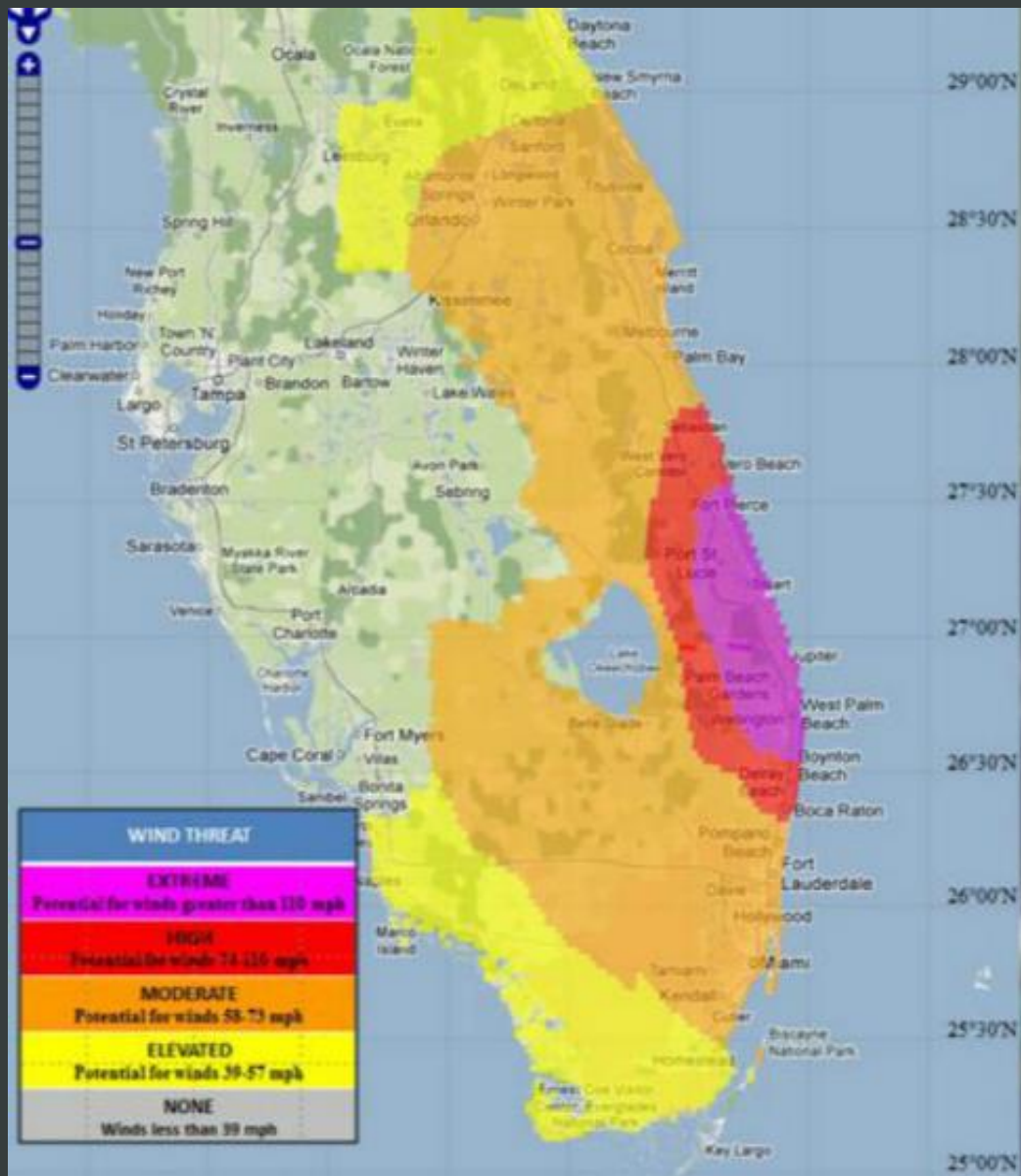
	Wind	Surge	Flood	Tornado
Extreme				
High				
Moderate				
Elevated				
Little to None				

Storm: _____

Issued: _____

Be Sure to Refresh your Browser



WIND THREAT
EXTREME Potential for winds greater than 110 mph
HIGH Potential for winds 74-110 mph
MODERATE Potential for winds 58-73 mph
ELEVATED Potential for winds 39-57 mph
NONE Winds less than 39 mph

Wind Threat	Potential Wind Impacts
EXTREME Threat for wind greater than 110 mph	DEVASTATING TO CATASTROPHIC To be safe, aggressively prepare for the potential of devastating to catastrophic wind impacts from major hurricane force wind of equivalent Category 3 intensity or higher.
HIGH Threat for wind 74-110 mph	EXTENSIVE To be safe, aggressively prepare for the potential of extensive wind impacts from hurricane force wind of equivalent Category 1 or 2 intensity.
MODERATE Threat for wind 58-73 mph	SIGNIFICANT To be safe, earnestly prepare for the potential of significant wind impacts from strong tropical storm force wind.
ELEVATED Threat for wind 39-57 mph	LIMITED To be safe, prepare for the potential of limited wind impacts from tropical storm force wind.
LITTLE TO NONE Wind less than 39 mph	LITTLE TO NONE No immediate preparations needed; little to no wind impacts.


What if we all used the same colors?


THE FUTURE OF WARNINGS ARE ALL THE SAME COLOR!

Tornado Warning


Valid Until
7:30 PM CST Saturday
December 26, 2015

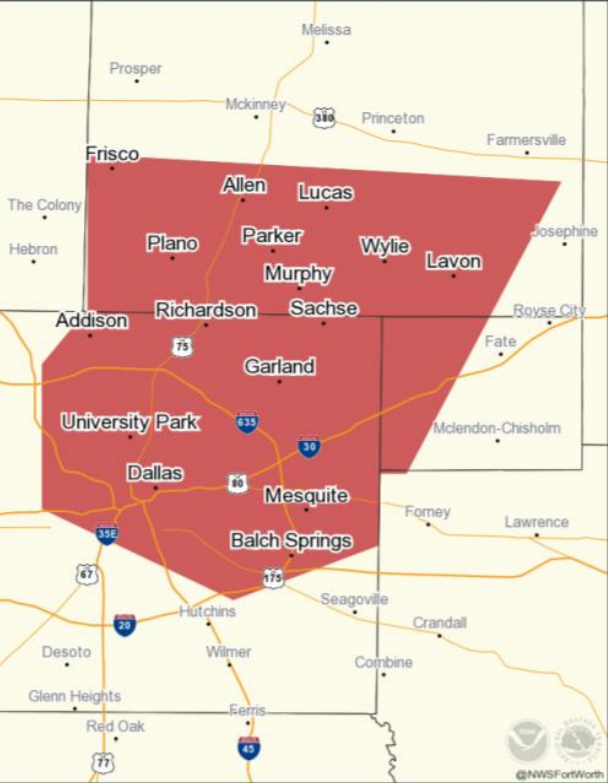
Threat Information

 **HAIL**
Quarter
Sized Possible

 **TORNADO**
Radar Indicated

Impact Information

 Population: 2,265,807
Schools: 579
Hospitals: 51





Map showing the Tornado Warning area in Texas, covering parts of Tarrant, Dallas, and Rockwall counties. Major cities include Frisco, Allen, Lucas, Plano, Parker, Wylie, Lavon, Addison, Richardson, Sachse, Garland, University Park, Dallas, Mesquite, Balch Springs, and Fort Worth. Major highways shown include I-75, I-35, I-40, I-30, I-20, I-175, I-77, and I-45.

Severe Thunderstorm Warning


Valid Until
9:30 PM CDT Thursday
September 10, 2015

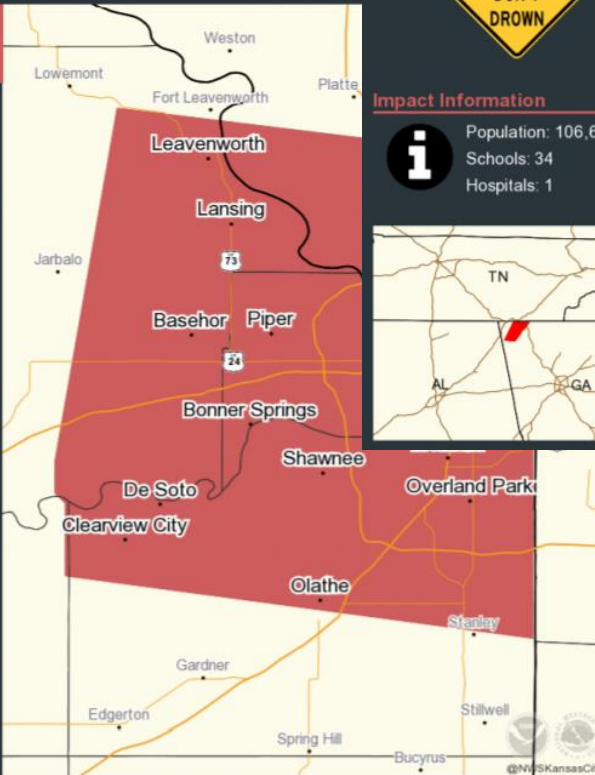
Threat Information

 **HAIL**
Half Dollar
Sized Possible

 **WIND**
Up to
70 MPH

Impact Information


 Population: 755,914
Schools: 220
Hospitals: 20




Map showing the Severe Thunderstorm Warning area in Kansas, covering parts of Leavenworth, Lansing, Basehor, Piper, Bonner Springs, Shawnee, Overland Park, De Soto, Clearview City, Olathe, and Edgerton. Major highways shown include I-70, I-49, I-24, and I-135.

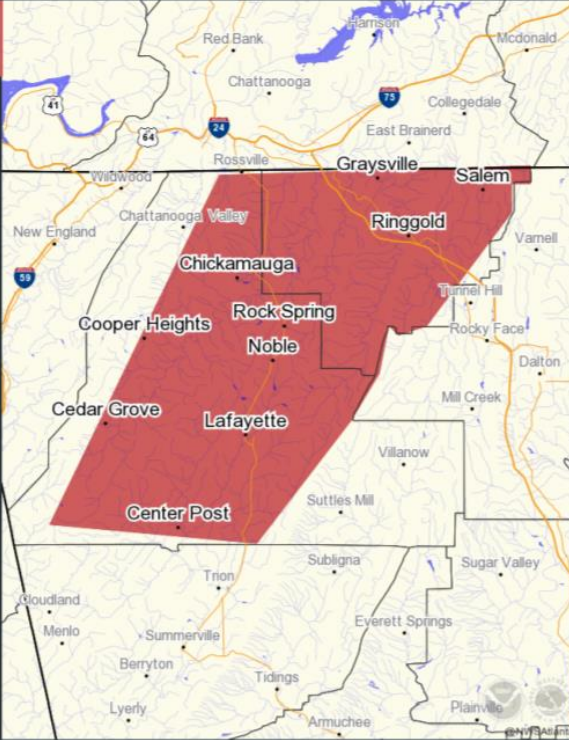
Flash Flood Warning

Valid Until
11:15 AM EST Wednesday
February 3, 2016



Impact Information

 Population: 106,635
Schools: 34
Hospitals: 1



Map showing the Flash Flood Warning area in Georgia, covering parts of Chickamauga, Rock Spring, Noble, Ringgold, and Lafayette counties. Major cities include Ringgold, Rock Spring, Noble, and Lafayette. Major highways shown include I-75, I-24, and I-58.

QUESTIONS, COMMENTS AND DISCUSSION

BRAD PANOVICH @WXBRAD
SARAH FORTNER @SARAHFORTNERWX

