

1990S TORNADO / WATERSPOUT GUIDE

FOR NORTH CENTRAL AND NORTHEAST WISCONSIN



1990S TORNADO / WATERSPOUT GUIDE

FOR NORTH CENTRAL AND NORTHEAST WISCONSIN

BROWN

MENOMINEE

CALUMET

OCONTO

DOOR

ONEIDA

FOREST

OUTAGAMIE

FLORENCE

PORTAGE

KEWAUNEE

SHAWANO

LANGLADE

VILAS

LINCOLN

WAUPACA

MANITOWOC

WAUSHARA

MARATHON

WINNEBAGO

MARINETTE

WOOD

1990S TORNADO / WATERSPOUT REFERENCE GUIDE

GREEN BAY FORECAST AREA TORNADOES / WATERSPOUTS

Event	F	Date			Time		TOR in GRB Service Area
#	Rank	Month	Day	Year	(CST)	Start / End Location	County or Counties
1	1	6	12	1990	18:35	2 W Stratford	Marathon
2	1	6	14	1991	11:55	8 WNW Merrill	Lincoln
3	2	6	27	1991	18:20-18:30	12 WSW Minocqua - Marian Lake	Oneida
4	0	7	28	1991	10:15	Near Rock Island (waterspout)	Door
5	0	7	28	1991	10:15	Near Washington Island (waterspout)	Door
6	0	9	14	1991	18:00	2 W Green Valley	Shawano
7	1	4	20	1992	16:00-16:20	2 SW Arpin - Bakerville	Wood
8	1	5	16	1992	14:30	5 N Junction City	Portage
9	2	5	16	1992	18:10-18:30	4 W Keene - 5 SE Amherst	Portage
10	1	5	16	1992	18:30	2.5 NE Northland	Waupaca
11	1	5	16	1992	19:20-19:30	Kaukauna - 2 SW Wrightstown	Outagamie - Brown
12	0	6	17	1992	12:55	2 NE Denmark	Brown
13	1	7	19	1992	15:54	2 WSW Stratford	Marathon
14	3	8	29	1992	19:10-19:55	1 N Wautoma - 3 SE Poysippi	Waushara
15	1	10	8	1992	16:48	5 NE Wild Rose	Waushara
16	1	10	8	1992	17:12	4 NE Blaine	Portage
17	0	6	8	1993	18:38	2.5 S Spring Lake - 2 W Auroville	Waushara
18	0	6	8	1993	19:15	0.5 E Dakota - 2 S Redgranite	Waushara
19	0	6	8	1993	19:35-19:45	5 SE Redgranite - 3 SE Auroville	Waushara
20	0	6	8	1993	17:35	1 E Pickett	Winnebago
21	0	8	9	1993	20:15	1 N Tripoli	Oneida
22	0	4	24	1994	15:25	3 S Luxemburg	Kewaunee
23	1	4	26	1994	14:55-15:05	1.5 N Conover - 3 SE Land O'Lakes	Vilas
24	2	5	30	1994	20:50-21:16	2 SW Crandon - 1 N Laona	Forest
25	0	7	4	1994	16:49	4 W Fremont	Waupaca
26	4	7	5	1994	15:43-15:55	2.5 NW Maribel - 0.5 W Cooperstown	Manitowoc
27	2	7	5	1994	15:53	2 SW Cooperstown	Manitowoc
28	1	7	8	1994	14:00	3 NW Elderon	Marathon
29	1	7	8	1994	14:16	3 SE Aniwa	Shawano
30	1	8	27	1994	21:07	Hancock	Waushara
31	1	8	27	1994	21:41-21:50	1.5 S Wausaukee - 3 SE Wausaukee	Marinette
32	0	6	29	1995	11:05	10 SW Kewaunee	Kewaunee
33	1	7	14	1995	16:40-16:47	Phelps	Vilas
34	0	4	25	1996	17:55-17:57	2 W Pensaukee	Oconto
35	0	6	11	1996	16:08-16:09	5 NW Chilton	Calumet
36	1	7	18	1996	16:20-16:30	1.5 SW - 3 SSE Tomahawk	Lincoln
37	0	7	18	1996	17:45	5 NE Oshkosh (waterspout)	Winnebago
38	1	7	18	1996	18:05-18:07	1.1 S - 1.6 SE Jericho	Calumet
39	0	7	18	1996	18:10	5.9 S Chilton	Calumet
40	0	7	18	1996	1815-1816	2.2 WNW - 1.8 W St Anna	Calumet

1990S TORNADO REFERENCE GUIDE

GREEN BAY FORECAST AREA TORNADOES

Event	F	Date			Time		TOR in GRB Service Area
#	Rank	Month	Day	Year	(CST)	Start / End Location	County or Counties
41	2	8	7	1996	01:45-01:49	6.5 N Stratford - 2.5 NNW Fernwood	Marathon
42	1	8	7	1996	01:46-01:47	1 N - 1.2 NE Stratford	Marathon
43	1	8	7	1996	02:19-02:21	0.4 SW Shantytown - Shantytown	Marathon
44	2	7	16	1997	14:38-14:40	11.5 ESE - 12 SE Merrill	Lincoln
45	2	7	16	1997	14:40-14:45	8.5 NNE - 6.9 NE Nutterville	Marathon
46	0	7	16	1997	15:00-15:01	4 SW - 4.2 SW Hogarty	Marathon
47	0	7	16	1997	15:00	3 N Sunset	Marathon
48	1	7	16	1997	15:09-15:11	2 NE - 1.8 NE Ringle	Marathon
49	0	7	16	1997	15:20-15:22	2 N - 1.8 N Elderon	Marathon
50	0	7	16	1997	16:41-16:42	Hancock	Waushara
51	0	3	29	1998	19:28-19:35	3 W - 3 N Tomahawk	Lincoln
52	0	5	31	1998	00:20-00:21	4 WSW Mosinee	Marathon
53	1	5	31	1998	01:20-01:24	0.5 N Stockbridge - 2 NE Stockbridge	Calumet
54	0	6	16	1998	15:00	3 WNW Coloma	Waushara
55	0	8	23	1998	15:22	Menasha	Winnebago
56	3	8	23	1998	17:30-17:44	3 SW Egg Harbor - 5 SE Egg Harbor	Door
57	0	5	5	1999	16:30-16:31	1 WNW Tomahawk	Lincoln
58	0	8	3	1999	17:45	3 W Pittsville	Wood
59	0	8	4	1999	16:05-16:15	21 ESE Sturgeon Bay (waterspout)	Door
60	0	9	9	1999	14:55	3 N Sister Bay (waterspout)	Door
61	0	9	19	1999	16:46-17:10	8 SE Sturgeon Bay (waterspout)	Door

1990S TORNADO / WATERSPOUT GUIDE

Event 1: June 12, 1990

The F1 tornado hit a farm 2 miles west of Stratford in Marathon County around 6:35 PM CST. The tornado was 25 yards wide and was only on the ground for a tenth of a mile. According to newspaper reports, there was damage to some farm structures.

Event 2: June 14, 1991

The F1 tornado touched down 8 miles west northwest of Merrill in Lincoln County around 11:55 AM CST. The tornado was 50 yards wide and was on the ground for a mile. The tornado destroyed several trees, a barn and damaged a roof and porch of a house.

Event 3: June 27, 1991

The F2 tornado touched down 12 miles west-southwest of Minocqua in Oneida County around 6:20 PM CST. The tornado cut a 6 miles swath from near Pine Lake to Franklin Lake to Marion Lake before dissipating around 6:30 PM CST. The tornado was 400 yards wide. Thirteen homes and one car were damaged along its path with damage estimated at \$350,000 dollars. In addition, 1,600 acres of industrial forest valued at \$240,000 were also damaged.

Event 4: July 28, 1991

The F0 waterspout was reported near Rock Island across extreme northern Door County at 10:15 AM CST. A second F0 waterspout was reported near Washington Island.

Event 5: July 28, 1991

The F0 waterspout was reported near Washington Island across extreme northern Door County around 10:15 AM CST. A second waterspout was reported near Rock Island around the same time.

Event 6: September 14, 1991

The F0 tornado touched down briefly 2 miles west of Green Valley in Shawano County around 6:00 PM CST. The tornado was 25 yards wide and only traveled a tenth of a mile. Damage was confined to some trees and a pair of sheds.

Event 7: April 20, 1992:

The F1 tornado formed 2 miles southwest of Arpin in Wood County around 4 PM CST. The tornado was 25 yards wide and traveled 9.5 miles before dissipating a half mile south of Bethel or near Bakerville around 4:20 PM CST. Damage included: a shed was knocked down near Arpin, a mobile home was picked up and twisted around near Bethel and some roof damage was reported at Bakerville.

Event 8: May 16, 1992

The F1 tornado touched down 5 miles north of Junction City in Portage County around 2:30 PM CST. The tornado was 400 yards wide and traveled 1.3 miles before dissipating. The tornado damaged three homes, two sheds, and a mobile home roof 5 miles north of Junction City.

Event 9: May 16, 1992

The F2 tornado touched down 4 miles west of Keene in Portage County around 6:10 PM CST. The tornado was 400 yards wide and traveled eleven miles to 5 miles southeast of Amherst before dissipating around 6:30 PM CST. The tornado tossed a mobile home in the middle of a road in Plover Township and damaged fourteen homes, two farms, and a large amount of irrigation equipment.

Event 10: May 16: 1992

In Waupaca County, the F1 tornado touched down two and a half miles northeast of Northland around 6:30 PM CST. The tornado was 100 yards wide and was on the ground for a mile and a half. Many trees and three homes were damaged by the tornado.

1990S TORNADO / WATERSPOUT GUIDE

Event 11: May 16, 1992

The F1 tornado formed near Lamers and Clancy Roads near Kaukauna in Outagamie County around 7:20 PM CST. The tornado was 100 yards wide and traveled several miles into extreme southwest Brown County where it dissipated 2 miles southwest of Wrightstown around 7:30 PM CST. Numerous trees were down, some of which landed on houses.

Event 12: June 17, 1992

The F0 tornado briefly touched down in an open field 2 miles northeast of Denmark in Brown County around 12:55 PM CST. The tornado was 25 yards wide and only traveled a tenth of a mile.

Event 13: July 19, 1992

The F1 tornado formed 2 miles west southwest of Stratford in Marathon County around 3:54 PM CST. The tornado was 400 yards wide and was on the ground for only a quarter of a mile. The damage from the tornado included: a destroyed barn, two houses and one garage damaged while several trees were downed.

Event 14: August 29, 1992

The F3 tornado touched down east of Big Flats in Adams County around 7 PM CST. The tornado skipped along a five miles path, toppling trees and downing a 24 by 30 feet building. The killer tornado traveled a 28 miles path across Adams and Waushara Counties. The tornado was noted north of Coloma 7:10 PM just CST. The tornado then moved to Wautoma to just north of Redgranite and then to three miles southeast of Poy Sippi before dissipating around 7:55 PM CST. The hardest hit area was just south of Wautoma where a woman was killed when her mobile home was hurled several hundred feet into a parking lot. In addition, 30 people were injured, several critically. The tornado caused over ten million dollars in damage. Forty-eight homes were destroyed, and ninety-five other structures sustained major damage, 289 received minor damage. 950 acres of trees were toppled by the tornadic winds.

Event 15: October 8, 1992

The F1 tornado touched down in the Gilbert Lakes area about 5 miles northeast of Wild Rose in Waushara County around 4:48 PM CST. The tornado was 400 yards wide and was on the ground for a mile. Fifteen homes and buildings were damaged. 500 oak and pine trees were also damaged.

Event 16: October 8, 1992

The F1 tornado touched down about 4 miles northeast of Blaine in Portage County and moved through the township of Lanark around 5:12 PM CST. The tornado was 100 yards wide and was on the ground for 2 miles. Ten homes and buildings were damaged, a barn and garage destroyed, and numerous trees were knocked down.

Event 17: June 8, 1993

Three weak tornadoes touched down across Waushara County on the evening of June 8th. The F0 tornado developed two and a half miles south of Spring Lake around 6:38 PM CST. The tornado was 25 yards wide and traveled 8 miles before dissipating around 6:55 PM CST two miles west of Auroraville. Only minor damage was noted.

Event 18: June 8, 1993

Three weak tornadoes touched down across Waushara County on the evening of June 8th. The F0 tornado developed a half mile east of Dakota around 7:15 PM CST. The tornado was 35 yards wide and traveled 12 miles before dissipating around 7:35 PM CST two miles south of Redgranite. Only minor damage was noted.

1990S TORNADO / WATERSPOUT GUIDE

Event 19: June 8, 1993

Three weak tornadoes touched down across Waushara County on the evening of June 8th. The F0 tornado touched down 5 miles southeast of Redgranite around 7:35 PM CST. The tornado was 25 yards wide and traveled 6 miles before dissipating at 7:45 PM three miles southeast of Auroraville. Only minor damage was noted.

Event 20: June 8, 1993

The F0 small tornado briefly touched down in an open field one mile east of Pickett in Winnebago County around 5:35 PM CST. The tornado was 25 yards wide and traveled a tenth of a mile.

Event 21: August 9, 1993

The F0 tornado touched down one mile north of Tripoli in Oneida County around 8:15 PM CST. The tornado was 50 yards wide and traveled three tenths of a mile. Little damage was noted with this tornado.

Event 22: April 24, 1994

The F0 tornado touched down 3 miles south of Luxemburg in Kewaunee County around 3:25 PM CST. The tornado was 25 yards wide and was on the ground for a tenth of a mile. No damage was reported with this storm.

Event 23: April 26, 1994

The F1 tornado touched down a mile and a half north of Conover in Vilas County around 2:55 PM CST. The tornado was 150 yards wide and traveled four and a half miles before dissipating 3 miles southeast of Land O' Lakes around 3:05 PM CST. The tornado damaged a house just north of Conover and leveled hundreds of trees along its four and a half miles path into the Nicolet National Forest.

Event 24: May 30, 1994

The F2 tornado touched down 2 miles southwest of Crandon in Forest County around 8:50 PM CST. The tornado traveled 12 miles and reached a maximum width of 800 yards before dissipating one mile north of Laona around 9:16 PM CST. Three mobile homes and 25 homes were destroyed while 600 acres of timber was leveled. Three people were injured in a mobile that was destroyed by the tornado. The thunderstorms also produced tennis ball size hail as the storms passed through Rhinelander.

Event 25: July 4, 1994

The F0 tornado touched down 4 miles west of Fremont in Waupaca County around 4:49 PM CST. The tornado was 25 yards wide and was on the ground for a tenth of a mile. The tornado did not produce any significant damage.

Event 26: July 5, 1994

A powerful F4 tornado cut a short but devastating path in northern Manitowoc County from two and a half miles northwest of Maribel around 3:43 PM CST to a half mile west of Cooperstown before dissipating around 3:55 PM CST. A second small tornado also developed two miles southwest of Cooperstown and carved out a minor damage path leveling a shed and tossing a grain box 300 yards. Much of the \$2.1 million in damages was inflicted by the first tornado. The tornado damaged 26 homes, 19 vehicles and one mobile home. Four heifers and two sheep were also killed. One man was injured when he was struck by a 55 gallons drum while a woman suffered minor injuries when pieces of a stone foundation fell on her. The tornado traveled three and a half miles and reached 150 yards in diameter.

1990S TORNADO / WATERSPOUT GUIDE

Event 27: July 5, 1994

The F2 tornado touched down 2 miles southwest of Cooperstown in Manitowoc County around 3:53 PM CST. The tornado traveled about a mile and reached a maximum width of 150 yards. A shed was leveled, and a grain box was tossed about 300 yards. This was one of two tornadoes to hit Manitowoc County on this date. A stronger F4 tornado touched down two and a half miles northwest of Maribel and traveled to a half mile west of Cooperstown between 3:43 PM and 3:55 PM CST.

Event 28: July 8, 1994

The F1 tornado touched 3 miles northwest of Elderon in Marathon County around 2 PM CST. The tornado was 75 yards wide and only traveled two tenths of a mile. The tornado moved a garage off its foundation and wrecked a house roof and shed three miles northwest of Elderon.

Event 29: July 8, 1994

The F1 tornado formed three miles southeast of Aniwa in Shawano County around 2:16 PM CST. The tornado was 75 yards wide. The tornado only traveled two tenths of a mile. The tornado destroyed a garage and toppled trees three miles southeast of Aniwa.

Event 30: August 27, 1994

The F1 tornado formed in Hancock in Waushara County around 9:07 PM CST. The tornado was 75 yards wide and was on the ground for a mile and a half.

Event 31: August 27, 1994

The F1 tornado developed a mile and half south of Wausaukee in Marinette County around 9:41 PM CST. The tornado was 75 yards wide and was on the ground for 4 miles before dissipating three miles southeast of Wausaukee around 9:50 PM CST.

Event 32: June 29, 1995

The F0 tornado touched down 10 miles southwest of Kewaunee in Kewaunee County around 11:05 AM CST. The tornado was 10 yards wide and traveled a tenth of a mile. The weak tornado touched down only for a few seconds in southern Kewaunee County. Minimal crop damage was reported since this brief tornado occurred in open rural country. The tornado appeared to form on the Lake Michigan lake breeze.

Event 33: July 14, 1995

The F1 tornado touched down a mile and a half southwest of Phelps in Vilas County around 4:40 PM CST. The tornado was 250 yards wide and traveled east for three and a half miles before dissipating just southeast of Phelps at 4:47 PM CST. Trees fell on cars, homes and businesses.

Event 34: April 25, 1996

A cold-core F0 tornado briefly touched down 2 miles west of Pensaukee in Oconto County around 5:55 PM CST. The tornado was 40 yards wide and traveled a tenth of a mile before dissipating at 5:57 PM CST. Several 6 to 8 inches diameter birch trees were knocked down.

Event 35: June 11, 1996

The F0 tornado briefly touched down 5 miles northwest of Chilton in Calumet County near the intersection of County Trunk BB and Killsnake Road around 4:08 PM CST. The tornado was 30 yards wide and was on the ground for a tenth of a mile before dissipating around 4:09 PM CST. The tornado threw a pile of lumber 30 feet in the air, tore shingles off a shed and broke a window.

1990S TORNADO / WATERSPOUT GUIDE

Event 36: July 18, 1996

The F1 tornado touched down a mile and a half southwest of Tomahawk at 4:20 PM CST. The tornado uprooted two trees at Bradley Park, then moved southeast across Lake Mohawkskin, flipping two boats over. The tornado moved back on land and tore part of a roof off a tavern while a garage was removed from its foundation. It continued to move into the Road Lake area where it produced its most significant damage. Three cottages were damaged after trees fell on them. The tornado reached a maximum width of 100 yards before it dissipated nearly three miles southeast of Tomahawk around 4:30 PM CST.

Event 37: July 18, 1996

The F0 waterspout was spotted 5 miles east of Oshkosh over Lake Winnebago in Winnebago County around 5:45 PM CST.

Event 38: July 18, 1996

The F1 tornado touched down 1.1 miles south of Jericho in Calumet County around 6:05 PM CST. The tornado was 100 yards wide and was on the ground a mile and a half before it dissipated 1.6 miles southeast of Jericho at 6:07 PM CST.

Event 39: July 18, 1996

The F0 tornado developed 5.9 miles south of Chilton in Calumet County around 6:10 PM CST. The tornado was 25 yards wide and was on the ground for a tenth of a mile. The tornado moved over a squad car, violently shaking it about. The tornado flattened portions of two nearby wheat fields.

Event 40: July 18, 1996

The F0 tornado developed 2.2 miles west northwest of St. Anna in Calumet County around 6:15 PM CST. The tornado was 50 yards wide and traveled a half mile before dissipating 1.8 miles west of St. Anna around 6:16 PM CST. The tornado damaged one farm, numerous trees and some crops. Calf houses at the farm were thrown 1,000 feet. The tornado entered Fond Du Lac County 1.6 miles southeast of Jericho and then reentered Calumet County 2.2 miles west north of St. Anna.

Event 41: August 7, 1996

The F2 tornado touched down six and a half miles north of Stratford in Marathon County around 1:45 AM CST, tearing the top portion of a home off, flattened a garage, and snapped off several large trees. The tornado continued east northeast for two and a half miles and reached a maximum width of 200 yards before dissipating two and a half miles north northwest of Fenwood around 1:49 AM CST. As the storm moved east, there was damage to a storage shed and thirty trees on a farm. A dozen of Ginseng shelters were thrown about. The tornado was not on the ground for the entire path.

Event 42: August 7, 1996

The brief F1 tornado touched down one mile north of Stratford in Marathon County around 1:46 AM CST. The tornado was 100 yards wide and only traveled two tenths of a mile before dissipating 1.2 miles northeast of Stratford around 1:47 AM CST. The tornado snapped off numerous large trees, some of which fell on the top of homes. In addition: a barn was flattened while a semi-trailer was flipped over, and a car moved 75 feet.

Event 43: August 7, 1996

The F1 tornado touched down four tenths of a mile southwest of Shantytown in Manitowoc County around 2:19 AM CST. The tornado was 100 yards wide and traveled nearly a half mile to Shantytown before dissipating around 2:21 AM CST. The tornado tore a 100 yards swath through a cornfield. In Shantytown, the tornado tore the roof and garage off a home. Pieces of the roof were found one-quarter of a mile away from the home.

1990S TORNADO / WATERSPOUT GUIDE

Event 44: July 16, 1997

On this date the F2 tornado touched down in southeast Lincoln County eleven and a half miles southeast of Merrill around 2:38 PM CST. The storm traveled under a mile to the southeast into Marathon County before dissipating 12 miles southeast of Merrill around 2:40 PM CST. The tornado reached a maximum width of 100 yards. As the storms rolled through Lincoln County, softball size hail was reported northeast of Merrill.

Event 45: July 16, 1997

The F2 tornado touched down eight and a half miles northeast of Nutterville in Marathon County around 2:40 PM CST. The storm traveled just over three miles and reached a maximum width of 100 yards before dissipating 6.9 miles northeast of Nutterville around 2:45 PM CST. The tornado damaged several homes, vehicles and silos, and destroyed numerous barns, sheds and crops. Twenty head of dairy cattle were killed or had to be destroyed. There were two other tornadoes with this tornadic supercell. Total damage to crops and property from the five tornadoes, hail and straight-line winds in Marathon County alone topped \$10 million.

Event 46: July 16, 1997

The F0 tornado developed 4 miles southwest of Hogarty in Marathon County around 3 PM CST. The tornado was 75 yards wide and traveled two tenths of a mile before dissipating 4.2 miles southwest of Hogarty around 3:01 PM CST.

Event 47: July 16, 1997

The F0 tornado touched down 3 miles north of Sunset in Marathon County around 3 PM CST. The tornado was 15 yards wide and was on the ground for a tenth of a mile before dissipating at 3:01 PM CST.

Event 48: July 16, 1997

The F1 tornado briefly touched down two miles northeast of Ringle in Marathon County around 3:09 PM CST. The tornado was 50 yards wide and only traveled two tenths of a mile before dissipating 1.8 miles northeast of Ringle around 3:11 PM CST.

Event 49: July 16, 1997

The F0 tornado touched down 2 miles north of Elderon in Marathon County around 3:20 PM CST. The tornado was 75 yards wide and traveled two tenths of a mile before dissipating 1.8 miles north of Elderon around 3:22 PM CST.

Event 50: July 16, 1997

The F0 tornado touched down in Hancock in Waushara County at 4:41 PM CST. The tornado was 10 yards wide and traveled a tenth of a mile before dissipating at 4:42 PM CST. The tornado touched down in an open field in Hancock.

Event 51: March 29, 1998

The F0 tornado touched down in 3 miles west of Tomahawk in Lincoln County at 7:28 PM CST. The tornado was 75 yards wide and traveled four and a half miles before dissipating 3 miles north of Tomahawk at 7:35 PM CST. The tornado damaged several sheds, garages and a pole building west of Tomahawk. The storm also downed many power poles, disrupting power to thousands of customers.

Event 52: May 31, 1998

The brief F0 tornado touched down 4 miles west southwest of Mosinee in Marathon County at 12:20 AM CST. The tornado was 50 yards wide and was on the ground for two tenths of a mile before it dissipated 3.8 miles west southwest of Mosinee at 12:21 AM CST.

1990S TORNADO / WATERSPOUT GUIDE

Event 53: May 31, 1998

The F1 tornado developed a half mile north of Stockbridge in Calumet County around 1:20 AM CST. The tornado was 75 yards wide and traveled 1.4 miles before dissipating 2 miles northeast of Stockbridge around 1:24 AM CST. The tornado destroyed a garage and silo, damaged two barns and overturned farm vehicles. A 2-by-4 was driven through the exterior wall of a house, narrowly missing one of the sleeping children.

Event 54: June 16, 1998

The F0 was designated a landspout in the monthly storm report. The tornado touched down 3 miles west northwest of Coloma in Waushara County at 3 PM CST. The tornado was 20 yards wide and was on the ground for a tenth of a mile. No damage was reported.

Event 55: August 23, 1998

The brief F0 tornado touched down near Menasha in Winnebago County at 3:22 PM CST. The tornado was 10 yards wide and traveled a tenth of a mile before dissipating. No damage was noted on the monthly storm report.

Event 56: August 23, 1998

Article written by National Weather Service Green Bay Staff

The F3 tornado struck a rural section of central Door County in Northeast Wisconsin during the evening of August 23, 1998. The multiple-vortex tornado was on the ground for nearly 14 minutes and carved a path of damage 5.1 miles long and 1/4 to over 1/2 mile wide at times. Damage was estimated at nearly \$7 million. The tornado, which moved off the waters of Green Bay, moved on shore three miles southwest of Egg Harbor at 5:30 PM CST, near Horseshoe Bay. Thousands of trees were snapped or uprooted as the tornado moved across the heavily wooded area in Murphy Park. The width of the damage path just after it came on shore was nearly one-half mile! The tornado then crossed Highway 42 at about 5:34 PM CST, severely damaging several houses and businesses. Damage in this area was rated F2 on the Fujita Scale of F0 to F5. About three minutes later the tornado ripped a two-story farmhouse off its foundation, dropping it 20 yards away. Based on the house's construction, damage in this area was rated F3. Nearby, a campground was hit, causing considerable damage there to trees and campers. Amazingly, only two people were injured. The tornado weakened shortly thereafter, lifting off the ground three miles west-northwest of Jacksonport at around 5:44 PM CST.

1990S TORNADO / WATERSPOUT GUIDE

Event 56: August 23, 1998 Continued

AUGUST 23, 1998 DOOR COUNTY F3 TORNADO



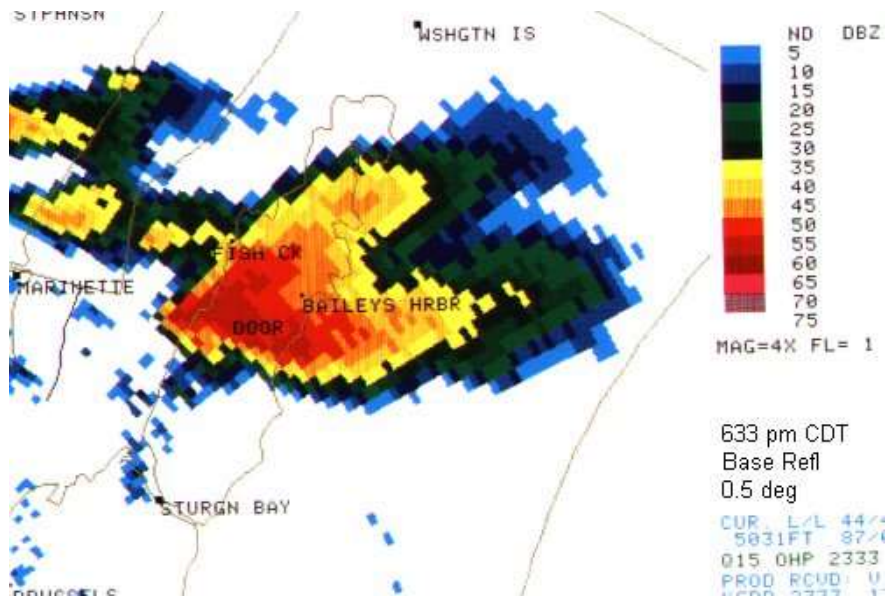
These photos (above) were taken by Tom Janssen II at Murphy Park, which was hit by the tornado. The two on the left show the waterspout just after it developed, around 5:15 PM CST. The third picture was taken a little after 5:20 PM CST. The tornado was off the Door county shore over the Bay of Green Bay.



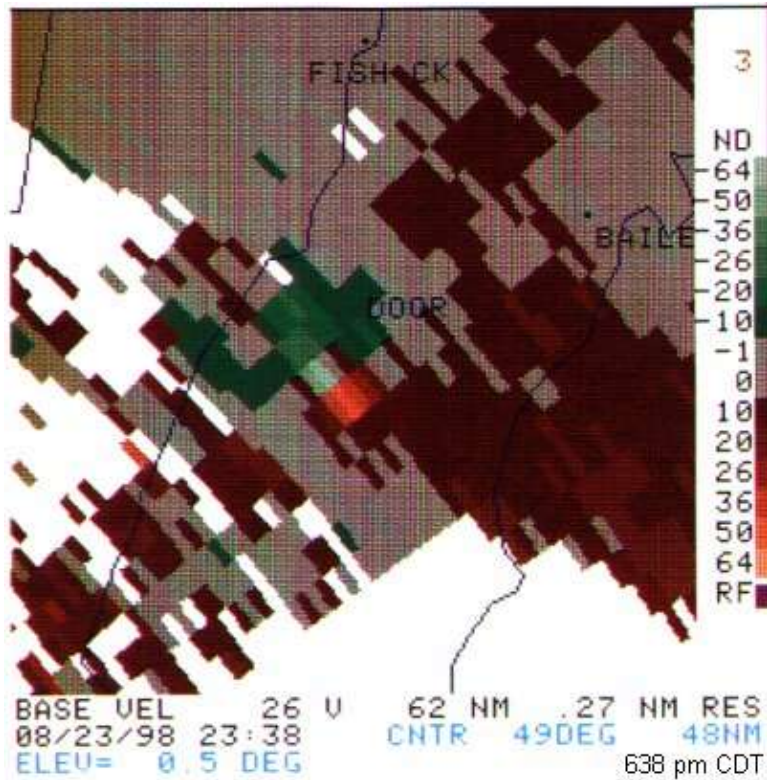
These pictures (above) were taken by Gary Gridley, from Egg Harbor. The photo on the left was taken at 5:25 PM CST. The picture on the right was taken around 5:30 PM CST, as the tornado was coming onshore at Murphy Park.

1990S TORNADO / WATERSPOUT GUIDE

Event 56: August 23, 1998 Continued



This image shows the supercell thunderstorm as viewed by the radar. The image was taken at 5:33 PM CST.



The second image shows the tornado vortex signature 9 minutes later (5:38 PM CST) near the time it was producing F3 damage. At this point, the radar measured 94 knot (108 mph) winds (ground relative) at about 4,100 feet above the ground.

1990S TORNADO / WATERSPOUT GUIDE

Event 56: August 23, 1998 Continued

Door County Tornado Damage



Here is a panoramic view looking east on Hwy 42. The damage width (which goes off the picture on both sides) was over ¼ mile wide as it passed over Hwy 42. (Photograph by Jeff Last)



This building (left picture) was on the south side of the tornado as it passed over Hwy 42 (Photograph by Jill Last, NWS Green Bay). There used to be a farmhouse and barn here (picture on right).

Event 57: May 5, 1999

The F0 tornado touched down a mile west northwest of Tomahawk in Lincoln County at 4:30 PM CST. The tornado was 25 yards wide and was on the ground for a tenth of a mile before dissipating at 4:31 PM CST.

Event 58: August 3, 1999

The F0 tornado briefly touched down 3 miles west of Pittsville in Wood County at 5:45 PM CST. The tornado was 10 yards wide and was on the ground for a tenth of a mile. The tornado knocked down trees 3 miles west of Pittsville.

Event 59: August 4, 1999

The F0 waterspout was reported by a vessel on the lake 21 miles east southeast of Sturgeon Bay in Door County at 4:05 PM CST. The crew of the vessel observed two other waterspouts about 21 miles east southeast of Sturgeon Bay. The U.S. Coast Guard relayed the report they received from the vessel on the lake.

1990S TORNADO / WATERSPOUT GUIDE

Event 60: September 9, 1999

The F0 waterspout was reported 3 miles north of Sister Bay in Door County at 2:55 PM CST.

Event 61: September 19, 1999

The crew of a ship off the Door County shoreline, 8 miles southeast of Sturgeon Bay, spotted the F0 waterspout at 4:46 PM CST and then dissipated around 5:10 PM CST. There may have been other waterspouts in the vicinity of the one reported.