



# Drought Information Statement for Tri-State Area

Valid August, 04, 2023

Issued By: NWS Goodland, Kansas

Contact Information: [nws.goodland@noaa.gov](mailto:nws.goodland@noaa.gov)

- This product will be updated by the 5th of each month or sooner if drought conditions change significantly.
  - Please see all currently available products at <https://drought.gov/drought-information-statements>.
  - Please visit <https://www.weather.gov/GLD/DroughtInformationStatement> for previous statements.
  - Please visit <https://www.drought.gov/drought-status-updates> for regional drought status updates.
- 
- Drought has worsened across portions of the area due to a hot and dry end to July.





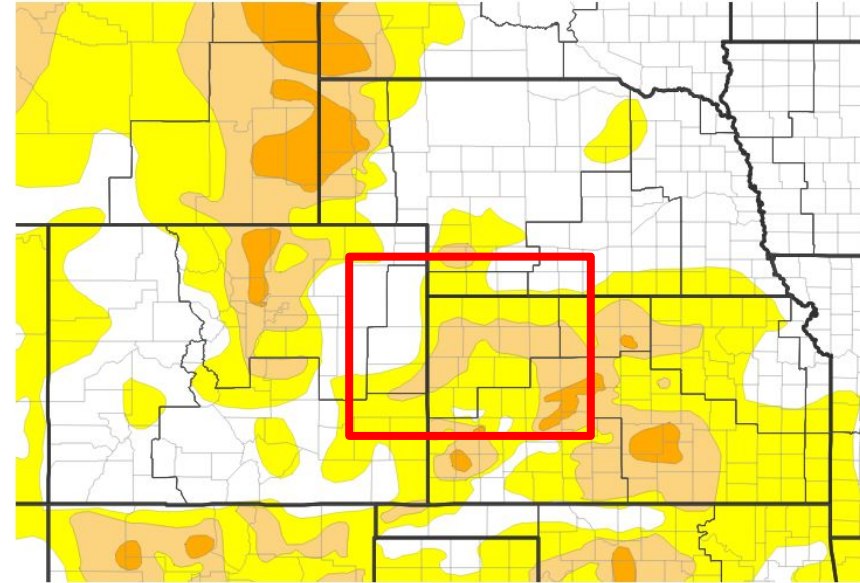
# U.S. Drought Monitor

Link to the [latest U.S. Drought Monitor](#) for High Plains

- Drought intensity and Extent

D1 (Moderate Drought): Cheyenne (KS), Kit Carson, Sherman, Thomas, Cheyenne (CO), Wallace, Logan, Greeley, Wichita, Rawlins, Graham, Decatur. Sheridan

D0: Yuma, Kit Carson, Gove, Norton, Wichita, Hitchcock, Dundy



U.S. Drought Monitor



Image Caption: Goodland County Warning Area Drought Monitor. Valid

6am MDT Aug 03, 2024





# Recent Change in Drought Intensity

Link to the latest [4-week change map](#) for CONUS

- 4 Week Drought Monitor Class Change.

(2 Class Degradation) Drought Worsened:  
Sheridan, Graham

Drought Worsened: Dundy, Hitchcock,  
northern Cheyenne (KS), Rawlins, Decatur,  
Norton, southern Sherman, Thomas, Gove,  
Logan, Wichita, Greeley, Wallace,  
Cheyenne (CO), Kit Carson

No Change: Yuma, Greeley, Wichita,  
Sheridan

Drought Improved: Southern Cheyenne  
(KS), Northern Sherman

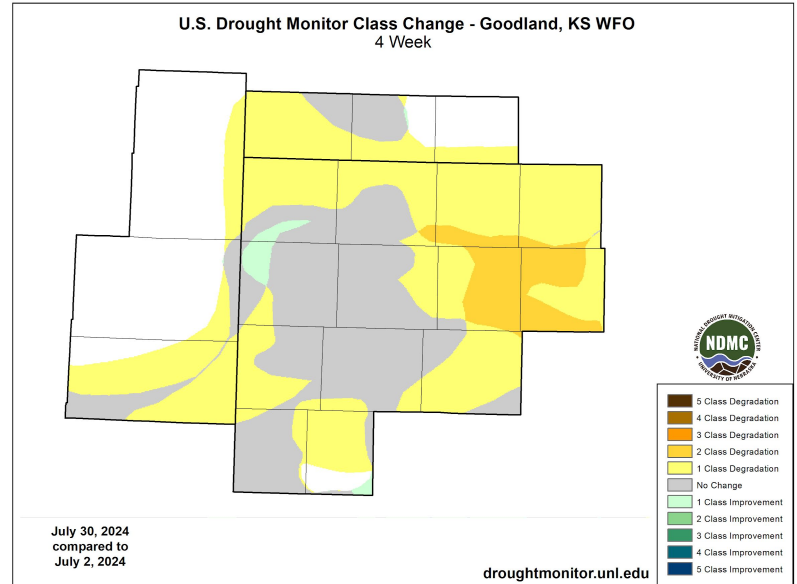


Image Caption: U.S. Drought Monitor 4-week change map valid  
6am MDT Aug 03, 2024





# Precipitation

- Eastern portions of the area have been most prone to missing the rainfall from the previous month which has led to the 2 class degradation of drought.

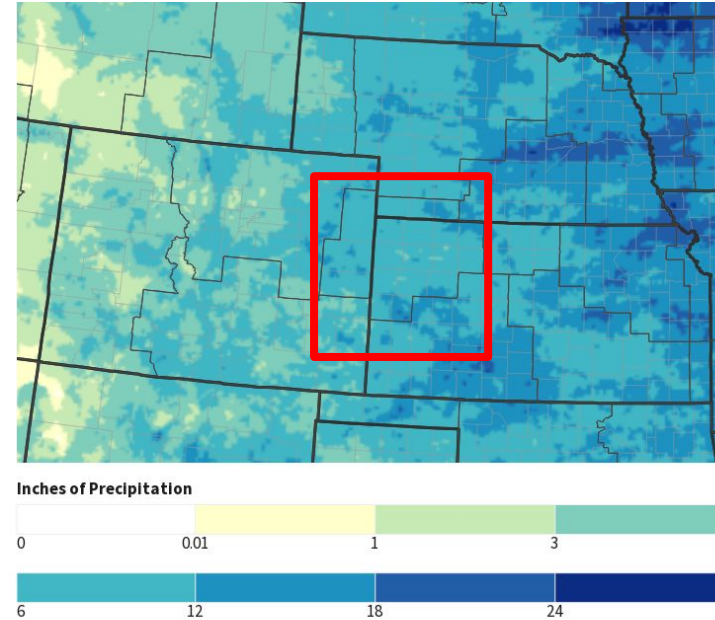
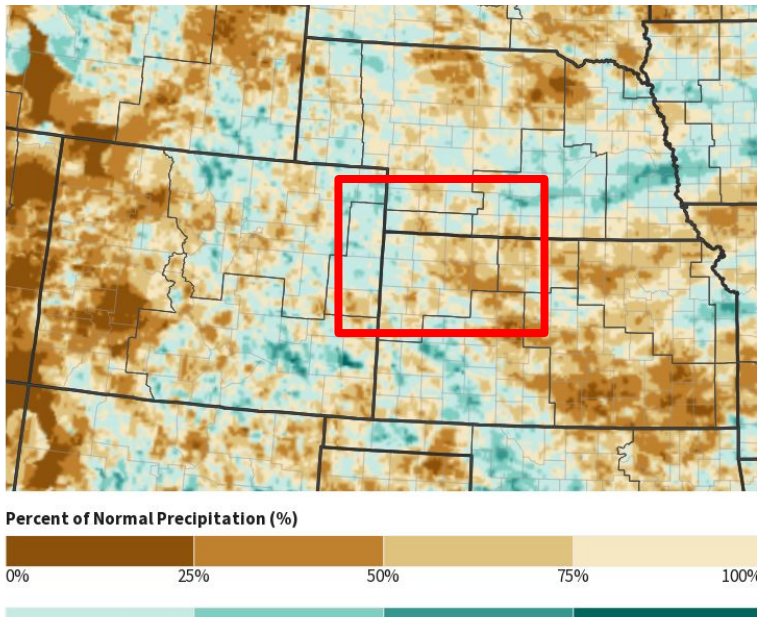


Image Captions:  
Right - Monthly Precipitation Amount for Tri-State Area  
Left - Percent of Normal Monthly Precipitation for Tri-State Area  
Data Courtesy of National Water Prediction Center. Date Valid:

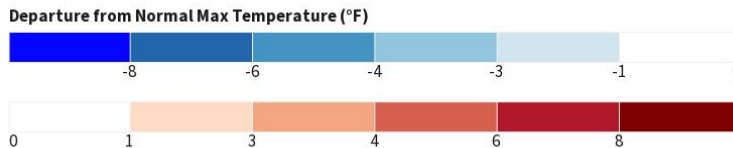
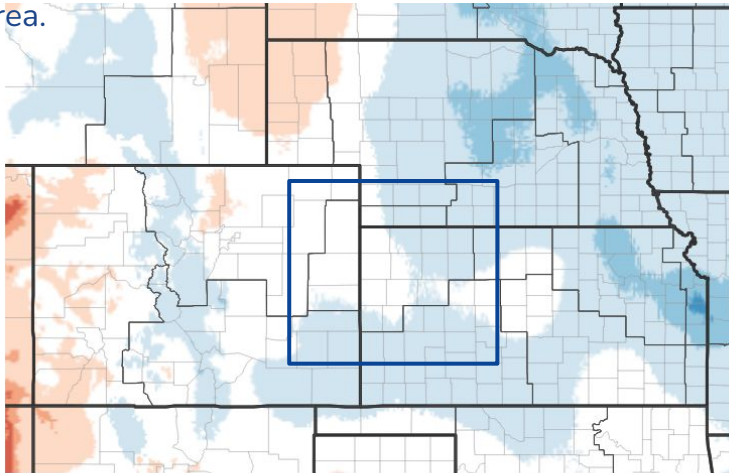
Aug 03 2024





# Temperature

- A cooler start to July lead to the overall month being “below normal” despite the late month heat.
- The late month heat plus the dry conditions is what lead to the drought degradations Across the area.



Source(s): NOAA's National Centers for Environmental Information; image courtesy of Drought.gov Data Valid: 07/29/24

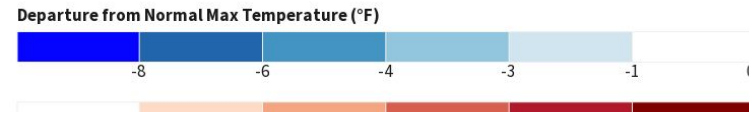
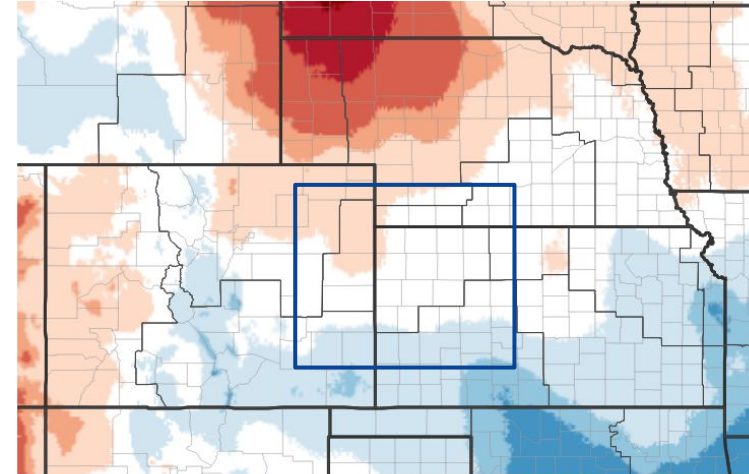


Image Captions:  
 Right - 7 Day Temperature Anomaly  
 Left - 30 Day Temperature Anomaly  
 Data Courtesy High Plains Regional Climate Center. Date Valid:  
 Aug 03 2024





# Summary of Impacts

Links: See/submit [Condition Monitoring Observer Reports \(CMOR\)](#) and view the [Drought Impacts Reporter](#)

## Hydrologic Impacts

- There are no known impacts at this time

## Agricultural Impacts

- USDA Nebraska Crop Progress and Condition Reports can be found [here](#)
- USDA Kansas Crop Progress and Condition Reports can be found [here](#)

## Fire Hazard Impacts

- Periods of prolonged heat and dryness have lead to at least localized area of drying out vegetation.

## Other Impacts

- There are no known impacts at this time

## Mitigation Actions

- Please refer to your municipality and/or water provider for mitigation information.

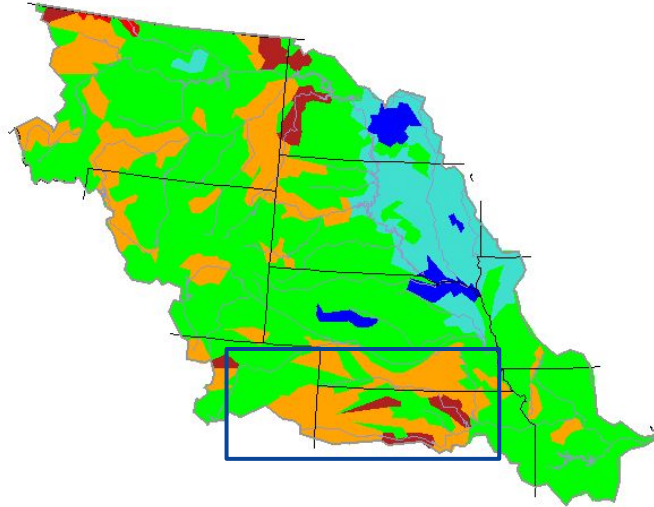




# Hydrologic Conditions and Impacts

- No know impacts at this time as much of the Tri-State Area remains normal or below normal.

Friday, August 02, 2024



USGS

Explanation - Percentile classes							
Low	<10	10-24	25-75	76-90	>90	High	No Data
	Much below normal	Below normal	Normal	Above normal	Much above normal		

Image Caption: USGS 7 day average streamflow HUC map valid  
Aug 03 2024





# Agricultural Impacts

- Soil moisture continues to dry out across the area as the summer heat and lack of beneficial rainfall continues to remain scarce.

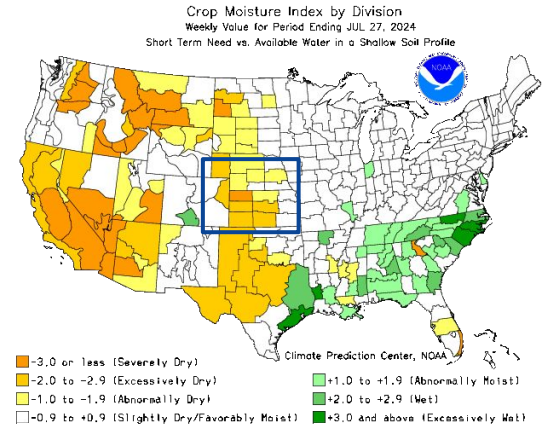
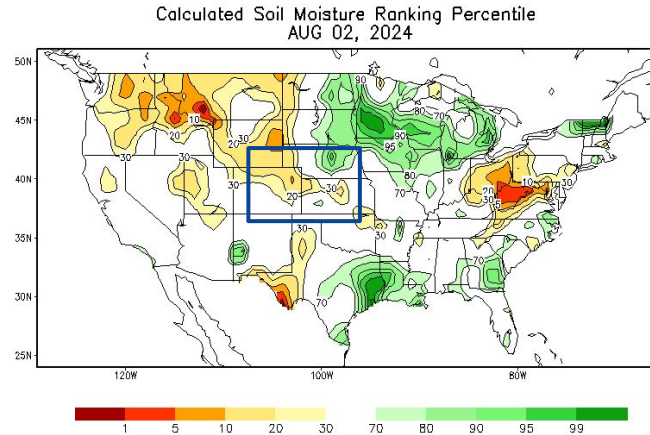


Image Captions:

Left: CPC Calculated [Soil Moisture Ranking Percentile](#) valid Aug 03 2024

Right: [Crop Moisture Index by Division](#). Weekly value for period ending July 27, 2024







# Fire Hazard Impacts

Link to [Wildfire Potential Outlooks from the National Interagency Coordination Center.](#)

- Not currently outlook for any significant wildland fire potential, but unless the prolonged heat and dry conditions continue the region will continue to be prone to the potential for wildfire development.

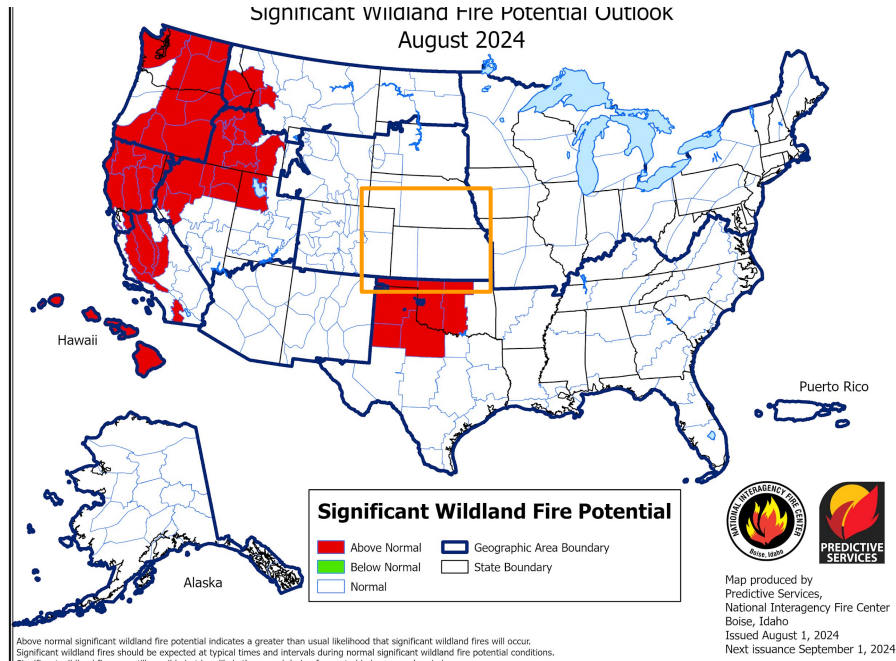


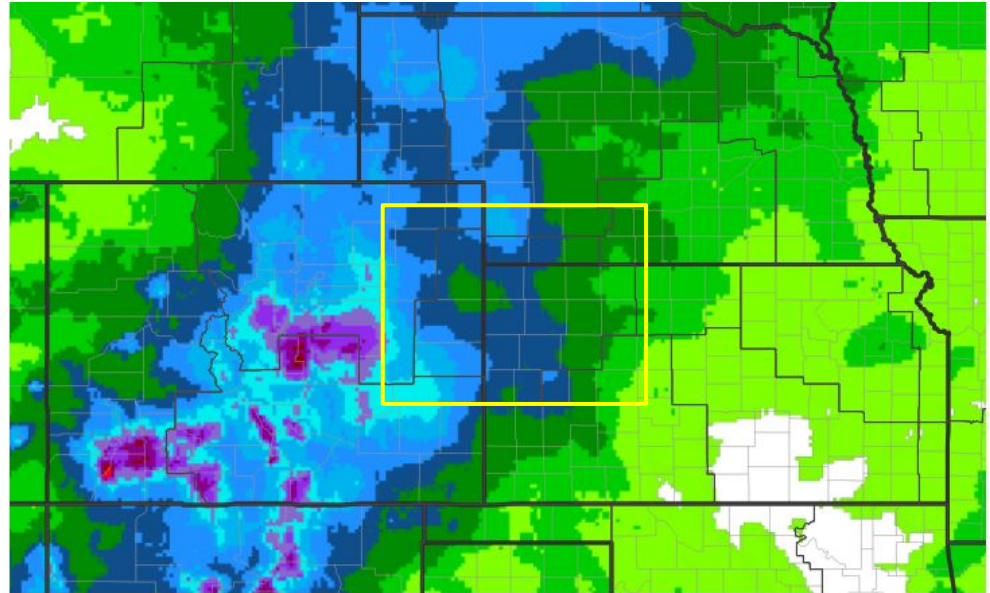
Image Caption: [Significant Wildland Fire Potential Monthly Outlook](#) for August 2024





# Seven Day Precipitation Forecast

- The majority of the current forecasted rainfall for the area is for late week into the weekend.
- Details will become more clear as the days get closer; but it does appear that some severe weather potential may again be possible again as well.
- A cooler trend for temperatures is possible as well.



Predicted Inches of Precipitation



Image Caption: Weather Prediction Center [7-day precipitation forecast](#) valid Monday June 3 to Monday June 10

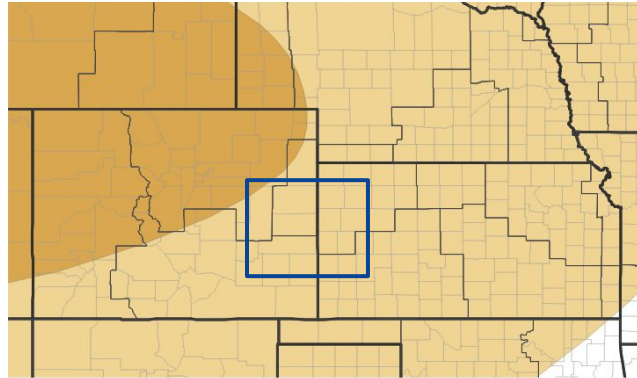




# Long-Range Outlooks

The latest monthly and seasonal outlooks can be found on the [CPC homepage](#)

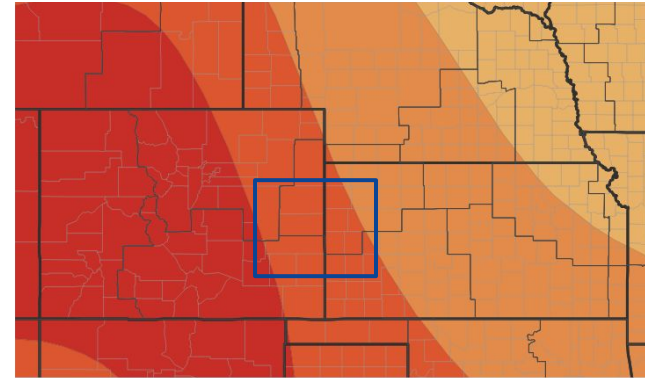
- For the month of August, below normal precipitation and above normal temperatures are currently favored.
- The same signal unfortunately does appear to be the same into the start of the fall months as well.



Probability of Below-Normal Precipitation



Probability of Above-Normal Precipitation



Probability of Below-Normal Temperatures



Probability of Above-Normal Temperatures



Image Captions:

Left - [Climate Prediction Center Monthly Temperature Outlook](#),

Right - [Climate Prediction Center Monthly Precipitation Outlook](#),

Valid August 2024





# Drought Outlook

The latest monthly and seasonal outlooks can be found on the [CPC homepage](#)

- Continued signal for above normal temperatures and below normal precipitation continues to suggest that drought may continue to expand and potentially worsen across the area through the end of October.

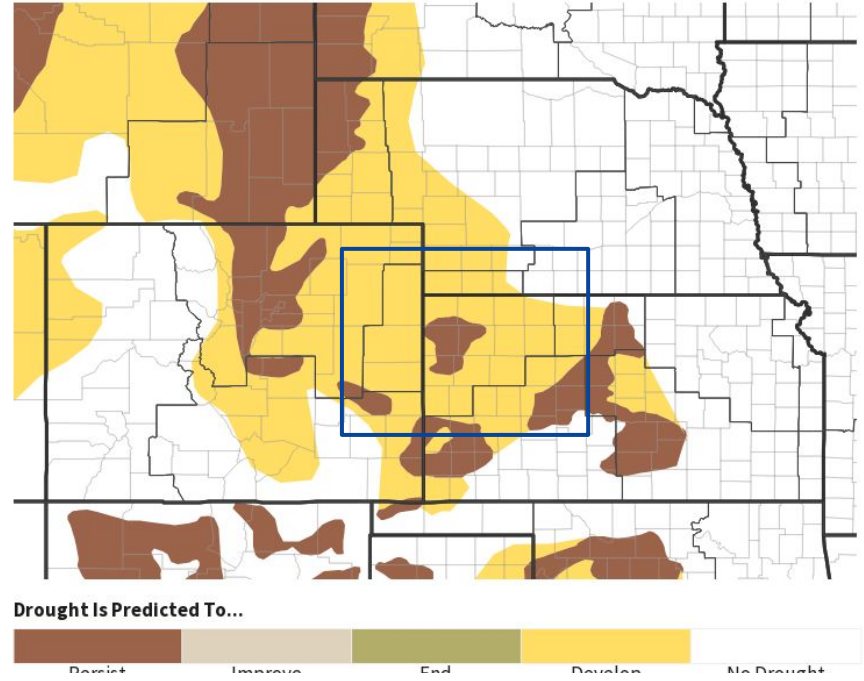


Image Caption:

Climate Prediction Center Monthly Drought Outlook Released **July 18, 2024**

Valid: **August- October 2024**

Links to the latest:

[Climate Prediction Center Monthly Drought Outlook](#)

[Climate Prediction Center Seasonal Drought Outlook](#)



National Oceanic and Atmospheric Administration

U.S. Department of Commerce

National Weather Service  
Goodland



# Contact Information

For feedback, comments, questions specific to the Drought Information Statement please reach out to:

[nws.goodland@noaa.gov](mailto:nws.goodland@noaa.gov) or  
[tyler.trigg@noaa.gov](mailto:tyler.trigg@noaa.gov)

