



Drought Information Statement for Tri-State Area

Valid July, 04, 2023

Issued By: NWS Goodland, Kansas

Contact Information: nws.goodland@noaa.gov

- This product will be updated by the 5th of each month or sooner if drought conditions change significantly.
 - Please see all currently available products at <https://drought.gov/drought-information-statements>.
 - Please visit <https://www.weather.gov/GLD/DroughtInformationStatement> for previous statements.
 - Please visit <https://www.drought.gov/drought-status-updates> for regional drought status updates.
-
- Drought remained roughly the same across the area due to some widespread rains.
 - Local areas did not get some of the rains so drought did worsen locally.





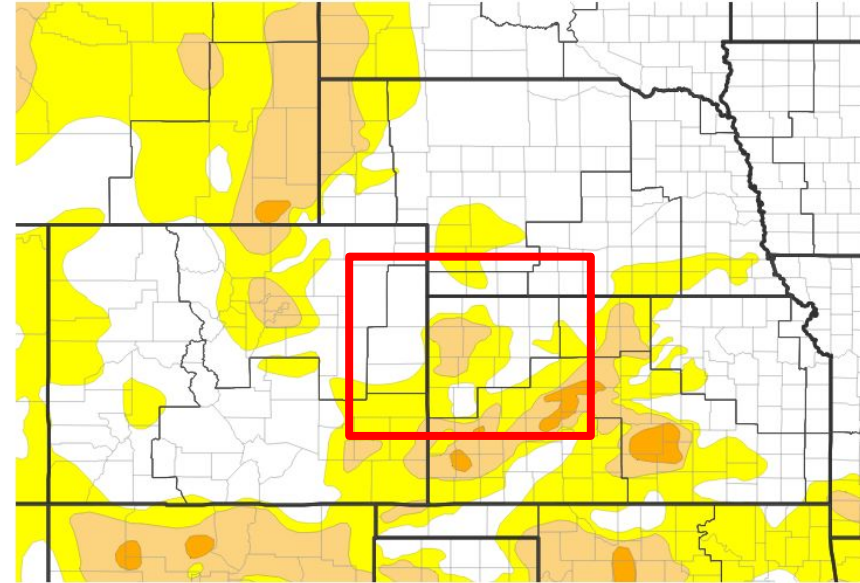
U.S. Drought Monitor

Link to the [latest U.S. Drought Monitor](#) for High Plains

- Drought intensity and Extent

D1 (Moderate Drought): Cheyenne (KS),
Rawlins, Sherman, Thomas, Wallace, Logan

D0: Dundy, Hitchcock, Graham, Sheridan,
Cheyenne (CO), Greeley, Gove



U.S. Drought Monitor



Image Caption: Goodland County Warning Area Drought Monitor. Valid

6am MDT Jul 04, 2024





Recent Change in Drought Intensity

Link to the latest [4-week change map](#) for CONUS

- 4 Week Drought Monitor Class Change.
 - Drought Worsened: Dundy, Hitchcock, Rawlins, Thomas
 - No Change: Yuma, Red Willow, Decatur, Norton
 - Drought Improved: Kit Carson, Cheyenne (CO), Sherman, Wallace, Wichita, Logan, Gove, Sheridan, Graham

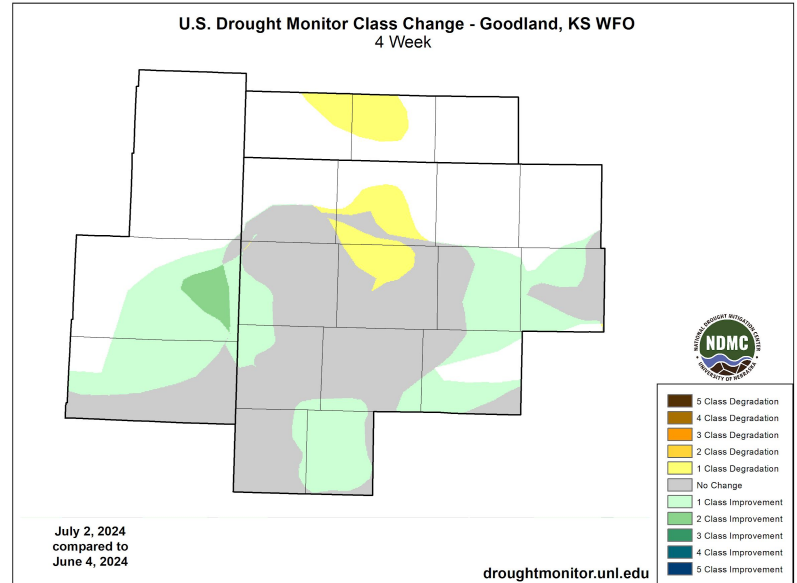


Image Caption: U.S. Drought Monitor 4-week change map valid 6am MDT Jul 04, 2024





Precipitation

- Most of the area did see above normal rainfall with multiple inches falling. However west central parts of the the area actually saw below normal precipitation. Goodland for the month reported only 0.68 inches of rain.

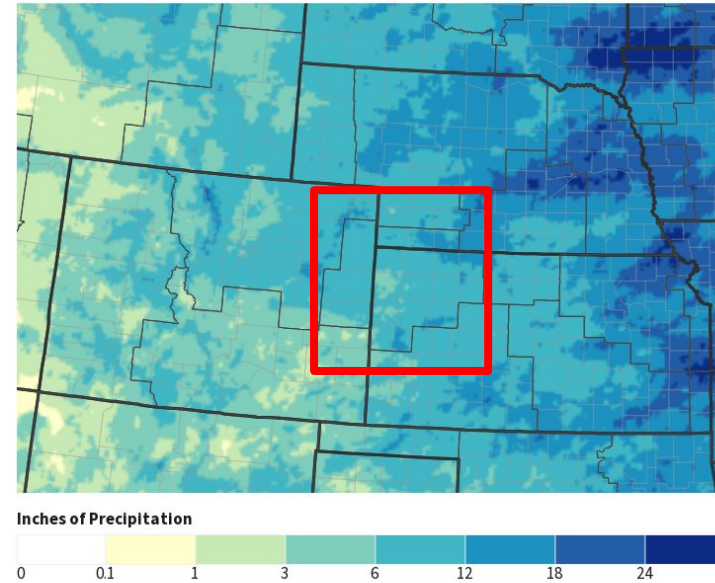
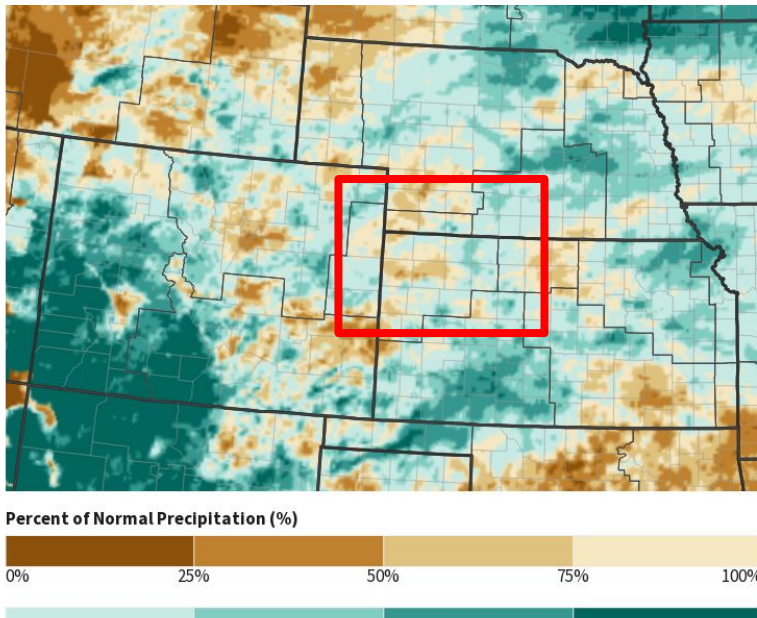


Image Captions:
 Right - Monthly Precipitation Amount for Tri-State Area
 Left - Percent of Normal Monthly Precipitation for Tri-State Area
 Data Courtesy of National Water Prediction Center. Date Valid:

Jul 04 2024





Temperature

- Above normal temperatures have been seen across the area for the month of June.
- This has been mainly in part due to mid level ridging over the region.
- Notice how the warmest temperatures were in roughly the same area that saw the least amount of rainfall.

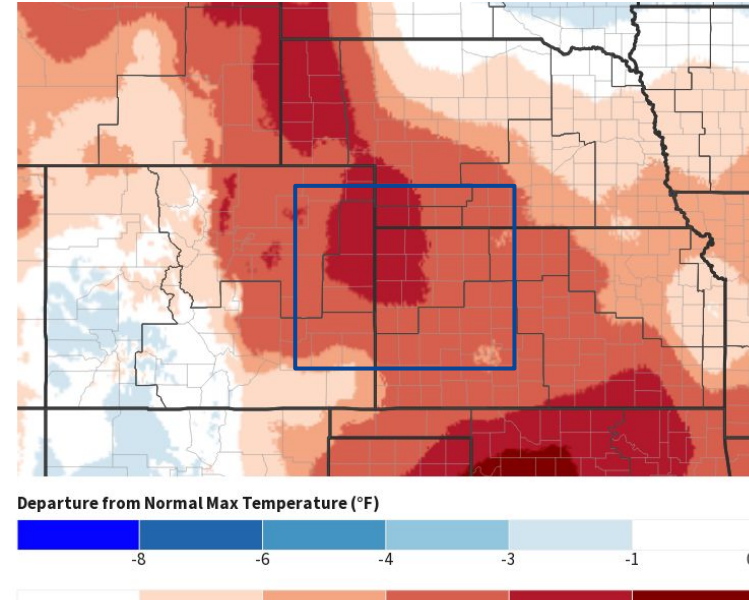
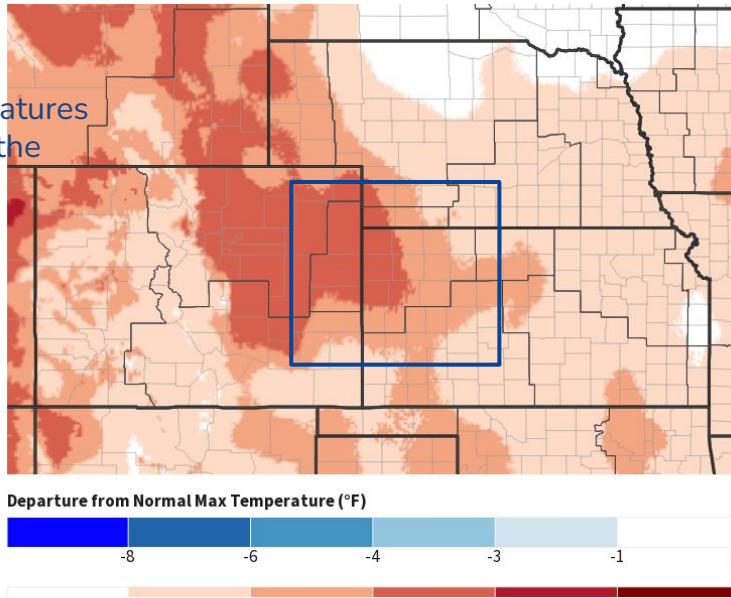


Image Captions:
Right - 7 Day Temperature Anomaly
Left - 30 Day Temperature Anomaly
Data Courtesy High Plains Regional Climate Center. Date Valid:
Jul 04 2024





Summary of Impacts

Links: See/submit [Condition Monitoring Observer Reports \(CMOR\)](#) and view the [Drought Impacts Reporter](#)

Hydrologic Impacts

- There are no known impacts at this time

Agricultural Impacts

- USDA Nebraska Crop Progress and Condition Reports can be found [here](#)
- USDA Kansas Crop Progress and Condition Reports can be found [here](#)

Fire Hazard Impacts

- Despite the rainfall, National Interagency Fire Center is highlighting western Kansas for above normal significant wildland fire potential for July and August. This is in part due to the anticipated drying out signal that has been anticipated as we transition to the La Nina of ENSO. For more information please visit: <https://www.nifc.gov/nicc/predictive-services/outlooks>

Other Impacts

- There are no known impacts at this time

Mitigation Actions

- Please refer to your municipality and/or water provider for mitigation information.

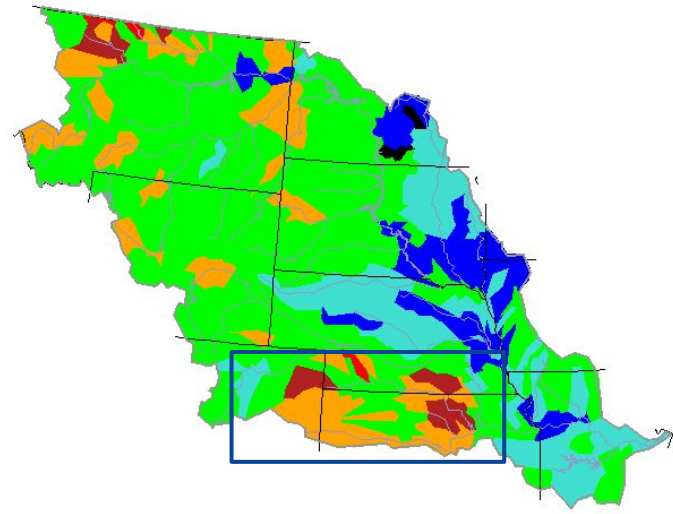




Hydrologic Conditions and Impacts

- No know impacts at this time as much of the Tri-State Area remains normal or below normal.
- There are a Much Above Normal locations across Nebraska which will need to be watched for increase in streamflows for us, especially if the active pattern continues.

Wednesday, July 03, 2024



USGS

Explanation - Percentile classes							
Low	<10	10-24	25-75	76-90	>90	High	No Data
	Much below normal	Below normal	Normal	Above normal	Much above normal		

Image Caption: USGS 7 day average streamflow HUC map valid Jul 04 2024



Agricultural Impacts

- Soil moisture remains around normal for most of the area with the exception of the Cheyenne Ridge into NW Kansas.
- This is also the area that has seen the least amount of rainfall and the warmer temperatures for the month.

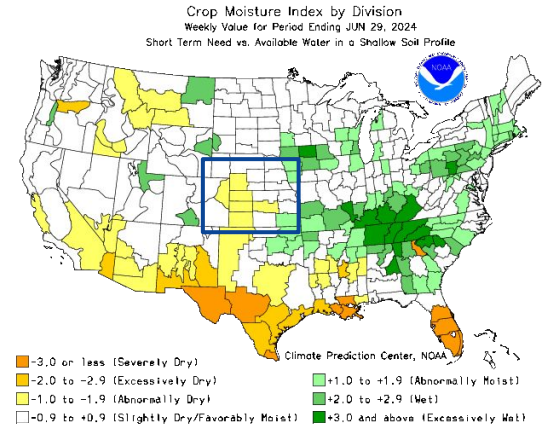
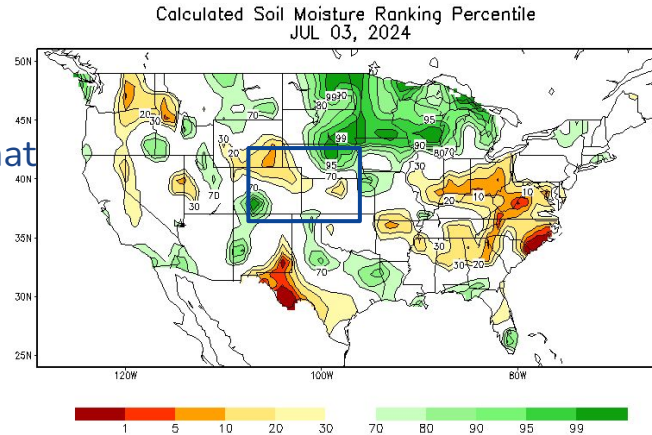


Image Captions:

Left: CPC Calculated [Soil Moisture Ranking Percentile](#) valid Jul 04 2024

Right: [Crop Moisture Index by Division](#). Weekly value for period ending May 25, 2024





Fire Hazard Impacts

Link to [Wildfire Potential Outlooks from the National Interagency Coordination Center.](#)

- Wildland Fire Potential may start to become more of an issue as the anticipated drying out and hot weather signal continues to show up as we get into the main part of Summer.
- This signal does continue into August as well so some prolonged periods of hot and dry may become possible.

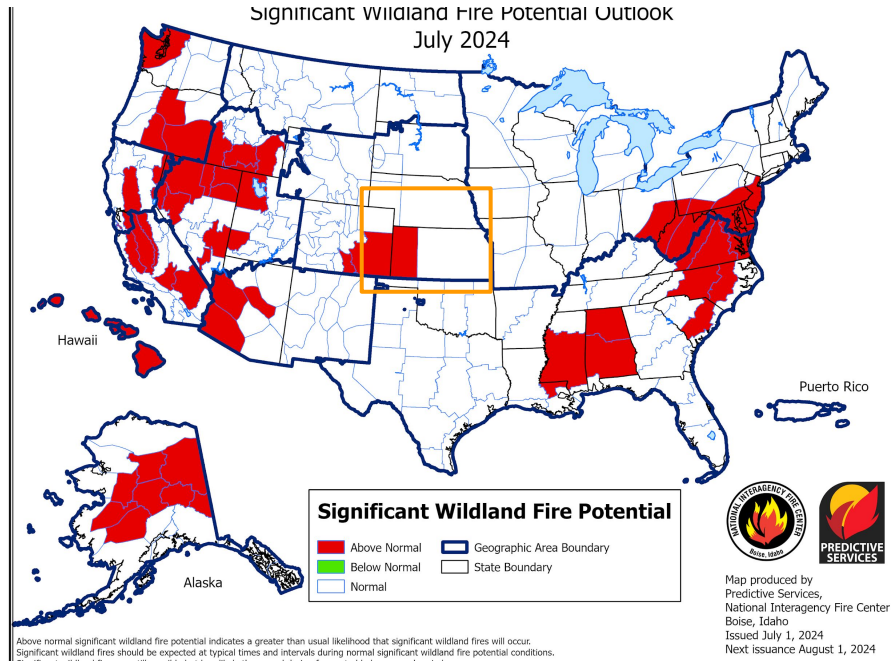


Image Caption: [Significant Wildland Fire Potential Monthly Outlook](#) for July 2024





Seven Day Precipitation Forecast

- The majority of the current forecasted rainfall for the area is for this upcoming weekend through the start of the 2nd week of July.
- Ridging does appear to become increasingly likely which does mitigate widespread rainfall chances.

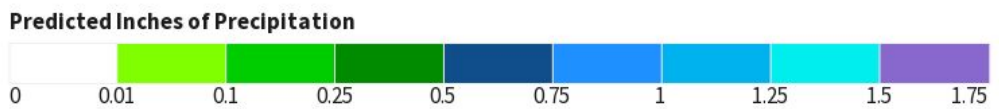
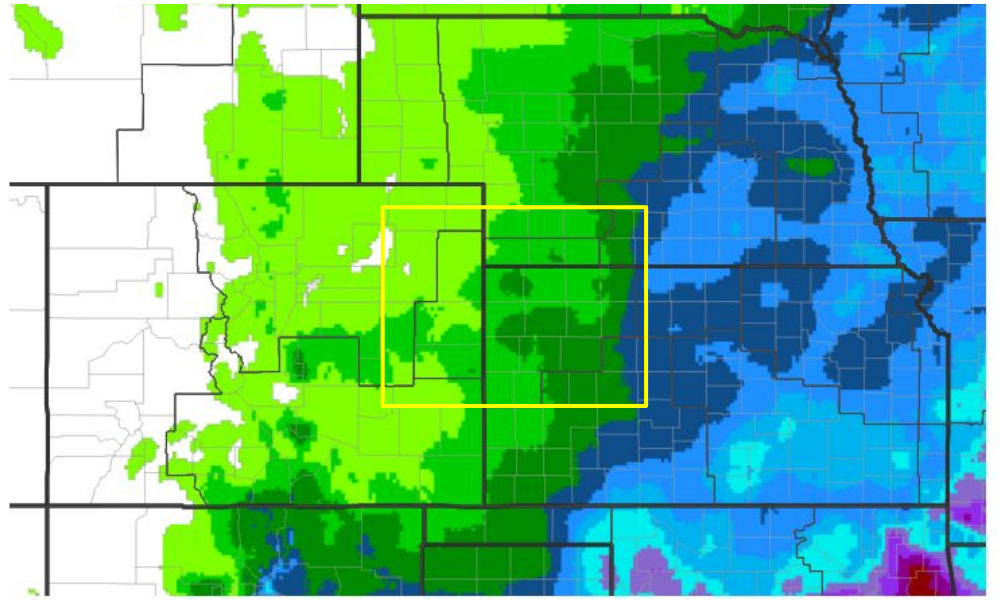


Image Caption: Weather Prediction Center [7-day precipitation forecast](#) valid Thursday July 4 to Thursday July 11



Long-Range Outlooks

The latest monthly and seasonal outlooks can be found on the [CPC homepage](#)

- For the month of July, well below normal precipitation and above normal temperatures are currently favored.
- This ties in with the anticipated increase in wildland fire potential and the continued anticipated effects of a warmer and drier pattern due to a transition to La Nina.

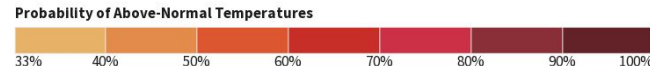
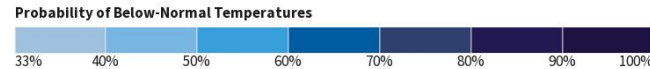
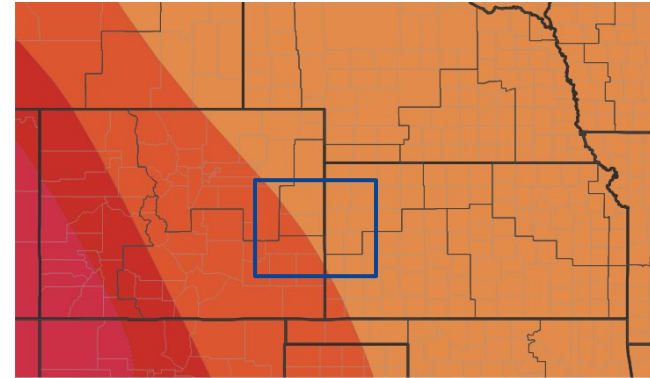
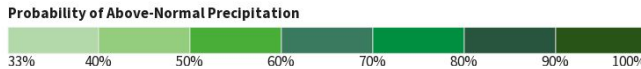
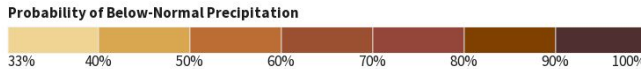
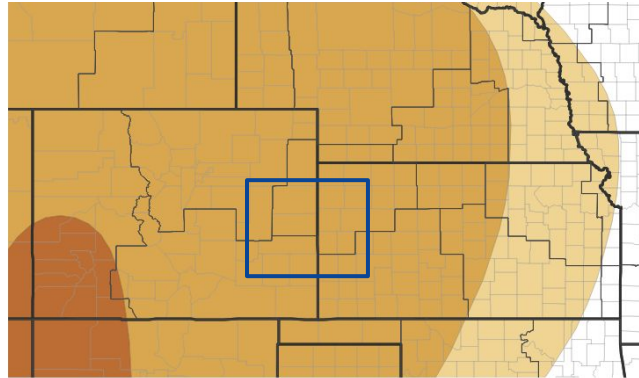


Image Captions:

Left - [Climate Prediction Center Monthly Temperature Outlook](#),

Right - [Climate Prediction Center Monthly Precipitation Outlook](#),

Valid July 2024





Drought Outlook

The latest monthly and seasonal outlooks can be found on the [CPC homepage](#)

- Increasing signal for drought development across the southeast
- With the anticipated drying out pattern this month; this does seem to be supported.

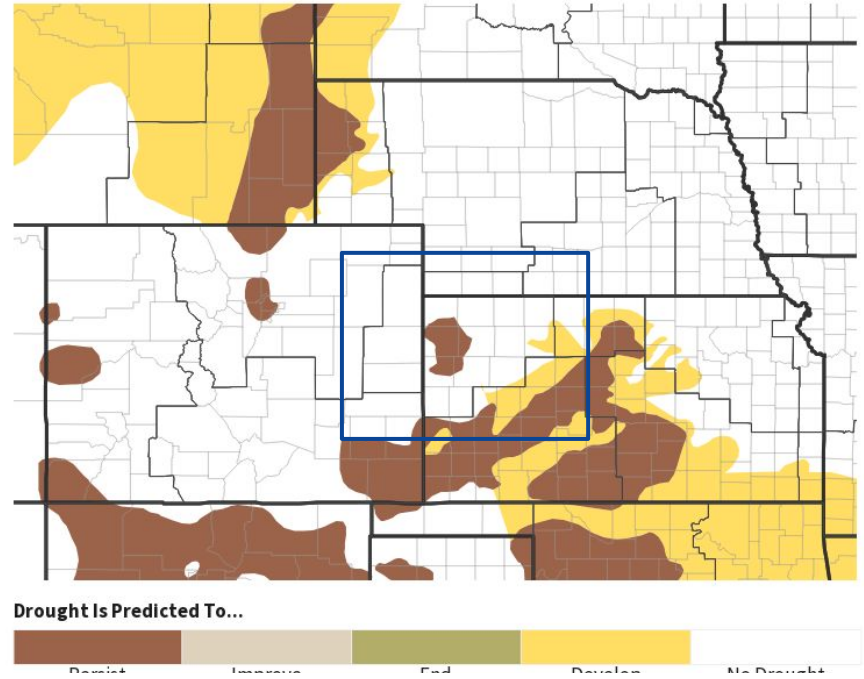


Image Caption:

Climate Prediction Center Monthly Drought Outlook Released **May 31, 2024**

Valid: **July 2024**

Links to the latest:

[Climate Prediction Center Monthly Drought Outlook](#)

[Climate Prediction Center Seasonal Drought Outlook](#)





Contact Information

For feedback, comments, questions specific to the Drought Information Statement please reach out to:

nws.goodland@noaa.gov or
tyler.trigg@noaa.gov

