

NWS GRAND JUNCTION COLORADO



A L O O K
BACK AT

DECEMBER 2024

WEATHER ACROSS E UTAH / W COLORADO

The month of December started out quiet and near seasonal, under an area of high pressure. This area of high pressure stuck around, allowing temperatures to climb several degrees above normal by the end of the first week. The only exception to this were several high elevation river valleys, including the Upper Yampa and especially the Upper Gunnison, where valley inversions kept temperatures well below normal for much of the month, regardless of the overall pattern. The second week of the month saw a round of light mountain snow and cooler temperatures to start the week, with high pressure behind it bringing a return to above normal temperatures and quiet weather. Another round of light snow moved through that weekend, bringing light accumulations to the northern and central mountains once again. Off and on light mountain snow would continue into the third week of the month, although temperatures remained, for the most part, well above normal. Snow would return with a snow storm over the San Juans on Christmas, along with lighter snow accumulations across the rest of the higher terrain. Valleys remained well above normal and saw mostly rainfall with this storm. This storm was followed by a weekend storm bringing substantial accumulations to all ranges in the days leading up to New Years. The month ended on a note similar to where it started, with quiet conditions and near-seasonal temperatures.



DECEMBER 2024

CLIMATE SUMMARY



TABLE OF CONTENTS

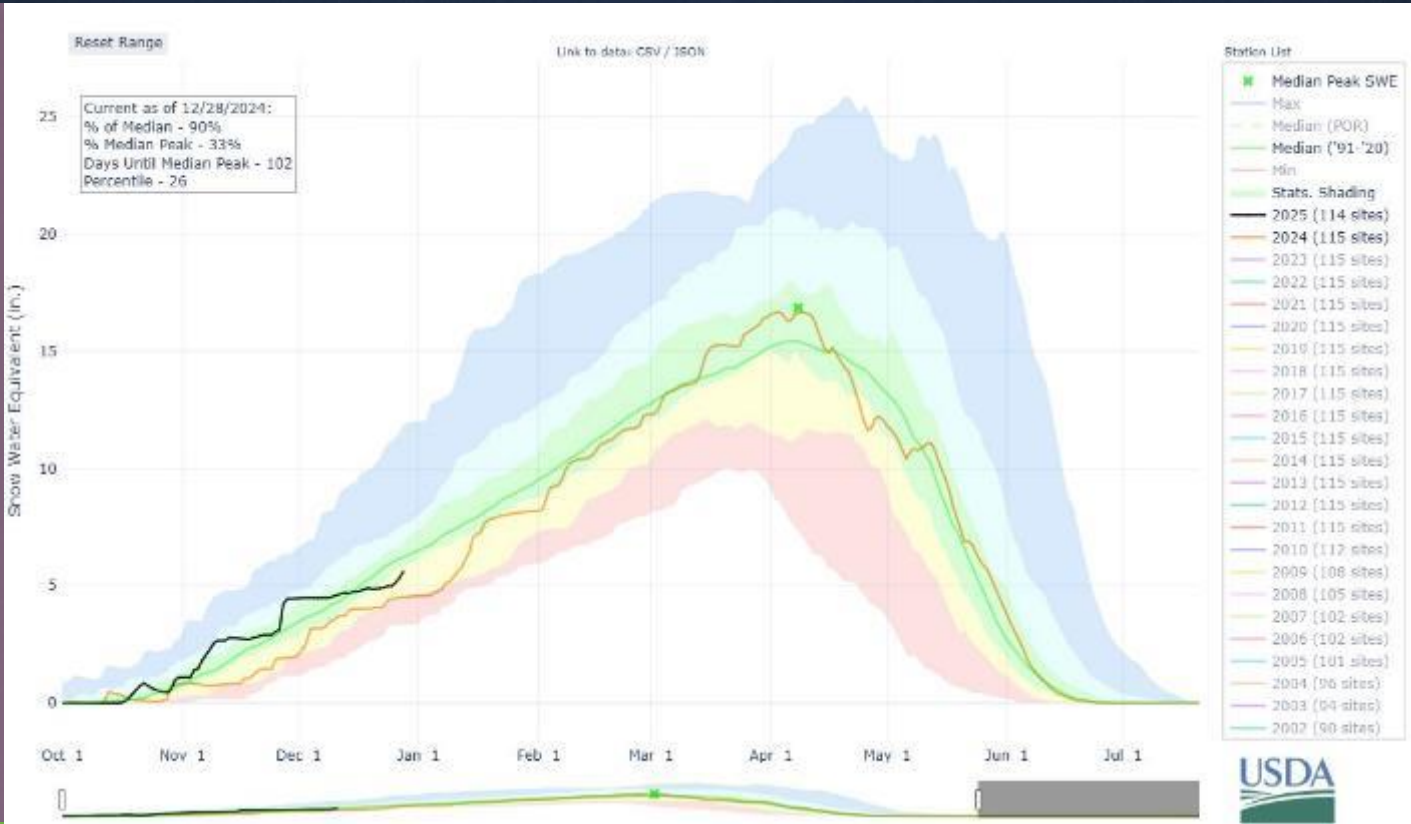
NOTE: all data mentioned is collected from our automated observing stations from 10 airports across the area. Some observers in more remote areas DECEMBER have measured warmer or colder temperatures, or more or less precipitation than mentioned in this summary.

PAGE #	PAGE TITLE
1	Cover / Monthly Weather Synopsis
2	Table of Contents
3	Story of the Month
4	Temperatures
5	Precipitation
6	Total Monthly Precipitation
7	Monthly Precipitation Departure from Normal
8	Daily Records Report
9	Drought Conditions, as of December 31 st
10	Snowpack Update, as of January 1 st
11	January Climate Outlook

STORY OF THE MONTH

SNOWPACK SNAPSHOT

Despite the warm and generally dry conditions during the month of December, the handful of Atmospheric River fuel storms we've seen so far this water year have kept the snowpack trending in the correct direction. The black line on this graph represents this water year's snowpack trace, while the orange line represents last year's snowpack trace. As it stands, we are doing better compared to this time last year. And with a second half of January expected to be colder and stormier than normal, we may be able to keep this trend going.



D E C E M B E R
2 0 2 4

TEMPERATURES



Location	Average Temp (°F) (VS Normal)	Warmest Temp (°F)	Coldest Temp (°F)
Aspen, CO	24.4 (+2.6)	48 on 12/29,	-1 on 12/31
Cortez, CO	31.6 (+3.0)	59 on 12/29	10 on 12/10
Craig, CO	22.0 (+3.3)	47 on 12/29	-5 on 12/11
Durango, CO	31.6 (+5.6)	57 on 12/3	6 on 12/11
Grand Junction, CO	36.2 (+7.8)	52 on 12/4, 5	18 on 12/10
Meeker, CO	29.7 (+7.3)	56 on 12/20	4 on 12/31
Montrose, CO	32.8 (+5.5)	59 on 12/29	11 on 12/11
Rifle, CO	29.5 (+3.9)	47 on 12/17	7 on 12/11
Canyonlands Airport, UT	31.8 (+4.2)	50 on 12/23	13 on 12/12
Vernal, UT	30.1 (+7.8)	47 on 12/23	12 on 12/10, 11



D E C E M B E R
2 0 2 4

PRECIPITATION



Location	Total Precipitation (in.)	Departure from Normal (in.)
Aspen, CO	0.40	-0.42
Cortez, CO	0.03	-0.77
Craig, CO	0.40	-0.50
Durango, CO	0.20	-0.67
Grand Junction, CO	0.29	-0.31
Meeker, CO	0.69	-0.19
Montrose, CO	0.16	-0.30
Rifle, CO	0.28	-0.29
Canyonlands Airport, UT	T	-0.53
Vernal, UT	0.03	-0.52

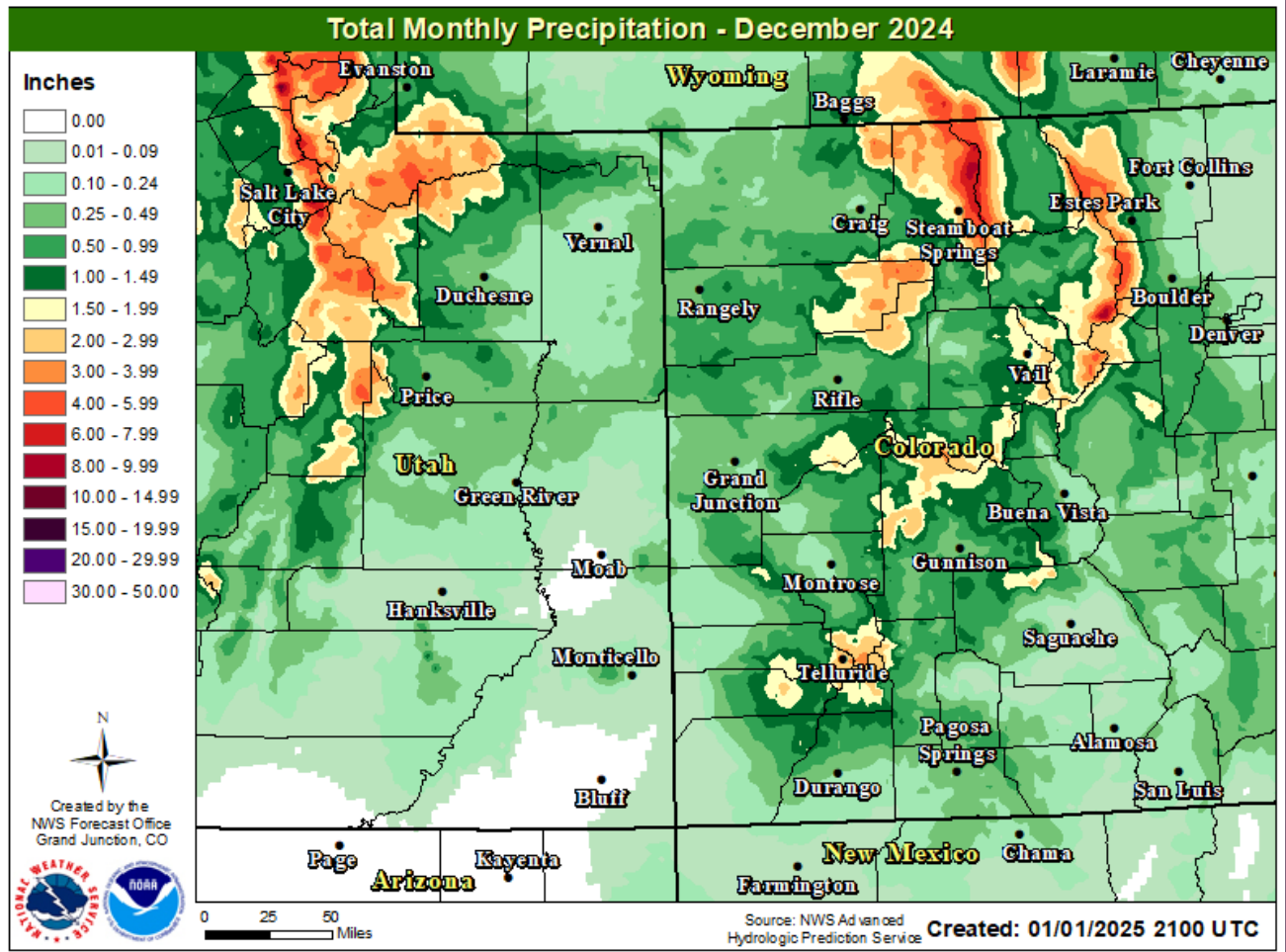


DECEMBER 2024

CLIMATE SUMMARY



TOTAL MONTHLY PRECIPITATION



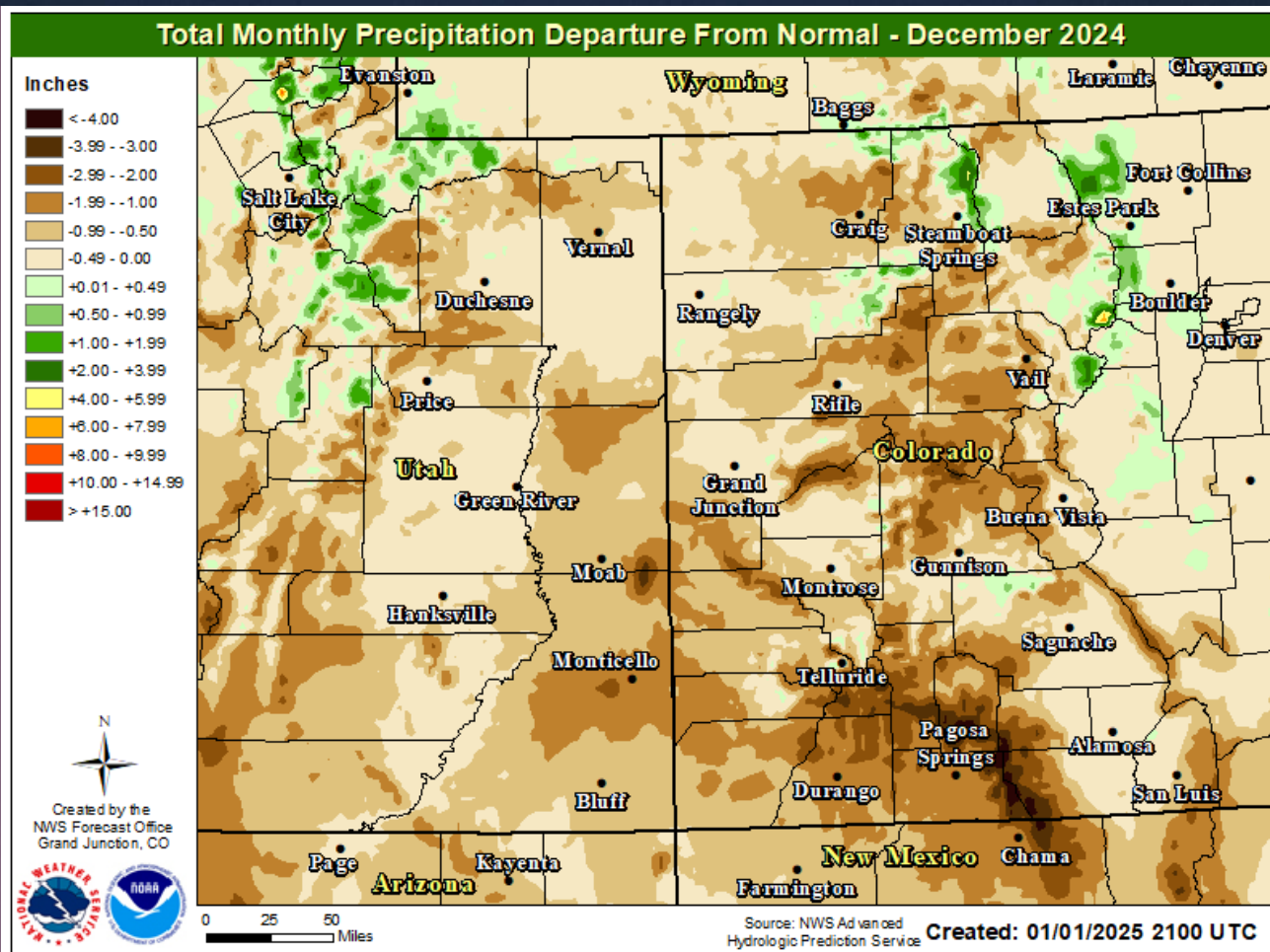
DECEMBER 2024

CLIMATE SUMMARY



TOTAL MONTHLY PRECIPITATION

DEPARTURE FROM NORMAL



DECEMBER 2024

CLIMATE SUMMARY



DAILY RECORDS

REPORT

A total of 0 daily records were set across the primary climate sites

Site	Date	Record Type	New Record	Previous Record
------	------	-------------	------------	-----------------

High Max

Low Max

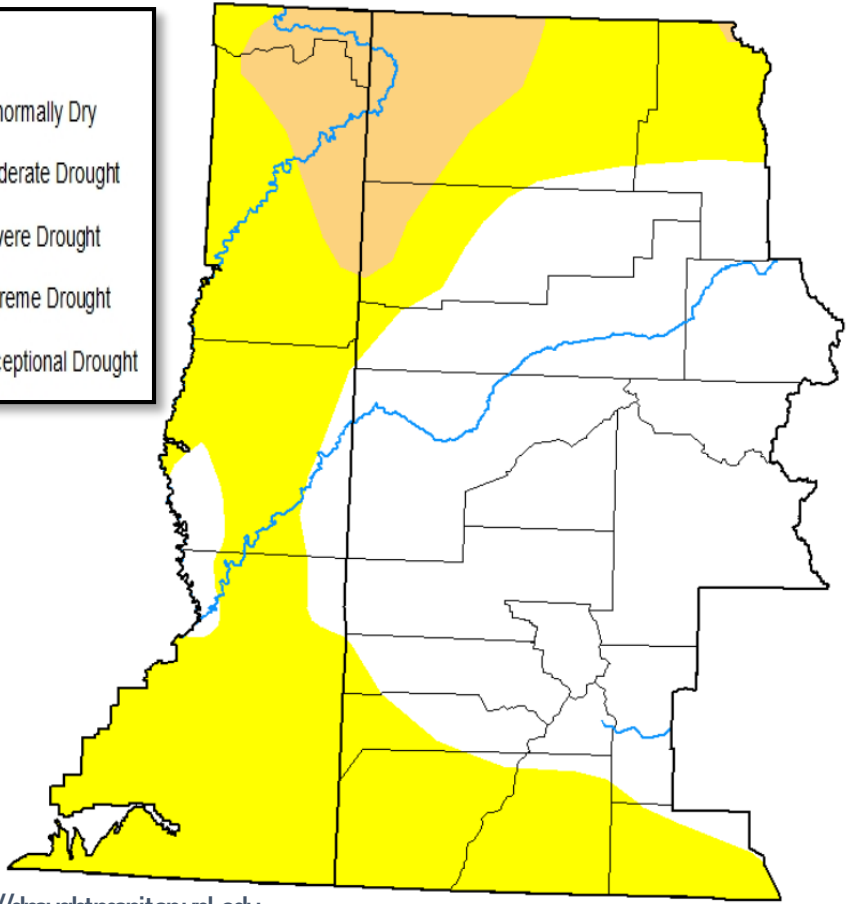
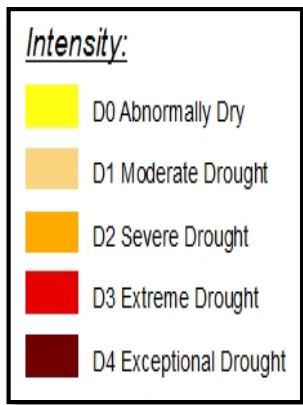
Precip

High Min

Low Min

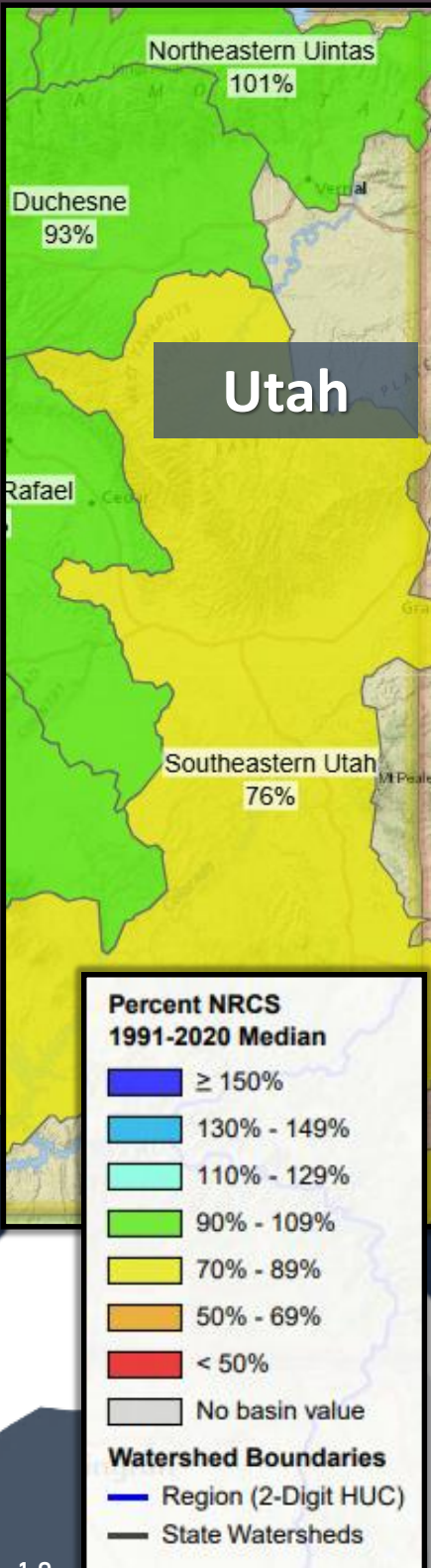


The month of December saw below normal precipitation and above normal temperatures across much of eastern Utah and western Colorado. This allowed for an expansion of Abnormally Dry (D0) conditions for nearly all of eastern Utah and northwestern and southwestern Colorado. Additionally, an area of Moderate (D1) drought has expanded over northeastern Utah and northwestern Colorado.

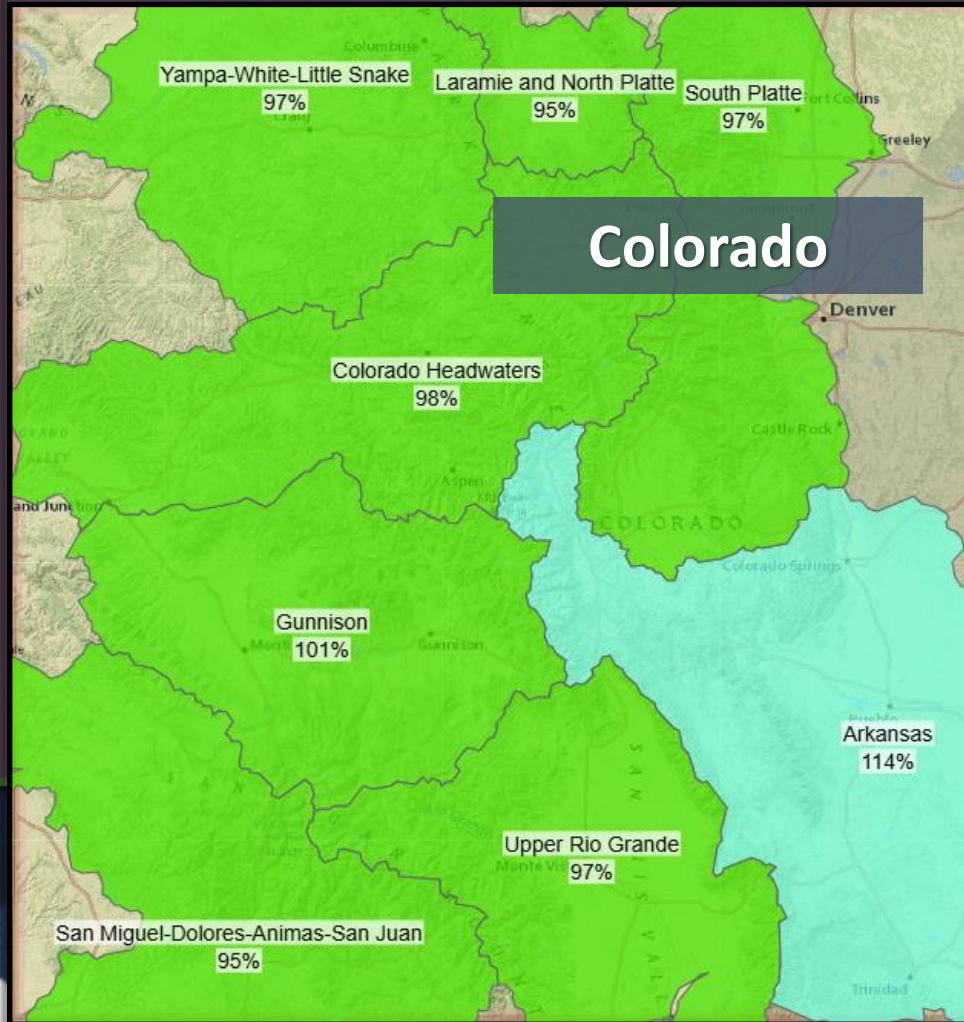


Source: <http://droughtmonitor.unl.edu>





While the snowpack was well above normal headed into December, the unusually warm and dry conditions during the month led to some degradation in the snowpack. As it stands, all Western Colorado basins are sitting in the 95-105% of normal range, as is the Northeastern Uintas. The Duchesne basin is sitting at 90-100% of normal, while the Southeastern Utah basin is doing the worst, at 70-80% of normal.



JANUARY
2025

OUTLOOK

TEMPERATURES & PRECIPITATION



The latest guidance from the Climate Prediction Center is leaning toward above normal temperatures (33-40%) across northeast Utah and northwest Colorado, while there is a slightly higher tendency (40-50%) toward above normal temperatures for the southern half of the area. As far as precipitation is concerned, guidance is leaning toward (33-40%) above normal precipitation across northeast Utah and northwest Colorado, and leaning toward (33-40%) below normal precipitation for the Four Corners region of southeast Utah and southwest Colorado. In between, equal chances of above normal or below normal precipitation is indicated.



Above

Temperatures



Precipitation

Above

Below

Equal
Chances