

# Preliminary Damage Survey

## **Ravenna, NE Tornado** **Buffalo & Sherman Counties**

**Date:** April 26th, 2024

**Estimated time:** 12:16-12:31 PM CDT

**Maximum EF-Scale Rating:** EF1

**Estimated max winds:** 90 MPH

**Maximum path width:** 175 yards

**Path length:** 4.76 miles



**Photos of minor home  
and vehicle damage  
at a farmstead  
northeast of Ravenna**



**NATIONAL WEATHER SERVICE**  
OCEANIC AND ATMOSPHERIC ADMINISTRATION



# Preliminary Damage Survey

## **Rockville, NE Tornado** Sherman County

**Date:** April 26th, 2024

**Estimated time:** 12:32-12:48 PM CDT

**Maximum EF-Scale Rating:** EF1

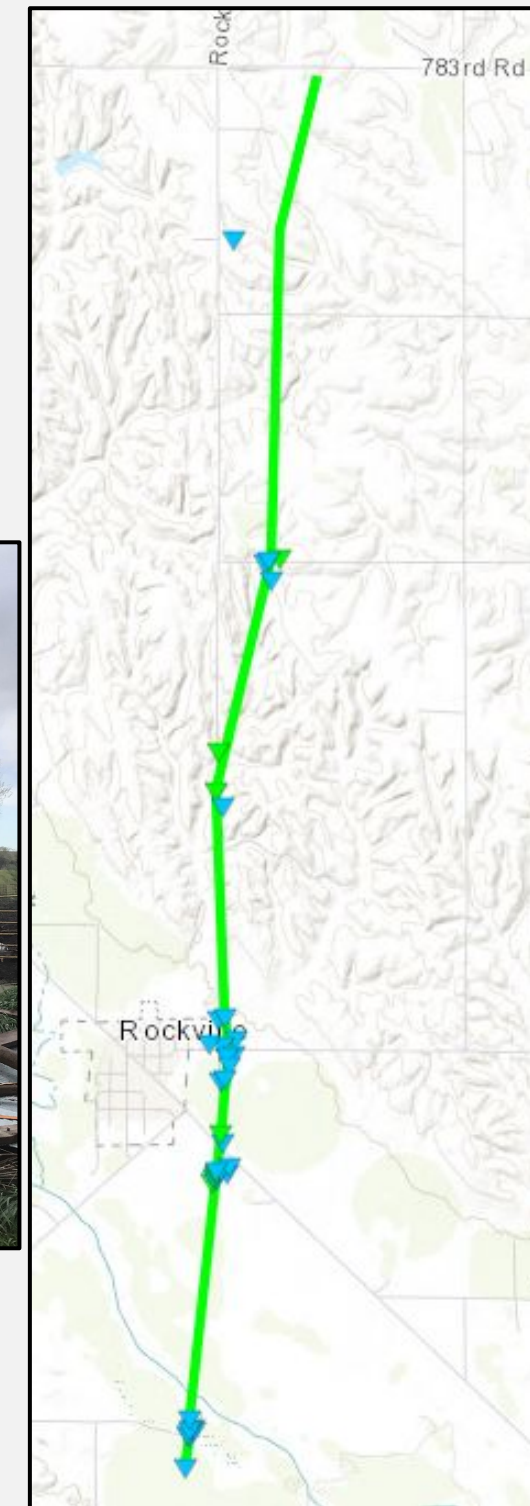
**Estimated max winds:** 105 MPH

**Maximum path width:** 100 yards

**Path length:** 5.71 miles



**Photos of damage  
east and southeast  
of Rockville**



## **Ravenna, NE Tornado**

### Preliminary Damage Survey Additional Information

This tornado was the first tornado of the day and started near the ethanol plant east of Ravenna in Buffalo County, where minor damage occurred on a catwalk. The tornado moved north-northwest during its lifecycle.

The most significant damage was at a residence in southern Sherman County, where outbuildings were damaged/destroyed.

The tornado was rated an EF1 with an estimated peak wind speed of 90 MPH, based upon damage to a power pole and the structures. The tornado faded away on or very near State Highway 68 about 3 miles north of Ravenna in Sherman County.

## **Rockville, NE Tornado**

### Preliminary Damage Survey Additional Information

The same supercell spawned a second tornado in Sherman County, this time starting out south of Rockville. This tornado was first sighted in a field, after which it moved north and cross the Middle Loup River. The tornado caused EF1 rated damage to a home and damaged outbuildings just south of town.

The tornado moved north along the east edge of Rockville and damaged trees, a couple of grain bins and outbuildings. It continued to move north roughly along Rockville Road and snapped several power poles. Based upon reports, the tornado likely dissipated in open country about 4 miles north of town.

The EF1 rating and estimated peak wind speed of 105 MPH was based upon the snapped power poles north of town.





**NATIONAL WEATHER SERVICE**  
OCEANIC AND ATMOSPHERIC ADMINISTRATION



# Preliminary Damage Survey

## **Farwell, NE Tornado** **Howard County**

**Date:** April 26th, 2024

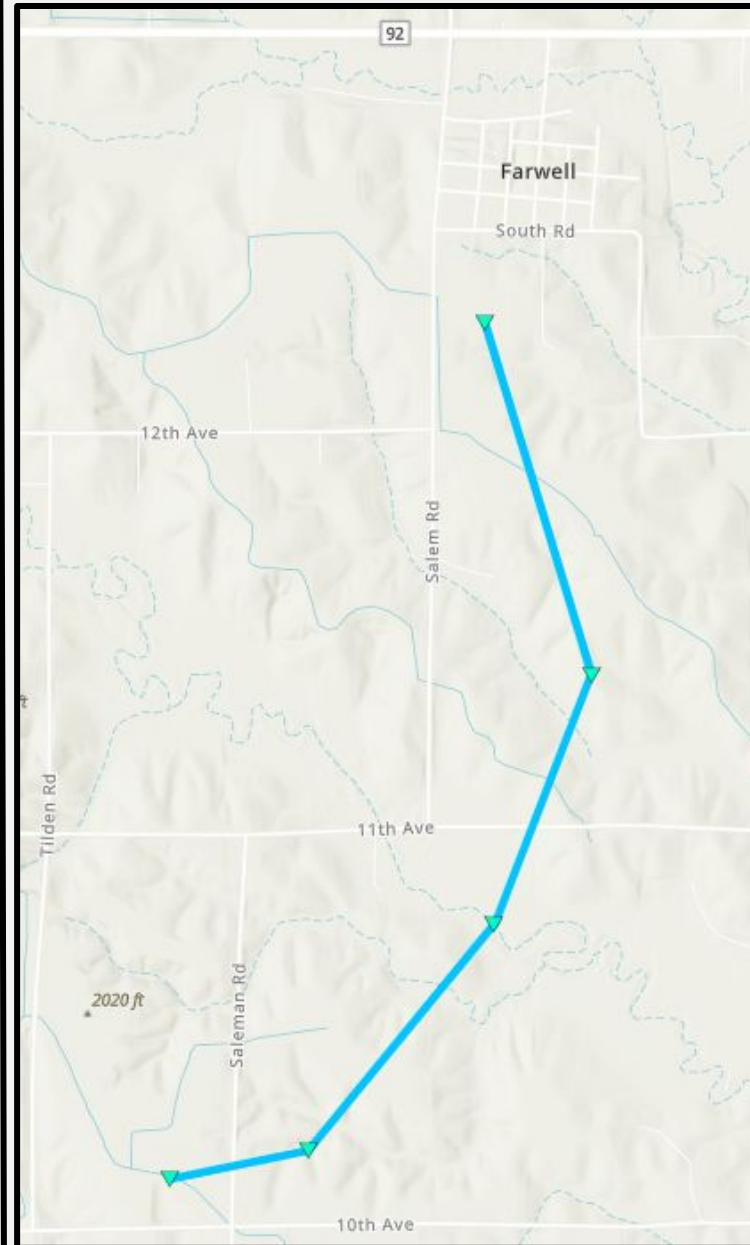
**Estimated time:** 12:52-12:58 PM CDT

**Maximum EF-Scale Rating:** EF0

**Estimated max winds:** 75 MPH

**Maximum path width:** 50 yards

**Path length:** 2.69 miles



An eyewitness, who provided photos, times and detailed locations, documented a short-lived tornado south of Farwell in Howard County. This tornado occurred just prior to the development of the tornado that eventually passed near Elba.

Along its curvy path, this nearly 3 mile long tornado overturned two center irrigation pivots and damaged some trees south of Farwell. Scouring along the ground was easily visible. The tornado dissipated just south of Farwell.



**NATIONAL WEATHER SERVICE**  
Weather Forecast Office • Hastings, NE



NATIONAL WEATHER SERVICE  
OCEANIC AND ATMOSPHERIC ADMINISTRATION



# Preliminary Damage Survey

## Elba, NE Tornado Howard County

Date: April 26th, 2024

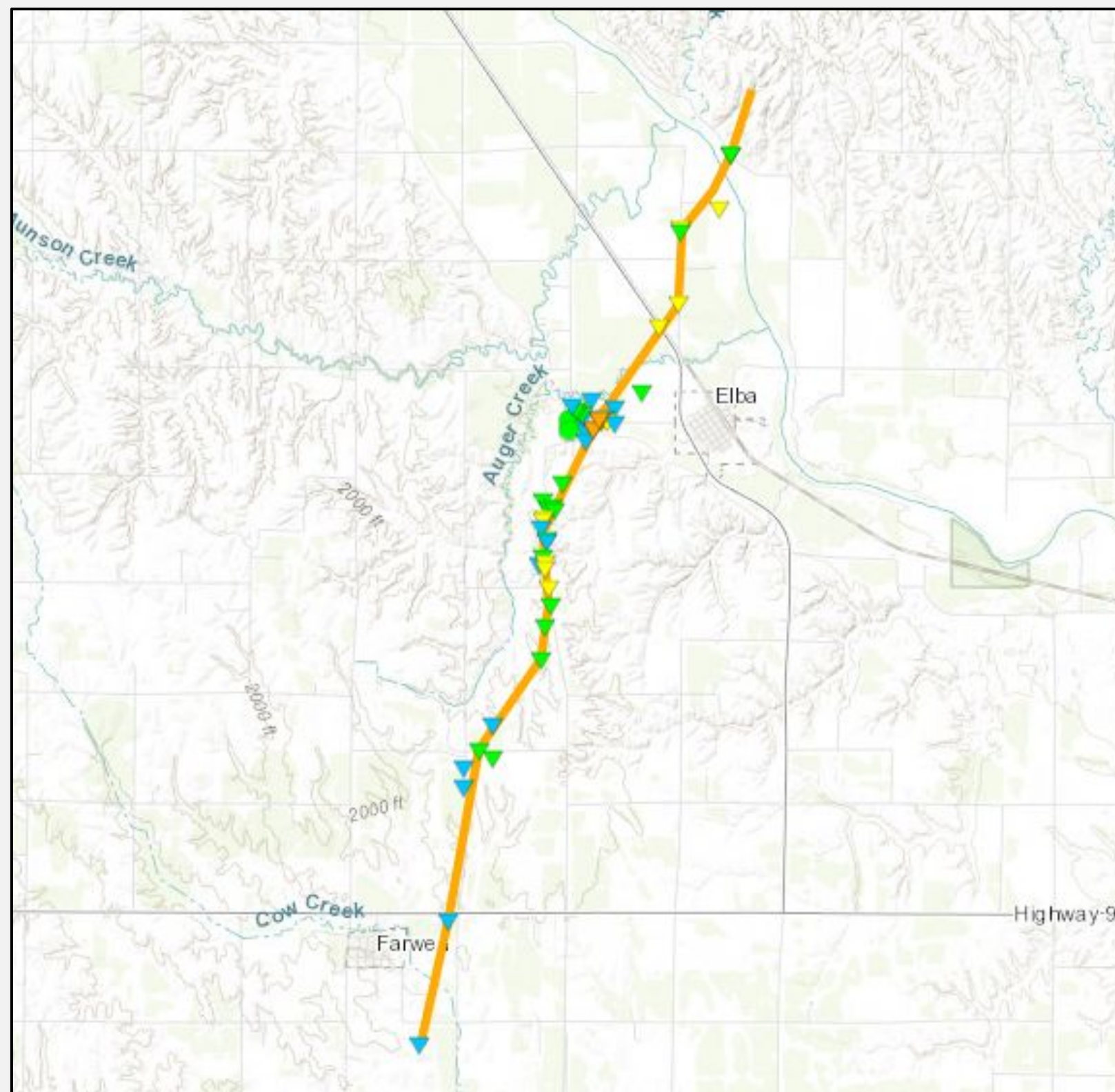
Estimated time: 12:58-1:21 PM CDT

Maximum EF-Scale Rating: EF3

Estimated max winds: 145 MPH

Maximum path width: 600 yards

Path length: 9.54 miles



NATIONAL WEATHER SERVICE  
Weather Forecast Office • Hastings, NE

# Elba, NE Tornado

## Preliminary Damage Survey Additional Information

Initially narrow, this tornado started south of Farwell, and would eventually strengthen into a large EF3 rated tornado.

The tornado moved across rural areas north of Farwell causing tree damage and overturning pivots. As it emerged onto the North Loup River Valley just east of Elba, it gained strength.

Just west of Elba, a farmstead sustained heavy damage. A well built metal building was demolished along with extensive damage to the nearby home. This location was deemed to have the strongest winds, estimated at 145 MPH.

The tornado was estimated to be around 600 yards wide as it crossed Highway 11 just northwest of Elba. A long stretch of power poles was knocked down along Odell Road.

The tornado eventually moved onto pasture ground and dissipated north of Wolbach.





**NATIONAL WEATHER SERVICE**  
OCEANIC AND ATMOSPHERIC ADMINISTRATION



# Preliminary Damage Survey

## **Wolbach, NE Tornado** **Howard & Greeley Counties**

**Date:** April 26th, 2024

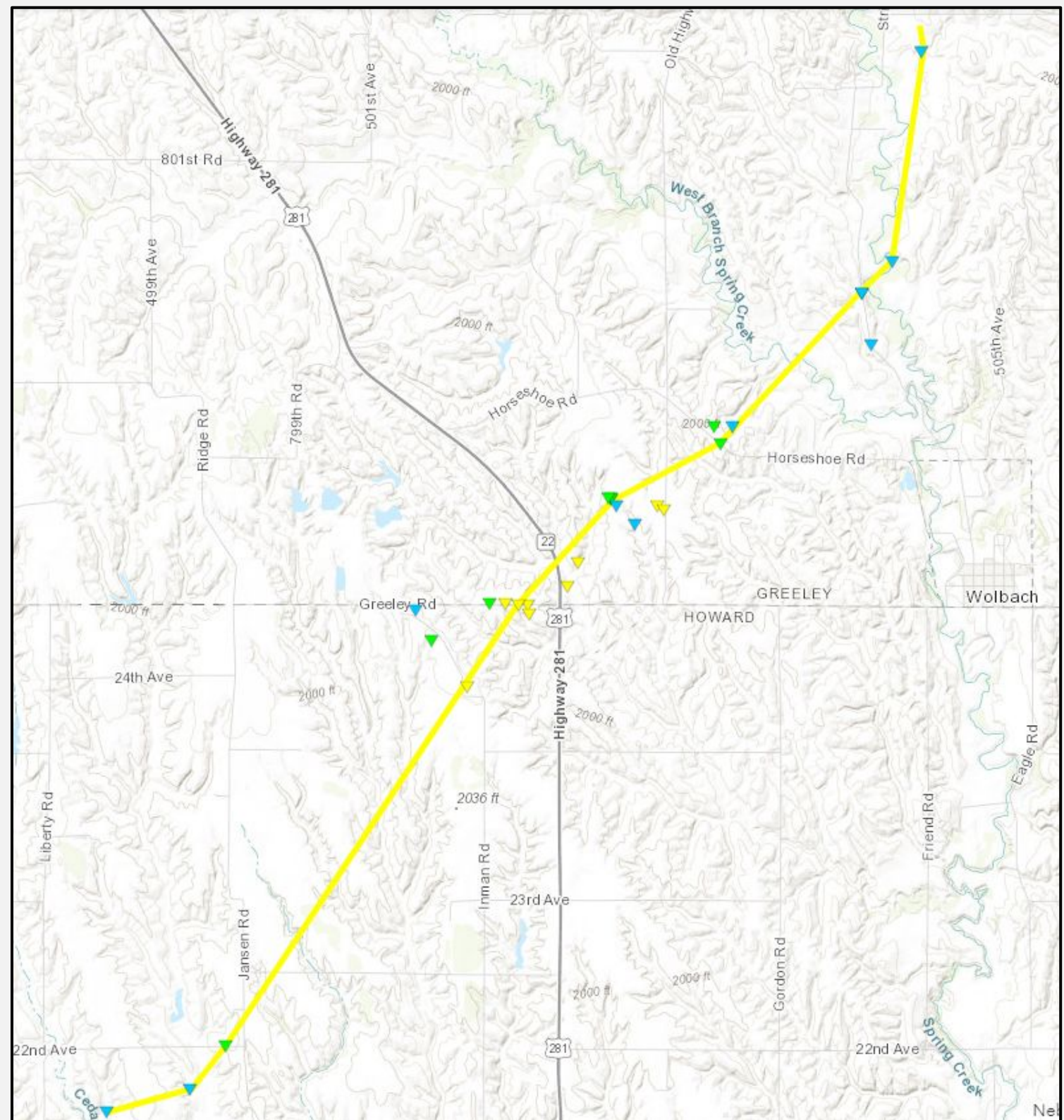
**Estimated time:** 1:32-1:54 PM CDT

**Maximum EF-Scale Rating:** EF2

**Estimated max winds:** 135 MPH

**Maximum path width:** 880 yards

**Path length:** 9.59 miles



**NATIONAL WEATHER SERVICE**  
Weather Forecast Office • Hastings, NE

# Wolbach, NE Tornado

## Preliminary Damage Survey Additional Information

Through a roughly 10-minute process when the supercell did not move much, a 4th tornado formed in northern Howard County. It would eventually grow into the widest tornado in the NWS Hastings forecast area, at least ½ mile wide at times.

This tornado was rated an EF2 with estimated peak wind speeds of 135 MPH based upon metal power pole damage just west of the Highway 281/22 junction near Wolbach. The tornado had previously destroyed a metal building to the southwest, and would go on to destroy a couple of wood framed outbuildings to the northeast of Highway 281. The south edge of the tornado likely passed just north of the Highway 281/22 junction, and was in this general area that the tornado was at its widest. The tornado marched northeast, damaging at least one residence, outbuildings, trees and pivots.

As the supercell slowed north of Wolbach, this tornado likely diminished and the supercell began the process of developing another tornado to the east.







**NATIONAL WEATHER SERVICE**  
OCEANIC AND ATMOSPHERIC ADMINISTRATION



# Preliminary Damage Survey

**Wolbach/Primrose, NE**  
**Tornado** in **Greene & Boone Counties**

**Date:** April 26th, 2024

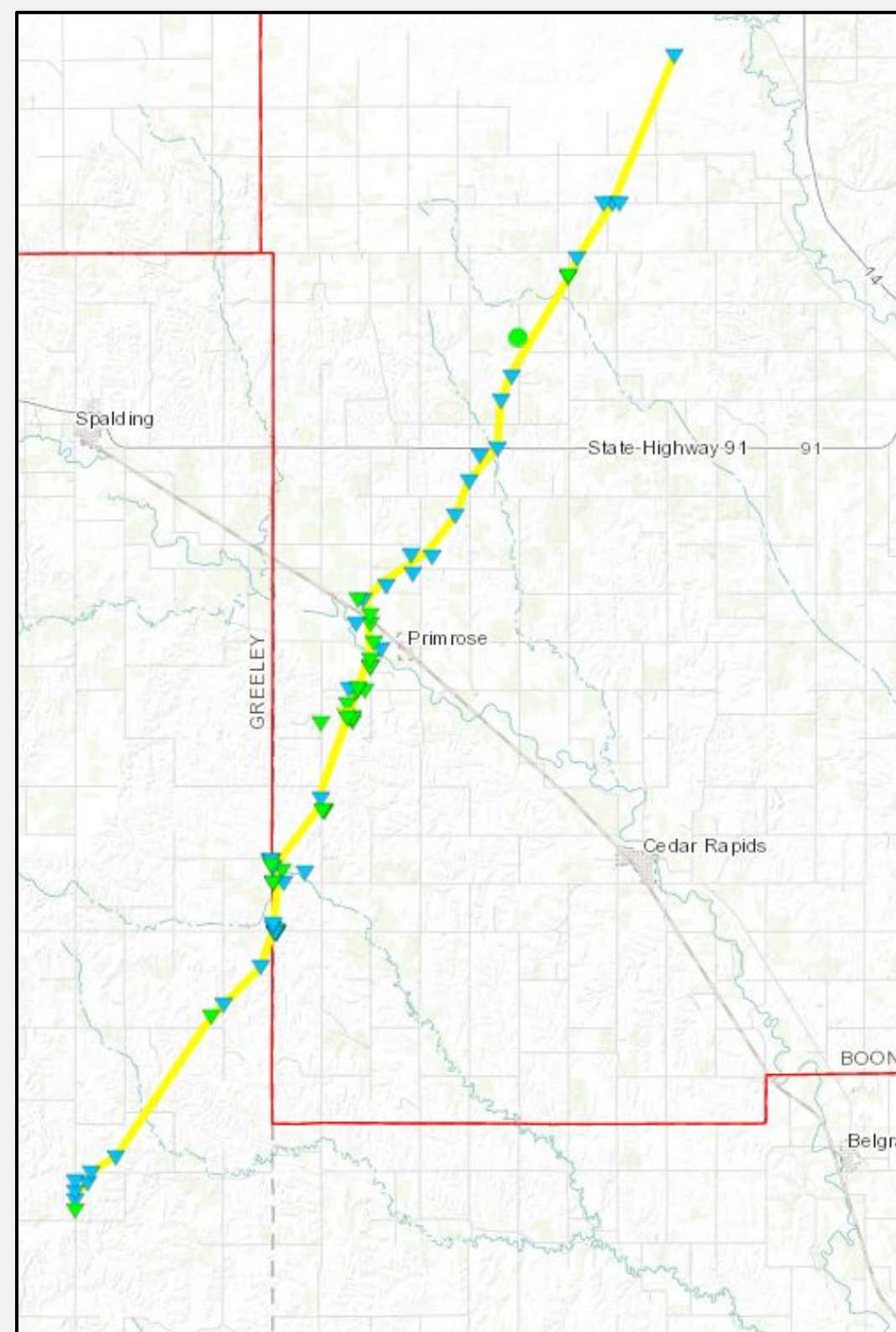
**Estimated time:** 2:04-3:10 PM CDT

**Maximum EF-Scale Rating:** EF2

**Estimated max winds:** 130 MPH

**Maximum path width:** 500 yards

**Path length:** 27.49 miles



**NATIONAL WEATHER SERVICE**  
Weather Forecast Office • Hastings, NE

# Wolbach/Primrose Tornado

## Preliminary Damage Survey

### Additional Information

In Greeley County, damage was mostly to pivots/trees, moving over open country and into Boone County along Highway 56. In Boone County, the tornado caused minor damage to a home on a farmstead at the county line along with quite a bit of tree damage in the general area.

The tornado moved north and appeared to strengthen some as it flipped and tossed several center irrigation pivot systems north of Highway 56. Power poles were snapped and debris was lifted into power lines.

The tornado moved north-northeast, the most significant damage was found about 2 miles southwest of Primrose. A home was damaged, including the three-car garage being totally ripped away along with much of the roof. Several outbuildings were damaged or destroyed. Trees were damaged and power poles were snapped.

In its final few miles, the tornado damaged trees and center pivot irrigation systems in several places. Extensive damage to a livestock facility and several snapped power poles was noted about halfway between Petersburg and Primrose. The tornado likely dissipated in open country as it approached the Beaver Creek southwest of Petersburg.

