



Drought Information Statement for SE SD, SW MN, NW IA, Far NE Neb

Valid October 10, 2024

Issued By: WFO Sioux Falls, SD

Contact Information: w-fsd.webmaster@noaa.gov

- This product will be updated November 2024 or sooner if drought conditions change significantly.
- Please see all currently available products at <https://drought.gov/drought-information-statements>.
- Please visit <https://www.weather.gov/fsd/DroughtInformationStatement> for previous statements.
- Please visit <https://www.drought.gov/drought-status-updates> for regional drought status updates.

- WELL BELOW NORMAL PRECIPITATION SINCE JUNE FLOODING BRINGS RETURN OF DROUGHT CONDITIONS TO REGION.
- WIDESPREAD ABNORMALLY DRY CONDITIONS OR MODERATE DROUGHT WITH AREAS OF SEVERE DROUGHT.
- DRY CONDITIONS EXPECTED TO PERSIST INTO AT LEAST MID TO LATE OCT.





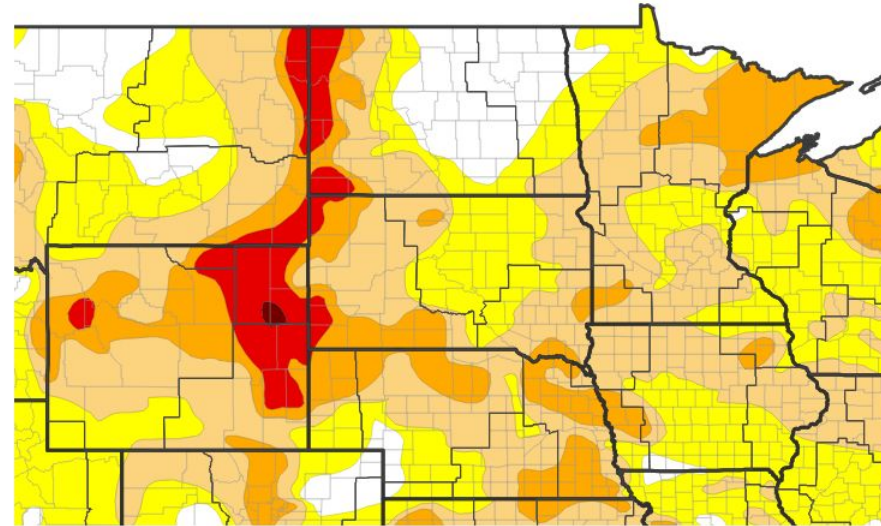
U.S. Drought Monitor.

Link to the [latest U.S. Drought Monitor](#) for SE South Dakota, SW Minnesota, NW Iowa, far NE Nebraska

...SEVERAL MONTHS OF WELL BELOW NORMAL PRECIPITATION BRINGS A RETURN OF DROUGHT CONDITIONS TO THE REGION...

- Drought intensity and Extent
 - **D2 (Severe Drought)**: Portions of southeast South Dakota, southwest Minnesota and northeast Nebraska.
 - **D1 (Moderate Drought)**: Much of southeast South Dakota, northwest Iowa, southwest Minnesota and northeast Nebraska.
 - **D0: (Abnormally Dry)**: Central South Dakota.

U.S. Drought Monitor



U.S. Drought Monitor



Source(s): NDMC, NOAA, USDA; image courtesy of Drought.gov

Data Valid: 10/08/24

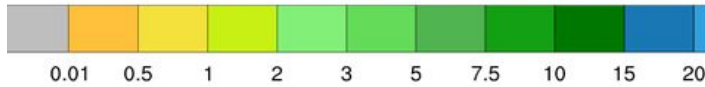
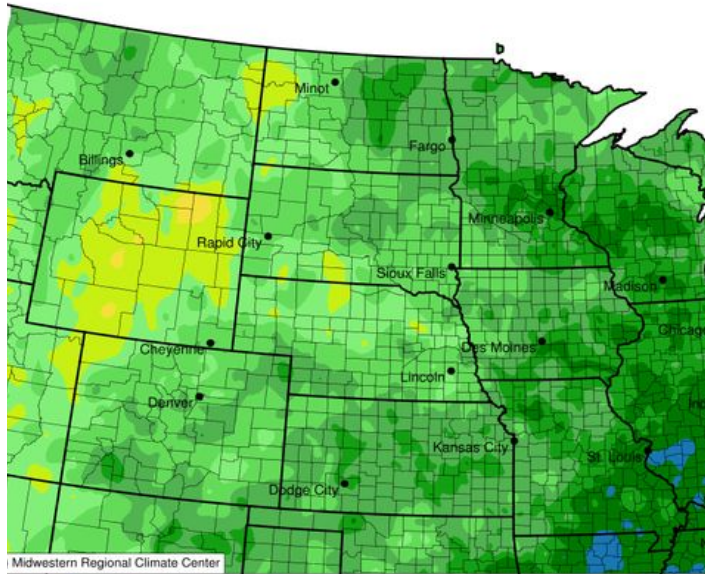




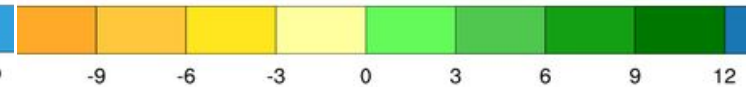
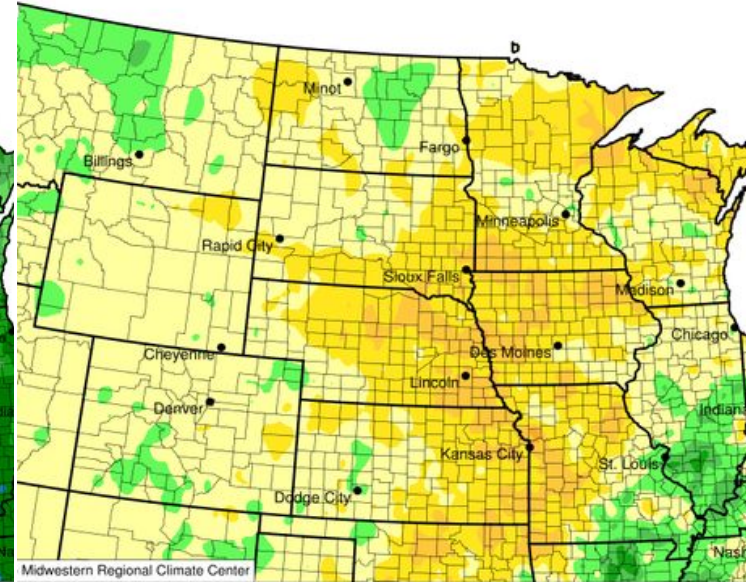
Precipitation - Past 90 Days.

- Since the historic June flooding, well below normal precipitation has occurred in most locations. (Top 10 driest 90 day period in some areas)
- Precipitation deficits over the past 90 days of as much as 4-8 inches

90-Day Precipitation Accumulation



90-Day Precip Departure From Normal



Jul-Sep Precip

- Sioux Falls - 3.40" (3rd Driest)
- Spencer, IA - 5.44" (8th Driest)
- Mitchell - 3.76" (12th Driest)
- Vermillion - 4.29" (6th Driest)
- Pipestone - 4.44" (5th Driest)
- Sioux City - 10.03"





Summary of Impacts.

Links: See/submit [Condition Monitoring Observer Reports \(CMOR\)](#) and view the [Drought Impacts Reporter](#)

Hydrologic Impacts

- River and stream levels have been on decline through the second half of summer into the fall, although most still remain in “normal” ranges. Below normal streamflow has been noted through portions of the Vermillion, Big Sioux and Rock River Basins. Ground water levels at Renner, SD have fallen back to within a tenth of a foot of 2023 values at this same time.

Agricultural Impacts

- There are no known impacts at this time

Fire Hazard Impacts

- Several counties and municipalities have implemented burn bans due to the dry conditions. A handful of Red Flag Warnings have already been issued this fall for critical fire weather conditions.

Other Impacts

- There are no known impacts at this time

Mitigation Actions

- None reported





Agricultural and Soil Moisture Impacts

SD

As of Oct 6th	Very Short Moisture	Short Moisture	Adequate Moisture	Moisture Surplus
Topsoil	29%	42%	29%	0%
Subsoil	25%	36%	39%	0%

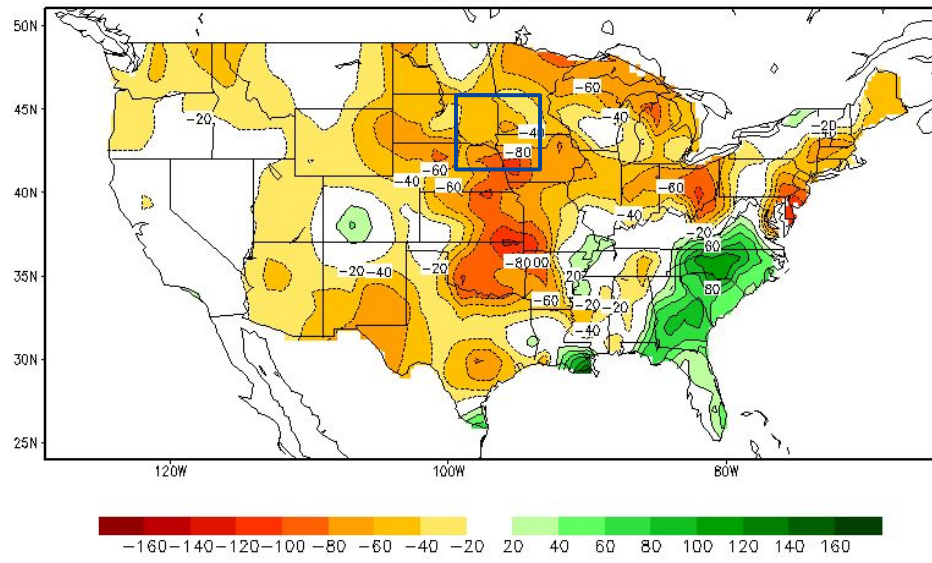
IA

As of Oct 6th	Very Short Moisture	Short Moisture	Adequate Moisture	Moisture Surplus
Topsoil	22%	42%	36%	0%
Subsoil	16%	44%	39%	1%

MN

As of Oct 6th	Very Short Moisture	Short Moisture	Adequate Moisture	Moisture Surplus
Topsoil	17%	40%	42%	1%
Subsoil	12%	28%	58%	2%

Calculated Soil Moisture Anomaly (mm)
OCT 09, 2024



USDA Crop Progress and Condition Reports

[South Dakota](#)

[Minnesota](#)

[Iowa](#)

[Nebraska](#)



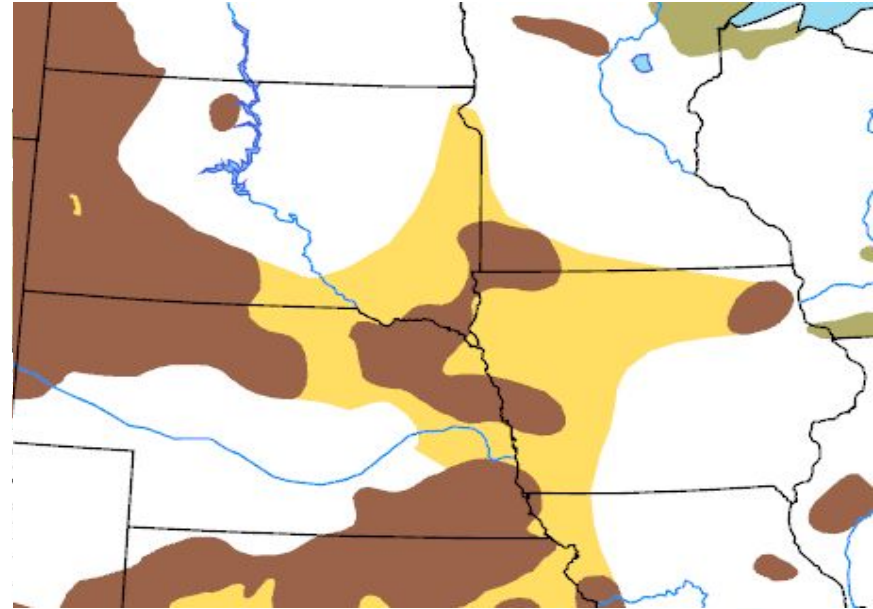


Drought Outlook.

The latest monthly and seasonal outlooks can be found on the [CPC homepage](#)

- Dry conditions are expected into at least mid to late October with no precipitation forecast over the next 7-days.
- Longer range outlooks for late October into early November favor above normal temperatures with slightly elevated odds of below normal precipitation persisting.
- These factors favor current drought conditions to either persist or continue to expand over the next 3 months.

Seasonal (3-Month) Drought Outlook for September 19, 2024–December 31, 2024



Drought Is Predicted To...



Source(s): Climate Prediction Center; image courtesy of Drought.gov

Last Updated: 09/19/24

Acknowledgements

The drought monitor is a multi-agency effort involving NOAA's National Weather Service and National Climatic Data Center, the USDA, state and regional center climatologists and the National Drought Mitigation Center. Information for this statement has been gathered from NWS and FAA observation sites, cooperative and volunteer observations, USDAFS, the USDA and USGS.



National Oceanic and Atmospheric Administration

U.S. Department of Commerce

National Weather Service
Sioux Falls, SD