



Newnan-Coweta EF-4 Tornado

Response and Recovery Overview

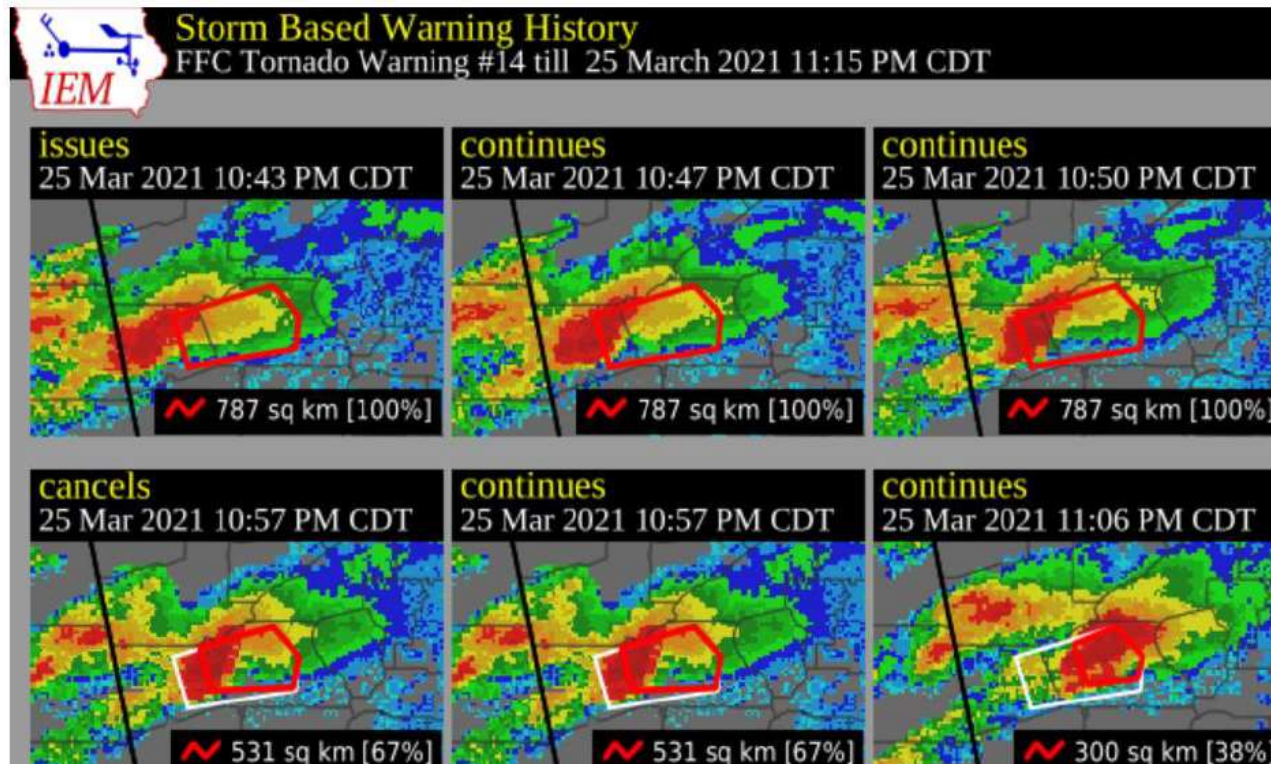
With

Coweta County Emergency Management

Think about
your current
capabilities



Impact Timeline



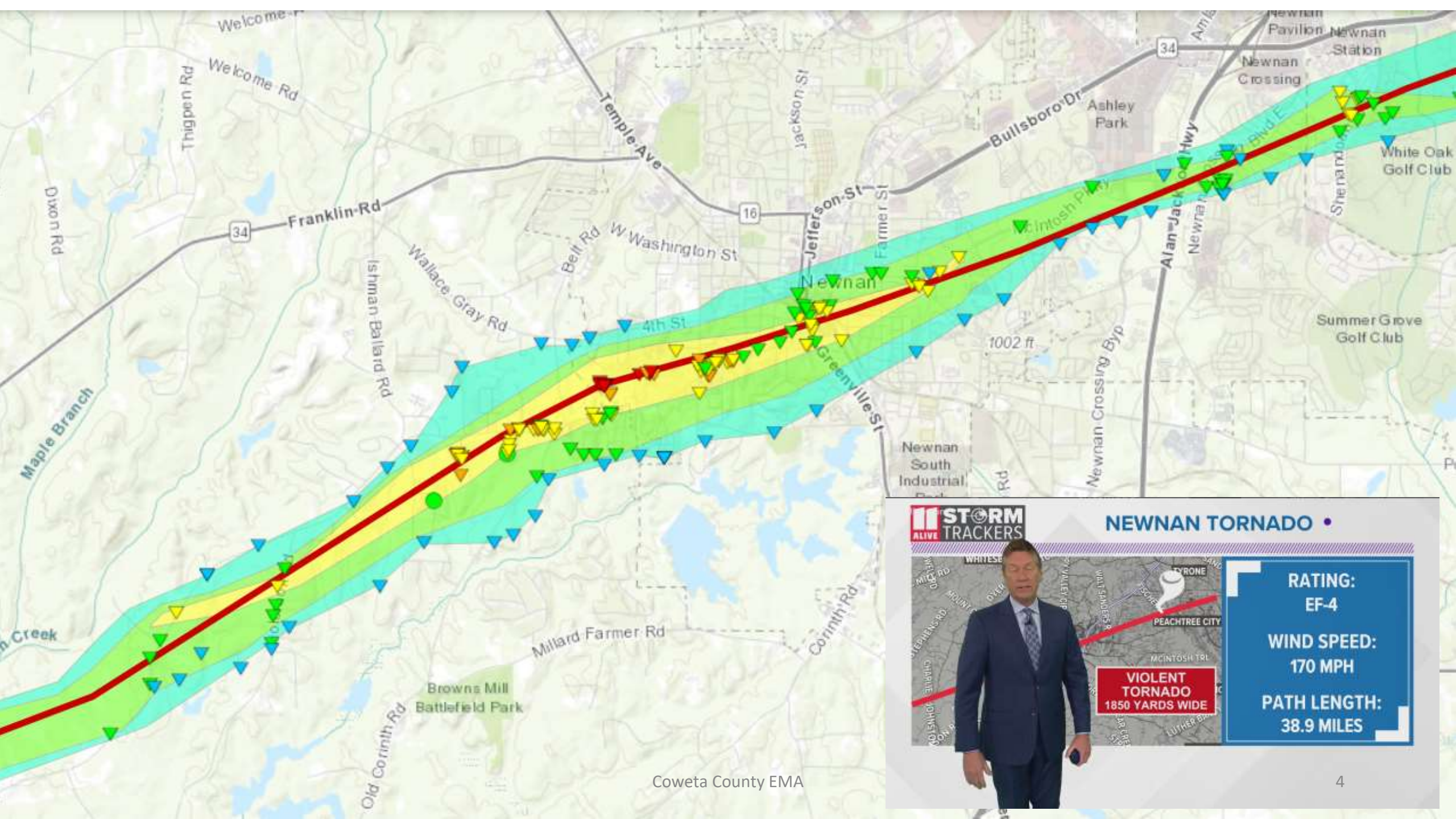
Please note radar is Central Time Zone

March 25, 2021

- 7:45 PM EDT Tornado WATCH issued
- 11:35 PM EDT EOC Level 3 Full Activation
- 11:43 PM EDT Tornado Warning (Polygon) issued
- 11:47 PM EDT Tornado Warning “Confirmed”
- 11:50 PM EDT Tornado Warning updated to Particularly Dangerous Situation (PDS)

March 26, 2021

- 12:06 AM EDT Tornado Emergency issued Catastrophic Damage Level
- 12:10 AM EDT new Tornado Warning issued
- 12:32 AM EDT Tornado Warnings Cancelled
- 3:00 AM EDT Local State of Emergency declared
- 1:00 AM EDT – 8:00 AM EDT Search and Rescue Ops



Emergency 911 Calls for help

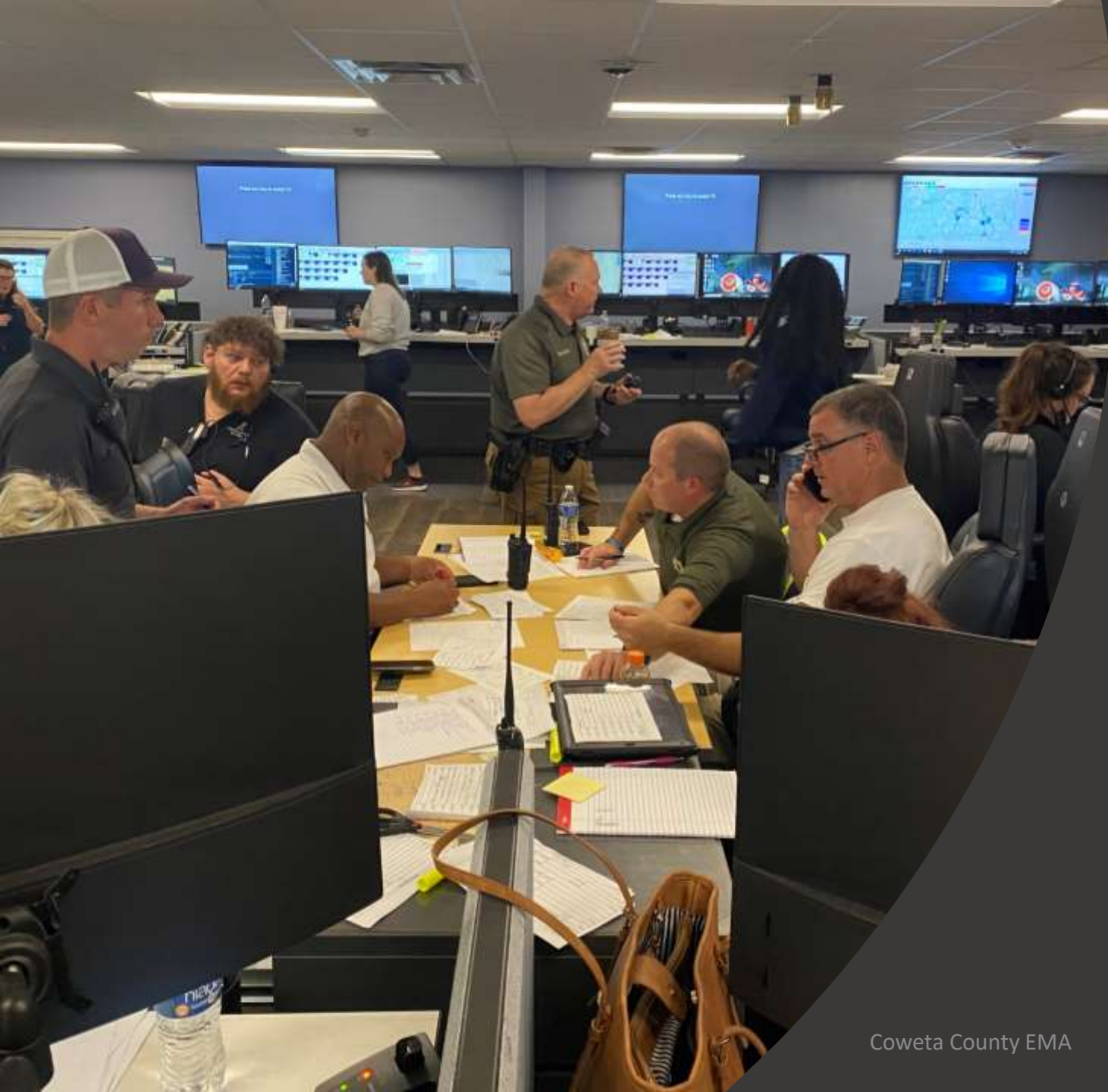
Midnight – 7am

- 895 emergency calls received
- 68 reports of entrapment
- 300 homes were searched by
 - Coweta Fire Rescue / Sheriff's Office
 - Newnan Fire Department / Police Department
 - Georgia Search and Rescue (GSAR)
 - Department of Natural Resources (DNR)
 - Georgia Forestry Commission
 - Numerous volunteers

2021 average daily calls – 180 calls

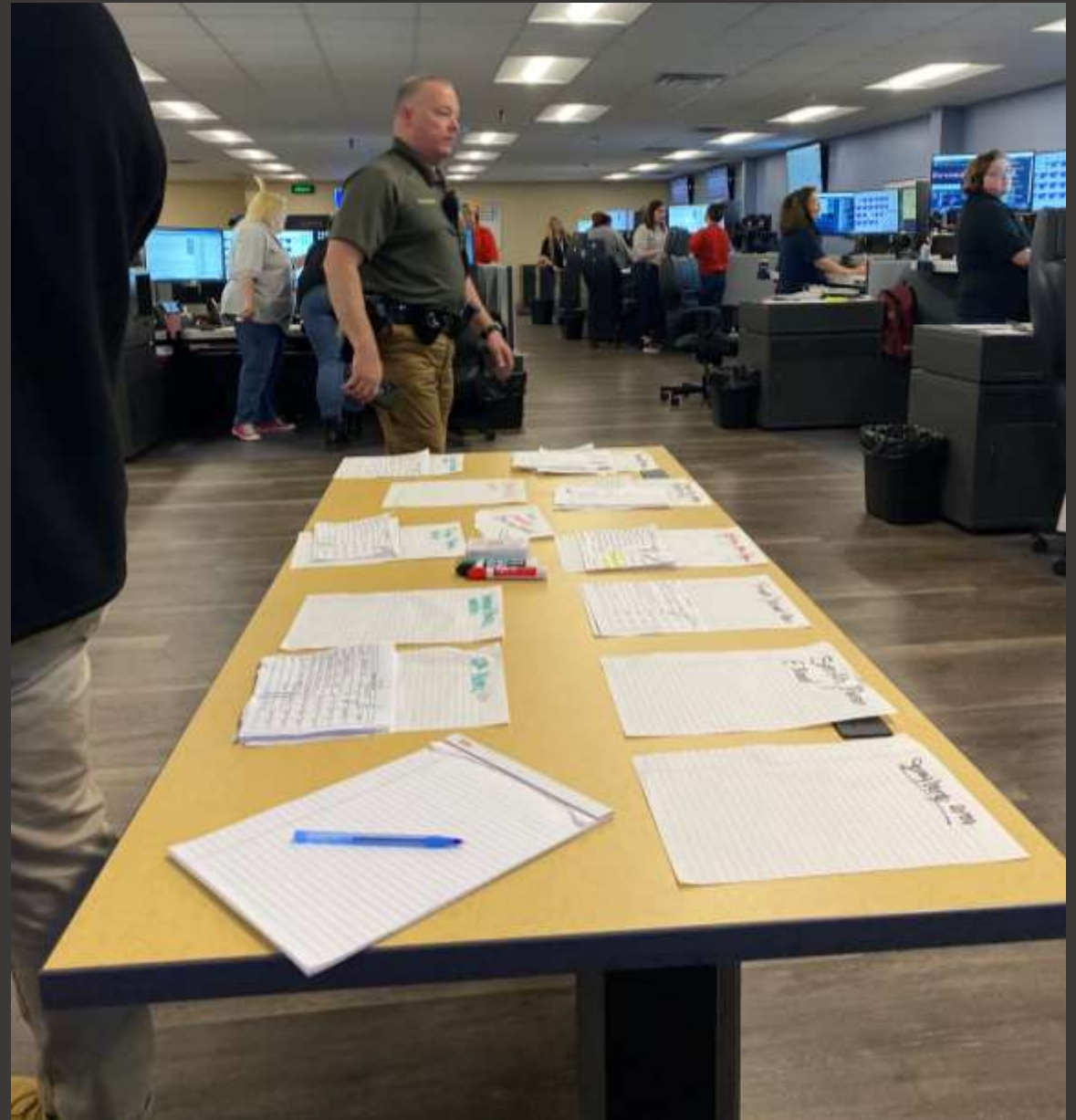
Initial Response





FireCOM

- Used to triage and dispatch calls.
- Dispatchers can not triage calls or change SOPs.
- Fire supervisory staff know the apparatus, personnel, and unit capabilities.



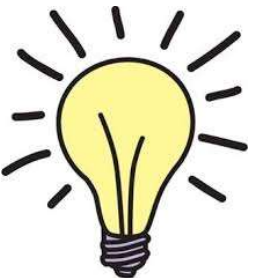


Incident Management Team



Lessons Learned for Impact and Initial Response

- Have printed maps in your EOC.
- Determine now how monetary donations will be collected.
- Have multiple staging areas identified.
- Determine check in and accountability for EOC.
- Develop a training scenario where your staff is overwhelmed and resources are exhausted.
- Identify potential ICS General Staffing now
- Have printed copies of all plans LEOP, Debris Removal, Etc.



Joint Information Center



Damage Assessments

- GEMA and Local Damage Assessment Teams started on 3/27/21 – 3/30/21
- Coweta County EMA requested Joint PDAs with FEMA on 3/30/21.

Affected:	1166
Minor:	402
Major:	124
Destroyed:	73
 Total:	 1765

6

PRELIMINARY DAMAGE ASSESSMENT FIELD SHEET

CITY Newnan COUNTY Coweta STATE OF GEORGIA DATE 3/27/21

TYPE OF DAMAGE: ☐ FLOOD ☐ SEVERE STORM ☒ TORNADO ☐ HURRICANE ☐ EARTHQUAKE
☐ MUDSLIDE ☐ FIRE ☐ ICE STORM ☐ TYPHOON ☐ OTHER

ASSESSMENT TEAM MEMBERS: _____ of _____

ADDRESS	AFFECTED HABITABLE				MINOR				MAJOR				DESTROYED				INACCESSIBLE	WATER DEPTH	Total Insurance NO's
	SF	MF	MH	NO	SF	MF	MH	NO	SF	MF	MH	NO	SF	MF	MH	NO			
23 SW																			
21 SW																			
64 2nd																			
68																			
70																			
11 6th																			
6 6th																			
10 6th																			
14 6th																			
12 Waverly Cir																			
14 "																			
18 "																			
2 Linden																			
4 Linden																			
6 "																			
4 Alpine																			
8 "																			
10 "																			
12 "																			
20 "																			
30 Alpine																			
TOTALS	21	5			1					12			73						

SF - Single Family MF - Multi Family MH - Mobile Home

7



Initial Resources Requested

IMT Team

Generators

Chainsaw Teams

Response Teams

GSAR, DNR, Mutual Aid

Drone Teams

Non-profit Organization Committee

Lessons Learned with a JIC and Damage Assessments

Joint Information Center

- Centralized location close but not too close to your EOC or HQ
- Unified message on response efforts.
- Set messaging tone and frequency at initial interview.
- Consider social media platforms.

Damage Assessments

- Start soon as it is safe to do so.
- Have VEST and Credentials for personnel.
- Marked County vehicles may also be needed.
- Potential personnel for LDATs.
 - County Assessor's Office
 - School System Bus Drivers
 - CERT

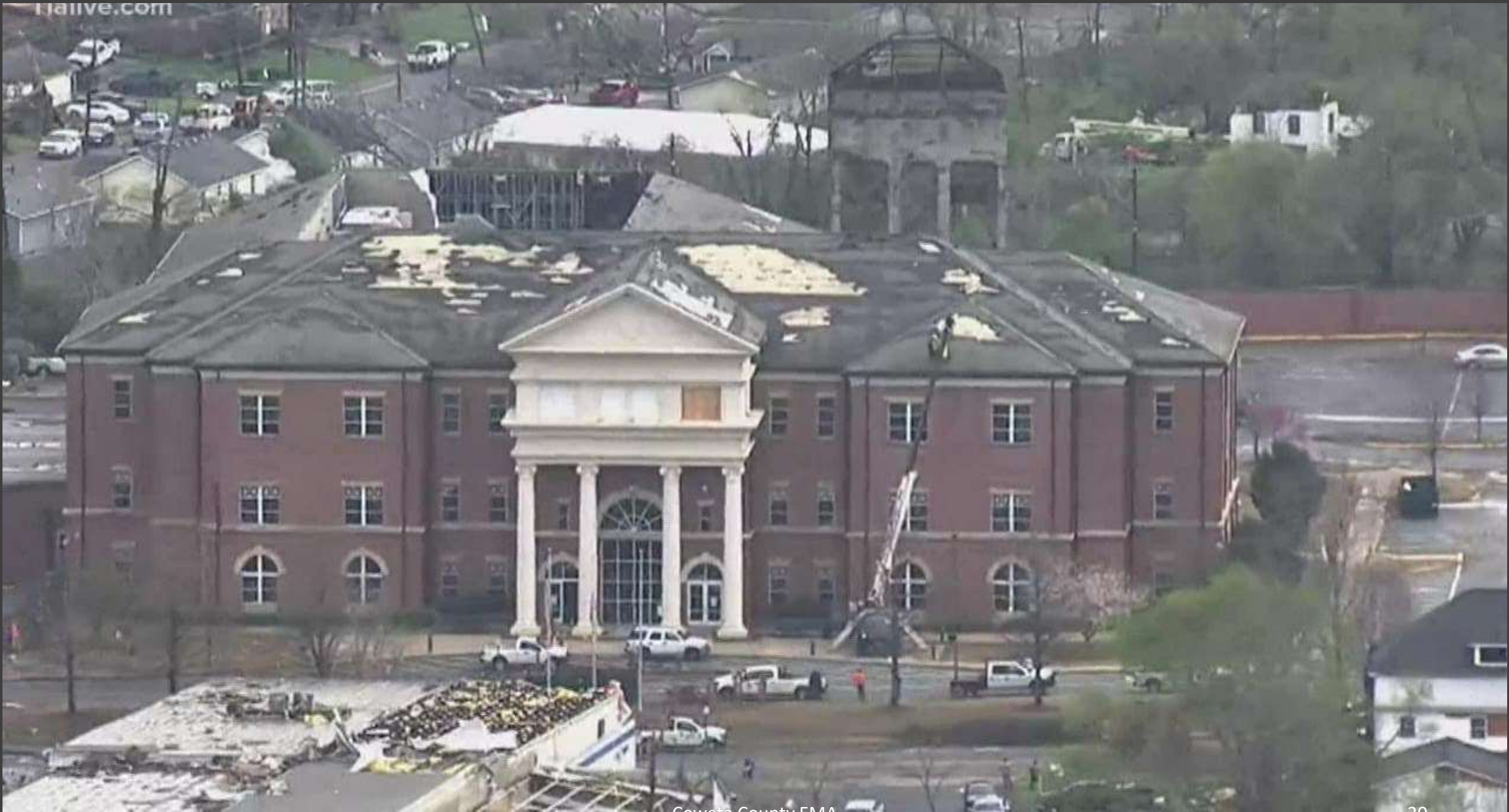




Governor Kemp visited Coweta County, GA on 3/27/2021.



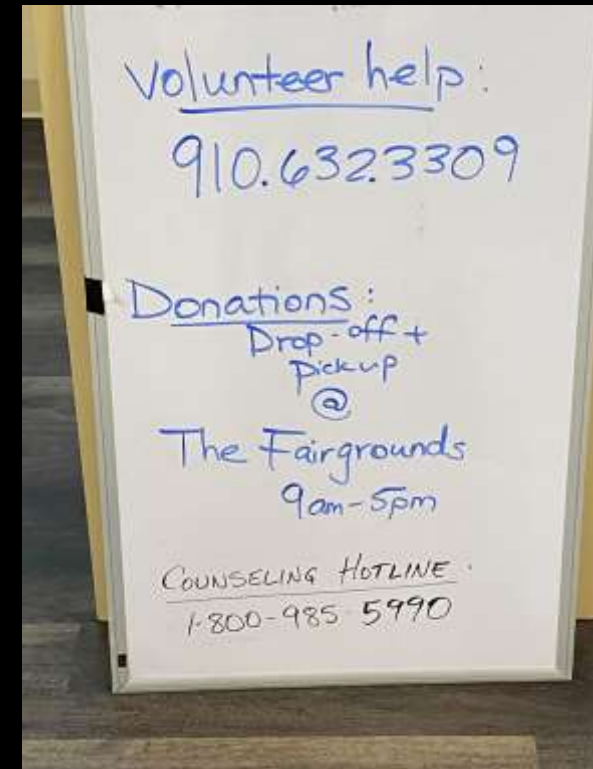








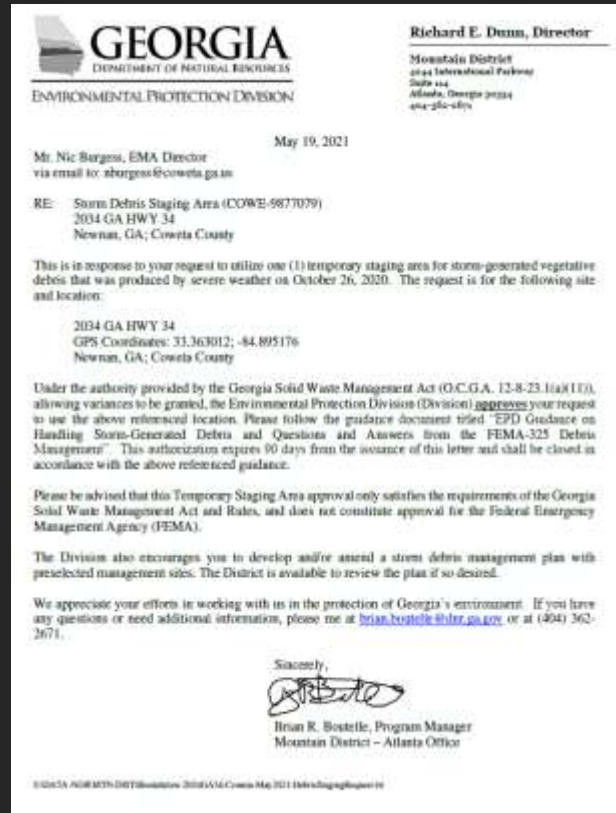
Tornado Call Center



Debris Removal

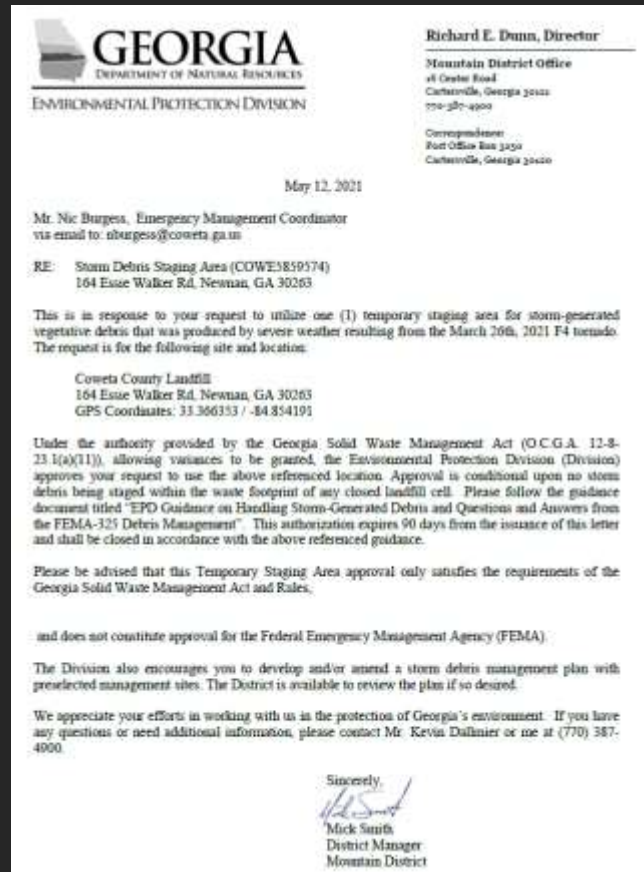


Newnan Utilities Debris Staging Area



Coweta County Landfill Debris Staging Area

3/27/21-4/22/21 5,037 loads hauled by GDOT



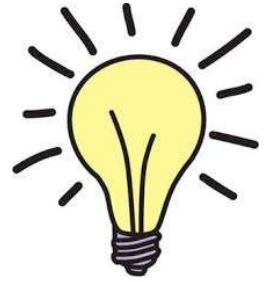


C&D Landfill





Lessons Learned with VIP visits, Call Center, Debris Removal



VIP Visits

- Exact route predetermined
- Transportation/Security
- Predetermine POCs for tours/interviews

Tornado Call Center

- One designated phone number that rings to 3 or more phones.
- Make well known the call center hours.
- Have information packets ready for staffing with crucial numbers and resources for victims.

Debris Removal

- Coordinates for Staging Area Debris chippings.
- Pick up End date made public with reminders.
- Burn Extensions with DNR.

Newnan High School











Volunteer Management











Be specific during job assignments

Volunteer Hours

TOTAL HOURS WORKED
on 4/1/2021, 4/2/2021
and 4/17/2021.

5226.30 Hours





Donation Management

Donation Intake



Coweta County EMA





Donation Outtake



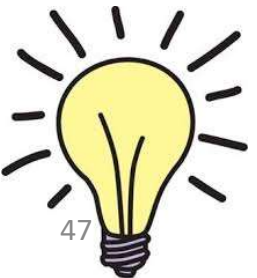
Lessons Learned with Volunteer and Donation Management

Volunteer Management

- Streamline registration with a QR code or online spreadsheet.
- Off duty Fire/Police make great Field Coordinators.
- Don't set specific times – just periods.
- Plan for injuries and special trips.
- School Counselors on return.

Donation Management

- Sort by weight.
- Require proof of address.
- No used clothes from the start.
- Find connections with forklift, pallet jacks, boxes, and pallets
 - Gaylord boxes are the best.
- Cross train forklift drivers.



Long Term Recovery





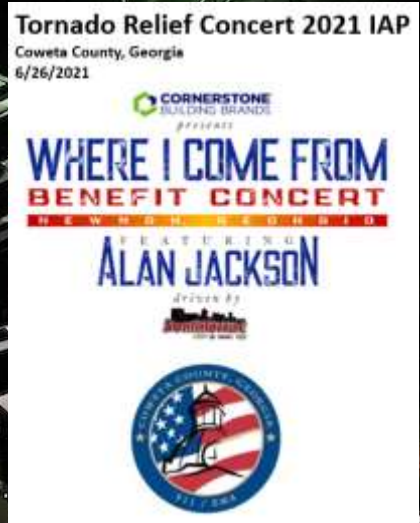
900 x 650



2,500 x 1,663



Alan Jackson Tornado Relief Concert











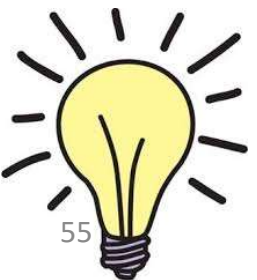
Lessons Learned with Recovery and Relief Concerts

Long Term Recovery

- Develop a NPO Committee now.
- Recovery Coordinator appointment.
- Promote success stories from survivors.

Relief Concerts

- Zone the area for Public Safety.
- Parking and Shuttling plans
- Bathroom locations
- Multiple points of egress/ingress
- Radio earpieces for all Public Safety.



Thank you



Michael Terrell GA-CEM
Director of 911/EMA
mterrell@coweta.ga.us
770-254-5809
Coweta County, GA



Nic Burgess CEM®
EMA Coordinator
nburgess@coweta.ga.us
770-254-5809
Coweta County, GA

