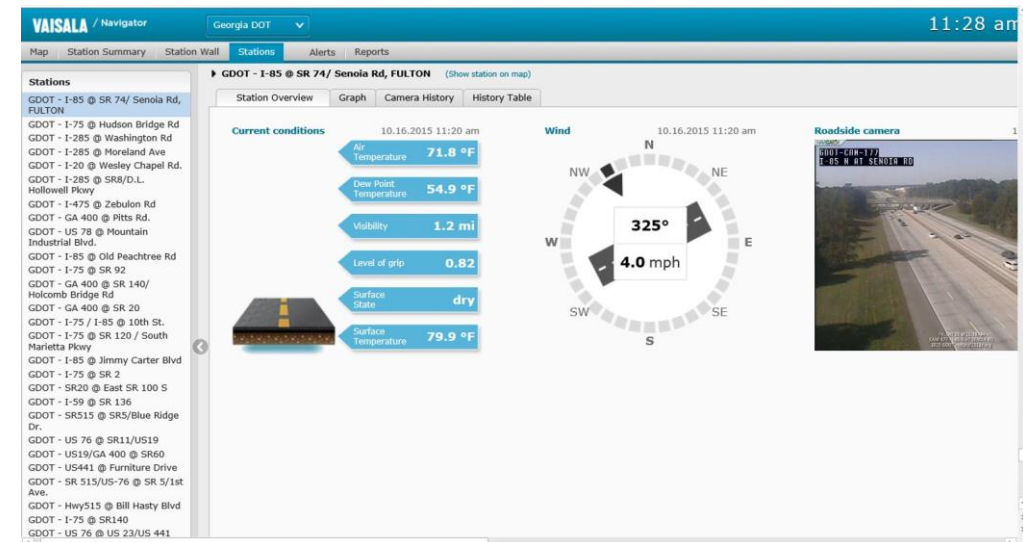
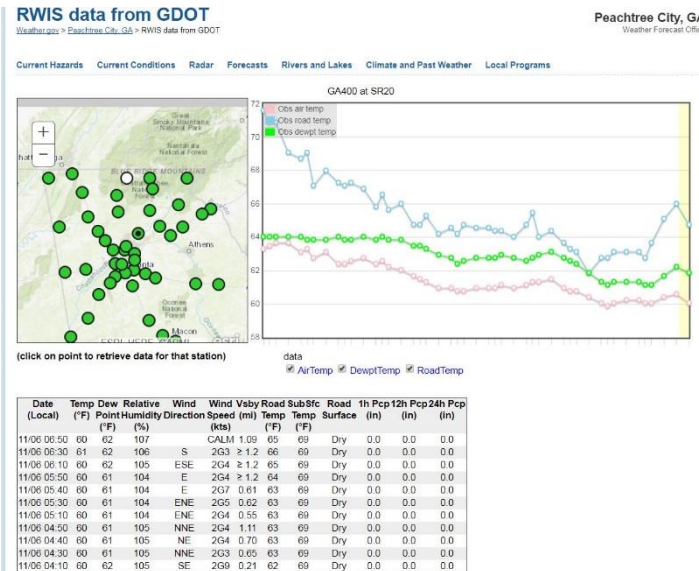
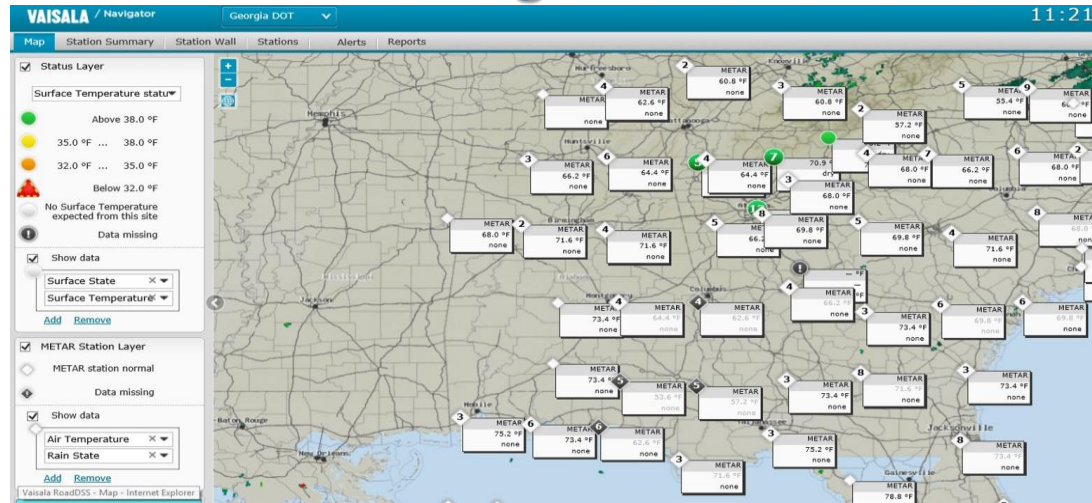


GDOT proactive planning starts with great partnerships.... such as NWS, GEMA's meteorologist, and private partners such as Vaisala are critical to GDOT's mission and operational success during inclement weather events!

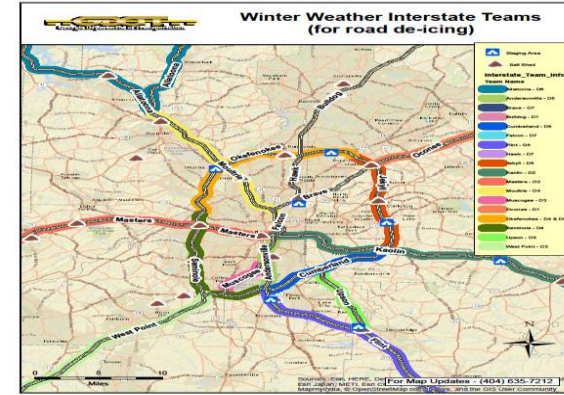
- 55 RWIS stations delivering “wake up calls” daily across the state with critical weather data.
- Data includes surface temperature which is critical to GDOT during winter operations
- **Weather Impact Briefings, Type of Precipitation, Impact Potential, Timeline & Duration** are very important information for GDOT decision making.
- Enhanced Brine Operations



Metro Winter Operations:

- **18 Salt & Plow Teams** responding from districts statewide to Metro Atlanta
- **31 – 5,000 Gal Brine Tankers** – statewide.
- **Special Response Teams**
- **15 Multi-Agency Traffic Strike Teams**

We leverage the best of Intermedix (WebEOC) to manage incidents, notifications, daily operations and real-time data to the field.



Georgia Transportation Emergency Management
Incident: Daily Operations - 2015 Apr-Jun

Buttons: Create Contact, View Contacts, Create Incident, View RSS Feeds

Filters: Show District Totals, Assigned to District (District 2), Assigned to Area (All), Assigned to Position (All), Status (All)

Search: [] Search Clear Search

Incident District	County	GDOT Incident Name	State Route Number	Interstate	Beginning MP	Ending MP	Direction	Affected Lane Description	Initial Conditions	Initial Status	Current Status	Current Conditions	Number of Lanes Passable	Bridge Closed	Assigned To	Last Updated	Details	Update
009	Baldwin	Test Map	24		17.60	17.60	NB	3 (Next Right lane)	Accident/Crash	Closed/Blocked	Passable	Accident/Crash	All	(Select)	GDOT-AEOC-D2A6 Foremen	08/18/2015 10:34:55	Select	Update
009	Baldwin	Test Map	002400	00016	16.70	16.70	Increasing (NB/EB)	1 (Inner/Left-most lane)	Accident/Crash	Closed/Blocked	Closed/Blocked	Accident/Crash	All	(Select)	GDOT-AEOC-D2A6 Foremen	08/18/2015 10:33:20	Select	Update
District Two - Tennille	Baldwin	Map	004900		0.00	0.00	Both	9 (Outer/Right-most lane)	Accident/Crash	Closed/Blocked	Open	Accident/Crash	All	(Select)	GDOT-AEOC-D2A6 Foremen	07/10/2015 20:21:53	Select	Update

ENHANCEMENTS MADE BY GDOT

- Investing in multi-purpose equipment
- Adding additional RWIS (weather) stations
- Increased brine production capabilities
 - ❖ **37,000 gal/per hour**
- Increased brine storage capabilities
 - ❖ **711,000 gallons of storage**
- Additional brine tankers
 - ❖ **31 – 5,000 Gal Brine Tankers – statewide.**
- Enhanced technology – WebEOC Applications, GIS Services, Resource tracking capabilities
- Continued training, education, and work with partners; **NWS, GEMA, VAISALA**

