



# Drought Information Statement for North and Central Georgia

Valid November 30, 2023

Issued By: NWS Atlanta / Peachtree City, GA

Contact Information: [sr-ffc.webmaster@noaa.gov](mailto:sr-ffc.webmaster@noaa.gov)

- This product will be updated December 14, 2023 or sooner if drought conditions change significantly.
- Please see all currently available products at <https://drought.gov/drought-information-statements>.
- Please visit <https://www.weather.gov/ffc/DroughtInformationStatement> for previous statements.



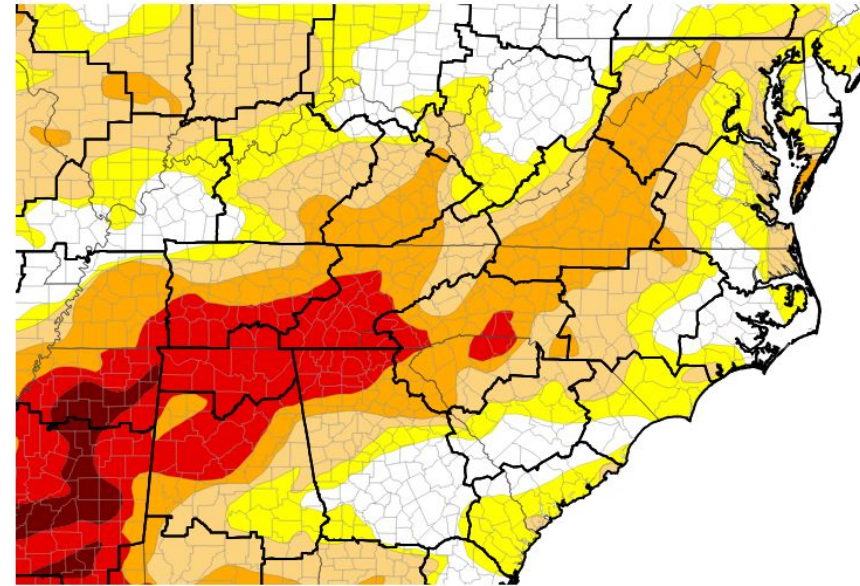


# U.S. Drought Monitor

Link to the [latest U.S. Drought Monitor](#) for Georgia

- Short-Term Exceptional Drought (D4) has improved with recent rainfall over the last two weeks.
- Drought intensity and Extent for north and central GA Counties listed under most significant drought category.
  - **D4 (Exceptional Drought):** None
  - **D3 (Extreme Drought):** Dade, Walker, Catoosa, Whitfield, Murray, Fannin, Gilmer, Union, Towns, Chattooga, Floyd, Gordon, Pickens, Dawson, Lumpkin, White, Bartow, and Cherokee counties
  - **D2 (Severe Drought):** Polk, Paulding, Cobb, Fulton, Forsyth, Hall, Banks, Gwinnett, Barrow, Jackson, Madison, Oconee, Clarke, Oglethorpe and Wilkes counties
  - **D1 (Moderate Drought):** Haralson, Carroll, Douglas, DeKalb, Walton, Heard, Coweta, Fayette, Clayton, Henry, Rockdale, Newton, Troup, Meriwether, Spalding and Sumter counties
  - **D0: (Abnormally Dry):** Harris, Pike, Lamar, Butts, Jasper, Greene, Taliaferro, Chattahoochee, Marion, Schley, Stewart, Webster, Crisp, Toombs and Emanuel counties

U.S. Drought Monitor



U.S. Drought Monitor



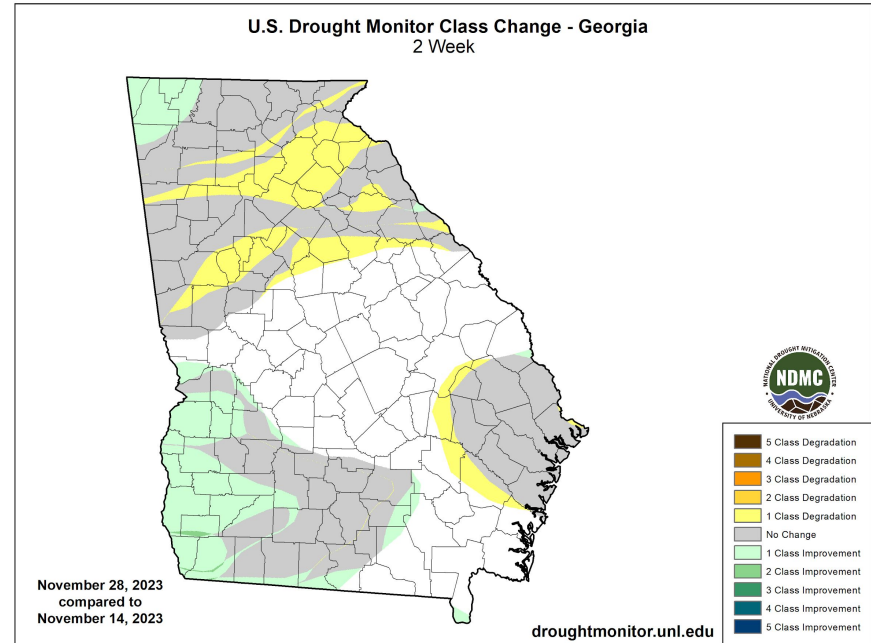


# Recent Change in Drought Intensity

Link to the latest [2-week change map](#) for Georgia

## Two-Week Drought Monitor Class Change for North and Central Georgia

- **Drought Worsened**
  - Over north Georgia, generally along I-20 and northward, conditions worsened by one category
  - Over east central Georgia, where D0 Abnormally Dry conditions were expanded into neighboring counties
- **No Change**
  - North of I-85 and I-20 corridors had large areas of persistent (neither improving or degrading) drought conditions in the last two weeks.
- **Drought Improved**
  - Over far northwest Georgia where D4 Excessive Drought improved to D3 Extreme Drought
  - In west central Georgia, near Columbus, where conditions improved to D0 Abnormally Dry.







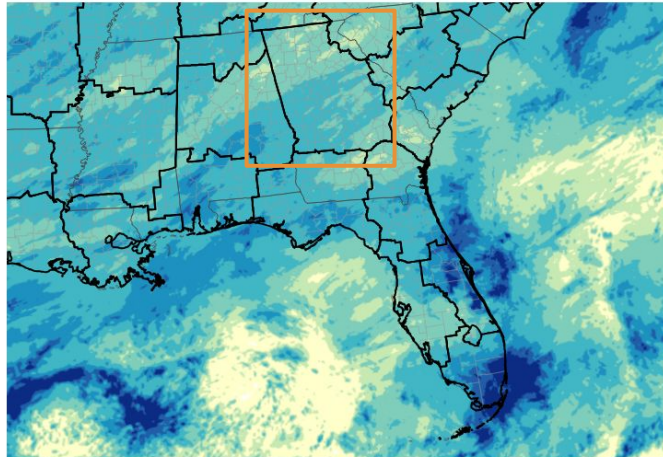
# Precipitation - Past 30 Days

In the last 30 days, over north and central Georgia, below normal precipitation has occurred over the entire area. North of a line from Carrollton, to Decatur, to Lexington, rainfall amounts have been between 1 and 2 inches, or 50% of normal or less. Similar amounts also occurred in portions of east central Georgia, near McRae and Vidalia.

## 30-day rainfall totals (compared to normal):

- Rome (RMG): 1.57" (38%)
- Atlanta (ATL): 2.01" (50%)
- Gainesville (GVL): 0.92" (22%)
- Athens (AHN): 1.60" (43%)
- Peachtree-DeKalb (PDK): 1.16" (28%)

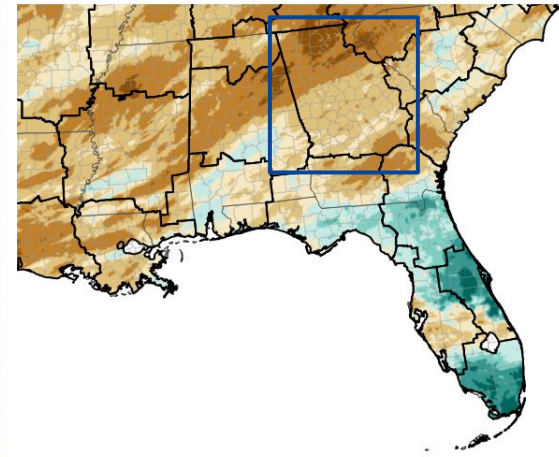
### 30-Day Precipitation Accumulations (Inches)



Inches of Precipitation



### 30-Day Percent of Normal Precipitation



Percent of Normal Precipitation (%)

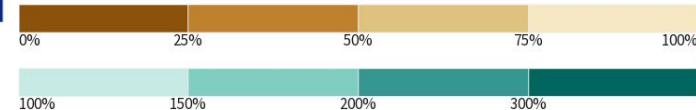


Image Captions:  
Left - Precipitation Amount for Georgia  
Right - Percent of Normal Precipitation for Georgia  
Data Courtesy High Plains Regional Climate Center.  
Data over the past 30 days ending November 29, 2023



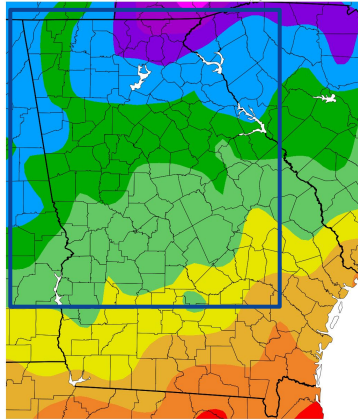




# Temperatures - Past 30 Days

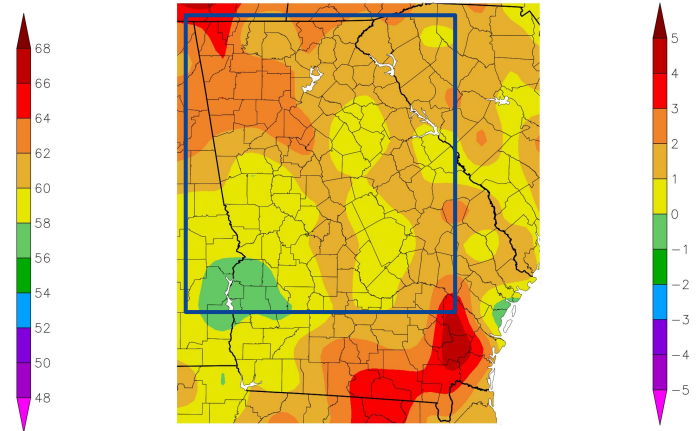
- Average temperatures for the last 30 days

Temperature (F)  
10/31/2023 - 11/29/2023



Generated 11/30/2023 at HPRCC using provisional data.

Departure from Normal Temperature (F)  
10/31/2023 - 11/29/2023



NOAA Regional Climate Centers 2023 at HPRCC using provisional data.

NOAA Regional Climate Centers

Image Captions:  
Left - Average Temperature  
Right - Departure from Normal Temperature  
Data Courtesy High Plains Regional Climate Center.  
Data over the past 30 days ending Month, DD, YYYY





# Summary of Impacts

Links: See/submit [Condition Monitoring Observer Reports \(CMOR\)](#) and view the [Drought Impacts Reporter](#)

## Hydrologic Impacts

- Streamflows remain below to much below normal across most basins in the region, and have worsened over the past two weeks, especially over northeast Georgia in the Chattahoochee and Savannah headwaters that are now considered 'low'. Reservoirs continued to be low for this time of year, with Lake Lanier currently down about eight feet. See next slide for more details.

## Agricultural Impacts

- Please see the latest [Georgia Crop Progress and Condition Report](#).
- Good rainfall amounts in the last week helped replenish and improve water resources and soil moisture over the state. Farmers continue to report fair pasture conditions, requiring supplemental feeding of livestock, but that some fields saw a bit of a green up with the recent rain. Even with the rain, some farmers are concerned about seed germination with cool temperatures and persistently low average soil moistures.

## Fire Hazard Impacts

- Wildfire activity has subsided somewhat, but several counties and park areas continue their burn bans. See slide 8 for more details.

## Other Impacts

- There are no known impacts at this time

## Mitigation Actions

- Please refer to your municipality and/or water provider for mitigation information.





# Hydrologic Conditions and Impacts

## Main Takeaways

- Even with a more unsettled and active weather pattern, the below normal rainfall amounts have still produced a degradation in streamflows. Much below normal 7-day streamflow conditions are occurring in the upper Coosa and Chattahoochee River Basins, and low conditions are occurring in the headwater of the Savannah River. Below normal conditions are occurring in the Coosa, Tennessee, Chattahoochee, Tallapoosa and Savannah River basins.
- While the Flint, Ocmulgee, Oconee, Ogeechee, and Altamaha River basins fall under 'normal' streamflow conditions, limited rainfall has allowed these to drop into the lower end of 'normal'.
- Lake and Reservoir levels remain below normal, particularly those over north Georgia. Many lake levels (Lanier, Blue Ridge, Nottely, Allatoona, Hartwell, West Point) have fallen 5-10 feet since September 1.

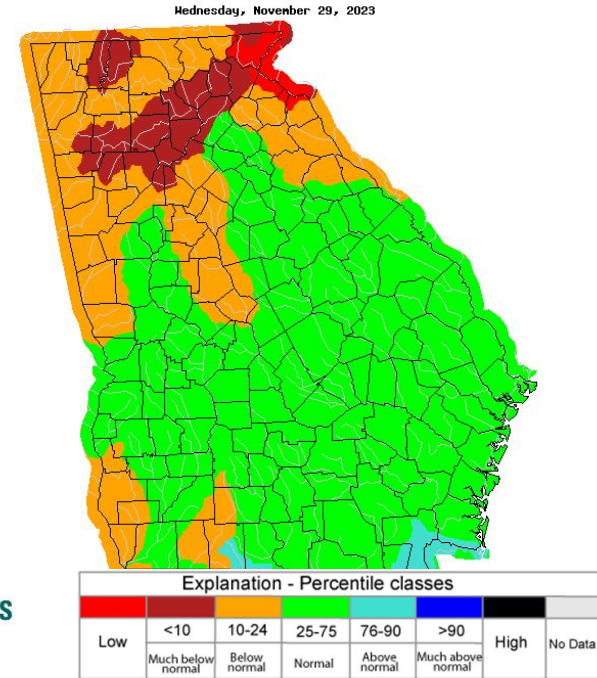


Image Caption: USGS 7 day average streamflow HUC map valid November 29, 2023.







# Agricultural Impacts

- The Soil Moisture Ranking Percentile (below) shows dry to near-normal rankings as of November 29, 2023.
- Of the nine crop divisions (right), northeast Georgia Crop Moisture Index is Abnormally Dry and the remainder of the state is near normal – an improvement over the last two weeks. This index focuses on the shallow soil profile and responds more quickly to recent rainfall.

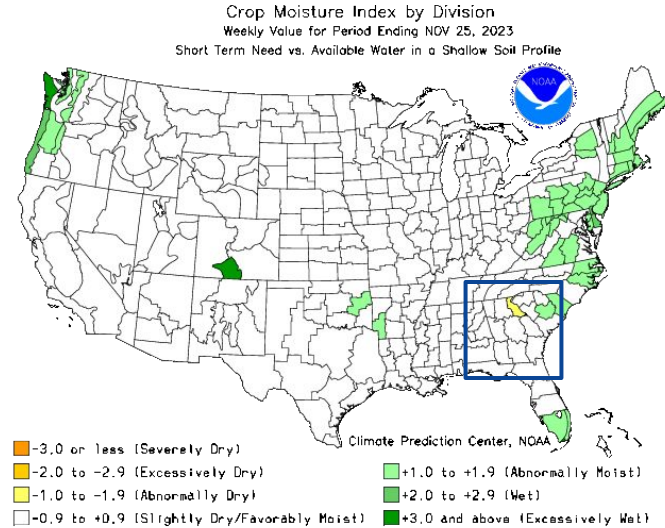
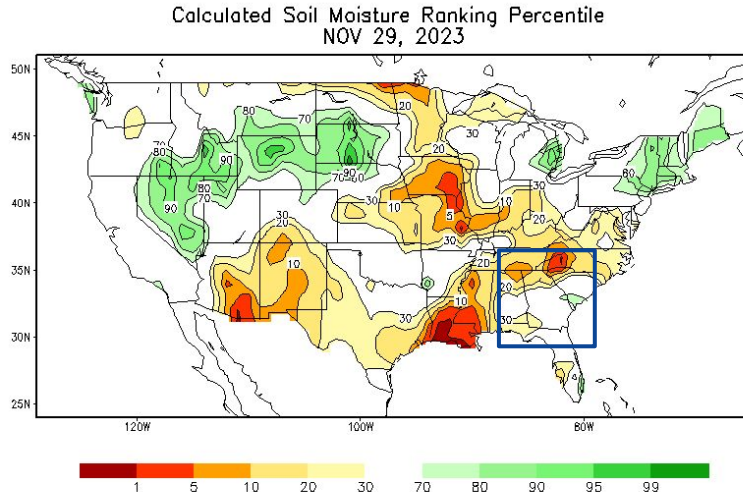


Image Captions:

Left: CPC Calculated [Soil Moisture Ranking Percentile](#) (data 1932-2000) valid November 29, 2023

Right: [Crop Moisture Index by Division](#). Weekly value for period ending November 25, 2023





# Fire Hazard Impacts

Link to [Wildfire Potential Outlooks from the National Interagency Coordination Center](#).

- [Keetch Byram Drought Index values](#) have remained above 400 through November, although the most recent map (right) shows improvement.
- Even with dry conditions, there is a normal (typical) wildland fire potential for December (far right).
- The NWS Atlanta office continues enhanced collaborative efforts with Fire Weather partners and has completed a typical number of spot forecasts in the last two weeks. Many north Georgia localities continue burn bans and increased education outreach efforts.

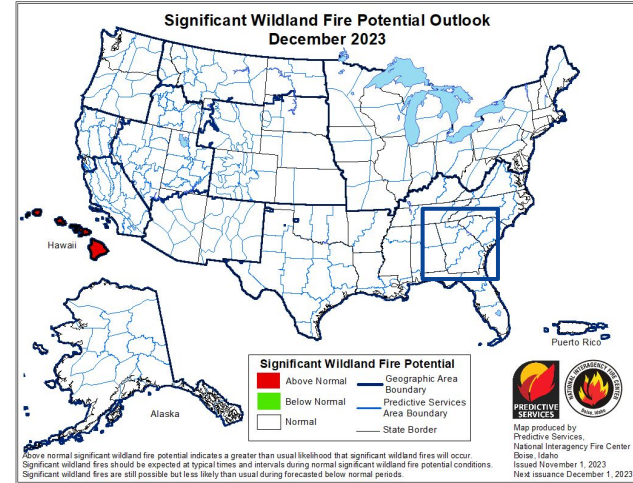
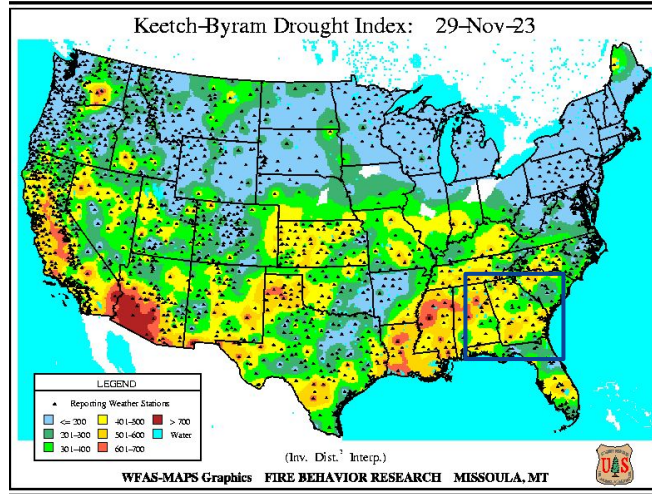


Image Captions:

Above: [Significant Wildland Fire Potential Monthly Outlook](#) for December 2023  
 Left: [Keetch Byram Drought Index](#) for November 29, 2023



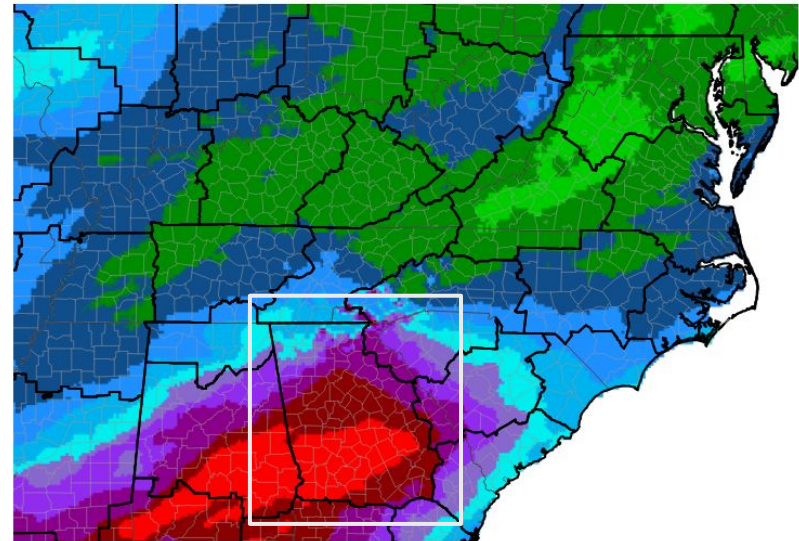


# Seven Day Precipitation Forecast

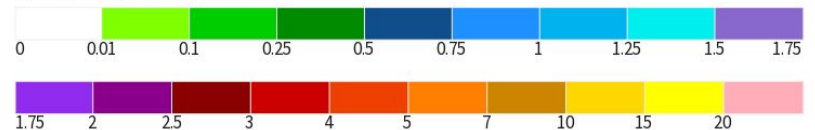
The 7-day outlook (through 7am Thu, Dec 7):

- A shift in the weather pattern is expected to bring wet conditions through the weekend.
  - Over central Georgia, 2.5 to 4 inches of rain are possible.
  - Over north Georgia, 1 to 3 inches are possible.
- During this time of year, normal rainfall for a 7-day period would range from 0.50 to 1.5 inches.
- This rainfall should be sufficient for drought improvement statewide.

7-Day Quantitative Precipitation Forecast



Predicted Inches of Precipitation



Source(s): National Weather Service Weather Prediction Center; image courtesy of Drought.gov

Data Valid: 11/30/23







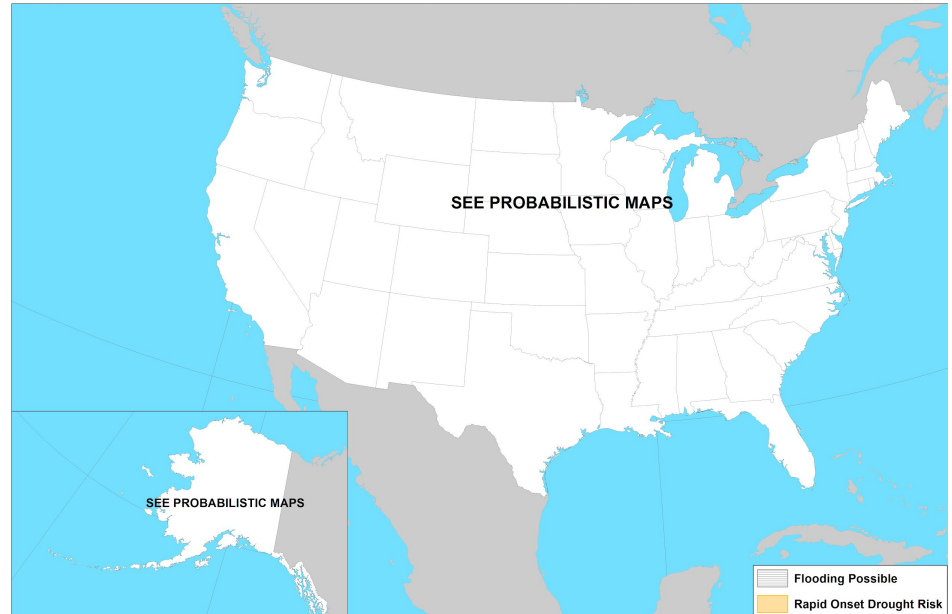
# Rapid Onset Drought Outlook

Links to the latest Climate Prediction Center 8 to 14 day [Temperature Outlook](#) and [Precipitation Outlook](#).

- No rapid onset drought is expected for any area in the Southeast U.S.
- For the next 8 to 14 days, above normal temperatures and above normal precipitation are expected for Georgia.



Day 8-14 U.S. Hazards Outlook  
Valid: 12/07/2023-12/13/2023



Climate Prediction Center  
Made: 11/29/2023 3PM EST

Follow us:   
[www.cpc.ncep.noaa.gov](http://www.cpc.ncep.noaa.gov)

Image Caption:

[Days 8 to 14 U.S. Hazards Outlook](#)

Valid October 27-November 2, 2023





# Long-Range Outlooks

The latest monthly and seasonal outlooks can be found on the [CPC homepage](#)

## For December:

- Above normal temperatures are expected
- Above normal rainfall is expected

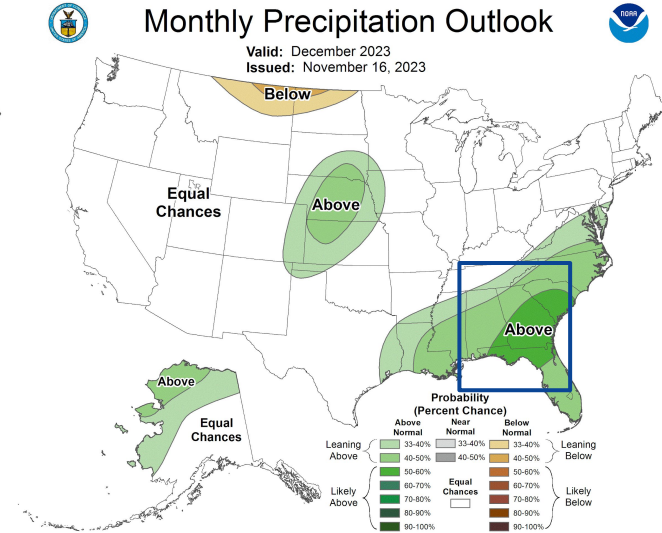
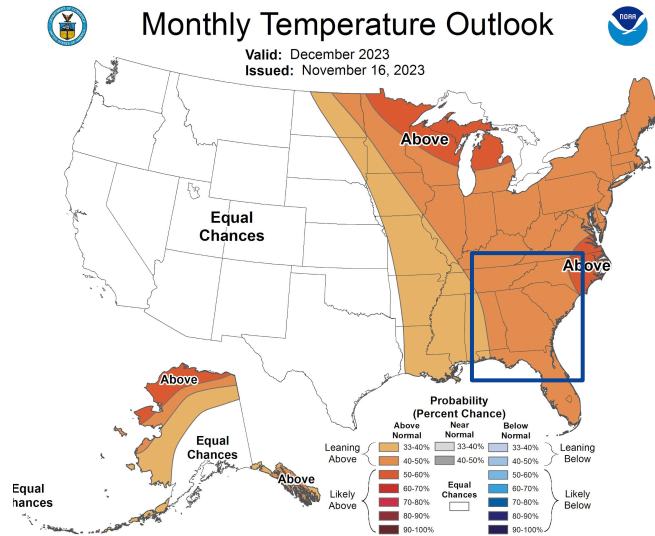


Image Captions:

Left - [Climate Prediction Center Monthly Temperature Outlook](#),

Right - [Climate Prediction Center Monthly Precipitation Outlook](#).

Valid December 2023, issued November 16, 2023



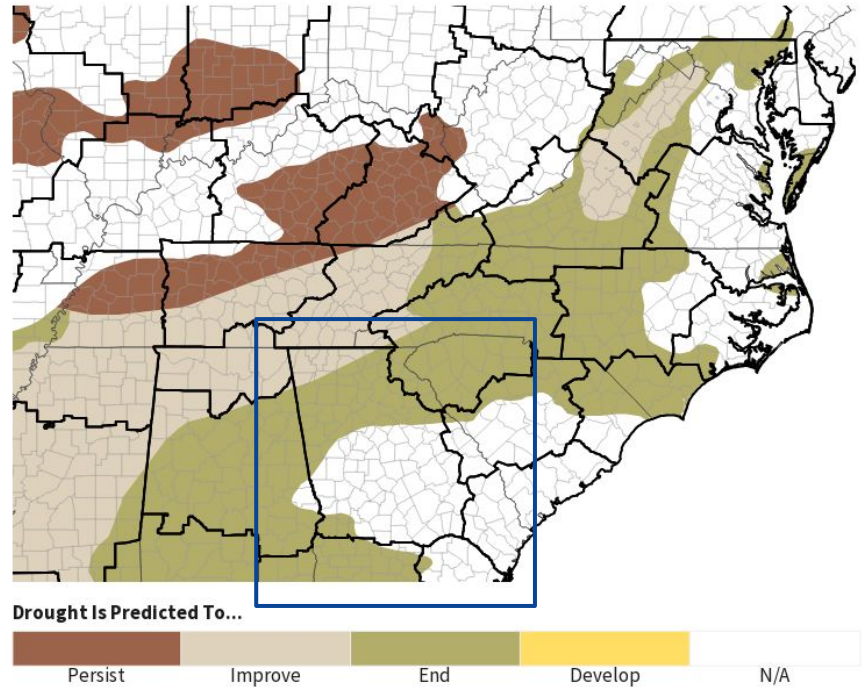


# Drought Outlook

The latest monthly and seasonal outlooks can be found on the [CPC homepage](#)

- Drought is expected to end over much of the state through the winter months.
- In this same time, drought will improve over far north and northwest Georgia, although it may not be entirely eliminated.

## Seasonal (3-Month) Drought Outlook



Links to the latest:

[Climate Prediction Center Monthly Drought Outlook](#)

[Climate Prediction Center Seasonal Drought Outlook](#)

