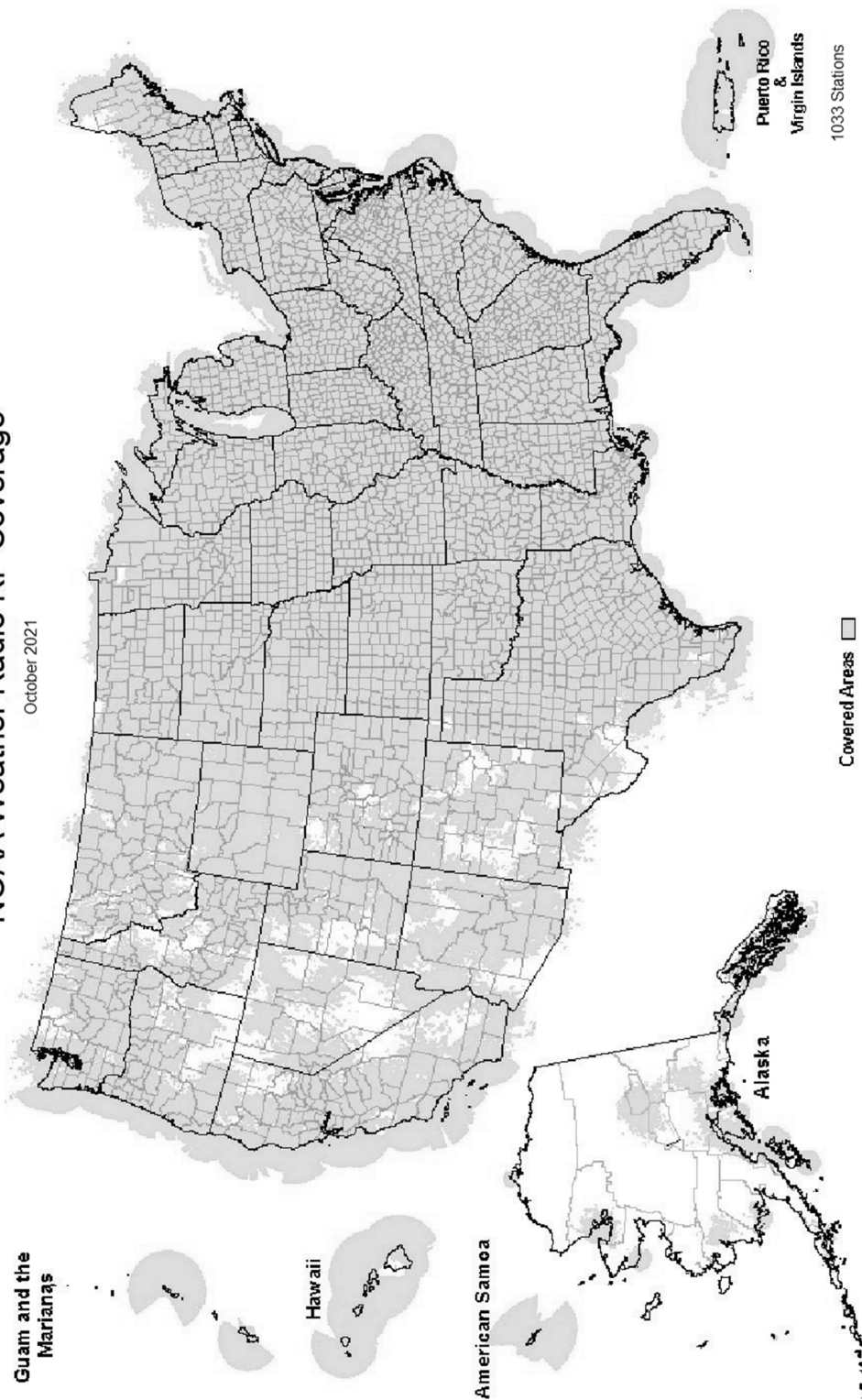
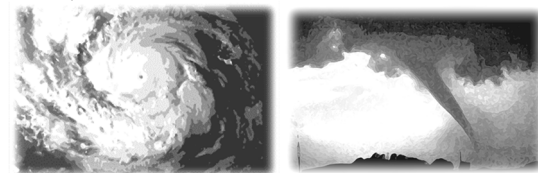


NOAA Weather Radio RF Coverage

October 2021



NOAA/PA 94062
Rev October 2021



The Voice of NOAA's National Weather Service

< Over 1000 Transmitters >

Broadcasting Continuous Weather Information on the Following Frequencies:

- 162.400 MHz
- 162.425 MHz
- 162.450 MHz
- 162.475 MHz
- 162.500 MHz
- 162.525 MHz
- 162.550 MHz

U.S. Department of Commerce
National Oceanic and Atmospheric Administration
National Weather Service

<http://www.weather.gov/nwr/>

NOAA WEATHER RADIO

The Voice of NOAA's National Weather Service

<http://www.weather.gov/nwr>

NOAA Weather Radio is a service of the National Oceanic and Atmospheric Administration (NOAA) of the U.S. Department of Commerce. As the "voice of the National Weather Service," it provides continuous broadcasts (24 hours a day) of the latest weather information from local National Weather Service offices. Weather messages are repeated every 4 to 6 minutes and are routinely updated every 1 to 6 hours or more frequently in rapidly changing local weather or if a nearby natural hazardous or manmade condition exists.



The regular broadcasts are specifically tailored to weather information needs of the people within the service area of the transmitter. For example, in addition to general weather information, stations in coastal areas provide information of interest to mariners. Other specialized information, such as hydrological forecasts and other climate data may be broadcast.

During severe weather, National Weather Service forecasters can interrupt the routine weather broadcasts and insert special warning messages concerning imminent threats to life and property. The forecaster can also add special signals to warnings that trigger "alerting" features of specially equipped receivers. In the simplest case, this signal activates audible or visual alarms, indicating that an emergency condition exists within the broadcast areas of the station being monitored, and alerts the listener to turn up the volume and stay tuned for more information. More sophisticated receivers are automatically turned on and set to an audible volume when an alert is received.

In the most sophisticated alerting system, NOAA Weather Radio Specific Area Message Encoding (SAME), digital coding is employed to activate only those special receivers programmed for specific emergency conditions in specific area, typically a county. SAME can activate specially equipped radio and cable television receivers and provide a short text message that identifies the location and type of emergency. SAME is the primary activator for the FCC Emergency Alert System (EAS).

To program NWR SAME receivers with the proper county(s) and marine area(s) of choice, you need to know the 6-digit SAME code number(s) for that county(s). Once you have your code number(s), follow the manufacturer's directions for programming your NWR SAME receiver. You can obtain your SAME code numbers by dialing:

888-NWR-SAME (888-697-7263) – Voice & TTY/TTD Accessible

Under a January 1975 White House policy statement, NOAA Weather Radio was designated the sole Government-operated radio system to provide direct warning into private homes for both

Williamsport.....	162.400
PUERTO RICO	
Maricao	162.550
San Juan	162.400
RHODE ISLAND	
Providence	162.400
SOUTH CAROLINA	
Aiken	162.450
Aynor	162.400
Barnwell	162.500
Beaufort.....	162.450
Charleston	162.550
Cheraw	162.450
Columbia	162.400
Cross.....	162.475
Florence	162.550
Georgetown.....	162.500
Greenville	162.550
Kirksey	162.425
Orangeburg	162.525
Rock Hill	162.425
Sumter.....	162.425
SOUTH DAKOTA	
Aberdeen.....	162.475
Arlington	162.525
Faith	162.475
Firesteel	162.425
Hot Springs	162.425
Lead	162.525
Lowry.....	162.500
Mitchell	162.450
Philip	162.450
Pickstown	162.425
Pierre.....	162.400
Porcupine	162.500
Rapid City.....	162.550
Reliance	162.525
Sioux Falls	162.400
South Shore	162.425
Wessington	162.550
White River.....	162.550
TENNESSEE	
Bristol	162.550
Centerville	162.450
Chattanooga.....	162.550
Clarksville	162.500
Clifton	162.500
Cookeville.....	162.400
Dyersburg.....	162.500
Hickman	162.500
Jackson	162.550
Knoxville	162.475
La Follette	162.450
Lafayette	162.525
Lawrenceburg.....	162.425
Lobelville	162.525
Memphis	162.475
Nashville.....	162.550
Shelbyville	162.475
Spencer.....	162.450
Vale	162.450
Waverly	162.400
Winchester	162.525
TEXAS	
Abilene	162.400
Alpine	162.550
Amarillo	162.550

Austin	162.400
Bay City.....	162.425
Beaumont.....	162.475
Big Spring.....	162.475
Borger	162.400
Brownsville.....	162.550
Bryan	162.550
Burkeville.....	162.425
Carrizo Springs.....	162.550
Center	162.525
Childress	162.525
Cisco	162.500
Coleman.....	162.475
Corpus Christi	162.550
Corsicana	162.525
Cumby.....	162.500
Dallas	162.400
Del Rio	162.400
D'Hanis.....	162.525
Dickens	162.500
Dilley	162.500
El Paso	162.475
El Paso Spanish	162.550
Fort Worth	162.550
Galveston	162.550
Gilmer	162.425
Gonzales	162.525
Guadalupe Mt Nat'l. Park.....	162.525
Junction.....	162.475
Kerrville	162.450
La Grange	162.500
Laredo	162.550
Llano	162.425
Lubbock.....	162.400
Lufkin	162.550
Marietta	162.525
Miami	162.450
Midland/Odessa	162.400
Milano	162.525
Mineral Wells.....	162.525
Muenster	162.425
New Taiton	162.450
Onalaska	162.500
Ozona	162.500
Palestine	162.450
Paris	162.550
Pecos	162.450
Perryton.....	162.475
Pharr	162.400
Pharr Spanish	162.475
Plainview	162.450
Port O'Connor	162.475
Richland Springs.....	162.525
Richmond	162.475
Rio Grande City.....	162.425
Riviera	162.525
San Angelo.....	162.550
San Antonio.....	162.550
Santa Maria Spanish	162.450
Seguin	162.475
Seminole	162.425
Sherman.....	162.475
Stephenville.....	162.450
Summerfield.....	162.500
Sweetwater	162.425
Texarkana	162.550
Three Rivers.....	162.450
Throckmorton	162.425
Tomball	162.400
Tyler	162.475
Uvalde	162.425
Victoria	162.400
Waco	162.475

Wichita Falls.....	162.475
UTAH	
Bear Lake.....	162.500
Castle Dale	162.500
Coalville/ Park City	162.475
Escalante	162.425
Lake Powell.....	162.550
Logan	162.400
Manti	162.425
Milford/Cedar City	162.400
Moab	162.475
Monticello.....	162.450
Salt Lake City.....	162.550
St. George.....	162.475
Tabiona	162.550
Tooele (South Mountain).....	162.450
Tooele (Vernon Hills) ..	162.525
Vernal	162.400
Wendover.....	162.475
VERMONT	
Burlington.....	162.400
Castleton	162.500
St. Johnsbury	162.425
Windsor.....	162.475
VIRGIN ISLANDS	
St. Thomas.....	162.450
VIRGINIA	
Accomack	162.525
Covesville.....	162.450
Fredericksburg	162.425
Heathsville	162.400
Lynchburg	162.550
Manassas.....	162.550
Norfolk	162.550
Richlands	162.425
Richmond.....	162.475
Roanoke.....	162.475
Sand Mtn.....	162.450
South Boston	162.525
WASHINGTON	
Astoria.....	162.400
Capitol Peak.....	162.475
Cle Elum	162.400
Davis Peak.....	162.525
Dayton	162.525
Forks	162.425
H Street - Blaine Area ..	162.525
Neah Bay	162.550
Okanogan	162.525
Plymouth	162.425
Puget Sound Marine ..	162.425
Randle	162.425
Richland	162.450
Seattle.....	162.550
Spokane	162.400
Wenatchee.....	162.475
Yakima	162.550
WEST VIRGINIA	
Backbone Mountain ..	162.450

Beckley	162.550
Charleston.....	162.400
Clarksburg.....	162.550
Garfield	162.500
Gilbert	162.475
Greggs Knob.....	162.500
Hinton	162.425
Monterville.....	162.525
Moorefield	162.400
Morgantown	162.475
Sutton	162.450
WISCONSIN	
Ashland.....	162.525
Baraboo	162.450
Black River Falls	162.500
Coloma	162.400
Crandon	162.450
Dubuque	162.400
Fond Du Lac	162.500
Green Bay.....	162.550
Gresham	162.500
Janesville	162.425
Ladysmith	162.550
Madison	162.550
Menomonie	162.400
Milwaukee.....	162.400
New London.....	162.525
Park Falls.....	162.500
Prairie Du Chien.....	162.500
Racine.....	162.450
Rhineland.....	162.400
Richland Center	162.475
Sheboygan	162.525
Sister Bay	162.425
Spooner	162.475
Tomah.....	162.525
Wausau.....	162.475
Wausaukee	162.400
Winona	162.425
Withee.....	162.425
WYOMING	
Afton	162.475
Casper	162.400
Cheyenne	162.550
Cody	162.400
Dubois.....	162.450
Elk Plaza	162.425
Evanston.....	162.450
Gillette.....	162.500
Glendo	162.450
Grant Village	162.450
Jackson.....	162.525
Kaycee.....	162.550
Kemmerer	162.525
Lander	162.475
Newcastle	162.475
Pinedale.....	162.500
Rawlins	162.425
Rock Springs.....	162.550
Sheridan	162.475
Thermopolis	162.500
Worland	162.525

The National Weather Service requests your assistance in reporting any outages of NOAA Weather Broadcast Stations.

Please use our Toll Free Number (888) 697-7263 or send an Email to nwroutage@noaa.gov to report the outage.

Cassville	162.500	Mullen	162.425
Clinton	162.500	Norfolk	162.550
Columbia	162.400	North Platte	162.550
Crocker	162.500	Omaha	162.400
Doniphan	162.450	Ord	162.525
El Dorado Springs	162.475	Oshkosh	162.525
Eldon	162.550	Scottsbluff	162.475
Fordland	162.400	Shubert	162.500
Fredericktown	162.500	Sidney	162.500
Gainesville	162.425	Superior	162.525
Hannibal	162.475	Trenton	162.500
Hermitage	162.450	Valentine	162.450
Jamestown	162.425	Yankton	162.500
Joplin	162.550		
Kansas City	162.550		
La Plata	162.525		
Lancaster	162.550		
Maryville	162.425		
Medill	162.450		
Neosho	162.450		
Piedmont	162.425		
St. Louis	162.550		
Summersville	162.475		
Trenton	162.500		
Wardell	162.525		
West Plains	162.525		

MONTANA

Baker	162.550	Winnemucca	162.400
Belgian Hill	162.500		
Billings	162.550		
Bozeman	162.500		
Browning	162.425		
Butte	162.525		
Circle	162.550		
Dillon	162.475		
Ekalaka	162.475		
Forsyth	162.525		
Glasgow	162.400		
Glendive	162.475		
Glentana	162.525		
Great Falls	162.550		
Hardin	162.450		
Havre	162.400		
Helena	162.400		
Jordan	162.500		
Kalispell	162.550		
Lewistown	162.500		
Livingston	162.525		
Malta	162.475		
Miles City	162.400		
Missoula	162.400		
Plentywood	162.475		
Poplar	162.425		
Ryegate	162.450		
Scobey	162.450		
Wibaux	162.500		
Winnett	162.400		

NEBRASKA

Albion	162.500	Buffalo	162.550
Bassett	162.475	Call Hill	162.425
Beatrice	162.450	Cattaraugus	162.425
Cambridge	162.525	Cooperstown	162.450
Chadron	162.525	Elmira	162.400
Columbus	162.450	Frewsburg	162.525
Grand Island	162.400	Gore Mtn	162.450
Holdrege	162.475	Highland	162.475
Lexington	162.425	Ithaca	162.500
Lincoln	162.475	Lyons	162.475
Merna	162.500	Middleville	162.425
Merriman	162.400	Mt. Washington	162.450

New York City	162.550	Sandusky	162.400
Norwich	162.525	Toledo	162.500
Riverhead	162.475	Youngstown	162.500
Rochester	162.400		
Spencerport	162.525		
Stamford	162.400		
Syracuse	162.550		
Walton	162.425		
Watertown	162.475		
White Hill	162.525		

NORTH CAROLINA

Asheville	162.400	Robbinsville	162.525
Buck Mountain	162.500	Rocky Mount	162.475
Cape Hatteras	162.475	Saint Pauls	162.475
Chapel Hill	162.550	Warsaw	162.425
Charlotte	162.475	Windsor	162.525
Ellerbe	162.400	Winnabow	162.550
Garner	162.450	Winston-Salem	162.400
Henderson	162.500		
Linville	162.450		
Mamie	162.425		
Margarettsville	162.450		
Mooreville	162.525		
Mount Jefferson	162.500		
New Bern	162.400		
Robbinsville	162.525		
Rocky Mount	162.475		
Saint Pauls	162.475		
Warsaw	162.425		
Windsor	162.525		
Winnabow	162.550		
Winston-Salem	162.400		

NORTH DAKOTA

Bismarck	162.475	New Town	162.525
Cavalier	162.450	Petersburg	162.400
Dickinson	162.400	Rolla	162.475
Fargo	162.475	Scranton	162.525
Fort Ransom	162.525	Sheyenne	162.525
Grand Forks	162.475	Steele	162.400
Jamestown	162.550	Webster	162.425
Langdon	162.500	Williston	162.550
Minot	162.400	Willow City	162.450
New Town	162.525		
Petersburg	162.400		
Rolla	162.475		
Scranton	162.525		
Sheyenne	162.525		
Steele	162.400		
Webster	162.425		
Williston	162.550		
Willow City	162.450		

NORTHERN MARIANA ISLANDS

Saipan	162.550
--------------	---------

OHIO

Akron	162.400	Harrisburg	162.550
Athens	162.425	Hibernia Park	162.425
Bridgeport	162.525	Honesdale	162.450
Carey	162.525	Huntingdon	162.525
Chillicothe	162.500	Johnstown	162.400
Cleveland	162.550	Meadville	162.475
Columbus	162.550	Parker	162.425
Dayton	162.475	Philadelphia	162.475
Grafton	162.500	Pittsburgh	162.550
High Hill	162.475	Reynoldsville	162.500
Lima	162.400	State College	162.475
Mansfield	162.450	Towanda	162.525
Marietta	162.400	Warren	162.450
New Philadelphia	162.425	Wellsboro	162.475
Otway	162.525	Wilkes-Barre	162.550

natural disasters and nuclear attack. This concept has been expanded to include warnings for all hazardous conditions that pose a threat to life and safety, both at a local and national level. As a result, NOAA Weather Radio is being better integrated with other National Weather Service systems to provide state and local emergency managers and other warning providers better access to local weather forecast offices, allowing hazard warnings of all types to be broadcast on NOAA Weather Radio within seconds

NOAA Weather Radio currently broadcasts from 1033 stations in fifty states, Puerto Rico, the U.S. Virgin Islands, American Samoa, Guam, and Saipan on seven frequencies in the VHF band, ranging from 162.400 to 162.550 megahertz (MHz). These frequencies are outside the normal AM or FM broadcast bands.

Special radios that receive only NOAA Weather Radio, both with and without special alerting features, are available from numerous manufacturers. In addition, other manufacturers are including NWR capability in a variety of receivers. NOAA Weather Radio capability is currently available on automobile, aircraft, marine, citizens band, and standard AM/FM radios as well as communications receivers, transceivers, scanners, and cable TV.

By nature and design, NOAA Weather Radio coverage is limited to an area within 40 miles of the transmitter. The quality of reception is dictated by transmitter distance, local terrain, and the quality and location of the receiver. In general, those using a high quality receiver on flat terrain or at sea can expect reliable reception beyond 40 miles. Those with standard receivers, surrounded by large buildings in cities and those in mountain valleys may experience little or no reception at considerably less than 40 miles. If possible, a receiver should be tested in the location where it will be used prior to purchase.

NOAA Weather Radio is directly available to a large portion of the U.S. and covers greater than 95 percent of the population.

If you have a question regarding the technical aspects of NOAA Weather Radio such as transmitter location, reception, and characteristics or if you are interested in becoming a partner with the National Weather Service to identify or provide local funding and/or facilities for the installation of a NOAA Weather Radio transmitter, please contact your local National Weather Service Office or send a letter to:

National Weather Service
Attn: Dissemination Systems Branch, W/DSB
1325 East-West Highway
Silver Spring, MD 20910

