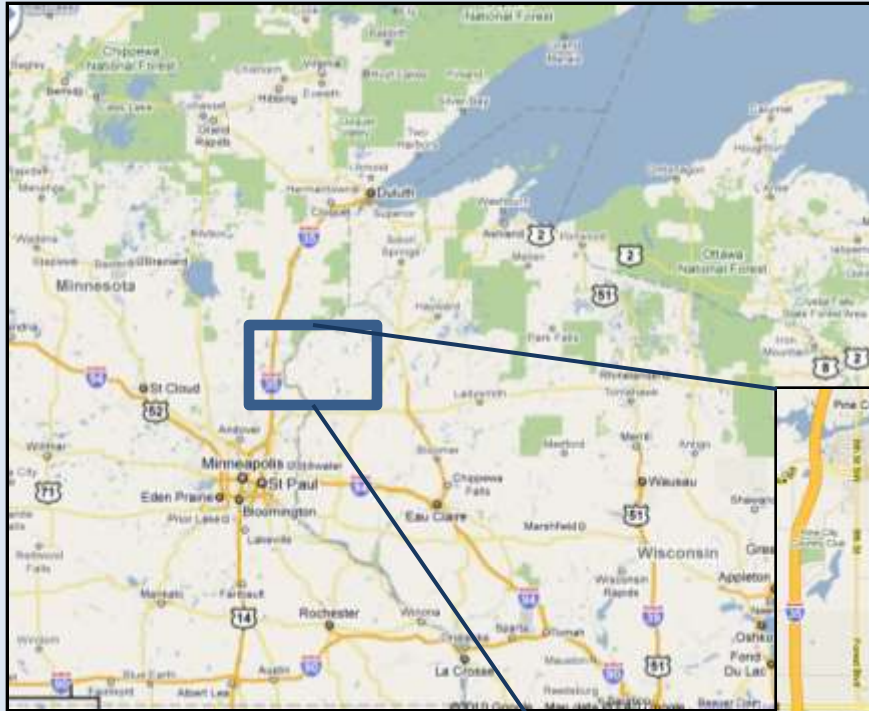


Saint Croix River Tornado

Between Rush City, MN and Grantsburg, WI



2010 June 17th

After



Before













SHERIFF
PINE COUNTY







The Chimney was taken off
of this house by the tornado



And all of the insulation was sucked out from the attic













Courtesy Minnesota Dept. of Natural Resources



Courtesy Minnesota Dept. of Natural Resources

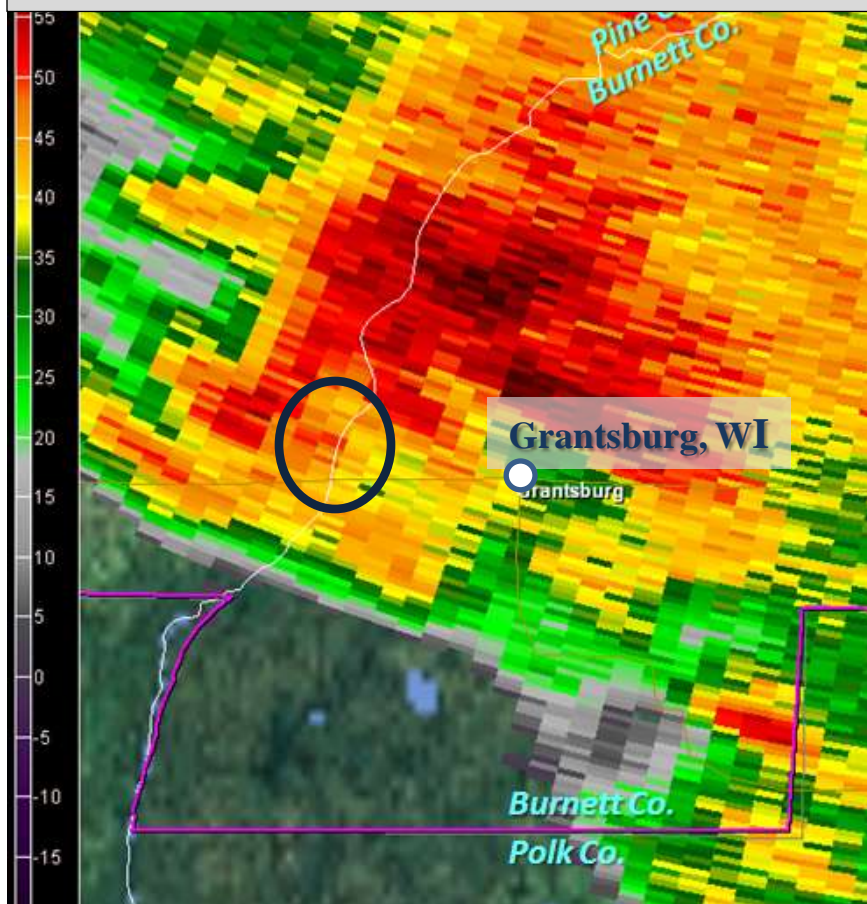


Courtesy Minnesota Dept. of Natural Resources

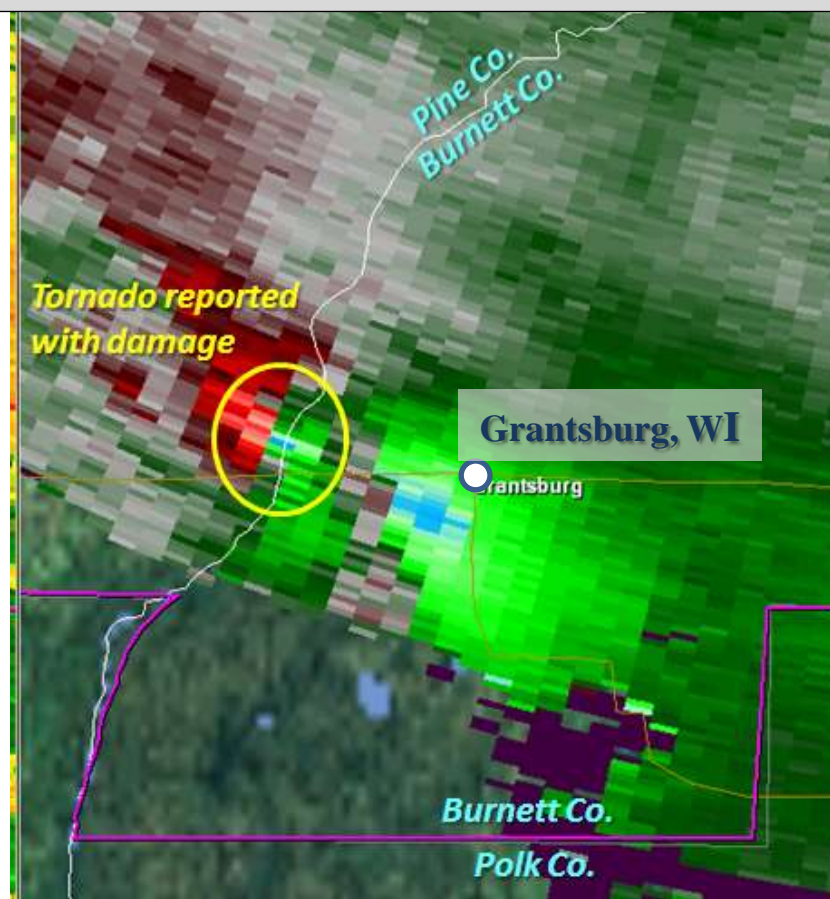
The below images are corresponding radar reflectivity and velocity from when the storm was located on the Minnesota and Wisconsin state border a few miles south of Pine City, MN, or about 5 miles west of Grantsburg, WI.



Radar Imagery from 8:59 pm CDT 2010 June 17th



0.5 Degree Reflectivity (strength)



0.5 Degree Velocity (wind)