



NORTHLAND WRN AMBASSADORS



January 2022

NWS Duluth, MN

Issue 4



Weather-Ready Nation National Oceanic and Atmospheric Administration



Images from 2018

Inside the Issue

WINTER SAFETY SEASON!

Now that winter is here, it's time to be prepared for hazards of the cold and snow. More info p. 3

PROBABILISTIC SNOWFALL

Learn more about the probabilistic snowfall forecasts available from the NWS p. 2

WINTER ROAD SAFETY

Learn about road and safety info resources available from our MN and WI DOT partners on p. 3

NORTHERN LIGHTS!

The Aurora Borealis (Northern Lights) are the result of electrons colliding with the Earth's upper atmosphere, and are visible when there is an increase in space weather activity. They can be observed in dark and clear areas of the Northland.

To learn more about auroras and other Space Weather phenomena, visit weather.gov/space and for an aurora forecast, visit <https://www.swpc.noaa.gov/>



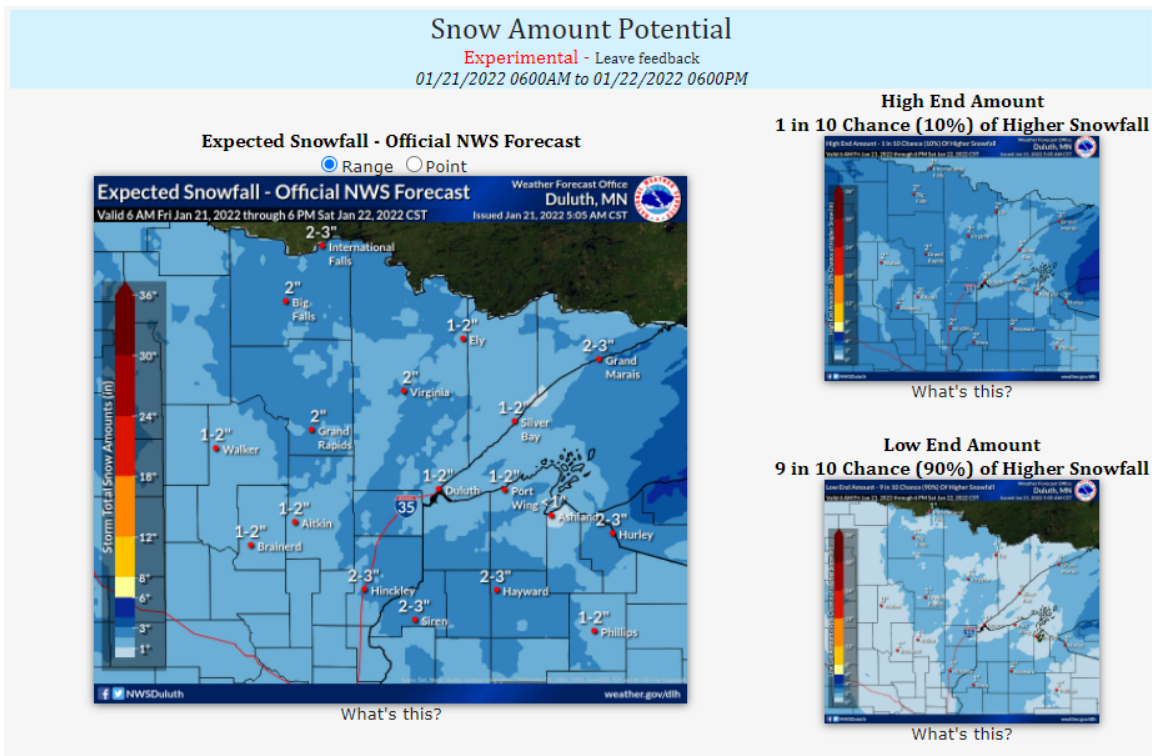
Space Weather can be beautiful

The scientific name for northern lights is Aurora Borealis



Weather.gov/space

PROBABILISTIC SNOWFALL FORECASTS



PWPF, or Probabilistic Winter Precipitation Forecasts, are a tool to communicate uncertainty in the snow forecast for the region. This information is already used in our social media posts, briefing packets, and other graphics we produce for the public and our partners, and provide a full set of forecast information, rather than just the current expectation, to enable better decisions by all. They are publicly available at weather.gov/dlh/winter.

These Probabilistic Winter Precipitation Forecasts include an expected snowfall forecast map, and then also a lower end and an upper end snowfall amount, as an unlikely scenario with an 80 percent chance that the eventual snowfall will fall between the low end and high end amounts. There are also a series of maps that depict the likelihood of exceeding specific snowfall amounts. Last, there is a table that recaps the forecast and range of possibilities, connected to specific locations around the area.

When looking at these graphics, pay close attention to the dates and times the graphics are for. The low end and high end snowfall forecasts can be used as a best and worst case scenario when making your outdoor plans or managing snow removal activities. The smaller the range between the low end and high end amounts, the greater our confidence in those snowfall forecasts. Lake effect snow forecasts may sometimes underestimate the highest potential snowfall. These forecasts are updated twice daily, around 4 AM/PM, and are usually for a time range within 3 days of the current time.

5 Tips For Shoveling Snow Safely

1. Get the latest forecast
2. Push don't lift
3. Wear breathable clothes
4. Wear warm boots
5. Drink water

Get the latest forecast at: weather.gov



WINTER ROAD SAFETY INFORMATION

With winter in full swing across the Northland, it's important to remind drivers on safe winter driving practices. Fortunately, both the Minnesota and Wisconsin DOT maintain websites with current road conditions as well as winter driving safety tips.

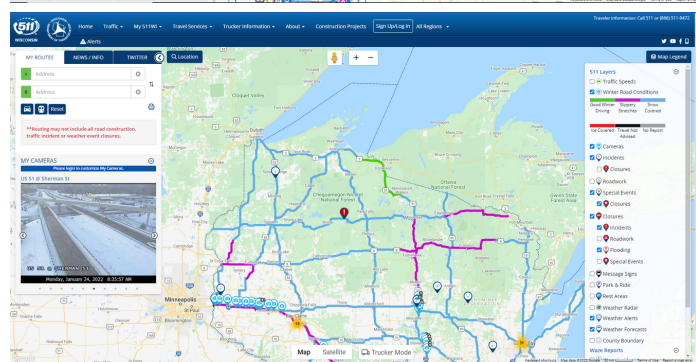
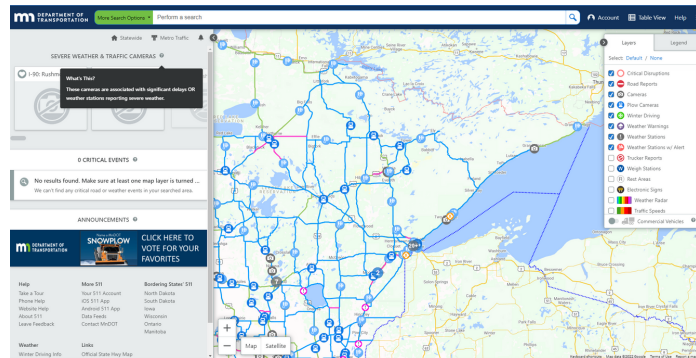
MN-511 and WI-511 are both websites maintained by the DOT to show current road conditions, webcams, weather conditions, NWS watch/warning products, and more. The links to these websites are:

[MN511: https://511mn.org/](https://511mn.org/)

[WI511: http://511wi.gov/](http://511wi.gov/)

Visit <https://www.weather.gov/safety/winter>

for useful winter safety information you can share on social media, website or to print out and share with your visitors!



COLD WATER AND ICE SAFETY

There is no such thing as 100 percent safe ice. You can't judge the strength of ice just by its appearance, age, thickness, temperature, or whether or not the ice is covered with snow. Strength is based on all these factors -- plus the depth of water under the ice, size of the water body, water chemistry and currents, the distribution of the load on the ice, and local climatic conditions.

If you go through the ice unexpectedly, the difference in the air temperature and water temperature can be drastic and dramatic. Roughly 20 percent of those who fall into cold water die in the first minutes of immersion due to cold water shock. Even strong swimmers can lose muscle control in about 10 minutes in cold water. [weather.gov/safety/coldwater](https://www.weather.gov/safety/coldwater)

In addition to current road conditions, both DOTs provide safety tips for winter driving. The Homeland Security and Emergency Management division of the MN Dept. of Public Safety is another resource for safety tips when driving in the winter.

[MNDOT: www.dot.state.mn.us/workzone/winter.html](http://www.dot.state.mn.us/workzone/winter.html)

[HSME: dps.mn.gov/divisions/hsem/weather-awareness-preparedness/Pages/winter-driving.aspx](http://dps.mn.gov/divisions/hsem/weather-awareness-preparedness/Pages/winter-driving.aspx)

[WISDOT: wisconsindot.gov/Pages/safety/education/winter-drv/default.aspx](http://wisconsindot.gov/Pages/safety/education/winter-drv/default.aspx)

Ice Thickness	Minimum Guidelines for New, Clear Ice
4"	Minimum Guidelines for New, Clear Ice
5-7"	Minimum Guidelines for New, Clear Ice
8-12"	Minimum Guidelines for New, Clear Ice
12-15"	Minimum Guidelines for New, Clear Ice

Ice is never 100% safe!



WEATHER READY NATION AMBASSADORS

The National Weather Service office in Duluth, Minnesota is calling on community organizations and agencies to become Weather-Ready Nation (WRN) Ambassadors. WRN Ambassadors help in spreading WRN messages and building community resilience to extreme weather. Building a Weather-Ready Nation requires more than just the National Weather Service. It requires the entire community, its government, organizations and businesses to provide information for better decision making, and innovative partnerships across all segments of society. We must involve everyone in an effort to move people - and society - toward heeding warnings, taking action, and influencing their circles of family, friends, and social network to act appropriately.

As a WRN Ambassador, you will serve as a leader in your community. You will inspire others to be better informed and prepared, helping to minimize or even avoid the impacts of these natural disasters.

To officially be recognized as a WRN Ambassador, an organization must commit to:

- Promoting Weather-Ready Nation messages and themes to their stakeholders;
- Engaging with National Weather Service Duluth personnel on potential collaboration opportunities;
- Sharing their success stories of preparedness and resiliency;
- Serving as an example by educating employees on workplace preparedness.

Together, we will inform and empower communities, businesses, and people to make pre-event decisions that can be life-saving and prevent or limit devastating economic losses. We are a nation of many communities, and it is only through connected communities that we will achieve this goal.

To apply to become a WRN Ambassador, visit <https://www.weather.gov/wrn/amb-tou>