



# Drought Information Statement for NE Minnesota & NW Wisconsin

Valid October 11, 2024

Issued By: NWS Duluth, MN

Contact Information:

- Next Update: Friday, October 25, 2024
  - Please see all currently available products at <https://drought.gov/drought-information-statements>.
  - Please visit <https://www.weather.gov/DLH/DroughtInformationStatement> for previous statements.
  - Please visit <https://www.drought.gov/drought-status-updates/> for regional drought status updates.
- 
- Moderate the Severe Drought conditions have expanded across the Northland early this fall as a very dry weather pattern continues



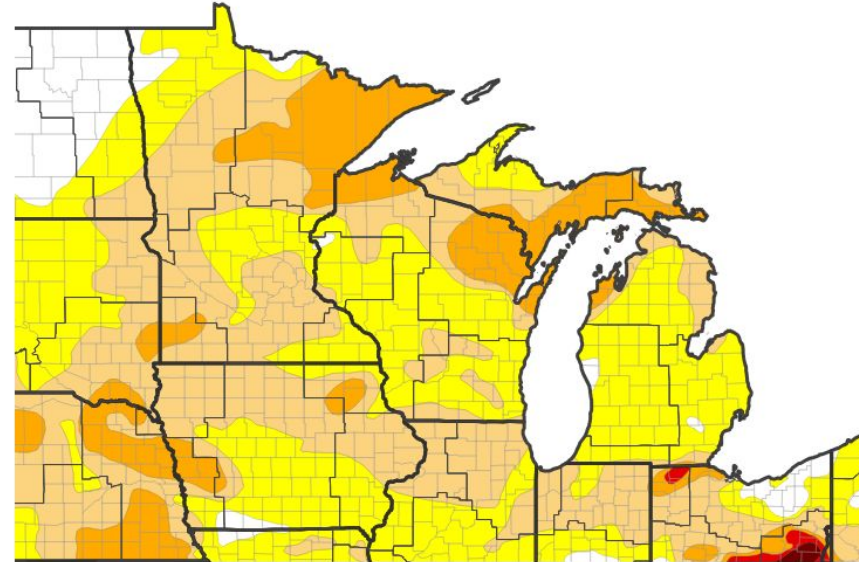


# U.S. Drought Monitor

Link to the [latest U.S. Drought Monitor](#) for the Northland

- Drought intensity and Extent
  - **D2 (Severe Drought)**: Arrowhead, Twin Ports, South Shore and Leech Lake region
  - **D1 (Moderate Drought)**: Much of inland northwest Wisconsin, Brainerd Lakes and far north-central Minnesota
  - **D0: (Abnormally Dry)**: Near International Falls, St. Croix River Valley and southern Price County

## U.S. Drought Monitor



## U.S. Drought Monitor



Source(s): NDMC, NOAA, USDA; image courtesy of Drought.gov

Data Valid: 10/08/24



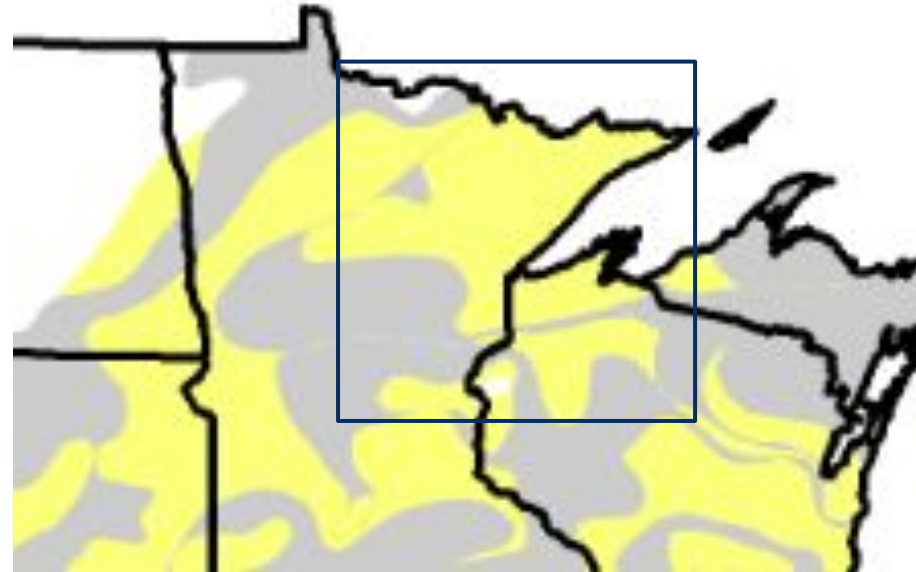


# Recent Change in Drought Intensity

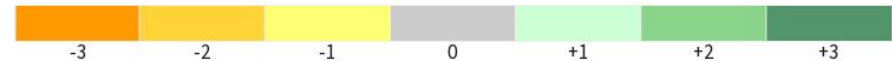
Link to the latest [4-week change map](#) for NE Minnesota and NW Wisconsin

- One Week Drought Monitor Class Change.
  - Drought Worsened: Nearly all of the Northland
  - No Change: Parts of the Brainerd Lakes and the Borderlands of north-central MN
  - Drought Improved: Not Applicable

U.S. Drought Monitor 1-Week Change Map



Drought Change Since Last Week



Source(s): NDMC, NOAA, USDA; image courtesy of Drought.gov

Data Valid: 09/24/24



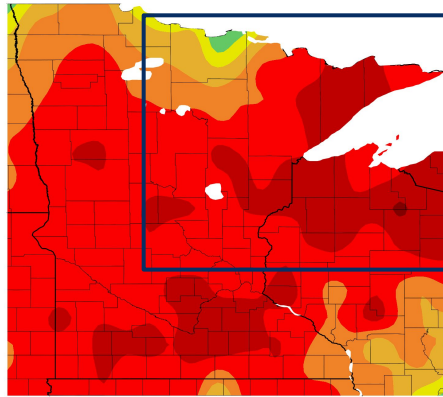


# Precipitation

Precipitation (sum of liquid and melted frozen) that was observed in the Northland over the last month

- Regional precipitation in the past month has been well-below normal.
  - Nearly all locations have seen less than 1" of rainfall since mid-September.
  - There is a pocket of near-normal precipitation along the International Border in MN.

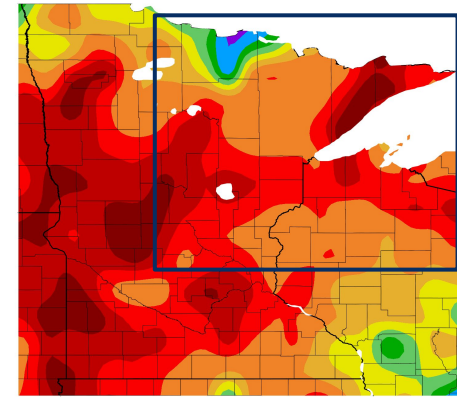
Departure from Normal Precipitation (in)  
9/11/2024 – 10/10/2024



Generated 10/11/2024 at HPRCC using provisional data.

NOAA Regional Climate Centers

Precipitation (in)  
9/11/2024 – 10/10/2024



Generated 10/11/2024 at HPRCC using provisional data.

NOAA Regional Climate Center



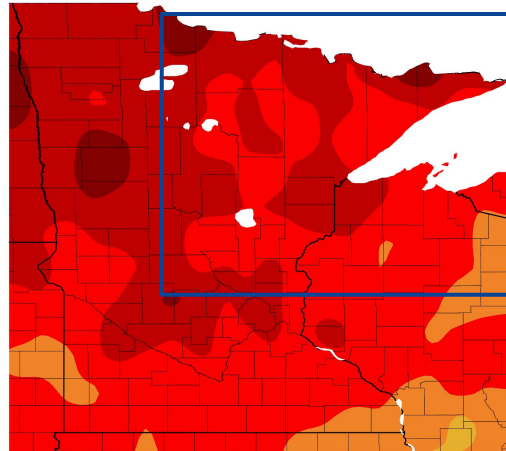


# Temperature

Temperatures that were observed in the Northland over the last month

- Temperatures have been well-above normal across the entire Northland

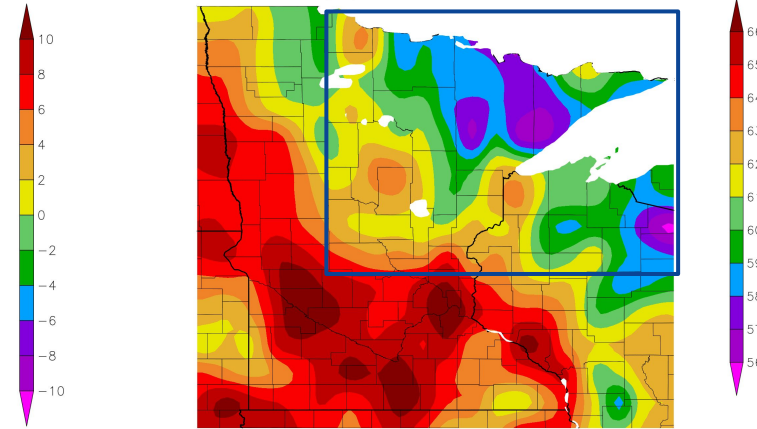
Departure from Normal Temperature (F)  
9/11/2024 – 10/10/2024



Generated 10/11/2024 at HPRCC using provisional data.

NOAA Regional Climate Centers

Temperature (F)  
9/11/2024 – 10/10/2024



rated 10/11/2024 at HPRCC using provisional data.

NOAA Regional Climate Centers





# Summary of Impacts

Links: See/submit [Condition Monitoring Observer Reports \(CMOR\)](#) and view the [Drought Impacts Reporter](#)

## Hydrologic Impacts

- Streamflows are running much below normal around the region ([USGS Streamflow](#)).

## Agricultural Impacts

- Pastures provide very little or no feed. Supplemental feeding is required to maintain livestock conditions.
- Very low soil moisture

## Fire Hazard Impacts

- Fire danger is High to Very High for northeast and north-central Minnesota ([MN Fire Danger](#)). Fire danger is also High for northwest Wisconsin ([WI Fire Danger](#)).

## Other Impacts

- Increased irrigation of gardens and golf courses.
- Less water for wildlife.
- Change in wetlands or swamps.

## Mitigation Actions

- Burn Restrictions - Four counties in [northeast Minnesota](#) have 'Elevated Burning Restrictions', with all others having either 'Restricted' or 'No Open Burning - Campfires Allowed' restrictions in place.





# Hydrologic Conditions and Impacts

- **Northeast Minnesota** - Streams are running much below normal for all basins except far north-central MN.
- **Northwest Wisconsin** - Streams are running much below normal for all basins on the South Shore and are below to near normal for inland northwest Wisconsin.

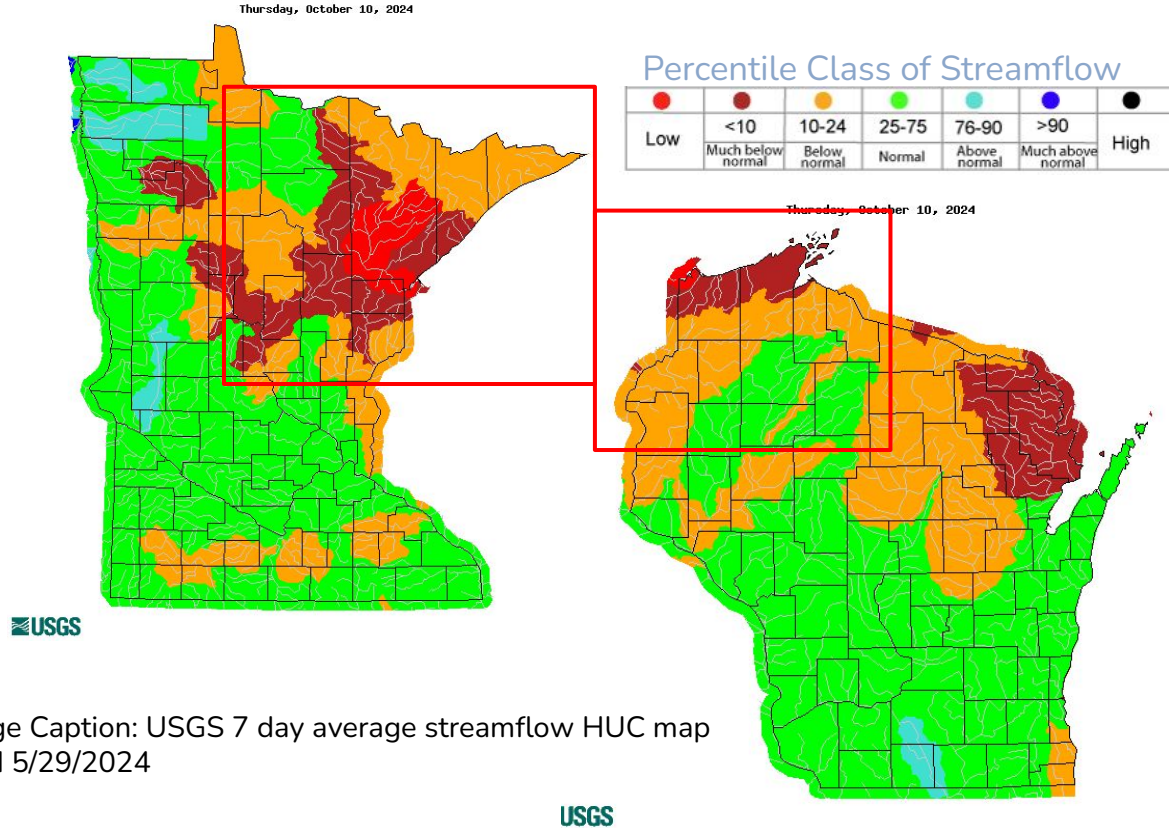


Image Caption: USGS 7 day average streamflow HUC map valid 5/29/2024

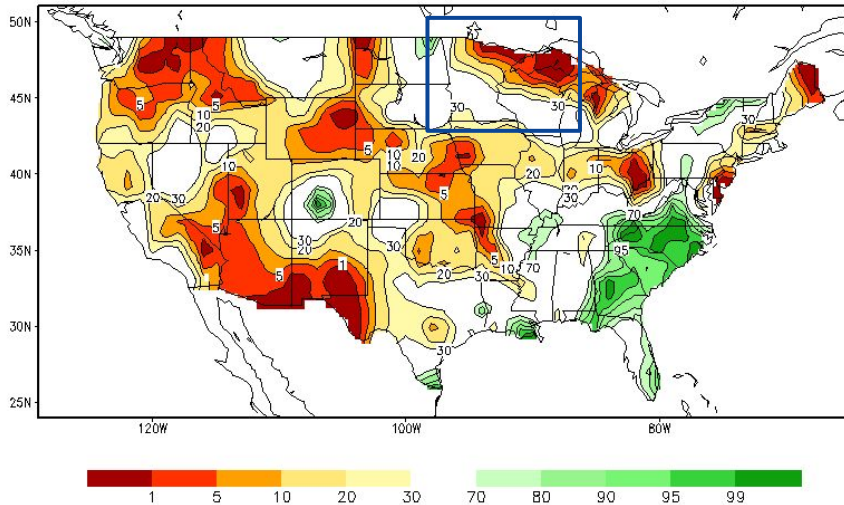




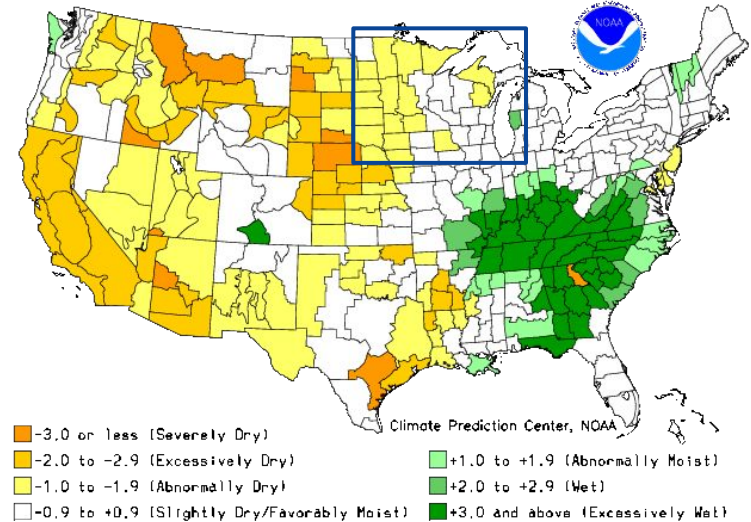
# Agricultural Impacts

- Soil moisture is extremely below normal in the Northland.

Calculated Soil Moisture Ranking Percentile  
OCT 10, 2024



Crop Moisture Index by Division  
Weekly Value for Period Ending OCT 5, 2024  
Short Term Need vs. Available Water in a Shallow Soil Profile



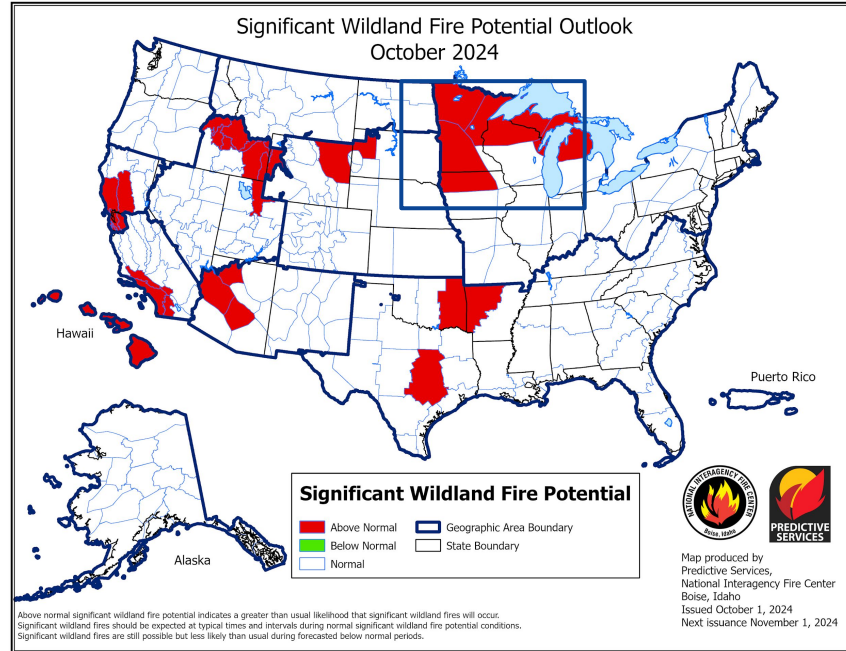




# Fire Hazard Impacts

Link to [Wildfire Potential Outlooks from the National Interagency Coordination Center](#).

- Well below average precipitation and very warm temperatures in late Summer and early Fall are creating persistent elevated fire hazards as shown by the **Significant Wildland Fire Potential** continuing to be **above normal for October**.



Latest MN burn ban and fire danger information available [here](#).

Latest WI burn ban and fire danger information available [here](#).



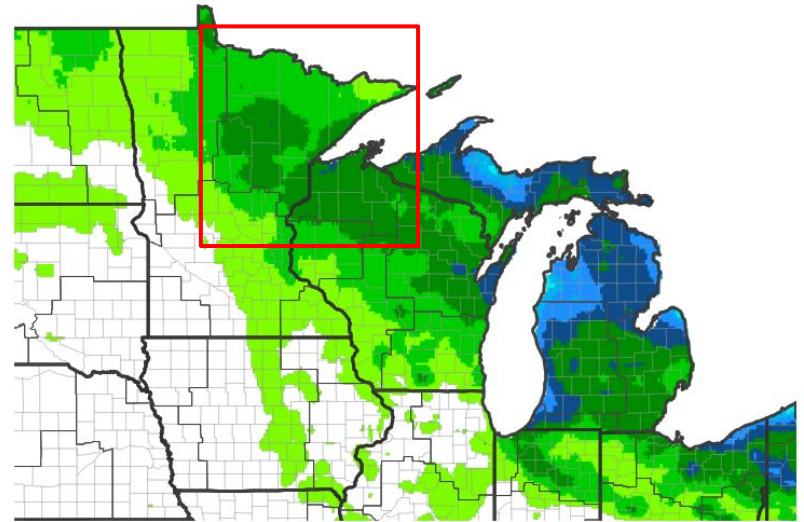


# Seven Day Precipitation Forecast

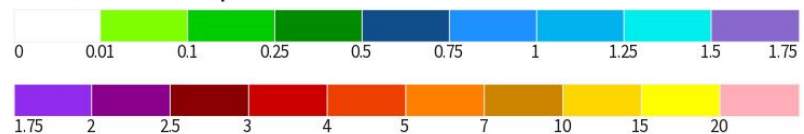
Amount of liquid equivalent precipitation forecast over the next seven days

- One tenth to one-half of an inch of rainfall is forecast to occur Saturday night, 10/12, to Sunday afternoon, 10/13, as a cold front crosses over the Upper Midwest.
- Lake effect rain showers are forecast for the South Shore of northwest Wisconsin Sunday night into early Tuesday morning. Any rain showers are expected to bring localized light to moderate rainfall amounts in this time period.

7-Day Quantitative Precipitation Forecast for October 10, 2024-October 17, 2024



Predicted Inches of Precipitation



Source(s): National Weather Service Weather Prediction Center; image courtesy of Drought.gov

Last Updated: 10/10/24





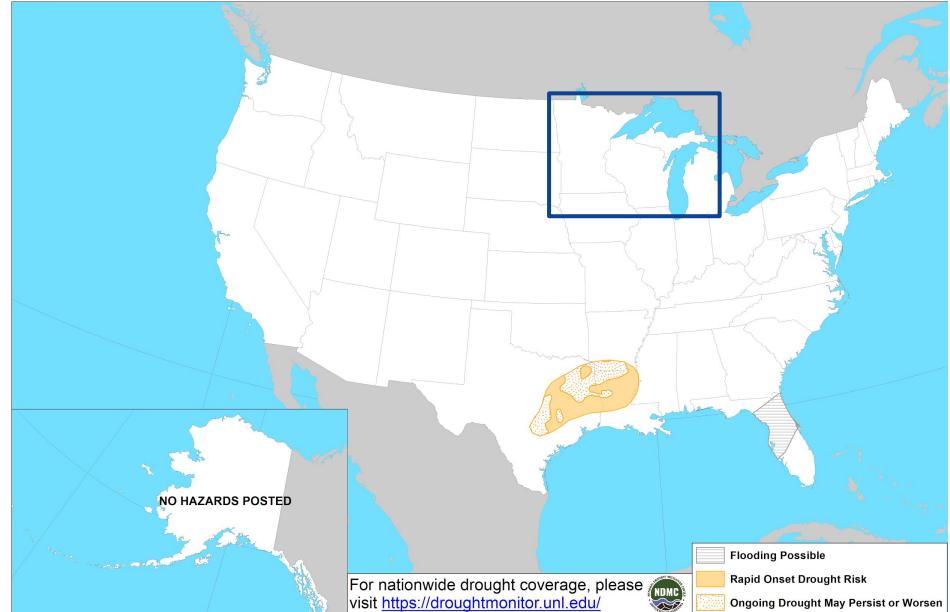
# Rapid Onset Drought Outlook

Links to the latest Climate Prediction Center 8 to 14 day [Temperature Outlook](#) and [Precipitation Outlook](#).

- No rapid onset drought expected.



Day 8-14 U.S. Hazards Outlook  
Valid: 10/18/2024-10/24/2024



Climate Prediction Center  
Made: 10/10/2024 3PM EDT

Follow us:   
[www.cpc.ncep.noaa.gov](http://www.cpc.ncep.noaa.gov)





# Long-Range Outlooks

The latest monthly and seasonal outlooks can be found on the [CPC homepage](#)

- Longer-term forecasts show equal chances for above or below normal precipitation.
- Longer-term forecasts show a 50-55% chance of above normal temperatures being favored in the second half of October and into very early November.

## Precipitation Outlook Oct 19 - Nov 1



### Probability (Percent Chance)



## Temperature Outlook Oct 19 - Nov 1



### Probability (Percent Chance)



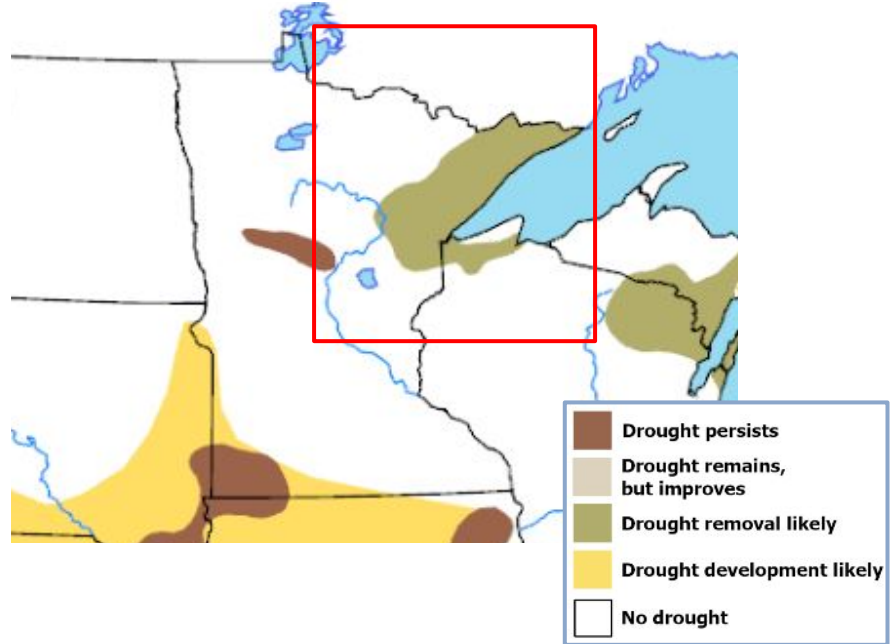


# Drought Outlook

The latest monthly and seasonal outlooks can be found on the [CPC homepage](#)

- Parts of the Arrowhead and South Shore that are currently experiencing drought could see drought end within the next few months.

## Seasonal Outlook October - December 2024



Links to the latest:

[Climate Prediction Center Monthly Drought Outlook](#)

[Climate Prediction Center Seasonal Drought Outlook](#)



National Oceanic and  
Atmospheric Administration

U.S. Department of Commerce

National Weather Service  
Duluth, MN