



Winter/Spring Flood Outlook for Central Pennsylvania

Valid **February 4, 2025**

Issued by: WFO State College

Contact Information: ctp.stormreports@noaa.gov

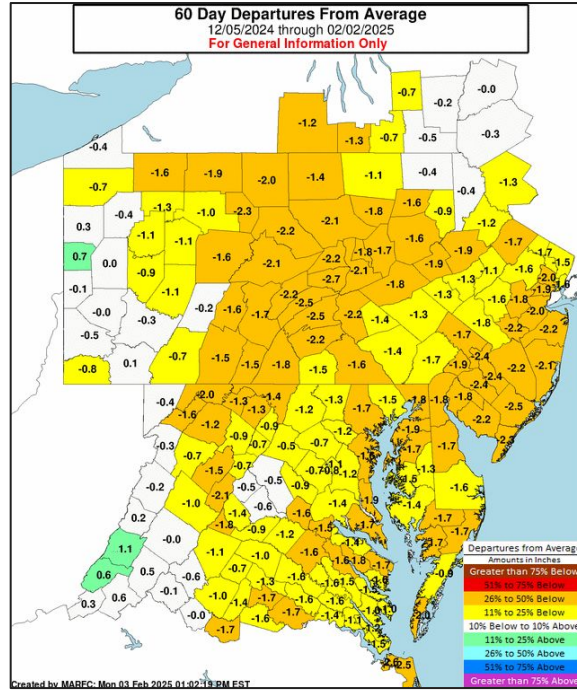
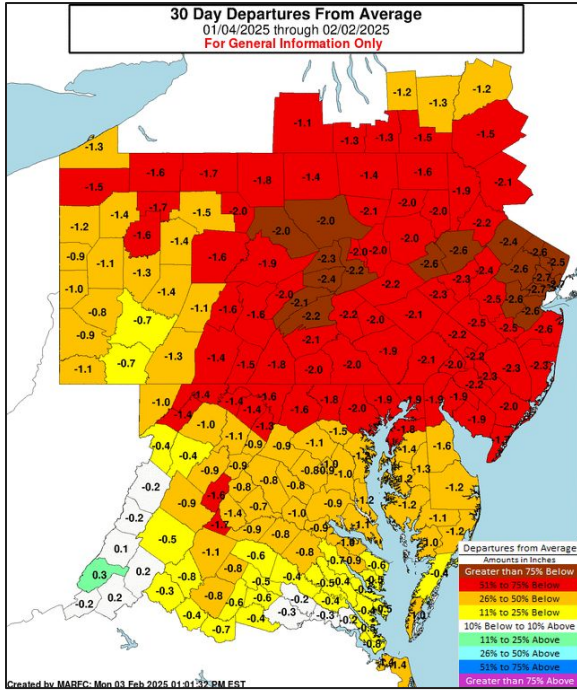
- Next update due by **February 21, 2025**
 - This product will be updated approximately every two weeks through early Spring, and more frequently if conditions change significantly.
 - Please visit <https://www.weather.gov/ctp/moreWater?tabName=Outlooks> for previous statements.
-
- Much of Central Pennsylvania has been drier than average over the past couple of weeks.
 - The forecast over the next two weeks calls for a trend towards above average precipitation.
 - The overall flood potential over the next two weeks is **NEAR AVERAGE**.
 - See presentation for details





30-Day and 60-Day Precipitation Departures

Link to the [30-Day](#) and [60-Day](#) Precipitation Departures



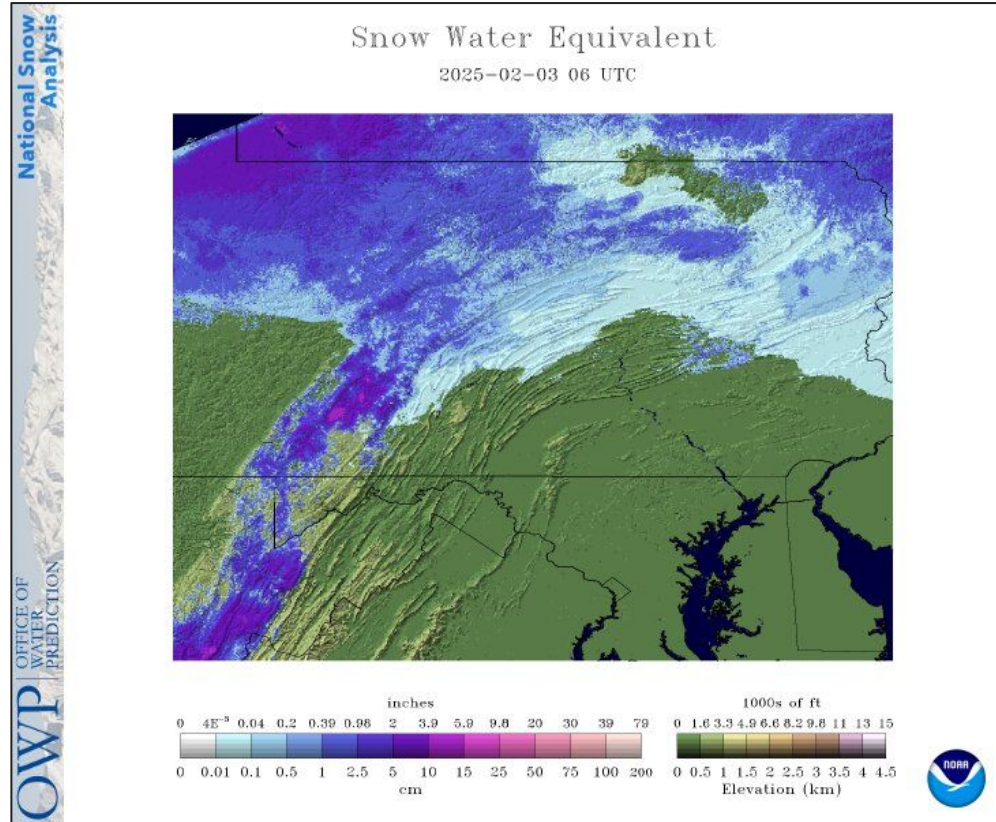
- 30-Day Precipitation Departures are well below average across Central Pennsylvania and 60-Day Precipitation Departures are below average.



Latest Snow Water Equivalent (SWE)

Link to the [Snow Water Equivalent for Pennsylvania](#)

- The latest Snow Water Equivalent (SWE) across is 1-2.5 inches across much of the Allegheny Plateau, with 2.5-5 inches (locally higher) across parts of the Laurel Highlands.
- Little if any snow cover was observed across the south-central mountains and the Lower Susquehanna Valley.

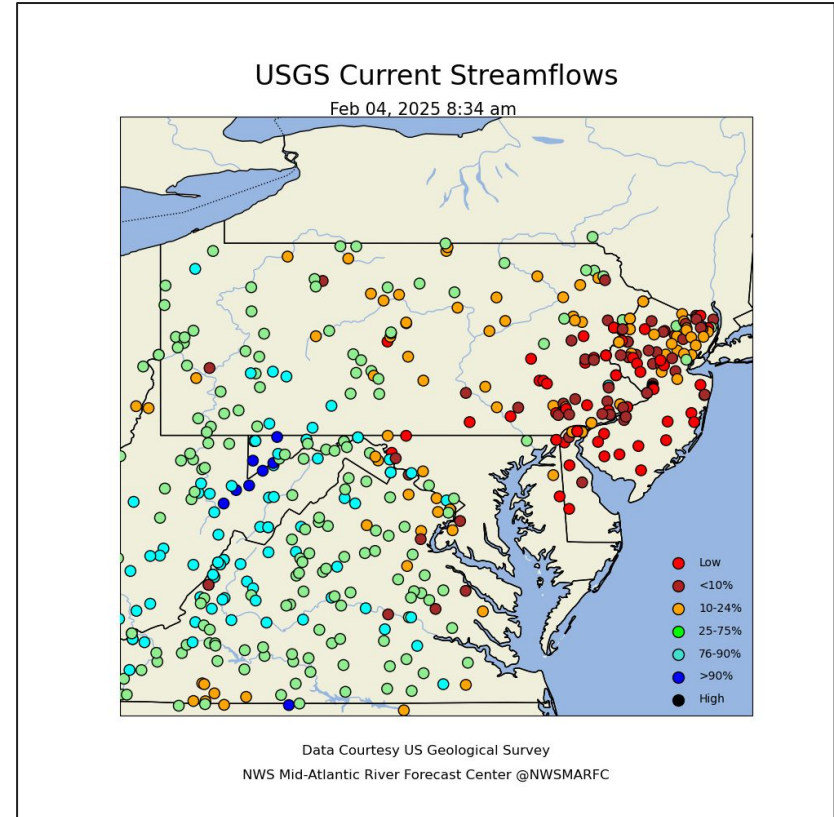




Hydrologic Conditions and Impacts

Link to [latest USGS Streamflows](#)

- Streamflows are generally running near average across western Pennsylvania, near to below average across central Pennsylvania and northeastern Pennsylvania, and well below average across southeastern Pennsylvania.

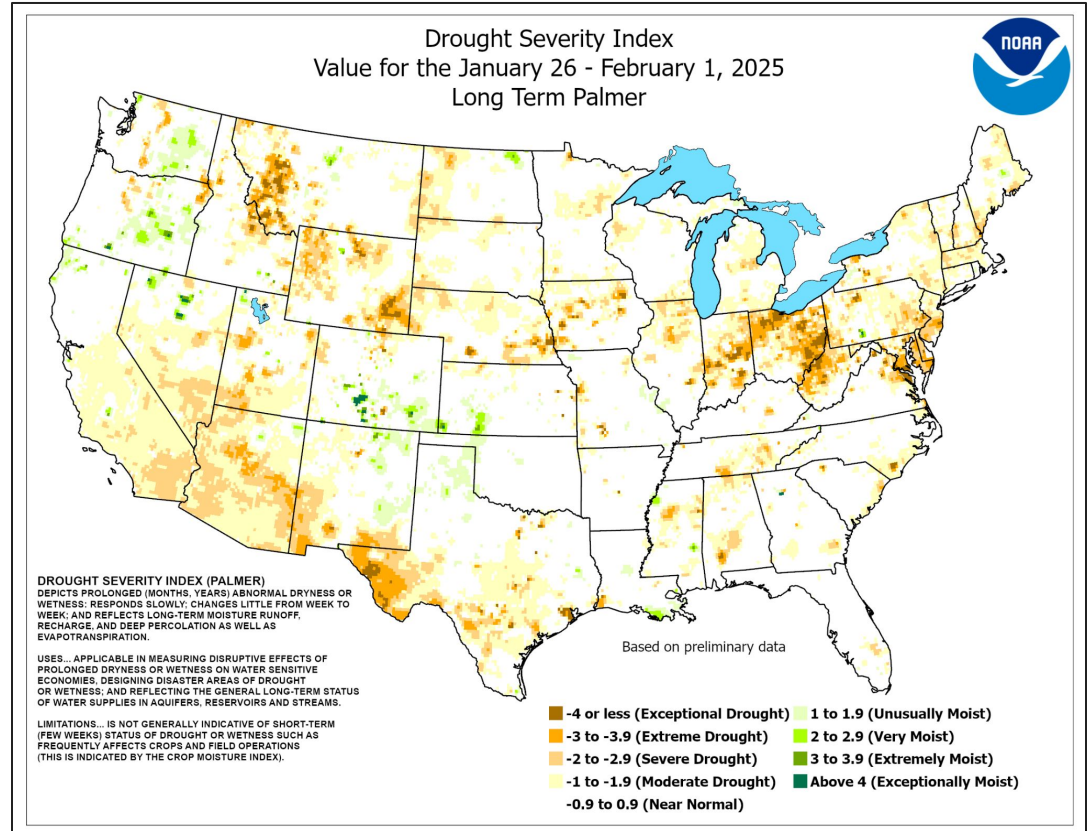




Drought Severity Index - Long Term Palmer

Link to the [latest Drought Severity Index - Long Term Palmer](#)

- The long term Palmer Drought Severity Index is near normal across much of Central Pennsylvania, but trending drier across the Lower Susquehanna Valley.

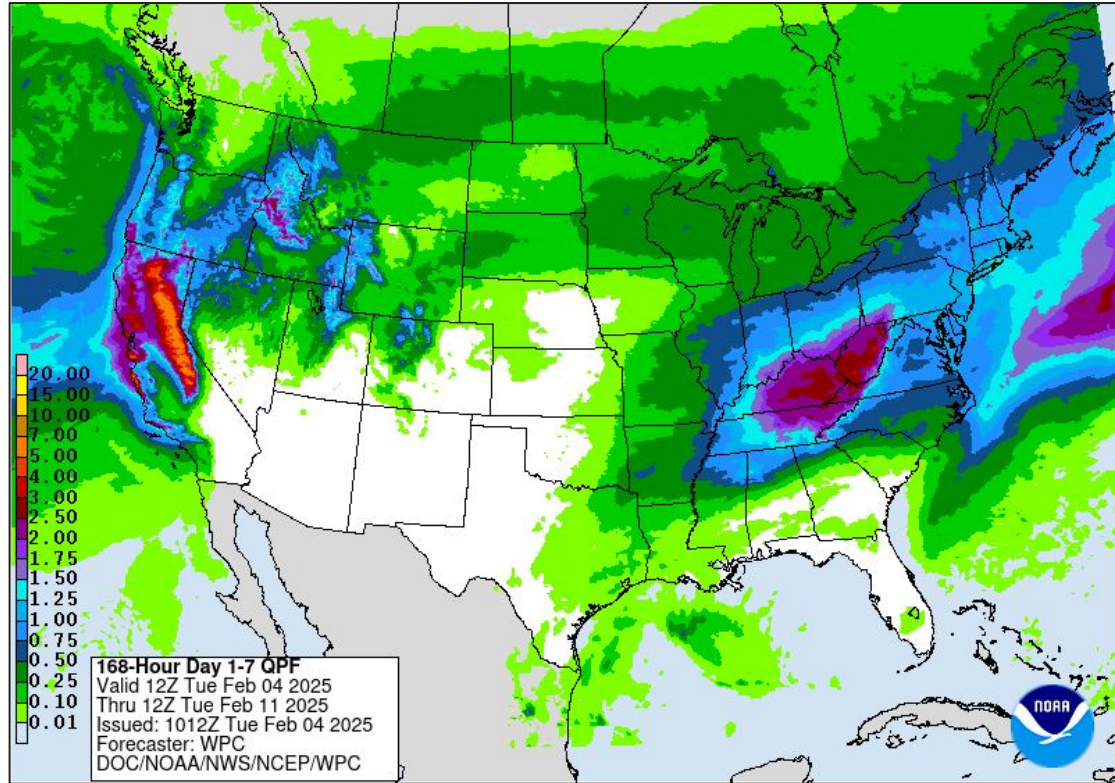




Seven Day Precipitation Forecast

Link to [latest Quantitative Precipitation Forecast \(QPF\)](#) from WPC

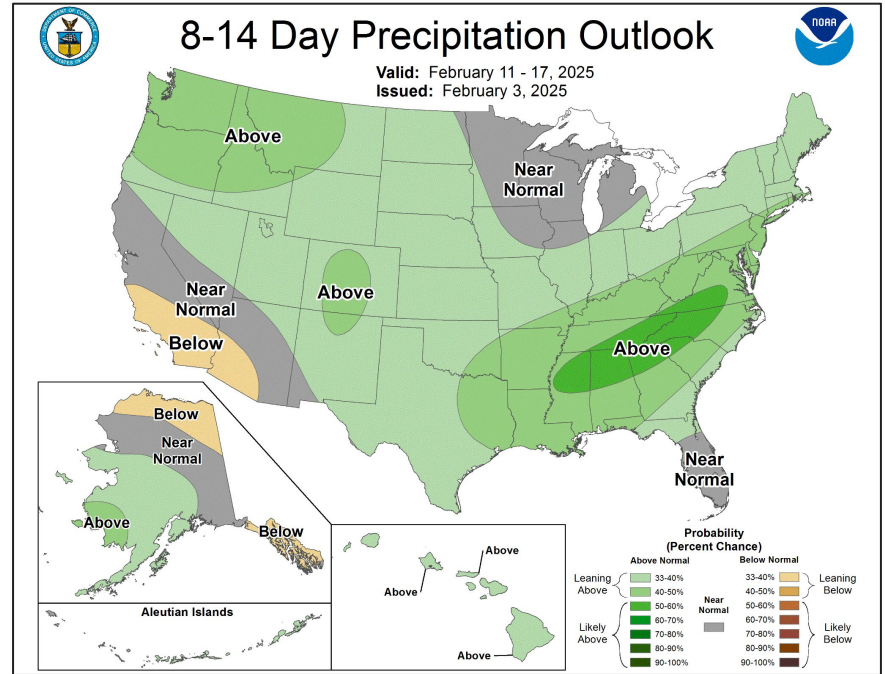
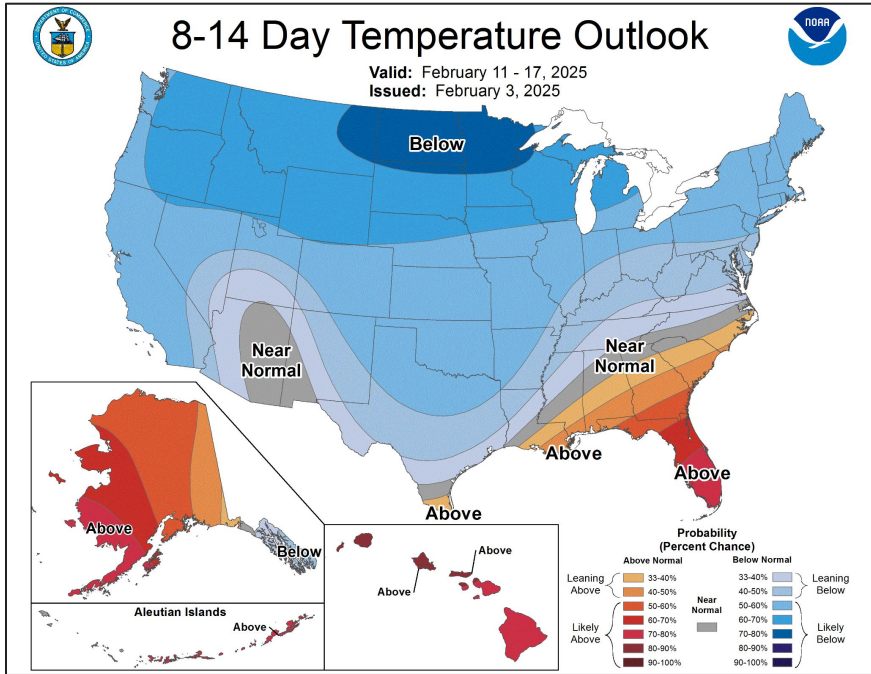
- The 7-Day precipitation forecast ranges from 0.50-0.75" across far northern Pennsylvania to nearly 2.00" across the far southwest.





8-14 Day Temperature and Precipitation Outlooks

The latest 6-10 Day , 8-14 Day, monthly and seasonal outlooks can be found on the [CPC homepage](#)

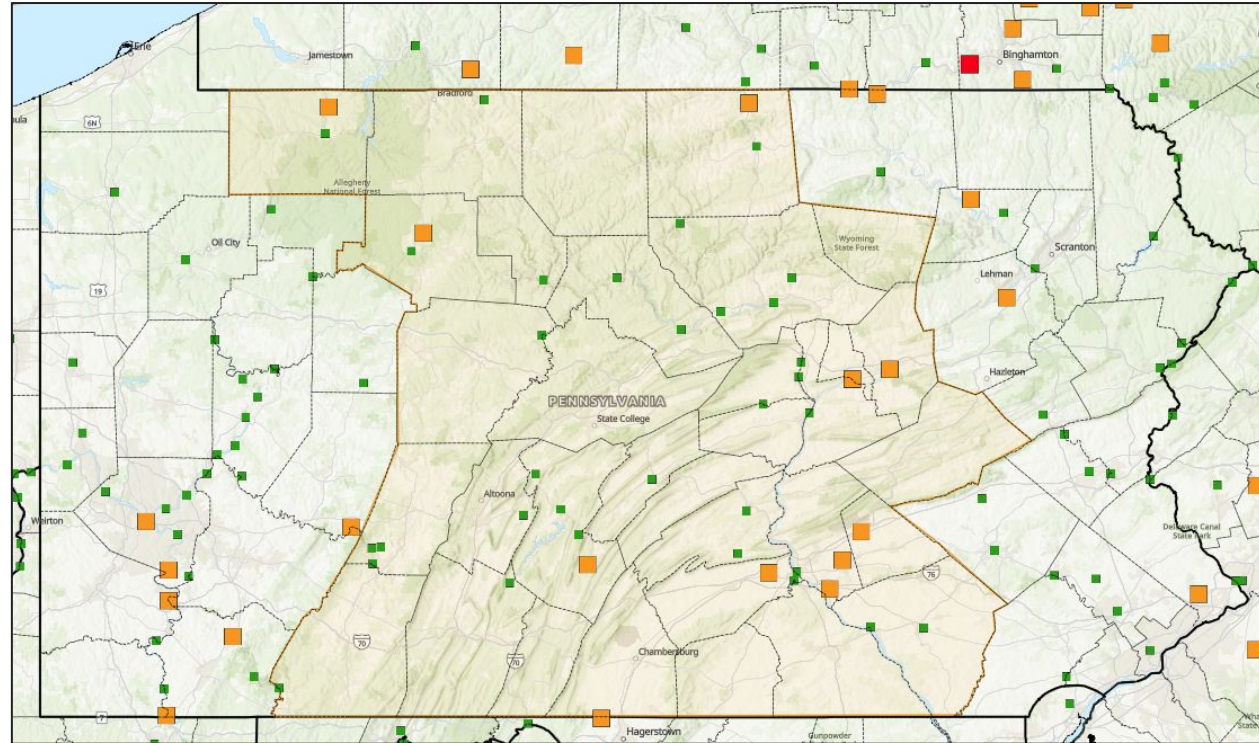


- The 8-14 day forecast calls for a trend towards colder than average temperatures and above average precipitation.



Long-Range River Outlook (25% Probability)

- These model forecasts take into consideration current, future, and historical trends.
- The points highlighted in **orange** and **red** have a 25% or greater chance of exceeding flood levels this Spring.
- This forecast accounts for natural flow only, and does not consider potential ice jams.





Flood Outlook Summary

Current and expected conditions:

- Recent precipitation: Below to well below average
 - Snow conditions: Near average
 - River Ice: Near average
 - Streamflow Conditions: Near to below average
 - Soil Moisture Conditions: Near to below average
 - Groundwater: Near to below average
 - Reservoir Conditions: Near to below average
 - Precipitation Forecast: Above average precipitation is favored over the next two weeks
-
- The overall flood potential over the next two weeks is **NEAR AVERAGE**.

Next update: February 21, 2025

