



Drought Information Statement for South Texas

Valid August 1, 2024

Issued By: NWS Corpus Christi, TX

Contact Information: sr-crp.webmaster@noaa.gov

- This product will be updated by September 7, 2024 or sooner if drought conditions change significantly.
- Please see all currently available products at <https://drought.gov/drought-information-statements>.
- Please visit <https://www.weather.gov/crp/DroughtInformationStatement> for previous statements..

- Abnormally dry conditions return to the Northern Brush Country
- Above normal rainfall across the region
- Above normal rainfall expected for the region through August



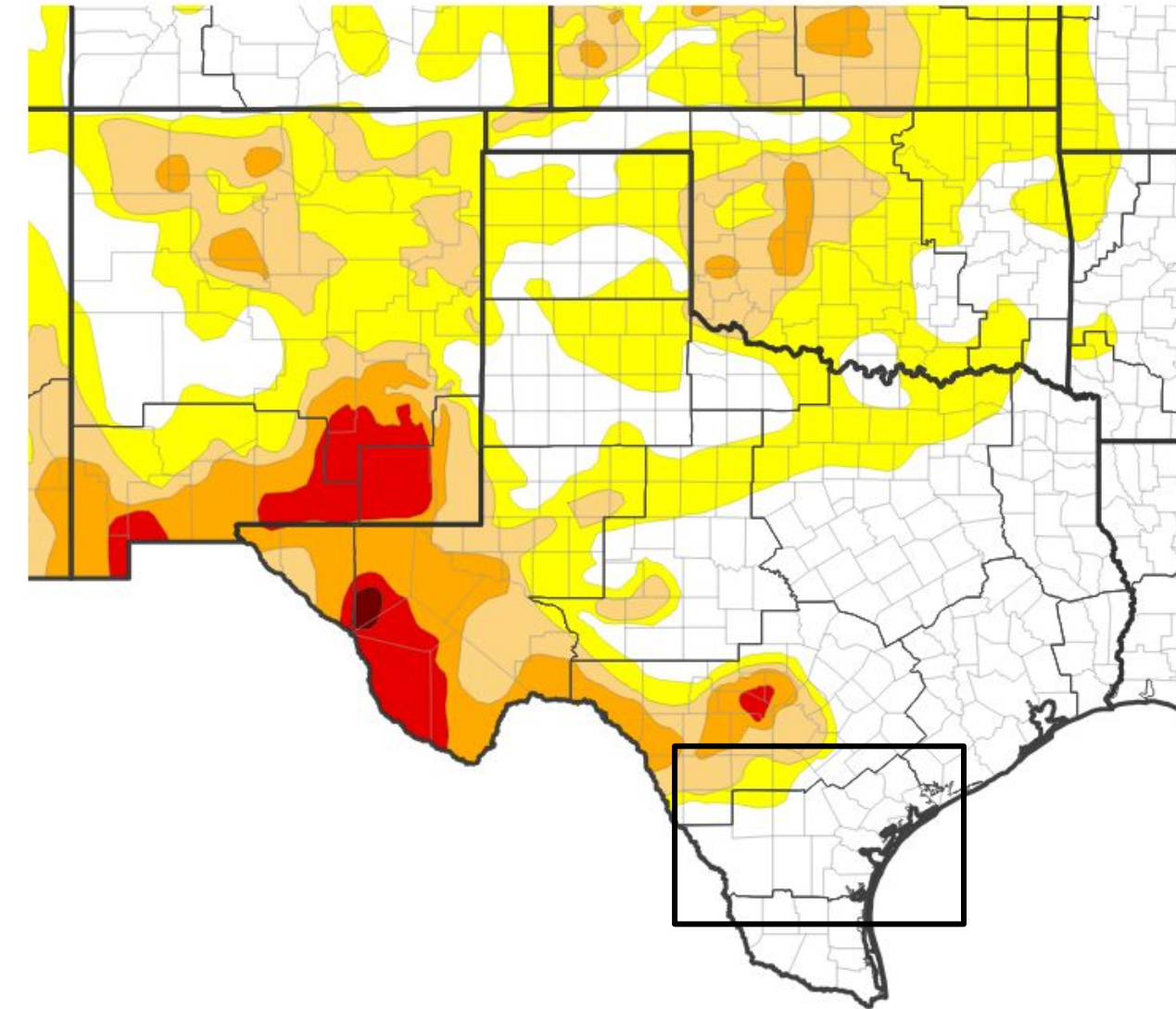
U.S. Drought Monitor

August 1, 2024
6:39 PM

Link to the [latest U.S. Drought Monitor](#)

- Drought intensity and Extent
 - **D4 (Exceptional Drought):** None
 - **D3 (Extreme Drought):** None
 - **D2 (Severe Drought):** None
 - **D1 (Moderate Drought):** None
 - **D0: (Abnormally Dry):** Northern La Salle and McMullen counties

U.S. Drought Monitor



U.S. Drought Monitor



Source(s): NDMC, NOAA, USDA; image courtesy of Drought.gov

Data Valid: 07/30/24



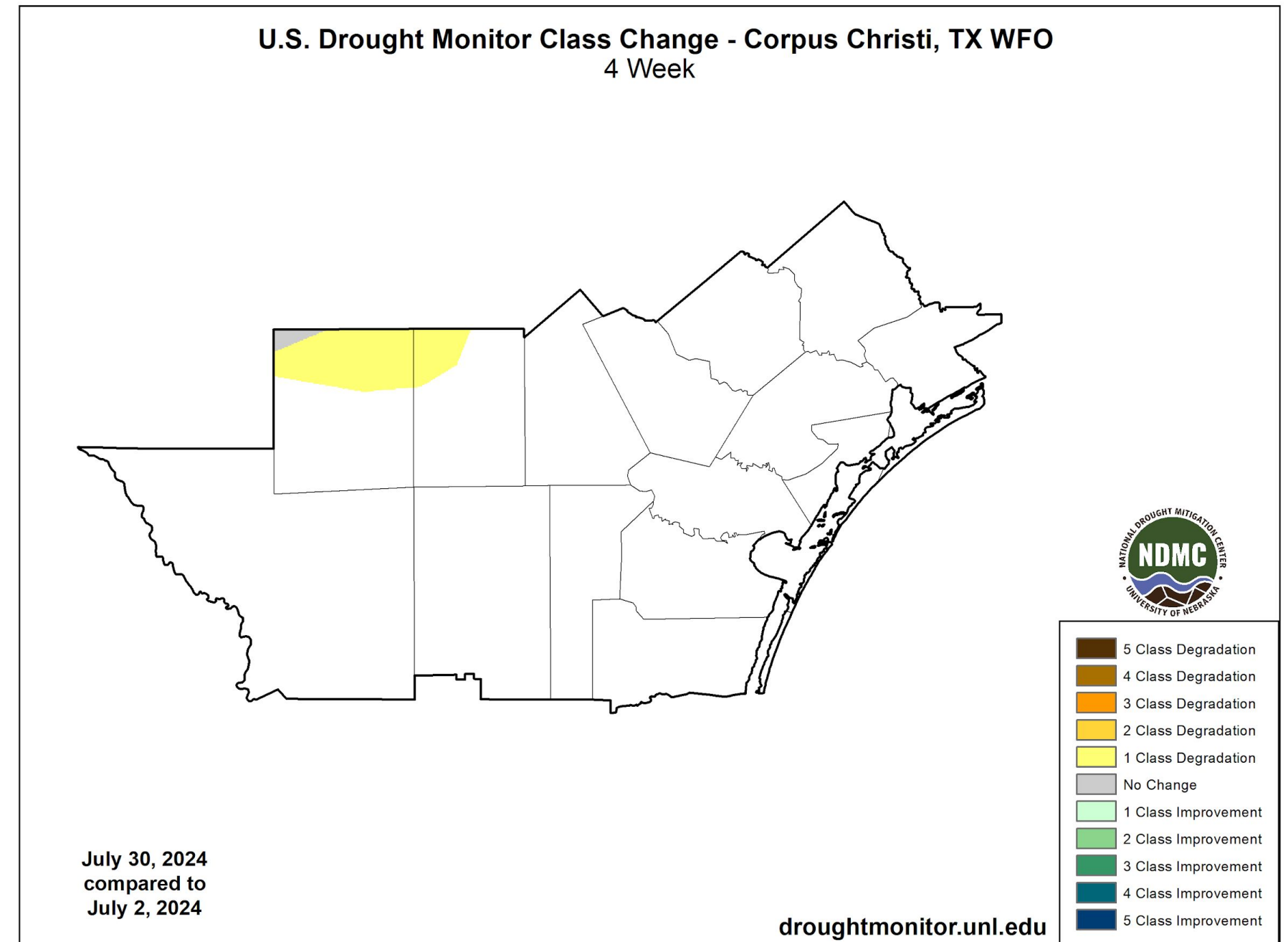


Recent Change in Drought Intensity

August 1, 2024
6:39 PM

Link to the latest [4-week change map](#)

- Four Week Drought Monitor Class Change.
 - Drought Worsened: Northern La Salle and McMullen counties
 - No Change: All of South Texas.
 - Drought Improved: None





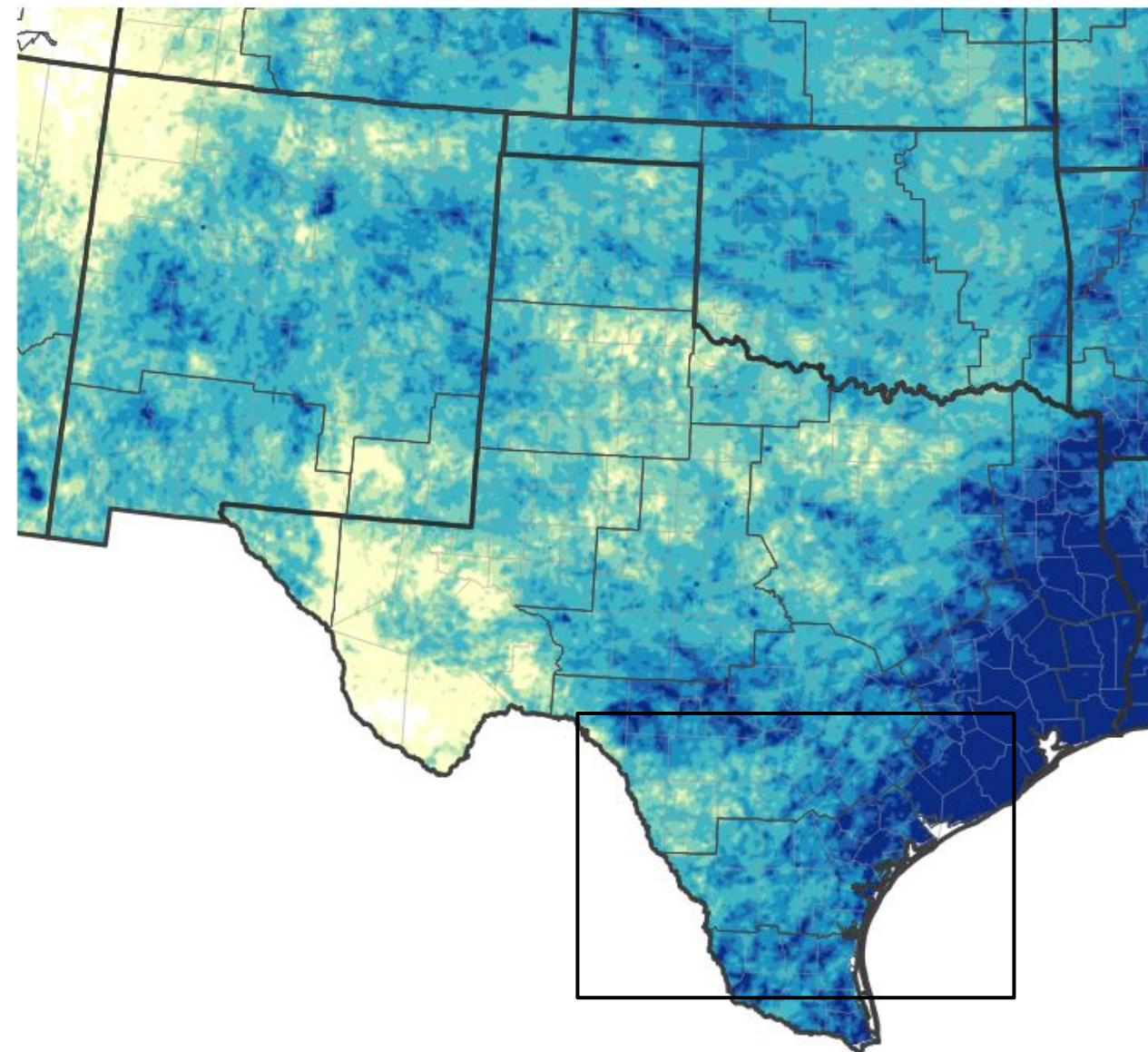
Precipitation

August 1, 2024
6:39 PM

South Texas Rainfall

- A large amount of South Texas saw above normal rainfall with amounts generally in the 2-8" range. The majority of this rainfall came during late July when a system moved slowly through the region. The most significant rain occurred during a 6 hour period where Padre Island received 11.63".

30-Day Precipitation Accumulations (Inches)

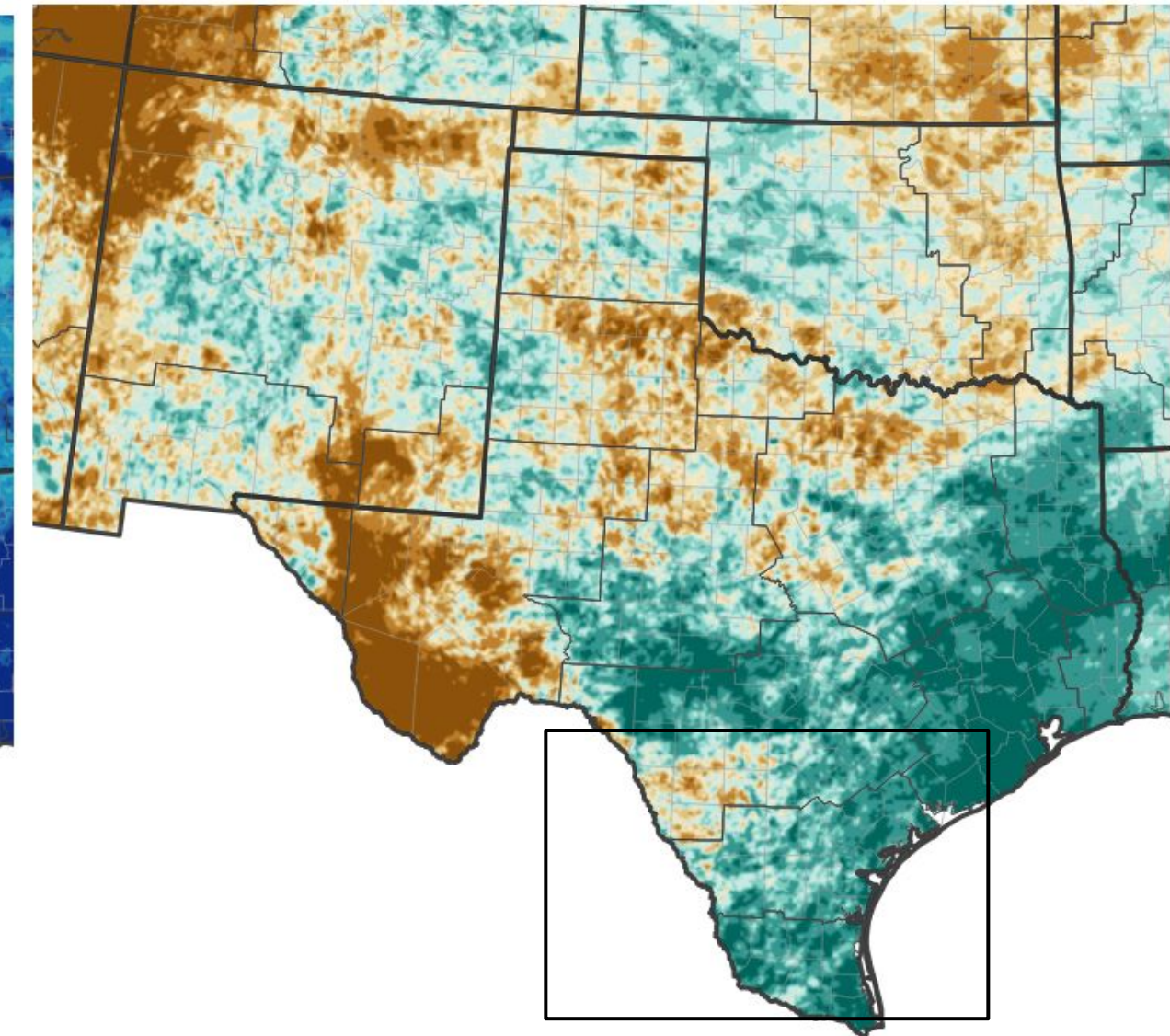


Inches of Precipitation

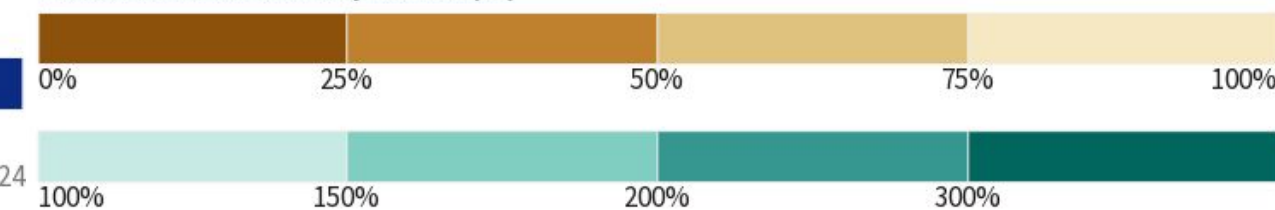


Source(s): National Weather Service Multi-Radar Multi-Sensor System; image courtesy of Drought.gov Last Updated: 08/01/24

30-Day Percent of Normal Precipitation



Percent of Normal Precipitation (%)



Source(s): National Weather Service Multi-Radar Multi-Sensor System; image courtesy of Drought.gov Last Updated: 08/01/24



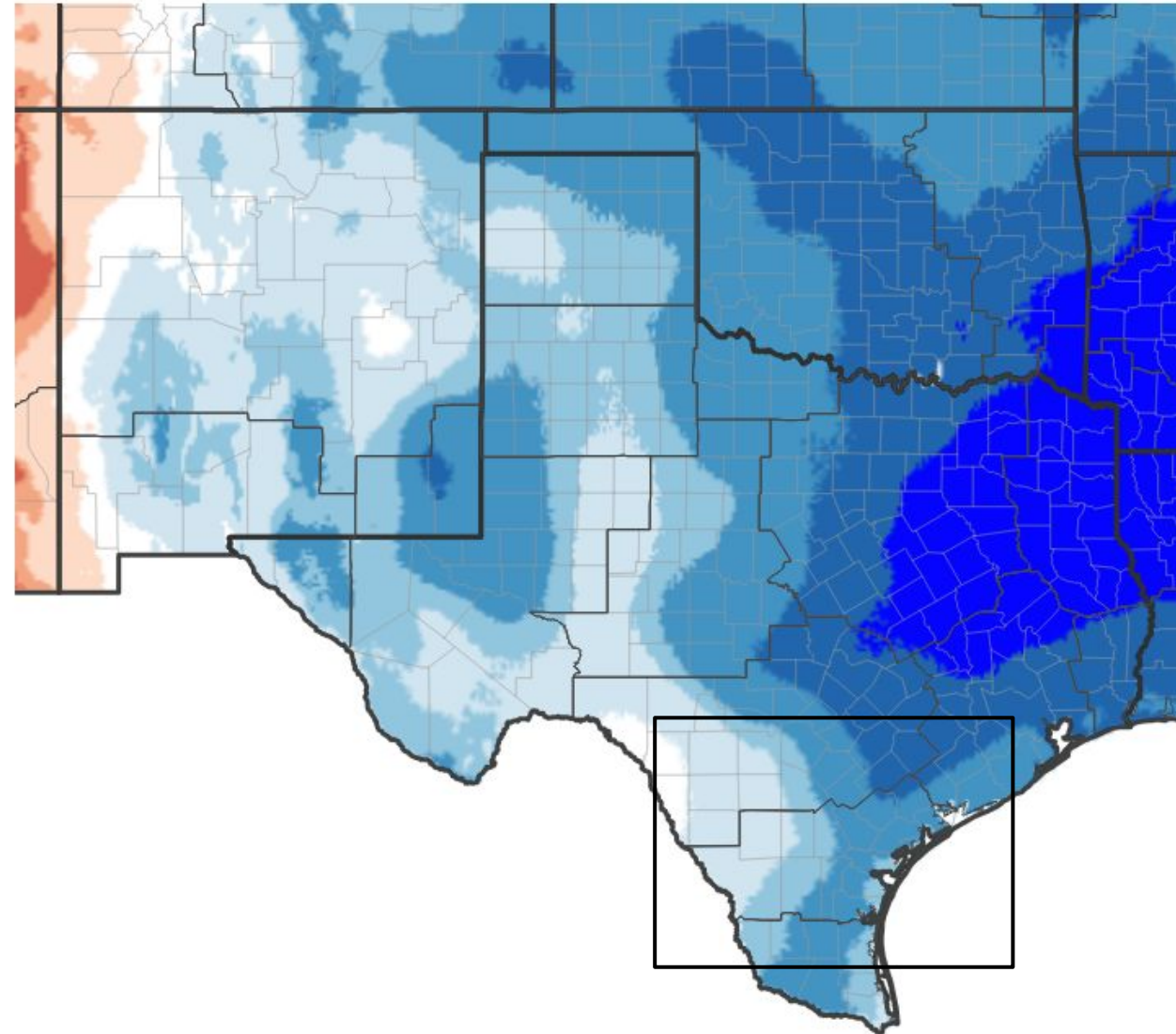


Temperature

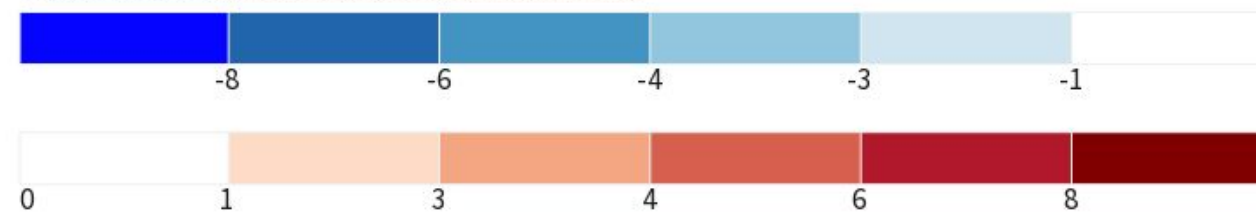
August 1, 2024
6:39 PM

- Temperatures were slightly below normal over the past week
- Looking at the past month, temperatures were near to slightly below normal

7-Day Temperature Anomaly



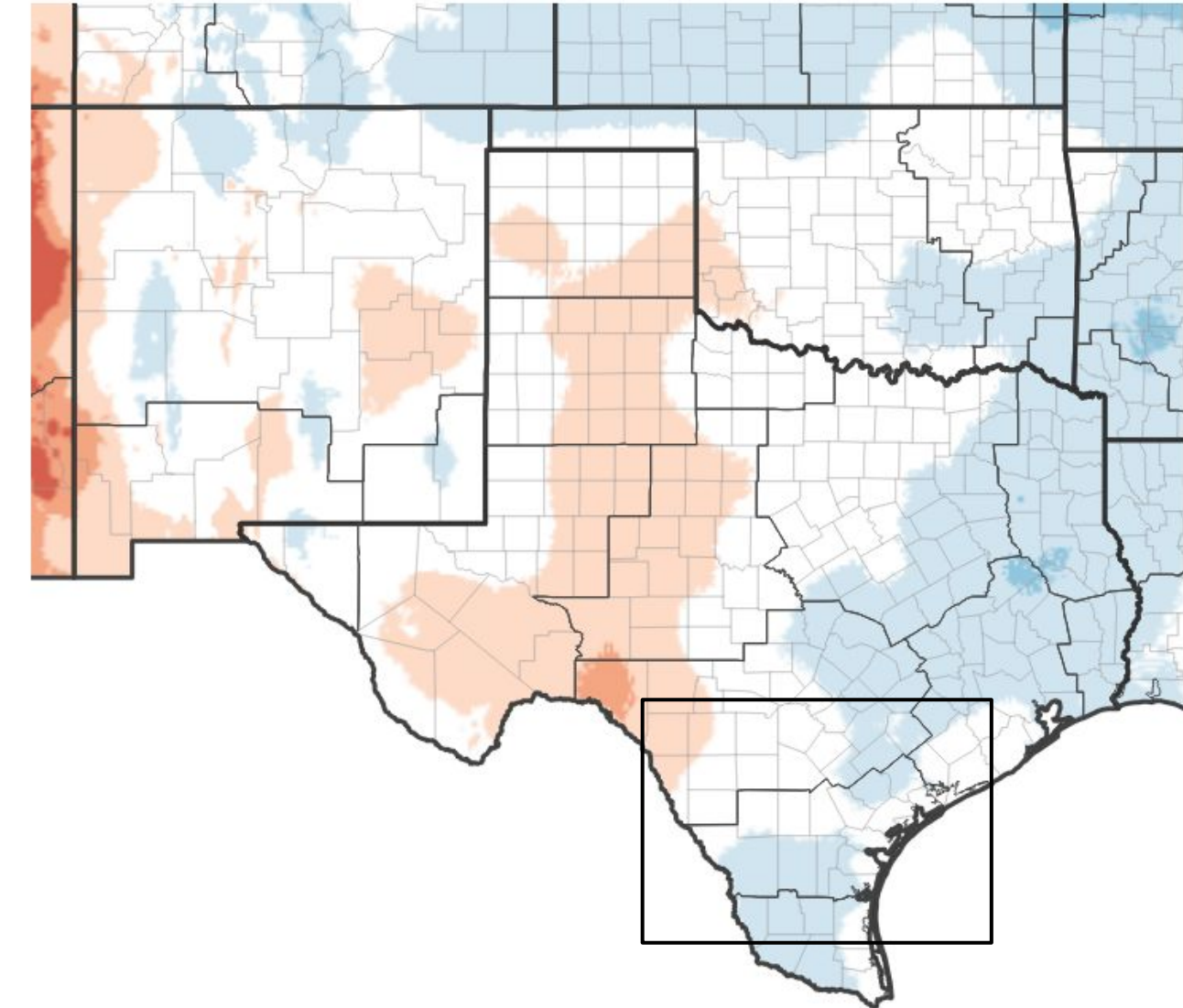
Departure from Normal Max Temperature (°F)



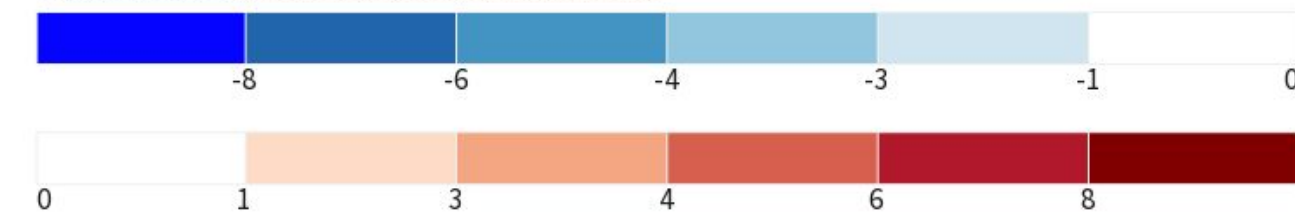
Source(s): NOAA's National Centers for Environmental Information; image courtesy of Drought.gov

Data Valid: 07/27/24

30-Day Temperature Anomaly



Departure from Normal Max Temperature (°F)



Source(s): NOAA's National Centers for Environmental Information; image courtesy of Drought.gov

Data Valid: 07/27/24





Summary of Impacts

August 1, 2024

6:39 PM

Links: See/submit [Condition Monitoring Observer Reports \(CMOR\)](#) and view the [Drought Impacts Reporter](#)

Hydrologic Impacts

- Low reservoir levels contributing to water restrictions

Agricultural Impacts (<https://agrifetoday.tamu.edu/>)

- Coastal Bend: Rain in the district stopped most corn and sorghum harvesting, which allowed grass and weeds to take over fields not harvested. The rain was beneficial, but it also halted hay, corn and rice harvest. The rain since Hurricane Beryl's landfall caused some crop damage, including stalling corn and sorghum harvests and causing sprouting in some sorghum plants. The corn harvest should be complete as soon as fields dry out. Range and pasture conditions were good, and producers have reported the best production so far. Cattle remained in excellent condition, and market prices were high
- South: The district received varying amounts of rainfall ranging from 0.5-5 inches and experienced cooler temperatures, which improved pastures and other crops in most areas. Corn harvest continued while sorghum was reaching maturity and was expected to be harvested this week. A few areas where rain fell the hardest halted harvest, but producers will begin again as soon as the fields dry. Sunflower, peanut and sesame crop conditions were good, and watermelon harvest was complete in some areas. Cotton crops overall were in good condition and harvest was in progress, except in a few counties that were halted due to rains. Producers were reporting some rust mite damage in citrus, but crops looked fair overall. Hay fields continued to be cut and baled in most areas. Pasture and rangeland conditions were good. Cattle were reported in good condition, and cattle markets were still very strong.





Summary of Impacts

August 1, 2024
6:39 PM

Links: See/submit [Condition Monitoring Observer Reports \(CMOR\)](#) and view the [Drought Impacts Reporter](#)

Fire Hazard Impacts

- Low to moderate fire danger at this time

Other Impacts

- Corpus Christi under stage 2 water restrictions (<https://www.cctexas.com/>)
- Laredo under stage 3 water restrictions (<https://laredoutilities.com/water-conservation-program/>)
- Alice under stage 2 restrictions
(<https://www.alicetx.com/2024/03/11/city-of-alice-enters-stage-2-moderate-drought-restriction/#/>)
- Bishop under stage 2 water restrictions
(<https://southtexascommunitynews.com/stcn/bishop-under-stage-2-water-restrictions#gsc.tab=0>)

Mitigation Actions

- Please refer to your municipality and/or water provider for mitigation information.

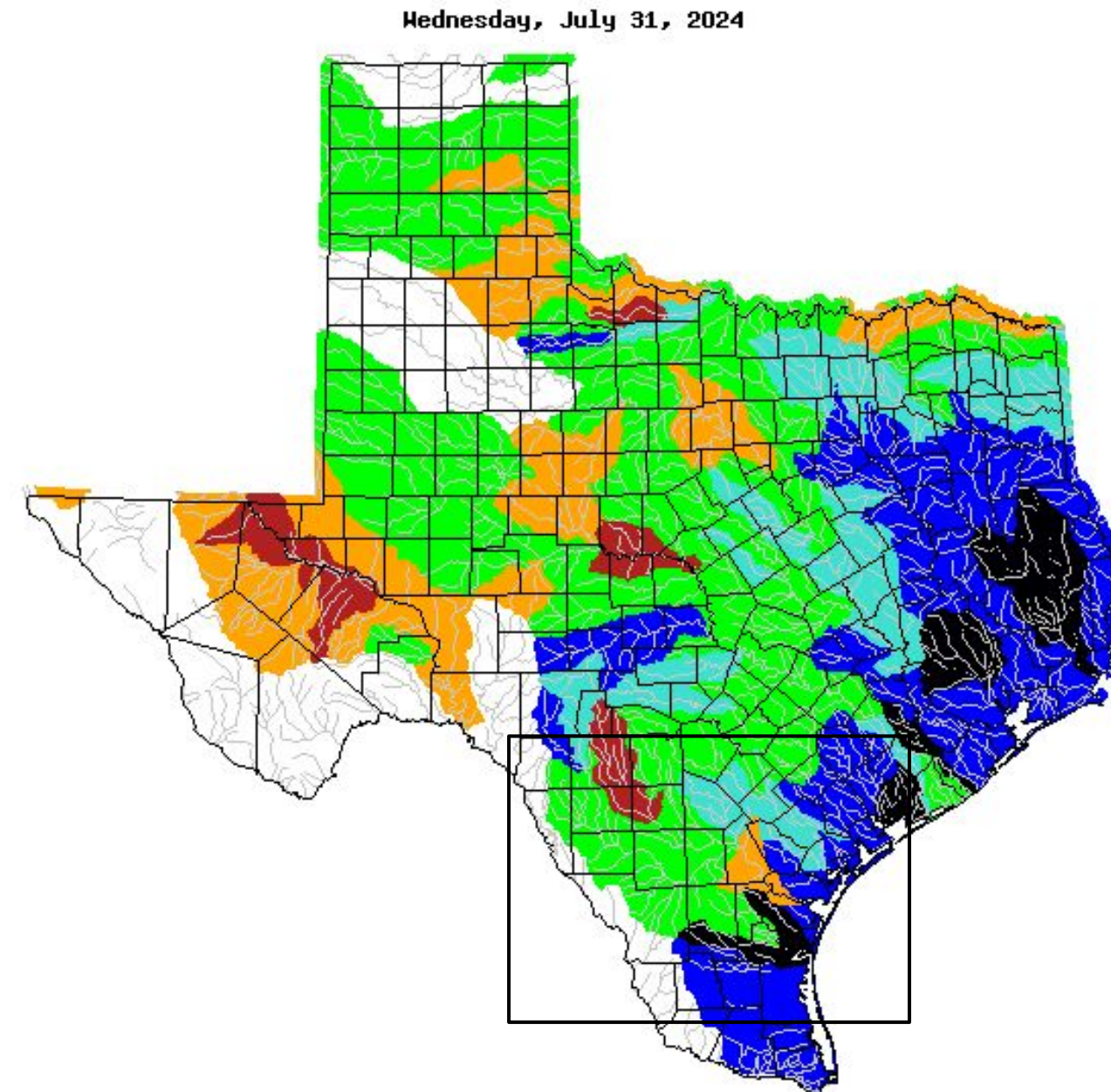


Hydrologic Conditions and Impacts

August 1, 2024
6:39 PM

USGS 7-Day Avg Streamflow | Texas Reservoirs

- Coastal Bend: Much above normal to high flows
- Brush Country: Normal flows



Explanation - Percentile classes							
Low	<10	10-24	25-75	76-90	>90	High	No Data
	Much below normal	Below normal	Normal	Above normal	Much above normal		

Reservoir	Pool Elevation (ft)	Current Elevation (ft)
Choke Canyon.	220.5	190.6
Lake Corpus Christi	94.0	84.9
Lake Texana	44.0	43.9
Coleta Creek	98.0	97.7
Canyon Lake	909.0	885.9
Lake Amistad	1117.0	1048.8

Reservoir values as of Aug 1, 2024





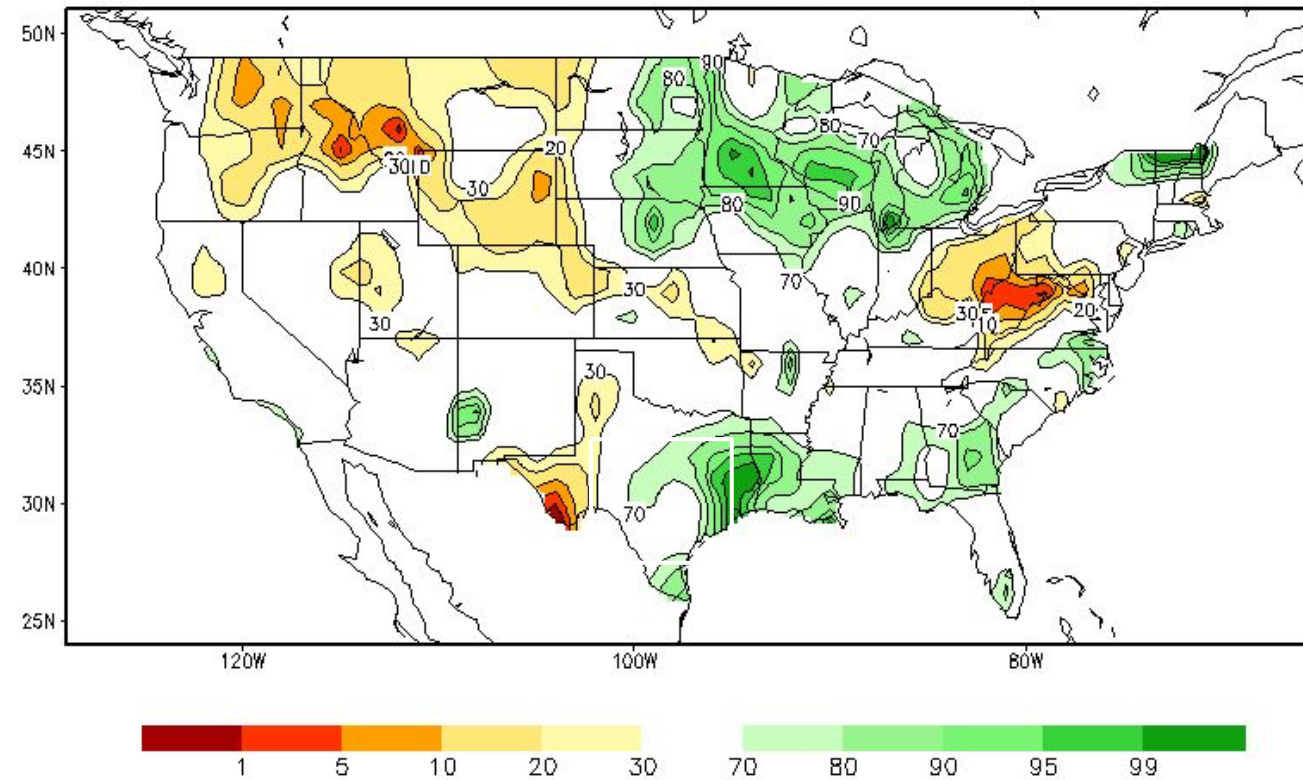
Agricultural Impacts

August 1, 2024
6:39 PM

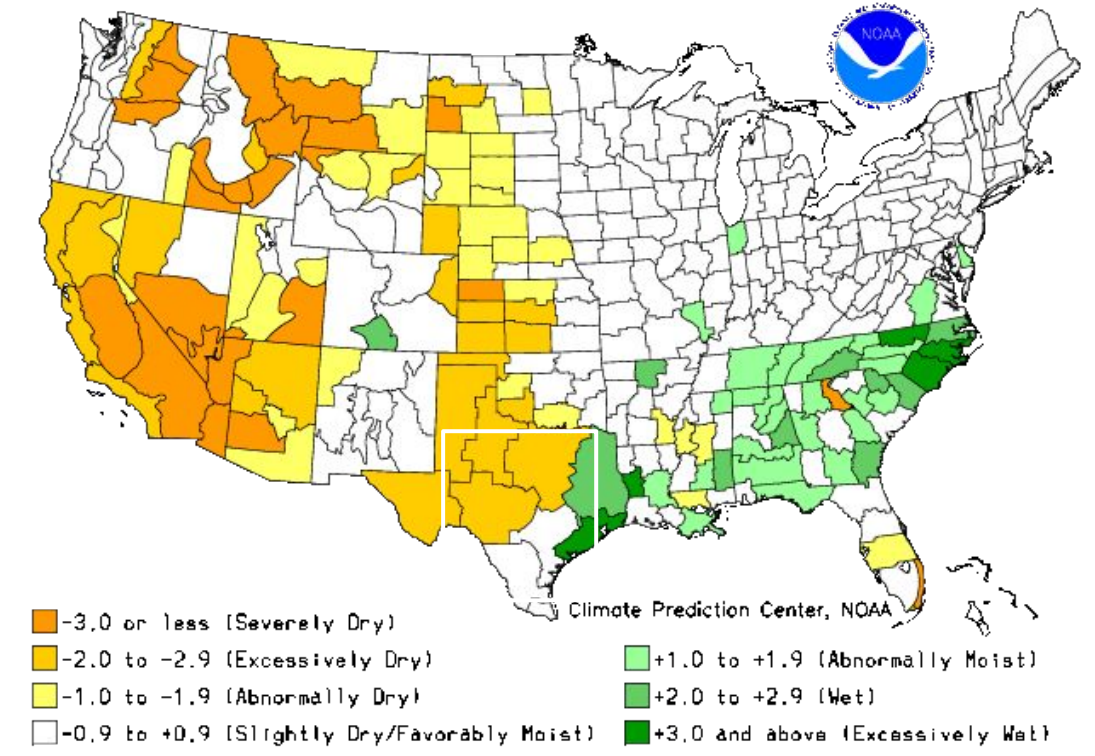
[Soil Moisture](#) | [Crop Moisture](#)

- Soil moisture is now above normal across the Coastal Bend

Calculated Soil Moisture Ranking Percentile
JUL 31, 2024



Crop Moisture Index by Division
Weekly Value for Period Ending JUL 27, 2024
Short Term Need vs. Available Water in a Shallow Soil Profile





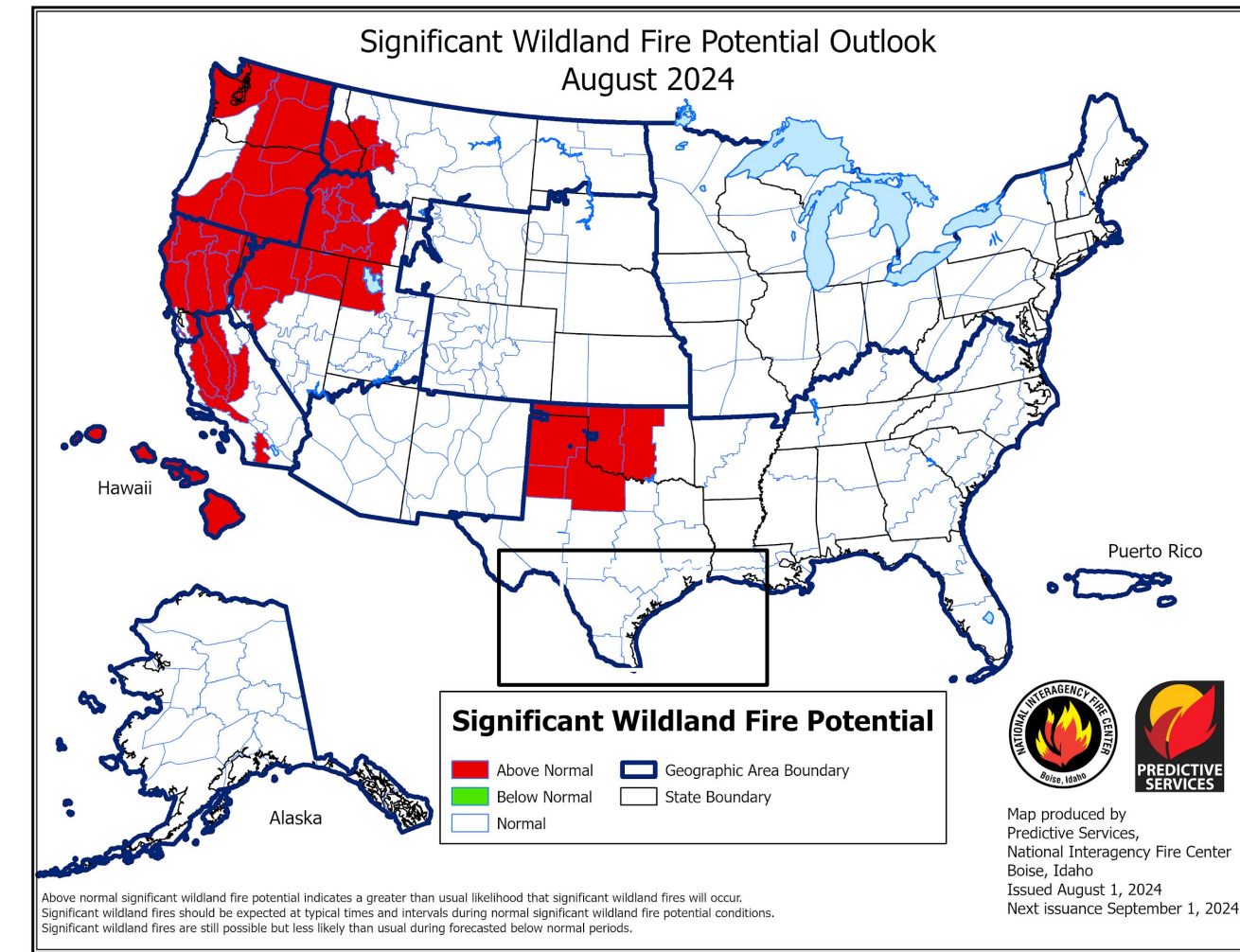
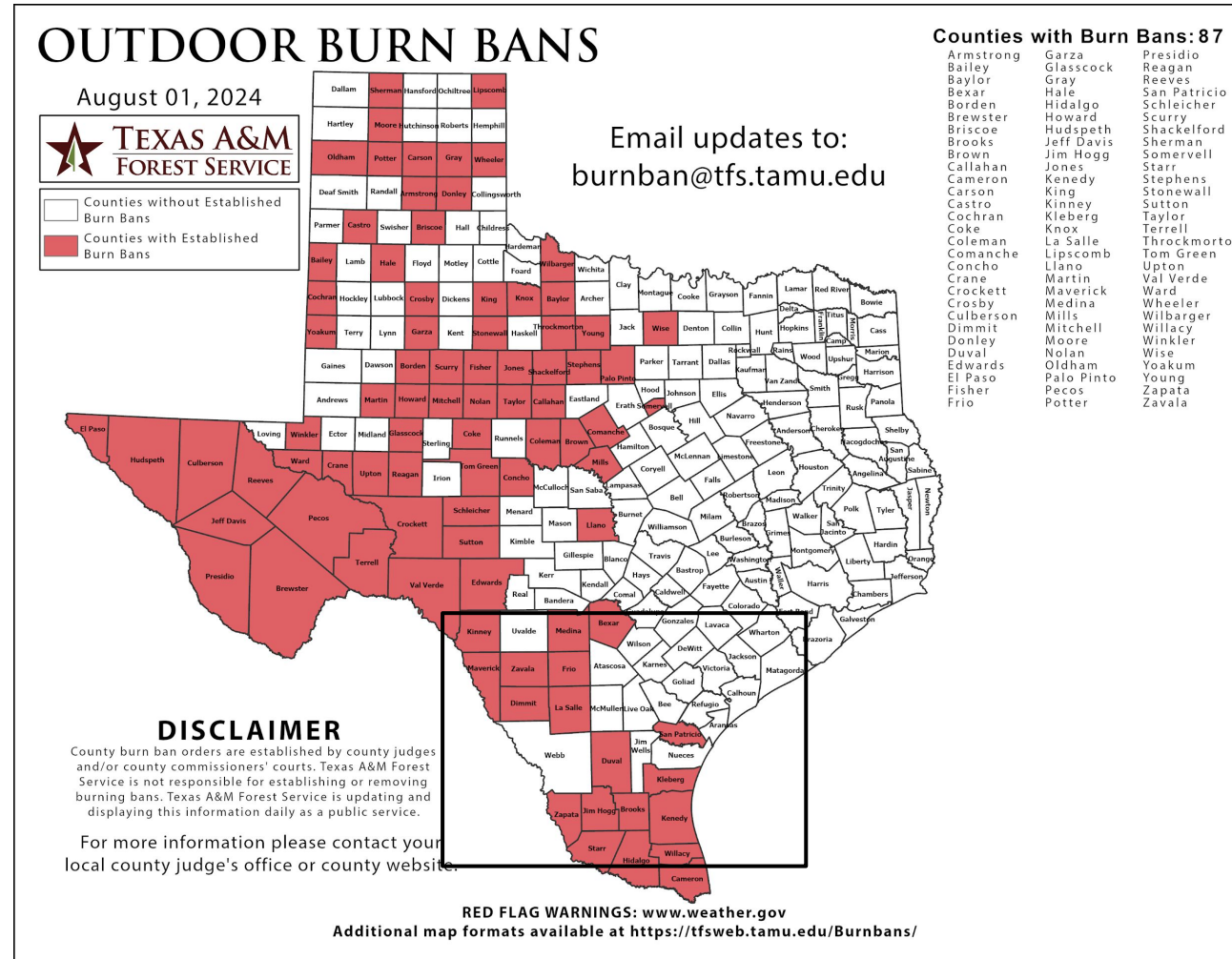
Fire Hazard Impacts

August 1, 2024
6:39 PM

Link to [Wildfire Potential Outlooks from the National Interagency Coordination Center](#).

- Burn Bans in place across portions of South Texas
- Normal significant wildfire potential through August

Latest TX Burn Ban map available [here](#).





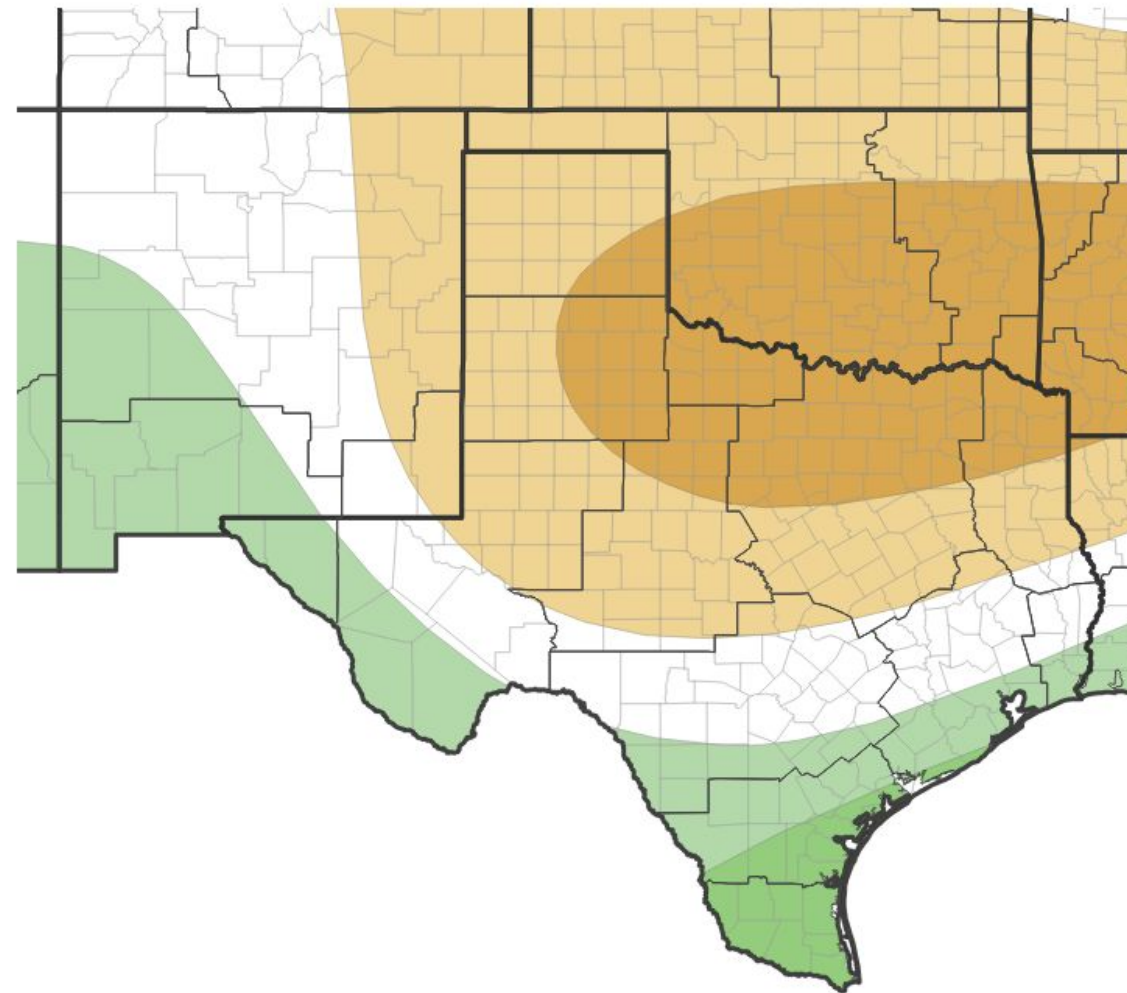
Long-Range Outlooks

August 1, 2024
6:39 PM

The latest monthly and seasonal outlooks can be found on the [CPC homepage](#)

- Slightly above normal chances for precipitation through August
- Equal chances for above or below normal temperatures for August

Monthly Precipitation Outlook



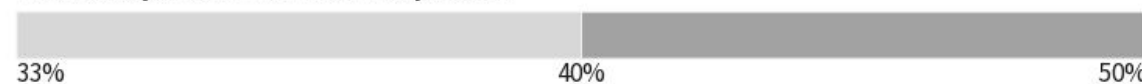
Probability of Below-Normal Precipitation



Probability of Above-Normal Precipitation



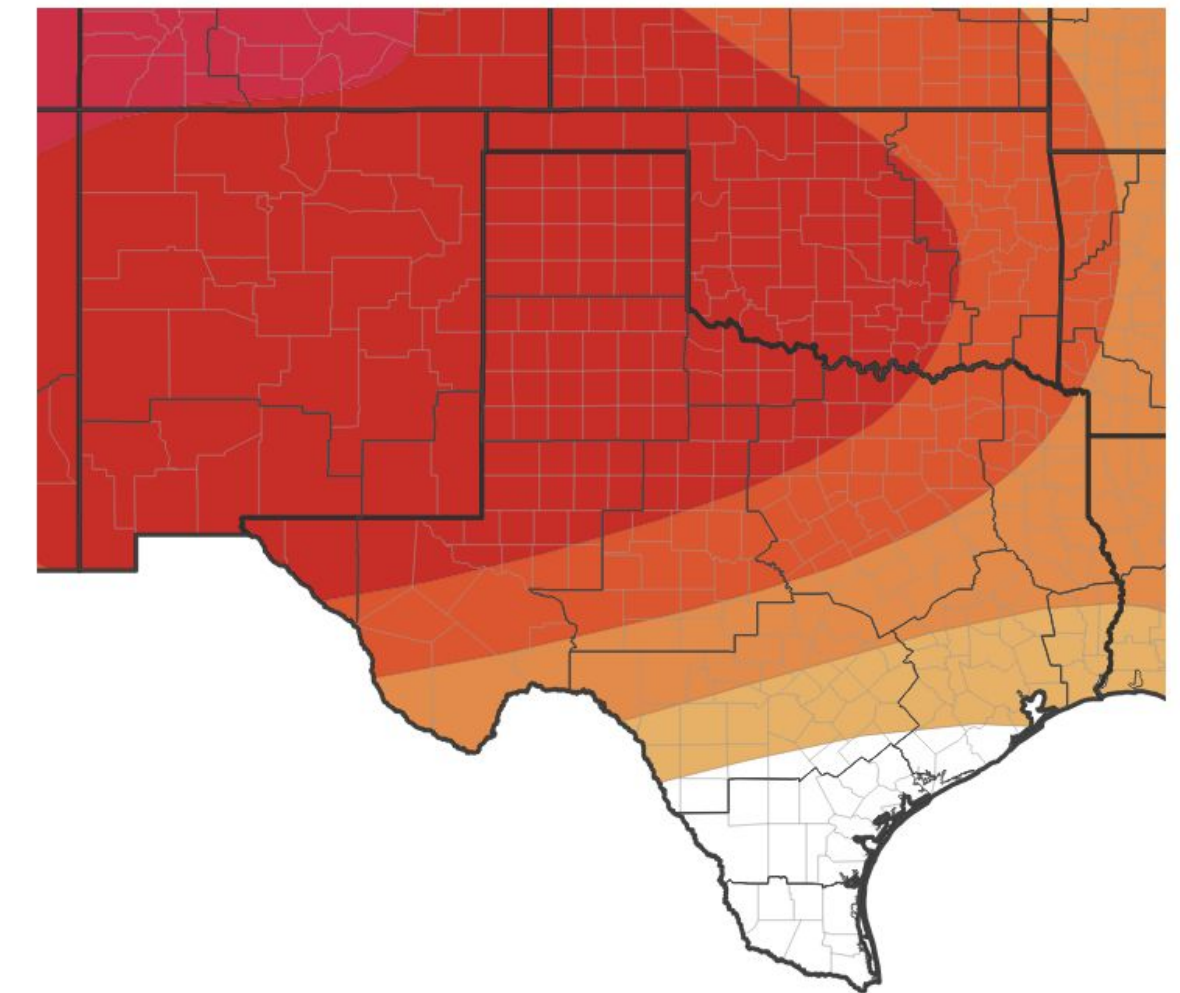
Probability of Near-Normal Precipitation



Source(s): Climate Prediction Center; image courtesy of Drought.gov

Last Updated: 07/31/24

Monthly Temperature Outlook



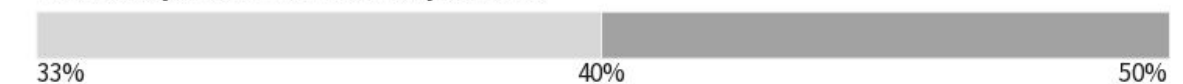
Probability of Below-Normal Temperatures



Probability of Above-Normal Temperatures



Probability of Near-Normal Temperatures



Source(s): Climate Prediction Center; image courtesy of Drought.gov

Last Updated: 07/31/24





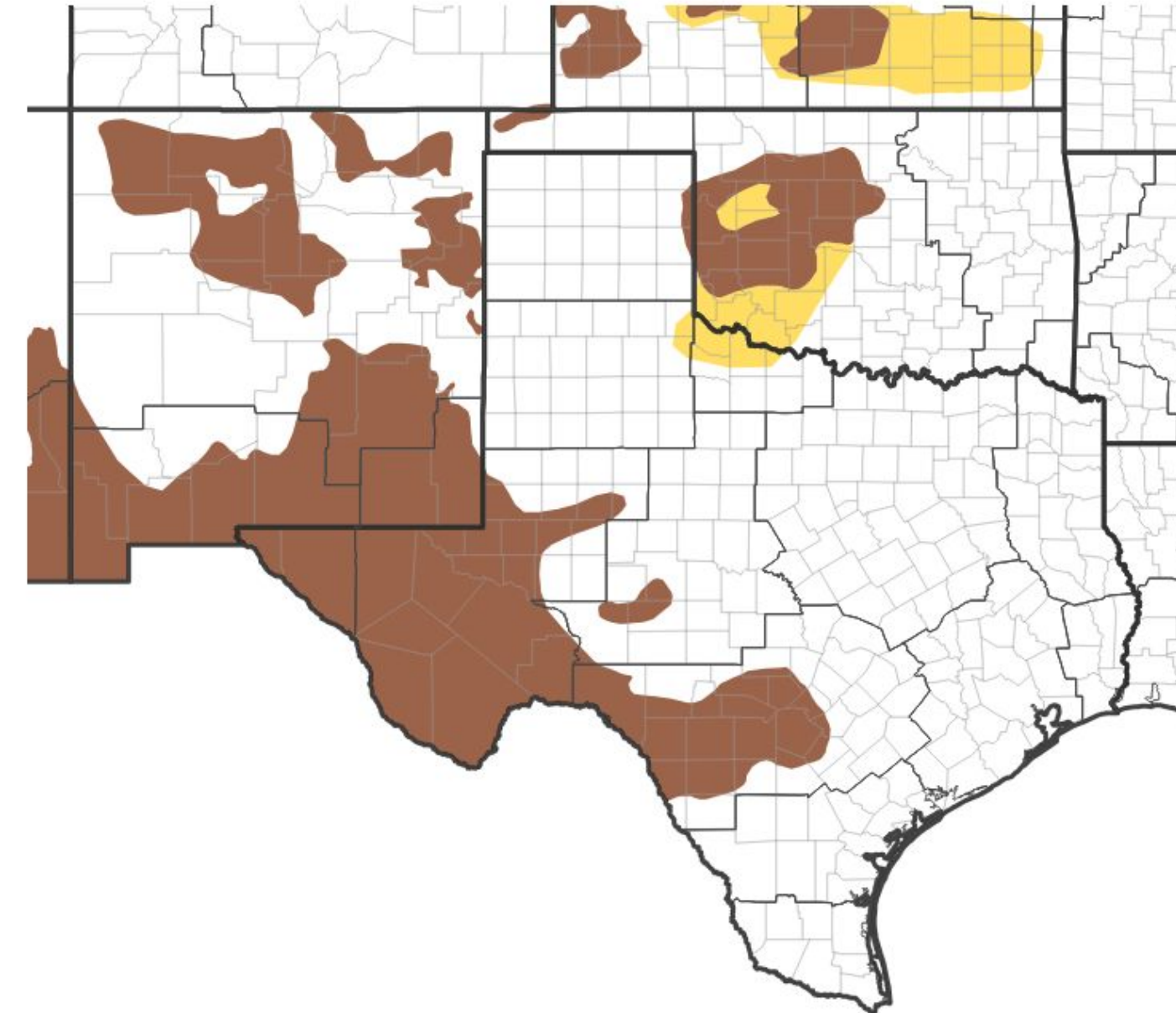
Drought Outlook

August 1, 2024
6:39 PM

The latest monthly and seasonal drought outlooks can be found on the [CPC homepage](#)

- Drought conditions are not currently in place and are not expected to develop

1-Month Drought Outlook



Drought Is Predicted To...



Source(s): Climate Prediction Center; image courtesy of Drought.gov

Last Updated: 07/31/24

