



— BUREAU OF —  
RECLAMATION

# Colorado River Basin: System Status Update

NWS Climate Services Webinar

August 8, 2023



# Overview of the Colorado River Basin

- Operation is governed by the “Law of the River”
- 16.5 million acre-feet of water use allocated annually
- 60 million acre-feet of storage capacity
- 4,200 Megawatts of installed hydropower capacity
- 70% of all use is for agriculture
- 40% the water is exported outside of the Basin
- Aside from the pulse flow event, the river hasn't made it to the delta in decades



# Colorado River – Current Conditions

(as of August 7, 2023)



Lake Powell near Glen Canyon Dam



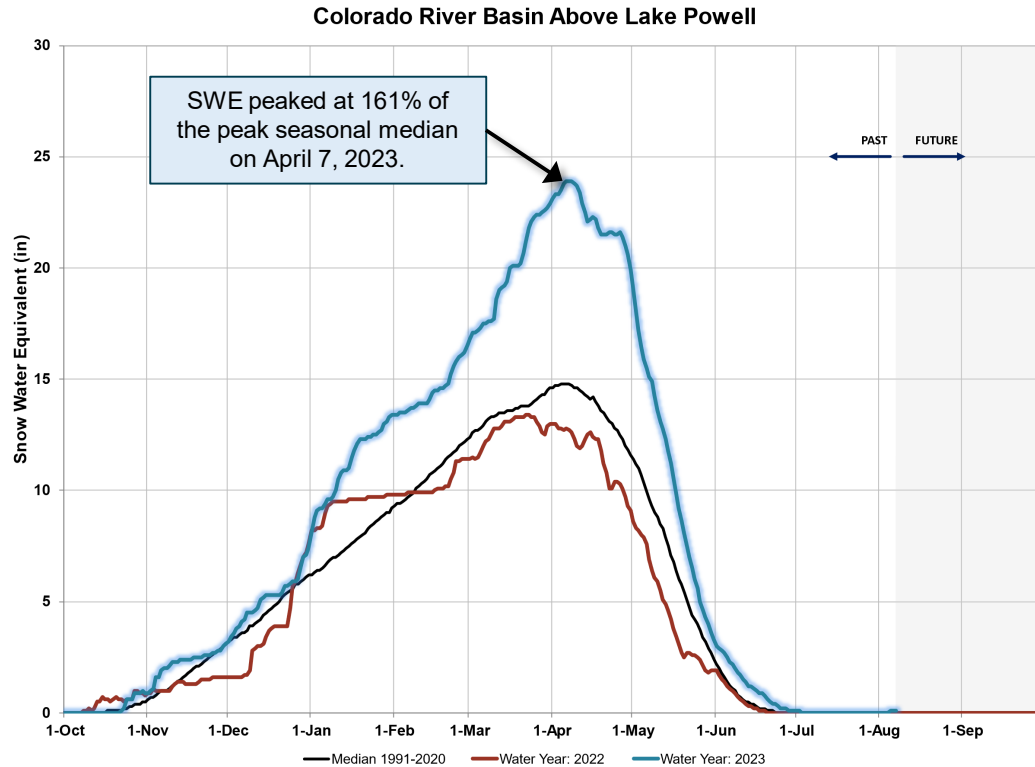
Lake Mead near Hoover Dam

- Driest 23-year period on record (2000-2022)
- Flows in 2020-2022 were 37% to 63% of average
- Lake Powell and Lake Mead are near historically low water levels
  - Lake Powell current elevation is 3,579 feet at 39% of capacity
  - Lake Mead current elevation is 1,062 feet at 33% of capacity



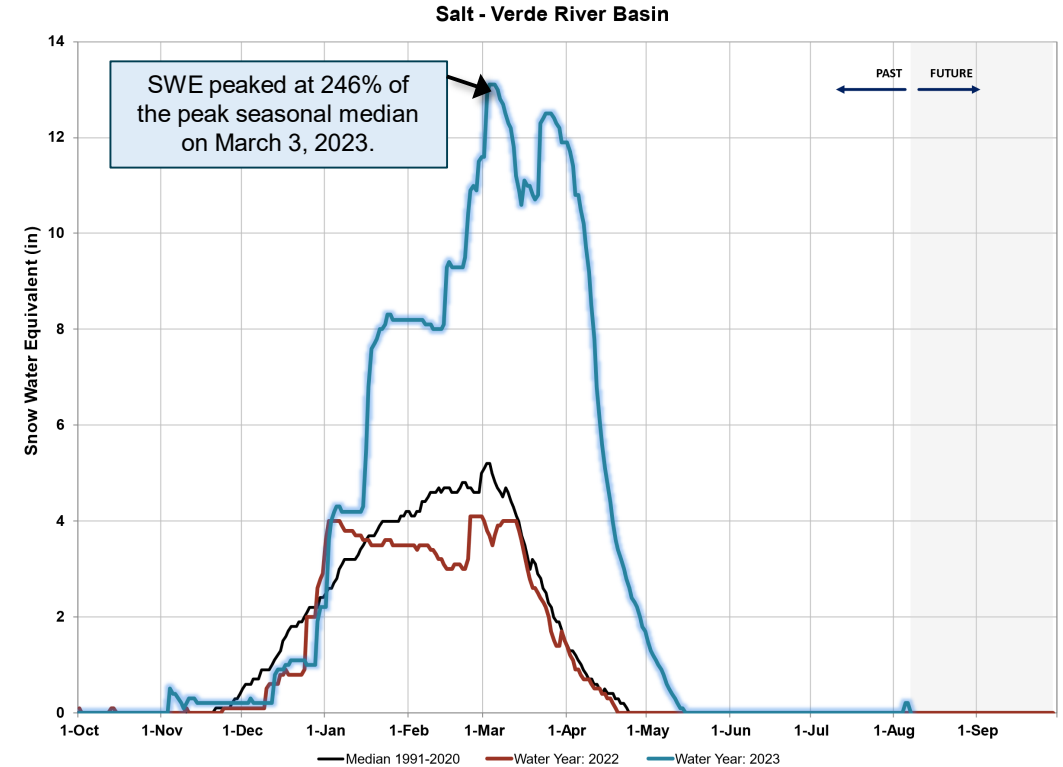
# Water Year 2023 Precipitation & Snowpack<sup>1</sup> as of August 7, 2023

## Upper Colorado River Basin



**Precipitation - 116%**  
**Basin Snowpack - NA%**

## Salt - Verde River Basin



**Precipitation - 134%**  
**Basin Snowpack - NA%**

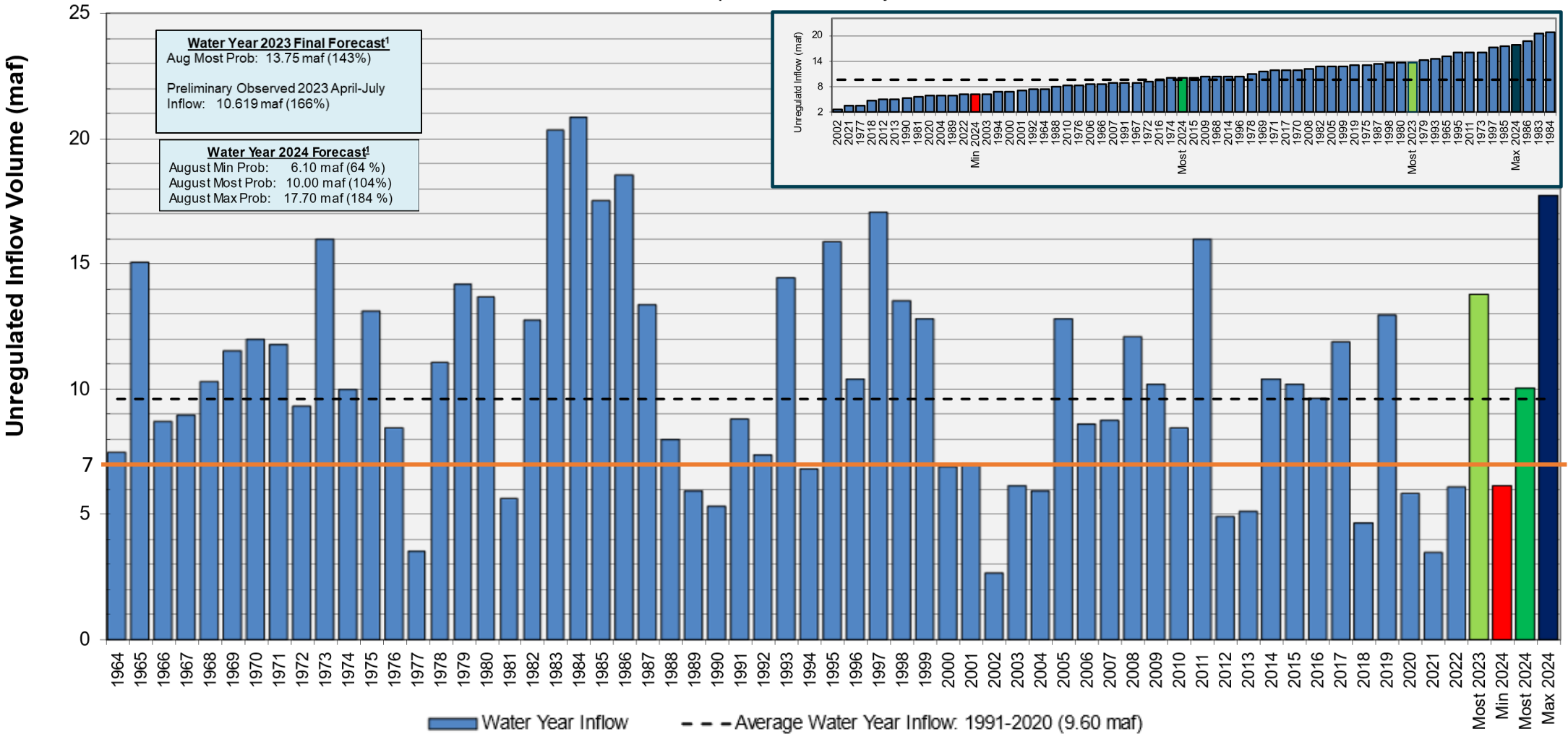


<sup>1</sup> Percent of normal precipitation is based on an arithmetic mean, or average; percent of normal snowpack is based on the median value for a given date. Water Year statistics are based on the 30-year period from 1991-2020.

# Lake Powell Water Year Unregulated Inflow

Forecast as of August 1, 2023

Comparison with History

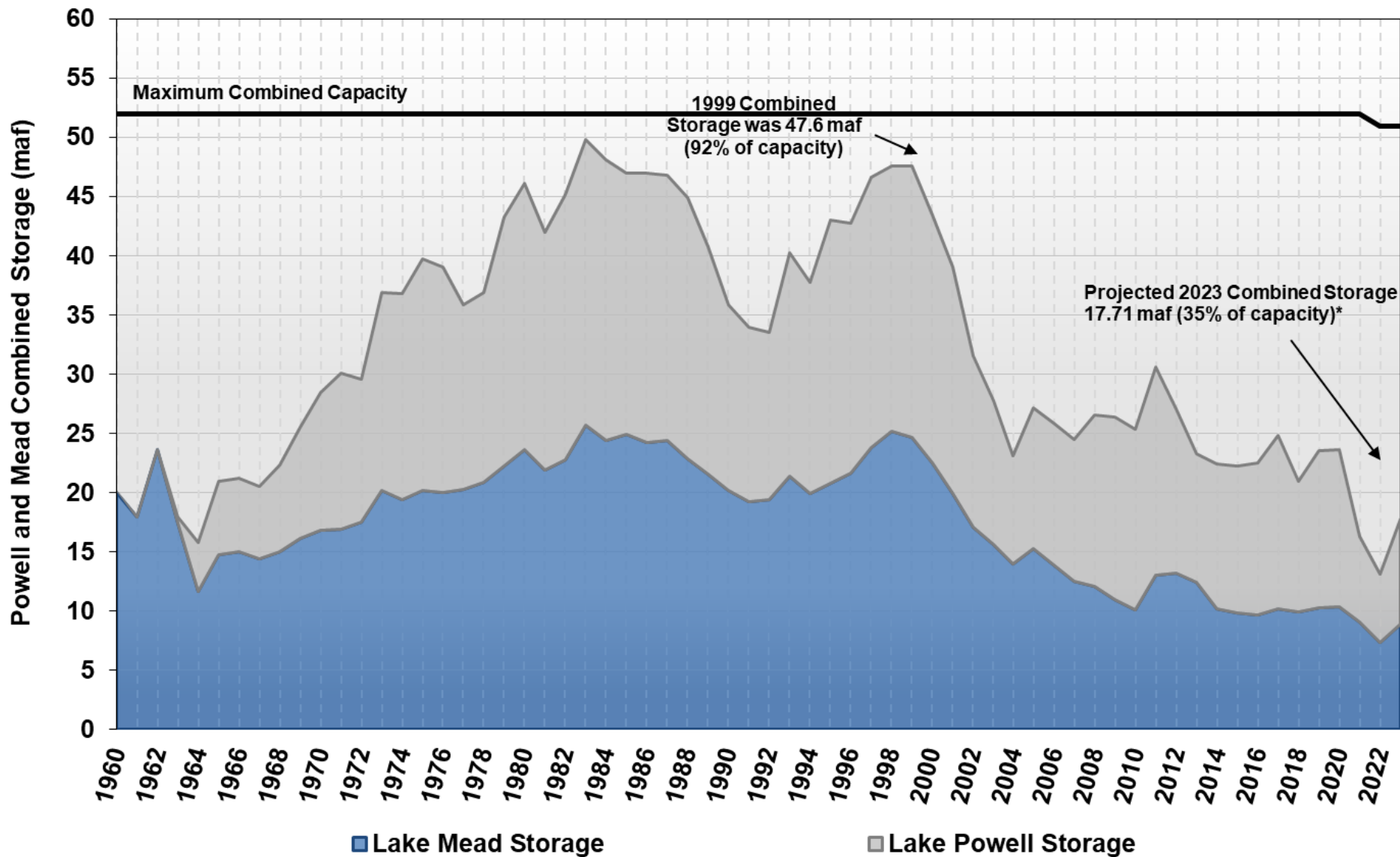


<sup>1</sup>Water Year statistics are based on the 30-year period of record from 1991-2020.



# Lake Powell and Lake Mead End of Water Year Storage

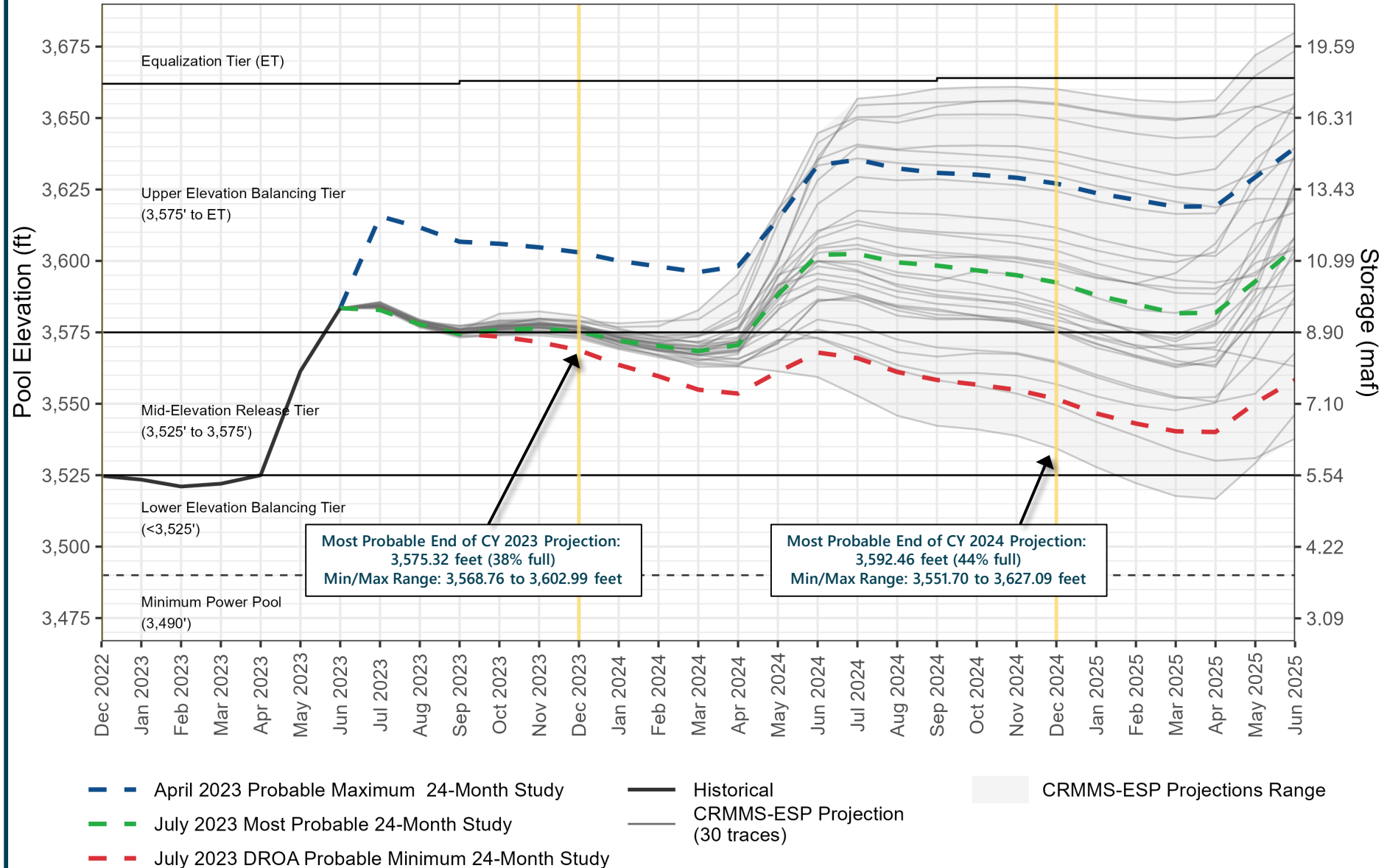
Water Years 1960 through 2023\*



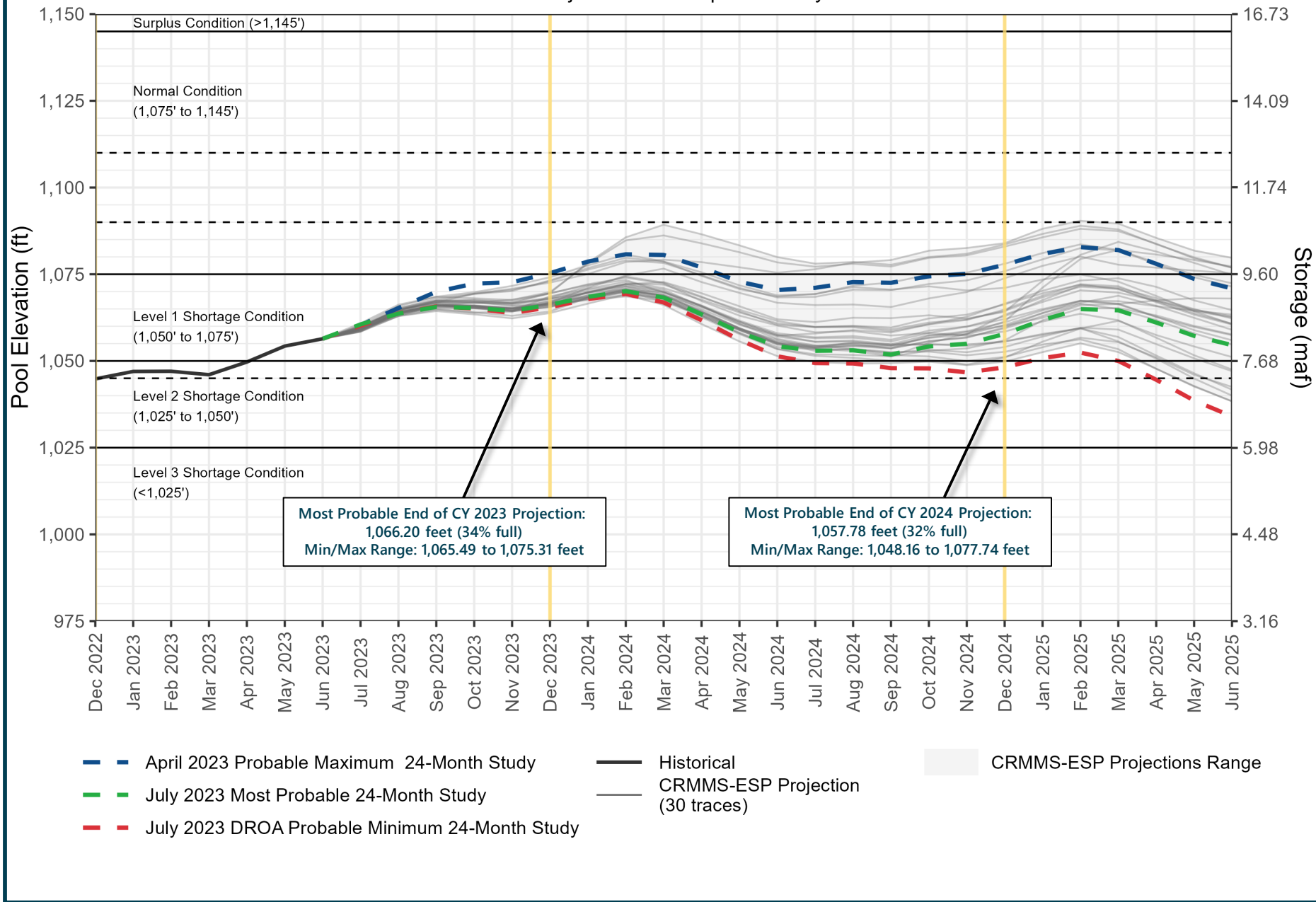
\*Storage value for the end of WY 2023 is based on the July 2023 24-Month Study projection.



## Lake Powell End-of-Month Elevations CRMMS Projections from April and July 2023



## Lake Mead End-of-Month Elevations CRMMS Projections from April and July 2023





Questions?

More information:

[https://www.usbr.gov/  
lc/riverops.html](https://www.usbr.gov/lc/riverops.html)

Meghan Thiemann

[mthiemann@usbr.gov](mailto:mthiemann@usbr.gov)

