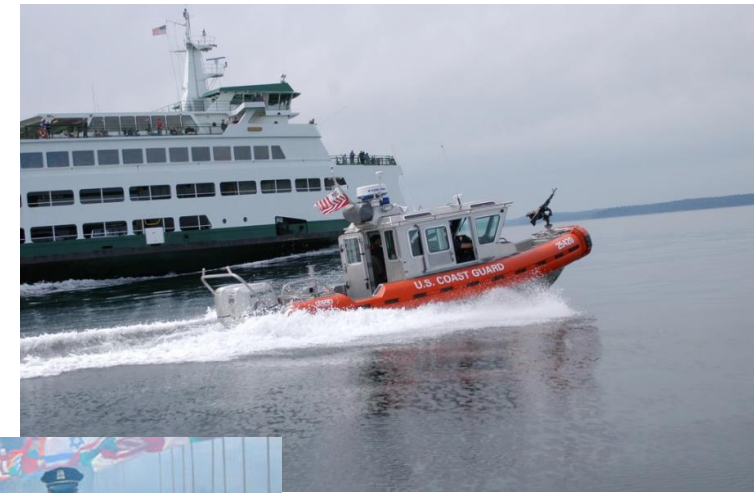


Leading In Crisis

Ms. Heidi A. Funkhouser, USCG

Impactful ICS Experiences...

- M/V NEW CARISSA
- WA STATE FERRIES SECURITY SURGE
- HURRICANE IRENE
- HURRICANE SANDY
- BOSTON BOMBING
- HURRICANE MATTHEW
- HURRICANE IRMA
- KINGS BAY TORNADO STRIKE 2018
- HURRICANE DORIAN
- HURRICANE SALLY
- DOD/DHA COVID-19 VACCINE DISTRIBUTION
- OPERATION ALLIES WELCOME
- M/V GOLDEN RAY DEMOB
- FRANCIS SCOTT KEY BRIDGE





**Coast Guard Incident Management Assist Team
(CG-IMAT)**





3 Capabilities



- **Response Assistance**
- **Exercise Assistance**
- Training Assistance



Hurricane
SALLY



USCG Sector Long Island
Sound IMT Workshop





Response Assistance CG-IMAT Qualifications



Command

- Incident Commander (IC)

Command Staff

- Safety Officer (SOFR)
- Liaison Officer (LOFR)
- Public Information Officer (PIO)
- Agency Representative (AREP)

Planning Section

- Planning Section Chief (PSC)
- Situation Unit Leader (SITL)
- Resource Unit Leader (RESL)
- Demobilization Unit Leader (DMOB)

Operations Section

- Operations Section Chief (OSC)
- Branch Director (Afloat/Ashore)
- Air Operations Branch Director (AOBD)

Logistics Section

- Logistic Section Chief (LSC)
- Support Branch Director (SUBD)
- Supply Unit Leader (SPUL)
- Communications Unit Leader (COML)

Finance Admin Section

- Finance Section Chief (FSC)





Exercise Assistance

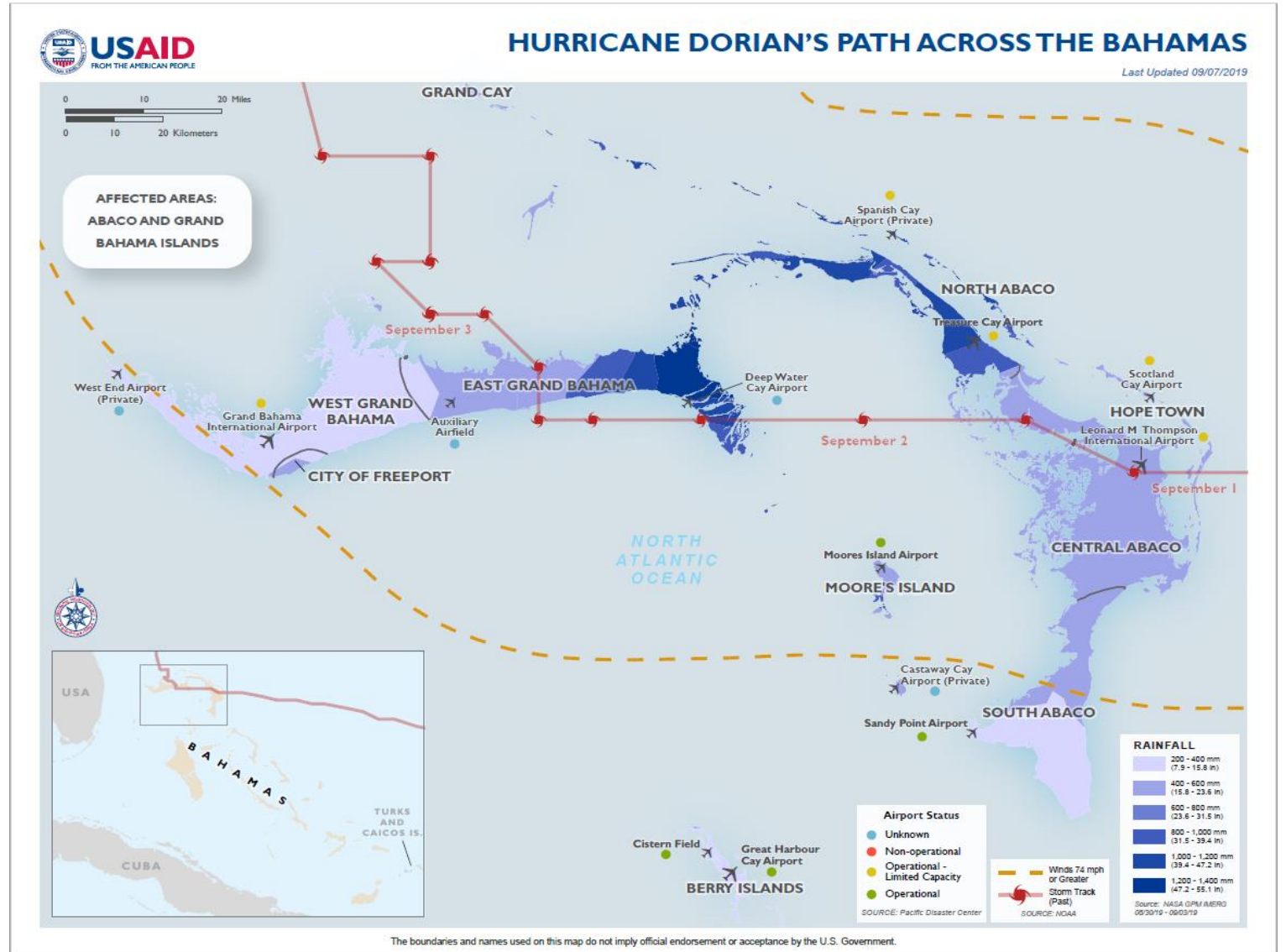


- Support national, regional, and local exercises
- Able to provide:
 - Subject Matter Experts – ICS Unit Level PQS Support
 - Evaluators / Controllers
 - Participants – Coaching or fill positions



Hurricane DORIAN

September 1st, 2019

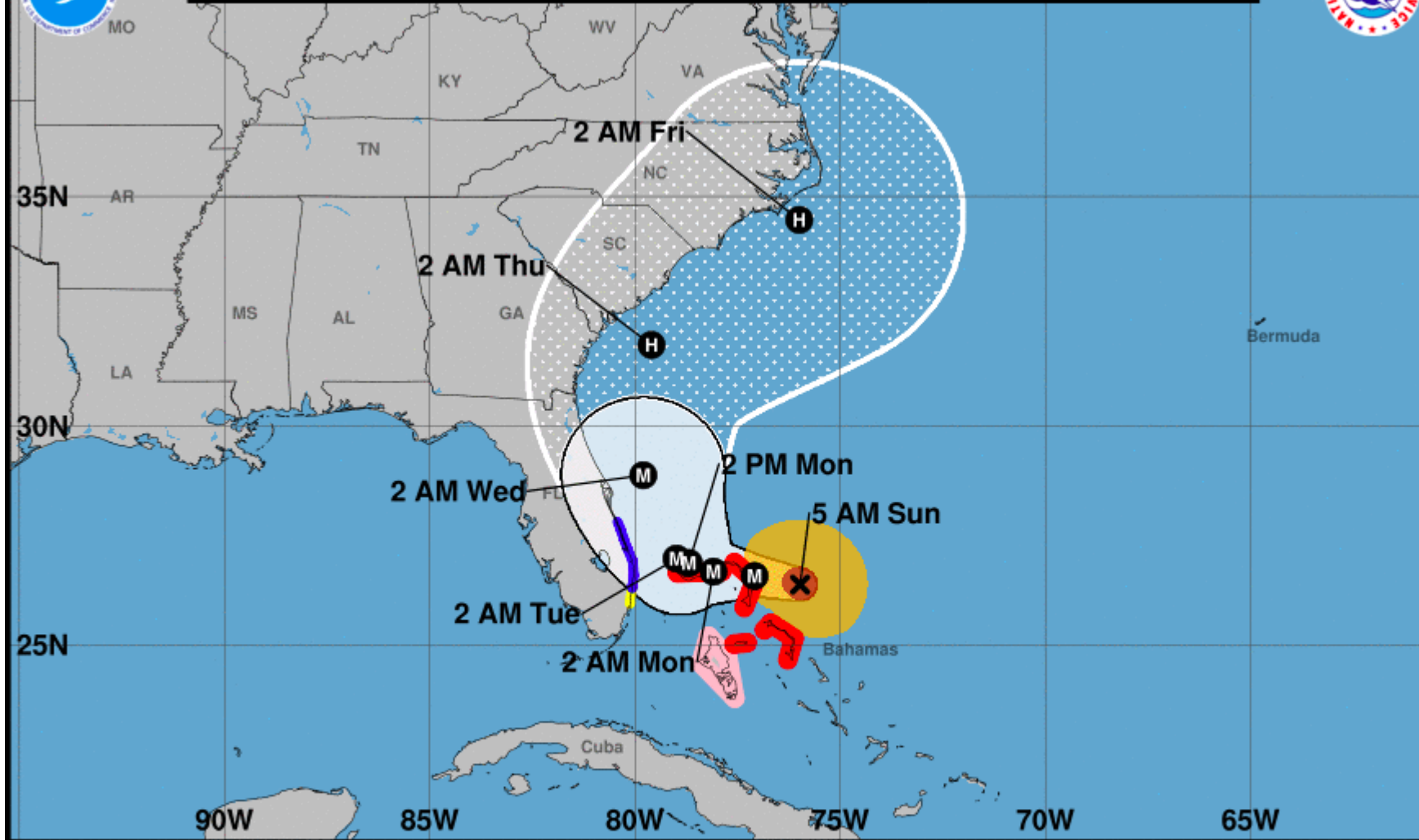


The cone of uncertainty ...





Note: The cone contains the probable path of the storm center but does not show the size of the storm. Hazardous conditions can occur outside of the cone.



Hurricane Dorian
 Sunday September 01, 2019
 5 AM EDT Advisory 32
 NWS National Hurricane Center

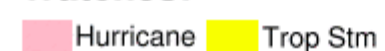
Current information: x
 Center location 26.4 N 76.0 W
 Maximum sustained wind 150 mph
 Movement W at 8 mph

Forecast positions:
 ● Tropical Cyclone ○ Post/Potential TC
 Sustained winds: D < 39 mph
 S 39-73 mph H 74-110 mph M > 110 mph

Potential track area:



Watches:



Warnings:



Current wind extent:



First Stop: Sector Jacksonville Incident Management Team (IMT)

Key Initial USCG Actions:

- **Pre-Storm Preparations**
- **Port Coordination**
- **Resource Staging**
- **Search and Rescue**

What does Port Coordination Look like?

- **Port Conditions (Whiskey, Xray, Yankee, Zulu)**
- **Port Coordination Calls**
- **Maritime Transportation System Recovery**
- **Post-Storm Actions**

MTSRU Functions

- Coordinate and facilitate port recovery activities
- Track and document the MTS and critical recovery pathways via the Common Access Reporting Tool (CART)
- Provide stakeholder communication within the Incident/Unified Command
- Provide recommendations of priorities for cargo flow resumption and vessel movement
- Identify long-term recovery issues and needs.
- Resume safe, secure maritime commerce after a port disruption

Second Stop: Bahamas Incident Command Post, Miami, FL





Final Stop: Freeport, Grand Bahama Island

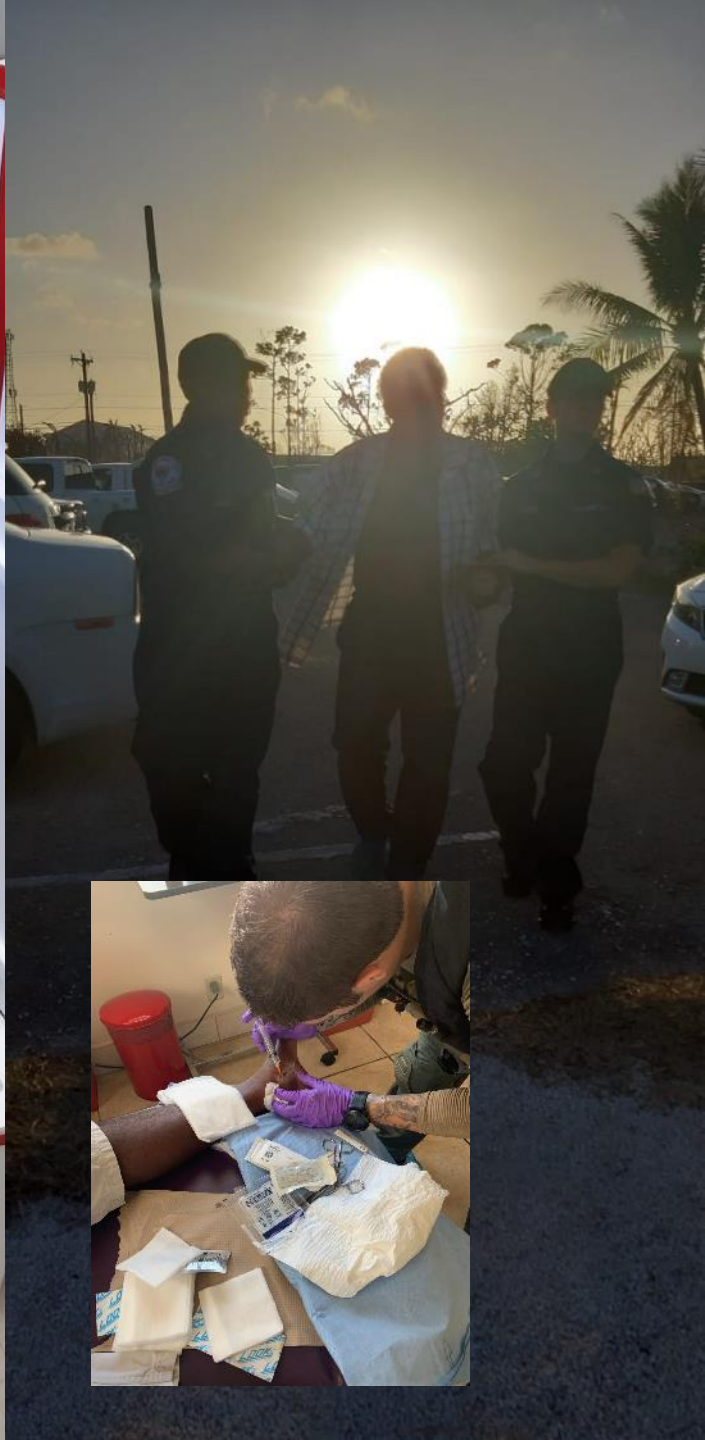


Senator Kay Forbes-Smith





Before and After DORIAN



Operation Relief Saturday – Take 1



Truck Entrance

Distribution Centers

Regional Services

Barber

Independence Park

Bouncy Houses

Operat'n BBQ

BTC

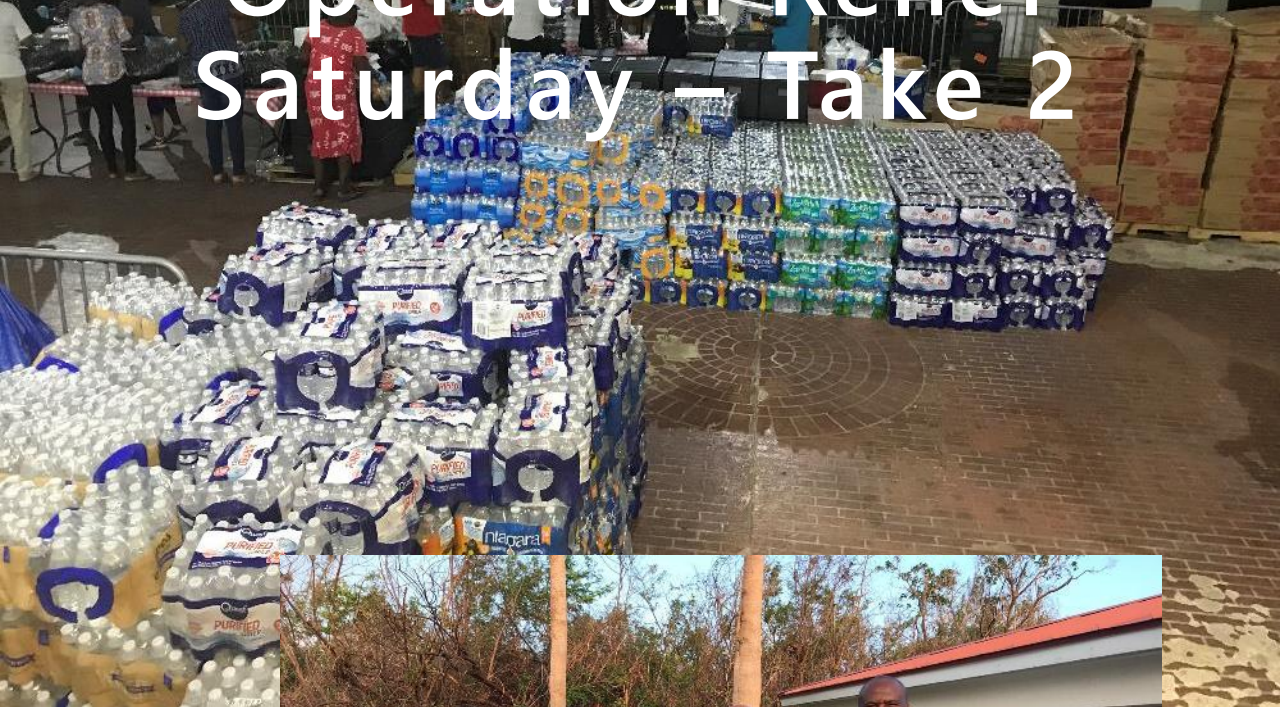
Aliv

Scientology

Ice Cream Truck



Operation Relief Saturday – Take 2







OPERATION RELIEF SATURDAY INDEPENDENCE PARK

Freeport, Grand Bahama

NOON TO 6:00PM

SATURDAY

SEPTEMBER 21ST, 2019

ENJOY

HURRICANE RELIEF SUPPLIES
FREE FOOD FROM OPERATIONS RELIEF BBQ
FAMILY FUN W/ BOUNCING CASTLES & HAIRCUTS FOR KIDS

SUPPORT SERVICES AVAILABLE
Social Services/ Counselor On-site
Bahamas Customs/ Inland Revenue
Department of Labor
Bahamas Red Cross
Medical Screenings

GET FRESH SATURDAY

FREE HAIRCUTS

INDEPENDENCE PARK

Freeport, Grand Bahama

NOON TO 6:00PM

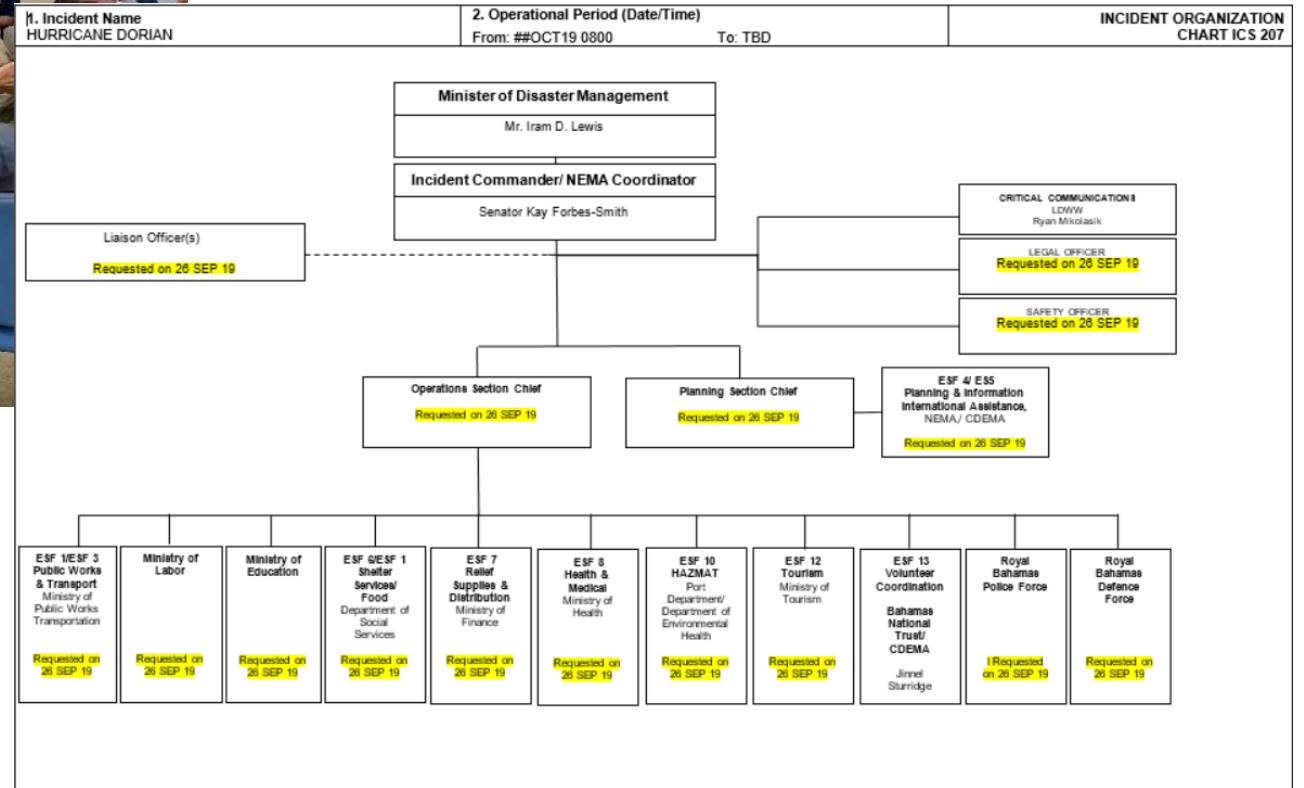
SATURDAY

SEPTEMBER 21ST, 2019

PROVIDED BY:



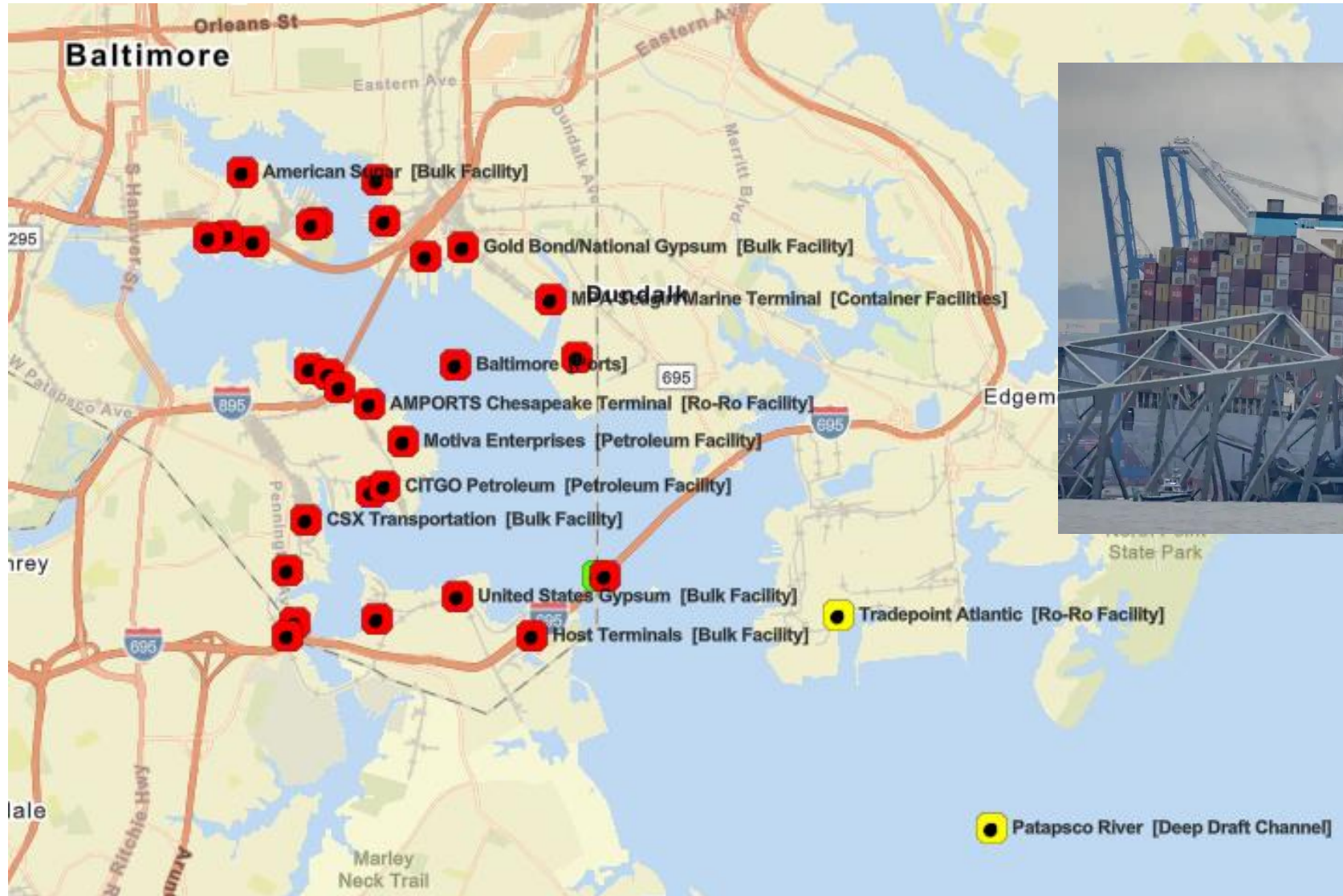
Non-Government Organization's (NGOs)



- **65+ Registered Volunteers Active in Disasters (VOAD) Organizations**
- **20+ Work Groups:**
 - Water
 - Donations
 - Muck and Gut
 - Remediation
 - Medical
 - Internet/Cellular
 - Etc.



Key Bridge Incident



Key Bridge Incident

MTSRU Timeline:

26 March – DALI Strikes Key Bridge

26 March – Safety Zone established and Incident Command Post stood up

1 April – Channel Established Sollers Point (11ft Draft)

2 April – Channel Established at Hawkins Point (14ft Draft)

19 April – Channel Established at Fort Carroll (20ft Draft)

25 April – Main Channel Open with Restrictions (38ft Draft, reduced transit speeds and two escort tugs)

8 May – Main Channel Open with Restrictions (48ft, reduced transit speeds and two escort tugs)

20 May (In theory...) – M/V Dali Towed to Seagirt Marine

“The secret of crisis management is not good vs. bad,
it’s preventing the bad from getting worse.”,

— *Andy Gilman, president & CEO of Comm Core Consulting Group*



Thank you!