

June 10th, 2021 Preliminary Severe Storm Summary

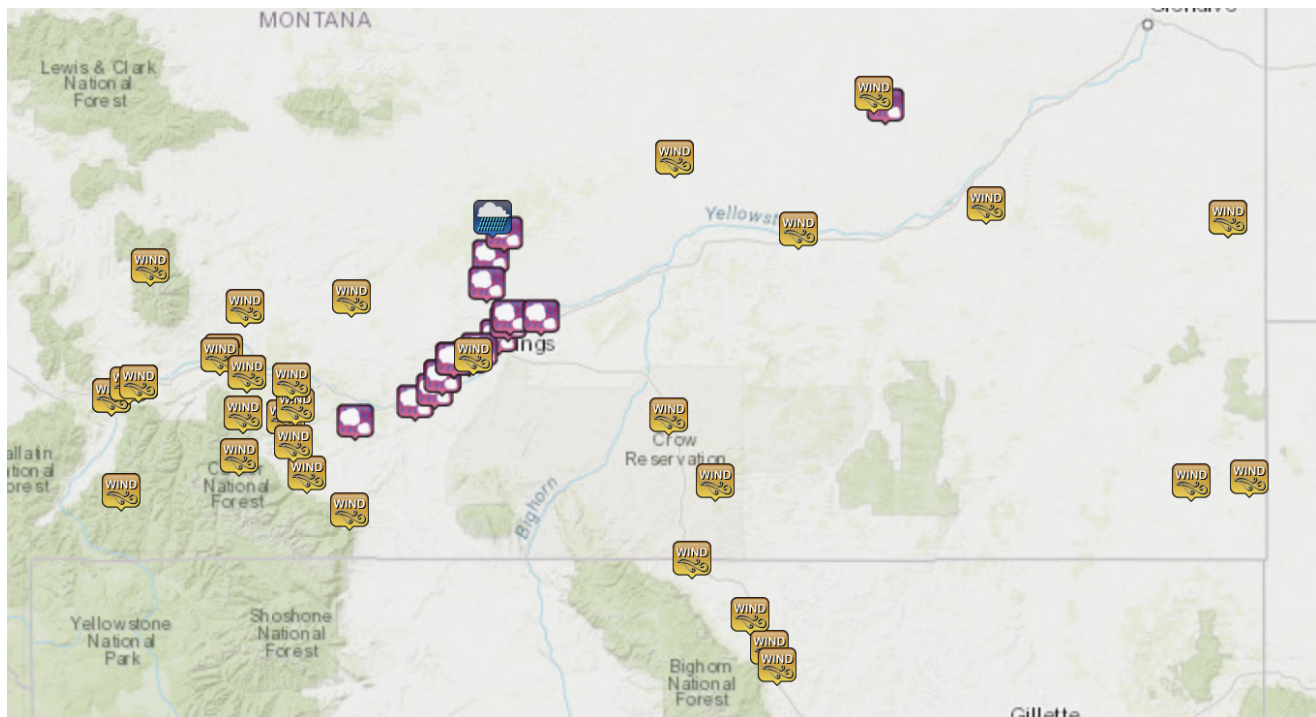
Severe storms began in NWS Billings forecasting area on the afternoon of June 10th, 2021. What was imagined to be a typical thunderstorm day turned into stronger storms than anticipated. A strong cold front would move through the Billings area allowing for stronger storms to form, dropping hail up to 2.5" and winds in excess of 75mph. Winds behind the front also became an issue for the area as 50-75 mph winds (locally higher) would continue for hours causing additional damage.

Preliminary Storm Reports

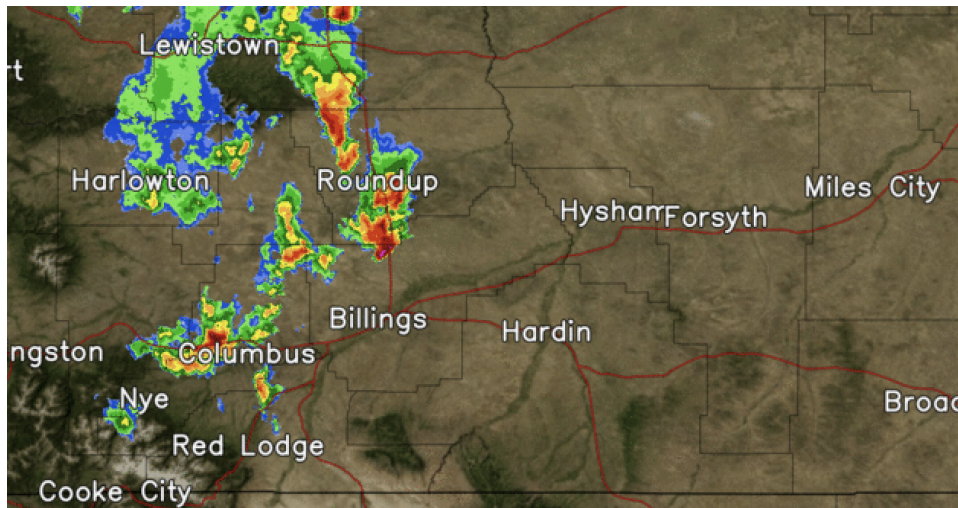
Maximum Reported Wind Gust - Thunderstorm - 55 mph
Cold Front - 75 mph

Maximum Reported Hail Size- 2.5" inches in Rosebud County

Tornadoes - No tornadoes were reported in our area



Radar

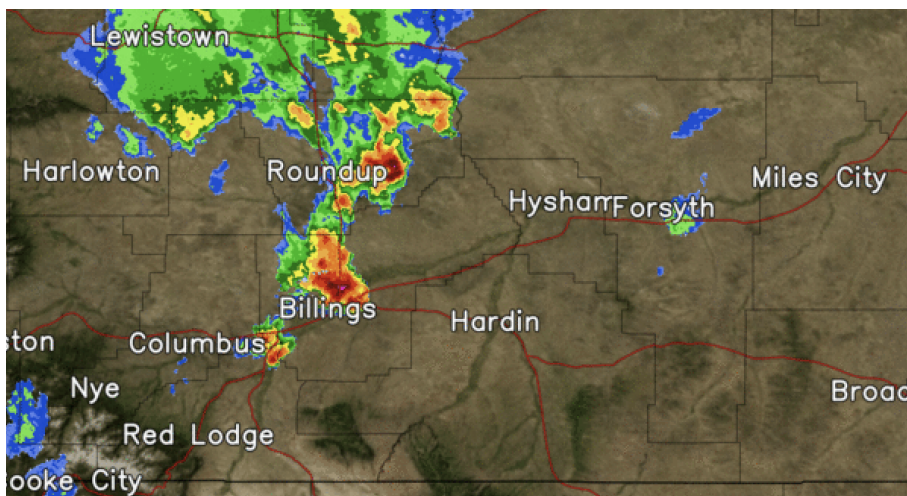
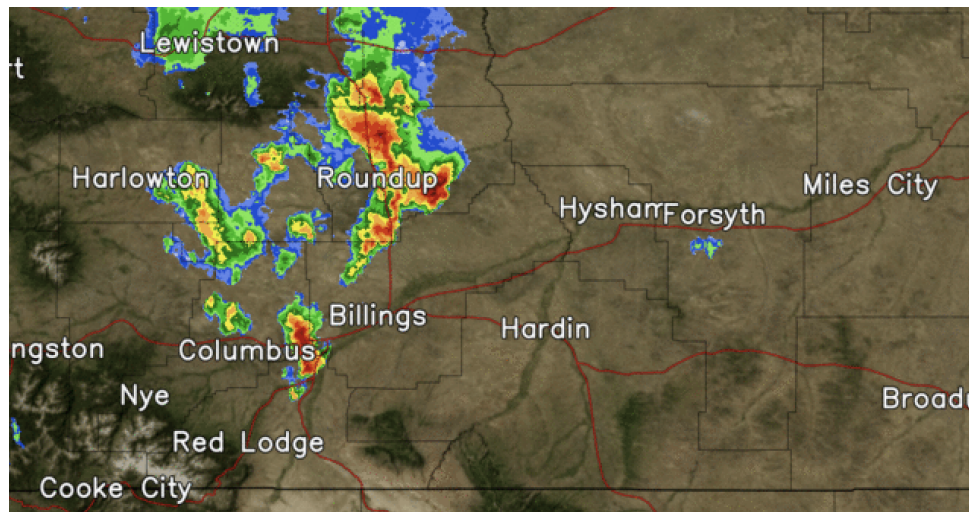


3:50 PM

The first cells began to pop south of Roundup, with 2.5" hail with an additional storm near Columbus dropping penny size hail.

4:30 PM

The storm near Roundup continued to move to the northeast while the storm that was near Columbus started to move towards Billings.

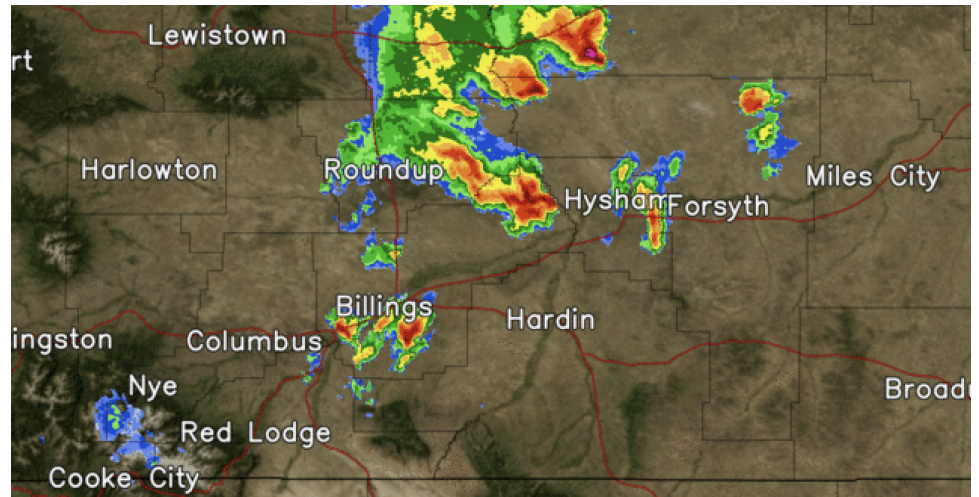


5:10 PM

The storm continued to move towards Billings, exploding over the heights and dropping 2" hail in Shephard while the Roundup storm decreased in strength.

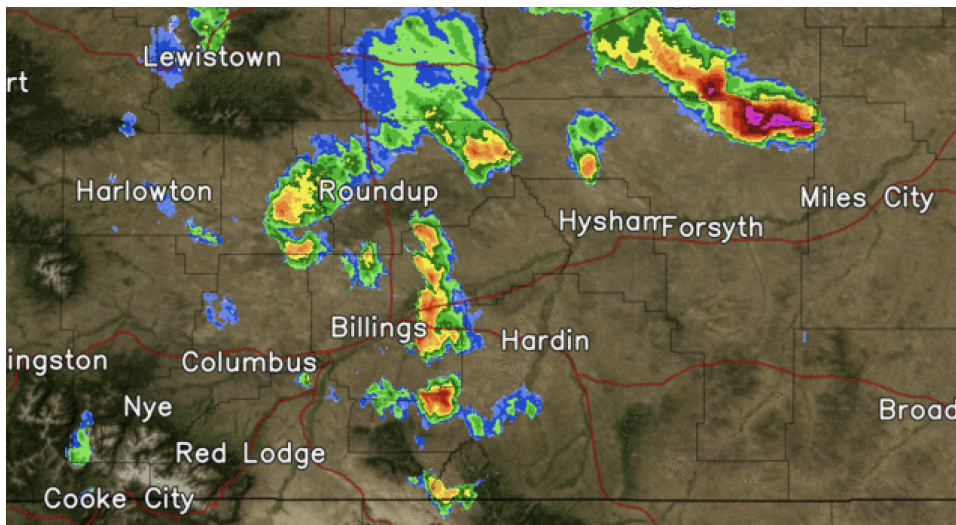
6:00 PM

A secondary storm moved over the Billings area, dropping quarter sized hail on the west end with the first storm that moved over Billings strengthening into Rosebud County.



7:10 PM

The Billings storms lost its strength while the storm, now north of Miles City, gained strength, dropping 2.5" hail.



Pictures

Hail



Photo courtesy of Anna Pegar Massic
20 miles north of Billings on Highway 87



Photo courtesy of Todd Chambers
West end in Billings



Photo courtesy of Kaleb Kurtz
4 miles north of Angela, MT

Wind

Photos courtesy of Carbon County Disaster and Emergency Services Coordinator, Cyrina Allen



South of Red Lodge

Estimated winds in excess of 80 mph.

- Numerous powerlines down
- Estimate couple hundred trees blown down and uprooted
- Downed trees caused damage to one vehicle

