

June 12, 2011 Southeast Montana Tornado

Severe thunderstorms developed across southeast Montana during the afternoon and evening of June 12, 2011. These storms produced large hail, damaging winds and one confirmed tornado.

At 535 pm, a tornado touched down 5 miles west of Albion, MT in far southeast Montana. The tornado is estimated to have remained on the ground for 15 minutes, traveling approximately 5 miles to the east northeast. The tornado produced periodic damage along a 100 yard wide path. The worst of the damage was located one mile north of Albion. A National Weather Service Cooperative Weather Observer located just north of Albion reported 50-60 trees that were snapped off, some as large as 2 feet in diameter. Two calves were also killed in this vicinity. Before the tornado lifted, 1.5 miles northeast of Albion, the tornado destroyed several grain bins, snapped off 4 power poles, flipped a semi-trailer on its side and produced minor damage to a nearby home.

The tornado has been classified as an EF-1, with estimated winds of 86-109 mph at its strongest point, one mile north of Albion.



Figure 1: Path of Tornado near Albion, MT (Extreme southeast Montana – Carter County)

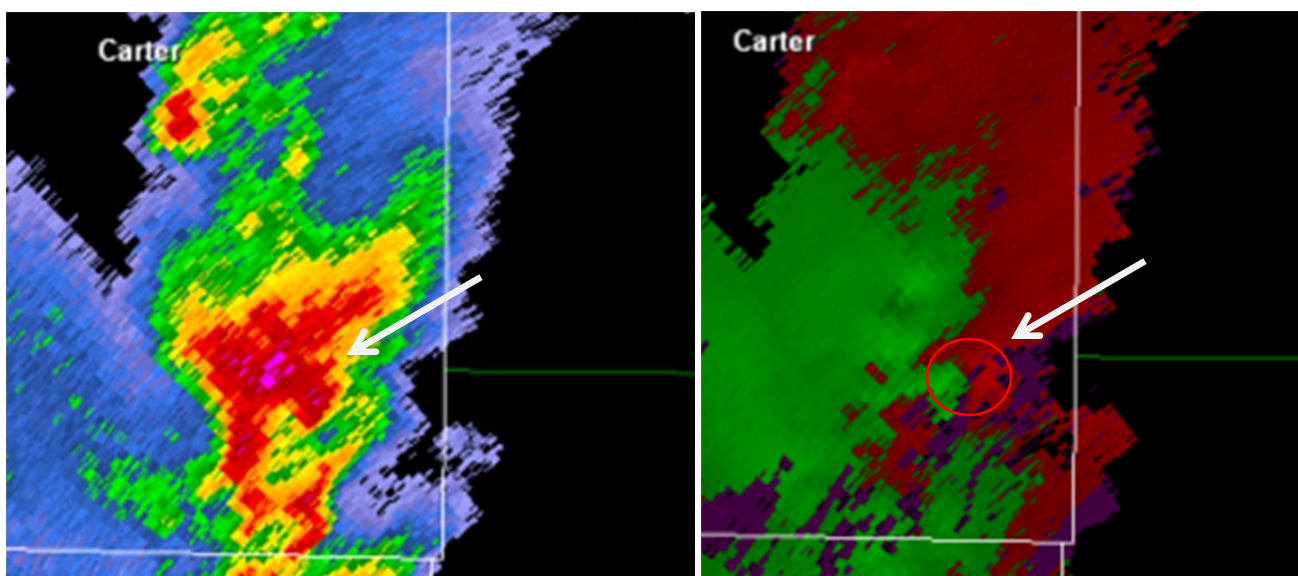


Figure 2: Radar Display of the Supercell Thunderstorm at the Time of the Tornado near Albion; Reflectivity (precipitation) on the left and wind velocity on the right (cyclonic rotation in the red circle).



Figure 3: Grain Bin Damage and Semi-Trailer tipped on its side