

Figure 1: December 2024 monthly precipitation totals observed across the NWS Burlington HSA. Totals, on average ranged from 1.5 to 3.5 inches with some slight variability.

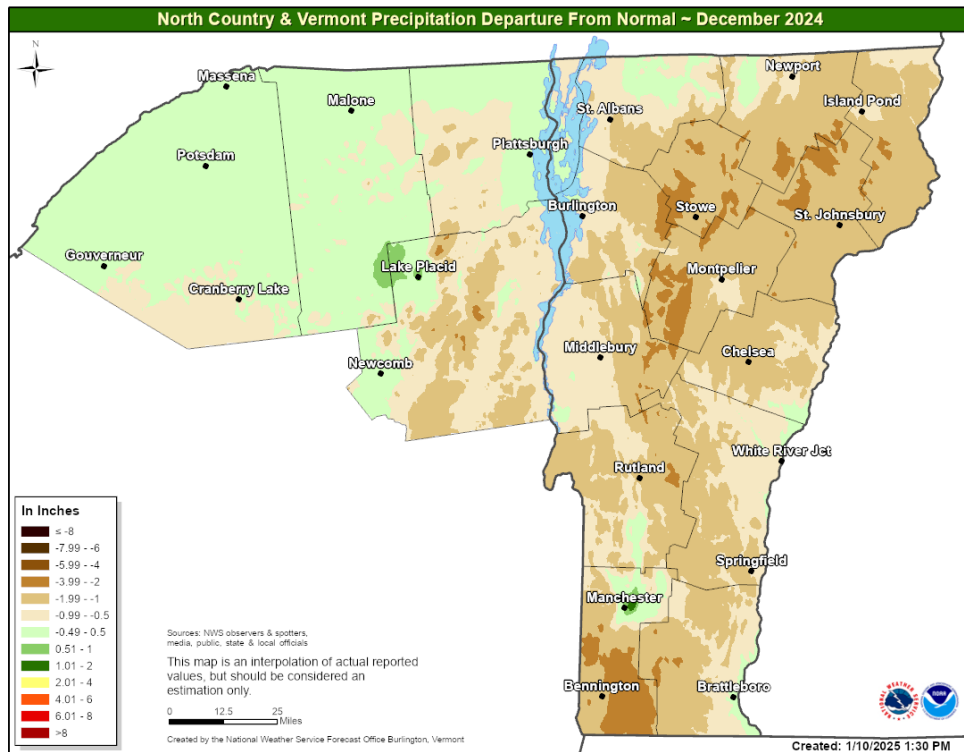


Figure 2: December 2024 precipitation departures from normal across the NWS Burlington HSA. Departures generally ran at or slightly above normal for much of northern New York and slightly below normal for Vermont.

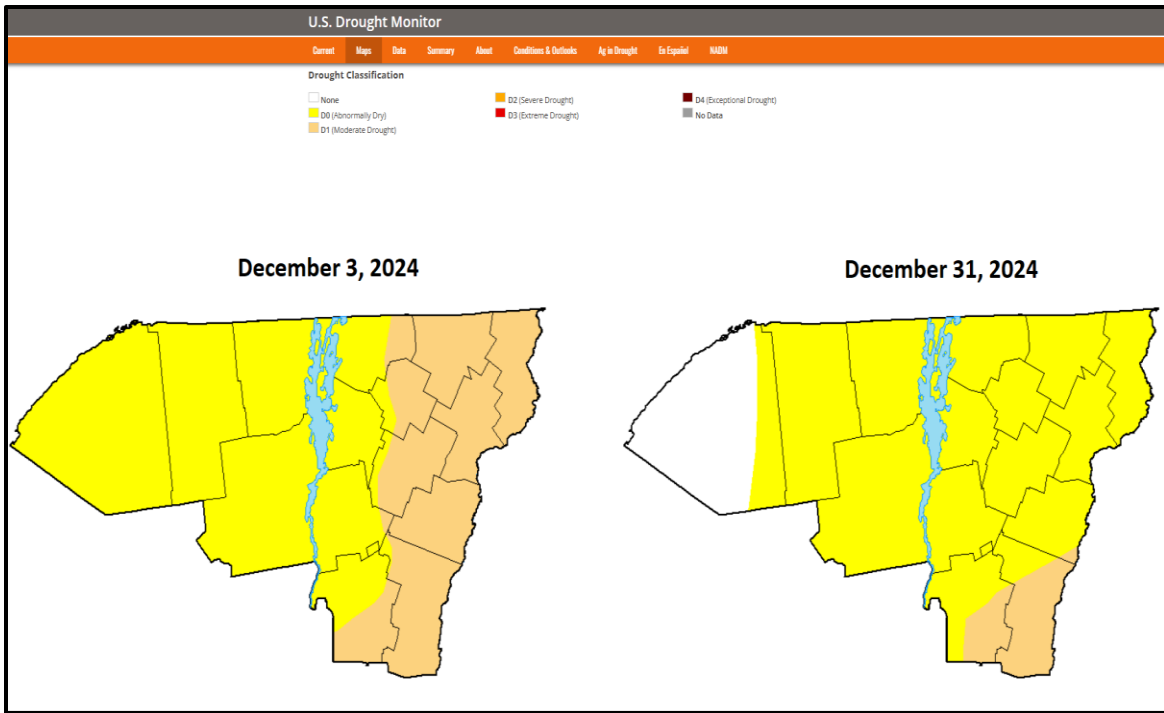


Figure 3: U.S. Drought monitor maps from December 3 and 31, 2024 showing some deterioration into D1, or moderate drought conditions across much of eastern Vermont by month's end.

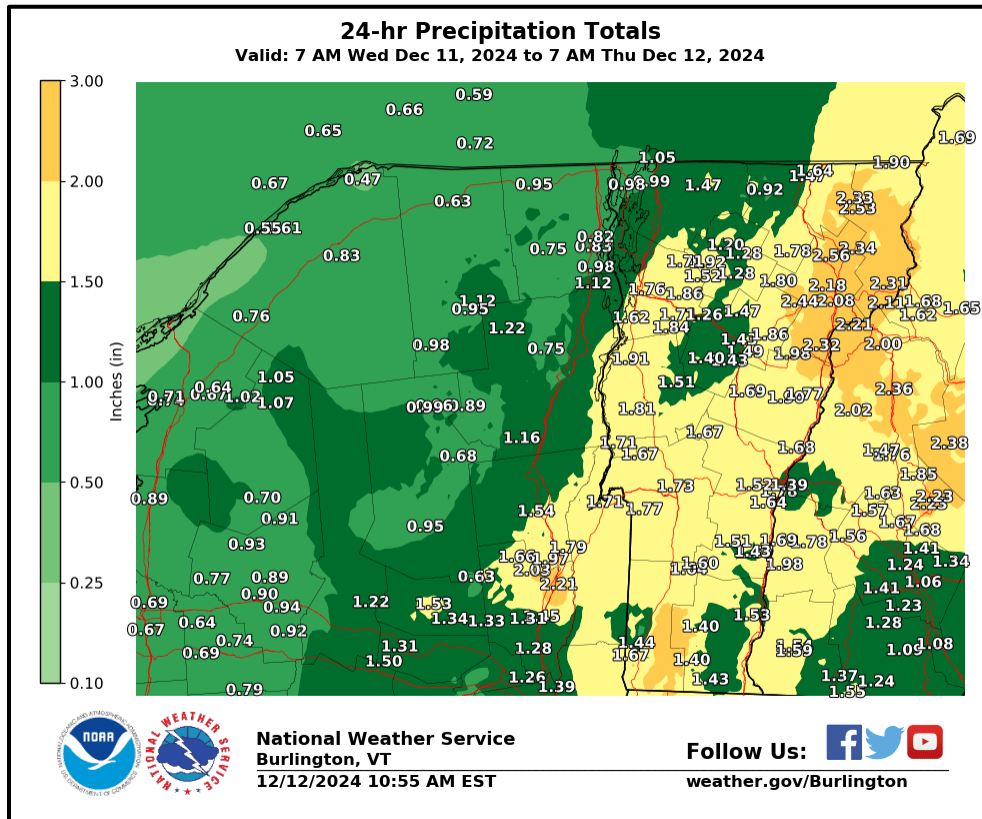


Figure 4: 24-hour rainfall amounts across the NWS Burlington HSA, ending 7:00 AM EST on December 12, 2024. Widespread totals from 1.5 to 2.5 inches were observed from the Adirondacks eastward, leading to a few reports of minor flooding.



Figure 5: An ice jam affects portions of US Route 5 in St. Johnsbury, VT on December 31, 2024 where some minor flooding and road closures were noted. (Photo courtesy the Caledonian Record)

PRODUCT	CONDITIONS	DATE	AREA
Flood Watch	Heavy rain/snowmelt	12/10-12/24	Adirondacks/Vermont
River Flood Warning	Heavy rain/snowmelt	12/12/24	Otter Creek (CENV1)
Flood Warning	Heavy rain/snowmelt	12/12/24	Passumpsic R.
Flood Warning	Heavy rain/snowmelt	12/12/24	Ottawaquechee R.
Flood Warning	Ice jam	12/30/24	E. Br. Ausable R.
Flood Warning	Ice jam	12/31/24	Passumpsic R.

Table 1: Listing of hydro Watch/Warning products issued by NWS Burlington during December 2024.