



NWS ALY Fire Weather Webpage Review

Mike Main, NWS Albany

<https://www.weather.gov/aly/fire>

Review of Local Products and Forecasts

- This is where most of our forecast information lives
- The fire weather matrix has the new NY zones overlaid on the map
- The fire weather dashboard allows users to click anywhere on the map to see detailed forecast information

Red Flag Program
Forecast Graphics
Local Products and Forecasts
Fuel Conditions
Drought/Precipitation Info

Long-Range Outlooks
Fire Danger Forecasts
Observations
Other Resources

Local Products & Resources

[Fire Weather Watch / Red Flag Warning](#)

[Routine Fire Weather Forecast](#)

[Area Forecast Discussion](#)

[Special Weather Statement](#)

[Fire Weather Graphics](#)

[NYS Spring Fire Weather Meeting Slides](#) (PDF) - 2023

[Local Annual Operations Plan](#) (PDF) - 2023

[New York State Annual Operations Plan](#) (PDF) - 2023

Local NFDRS Forecasts

300011 = Albany Pine Bush NY
 301111 = Belleayre Mountain NY
 300411 = Lake Pleasant NY
 305103 = Stonykill NY
 301901 = Saratoga NY
 431303 = Woodford VT

[NFDRS Decoder](#)

Fire Weather Matrix - Experimental

Fire Weather Dashboard

Planning forecast with color-coded thresholds

Point and click fire weather forecast - mobile friendly

<https://www.weather.gov/aly/fire>

Review of Drought/Precipitation Info

- Information on recent precipitation amounts, soil moisture, and snowfall is available under the “Drought/Precipitation Info” tab

Red Flag Program Forecast Graphics Local Products and Forecasts Fuel Conditions **Drought/Precipitation Info**

Long-Range Outlooks Fire Danger Forecasts Observations Other Resources

U.S. Drought Monitor
Albany, NY WFO
February 13, 2024
Updated February 13, 2024

Drought Monitor - Northeast
[Interactive Map](#)

U.S. Monthly Drought Outlook
Drought Severity During the Next Period
Valid to February 2024
Revised February 8, 2024

Monthly Drought Outlook

Keetch-Byram Drought Index
March 2024
March 2024

[Keetch-Byram Drought Index](#)

Three Day County-Averaged Precipitation Totals
Ending 2/24/24

Three-day Observed Precipitation Totals

Five Day County-Averaged Precipitation Totals
Ending 2/24/24

Five-day Observed Precipitation Totals

Days Since 0.25" Precipitation
Ending 2/24/24

Days Since 0.25" Precipitation

New York State Mesonet 5cm Soil Moisture Percentiles

[New York State Mesonet](#) 5cm Soil Moisture Percentiles

New York State Mesonet Current Soil Conditions

[New York State Mesonet](#) Current Soil Conditions

Snow Depth Resources
[Northeast River Forecast Center Snow Information Page](#)
[NOHRSC Interactive Snow Information](#)

Observed Precipitation Resources
[Northeast River Forecast Center](#)
[Northeast Regional Climate Center](#)
[Advanced Hydrologic Prediction Service](#)

Review of Long-Range Outlooks

- Long range temperature and precipitation outlooks from the Climate Prediction Center (CPC) are available from day 6 out to 3 months
- The day 6-10 and 8-14 outlooks are updated daily
- These products are solely produced by CPC with not input from the local forecast offices

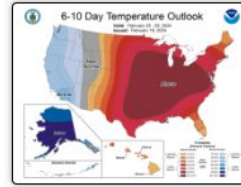
Red Flag Program Forecast Graphics Local Products and Forecasts Fuel Conditions Drought/Precipitation Info

Long-Range Outlooks

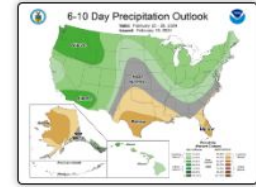
Fire Danger Forecasts

Observations

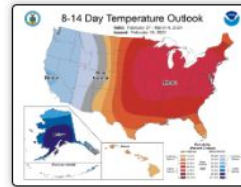
Other Resources



6-10 Day Temperature Probability
[Interactive Map](#)



6-10 Day Precipitation Probability
[Interactive Map](#)



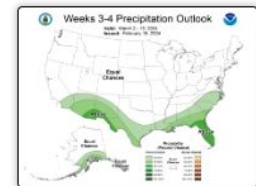
8-14 Day Temperature Probability
[Interactive Map](#)



8-14 Day Precipitation Probability
[Interactive Map](#)



Week 3-4 Temperature Probability



Week 3-4 Precipitation Probability

Other Sources of Weather Information

- [CoCoRaHS](#)
- Will be added to the “Other Resources” tab on the fire weather webpage

The background of the image features a dynamic scene of fire and smoke. At the bottom, there is a thick, bright orange and yellow flame that appears to be rising. Above the flame, wisps of white and light grey smoke drift upwards, creating a sense of movement and heat. The overall color palette is dominated by the warm tones of the fire and the cool, ethereal tones of the smoke against a dark, almost black background.

**If there is anything additional you would like
added to our fire weather page, please let us
know**



**Department of
Environmental
Conservation**

2023 NYS DEC Wildland Fire Season Review

NYS DEC Forest Rangers

March 7, 2024

2023 Wildfire Season Overview

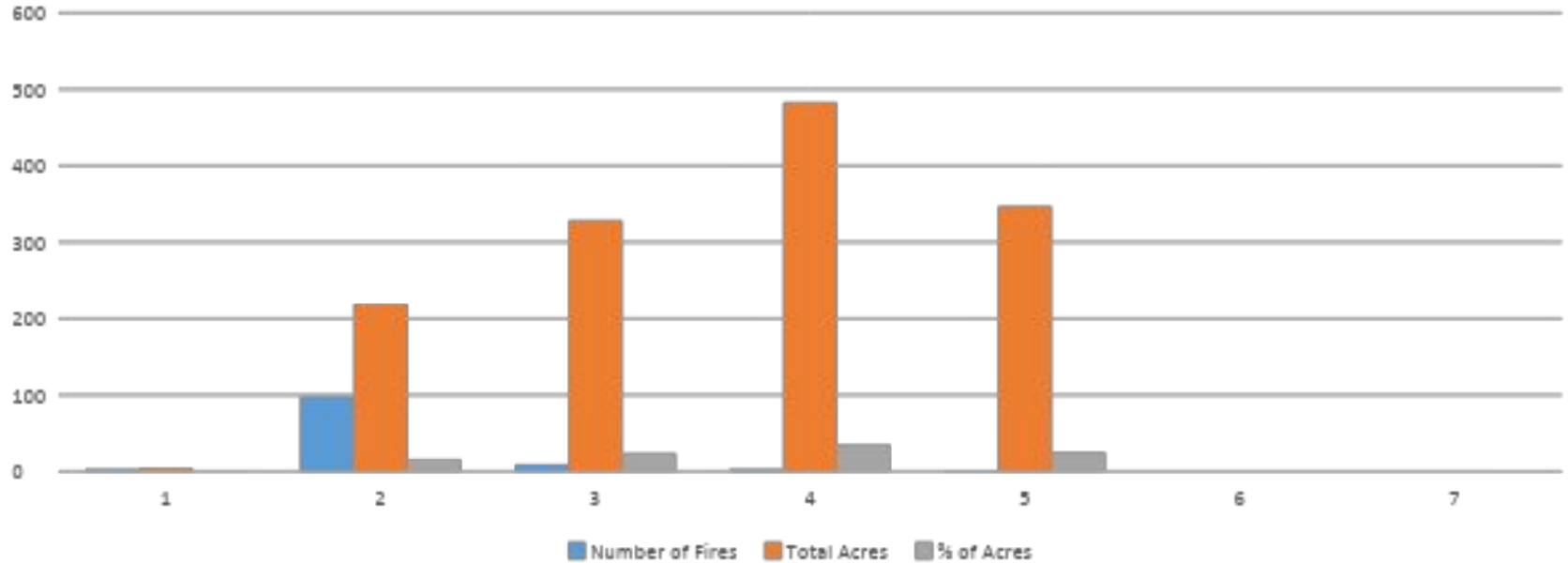
- Combined data from DEC and OFPC:
 - 1,394 Fires burned 2,134 Acres.
 - Many of these fires were suppressed by local fire departments with no DEC involvement.
- DEC Forest Rangers responded to 146 fires which burned 1,382 Acres.

DEC Forest Ranger Wildfire Response

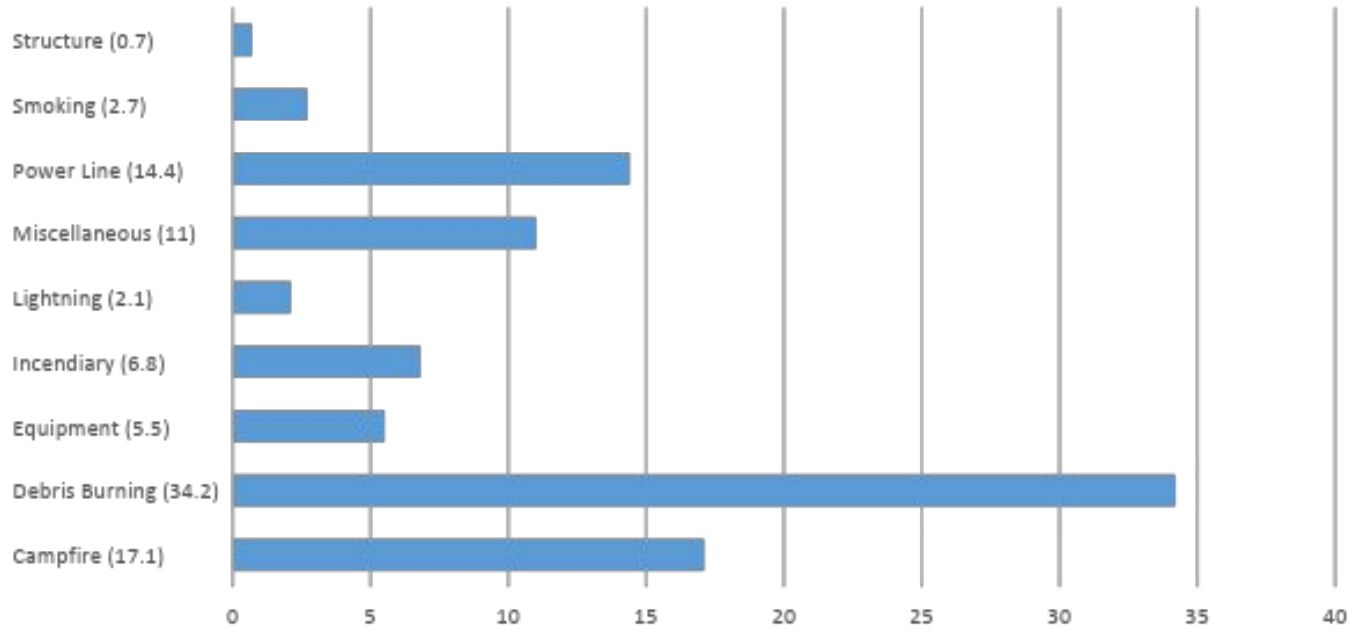
- Rangers responded to wildfires throughout the year. The first fire was February 3rd. The last fire was November 16th.



2023 DEC Wildfires by Size Class



2023 Wildfires by Cause (% of Total)



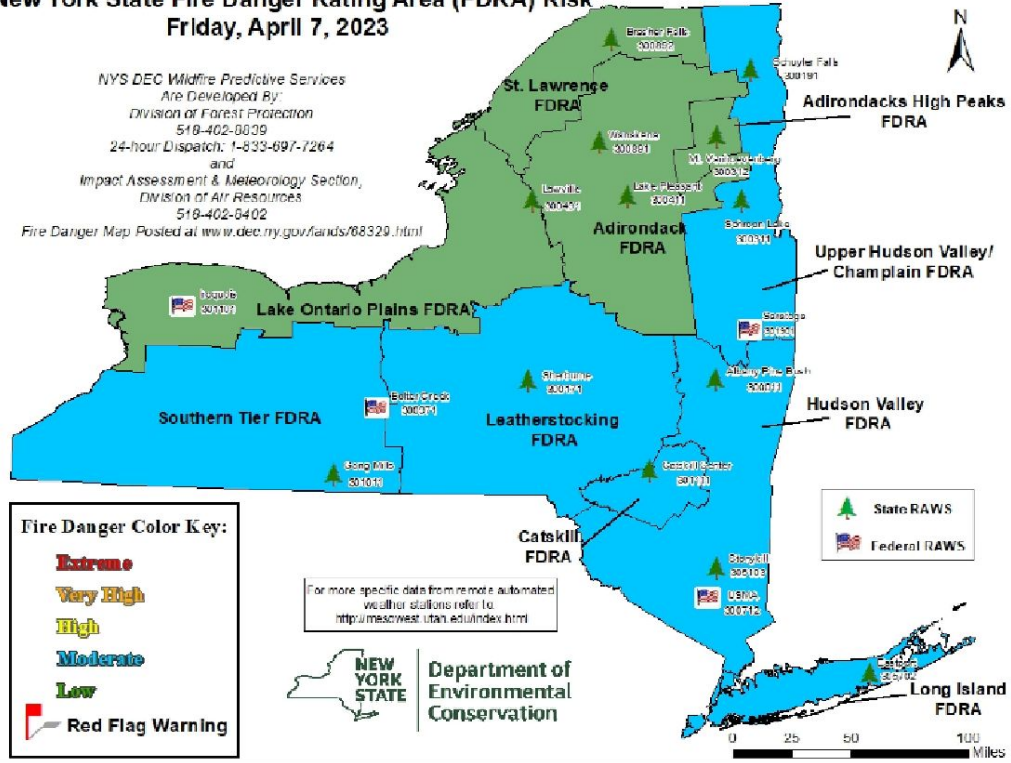


2023 Wildfires: Pre-green up

- Multiple high pressure systems brought dry air over the state throughout the spring resulting in elevated fire danger.
- Annual Statewide burn ban in effect March 15-May 14.
- Some significant dates:
 - April 8-14: 38 fires reported in every DEC Region in the state accounting for 949 acres
 - 100+ acres fires reported in DEC Regions 3,4 and 8. (largest was 347 ac.)

New York State Fire Danger Rating Area (FDRA) Risk Friday, April 7, 2023

NYS DEC Wildfire Predictive Services
Are Developed By:
Division of Forest Protection
519-402-0029
24-hour Dispatch: 1-833-697-7264
and
Impact Assessment & Meteorology Section,
Division of Air Resources
519-402-0402
Fire Danger Map Posted at www.dec.ny.gov/fards/68329.html





The Shin Hollow fire was the biggest fire in 2023 at 347 acres. The fire started on April 12th and was declared out on April 17th. The cause of this fire was debris burning.



2023 Spring Fire Season Video

<https://www.facebook.com/watch/?v=625285485769252>

2023 Wildfire Assistance

Requests for assistance came as early as May 31st from the provinces of Nova Scotia in Canada.

New York State is a member of the Northeast Forest Fire Protection Compact (NFFPC) that includes 7 states and 5 provinces.



2023 Wildfire Assistance

Interagency crews were deployed to Nova Scotia, Quebec, Idaho and California.

Single Resources were deployed to Idaho, Montana and California





2023 Wildfire Assistance

2023 Wildfires- Fall

- November 13-16 had 5 wildfires report in DEC regions 3,5,8 and 9. These 5 fires burned a total of 186 acres. The largest of these was the 138 acres Rush Creek Fire in Allegeny County.



2023 Prescribed Fire

- DEC Forest Rangers, in cooperation with the Albany Pine Bush and the Central Pine Barrens Commission conducted 52 prescribed burns in 2023. A total of 1,006 acres were treated with prescribed fire.





2023 Prescribed Fire

- Starting mid March and continuing through the middle of May, prescribed burns were conducted in DEC Regions 1, 4, 7 & 8.



2023 Prescribed Fire-Rx Fire Modules

- Modules consisting of 6 Rangers were sent to assist with prescribed fire projects on Long Island. This provided a great training opportunity, and it ensured adequate staffing to conduct the burns.



2023 Prescribed Fire-Regions 4, 7 & 8

- Additional Rangers were sent to assist with prescribed burns in these regions to provide training opportunities and adequate staffing.
- The NWS forecast and the NWS Fire Weather Dashboard were critical decision making tools in planning for these burns.

2023 Prescribed Fire-Regions 1 & 4

- Following green-up and into the fall, additional burns were conducted in DEC Region 4 in partnership with the Albany Pine Bush, and in DEC Region 1 in partnership with the Central Pine Barrens Commission and the Brookhaven National Lab.



QUESTIONS???

Thank You

- Tim Carpenter
- Assistant Fire Mgmt. Officer
- DEC Forest Rangers
- timothy.carpenter@dec.ny.gov
- 607 664-1021

Connect with us:

Facebook:

www.facebook.com/NYSDEC

Twitter: twitter.com/NYSDEC

Flickr: www.flickr.com/photos/nysdec

National Weather Service On Site Decision Support for GMNF at the Robert Frost Prescribed Burn on 14 April 2023

Adrianna Kremer and Brooke Taber
2024 Fire Weather Users Meeting
WFO Burlington, VT



National Weather Service **Burlington**

www.weather.gov/btv

Spot Forecasts

- NWS Burlington provided several spot forecasts to GMNF 12 to 24 hours prior to firing operations.
- Provides crew with what conditions to expect throughout the burn.
 - Especially important for winds, relative humidity, and mixing heights for smoke dispersion.
- Discussion was important for highlighting the impacts of the local terrain on the burn site.

Spot Forecast for Robert Frost...Federal or State Agency
National Weather Service Burlington VT
1032 AM EDT Fri Apr 14 2023

Forecast is based on ignition time of 1100 EDT on April 14.
If conditions become unrepresentative...contact the National Weather Service.

Please contact our office at (802) 658-0207, if you have questions or concerns with this forecast.

.DISCUSSION...

Unusual warmth and low humidity continue, but not as hot or dry as yesterday. Ample sun exposure, northwesterly transport wind, and local terrain will favor a westerly flow at the burn site with speeds running slightly higher than usual upslope driven conditions. As such, sustained speeds of 8 to 11 mph should be expected through the afternoon with gusts to around 15 mph. RH this afternoon will be dropping to near critical levels around 30% but will improve overnight with recoveries in the 65-75% range. High pressure ridging will settle over the site tonight suppressing mixing for Saturday while allowing winds to decouple completely overnight. Expect a downslope wind component to develop after sunset. The burn site's location may be influenced by higher terrain immediately south of the site early in the evening driving a brief light south flow before more typical easterly downslope develops after 2200 local time.

.REST OF TODAY...

Sky/weather.....Mostly sunny (25-35 percent) with periods of partly cloudy (35-50 percent) due to high clouds.
Chance of pcpn.....0 percent.
LAL.....1.
Max temperature.....74-76.
Min humidity.....28-33 percent.
Wind (20 ft).....West-northwest winds 6 to 9 mph increasing to 8 to 11 mph with gusts to 15 mph after 1300.
Mixing height.....3000 ft AGL.
Transport winds.....Northwest 7 to 9 mph.
Haines Index.....4 or low potential for large plume dominated fire growth.

| TIME (EDT) | 11 AM | 1 PM | 3 PM | 5 PM |
|-------------------|-------|------|------|------|
| Sky (%)..... | 51 | 43 | 17 | 2 |
| Weather cov..... | | | | |
| Weather type.... | NONE | NONE | NONE | NONE |
| Tstm cov..... | | | | |
| Chc of pcpn (%).. | 0 | 0 | 0 | 0 |
| LAL..... | 1 | 1 | 1 | 1 |
| Temp..... | 66 | 71 | 74 | 74 |
| RH..... | 48 | 38 | 35 | 35 |
| 20 ft wind..... | W 9 | W 10 | W 10 | W 6 |
| 20 ft wind gust.. | | | | |
| Mix hgt (ft).... | 2000 | 2600 | 3000 | 2400 |
| Transport wind.. | NW 9 | NW 8 | NW 7 | N 7 |
| Haines index.... | 4 | 4 | 4 | 4 |

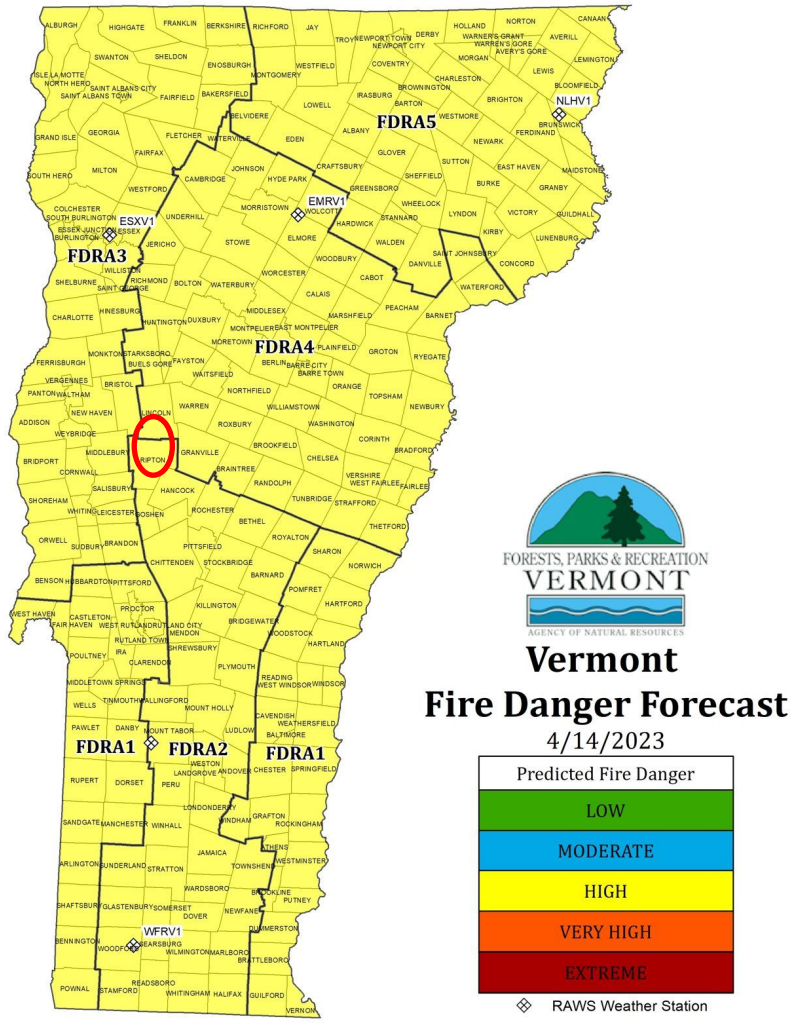
About the Burn Site

- Robert Frost Interpretive Trail in Ripton, VT.
- Meteorologists were stationed about $\frac{1}{4}$ mile away from the burn site in a location with similar conditions in order to provide accurate observations.
 - Being further from the burn site allowed for good observations on smoke behavior.



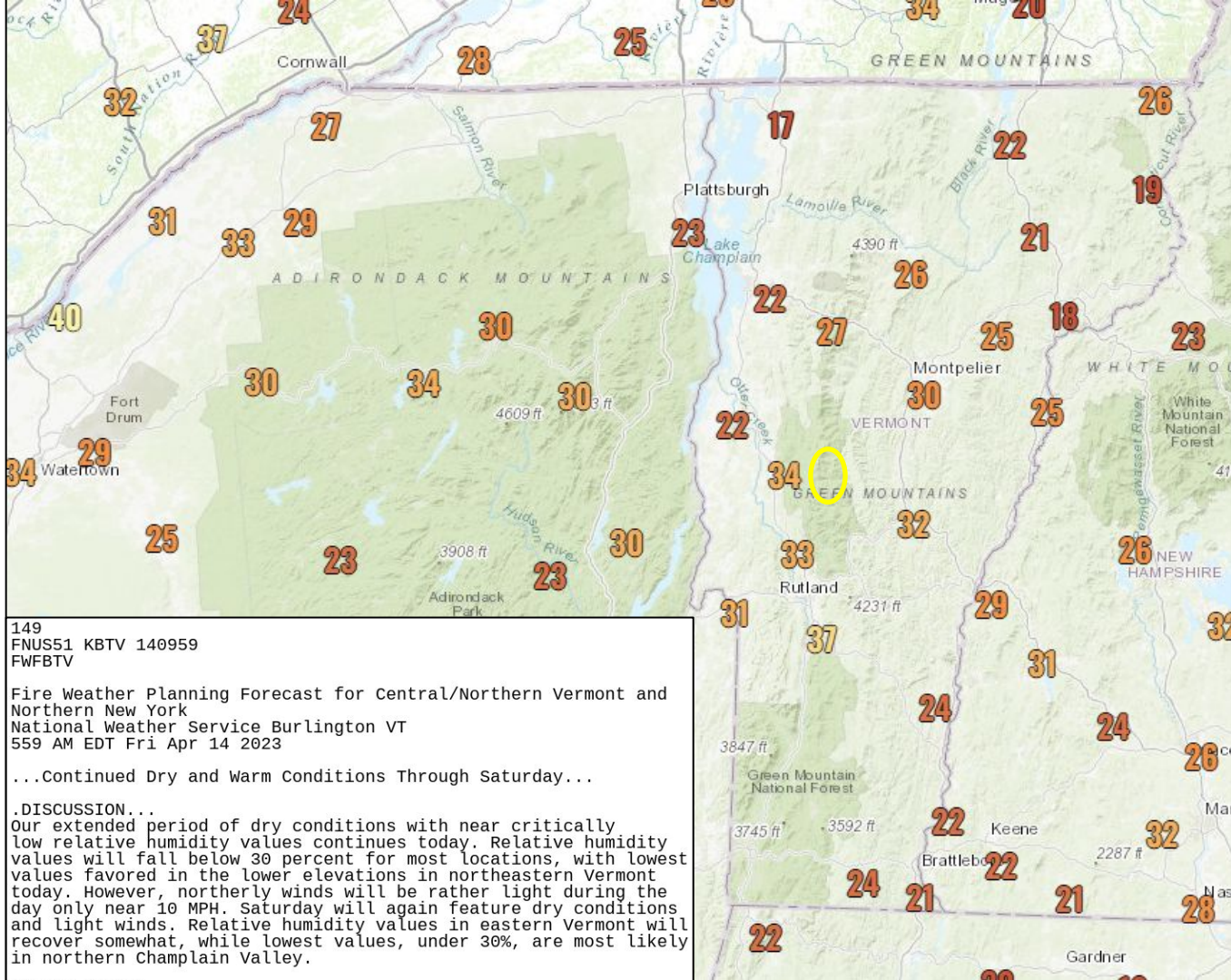
Weather Conditions

- The best days for prescribed burns are associated with near critical fire weather conditions.
- Early April was characterized by a prolonged period of dry weather due to high pressure building over the region.
 - Red Flag Warning was issued for the Champlain Valley earlier in the week.

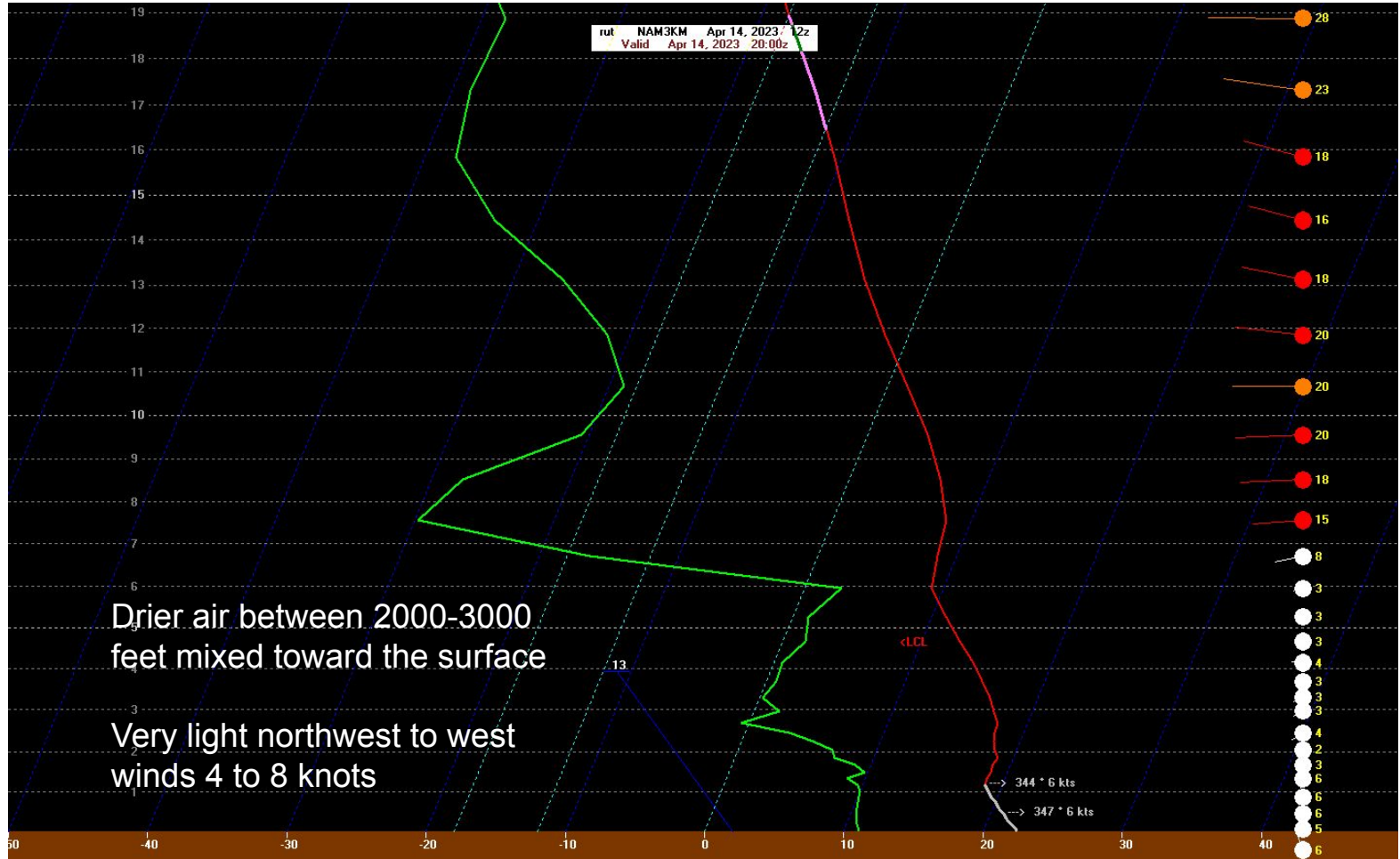


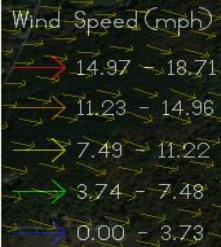
Weather Conditions

- Near critical RH values across the region during a prolonged period of warm and dry weather.
- Winds were much lighter compared to the Red Flag Warning earlier in the week.



NAM 3KM at RUT at 3 PM on 14 April 2023





Slight enhancement on ridges of 11 to 15 mph



Robert Frost Prescribed Burn Area



Slight enhancement on ridges of 11 to 15 mph

Ran a Wind Ninja run with uniformed west wind at 10 mph to see how terrain would enhance wind flow along the Route 125 Corridor.

Weather Briefing

- Meteorologists provided the crew with a verbal weather briefing the morning of the burn at the GMNF Rochester Ranger Station prior to firing operations.
 - The verbal briefing is often very similar to the spot forecast
 - Provides better situational awareness for the entire crew and onsite Mets involved in the prescribed burn
 - Chance to ask questions with two way communications

During the Prescribed Burn

- Throughout the burn, weather observations were taken every half hour to update the crew via radio.
 - Observations included the current temperature, RH, wind speed and direction (including gusts).
 - Fine Dead Fuel Moisture (FDFM) and Probability of Ignition (PIG) were also relayed to the crew to provide insight on the fire behavior.
- Smoke behavior and movement were also shared so the crew had a sense of any impacts given the proximity to Rt. 125 and the Middlebury Bread Loaf Campus.

April 14, 2023 Robert Frost Prescribed Burn

| WEATHER PREDICTED / Spot Wx Forecast | | | | | | | |
|--------------------------------------|------|----|------|------|-----|------|----------|
| Time | Temp | RH | Wind | FDFM | PIG | KBDI | 10-HR FM |
| | | | | | | | |

Reference forecast 10-hr FM Dead Fuel Moisture - NFDRS (wfas.net)

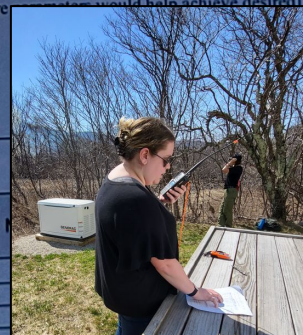
| Weather Observed | | | | | | |
|------------------|------|-----|-----------------|------|-----|-----------|
| Time | Temp | RH | Wind | FDFM | PIG | |
| 1230 | 72 | 40% | 3-5-6 7 mph | 6% | | |
| 1300 | 74 | 40% | WNW 2-4 6-8 mph | 6% | | 50 |
| 1400 | 76 | 38% | light winds | 6% | | 60 1410 W |
| 1430 | 76 | 37% | W 2-5 mph 6-8 | 6% | | 60 |
| 1500 | 77 | 36% | W 2-4 6-8 | 6% | | 60 |
| 1530 | 78 | 36% | W 1-2 6-5 | 6% | | 60 |
| 1600 | 79 | 33% | W 1-3 6-5 | 6% | | 60 |

Notes: (e.g., Smoke, Flame Length, Rate of Spread)
 Smoke lift above canopy (at) dispersing up valley toward Breadloaf.

Comments & Recommendations:
 (e.g., if objectives weren't met what prescription or fuel moisture adjustments would help achieve desired effects?)

Strata

Substrates: Soil & Duff Layer, Leaf Litter
 Grass/Forb: Small Shrub <3' (1-10 hr fuels)
 Tall Shrub >3' (10-100 hr fuels)





Video provided by Lindsay Silvia

Overall Takeaways

- The prescribed burn was a great success with all of the roughly 7 acres properly and safely burned.
 - This will promote growth of the blueberries located in the Robert Frost Interpretive Trail and improved habitat for the local wildlife.
- On-site support allows NWS Burlington to build our relationship with GMNF and our other fire weather partners.



BTV Fire Weather Program Review

- Red Flag Event on 11 April 2023, first since April 2021
- Issued 52 Spots, 38 prescribed burns and 3 wildfires, only 39 total in 2022
- Provided onsite support to GMNF for Robert Frost Prescribed Burn
- Expanding FWF and FWM to twice a day starting March 20th
- Fire Weather Users Meeting on 13 March 2024 from 9 AM to Noon
- IMET deployment in Fall of 2023 to Anvil Fire in SW Oregon



Fire Weather Outlook

NWS Albany

Fire Weather Outlook Spring 2024
Wednesday March 7, 2024

Presented by: Steve DiRienzo
Warning Coordination Meteorologist
NWS Albany



National Oceanic and
Atmospheric Administration
U.S. Department of Commerce

National Weather Service
Albany, NY



Overview

- About NOAA's Seasonal Outlooks
- 8-14 Day Outlook
- March 2024 - May 2024 and June 2024 - Aug 2024 Outlooks
- El Niño - First Time in 4 Years
- 2024 Precipitation to Date
- Fire Weather Climatology
- Summary
- Statewide Fire Weather Links
- Hurricane Awareness Tour - May 7, 2024 - Albany Intl Apt





About NOAA's Seasonal Outlooks

- NOAA's seasonal outlooks provide the likelihood that temperatures and total precipitation amounts will be above, near, or below-average, and how drought conditions are anticipated to change in the months ahead.
- NOAA's Climate Prediction Center updates the monthly and three-month outlooks each month. The next update will be available Thursday Mar 21, 2024.



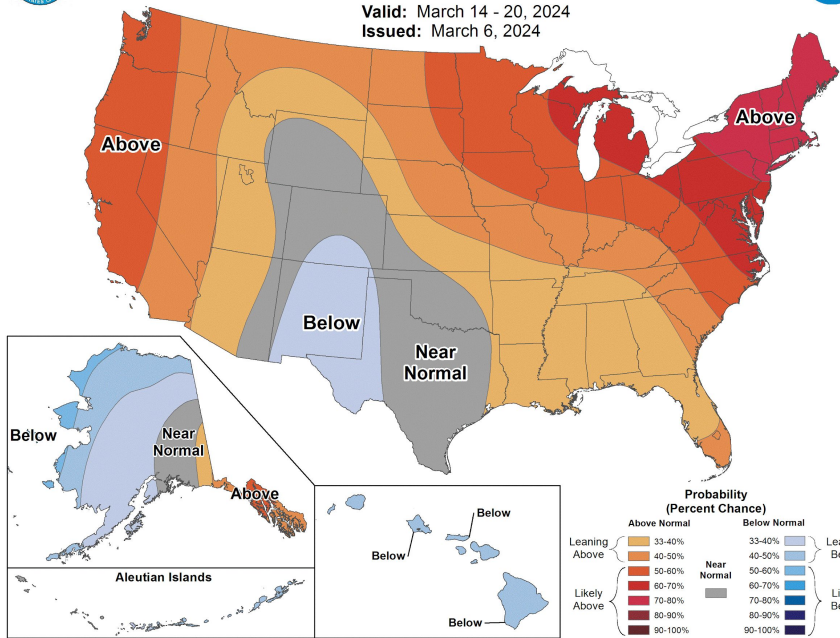


8-14 Day Outlook



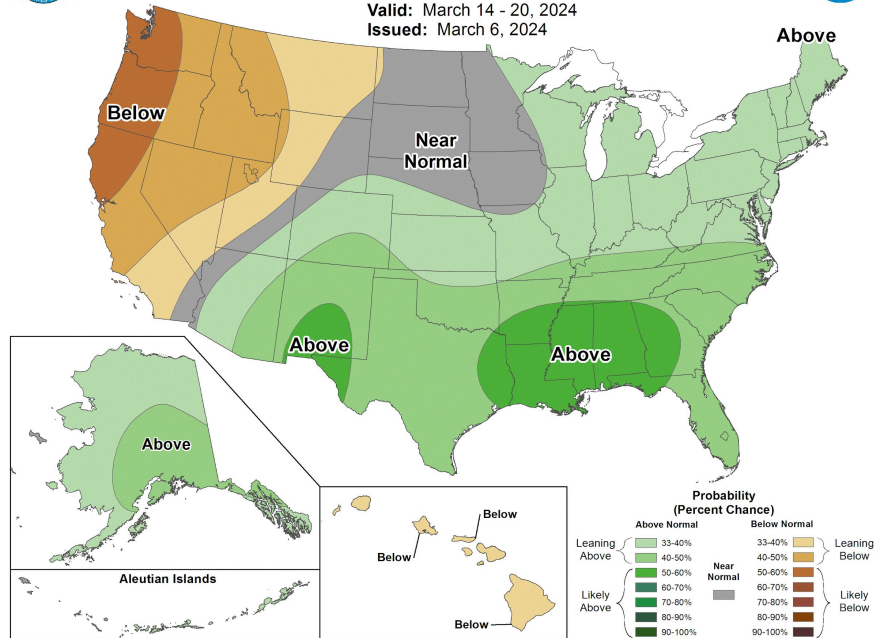
8-14 Day Temperature Outlook

Valid: March 14 - 20, 2024
Issued: March 6, 2024



8-14 Day Precipitation Outlook

Valid: March 14 - 20, 2024
Issued: March 6, 2024



Signals for warmer and wetter than normal.





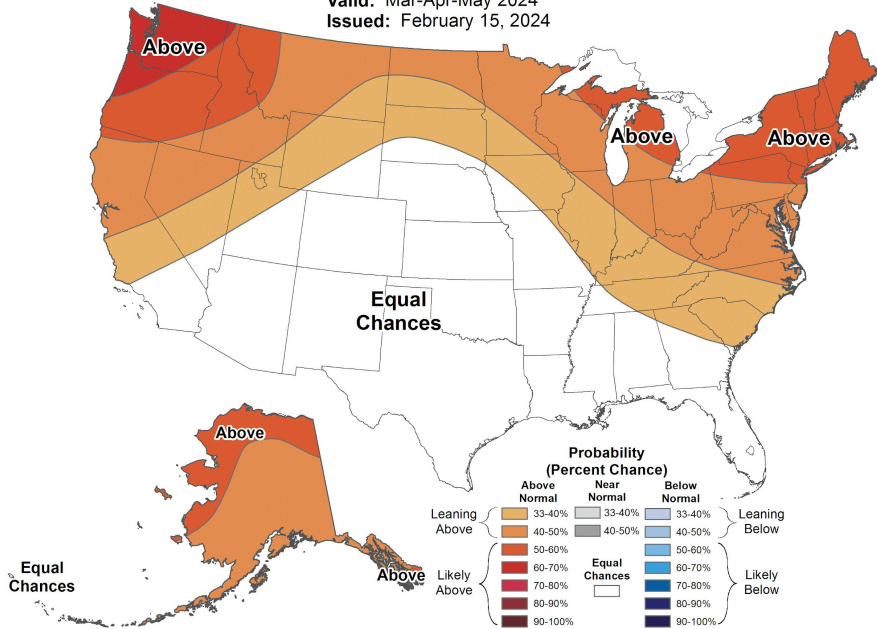
Spring Outlook (Mar 2024 - May 2024)



Seasonal Temperature Outlook



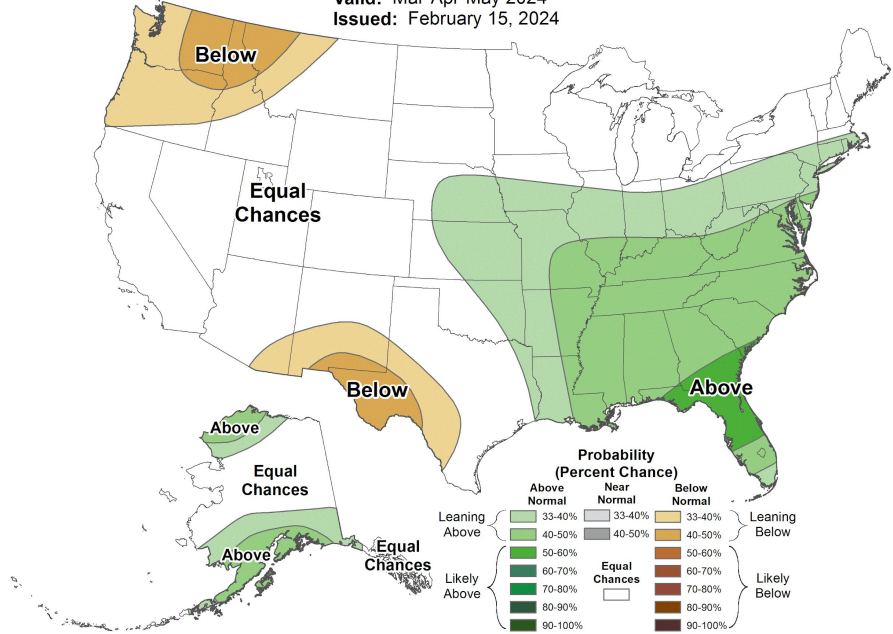
Valid: Mar-Apr-May 2024
Issued: February 15, 2024



Seasonal Precipitation Outlook



Valid: Mar-Apr-May 2024
Issued: February 15, 2024



Southeastern NY looks to be wetter than northern NY.





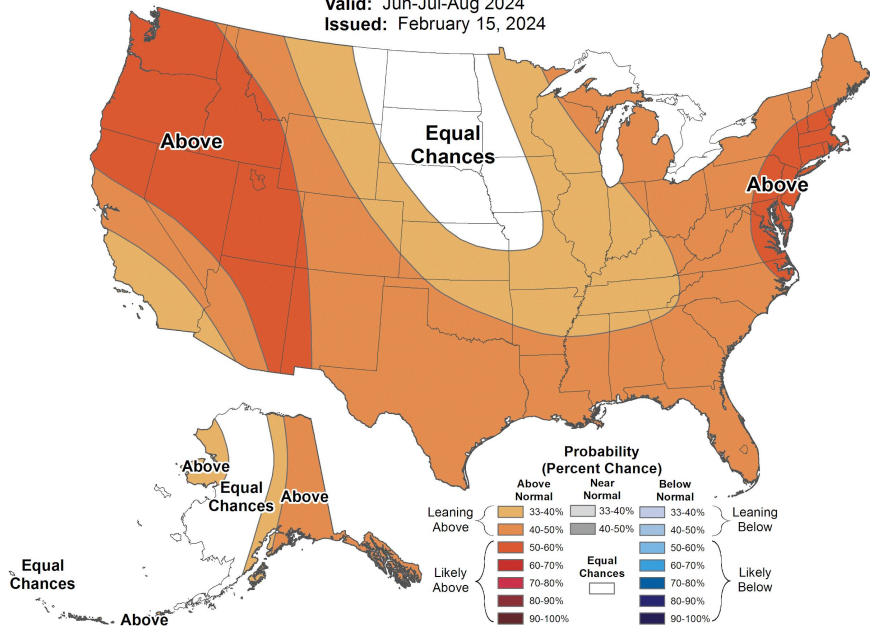
Summer Outlook (Jun 2024 - Aug 2024)



Seasonal Temperature Outlook



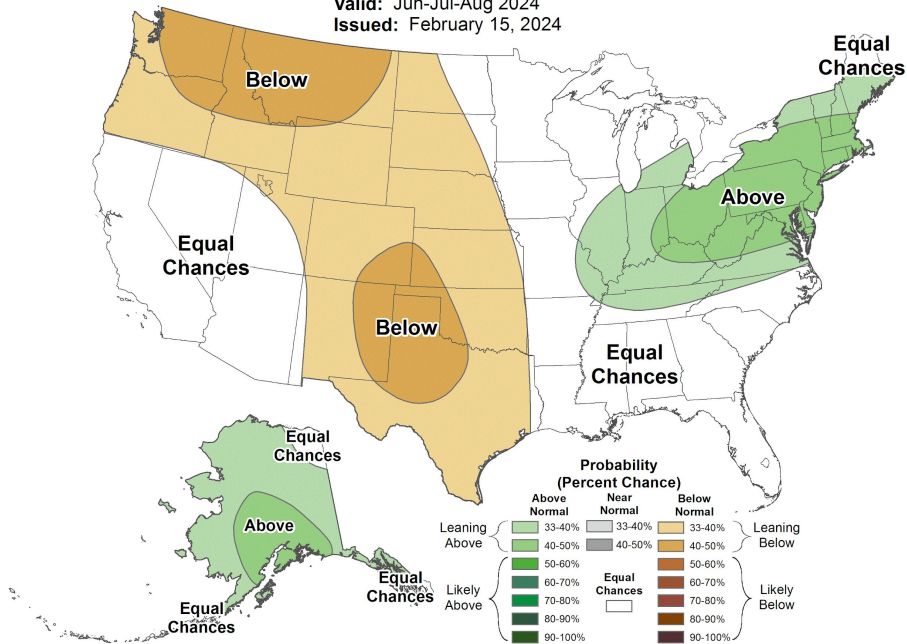
Valid: Jun-Jul-Aug 2024
Issued: February 15, 2024



Seasonal Precipitation Outlook



Valid: Jun-Jul-Aug 2024
Issued: February 15, 2024



<https://www.cpc.ncep.noaa.gov/>

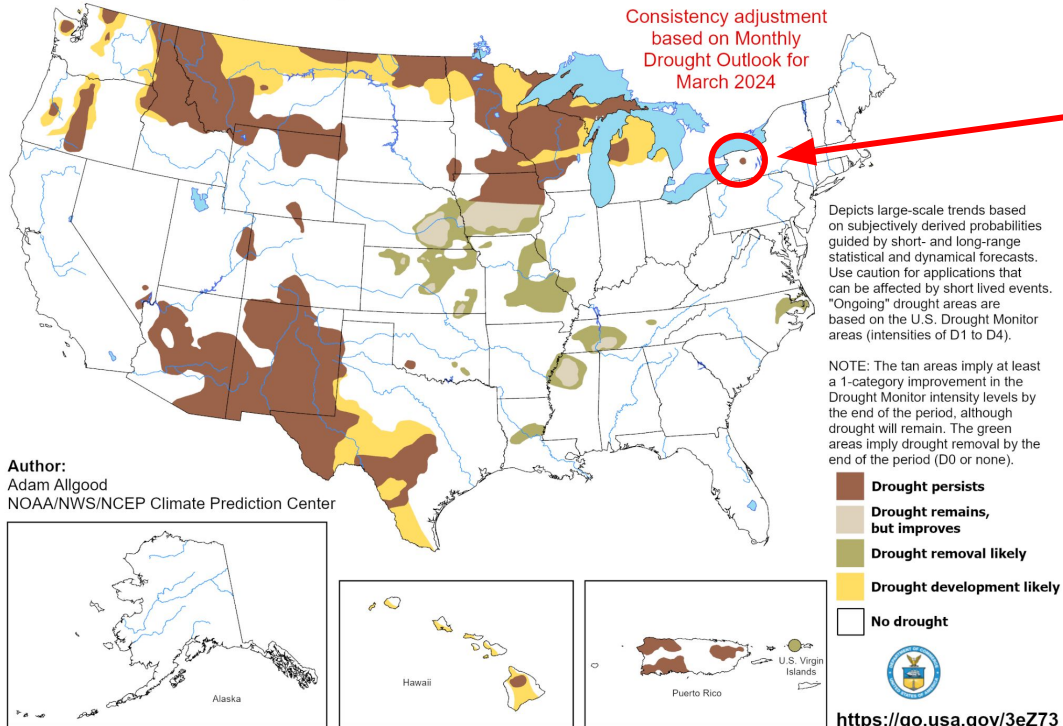




Drought Outlook (Nov 30, 2023 - February 29, 2024)

U.S. Seasonal Drought Outlook Drought Tendency During the Valid Period

Valid for March 1 - May 31, 2024
Released February 29, 2024

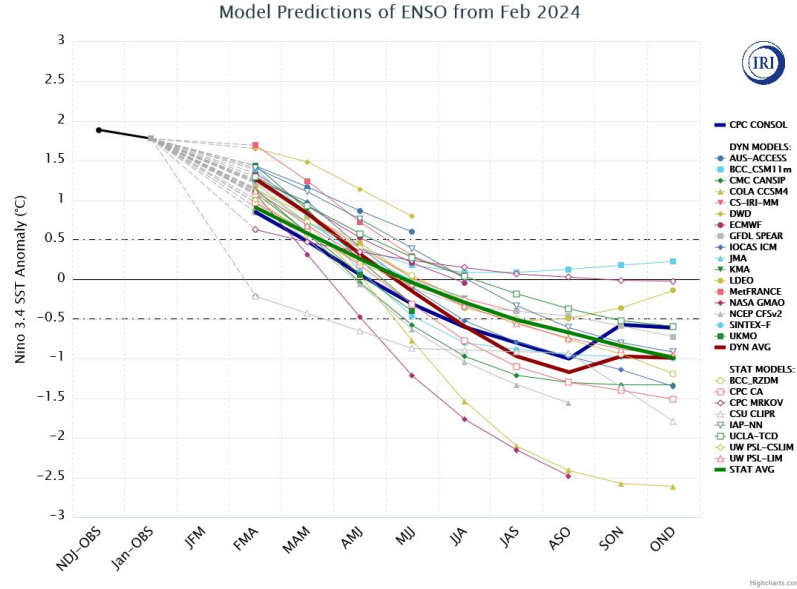


Very Small area of drought in western NY: Forecast to persist.





ENSO Outlook - El Niño in Progress (Pacific Warm Phase)



El Niño transitions to La Niña this summer:

- La Niña tends to increase Atlantic tropical cyclone development.
- Fall may be wetter than normal.

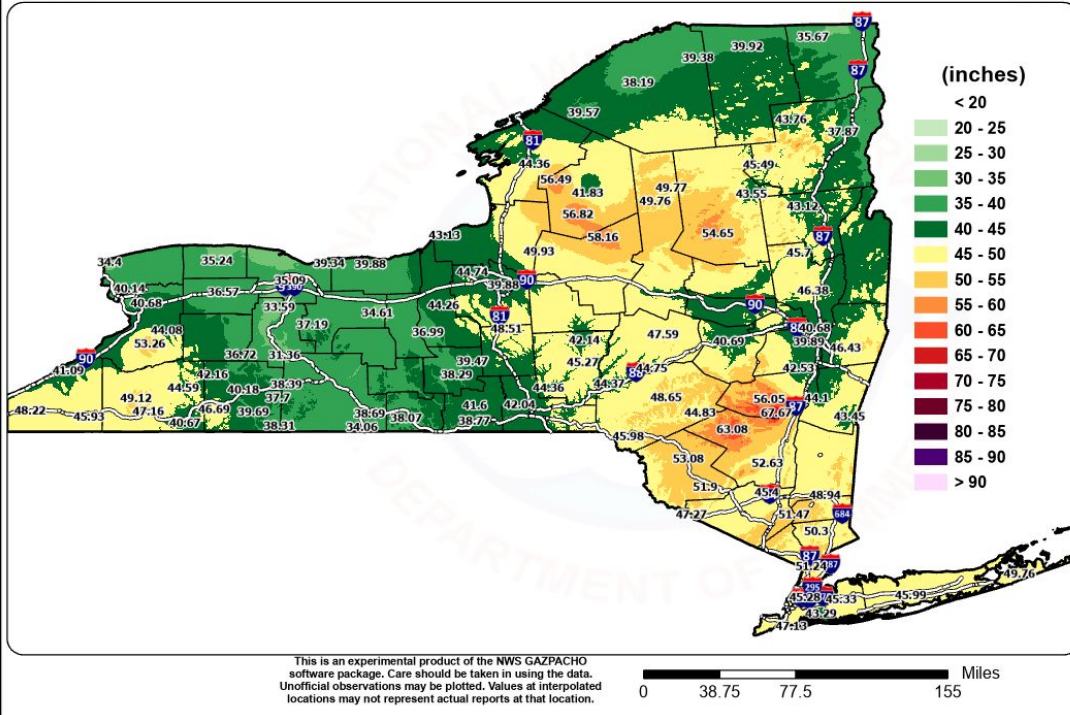




New York Annual Rainfall



New York State Normal Rainfall (30-year average) 1991-2020



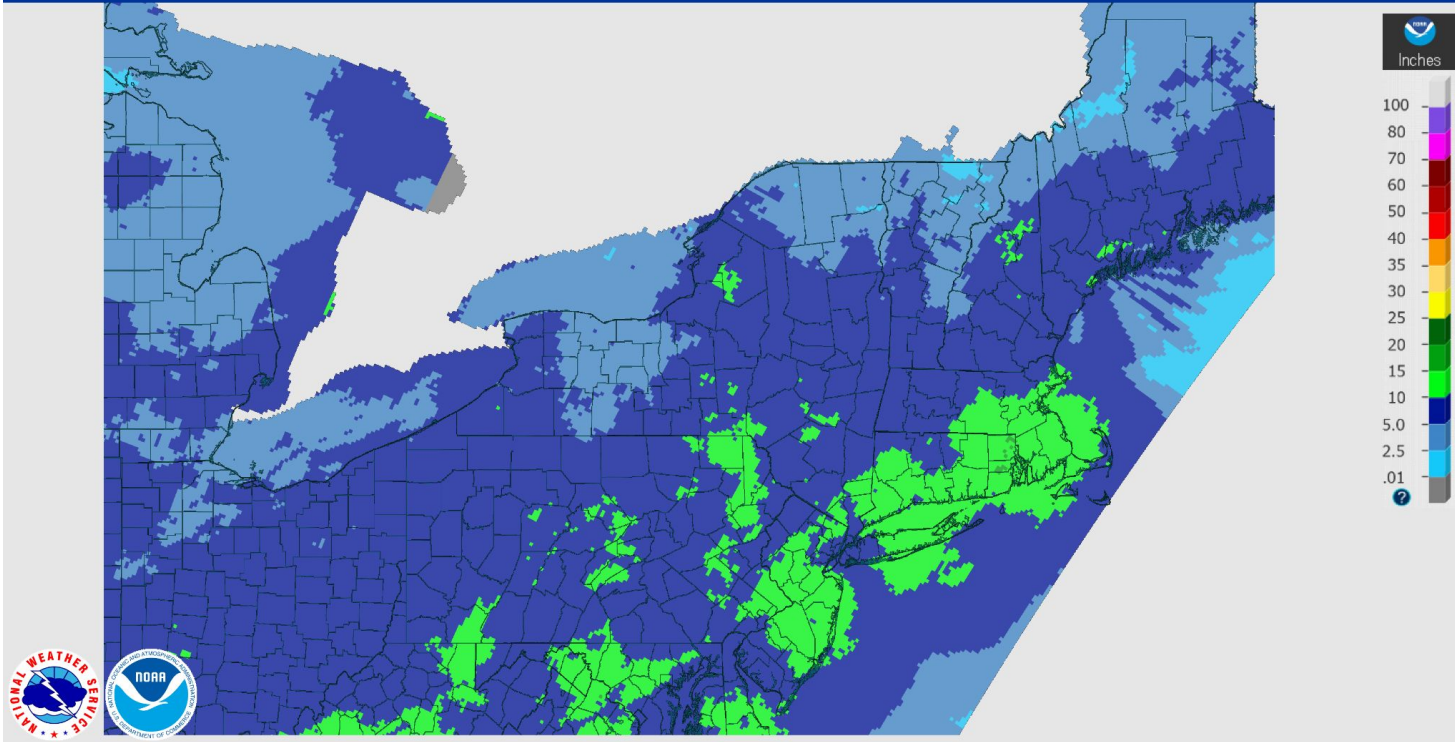


New York Rainfall - Year to Date

March 06, 2024 Year to Date Observed Precipitation

Created on: March 06, 2024 - 20:39 UTC

Valid on: March 06, 2024 12:00 UTC



National Oceanic and Atmospheric Administration

U.S. Department of Commerce

National Weather Service
Albany, NY

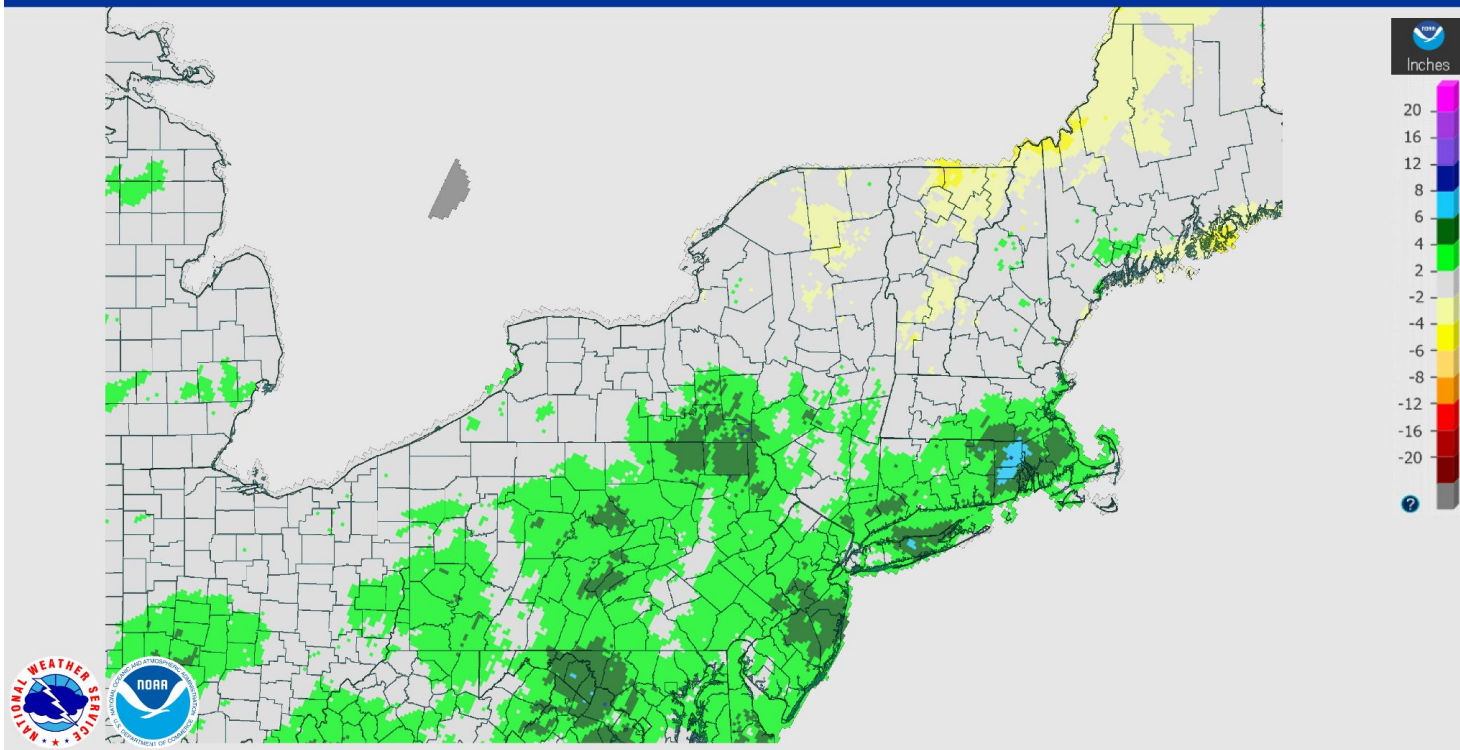


New York Rainfall - Year to Date Departure From Normal

March 06, 2024 Year to Date Departure Precipitation

Created on: March 06, 2024 - 20:41 UTC

Valid on: March 06, 2024 12:00 UTC



National Oceanic and Atmospheric Administration

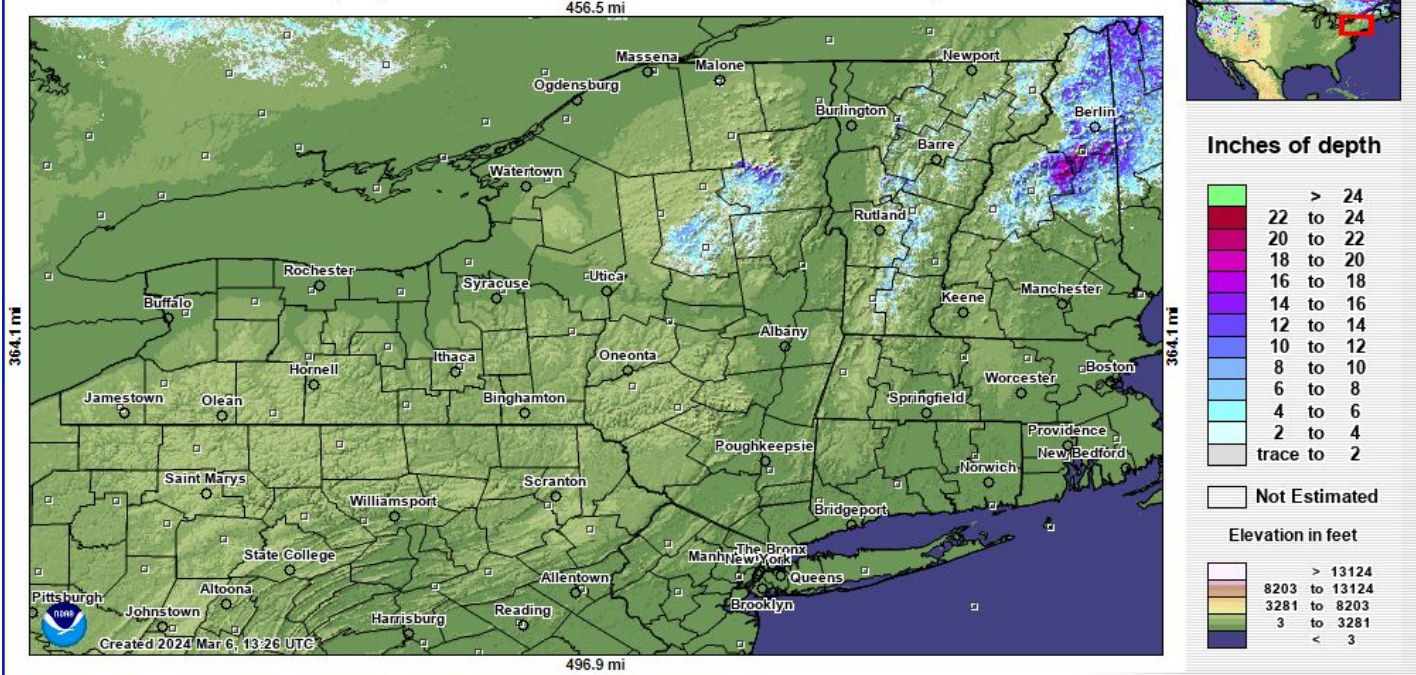
U.S. Department of Commerce

National Weather Service
Albany, NY



New York Snow on Ground - Mar 6 - 10 AM

Modeled Snow Depth (Shallow-snow Legend) forecasted for 2024 March 6, 15:00 UTC



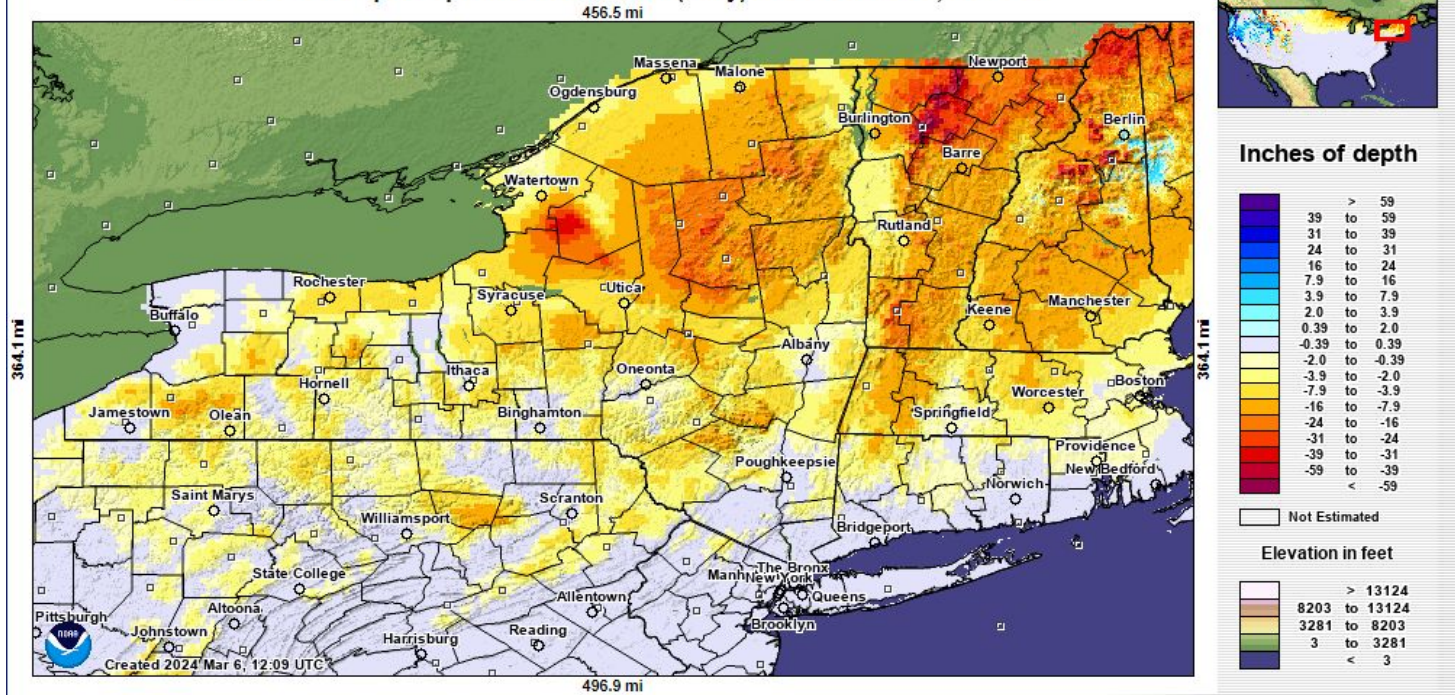
https://www.nohrsc.noaa.gov/interactive/html/map.html?ql=station&zoom=&loc=Latitude%2CLongitude%3B+City%2CST%3B+or:Station+ID&var=snow_depth_shallow&dv=2023&dm=12&dd=12&dh=16&snap=1&o11=1&o9=1&o12=1&o13=1&lbl=m&mode=pan&extents=us&min_x=-80.016666666669&min_y=40.099999999996&max_x=-70.633333333336&max_y=45.374999999996&coord_x=-75.32500000000249&coord_y=42.737499999996004&zbox_n=&zbox_s=&zbox_e=&zbox_w=&metric=0&bqvar=dem&shdvar=shading&width=800&height=450&nw=800&nh=450&o=0&font=0&is=1&uc=0





New York Snow on Ground - Mar 6 - 01 AM

Modeled Snow Depth Departure from Normal (Daily) for 2024 March 6, 6:00 UTC

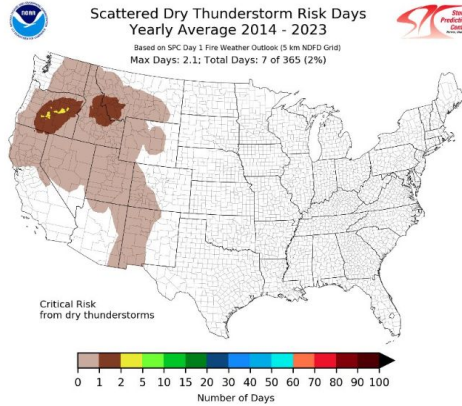
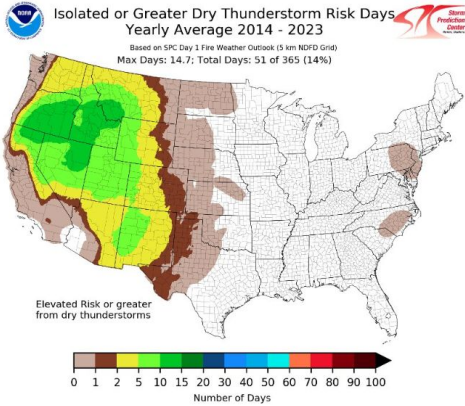
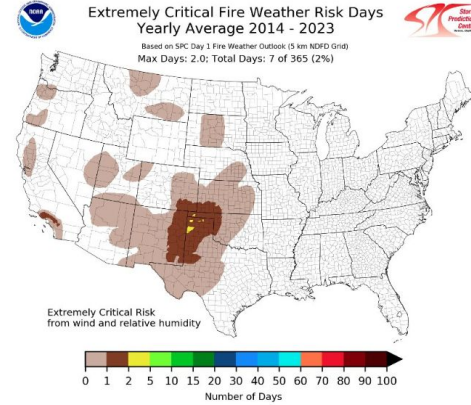
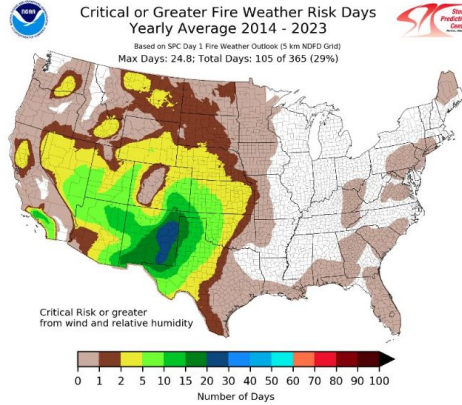
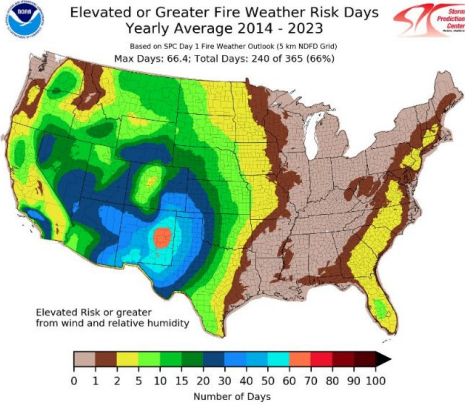


https://www.nohrsc.noaa.gov/interactive/html/map.html?ql=station&zoom=&loc=40.85+N%2C+70.92+W&var=ssm_depth_norm_d&dy=2023&dm=12&dd=12&h=16&snap=1&o11=1&o9=1&o12=1&o13=1&lb=m&mode=pan&extents=us&min_x=-80.016666666669&min_y=40.099999999996&max_x=-70.633333333336&max_y=45.374999999996&coord_x=-75.3250000000249&coord_y=42.737499999996004&zbox_n=&zbox_s=&zbox_e=&zbox_w=&metric=0&bavar=dem&shdvar=shading&width=800&height=450&nw=800&nh=450&_o=0&font=0&js=1&uc=0





Fire Weather Climatology





Fire Weather Outlook Summary

- Rainfall Near Normal
- Snowpack Well Below Normal
- Fine Fuels will dry quickly with no snow cover
- Conflicting signals: Possibility of above normal fire season this spring if no additional snow, but there is a wet signal after greenup for this summer





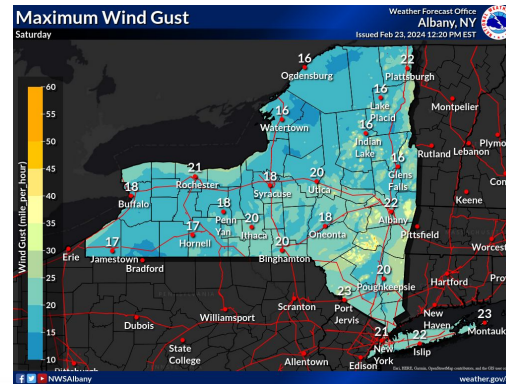
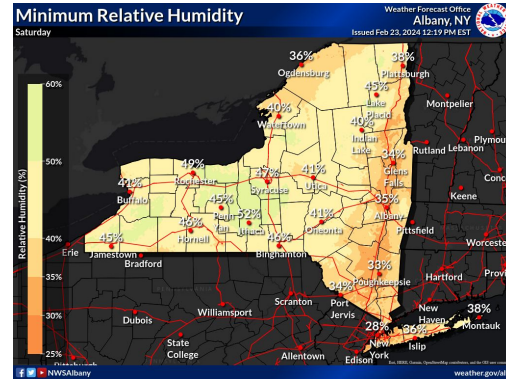
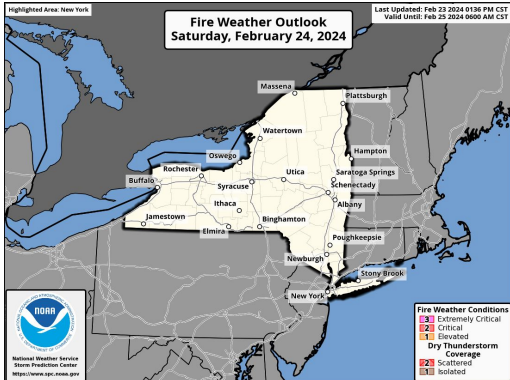
Statewide Fire Weather Information

New York State Briefing Graphics: <https://www.weather.gov/aly/nys>

Fire Weather Watches and Warnings



Graphic Created
February 23rd, 2024
2:30 PM EST





Weather Forecast Matrices

Weather Matrices: <https://www.weather.gov/aly/nysDSSMatrix>

<https://www.weather.gov/aly/NYSThruway>

Display **Winter** Weather Elements now into spring.



Color Coded Weather Impact Matrix

[Weather.gov > Albany, New York](#) > Color Coded Weather Impact Matrix

[Save as Image](#)

Albany, New York
Weather Forecast Office

Impact Matrix for Weather Support (43.0726,-76.2163)
National Weather Service Albany, New York

| | Tue Nov 28 10 am | Tue Nov 28 1 pm | Tue Nov 28 4 pm | Tue Nov 28 7 pm | Tue Nov 28 10 pm | Wed Nov 29 1 am | Wed Nov 29 4 am | Wed Nov 29 7 am | Wed Nov 29 10 am | Wed Nov 29 1 pm | Wed Nov 29 4 pm | Wed Nov 29 7 pm | Wed Nov 29 10 pm | Thu Nov 30 1 am | Thu Nov 30 4 am | Thu Nov 30 7 am | Thu Nov 30 10 am | Thu Nov 30 1 pm | Thu Nov 30 4 pm | Thu Nov 30 7 pm | Thu Nov 30 10 pm | Fri Dec 1 1 am | Fri Dec 1 4 am | Fri Dec 1 7 am | Fri Dec 1 10 am |
|-------------------------|------------------|-----------------|-----------------|-----------------|------------------|-----------------|-----------------|-----------------|------------------|-----------------|-----------------|-----------------|------------------|-----------------|-----------------|-----------------|------------------|-----------------|-----------------|-----------------|------------------|----------------|----------------|----------------|-----------------|
| Temperature | 28°F | 30°F | 30°F | 27°F | 26°F | 25°F | 25°F | 25°F | 26°F | 30°F | 31°F | 30°F | 31°F | 32°F | 33°F | 34°F | 40°F | 43°F | 40°F | 40°F | 41°F | 41°F | 40°F | 41°F | 42°F |
| Wind Chill | 14°F | 18°F | 17°F | 16°F | 16°F | 15°F | 12°F | 13°F | 15°F | 20°F | 21°F | 20°F | 20°F | 21°F | 23°F | 25°F | 27°F | 33°F | 36°F | 31°F | 30°F | 31°F | 30°F | 33°F | 34°F |
| Chance of Precipitation | 12% | 79% | 93% | 93% | 89% | 73% | 37% | 20% | 12% | 33% | 34% | 24% | 23% | 23% | 18% | 18% | 2% | 2% | 0% | 18% | 18% | 46% | 46% | 49% | 49% |
| 3 hour Snowfall | Trace | 1 in | 1 in | 2 in | 3 in | 2 in | Trace | Trace | 0 in | Trace | Trace | Trace | 0 in | 0 in | 0 in | 0 in | 0 in | 0 in | 0 in | 0 in | 0 in | 0 in | 0 in | 0 in | 0 in |
| 3 hour Freezing Rain | 0 in | 0 in | 0 in | 0 in | 0 in | 0 in | 0 in | 0 in | 0 in | 0 in | 0 in | 0 in | 0 in | 0 in | 0 in | 0 in | 0 in | 0 in | 0 in | 0 in | 0 in | 0 in | 0 in | 0 in | 0 in |
| Wind Direction | W | W | WNW | W | WSW | WSW | SW | SW | SSW | S | SSW | SW | SW | SW | SSW | SSW | SSW | SSW | SSW | SSW | SSW | SSW | SSW | SSW | SSW |
| Wind Speed | 19 mph | 21 mph | 20 mph | 16 mph | 13 mph | 13 mph | 17 mph | 16 mph | 13 mph | 13 mph | 12 mph | 12 mph | 12 mph | 12 mph | 11 mph | 10 mph | 11 mph | 11 mph | 13 mph | 20 mph | 21 mph | 22 mph | 21 mph | 17 mph | 14 mph |
| Wind Gust | 28 mph | 30 mph | 31 mph | 23 mph | 20 mph | 20 mph | 25 mph | 24 mph | 20 mph | 18 mph | 18 mph | 18 mph | 18 mph | 17 mph | 17 mph | 15 mph | 16 mph | 17 mph | 20 mph | 30 mph | 32 mph | 35 mph | 32 mph | 25 mph | 21 mph |
| Sky Cover | 53% | 81% | 80% | 100% | 88% | 89% | 60% | 62% | 76% | 88% | 84% | 87% | 65% | 55% | 60% | 73% | 55% | 43% | 54% | 57% | 71% | 80% | 84% | 80% | 87% |

| Impact Level | None | Low | Medium | High | Extreme |
|-------------------------|------------|--------------|----------------|----------------|----------|
| Temperature | >=35°F | 35 to 32°F | 32 to 23°F | 23 to 5°F | <5°F |
| Wind Chill | >=0°F | 0 to -15°F | -15 to -25°F | -25 to -35°F | <-35°F |
| Chance of Precipitation | <=15% | 15 to 30% | 30 to 50% | 50 to 70% | >70% |
| 3 hour Snowfall | <=0.1 in | 0.1 to 1 in | 1 to 3 in | 3 to 5 in | >5 in |
| 3 hour Freezing Rain | <=0 in | 0 to 0.01 in | 0.01 to 0.1 in | 0.1 to 0.25 in | >0.25 in |
| Wind Direction | All Values | | | | |
| Wind Speed | <=15 mph | 15 to 25 mph | 25 to 35 mph | 35 to 45 mph | >45 mph |
| Wind Gust | <=15 mph | 15 to 25 mph | 25 to 35 mph | 35 to 45 mph | >45 mph |
| Sky Cover | <=30% | 30 to 50% | 50 to 70% | >70% | |





Hurricane Awareness Tour

2024 

HURRICANE AWARENESS TOUR

- Tour Hurricane Hunter aircraft NOAA P-3 and USAF WC-130J
- Meet the pilots & flight crew
- Speak with hurricane forecasters
- Meet with local NWS meteorologists and emergency managers
- Learn about weather safety and preparedness



*Planned stop
at Albany Apt
May 7 2024.*

Invites go out
soon.





Summary

- About NOAA's Seasonal Outlooks
- 8-14 Day Outlook
- March 2024 - May 2024 and June 2024 - Aug 2024 Outlooks
- El Niño - First Time in 4 Years
- 2024 Precipitation to Date
- Fire Weather Climatology
- Summary
- Statewide Fire Weather Links
- Hurricane Awareness Tour - May 7, 2024 - Albany Intl Apt





NWS Albany Contact Information

Christopher Gitro

Meteorologist in Charge

christopher.gitro@noaa.gov

(518) 626-7541

Steve DiRienzo

Warning Coordination Meteorologist

stephen.dirienzo@noaa.gov

(518) 626-7542

Michael Main

Meteorologist/Fire Weather Focal Point

michael.main@noaa.gov

(518) 626-7572

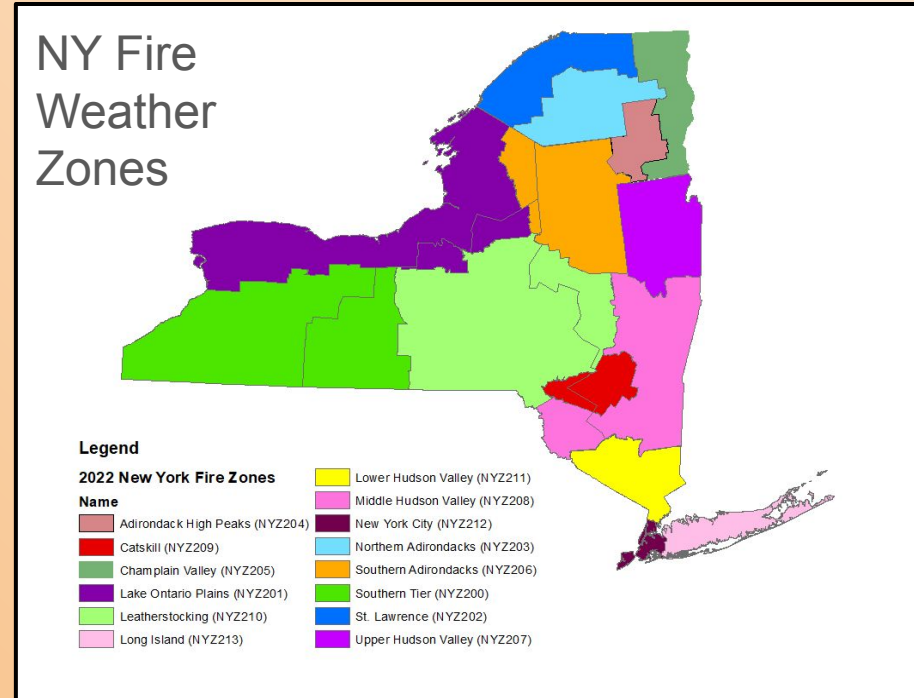


“New” NY Fire Weather Zones

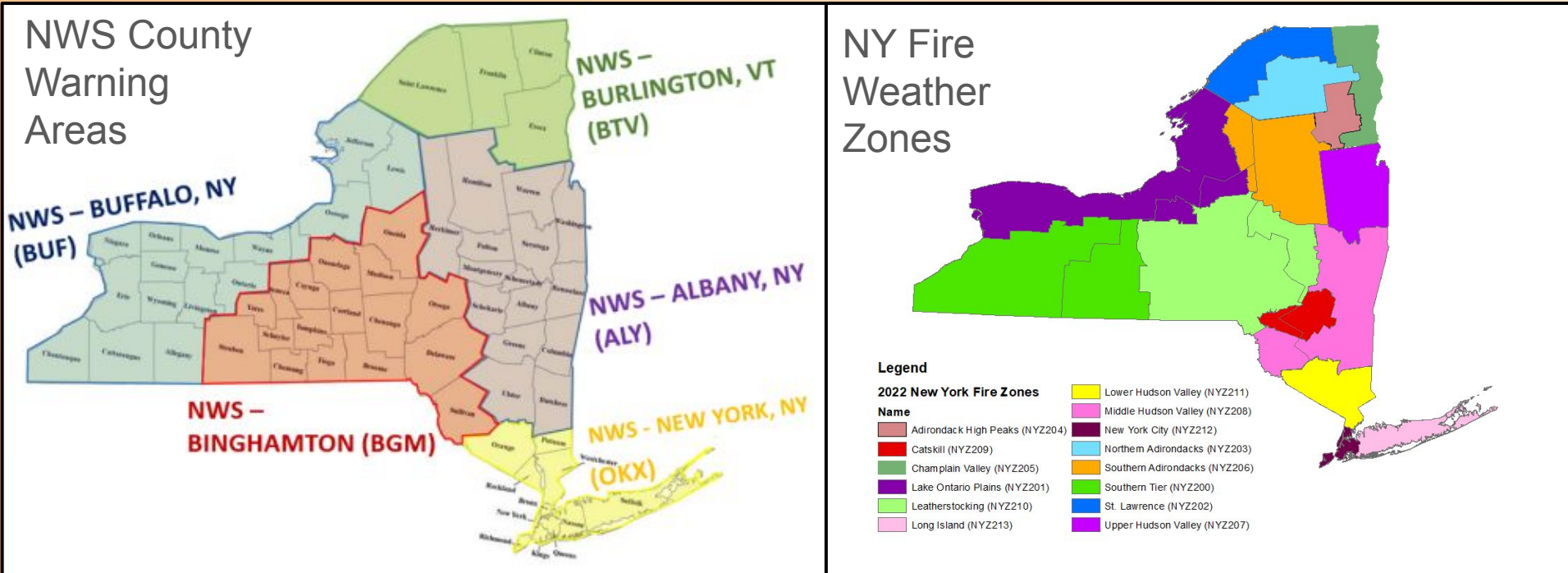
Mike Main, NWS Albany

Refresher on the new NY Fire Weather Zones

- Last year, the NWS and our partners at the DEC agreed to the implementation of 14 new fire weather zones
- These fire weather zones group areas of similar fuels, topography, and weather conditions instead of grouping by counties
- Fire weather zones adhere more closely to FDRA boundaries, making Red Flag coordination and messaging easier



...However, NWS County Warning Areas Do Not Match Fire Weather Zones



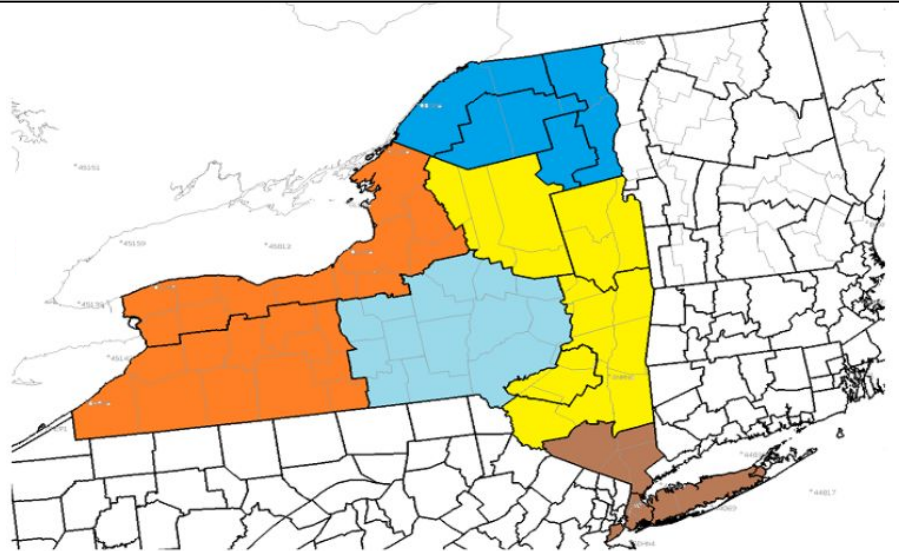
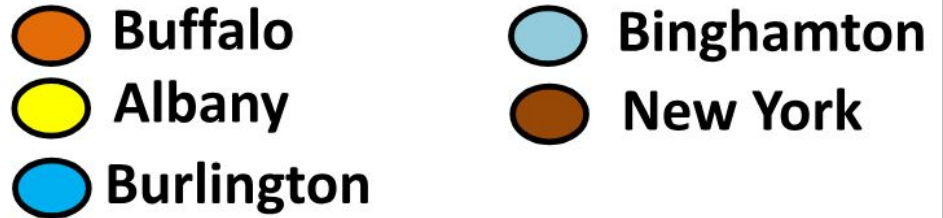
How did implementation of these zones go in 2023?

- Initially, there was confusion due to these inconsistencies
- In an attempt to avoid confusion, the NWS will refer specifically to the affected FDRAs (i.e. saying “Middle Hudson Valley FDRA” instead of “the Mid Hudson Valley”) in our briefings
- Discussion Questions:
 - Does anyone need further clarification on the new fire weather zones?
 - Does referring to the FDRAs in this manner avoid confusion
 - Any other suggestions/things that need to be changed for 2024?

Other Miscellaneous Notes

- Special Weather Statements (SPSs) are still issued by county. Therefore, the area included in an SPS may not exactly match the borders of the FDRA
- Spot forecasts for wildfires and prescribed burns are tied to the new fire weather zones, so don't be surprised if you receive a spot forecast from a different office than in the past for a given location

Spot forecast responsibility



Discussion Topics

RFW/SPS Issuance Discussion Topics

- How did collaboration go last year? Does anything need to change this year?
- Were there any cases where the NWS and DEC disagreed on RFW/SPS issuance last year? If so, how was this resolved? What can be done to make things go smoother going forward?
- When is the best time to collaborate RFW/SPS issuance (morning or afternoon)
- Would it be useful for NWS Albany as the state liaison office to email RH/Wind maps?
- We want to have just 1 call to the FMO/AFMO and avoid early wake up calls

SPS Discussion

- The NWS is looking at defining set criteria (wind, RH) for when an SPS will be issued
 - Currently, there is a lot of “forecaster discretion” involved
 - SPS are usually used when we are close to RFW criteria, but what does “close” mean?
- We are just starting this discussion, don’t have to have an answer today
- Should an SPS be used when 2/3 of wind/RH/fuel criteria are met? What about if all 3 are just short of RFW criteria?
- Will keep option for SPS issuance at the request of the DEC to raise “elevated fire awareness”

Open Discussion - Final Session

- Any lingering questions/comments/concerns
- Is there anything that wasn't addressed in this meeting that you feel needs to be addressed?
- If there's time -
 - How often do you read the fire weather section of the NWS area forecast discussion? Do we need to include it on non-fire weather days
 - Is there any additional information you would like included in the forecast discussion (ie forecast confidence/uncertainty)?
 - How far out (day 2, day 5...) would you like to see us discuss the potential for fire weather?