

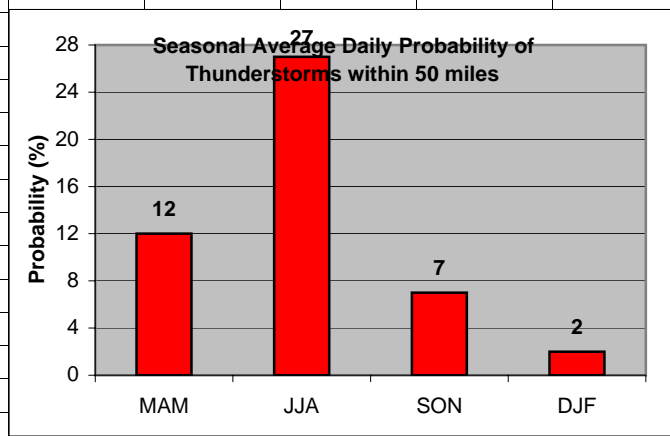
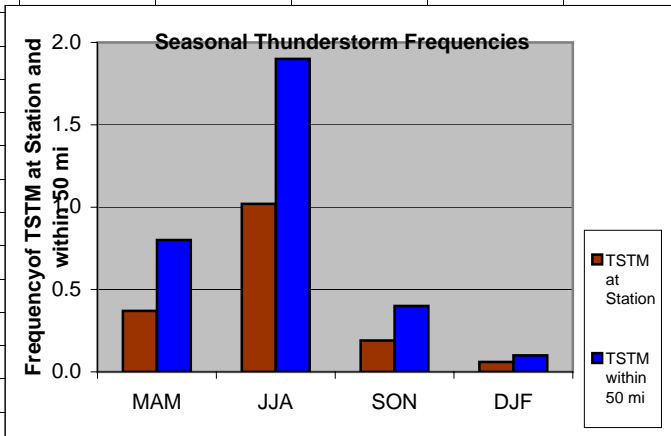
	A	B	C	D	E	F	G	H	I										
1	Wind																		
2																			
3	MAM	0.30																	
4	JJA	0.01																	
5	SON	0.03																	
6	DJF	0.42																	
7				<div data-bbox="877 711 1549 1138" data-label="Figure"> <table border="1"> <caption>Significant Wind Data</caption> <thead> <tr> <th>Season</th> <th>Frequency (%)</th> </tr> </thead> <tbody> <tr> <td>MAM</td> <td>0.30</td> </tr> <tr> <td>JJA</td> <td>0.01</td> </tr> <tr> <td>SON</td> <td>0.03</td> </tr> <tr> <td>DJF</td> <td>0.42</td> </tr> </tbody> </table> </div>						Season	Frequency (%)	MAM	0.30	JJA	0.01	SON	0.03	DJF	0.42
Season	Frequency (%)																		
MAM	0.30																		
JJA	0.01																		
SON	0.03																		
DJF	0.42																		
8																			
9																			
10																			
11																			
12																			
13																			
14																			
15																			
16																			
17																			
18																			
19																			

**Cell:** A1

**Comment:** Charlie Liles:

Significant wind factor: >25kt 280-320.

	A	B	C	D	E	F	G	H	I	J	K
1	Thunderstorms										
2		Station	50 mi			Daily Probability					
3	MAM	0.37	0.8		MAM	12					
4	JJA	1.02	1.9		JJA	27					
5	SON	0.19	0.4		SON	7					
6	DJF	0.06	0.1		DJF	2					
7											
8											
9											
10											
11											
12											
13											
14											
15											
16											
17											
18											
19											
20											

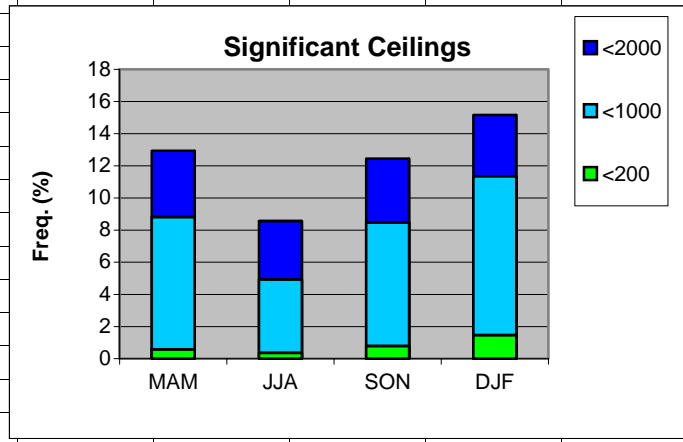


**Cell:** A1

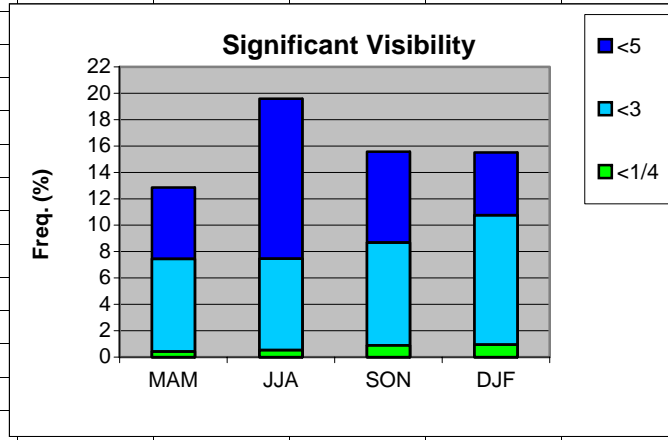
**Comment:** Charlie Liles:

The first graph shows the seasonal average hourly daily frequencies of thunderstorms at the station and within 50 miles. The second graph shows the seasonal average daily probability of thunderstorms within 50 miles of the station.

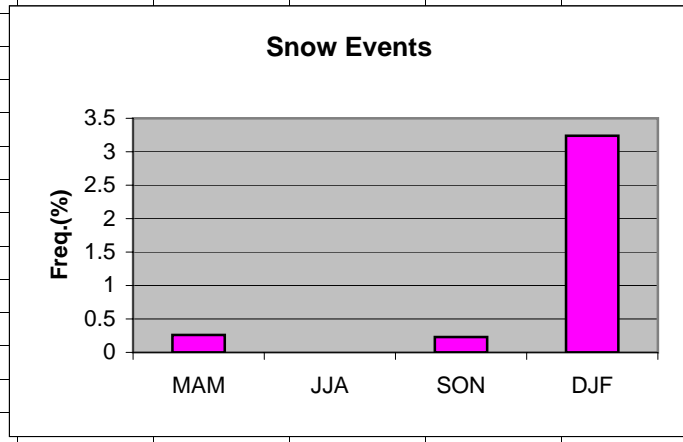
	A	B	C	D	E	F	G	H
1	Ceilings							
2		MAM	JJA	SON	DJF			
3	<2000	12.93	8.56	12.44	15.16			
4	<1000	8.81	4.93	8.46	11.34			
5	<200	0.58	0.36	0.79	1.47			
6								
7								
8								
9								
10								
11								
12								
13								
14								
15								
16								
17								
18								
19								



	A	B	C	D	E	F	G	H
1	Visibility							
2		MAM	JJA	SON	DJF			
3	<5	12.86	19.59	15.57	15.51			
4	<3	7.45	7.46	8.68	10.76			
5	<1/4	0.43	0.53	0.90	0.95			
6								
7								
8								
9								
10								
11								
12								
13								
14								
15								
16								
17								
18								
19								



	A	B	C	D	E	F	G	H
1	Snow events							
2								
3	MAM	0.26						
4	JJA	0						
5	SON	0.23						
6	DJF	3.24						
7								
8								
9								
10								
11								
12								
13								
14								
15								
16								
17								
18								
19								



	A	B	C	D	E	F	G	H
1	Freezing Rain/drizzle/Ice Pellets							
2								
3	MAM	0.22						
4	JJA	0						
5	SON	0.10						
6	DJF	1.21						
7								
8								
9								
10								
11								
12								
13								
14								
15								
16								
17								
18								
19								

