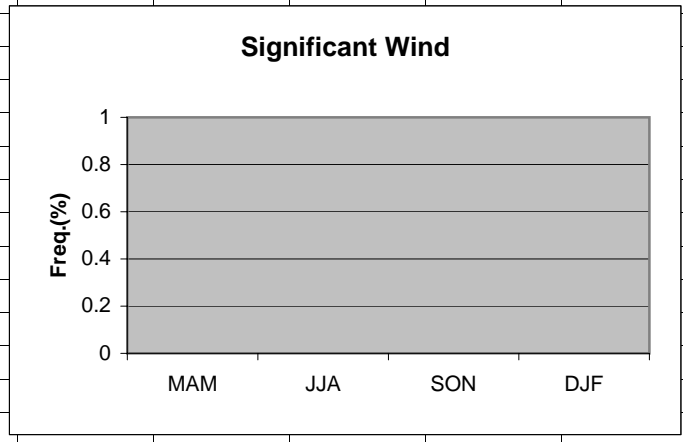


	A	B	C	D	E	F	G	H
1	Wind							
2								
3	MAM	0						
4	JJA	0						
5	SON	0						
6	DJF	0						
7								
8								
9								
10								
11								
12								
13								
14								
15								
16								
17								
18								
19								

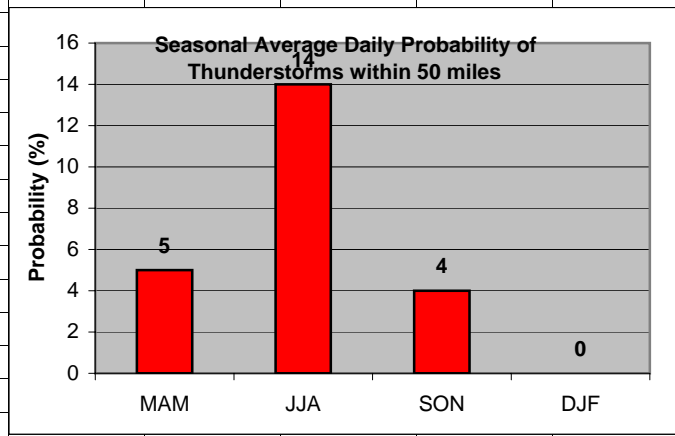
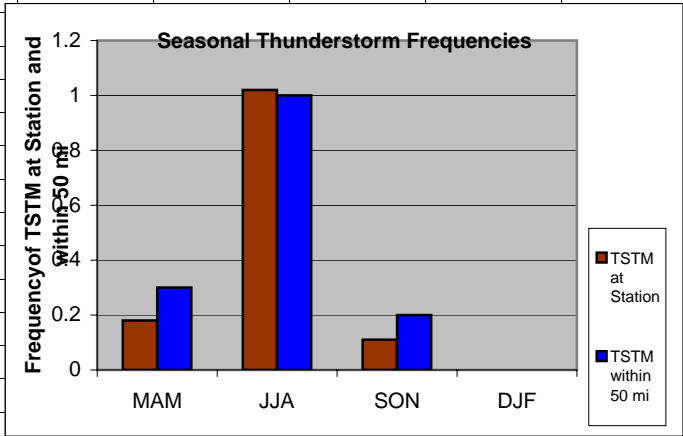


Cell: A1

Comment: Charlie Liles:

No significant wind factors were identified.

	A	B	C	D	E	F	G	H	I	J	K
1	Thunderstorms										
2		Station	50 mi			Daily Probability					
3	MAM	0.18	0.30		MAM	5					
4	JJA	1.02	1.00		JJA	14					
5	SON	0.11	0.20		SON	4					
6	DJF	0	0		DJF	0					
7											
8											
9											
10											
11											
12											
13											
14											
15											
16											
17											
18											
19											
20											



Cell: A1

Comment: Charlie Liles:

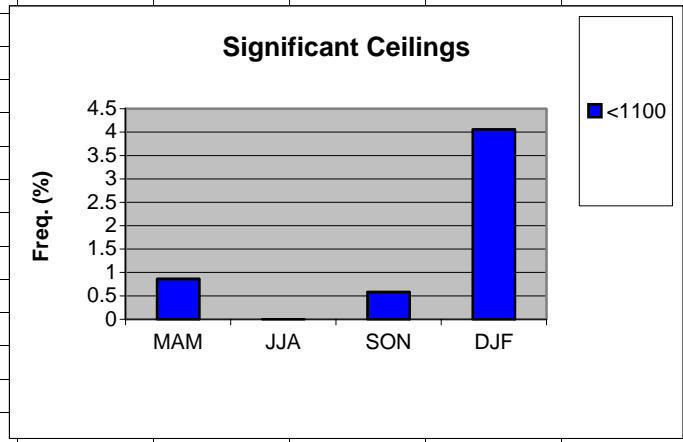
The first graph shows the seasonal average hourly daily frequencies of thunderstorms at the station and within 50 miles. The second graph shows the seasonal average daily probability of thunderstorms within 50 miles of the station.

Cell: C2

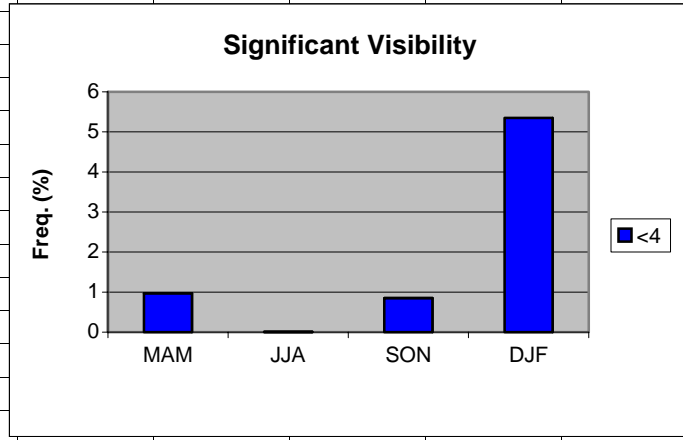
Comment: Charlie Liles:

Lightning archive data produced an unexpected result, with the JJA period thunderstorm frequency within 50 miles less than the station frequency.

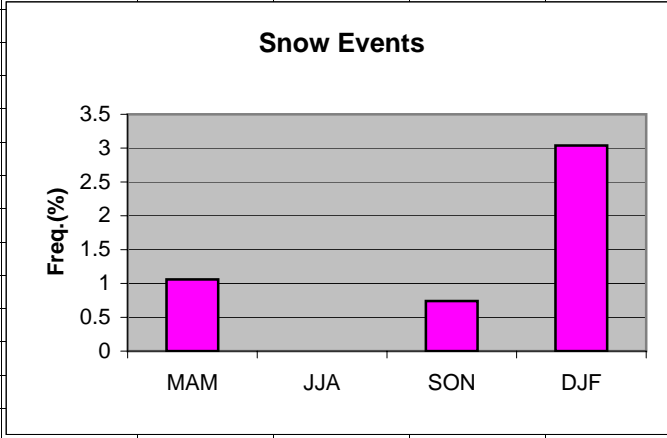
	A	B	C	D	E	F	G	H
1	Ceilings							
2		MAM	JJA	SON	DJF			
3	<1100	0.86	0	0.58	4.06			
4								
5								
6								
7								
8								
9								
10								
11								
12								
13								
14								
15								
16								
17								
18								
19								



	A	B	C	D	E	F	G	H
1	Visibility							
2		MAM	JJA	SON	DJF			
3	<4	0.97	0.01	0.85	5.35			
4								
5								
6								
7								
8								
9								
10								
11								
12								
13								
14								
15								
16								
17								
18								
19								



	A	B	C	D	E	F	G	H
1	Snow events							
2								
3	MAM	1.06						
4	JJA	0						
5	SON	0.74						
6	DJF	3.04						
7								
8								
9								
10								
11								
12								
13								
14								
15								
16								
17								
18								
19								



	A	B	C	D	E	F	G	H
1	Freezing Rain/drizzle/Ice Pellets							
2								
3	MAM	0						
4	JJA	0						
5	SON	0.01						
6	DJF	0.09						
7								
8								
9								
10								
11								
12								
13								
14								
15								
16								
17								
18								
19								

