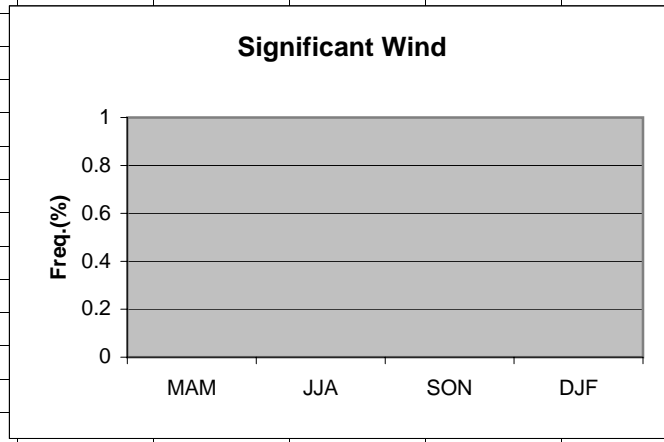


	A	B	C	D	E	F	G	H
1	Wind							
2								
3	MAM	0						
4	JJA	0						
5	SON	0						
6	DJF	0						
7								
8								
9								
10								
11								
12								
13								
14								
15								
16								
17								
18								
19								

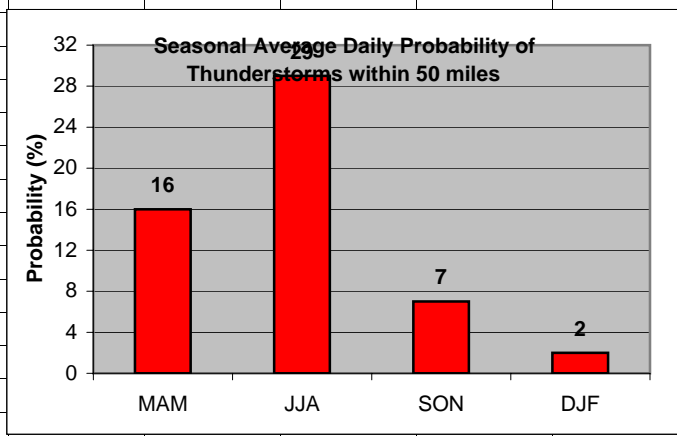
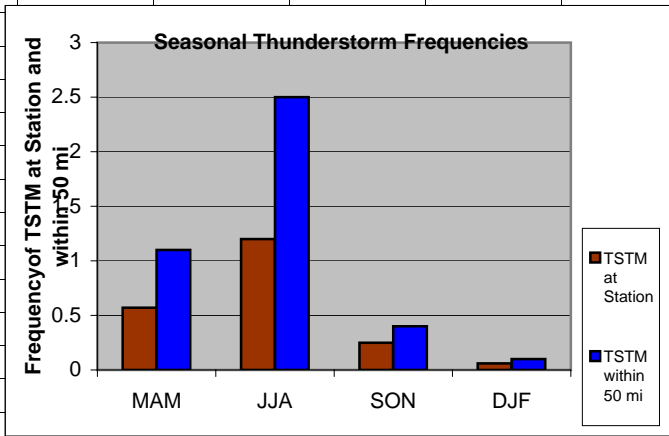


**Cell:** A1

**Comment:** Charlie Liles:

Significant wind factors: >35kt 330-030, <35kt 150-210.

	A	B	C	D	E	F	G	H	I	J	K
1	Thunderstorms										
2		Station	50 mi			Daily Probability					
3	MAM	0.57	1.10		MAM	16					
4	JJA	1.2	2.50		JJA	29					
5	SON	0.25	0.40		SON	7					
6	DJF	0.06	0.10		DJF	2					
7											
8											
9											
10											
11											
12											
13											
14											
15											
16											
17											
18											
19											
20											

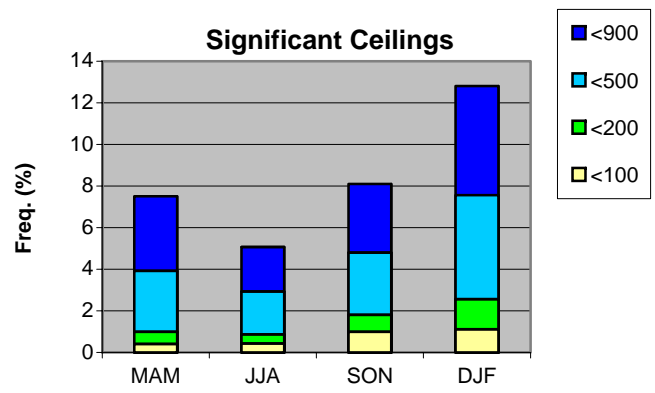


**Cell:** A1

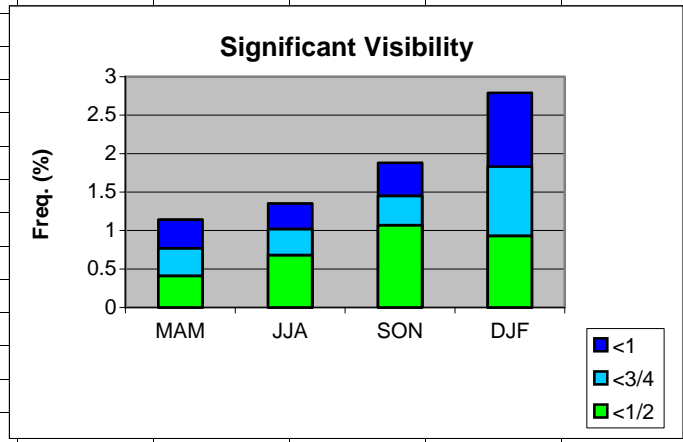
**Comment:** Charlie Liles:

The first graph shows the seasonal average hourly daily frequencies of thunderstorms at the station and within 50 miles. The second graph shows the seasonal average daily probability of thunderstorms within 50 miles of the station.

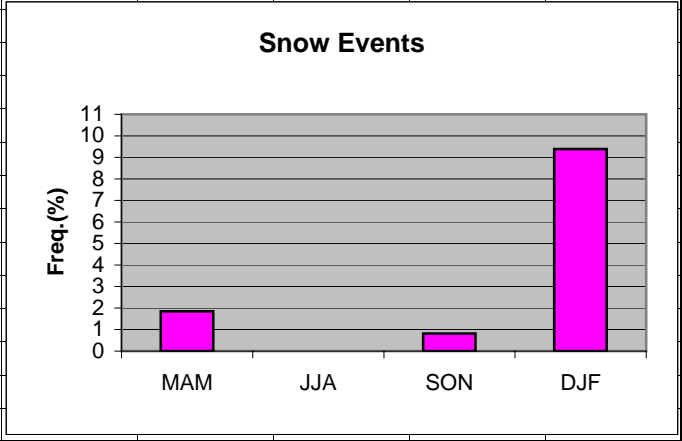
	A	B	C	D	E	F	G
1	Ceilings						
2		MAM	JJA	SON	DJF		
3	<900	7.51	5.07	8.10	12.81		
4	<500	3.92	2.93	4.80	7.56		
5	<200	0.99	0.87	1.81	2.56		
6	<100	0.41	0.43	0.99	1.12		
7							
8							
9							
10							
11							
12							
13							
14							
15							
16							
17							
18							
19							
20							
21							



	A	B	C	D	E	F	G	H
1	Visibility							
2		MAM	JJA	SON	DJF			
3	<1	1.14	1.35	1.88	2.79			
4	<3/4	0.77	1.02	1.45	1.83			
5	<1/2	0.41	0.68	1.07	0.93			
6								
7								
8								
9								
10								
11								
12								
13								
14								
15								
16								
17								
18								
19								



	A	B	C	D	E	F	G	H
1	Snow events							
2								
3	MAM	1.85						
4	JJA	0						
5	SON	0.82						
6	DJF	9.39						
7								
8								
9								
10								
11								
12								
13								
14								
15								
16								
17								
18								
19								



	A	B	C	D	E	F	G	H
1	Freezing Rain/drizzle/Ice Pellets							
2								
3	MAM	0.13						
4	JJA	0						
5	SON	0.03						
6	DJF	0.97						
7								
8								
9								
10								
11								
12								
13								
14								
15								
16								
17								
18								
19								

