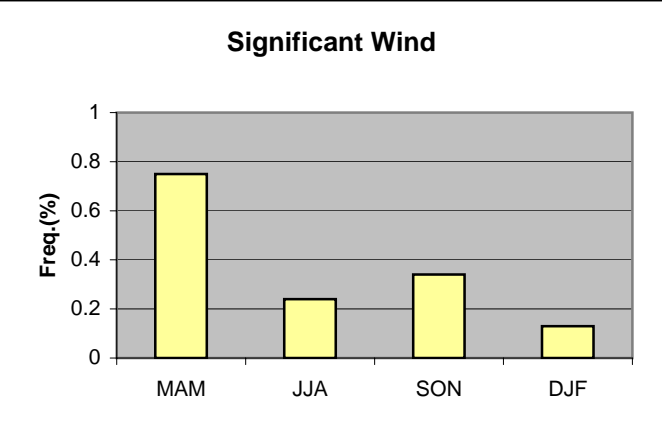


	A	B	C	D	E	F	G	H	I	J	K
1	Wind										
2											
3	MAM	0.75									
4	JJA	0.24									
5	SON	0.34									
6	DJF	0.13									
7			MAM	JJA	SON	DJF					
8	>20kt 020-060		0.20	0.01	0.06	0.03					
9	>20kt 200-240		0.55	0.23	0.28	0.10					
10											
11											
12											
13											
14											
15											
16											
17											
18											

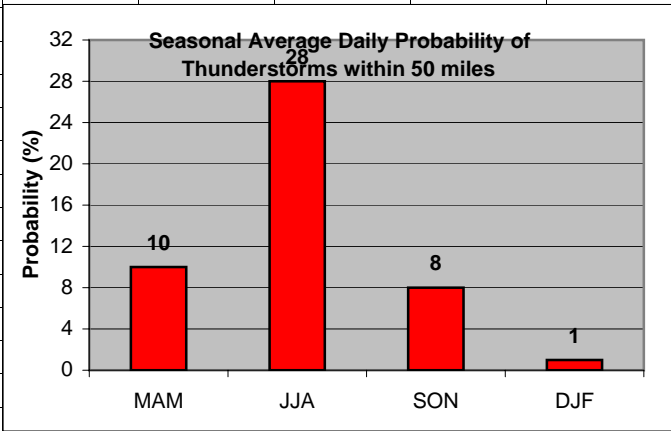
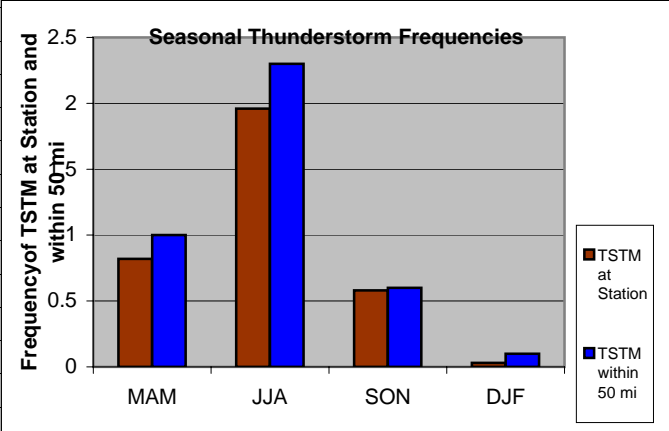


Cell: A1

Comment: Charlie Liles:

Significant wind factors: >20kt 020-060, >20kt 200-240. Criteria is 25kt with dry runways and 20 kt for wet runways but query was made for 20kt.

	A	B	C	D	E	F	G	H	I	J	K
1	Thunderstorms										
2		Station	50 mi			Daily Probability					
3	MAM	0.82	1.00		MAM	10					
4	JJA	1.96	2.3		JJA	28					
5	SON	0.58	0.6		SON	8					
6	DJF	0.03	0.1		DJF	1					
7											
8											
9											
10											
11											
12											
13											
14											
15											
16											
17											
18											
19											
20											

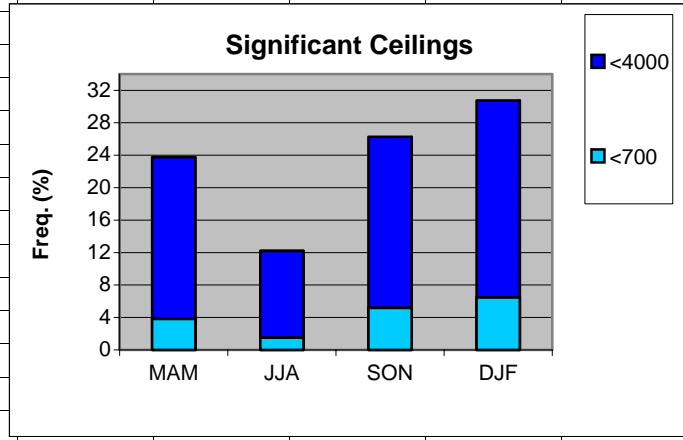


Cell: A1

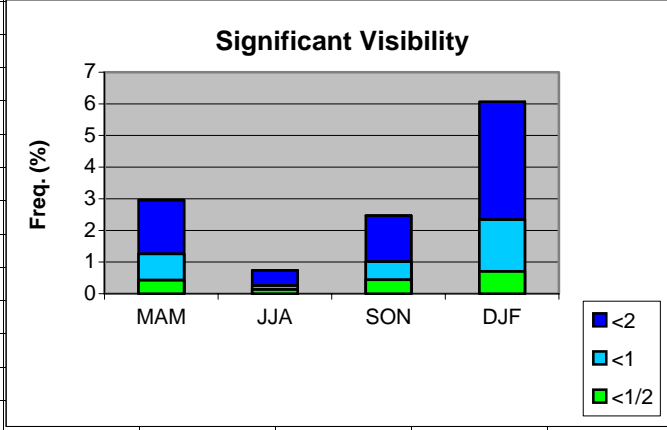
Comment: Charlie Liles:

The first graph shows the seasonal average hourly daily frequencies of thunderstorms at the station and within 50 miles. The second graph shows the seasonal average daily probability of thunderstorms within 50 miles of the station.

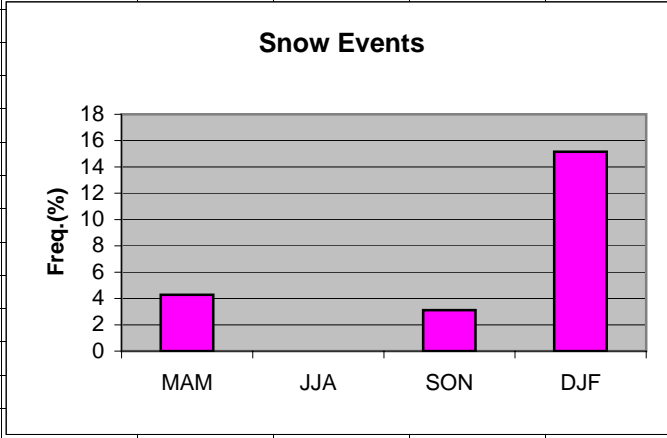
	A	B	C	D	E	F	G	H
1	Ceilings							
2		MAM	JJA	SON	DJF			
3	<4000	23.76	12.20	26.27	30.75			
4	<700	3.82	1.51	5.19	6.48			
5								
6								
7								
8								
9								
10								
11								
12								
13								
14								
15								
16								
17								
18								
19								



	A	B	C	D	E	F	G
1	Visibility						
2		MAM	JJA	SON	DJF		
3	<2	2.96	0.74	2.47	6.07		
4	<1	1.26	0.26	1.01	2.34		
5	<1/2	0.43	0.14	0.44	0.71		
6							
7							
8							
9							
10							
11							
12							
13							
14							
15							
16							
17							
18							
19							



	A	B	C	D	E	F	G	H
1	Snow events							
2								
3	MAM	4.28						
4	JJA	0						
5	SON	3.11						
6	DJF	15.15						
7								
8								
9								
10								
11								
12								
13								
14								
15								
16								
17								
18								
19								



	A	B	C	D	E	F	G	H
1	Freezing Rain/drizzle/Ice Pellets							
2								
3	MAM	0.32						
4	JJA	0						
5	SON	0.2						
6	DJF	1.15						
7								
8								
9								
10								
11								
12								
13								
14								
15								
16								
17								
18								
19								

