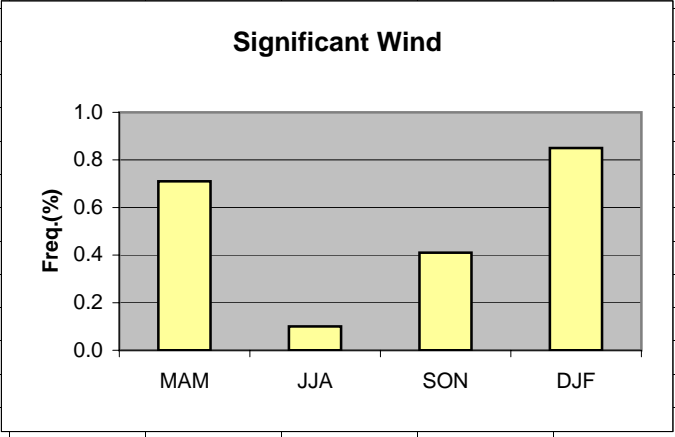


	A	B	C	D	E	F	G	H
1	Wind							
2								
3	MAM	0.71						
4	JJA	0.10						
5	SON	0.41						
6	DJF	0.85						
7								
8								
9								
10								
11								
12								
13								
14								
15								
16								
17								
18								
19								



Cell: A1

Comment: Charlie Liles:

Significant wind factor: >20kt any direction.

Cell: A1

Comment: Charlie Liles:

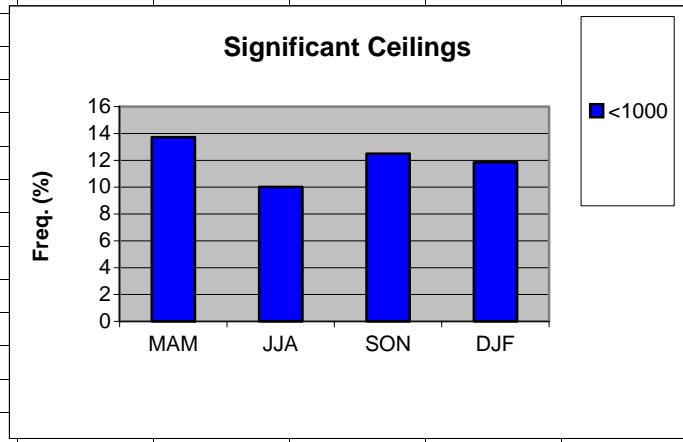
The first graph shows the seasonal average hourly daily frequencies of thunderstorms at the station and within 50 miles. The second graph shows the seasonal average daily probability of thunderstorms within 50 miles of the station.

Cell: C2

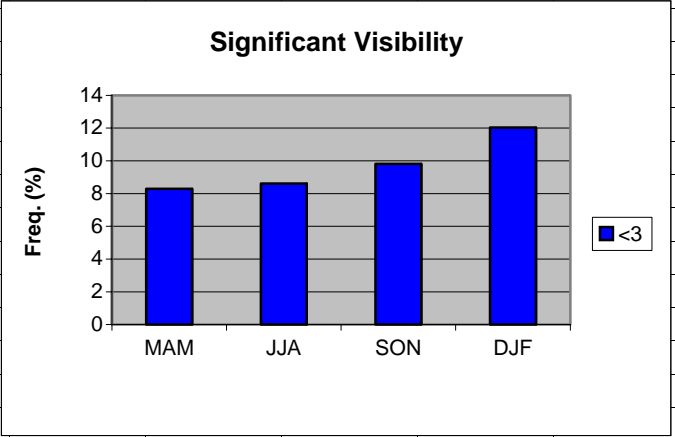
Comment: Charlie Liles:

The lightning data produced an unexpected frequency for the SON period that was slightly less than station frequency.

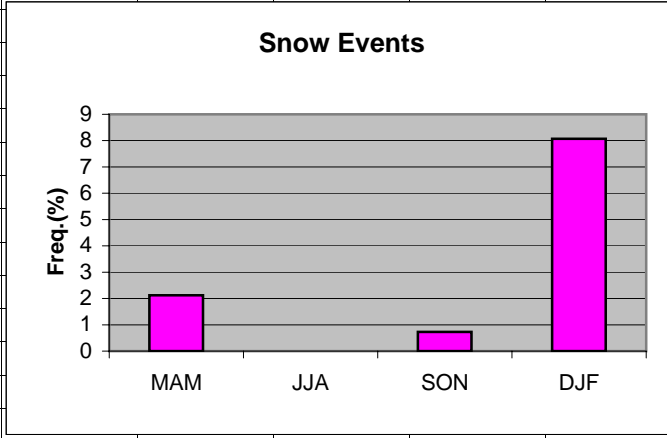
	A	B	C	D	E	F	G	H
1	Ceilings							
2		MAM	JJA	SON	DJF			
3	<1000	13.72	10.02	12.50	11.85			
4								
5								
6								
7								
8								
9								
10								
11								
12								
13								
14								
15								
16								
17								
18								
19								



	A	B	C	D	E	F	G	H
1	Visibility							
2								
3		MAM	JJA	SON	DJF			
4	<3	8.29	8.61	9.81	12.03			
5								
6								
7								
8								
9								
10								
11								
12								
13								
14								
15								
16								
17								
18								
19								



	A	B	C	D	E	F	G	H
1	Snow events							
2								
3	MAM	2.12						
4	JJA	0						
5	SON	0.73						
6	DJF	8.07						
7								
8								
9								
10								
11								
12								
13								
14								
15								
16								
17								
18								
19								



	A	B	C	D	E	F	G	H
1	Freezing Rain/drizzle/Ice Pellets							
2								
3	MAM	0.36						
4	JJA	0.05						
5	SON	0.06						
6	DJF	1.51						
7								
8								
9								
10								
11								
12								
13								
14								
15								
16								
17								
18								
19								

