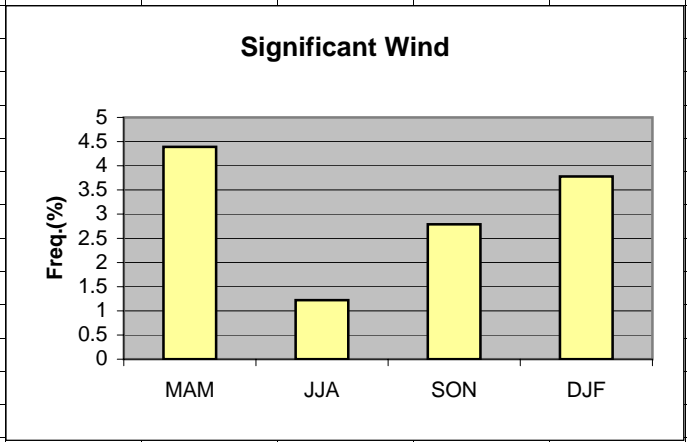


	A	B	C	D	E	F	G	H	I	J	K	L
1	Wind											
2												
3	MAM	4.39										
4	JJA	1.22										
5	SON	2.79										
6	DJF	3.78										
7			MAM	JJA	SON	DJF						
8	>12kt 360-070		2.31	0.91	1.75	2.01						
9	>15kt 300-330		2.08	0.30	1.04	1.77						
10	>25kt 060-110		0	0.01	0	0						
11												
12												
13												
14												
15												
16												
17												
18												

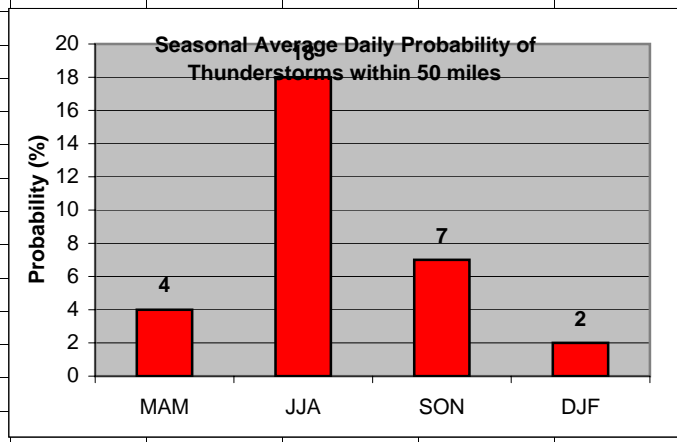
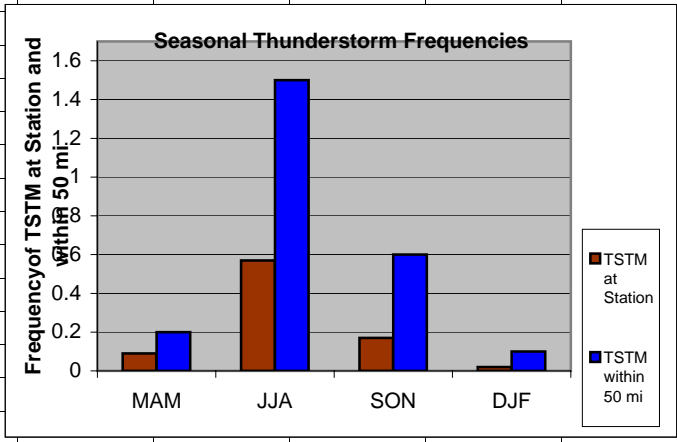


**Cell:** A1

**Comment:** Charlie Liles:

Significant wind factors: >12kt 360-070, >15kt 300-330, >25kt 060-110.

	A	B	C	D	E	F	G	H	I	J	K
1	Thunderstorms										
2		Station	50 mi			Daily Probability					
3	MAM	0.09	0.20		MAM	4					
4	JJA	0.57	1.50		JJA	18					
5	SON	0.17	0.60		SON	7					
6	DJF	0.02	0.10		DJF	2					
7											
8											
9											
10											
11											
12											
13											
14											
15											
16											
17											
18											
19											
20											

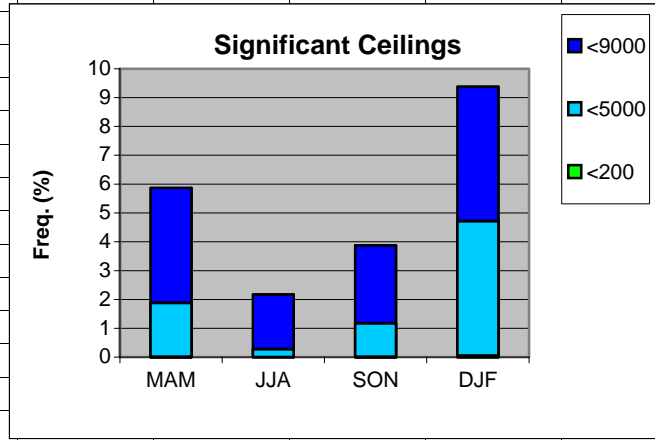


**Cell:** A1

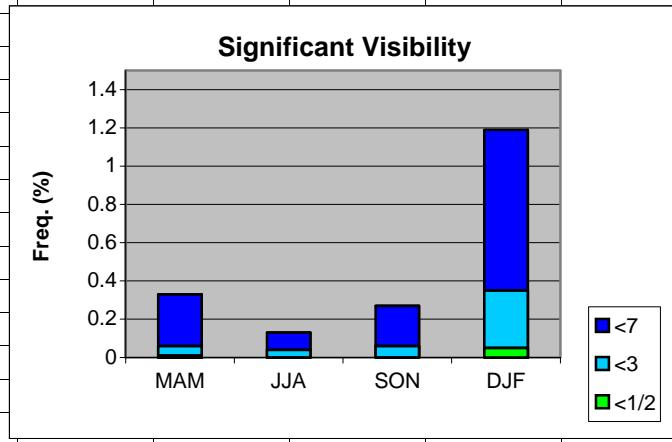
**Comment:** Charlie Liles:

The first graph shows the seasonal average hourly daily frequencies of thunderstorms at the station and within 50 miles. The second graph shows the seasonal average daily probability of thunderstorms within 50 miles of the station.

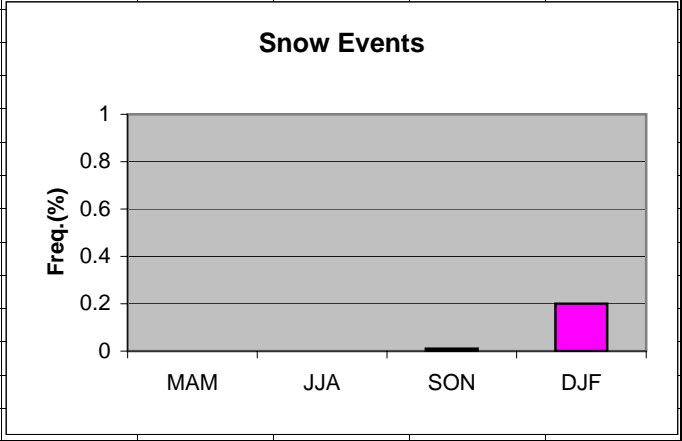
	A	B	C	D	E	F	G	H
1	Ceilings							
2		MAM	JJA	SON	DJF			
3	<9000	5.87	2.17	3.88	9.38			
4	<5000	1.88	0.28	1.18	4.72			
5	<200	0.01	0	0.01	0.05			
6								
7								
8								
9								
10								
11								
12								
13								
14								
15								
16								
17								
18								
19								



	A	B	C	D	E	F	G	H
1	Visibility							
2		MAM	JJA	SON	DJF			
3	<7	0.33	0.13	0.27	1.19			
4	<3	0.06	0.04	0.06	0.35			
5	<1/2	0.01	0	0	0.05			
6								
7								
8								
9								
10								
11								
12								
13								
14								
15								
16								
17								
18								
19								



	A	B	C	D	E	F	G	H
1	Snow events							
2								
3	MAM	0						
4	JJA	0						
5	SON	0.01						
6	DJF	0.20						
7								
8								
9								
10								
11								
12								
13								
14								
15								
16								
17								
18								
19								



	A	B	C	D	E	F	G	H
1	Freezing Rain/drizzle/Ice Pellets							
2								
3	MAM	0						
4	JJA	0						
5	SON	0						
6	DJF	0						
7								
8								
9								
10								
11								
12								
13								
14								
15								
16								
17								
18								
19								

