

## **WINTER STORM SUMMARY FOR DECEMBER 26, 2010 TO DECEMBER 27, 2010 EVENT**

### **Synopsis**

A strong Nor'easter system impacted the Middle Atlantic region starting early Sunday morning December 26th and ending on Monday December 27th. At 7AM on the 26th, the center of the low pressure was sitting just offshore of Cape Hatteras and the northern most extent of its snow bands had started to fall across the Delmarva Peninsula and the southern most counties in New Jersey. By noon on Sunday the 26th, snow had begun to fall in the Philadelphia Metro region and continued to overspread towards the north during the remainder of the day. Heavy snow bands formed offshore during the afternoon and evening hours on the 26th as the low continued to strengthen. The heavy bands pushed into the coastal counties in New Jersey with continued 2 to 3 inch an hour snowfall rates during the evening and overnight hours on the 26th. As the low pressure system moved along the Eastern United States coast it rapidly intensified dropping 24 millibars in 24 hours to a minimum pressure of 976 millibars by 7AM Monday the 27th. At this time the low was centered over Cape Cod Massachusetts and the snow was beginning to end from South to North through our region. By mid-day on the 27th the snow had come to end across our region.

### **Watches/Warnings/Advisories**

A Winter Storm Watch was issued at 416am on Saturday December 25th for the following areas: New Castle, Kent, and Sussex in Delaware; Cecil, Kent, Queen Annes, Talbot, and Caroline in Maryland; Sussex, Warren, Morris, Hunterdon, Somerset, Middlesex, Monmouth, Mercer, Salem, Gloucester, Camden, Burlington, Ocean, Cumberland, Atlantic, and Cape May in New Jersey; Chester, Montgomery, Bucks, Delaware, and Philadelphia in Pennsylvania. At 1148am on December 25th a Winter Storm Watch was issued for Carbon, Monroe, Berks, Lehigh, and Northampton in Pennsylvania. At 324pm on December 25th, the Winter Storm Watch was upgraded to a Winter Storm Warning for the following areas: New Castle, Kent, and Sussex in Delaware; Cecil, Kent, Queen Annes, Talbot, and Caroline in Maryland; Sussex, Warren, Morris, Hunterdon, Somerset, Middlesex, Monmouth, Mercer, Salem, Gloucester, Camden, Burlington, Ocean, Cumberland, Atlantic, and Cape May in New Jersey; Carbon, Monroe, Berks, Lehigh, Northampton, Chester, Montgomery, Bucks, Delaware, and Philadelphia in Pennsylvania. At 352am on December 26th the Winter Storm Warning was replaced with a Blizzard Warning for the following areas: Morris, Somerset, Middlesex, Monmouth, and Ocean in New Jersey. At 310pm on December 26th the Winter Storm Warning was replaced with a Blizzard Warning for the following areas: Sussex in Delaware; Atlantic, Cape May, and Southeastern Burlington in New Jersey. At 350am on December 27th the Blizzard Warning was canceled for Sussex in Delaware and the Winter Storm Warning was canceled for Talbot and Caroline in Maryland; Carbon in Pennsylvania. At 414am on December 27th a Wind Advisory was issued for the following areas: New Castle, Kent, and Sussex in Delaware; Cecil, Kent, Queen Annes, Talbot, and Caroline in Maryland; Sussex, Warren, Morris, Hunterdon, Somerset, Middlesex, Monmouth, Mercer, Salem, Gloucester, Camden, Burlington, Ocean, Cumberland, Atlantic, and Cape May in New Jersey; Carbon, Monroe, Berks, Lehigh, Northampton, Chester, Montgomery, Bucks, Delaware, and Philadelphia in Pennsylvania. At 526am on December 27th the Winter Storm Warning was canceled for the following areas: New Castle, Kent, and Sussex in Delaware; Cecil, Kent, Queen Annes, Talbot, and Caroline in

Maryland; Sussex, Warren, Hunterdon, Mercer, Salem, Gloucester, Camden, Northwest Burlington, and Cumberland in New Jersey; Monroe, Berks, Lehigh, Northampton, Chester, Montgomery, Bucks, Delaware, and Philadelphia in Pennsylvania. At 651am on December 27th the Blizzard Warning was cancelled in the following areas: Morris, Somerset, Middlesex, Monmouth, Ocean, and Southeastern Burlington in New Jersey. At 753am on December 27th the Blizzard Warning was canceled for the following areas: Atlantic, and Cape May in New Jersey.

### **Precipitation/Temperatures/Winds**

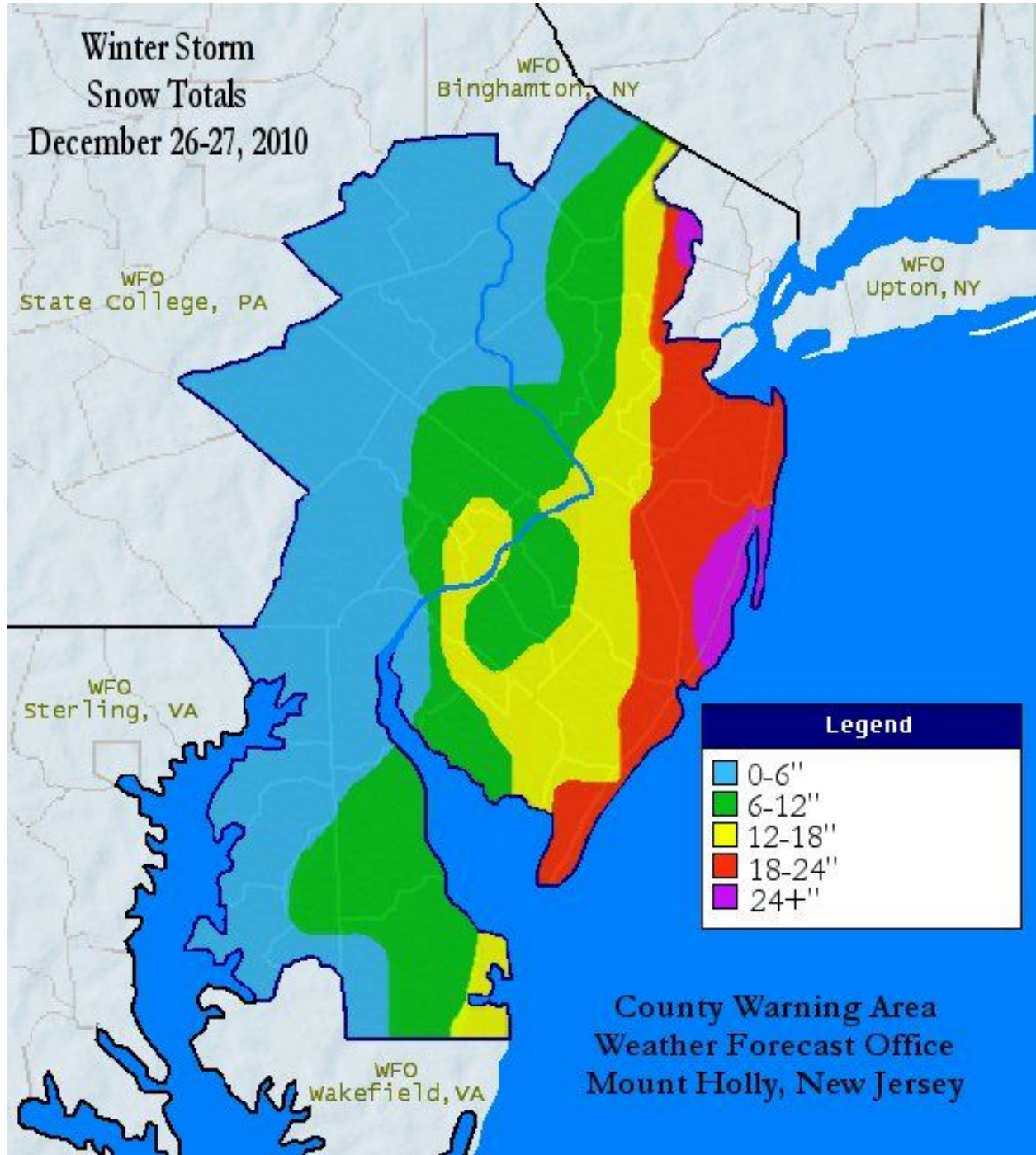
Significant accumulations were received across the Philadelphia Metro region and Eastern New Jersey. Atlantic City New Jersey (measured at the airport in Pomona) set an *ALL* time record for a single snowfall total of 20.1 inches. Numerous locations along the New Jersey coast received 20 inch or higher amounts, with the greatest snowfall measurement of 30 inches taken in Brick Township in New Jersey. Due to the offshore track of the nor'easter, the western counties in our forecast area did not receive as much snow as the eastern counties. Berks, Lehigh, Northampton, Carbon, and Monroe counties in Pennsylvania; Cecil, Talbot, Kent, and Queen Annes counties in Maryland, received only 1 to 3 inches during the storm. Traveling further east, towards the coast, Cape May, Atlantic, Ocean, Monmouth, and Middlesex counties in New Jersey totaled 18 to 24 inches of snow, with more localized pockets of 24 inches or more along the immediate coast.

Gusty northwest winds were also a factor with this coastal storm. Some of the highest wind gusts recorded include 62 mph measured at Wilmington, DE; 61 mph measured in Long Beach, New Jersey; 56 mph measured in Sandy Hook, New Jersey; and 62 mph measured in Mount Pocono, Pennsylvania. Wind gusts in excess of 50 mph were measured across much of the forecast area. Strong winds along with the falling snow created reduced visibilities and blizzard or near-blizzard conditions at times, especially along the New Jersey coastline.

### **Significant Impacts/Aspects**

Multiple heavy snow bands traversed the region producing 2 to 3 inch an hour snowfall rates during the evening hours across Eastern New Jersey. A few of these bands were able to make it into the Philadelphia metro region later Sunday night producing 1 to 2 inch an hour snowfall rates. At the peak of the storm, strong winds greatly reduced visibilities and created impassable roadways throughout the region. Numerous traffic backups and accidents occurred across New Jersey and Pennsylvania roadways on Sunday and Monday. Portions of the Garden State Parkway were shutdown with hundreds of cars left stranded. Snow drifts reached 8 to 9 feet in some locations and turned a once clear, plowed road, into an impassable piece of asphalt. At approximately 8pm on Sunday December 26th, during the peak of the storm, a state of emergency was declared for New Jersey by the acting Governor. The Philadelphia Eagles were scheduled to play football at 8pm Sunday night in Philadelphia, but the National Football League, fearing for fans safety during the worst of the storm, decided to postpone the game until the following Tuesday night.

**Notes: Information contained in this summary is preliminary. More complete and/or detailed information may be contained in subsequent monthly NOAA storm data publications.**



NOUS41 KPHI 280021

PNSPHI

DEZ001>004-MDZ008-012-015-019-020-NJZ001-007>010-012>027-PAZ054-055-060>062-067>071-280400-

PUBLIC INFORMATION STATEMENT  
SPOTTER REPORTS

NATIONAL WEATHER SERVICE MOUNT HOLLY NJ  
720 PM EST MON DEC 27 2010

THE FOLLOWING ARE UNOFFICIAL OBSERVATIONS TAKEN DURING THE PAST 18 HOURS FOR THE STORM THAT HAS AFFECTED OUR REGION. APPRECIATION IS EXTENDED TO COOPERATIVE OBSERVERS AND SKYWARN SPOTTERS FOR THESE REPORTS. THIS SUMMARY IS ALSO AVAILABLE ON OUR HOME PAGE AT WEATHER.GOV/PHI

\*\*\*\*\*STORM TOTAL SNOWFALL\*\*\*\*\*

LOCATION	STORM TOTAL SNOWFALL /INCHES/	TIME/DATE OF MEASUREMENT	COMMENTS
----------	-------------------------------------	--------------------------------	----------

DELAWARE

...KENT COUNTY...

WOODBURY	11.7	844 AM 12/27	
DOVER	9.0	1251 PM 12/27	
HARRINGTON	8.2	1128 AM 12/27	DEOS
WOODSIDE	8.0	1103 AM 12/27	
VIOLA	6.9	1128 AM 12/27	DEOS
2 E PEARSONS CORNER	6.0	1138 AM 12/27	
GREENVILLE	3.0	1124 AM 12/27	DEOS

...NEW CASTLE COUNTY...

BLACKBIRD	4.0	1127 AM 12/27	DEOS
BEAR	3.5	954 AM 12/27	CO-OP
WILMINGTON	3.5	955 AM 12/27	AIRPORT
HOCKESSIN	3.2	1125 AM 12/27	DEOS
PRICES CORNER	2.8	1125 AM 12/27	DEOS
CLAYMONT	2.2	1124 AM 12/27	DEOS
NEWARK	2.2	930 AM 12/27	

...SUSSEX COUNTY...

STOCKLEY	11.7	1129 AM 12/27	DEOS
SELBYVILLE	11.3	1129 AM 12/27	DEOS
ELLENDALE	9.0	1129 AM 12/27	DEOS
LAUREL	4.8	1130 AM 12/27	DEOS
BRIDGEVILLE	4.7	1130 AM 12/27	DEOS

MARYLAND

...CECIL COUNTY...

CONOWINGO	4.0	903 AM 12/27	
-----------	-----	--------------	--

...KENT COUNTY...

MILLINGTON 5.5 1100 AM 12/27

...QUEEN ANNE`S COUNTY...

STEVENSVILLE 2.0 1103 AM 12/27

NEW JERSEY

...ATLANTIC COUNTY...

ATLANTIC CITY 20.1 336 PM 12/27 INTL AIRPORT

PLEASANTVILLE 20.1 346 PM 12/27

ABSECON 20.0 1113 AM 12/27

ESTELL MANOR 16.5 934 AM 12/27 CO-OP

SOMERS POINT 16.0 1219 AM 12/27

...BURLINGTON COUNTY...

WRIGHTSTOWN 19.2 1036 AM 12/27 CO-OP

CHESTERFIELD 19.0 1056 AM 12/27

SOUTHAMPTON TWP 18.0 951 AM 12/27

TABERNACLE 16.5 1136 AM 12/27

CROSSWICKS 16.0 918 AM 12/27

BROWN MILLS 16.0 1138 AM 12/27

MOUNT HOLLY 12.9 811 AM 12/27

MARLTON 12.0 958 AM 12/27

MOUNT LAUREL 10.0 818 AM 12/27

MAPLE SHADE 10.0 902 AM 12/27

MOORESTOWN 9.8 902 AM 12/27

...CAMDEN COUNTY...

PENNSAUKEN 12.0 856 AM 12/27 CO-OP

SOMERDALE 10.2 930 AM 12/27

LINDENWOLD 8.8 934 AM 12/27

...CAPE MAY COUNTY...

DENNISVILLE 26.5 947 AM 12/27

ELDORA 25.0 946 AM 12/27

ERMA 22.0 945 AM 12/27

NORTH CAPE MAY 21.0 945 AM 12/27

GREEN CREEK 18.5 944 AM 12/27

SCOTCH BONNET 17.0 946 AM 12/27

SWAINTON 16.0 923 AM 12/27

SEAVILLE 16.0 944 AM 12/27

WEST CAPE MAY 15.2 902 AM 12/27 CO-OP

WOODBINE 15.0 945 AM 12/27

BEESELEYS POINT 13.0 945 AM 12/27

...CUMBERLAND COUNTY...

VINELAND 18.7 147 PM 12/27

CEDARVILLE	11.5	1136 AM	12/27	
HOPEWELL TWP	8.0	146 PM	12/27	
...GLOUCESTER COUNTY...				
MALAGA	13.5	141 PM	12/27	
SEWELL	12.8	1250 PM	12/27	
VERGA	12.4	1107 AM	12/27	
NATIONAL PARK	12.4	817 AM	12/27	
SWEDESBORO	12.0	918 AM	12/27	
GLASSBORO	8.2	932 AM	12/27	
...HUNTERDON COUNTY...				
WERTSVILLE	6.0	1047 AM	12/27	CO-OP
CLINTON	5.7	230 AM	12/27	
FLEMINGTON	4.5	1057 AM	12/27	
...MERCER COUNTY...				
WHITE HORSE	16.0	924 AM	12/27	
PRINCETON JUNCTION	16.0	1100 AM	12/27	
PRINCETON	15.0	931 AM	12/27	
YARDVILLE	14.8	1249 PM	12/27	
HAMILTON SQUARE	13.5	534 PM	12/27	
HIGHTSTOWN	13.0	1018 AM	12/27	CO-OP
EWING	10.1	128 PM	12/27	
WASHINGTON CROSSING	9.0	800 AM	12/27	CO-OP
...MIDDLESEX COUNTY...				
EDISON	25.0	935 AM	12/27	
NORTH EDISON	23.3	916 AM	12/27	
CHEESEQUAKE	23.2	837 AM	12/27	
METUCHEN	23.1	1123 AM	12/27	
SAYREVILLE	21.0	1236 AM	12/27	
NEW BRUNSWICK	19.5	1032 AM	12/27	CO-OP
HOPELAWN	18.5	839 AM	12/27	
WOODBIDGE	16.0	923 AM	12/27	
...MONMOUTH COUNTY...				
COLTS NECK	25.0	1103 AM	12/27	
NEPTUNE CITY	24.0	148 PM	12/27	
MIDDLETOWN	24.0	1059 AM	12/27	DRIFTS TO THREE FEET
WEST LONG BRANCH	23.0	1105 AM	12/27	
CREAM RIDGE	22.7	922 AM	12/27	
MORGANVILLE	22.0	122 PM	12/27	
MIDDLETOWN TWP	21.0	1215 AM	12/27	
HOLMDEL	20.0	917 AM	12/27	
MANASQUAN	16.1	1051 AM	12/27	CO-OP
MILLSTONE TWP	15.9	149 PM	12/27	

...MORRIS COUNTY...

LINCOLN PARK	29.0	800 AM	12/27	DRIFTS OVER THREE FEET.
BUTLER	22.0	935 AM	12/27	DRIFTS TO FOUR FEET
GREEN POND	19.5	1133 AM	12/27	
BOONTON	16.0	800 AM	12/27	CO-OP
MILTON	13.0	1102 AM	12/27	
MARCELLA	11.0	1102 AM	12/27	

...OCEAN COUNTY...

BRICKTOWN	30.0	150 PM	12/27	
TOMS RIVER	28.0	941 AM	12/27	
BAYVILLE	26.0	920 AM	12/27	
POINT PLEASANT BEACH	24.8	124 PM	12/27	
SURF CITY	22.0	343 PM	12/27	DRIFTS OVER THREE FEET.
MANAHAWKIN	21.0	916 AM	12/27	
FORKED RIVER	21.0	919 AM	12/27	
JACKSON TWP	20.1	921 AM	12/27	
HERBERTSVILLE	20.0	924 AM	12/27	
MANCHESTER TWP	19.2	919 AM	12/27	
LAKEWOOD	18.0	917 AM	12/27	
WHITING	17.0	919 AM	12/27	
BAMBER LAKE	17.0	917 AM	12/27	
OCEAN TWP	16.0	924 AM	12/27	

...SOMERSET COUNTY...

SOMERSET	22.5	100 AM	12/27	
HILLSBOROUGH	16.5	1123 AM	12/27	
MILLTOWN	15.5	920 AM	12/27	
1 N BRIDGEWATER TWP	14.0	135 PM	12/27	
MILLSTONE	13.2	1251 AM	12/27	
BELLE MEAD	12.0	122 PM	12/27	
SOMERVILLE	10.8	1138 AM	12/27	
BRANCBURG PARK	8.6	843 AM	12/27	
POTTERSVILLE	4.5	1034 AM	12/27	CO-OP

...SUSSEX COUNTY...

HOPATCONG	7.2	1206 AM	12/27	
NEWTON	7.0	837 AM	12/27	
SUSSEX	6.0	1036 AM	12/27	CO-OP
LAFAYETTE	5.0	936 AM	12/27	
HAMPTON TWP	4.9	144 PM	12/27	
WANTAGE	4.5	413 AM	12/27	

...WARREN COUNTY...

HACKETTSTOWN	7.0	935 AM	12/27	
PHILLIPSBURG	3.5	1057 AM	12/27	

PENNSYLVANIA

...BERKS COUNTY...				
HUFFS CHURCH	3.4	1139	AM	12/27
BECHTELSVILLE	3.0	859	AM	12/27 CO-OP
HAMBURG	0.2	1011	AM	12/27 CO-OP
...BUCKS COUNTY...				
BENSALEM	13.0	1104	AM	12/27
MORRISVILLE	8.5	934	AM	12/27
PERKASIE	8.0	1052	AM	12/27 CO-OP
FURLONG	7.7	1106	AM	12/27
QUAKERTOWN	7.0	845	AM	12/27
WEST ROCKHILL TWP	7.0	947	AM	12/27
DOYLESTOWN	5.3	1001	AM	12/27 CO-OP
SPRINGTOWN	4.6	1035	AM	12/27 CO-OP
RIEGELSVILLE	3.5	800	AM	12/27 CO-OP
...CARBON COUNTY...				
BELTZVILLE STATE PAR	2.0	957	AM	12/27 CO-OP
LEHIGHTON	1.0	1028	AM	12/27 CO-OP
...CHESTER COUNTY...				
CHESTERBROOK	10.0	1101	AM	12/27
EAST NANTMEAL	7.0	839	AM	12/27
PHOENIXVILLE	6.0	952	AM	12/27
WEST CHESTER	5.9	1047	AM	12/27 CO-OP
PENNSBURY TWP	5.0	952	AM	12/27
NEW GARDEN	5.0	953	AM	12/27
WEST GROVE	3.0	951	AM	12/27
HONEY BROOK	3.0	800	AM	12/27 CO-OP
BELVIDERE	2.7	958	AM	12/27 CO-OP
LONDON BRITAN TWP	2.5	951	AM	12/27
NEW LONDON	2.5	952	AM	12/27
OXFORD	2.0	852	AM	12/27
...DELAWARE COUNTY...				
FOLCROFT	14.0	1235	PM	12/27
CLIFTON HEIGHTS	12.4	1052	AM	12/27
DREXEL HILL	11.3	220	AM	12/27
MEDIA	8.6	931	AM	12/27
RADNOR	6.6	951	AM	12/27
...LEHIGH COUNTY...				
ALLENTOWN	2.8	819	AM	12/27
...MONROE COUNTY...				
BLAKESLEE	6.3	841	AM	12/27
POCONO SUMMIT	5.5	1118	AM	12/27



DELAWARE WATER GAP 5.0 1221 PM 12/27  
 STROUD TWP 2.0 936 AM 12/27

...MONTGOMERY COUNTY...

WYNNEWOOD 11.0 841 AM 12/27  
 TRAPPE 9.6 1058 AM 12/27  
 HATFIELD 9.2 142 PM 12/27  
 SKIPPACK 8.0 947 AM 12/27  
 AMBLER 8.0 908 AM 12/27  
 ROYERSFORD 7.0 851 AM 12/27  
 WASHINGTONS CROSSING 6.7 1250 AM 12/27  
 PALM 4.0 1032 AM 12/27 CO-OP  
 GREEN LANE 4.0 1005 AM 12/27 CO-OP

...NORTHAMPTON COUNTY...

EASTON 3.0 1002 AM 12/27 CO-OP

...PHILADELPHIA COUNTY...

PHILADELPHIA 12.4 802 AM 12/27  
 ROXBOROUGH 12.0 1106 AM 12/27  
 SOMERTON 9.0 100 AM 12/27

\*\*\*\*\*24 HOUR SNOWFALL\*\*\*\*\*

LOCATION	24 HOUR SNOWFALL /INCHES/	TIME/DATE OF MEASUREMENT	COMMENTS
----------	---------------------------------	--------------------------------	----------

DELAWARE

...KENT COUNTY...

4 NE FELTON	8.2	800 AM 12/27	COCORAHS
2 NW MAGNOLIA	5.8	800 AM 12/27	COCORAHS
6 WNW DOVER	4.6	700 AM 12/27	COCORAHS

...NEW CASTLE COUNTY...

5 N WILMINGTON	5.5	800 AM 12/27	COCORAHS
2 SE GLASGOW	3.5	700 AM 12/27	COCORAHS
2 WNW NEWPORT	2.5	700 AM 12/27	COCORAHS
4 SSW NEWARK	2.2	700 AM 12/27	COCORAHS

...SUSSEX COUNTY...

4 E DELMAR	8.5	700 AM 12/27	COCORAHS
------------	-----	--------------	----------

MARYLAND

...CAROLINE COUNTY...

1	ENE GREENSBORO	6.4	700	AM	12/27	COCORAHS
6	WSW DENTON	6.3	700	AM	12/27	COCORAHS
...TALBOT COUNTY...						
1	SW EASTON	5.0	827	AM	12/27	COCORAHS
2	SE EASTON	3.1	700	AM	12/27	COCORAHS
1	SE ST. MICHAELS	3.1	800	AM	12/27	COCORAHS
NEW JERSEY						
...ATLANTIC COUNTY...						
2	SE HAMILTON TWP	18.3	800	AM	12/27	COCORAHS
3	SE FOLSOM	16.3	700	AM	12/27	COCORAHS
1	NW EGG HARBOR TWP	13.0	900	AM	12/27	COCORAHS
3	NNE BUENA VISTA TW	12.0	700	AM	12/27	COCORAHS
3	WSW HAMMONTON	11.2	800	AM	12/27	COCORAHS
4	WNW ESTELL MANOR	10.8	800	AM	12/27	COCORAHS
...BURLINGTON COUNTY...						
3	NNW TABERNACLE TWP	15.5	900	AM	12/27	COCORAHS
3	ENE MOUNT LAUREL T	10.0	700	AM	12/27	COCORAHS
1	SE MOORESTOWN TWP	9.5	748	AM	12/27	COCORAHS
2	SSE MEDFORD TWP	9.2	800	AM	12/27	COCORAHS
2	E BURLINGTON	8.8	800	AM	12/27	COCORAHS
...CAMDEN COUNTY...						
1	ESE MERCHANTVILLE	10.0	700	AM	12/27	COCORAHS
1	WNW BERLIN TWP	9.8	1000	AM	12/27	COCORAHS
4	W WINSLOW TWP	5.5	700	AM	12/27	COCORAHS
...CAPE MAY COUNTY...						
2	NE LOWER TWP	22.0	700	AM	12/27	COCORAHS
2	NNW STONE HARBOR	11.0	700	AM	12/27	COCORAHS
	WSW WILDWOOD CREST	10.5	800	AM	12/27	COCORAHS
...CUMBERLAND COUNTY...						
2	SW UPPER DEERFIELD	8.1	730	AM	12/27	COCORAHS
...GLOUCESTER COUNTY...						
3	W FRANKLIN TWP	13.5	700	AM	12/27	COCORAHS
2	E MANTUA TWP	12.8	700	AM	12/27	COCORAHS
...HUNTERDON COUNTY...						
3	NNE HOLLAND TWP	7.3	630	AM	12/27	COCORAHS
4	NW STOCKTON	6.1	700	AM	12/27	COCORAHS
1	S BETHLEHEM TWP	4.5	830	AM	12/27	COCORAHS
4	N CLINTON TWP	4.5	800	AM	12/27	COCORAHS
	E FLEMINGTON	4.5	630	AM	12/27	COCORAHS

1	WNW HIGH BRIDGE	4.2	700 AM	12/27	COCORAHNS
2	E FLEMINGTON	4.1	600 AM	12/27	COCORAHNS
3	SW LEBANON	4.0	700 AM	12/27	COCORAHNS
3	N LEBANON	4.0	700 AM	12/27	COCORAHNS
2	WSW READINGTON TWP	4.0	700 AM	12/27	COCORAHNS
...MERCER COUNTY...					
2	WSW WASHINGTON TWP	14.0	900 AM	12/27	COCORAHNS
2	NE HAMILTON TWP	14.0	700 AM	12/27	COCORAHNS
2	SSE PRINCETON TWP	13.5	800 AM	12/27	COCORAHNS
1	NNW LAWRENCE TWP	11.7	530 AM	12/27	COCORAHNS
1	ENE PENNINGTON	4.9	900 AM	12/27	COCORAHNS
1	ESE EWING TWP	1.0	359 AM	12/27	COCORAHNS
...MIDDLESEX COUNTY...					
2	W NORTH BRUNSWICK	22.9	700 AM	12/27	COCORAHNS
...MONMOUTH COUNTY...					
3	W HOWELL TWP	22.5	700 AM	12/27	COCORAHNS
1	NW RED BANK	22.0	700 AM	12/27	COCORAHNS
3	NNW MIDDLETOWN TWP	22.0	1200 PM	12/27	COCORAHNS
1	WNW FREEHOLD TWP	21.2	730 AM	12/27	COCORAHNS
...MORRIS COUNTY...					
2	SSE BOONTON TWP	18.5	900 AM	12/27	COCORAHNS
2	ENE JEFFERSON TWP	12.8	600 AM	12/27	COCORAHNS
3	NNW HARDING TWP	12.0	700 AM	12/27	COCORAHNS
2	E PARSIPPANY-TROY	12.0	800 AM	12/27	COCORAHNS
1	NE ROCKAWAY TWP	11.0	800 AM	12/27	COCORAHNS
2	NNE DENVILLE TWP	10.3	700 AM	12/27	COCORAHNS
	NNW ROCKAWAY	8.0	800 AM	12/27	COCORAHNS
	NE MINE HILL TWP	7.2	800 AM	12/27	COCORAHNS
2	S ROXBURY TWP	6.8	700 AM	12/27	COCORAHNS
2	WNW MOUNT OLIVE TW	6.2	700 AM	12/27	COCORAHNS
1	W RANDOLPH TWP	6.0	700 AM	12/27	COCORAHNS
...OCEAN COUNTY...					
1	SW POINT PLEASANT	24.3	700 AM	12/27	COCORAHNS
2	NNE BRICK TWP	22.1	1130 AM	12/27	COCORAHNS
3	ENE BERKELEY TWP	22.0	900 AM	12/27	COCORAHNS
5	SE BERKELEY TWP	20.0	800 AM	12/27	COCORAHNS
5	N LITTLE EGG HARBO	17.0	500 AM	12/27	COCORAHNS
	NW PINE BEACH	14.5	800 AM	12/27	COCORAHNS
...SALEM COUNTY...					
1	NW WOODSTOWN	4.8	700 AM	12/27	COCORAHNS
...SOMERSET COUNTY...					

4	ENE FRANKLIN TWP	19.5	700 AM	12/27	COCORAHS
5	ESE HILLSBOROUGH T	16.5	700 AM	12/27	COCORAHS
1	NW BERNARDS TWP	12.0	700 AM	12/27	COCORAHS
	ENE SOMERVILLE	10.5	800 AM	12/27	COCORAHS
2	NNE MONTGOMERY TWP	9.0	800 AM	12/27	COCORAHS
1	NNW BERNARDS TWP	8.4	630 AM	12/27	COCORAHS
3	NE MONTGOMERY TWP	8.0	745 AM	12/27	COCORAHS
2	W BRIDGEWATER TWP	7.1	700 AM	12/27	COCORAHS
1	ENE BERNARDS TWP	7.0	700 AM	12/27	COCORAHS
3	NW BRIDGEWATER TWP	7.0	700 AM	12/27	COCORAHS
1	N HILLSBOROUGH TWP	6.1	900 AM	12/27	COCORAHS

...SUSSEX COUNTY...

3	SE HARDYSTON TWP	9.8	800 AM	12/27	COCORAHS
2	N VERNON TWP	8.0	700 AM	12/27	COCORAHS
2	SW WANTAGE TWP	6.0	700 AM	12/27	COCORAHS
2	W ANDOVER TWP	5.0	700 AM	12/27	COCORAHS

...WARREN COUNTY...

3	SE INDEPENDENCE TW	7.0	700 AM	12/27	COCORAHS
1	ENE WASHINGTON	4.1	600 AM	12/27	COCORAHS
2	WSW LIBERTY TWP	3.1	700 AM	12/27	COCORAHS
2	SE BLAIRSTOWN TWP	3.0	700 AM	12/27	COCORAHS

PENNSYLVANIA

...BERKS COUNTY...

2	E OLEY	3.0	800 AM	12/27	COCORAHS
2	ESE FLEETWOOD	1.8	830 AM	12/27	COCORAHS
1	SSE WEST LAWN	1.0	700 AM	12/27	COCORAHS
4	NNW READING	1.0	800 AM	12/27	COCORAHS

...BUCKS COUNTY...

1	WSW PENNDEL	8.1	700 AM	12/27	COCORAHS
1	NE NEWTOWN	8.0	800 AM	12/27	COCORAHS
4	W DOYLESTOWN	6.1	900 AM	12/27	COCORAHS

...CARBON COUNTY...

7	NW CHAPMAN	4.0	915 AM	12/27	COCORAHS
6	ENE PALMERTON	3.5	800 AM	12/27	COCORAHS
1	W WEATHERLY	2.8	800 AM	12/27	COCORAHS
4	NE PALMERTON	1.7	800 AM	12/27	COCORAHS
3	WSW BOWMANSTOWN	1.3	1037 AM	12/27	COCORAHS

...CHESTER COUNTY...

2	SSE WEST CHESTER	6.0	700 AM	12/27	COCORAHS
---	------------------	-----	--------	-------	----------

...LEHIGH COUNTY...

3 SW SCHNECKSVILLE	1.0	700 AM 12/27	COCORAHS
4 W ALLENTOWN	1.0	800 AM 12/27	COCORAHS
...MONTGOMERY COUNTY...			
2 NW BLUE BELL	9.0	830 AM 12/27	COCORAHS
3 SSW KULPSVILLE	8.0	700 AM 12/27	COCORAHS
1 SE POTTSTOWN	3.0	700 AM 12/27	COCORAHS
...PHILADELPHIA COUNTY...			
5 NE PHILADELPHIA	11.0	700 AM 12/27	COCORAHS
1 SE ROCKLEDGE	11.0	900 AM 12/27	COCORAHS
3 SSW WYNDMOOR	9.0	700 AM 12/27	COCORAHS

\*\*\*\*\*PEAK WIND GUST\*\*\*\*\*

LOCATION	MAX WIND GUST MPH	TIME/DATE OF MEASUREMENT	COMMENTS
----------	-------------------------	--------------------------------	----------

DELAWARE

...KENT COUNTY...			
SANDTOWN	49	300 PM 12/27	
...NEW CASTLE COUNTY...			
WILMINGTON ASOS	62	121 PM 12/27	
BEAR	53	1115 AM 12/27	
...SUSSEX COUNTY...			
LEWES	49	100 AM 12/27	

MARYLAND

...CECIL COUNTY...			
CHESAPEAKE CITY	49	1100 AM 12/27	
...KENT COUNTY...			
TOLCHESTER BEACH NOS	49	1000 AM 12/27	

NEW JERSEY

...ANZ338...			
SANDY HOOK NOS BUOY	56	1200 PM 12/27	
...ATLANTIC COUNTY...			
ATLANTIC CITY ASOS	51	334 PM 12/27	

...BURLINGTON COUNTY...			
CHATSWORTH	44	100	PM 12/27
MOUNT HOLLY ASOS	41	908	AM 12/27
...CAPE MAY COUNTY...			
WEST CAPE MAY	59	904	AM 12/27
CAPE MAY	50	1215	AM 12/27
...MERCER COUNTY...			
TRENTON ASOS	54	1125	AM 12/27
...MONMOUTH COUNTY...			
SANDY HOOK	52	201	AM 12/27
KEANSBURG	50	300	PM 12/27
...OCEAN COUNTY...			
LONG BEACH	61	330	PM 12/27
POINT PLEASANT	48	100	PM 12/27
SEASIDE HEIGHTS	44	235	AM 12/27

PENNSYLVANIA

...BERKS COUNTY...			
READING ASOS	56	535	PM 12/27
...BUCKS COUNTY...			
NEWBOLD NOS	44	900	AM 12/27
...CHESTER COUNTY...			
LONDON GROVE TWP	60	700	AM 12/27
...LEHIGH COUNTY...			
ALLENTOWN ASOS	54	522	AM 12/27
...MONROE COUNTY...			
MOUNT POCONO ASOS	62	159	PM 12/27
...PHILADELPHIA COUNTY...			
PHILADELPHIA ASOS	52	1010	AM 12/27

\$\$