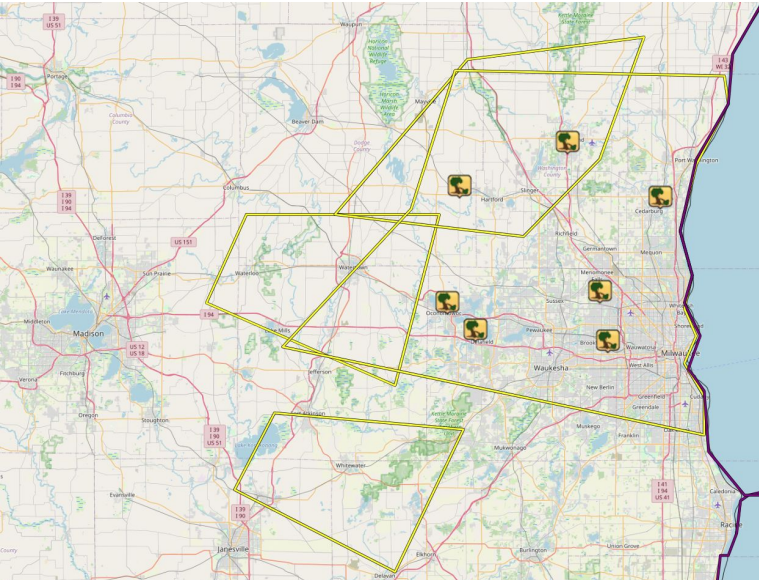




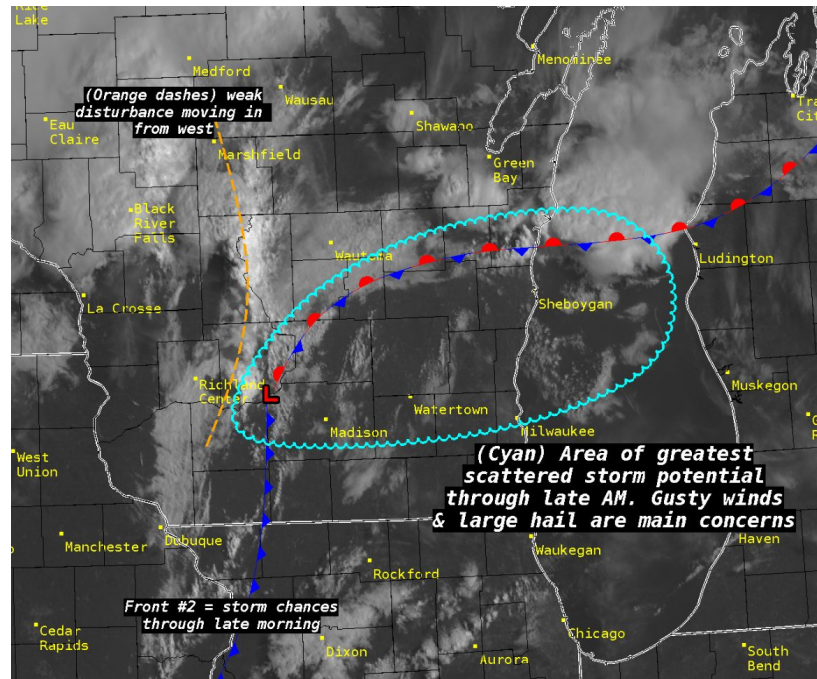
# Southeast WI Damaging Winds

## Occurred on August 27, 2024



A line of strong to severe storms moved across southeast Wisconsin during the late AM hours on August 27, 2024.

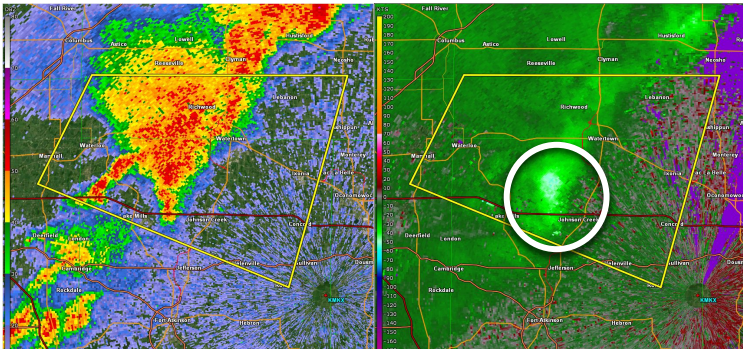
Storms produced frequent cloud to ground lightning, torrential downpours, and multiple reports of tree damage prior to moving out over Lake Michigan



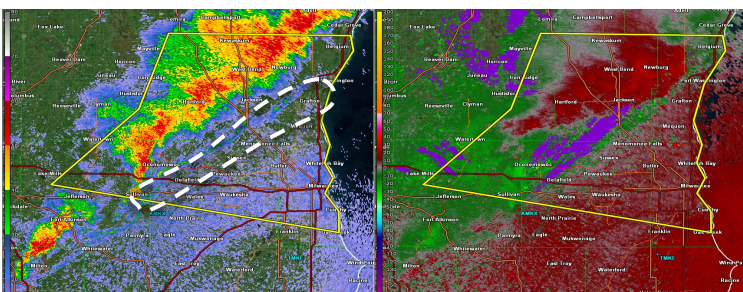
Warnings (yellow polygons) & wind reports received during the August 27 event. Image taken from IEM Cow. Click [here](#) to view interactive plot.

A frontal boundary and weak disturbance paired with hot and humid conditions set up an environment for thunderstorm development moving into the late AM hours on 8/27. Given dry air aloft, supported damaging wind threat.

Environment Graphs posted to social media by IWS Milwaukee/Sullivan on the morning of 8/27



Radar-estimated winds in excess of 60 MPH



Gust front surging across Washington & Ozaukee Cos



Numerous reports of tree damage extending from Washington & Ozaukee Counties southwest toward Oconomowoc, where this photo was taken.

Image courtesy of @jandjagan on X