

# Climate Review for the month of November 2013

Presented by:  
National Weather Service  
Newport/Morehead City

# Summary

During the month of November, high pressure dominated the area with frequent cold front passages causing a few cold snaps. Overall, the average max temperature ranged in the low to mid 60s across the Eastern NC. Average lows were in the low 40s to low 50s, except for Pitt and Martin county where average min temperature were in the upper 30s. The growing season ended early including the Outer Banks compared to climatology. The last Freeze Warning issued was on November 24.

On November 26, a low pressure system moved across NC, west of Interstate-95 with Eastern NC located in the warm sector of the system. The system presented excellent wind shear along with weak instability leading to a Tornado Watch. A tornado formed and crossed Atlantic Beach producing EF2 damage and then crossed the Bogue Sound into Morehead City where it caused EF1 damage. For more information, please read our [Event Review](#).

Overall, the area received below normal precipitation for the month. Precipitation varied across the area with rain ranging 2.50 to 5 inches along with a trace snow reported in New Bern. Most of the rain fell along the coastal counties. Due to the lack of rain that occurred across Eastern NC the region was placed in D0 designation (Abnormally Dry) compared to the previous months.

*DISCLAIMER : The climate data provided are preliminary and have not undergone final quality control by NCDC. Therefore...this data is subject to revision.*

# Average Temperatures within our CWA

	Avg_Max	Avg_Max Normal	Avg_Min	Avg_Min Normal
Beaufort	63.9	na	45.5	na
Cape Hatteras	63.2	64.8	50.1	50.3
New Bern	65.1	66.0	42.4	43.7
Greenville	62.4	64.6	38.6	40.7
Kinston AG	65.8	68.7	41.6	42.9
Williamston	62.1	64.3	38.4	41.2
Plymouth	62.3	66.0	41.1	42.6
Bayboro	64.9	67.5	42.3	43.2

Average temperatures were up to 3 degrees below normal.

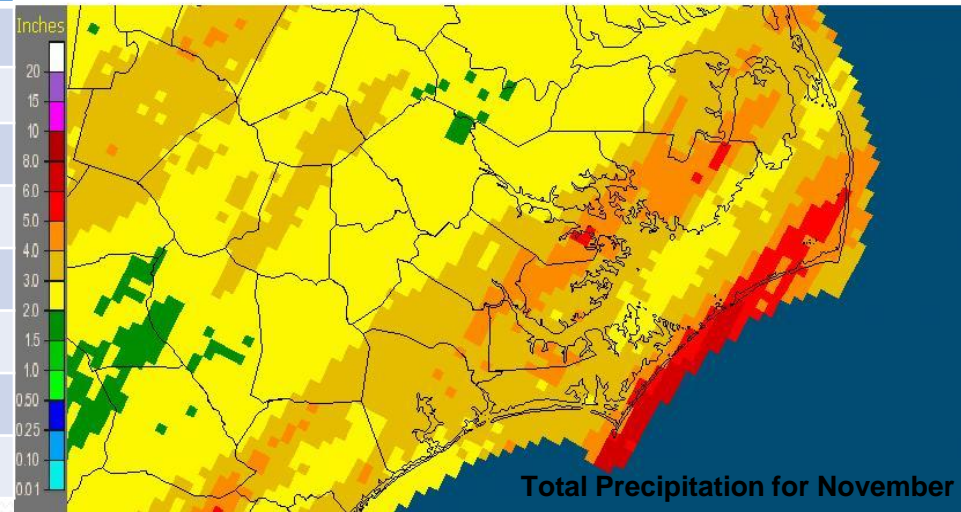
# Max and Min Temperature within our CWA

	MAX	MIN
Beaufort	77	26
Cape Hatteras	77	33
New Bern	81	24
Greenville	81	21
Kinston AG	81	21
Williamston	80	23
Plymouth	78	23
Bayboro	79	28

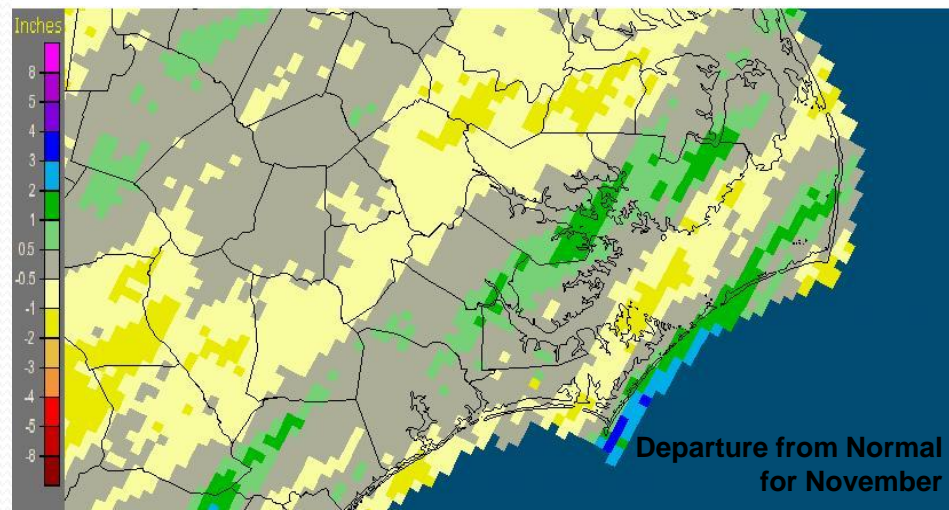
# November's Rain versus Normal

	Precipitation (inches)	Normal	Differences
Beaufort	2.92	na	na
Cape Hatteras	3.93	4.95	-1.02
New Bern	4.45	3.4	1.05
Greenville	2.93	3.12	-0.19
Kinston AG	2.86	3.08	-0.22
Williamston	2.63	3.08	-0.45
Plymouth	3.36	3.53	-0.17
Bayboro	4.78	3.78	1

Newport/Morehead City, NC (MHX): November, 2013 Monthly Observed Precipitation  
Valid at 12/1/2013 1200 UTC- Created 12/3/13 21:37 UTC

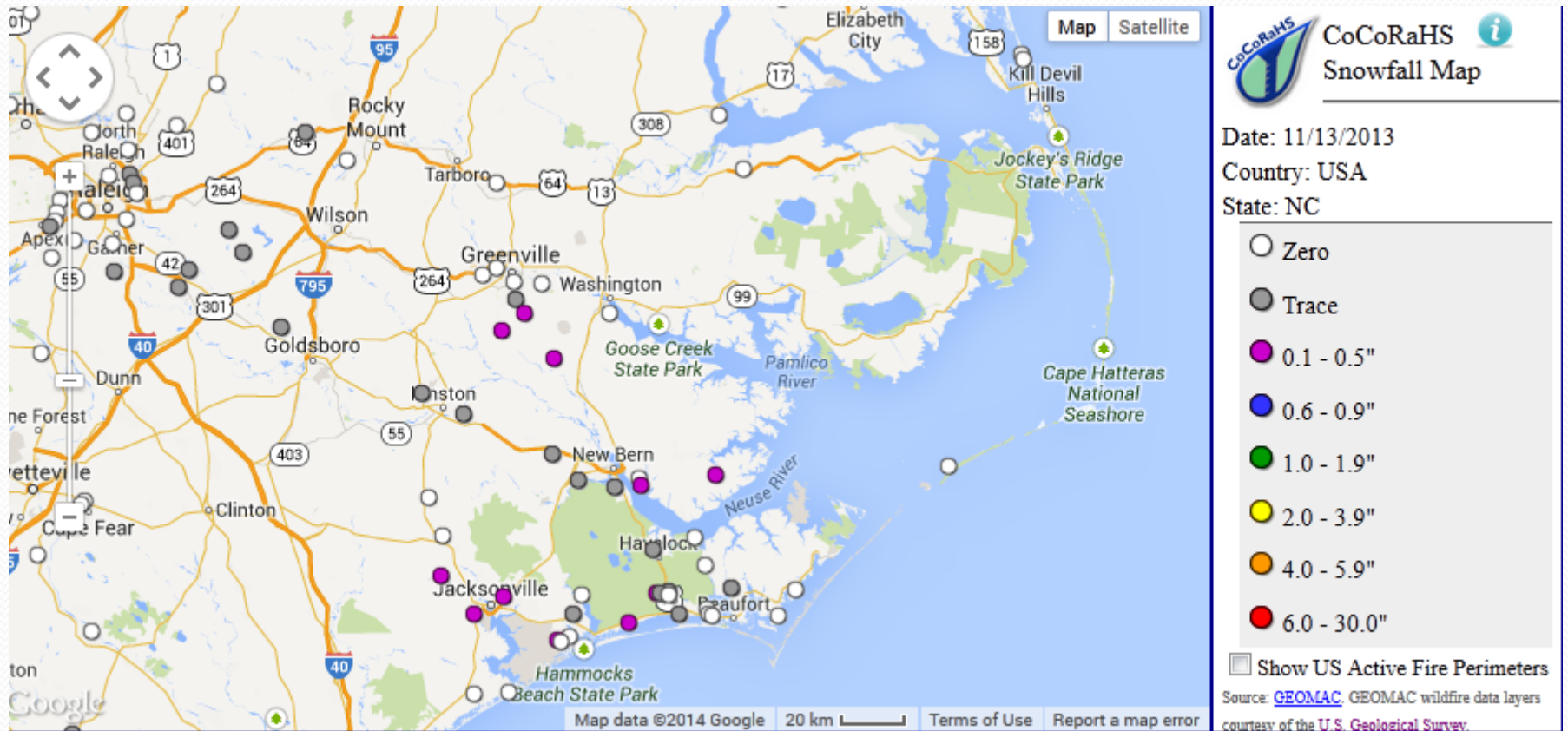


Newport/Morehead City, NC (MHX): November, 2013 Monthly Departure from Normal Precipitation  
Valid at 12/1/2013 1200 UTC- Created 12/3/13 21:39 UTC



Rainfall amounts varied throughout the eastern NC with the highest amount of rainfall along the coastal areas. Rainfall range from 2 to 5 inches with trace of snow reported in New Bern Airport.

# Snowfall

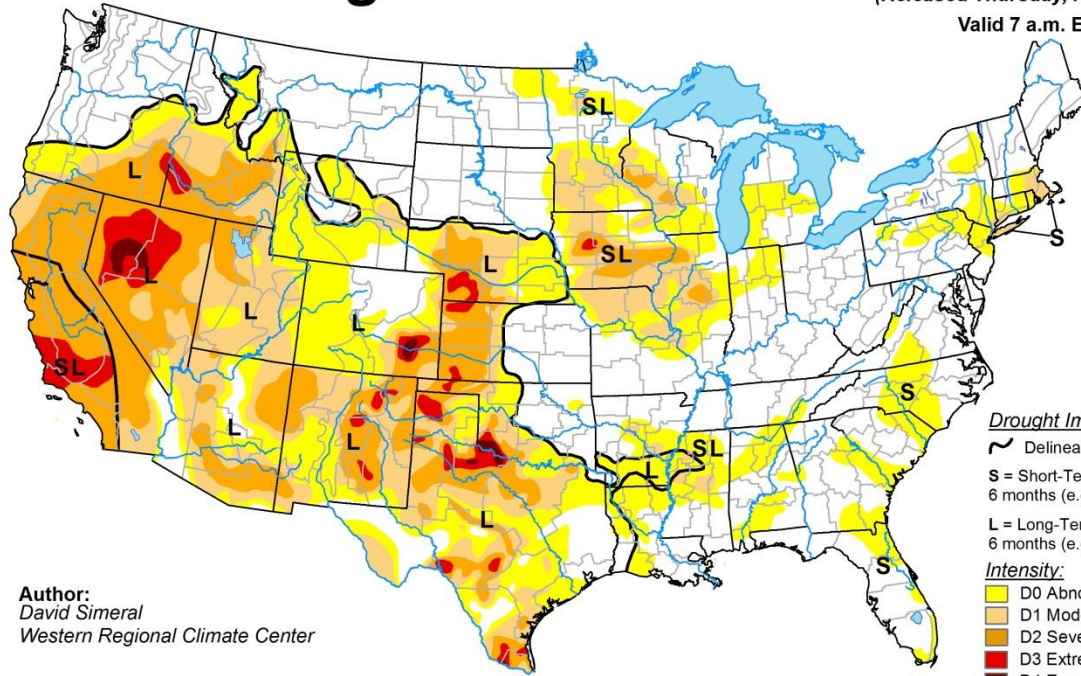


Most locations received at least a trace of snow.

# U.S. Drought Monitor

November 5, 2013  
(Released Thursday, Nov. 7, 2013)

Valid 7 a.m. EST



Author:  
David Simeral  
Western Regional Climate Center

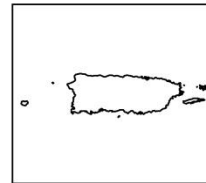
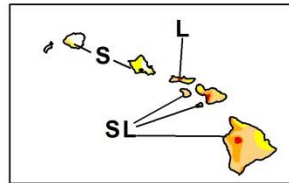
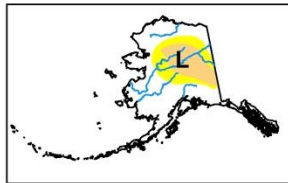
**Drought Impact Types:**

- ~ Delineates dominant impacts
- S = Short-Term, typically less than 6 months (e.g. agriculture, grasslands)
- L = Long-Term, typically greater than 6 months (e.g. hydrology, ecology)

**Intensity:**

- D0 Abnormally Dry
- D1 Moderate Drought
- D2 Severe Drought
- D3 Extreme Drought
- D4 Exceptional Drought

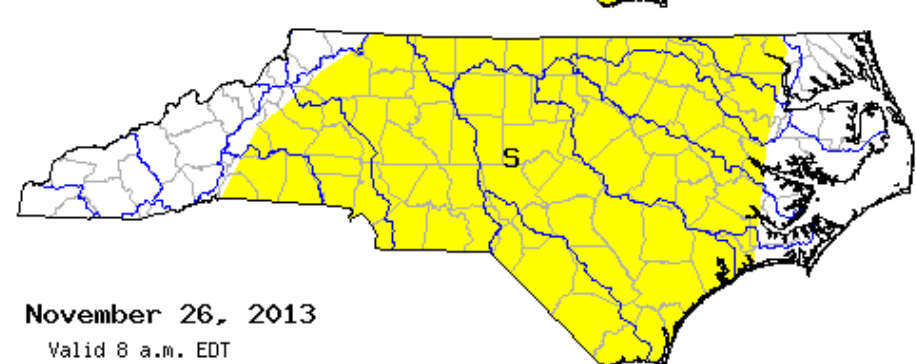
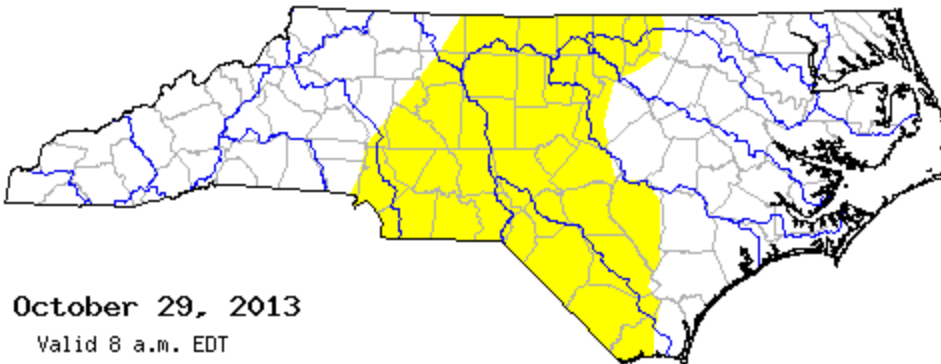
The Drought Monitor focuses on broad-scale conditions. Local conditions may vary. See accompanying text summary for forecast statements.



<http://droughtmonitor.unl.edu/>

Before

Now



October 29, 2013  
Valid 8 a.m. EDT

November 26, 2013  
Valid 8 a.m. EDT