

# Climate Review for the month of December 2012

Presented by:  
National Weather Service  
Newport/Morehead City

# Summary

December was a mild and wet month. Weather patterns in the beginning of December were mostly zonal until the middle of the month when conditions shifted when the AO and NAO went negative. Upper troughs and their associated cold fronts and low pressure systems brought above normal precipitation across Eastern North Carolina. December rainfall normally ranges between 3 to 4 inches, but this month 3 to 7 inches fell across Eastern NC with the greatest amount across the Outer Banks.

This month temperatures were above normal with an average max temperature in the 60s (2 to 6 degrees above normal) and an average min temperature 40s (4 to 6 degrees above normal).

# Average Temperatures within our CWA

	Avg_Max	Avg_Max Normal	Avg_Min	Avg_Min Normal
Beaufort	60.9	na	45.6	na
Cape Hatteras	60.3	57.3	47.0	42.6
New Bern	62.4	57.7	42.1	36.3
Greenville	61.2	55.4	40.2	33.8
Kinston AG	62.5	59.3	42.4	36.1
Williamston	60.1	55.5	38.7	34.4
Plymouth	59.8	57.5	39.9	36.0
Bayboro	62.1	58.9	41.5	36.1

Average temperatures were 4 to 6 degrees above normal.

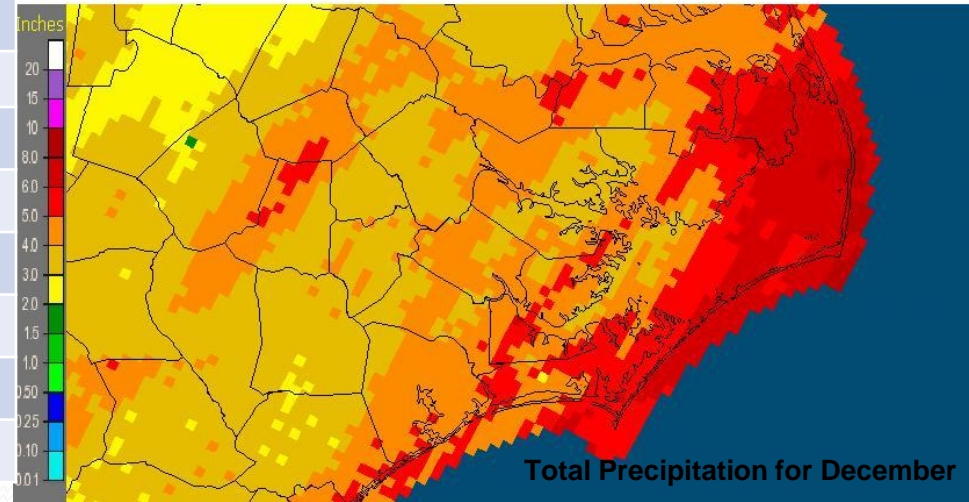
# Max and Min Temperature within our CWA

	MAX	MIN
Beaufort	71	30
Cape Hatteras	71	35
New Bern	76	25
Greenville	76	25
Kinston AG	75	26
Williamston	75	26
Plymouth	74	23
Bayboro	75	29

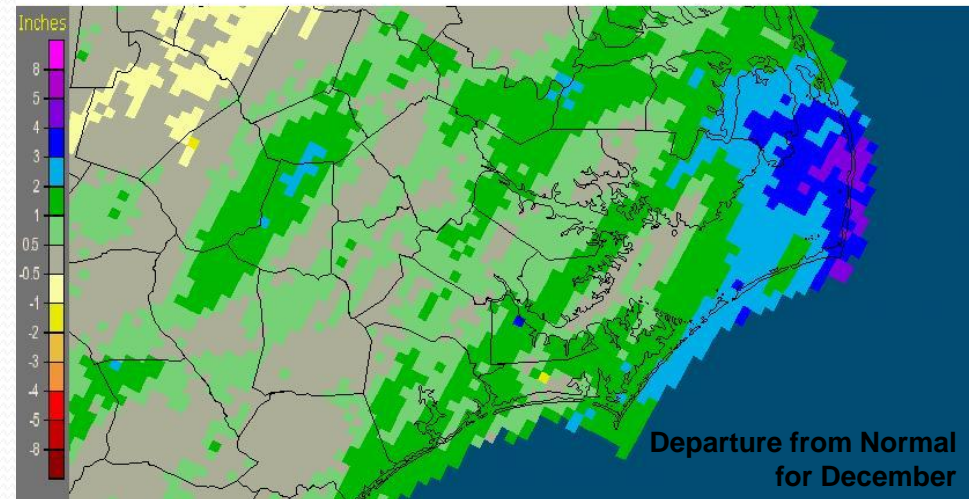
# December's Rain versus Normal

	Precipitation (inches)	Normal	Differences
Beaufort	5.11	na	na
Cape Hatteras	6.51	4.27	2.24
New Bern	4.94	3.4	1.54
Greenville	3.58	3.25	0.33
Kinston AG	3.26	3.08	0.18
Williamston	4.6	3.24	1.36
Plymouth	5.15	3.29	1.86
Bayboro	6.16	3.75	2.41

Newport/Morehead City, NC (MHX): December, 2012 Monthly Observed Precipitation  
Valid at 1/1/2013 1200 UTC- Created 1/3/13 21:37 UTC



Newport/Morehead City, NC (MHX): December, 2012 Monthly Departure from Normal Precipitation  
Valid at 1/1/2013 1200 UTC- Created 1/3/13 21:40 UTC

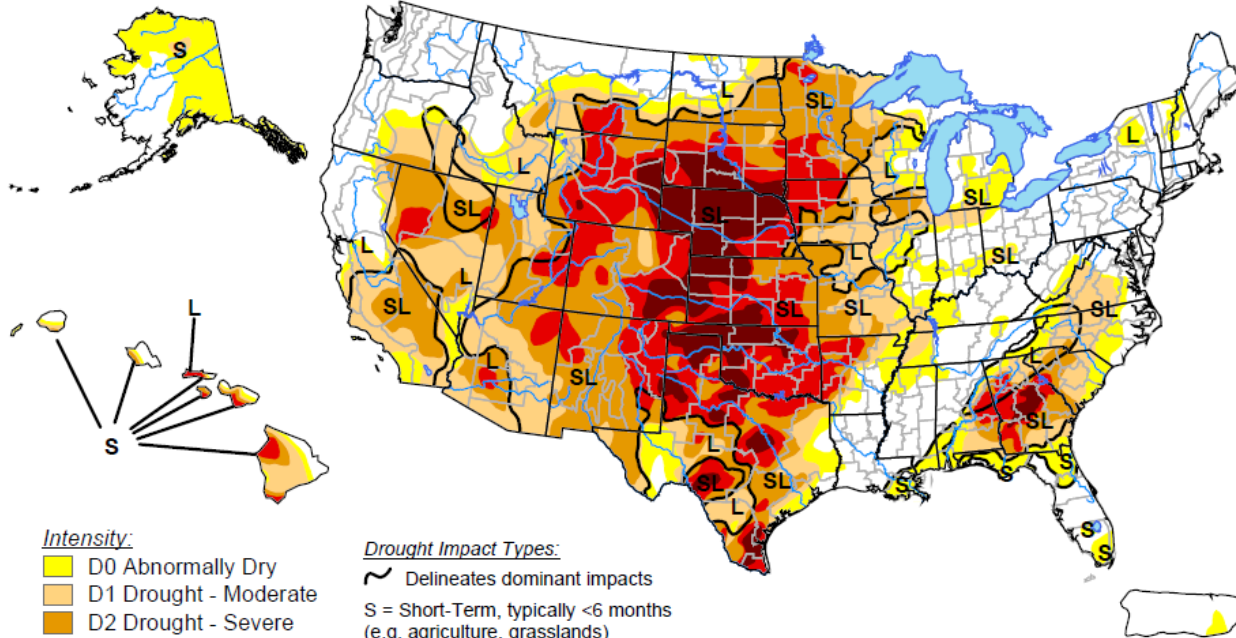


Above normal precipitation fell across Eastern North Carolina. Counties adjacent to the coastal waters had the greatest amount.



# U.S. Drought Monitor

January 8, 2013  
Valid 7 a.m. EST



Intensity:

- D0 Abnormally Dry
- D1 Drought - Moderate
- D2 Drought - Severe
- D3 Drought - Extreme
- D4 Drought - Exceptional

Drought Impact Types:

- Delineates dominant impacts
- S = Short-Term, typically <6 months (e.g. agriculture, grasslands)
- L = Long-Term, typically >6 months (e.g. hydrology, ecology)

The Drought Monitor focuses on broad-scale conditions. Local conditions may vary. See accompanying text summary for forecast statements.

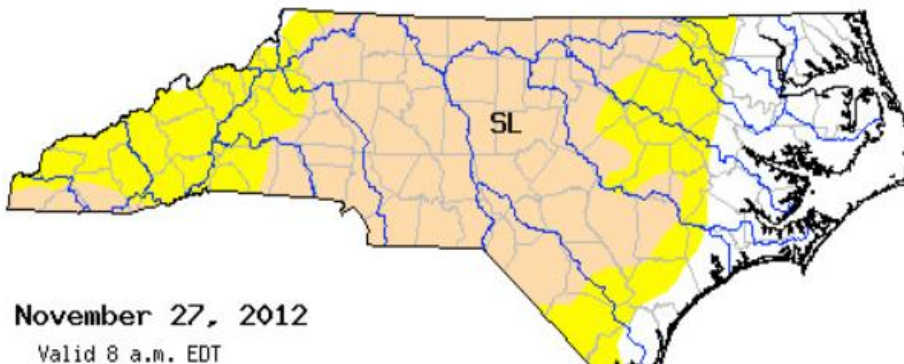
<http://droughtmonitor.unl.edu/>



Released Thursday, January 10, 2013

Author: David Simeral, Western Regional Climate Center

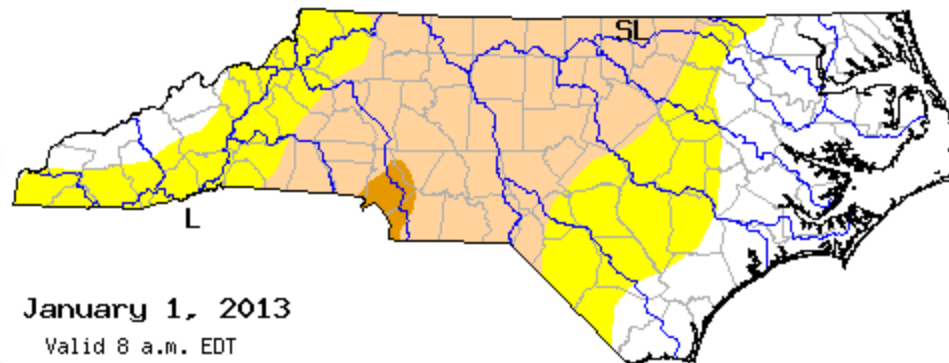
Before



November 27, 2012

Valid 8 a.m. EDT

Now



January 1, 2013

Valid 8 a.m. EDT