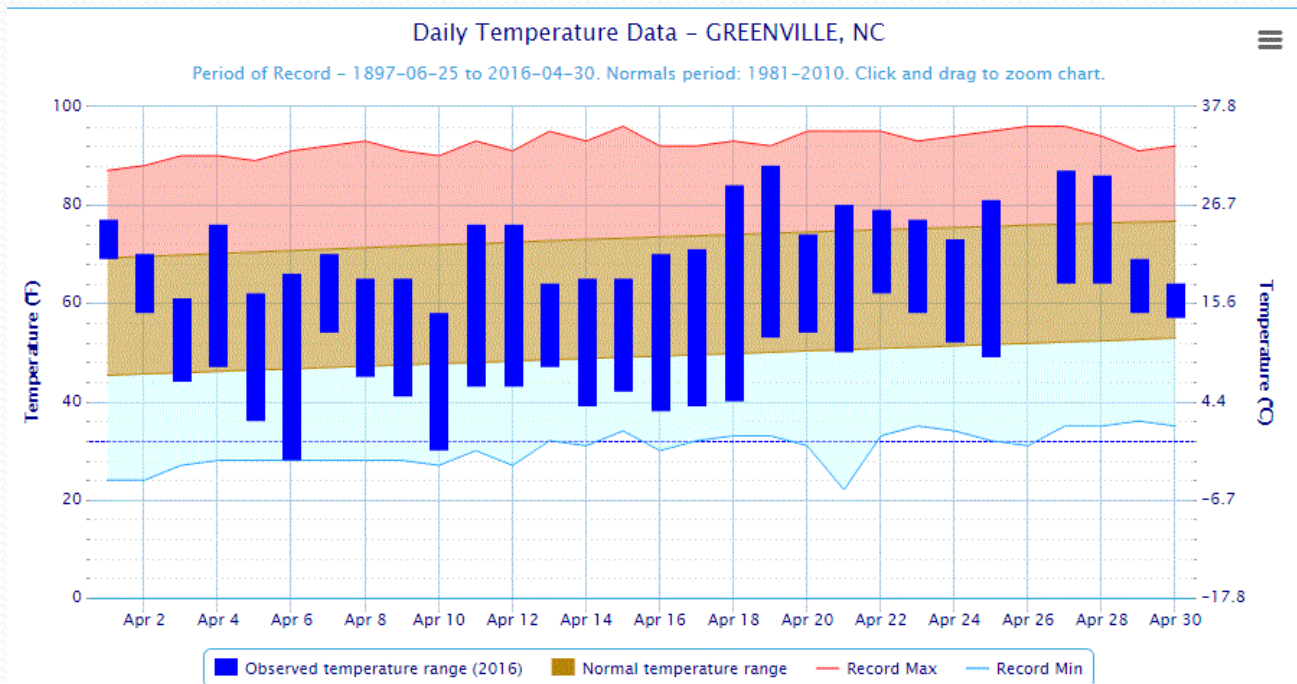


Climate Review for the month April 2016

Presented by:
National Weather Service
Newport/Morehead City

Summary

Following a very warm March, April was near or below normal in temperatures over much of eastern North Carolina. Precipitation was below normal over all but the far northwestern and northern portions of our County Warning Area, where Greenville, Williamston and Plymouth reported above normal rainfall totals. For the second consecutive month, severe weather was very limited in the region.



DISCLAIMER : The climate data provided are preliminary and have not undergone final quality control by NCDC. Therefore...this data is subject to revision.

Average Temperatures within our CWA in April 2016

	Avg_Max	Avg_Max Normal	Avg_Min	Avg_Min Normal
Beaufort	69.2	69.0	51.9	53.1
Cape Hatteras	67.0	66.3	53.1	52.6
New Bern	72.5	73.5	48.9	50.1
Greenville	72.8	73.2	47.7	49.1
Williamston	70.9	71.4	47.8	47.3
Plymouth	72.9	73.7	48.1	48.5
Bayboro	70.8	72.6	47.3	48.4

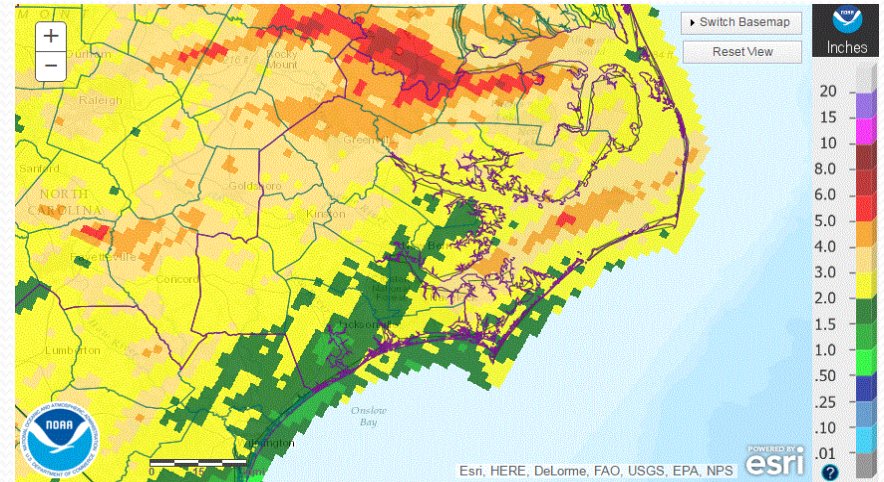
Temperatures were near or just below normal values in April 2016 across eastern NC.

Max and Min Temperature within our CWA in April 2016.

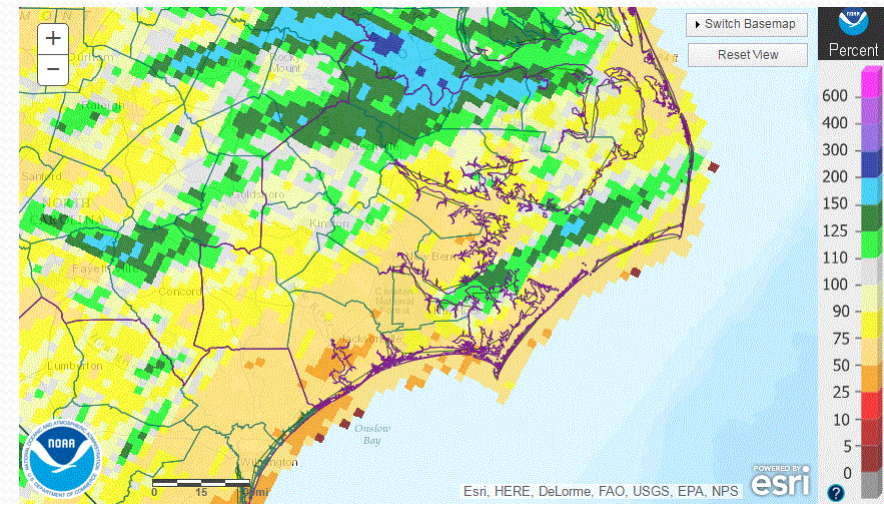
	MAX	MIN
Beaufort	87	35
Cape Hatteras	78	40
New Bern	88	34
Greenville	88	28
Williamston	86	31
Plymouth	87	28
Bayboro	86	33

April 2016 Rain Versus Climate Normal

	Precipitation (inches)	Normal	Difference
Beaufort	1.62	3.55	-1.93
Cape Hatteras	2.31	3.64	-1.33
New Bern	1.68	3.17	-1.49
Greenville	3.54	3.17	0.37
Williamston	5.48	3.17	2.31
Plymouth	5.42	3.33	2.09
Bayboro	2.38	3.61	-1.23



Observed Precipitation

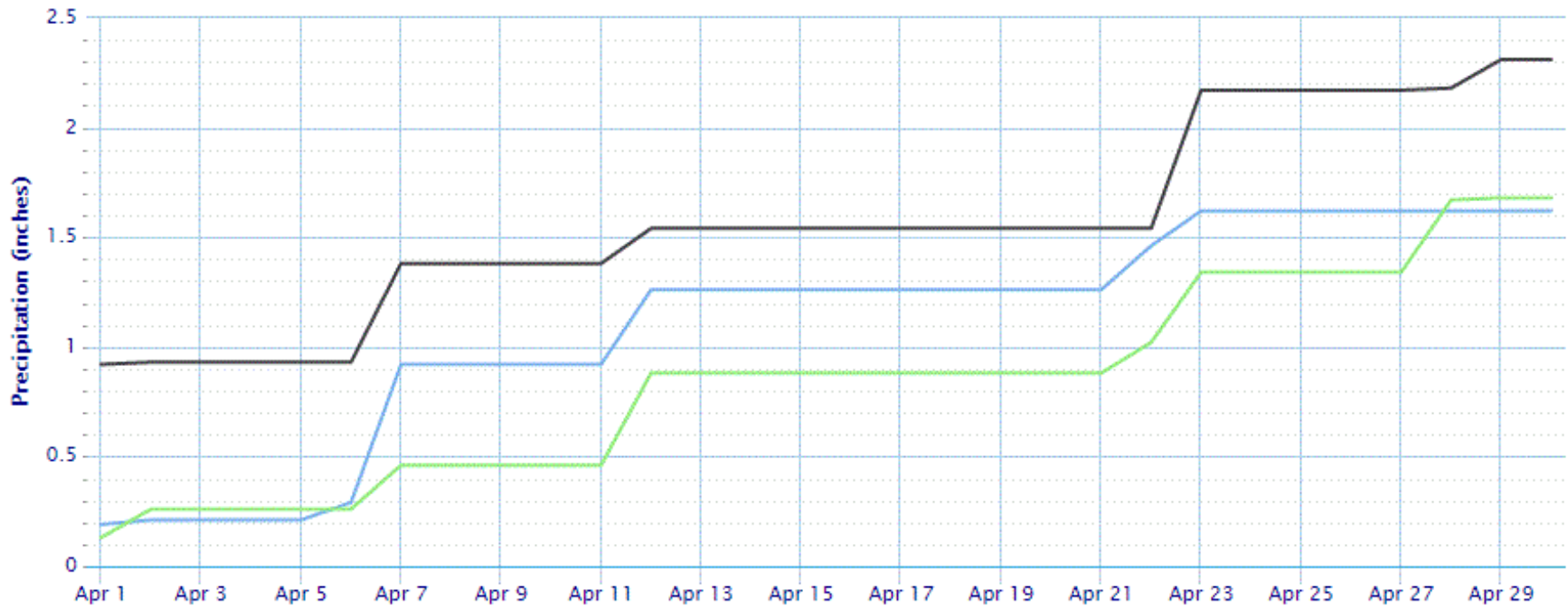


Percentage of Normal

April 2016 Total Precipitation

Accumulated Precipitation

Green/black diamonds represent subsequent/missing values



(Click to hide/show lines)

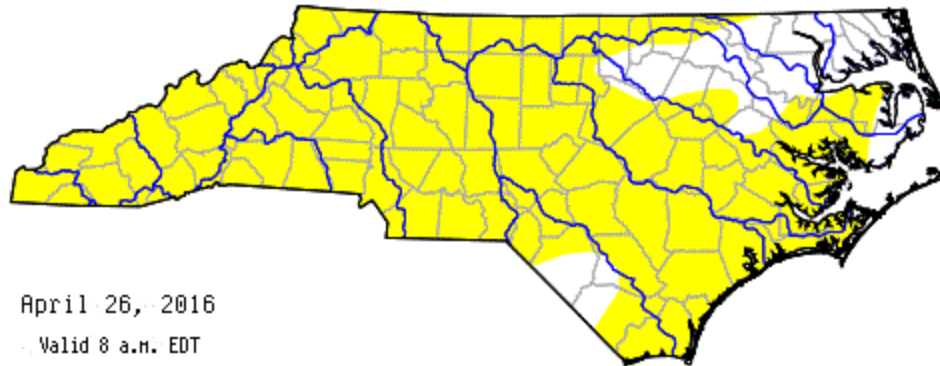
— BEAUFORT MICHAEL J SMITH FLD, NC:Precip

— CAPE HATTERAS AP, NC:Precip

— NEW BERN CRAVEN CO AP, NC:Precip

Latest Drought Monitor for North Carolina

US Drought Monitor of
NORTH CAROLINA



April 26, 2016

Valid 8 a.m. EDT

Drought Classifications

- D0 - Abnormally Dry
- D1 - Moderate Drought
- D2 - Severe Drought
- D3 - Extreme Drought
- D4 - Exceptional Drought



County Boundaries



Major River Basins ([View Map](#))

S = Short-Term, typically <6 months (e.g. agriculture, grasslands)

L = Long-Term, typically >6 months (e.g. hydrology, ecology)

[Hi-Resolution Image](#) | [Print Version](#) |

Current NC Drought Assessment

NEW

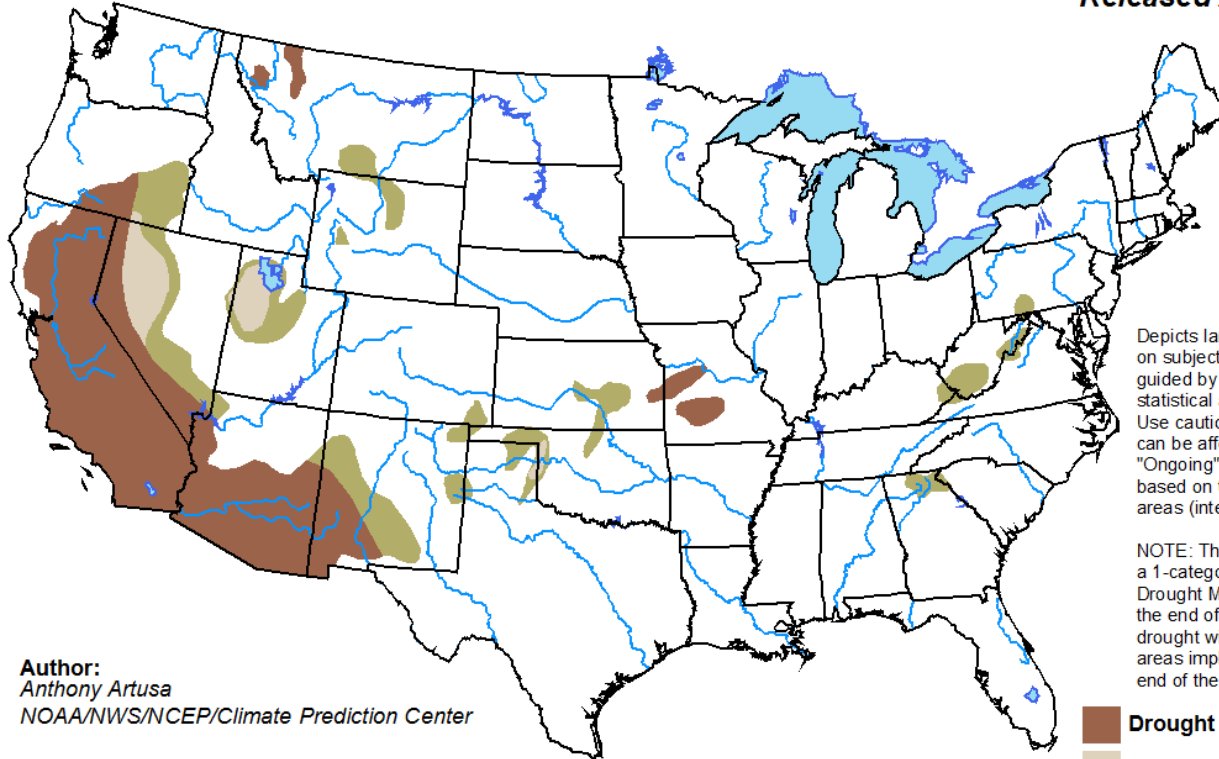
Most of North Carolina is classified as D0 or Abnormally Dry going into May.

Monthly Drought Outlook

For May

U.S. Monthly Drought Outlook Drought Tendency During the Valid Period





Valid for May 2016
Released April 30, 2016

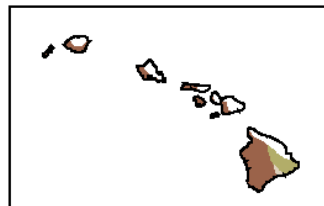
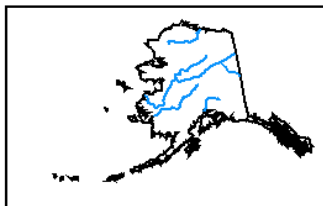


Depicts large-scale trends based on subjectively derived probabilities guided by short- and long-range statistical and dynamical forecasts. Use caution for applications that can be affected by short lived events. "Ongoing" drought areas are based on the U.S. Drought Monitor areas (intensities of D1 to D4).

NOTE: The tan areas imply at least a 1-category improvement in the Drought Monitor intensity levels by the end of the period, although drought will remain. The green areas imply drought removal by the end of the period (D0 or none).

Author:
Anthony Artusa
NOAA/NWS/NCEP/Climate Prediction Center

-  Drought persists
-  Drought remains but improves
-  Drought removal likely
-  Drought development likely



<http://go.usa.gov/3eZGd>