



Drought Information Statement for Southeast LA and Southwest MS

Valid November 16, 2023

Issued By: NWS New Orleans/Baton Rouge

Contact Information: sr-lix.webmaster@noaa.gov

- This product will be updated Nov 23, 2023 or sooner if drought conditions change significantly.
- Please see all currently available products at <https://drought.gov/drought-information-statements>.
- Please visit <https://www.weather.gov/lix/DroughtInformationStatement> for previous statements.



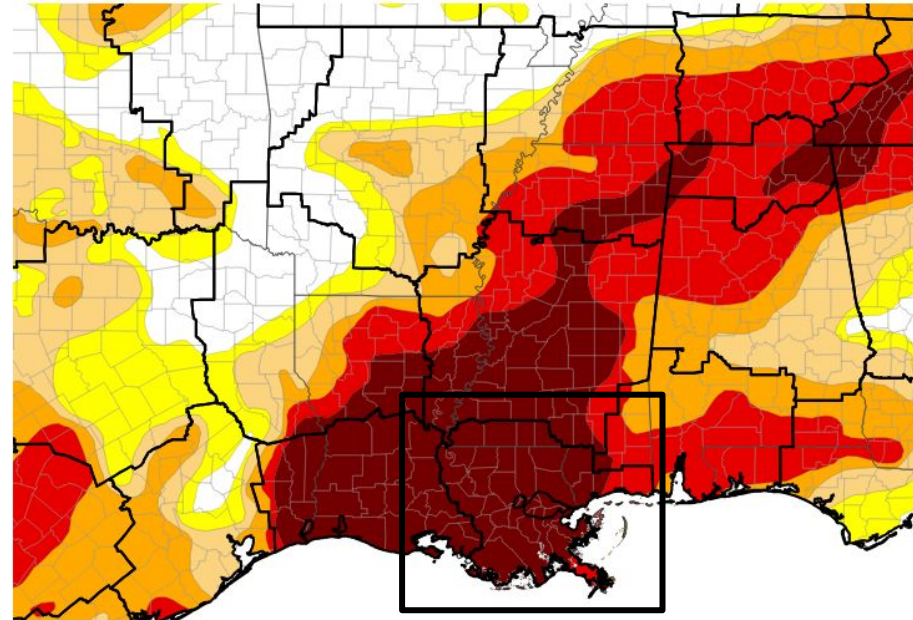


U.S. Drought Monitor

Link to the [latest U.S. Drought Monitor](#) for SE Louisiana and SW Mississippi

- **Exceptional Drought remains in place across portions of South Central Louisiana and Southwest Mississippi.**
- **Drought intensity and extent**
 - **D4 (Exceptional Drought): Extensive D4 drought covers all of SE LA and much Southern MS**
 - **D3 (Extreme Drought): Mainly Coastal MS**

U.S. Drought Monitor



U.S. Drought Monitor



Source(s): NDMC, NOAA, USDA; image courtesy of Drought.gov

Date Valid: 11/14/23

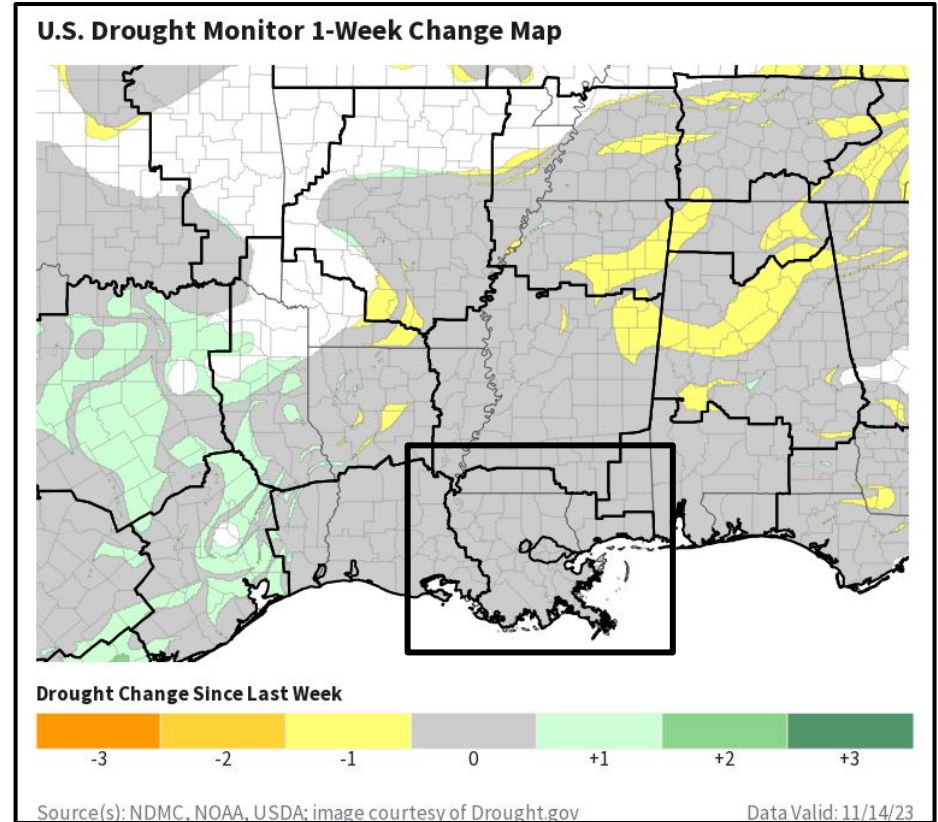




Recent Change in Drought Intensity

Link to the latest [4-week change map](#) for SE Louisiana and SW Mississippi

- **One Week Drought Monitor Class Change**
 - **Drought Worsened: No Change (Yellows)**
 - **No Change: No changes in category the week (Gray)**
 - **Drought Improved: No improvement was noted this week (Greens)**

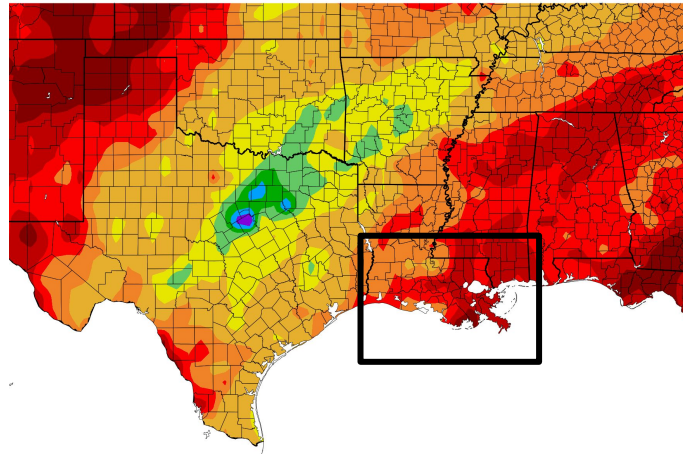




Precipitation

- The Coastal low brought some much needed need rain, although it wasn't much.
- Note: Rainfall after Tuesday morning (11/14) is not included in this week's Drought Monitor. It will be on the 23rd's Drought Monitor
- We still remain significantly below normal with rainfall amounts.

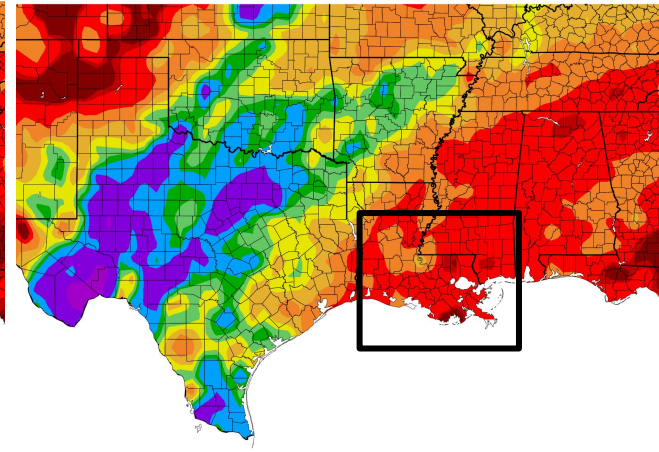
Precipitation (in)
10/17/2023 – 11/15/2023



11/16/2023 at HPRCC using provisional data.

NOAA Regional Clima

Percent of Normal Precipitation (%)
10/17/2023 – 11/15/2023



1/16/2023 at HPRCC using provisional data.

NOAA Regional Clir



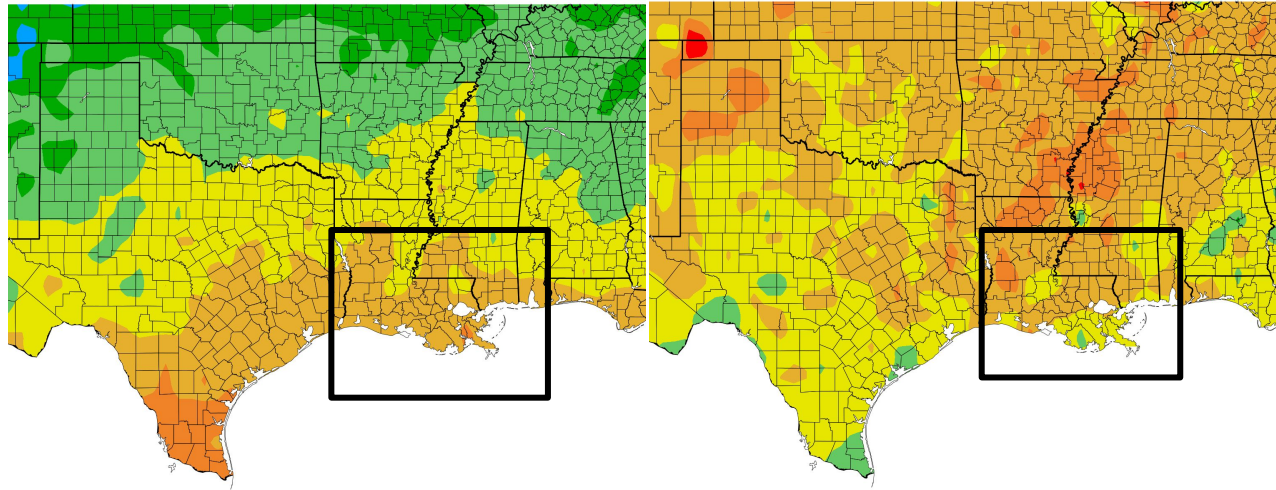


Temperature

- Temperatures over the last 30 days were averaging near normal or within a few degrees.
- Some portions of SE Louisiana and Southern MS are still 2 to 4 degrees.
- A cold front will pass through the area early next week bring us another cool down.

Temperature (F)
10/17/2023 – 11/15/2023

Departure from Normal Temperature (F)
10/17/2023 – 11/15/2023



6/2023 at HPRCC using provisional data.

NOAA Regional 6/2023 at HPRCC using provisional data.

NOAA Regional

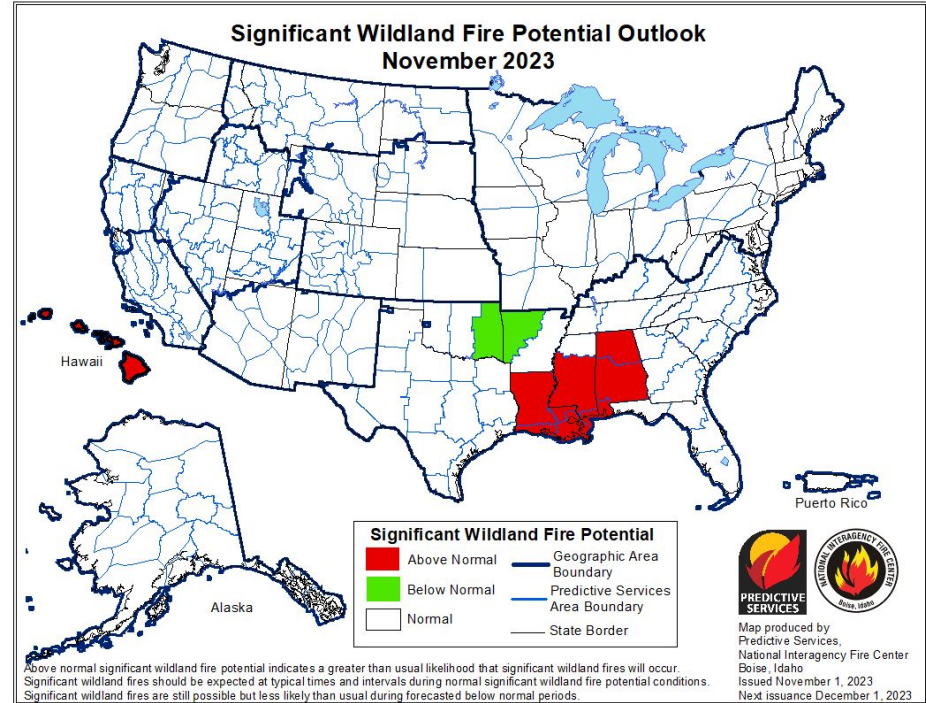




Fire Hazard Impacts

Link to [Wildfire Potential Outlooks from the National Interagency Coordination Center](#).

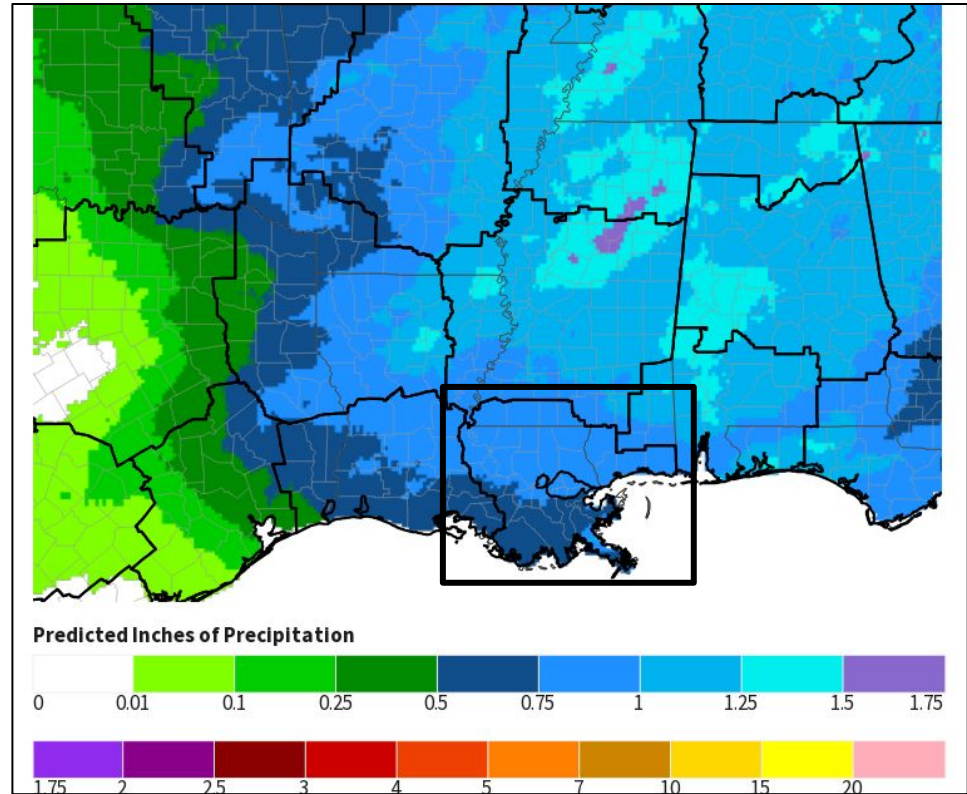
- The updated Outlook for November still has the wildfire potential remaining high.
- Conditions will likely continue until we have sufficient rains.
- Burn bans remain in effect for much of Southeast Louisiana
- Burning should be discouraged as forest fuels are dry.





Seven Day Precipitation Forecast

- Most of this next weekend will be dry.
- A cold front will move into the region early next week.
- There will be a chance for more widespread rainfall.
- The amounts may still be low, with around 1 inch possible.
- Cooler temperatures will return behind the front.

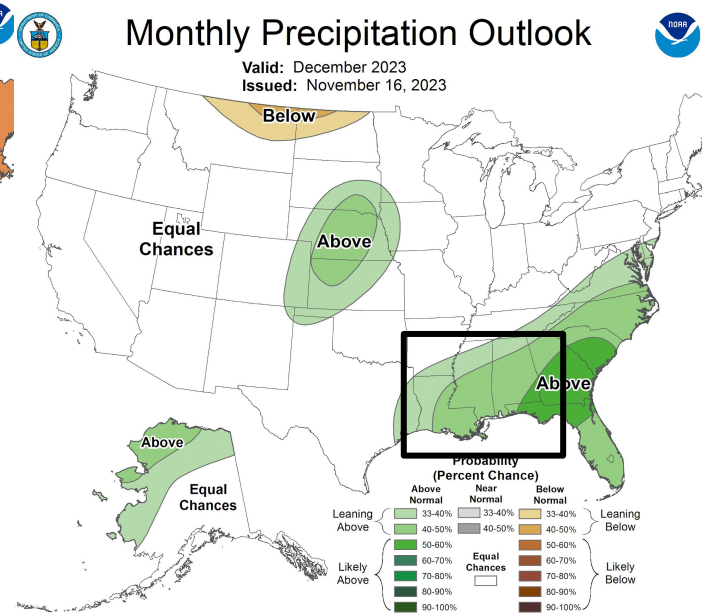
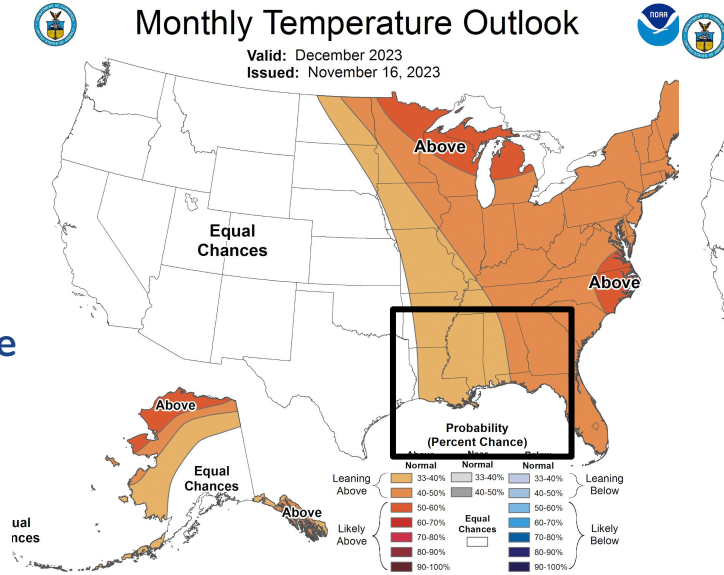




Long-Range Outlooks

The latest monthly and seasonal outlooks can be found on the [CPC homepage](#)

- The December's outlook hints that there is a chance that slightly above normal temperatures will continue.
- There is slight confidence that rainfall could be above average which would be beneficial considering the level of drought.

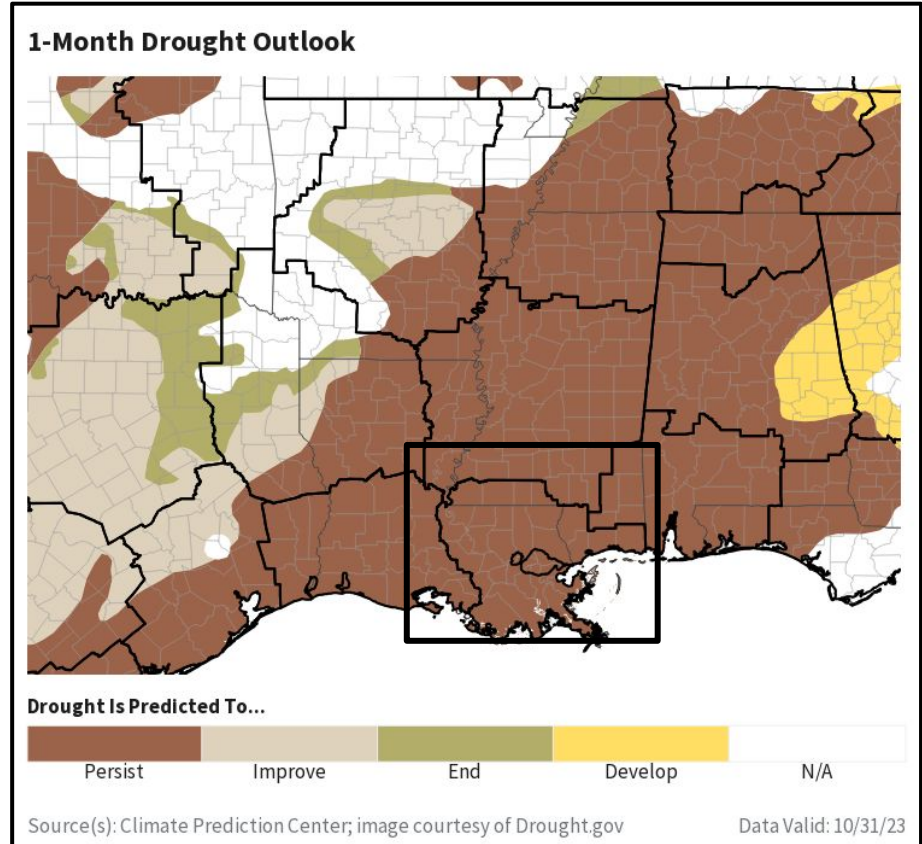




Drought Outlook

The latest monthly and seasonal outlooks can be found on the [CPC homepage](#)

- The Monthly Drought Outlook for November has the drought conditions persisting.
- Categories may improve or worsen at times depending on temperatures and rainfall





Summary of Impacts

Links: See/submit [Condition Monitoring Observer Reports \(CMOR\)](#) and view the [Drought Impacts Reporter](#)

Hydrologic Impacts

- Drinking water has been compromised for some communities along the Mississippi River due to salt water intrusion
- Recreational boating and commercial industry navigation are impacted by low water levels

Agricultural Impacts

- Reports of poor crop conditions and decreased harvests
- Increased livestock sales due to lack of resources; poor grazing conditions
- Winter planting could be delayed and crops affected

Fire Hazard Impacts

- A wildfire threat remains and burn bans will likely continue

Mitigation Actions

- Some areas are encouraging water voluntary water restrictions
- Mandatory may become necessary
- Water Conservation is encouraged in drought areas
- Please refer to your municipality, water provider, and local Emergency Management for mitigation information

Other Information

- Please encourage use of the CMOR (link above) to report drought impacts





For Questions or comments please contact:

julie.lesko@noaa.gov

