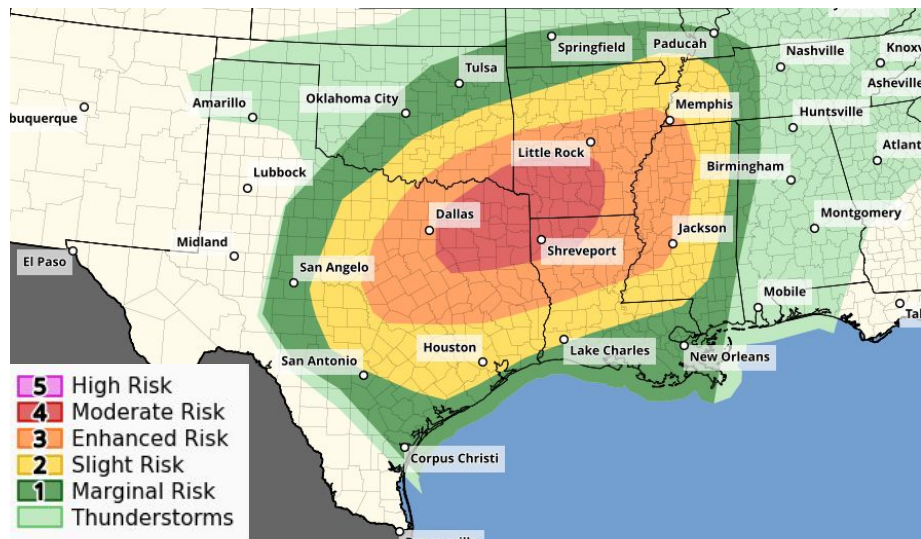


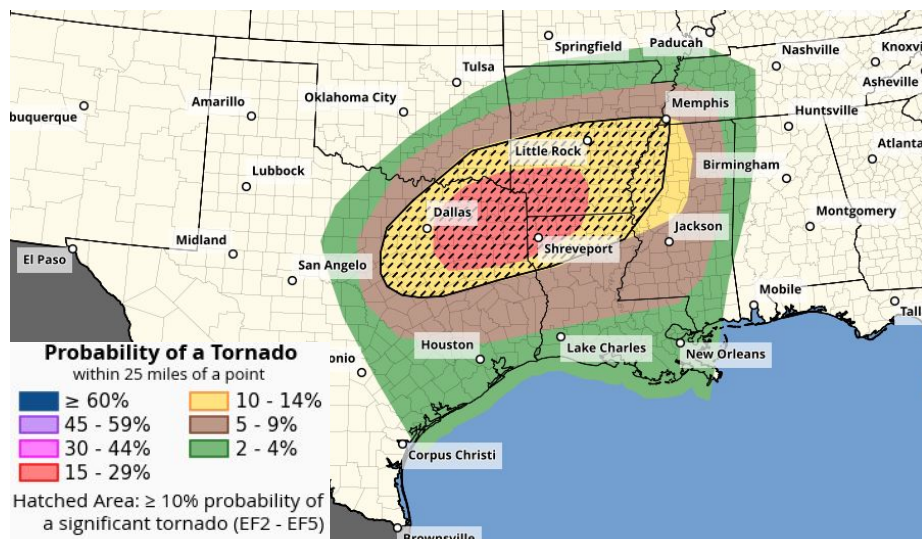
# Thursday - Thursday Night Severe Weather Outlook



## Overall Risk



## Tornado Risk

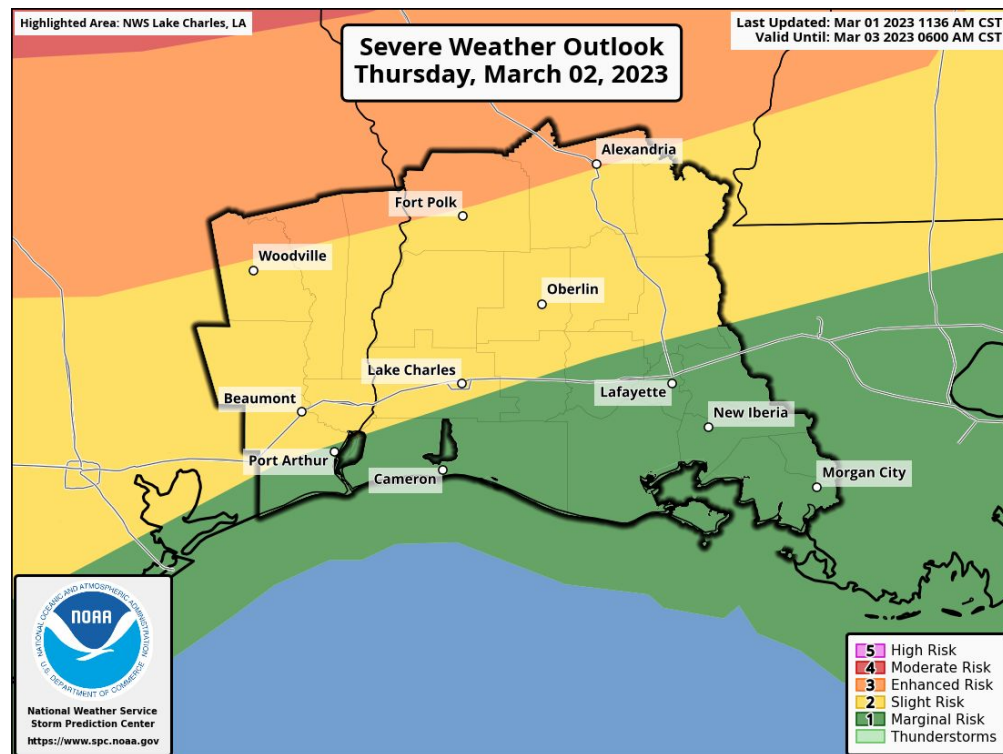




# Severe Weather Outlook: Thursday March 2nd, 2023

## Key Messages:

- **Impacts:** A **Marginal** (level 1 out of 5) to **Slight** (level 2 out of 3) to **Enhanced** (level 3 out of 5) Potential Risk for severe thunderstorms. The main hazard is damaging straight line wind gusts, however a few quick spin up tornadoes, and large hail can not be ruled out.
- **Where:** The **Enhanced** Potential Risk is north a Woodville to Alexandria line, the **Slight** Potential Risk is northwest of a Port Arthur to Lake Charles to Opelousas line with the **Marginal** Potential Risk southeast of that line.
- **When:** A line of storms Thursday evening into Thursday night. Mainly between 9 pm and 3 am.
- **Confidence:** There is High confidence in the development of a line of storms. Medium confidence in the severe storms along the line.



National Oceanic and  
Atmospheric Administration

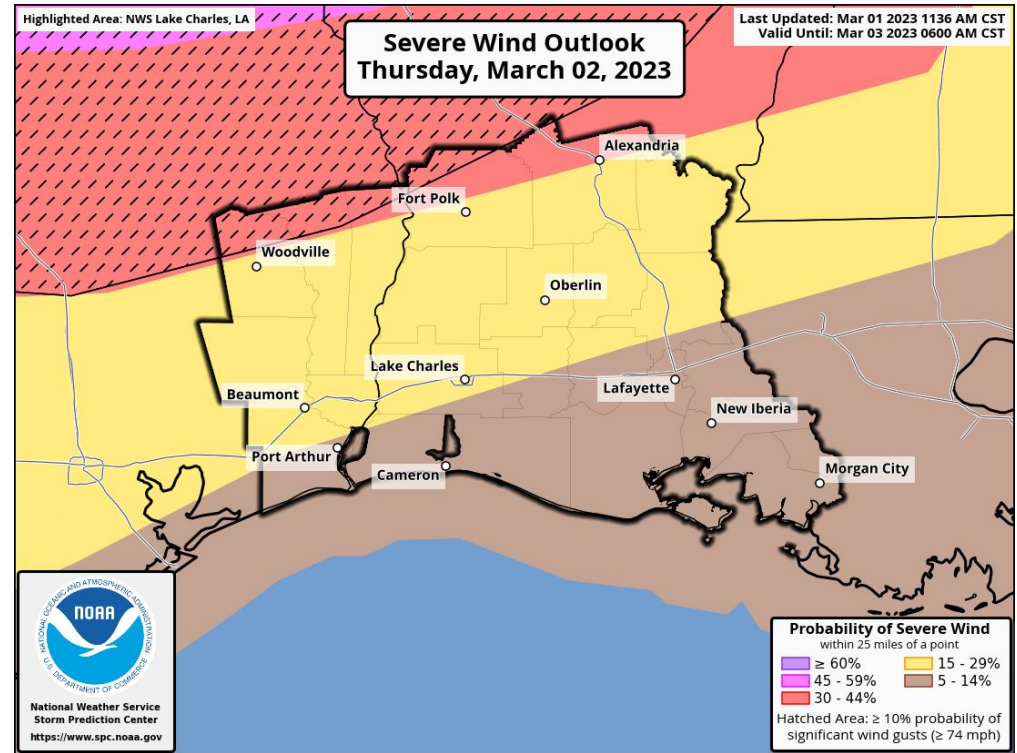
U.S. Department of Commerce

National Weather Service  
Lake Charles, LA



# Severe Wind Probabilities: Thursday March 2nd, 2023

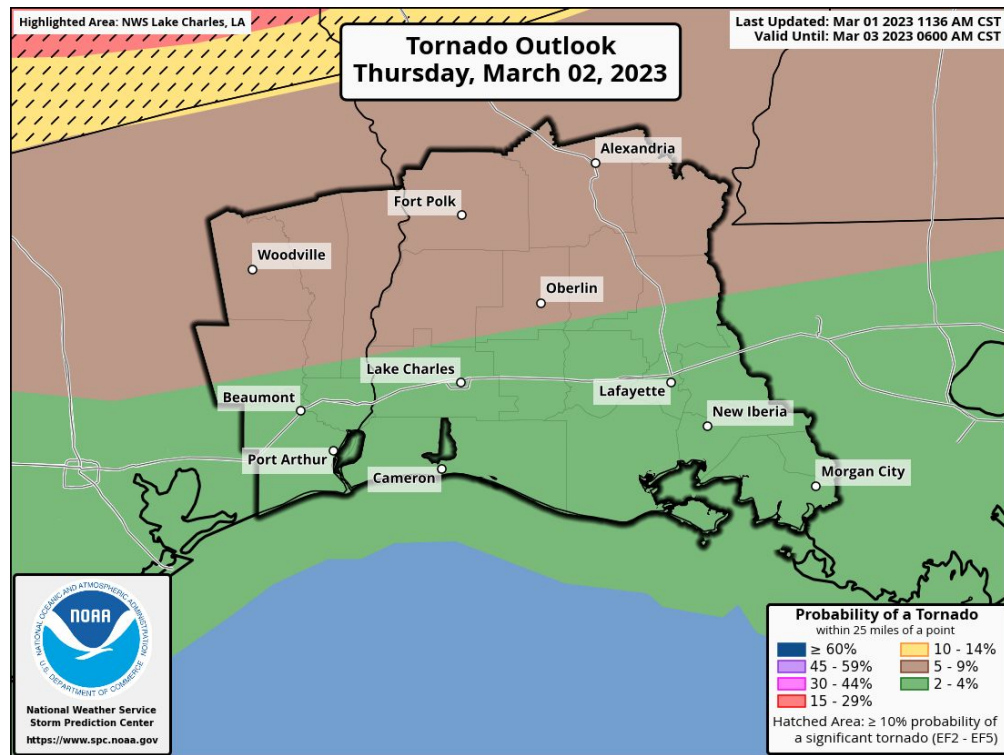
- **Risk Level 3:** 30 to 44 percent chance of thunderstorm wind gusts over 58 mph north of a Woodville to Alexandria line.
- **Risk Level 2:** 15 to 29 percent chance of thunderstorm wind gusts over 58 mph northwest of a Port Arthur to Lake Charles to Opelousas line.
- **Risk Level 1:** 5 to 14 percent chance of thunderstorm wind gusts over 58 mph southeast of a Port Arthur to Lake Charles to Opelousas line.



# Tornado Probabilities: Thursday March 2nd, 2023



- **Risk Level 2:** 5 to 9 percent chance of a tornado north of a Beaumont to Opelousas line.
- **Risk Level 1:** 2 to 4 percent chance of a tornado south of a Beaumont to Opelousas line.

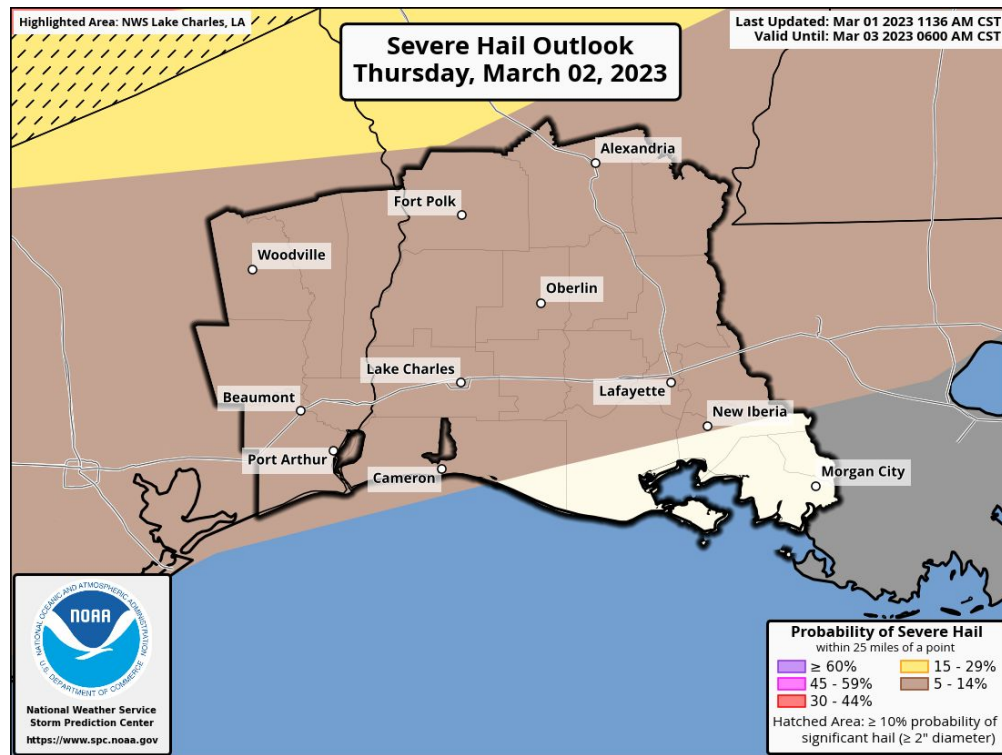




# Severe Hail Probabilities: Thursday March 2nd, 2023



→ **Risk Level 1:** 5 to 14 percent chance of Hail 1 inch in diameter or larger.

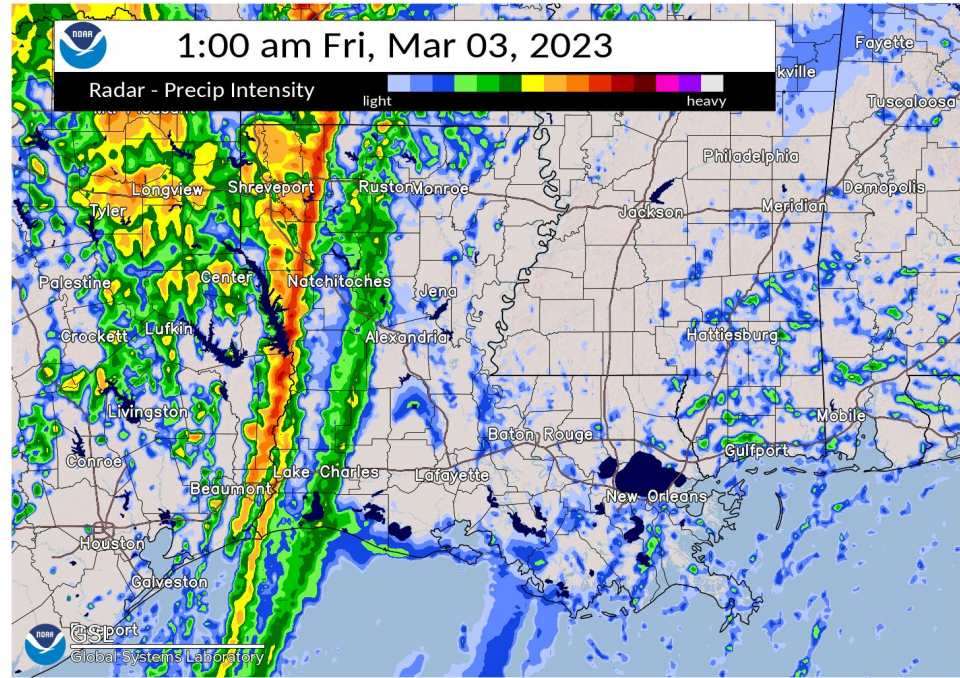
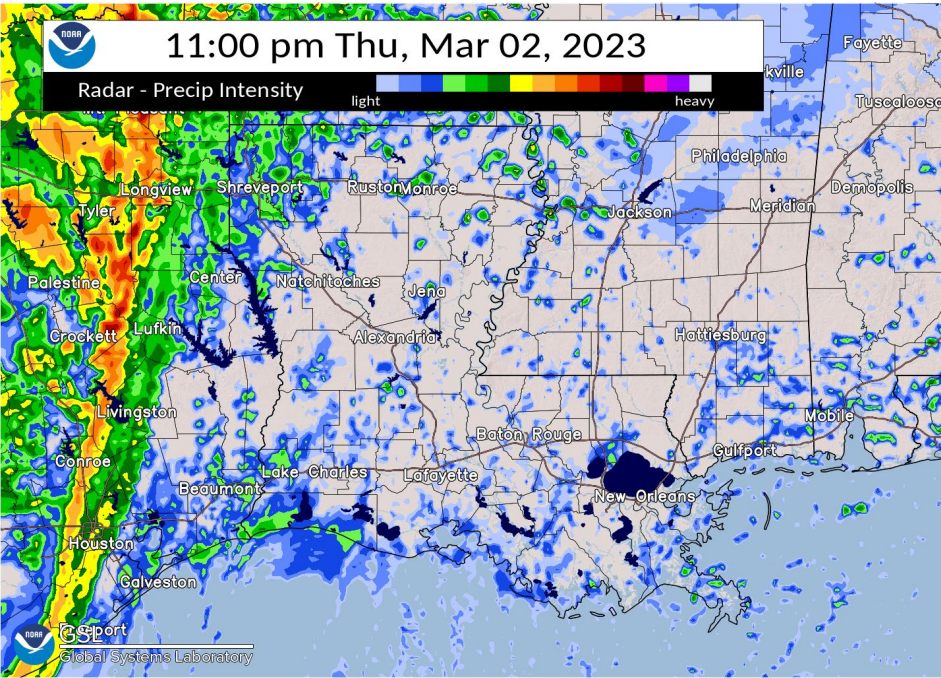


National Oceanic and  
Atmospheric Administration

U.S. Department of Commerce

National Weather Service  
Lake Charles, LA

# Timing: What Radar Could Look Like Thursday Night / Friday Morning



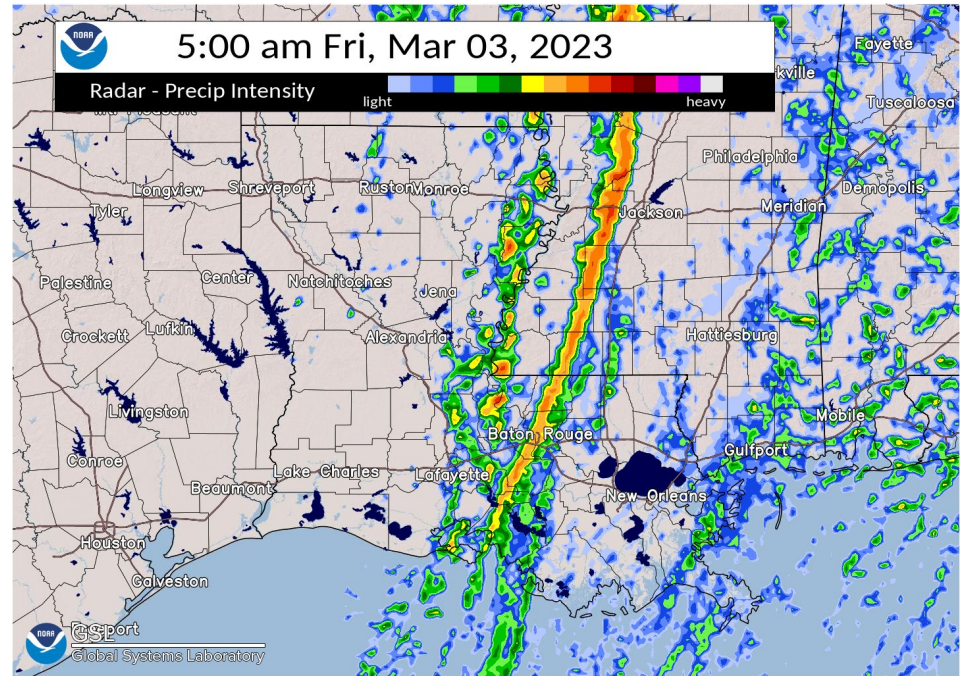
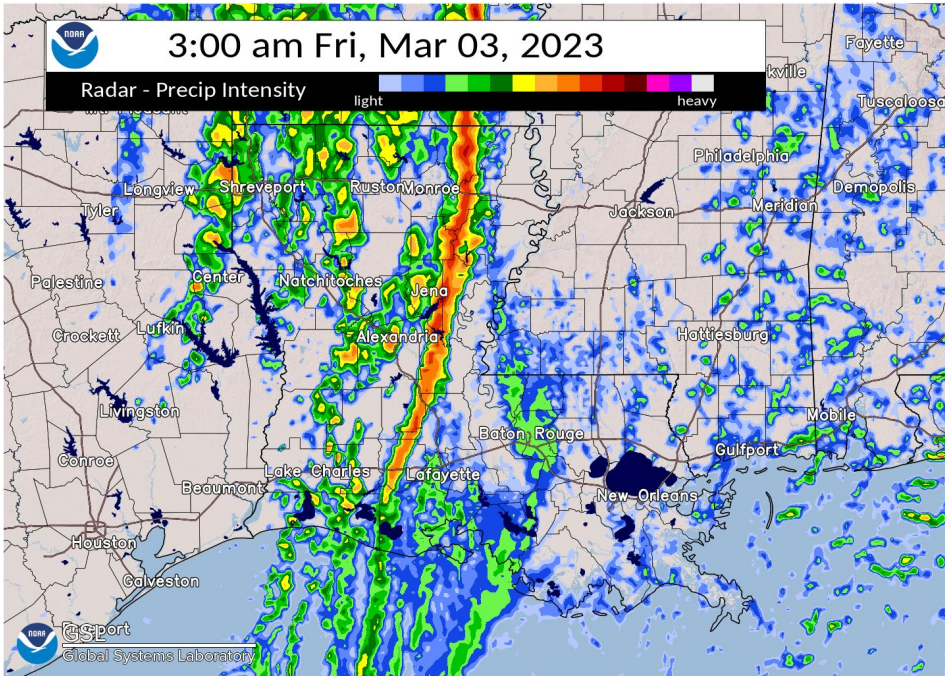
National Oceanic and  
Atmospheric Administration

U.S. Department of Commerce

National Weather Service  
Lake Charles, LA



# Timing: What Radar Could Look Like Thursday Night / Friday Morning



# Forecast Wind and Wind Gusts 3 pm Thursday March 2nd, 2023

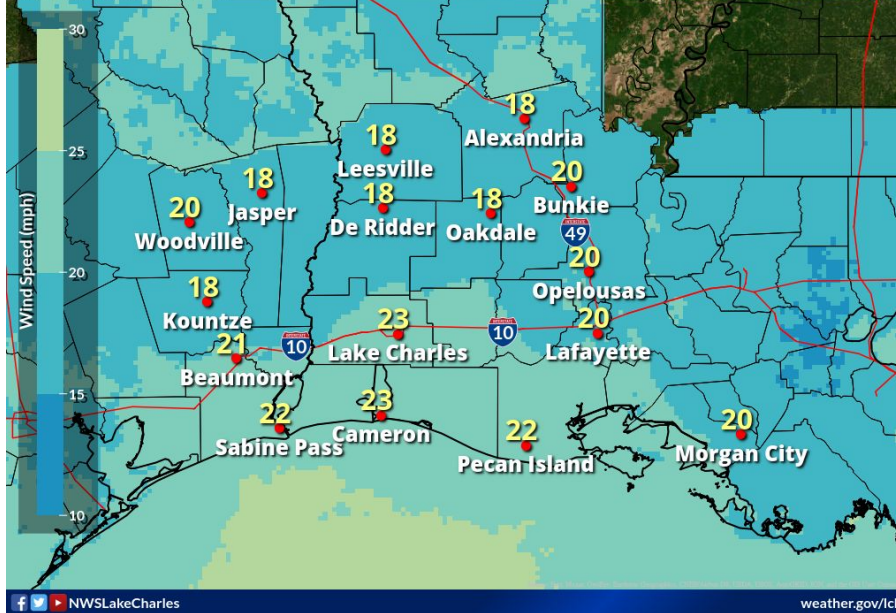


Late Thursday afternoon: South winds near 20 to 25 mph with gusts between 25 and 30mph.

## Sustained Winds 3 pm Thursday

South winds near 20 to 25 mph.

Weather Forecast Office  
Lake Charles, LA  
Issued Mar 01, 2023 5:44 AM CST



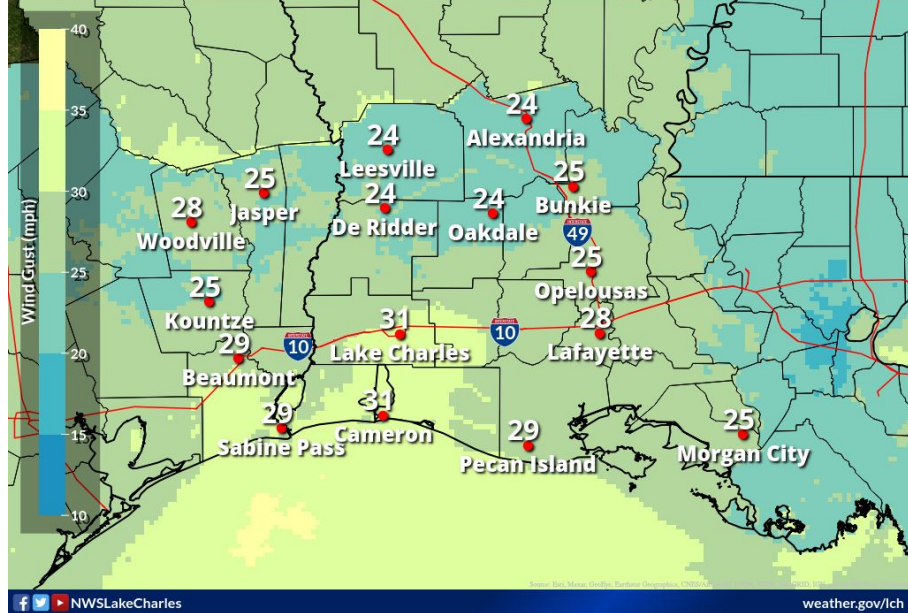
NWSLakeCharles

weather.gov/lch

## Wind Gusts 3 pm Thursday

Wind gusts 25 to 30 mph.

Weather Forecast Office  
Lake Charles, LA  
Issued Mar 01, 2023 5:48 AM CST



NWSLakeCharles

weather.gov/lch



National Oceanic and  
Atmospheric Administration

U.S. Department of Commerce

National Weather Service  
Lake Charles, LA



# Small Craft Advisory and Gale Watch for Marine Zones



## Gale Watch

Sustained winds of 25 to 30 kts with gusts of up to 40 kts

Weather Forecast Office  
Lake Charles, LA

Issued Mar 01, 2023 1:49 PM CST



Small Craft Advisory  
for the lakes and bay.

Gale Watch for the  
Gulf of Mexico.

## TIMING

→ **Small Craft Advisory**

Starting tomorrow at 4PM for all areas and continuing for the lakes and bay until 1PM Friday.

→ **Gale Watch**

For the near and offshore waters from 7PM tomorrow night to 7AM Friday morning.

→ **Small Craft Advisory**

Going from Gale to Small Craft for the near and offshore waters from 7AM to 1PM Friday.

NWSLakeCharles

[weather.gov/lch](http://weather.gov/lch)



**National Oceanic and  
Atmospheric Administration**

U.S. Department of Commerce

**National Weather Service  
Lake Charles, LA**



# Manufactured/Mobile Home Tornado Safety

## 3 Step Plan

### STEP 1:

#### Every Day

- ✓ **Identify A Safe Place:** Have a family plan that includes ideas for shelter spaces emergency locations, and accommodations for pets.
- ✓ **Know Evacuation Routes:** Have routes planned out for evacuating your home in the event of severe weather. Keep up to date on potential road closures in your community.
- ✓ **Timing:** Know how long it will take you to evacuate your home during severe weather.
- ✓ **Be Weather-Ready:** Check the forecast frequently to see if you are at a risk of severe weather. Listen to local news or a NOAA Weather Radio to stay informed about tornado watches and warnings.
- ✓ **Sign Up for Notifications:** Know how to get watches and warning in your community. Check media alerts in your area.

### STEP 2:

#### Day Before Severe Weather

- ✓ **Verify Your Shelter:** Check with your community's Emergency Management on if shelters will be open in your area. Ask questions & consider the needs of your pets.
- ✓ **Coordinate with Family/Friends:** Share your plans with family and friends, and discuss spending time at their home if it is safer.
- ✓ **Help Your Neighbor:** Encourage those around you to prepare for the possibility of severe weather. Check on them and offer to help them get to a safe place.
- ✓ **Stay Weather-Ready:** Continue to listen to local news or a NOAA Weather Radio to stay updated about future watches and warnings.
- ✓ **Transportation:** Make sure all cars are filled up with enough gas to get you to a sturdier shelter. If you do not have a car, contact friends or family to prepare transportation.

### STEP 3:

#### Day of Severe Weather

- ✓ **Execute Your Plan:** If a Tornado Watch is issued in your community and storms are headed toward your area, it is time to evacuate your home to a sturdier shelter. Take important documents with you and don't forget your pets.
- ✓ **Stay Informed:** Keep listening to local news or NOAA Weather Radio for more updates about tornado watches and warnings impacting your area.
- ✓ **Contact Your Family and Loved Ones:** Let your family and close friends know where you are evacuating to. Ask if family and close friends in vulnerable housing need to relocate as well.
- ✓ **Last Resort:** If a Tornado Warning is issued for your community before you evacuate, it may already be too dangerous to evacuate to a safer location. Last resort options include driving away in a vehicle (seatbelt on and keep car on to activate airbags and safety features) or moving to a protected area outside shielded from potential debris or flooding.

**You can replace your possessions.....but you cannot replace a life.**



# Manufactured/Mobile Home Tornado Safety



## TORNADO SAFETY



FOR MOBILE HOMES



### Tornadoes Can Be Deadly

**72%** of all tornado fatalities occur in homes (permanent, mobile, manufactured, etc.)

**54%** of the housing fatalities occur in a mobile/manufactured home, even though mobile and manufactured home only make up **6%** of the US housing stock.

- If you are in a mobile home, it is **NOT** safe from a tornado, and you **MUST** seek an alternative shelter before storms hit.
- Make plans ahead of time to stay with friends or family who live in a sturdy building.
- Your last resort is to lie low and flat on your stomach with your hands over your head in a ditch or ravine.





- NWS Lake Charles Phone Number: **(337) 477-5285 ext. 1**
- NWS Lake Charles Webpage: [www.weather.gov/LCH](http://www.weather.gov/LCH)
- Online Severe Weather Reporting: [stormReport](https://stormreport.noaa.gov)
- NWS Lake Charles Facebook [www.facebook.com/NWSLakeCharles](https://www.facebook.com/NWSLakeCharles)
- NWS Lake Charles Twitter [twitter.com/NWSLakeCharles](https://twitter.com/NWSLakeCharles)

**Next Update:** Tomorrow Morning (3/2/2023) at 7 AM





**Remain Weather Aware Thursday PM.**

**Have Multiple Methods of Receiving  
Watches and Warnings.**



**National Oceanic and  
Atmospheric Administration**

U.S. Department of Commerce

**National Weather Service  
Lake Charles, LA**