



Tropical Storm Beryl Briefing

5:00 PM CDT

Saturday, Jul 6, 2024



Situation Overview

Tropical Storm Beryl

- Tropical Storm Beryl (max winds 60 mph) will move through the southwestern Gulf of Mexico today, then strengthen into a hurricane on Sunday as it moves to the northwest and approaches the middle Texas coast.
- Models are still showing good consistency with timing/location of the track of Beryl...forecast to make landfall on the middle Texas coast on Monday AM....weakening as it moves inland.
- **A Tropical Storm Warning has been issued for Lavaca, DeWitt Counties**
- **Heavy rain is the biggest threat across the far eastern areas of South Central Texas**, with highest rainfall amounts of 5 -10 inches of rain are possible Mon-Tue. Locally higher amounts possible near and east of the track. **A Flood Watch has been issued** for that area.
- Additional Impacts across far eastern areas of South Central Texas could also include gusty winds (50 mph) along with some isolated tornadoes associated with rainbands.

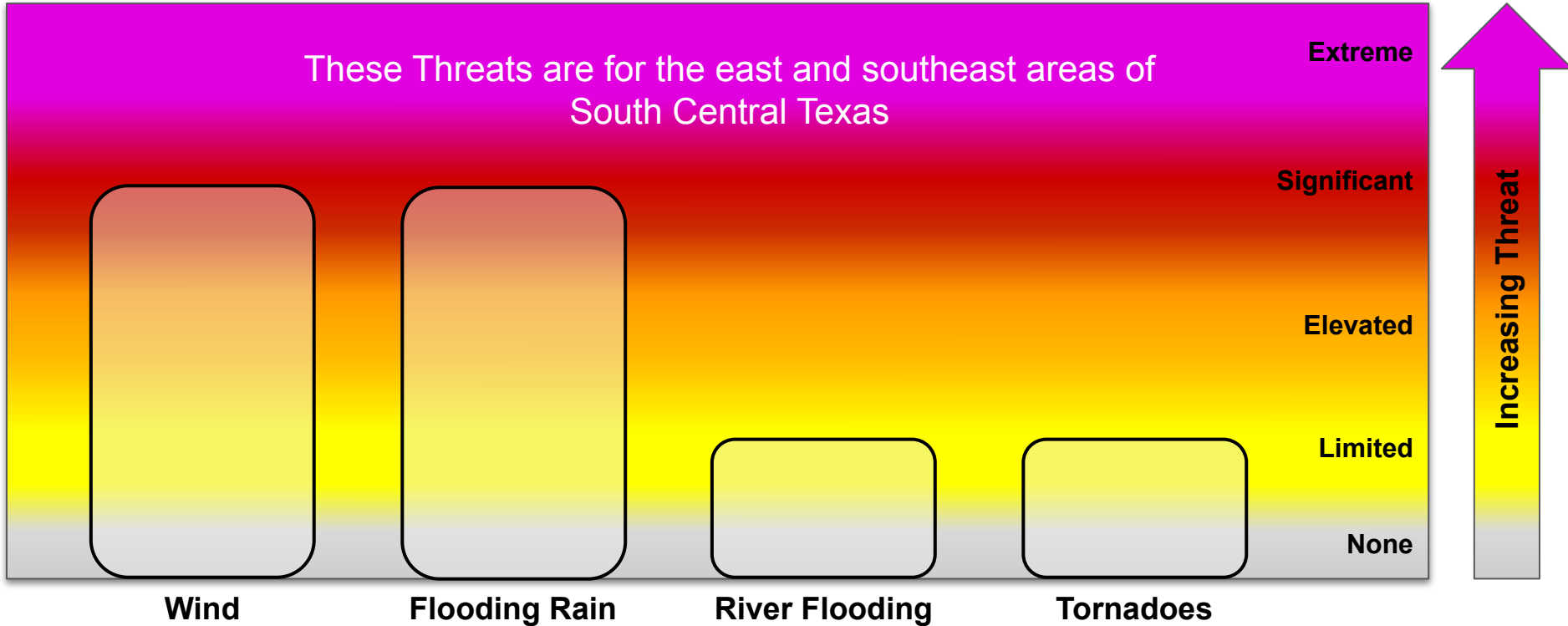


Threat Levels

Tropical Storm Beryl

For information on specific hazards in this area, please go to: <https://www.weather.gov/srh/tropical?office=ewx>

These Threats are for the east and southeast areas of South Central Texas



Wind

Flooding Rain

River Flooding

Tornadoes

Extreme

Significant

Elevated

Limited

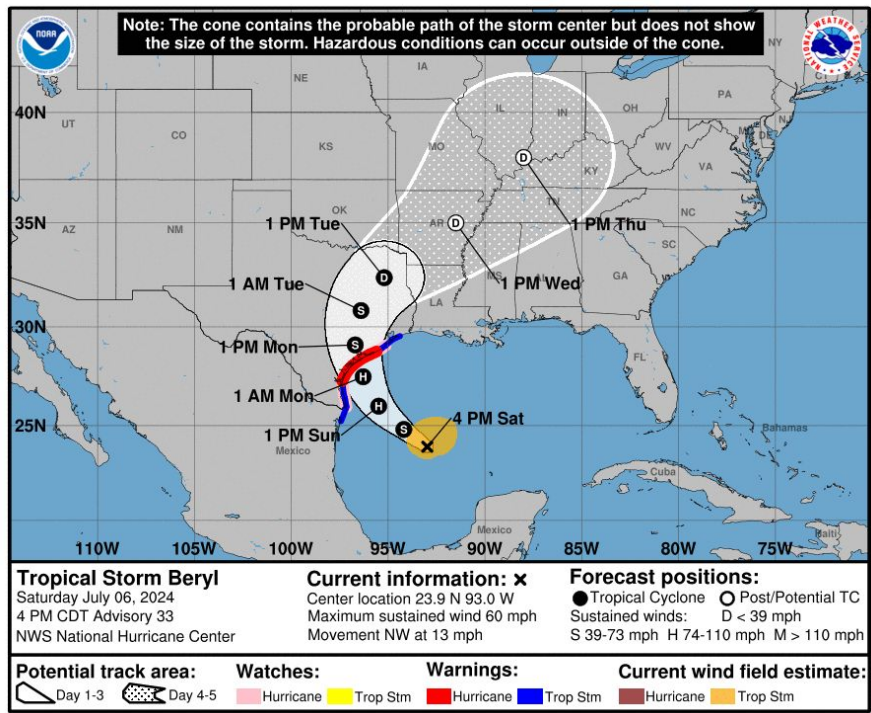
None

Increasing Threat



Situation Overview

Tropical Storm Beryl



NOTE: Do not focus on the exact track.
Impacts can occur well outside the area enclosed by the cone.

Key Messages

- Tropical Storm Beryl is moving over the southwestern Gulf of Mexico. It is forecast to strengthen into a hurricane on Sunday as it moves to the northwest and approaches the Texas coast.
- Forecast models are showing good consistency that landfall will likely be on the middle Texas coast on Monday morning.
- Rain totals of 5-10 inches, locally higher amounts, are possible along and east of the path of Beryl. This area of concern is well east of I-35...across the far eastern areas of South Central Texas. Flooding could be a concern in this area.

Increasing surf conditions and dangerous rip currents are likely for beaches along the Texas coast this weekend and into next week. Dangerous swimming conditions are forecast.



Tropical Weather Outlook

Tropical Storm Beryl



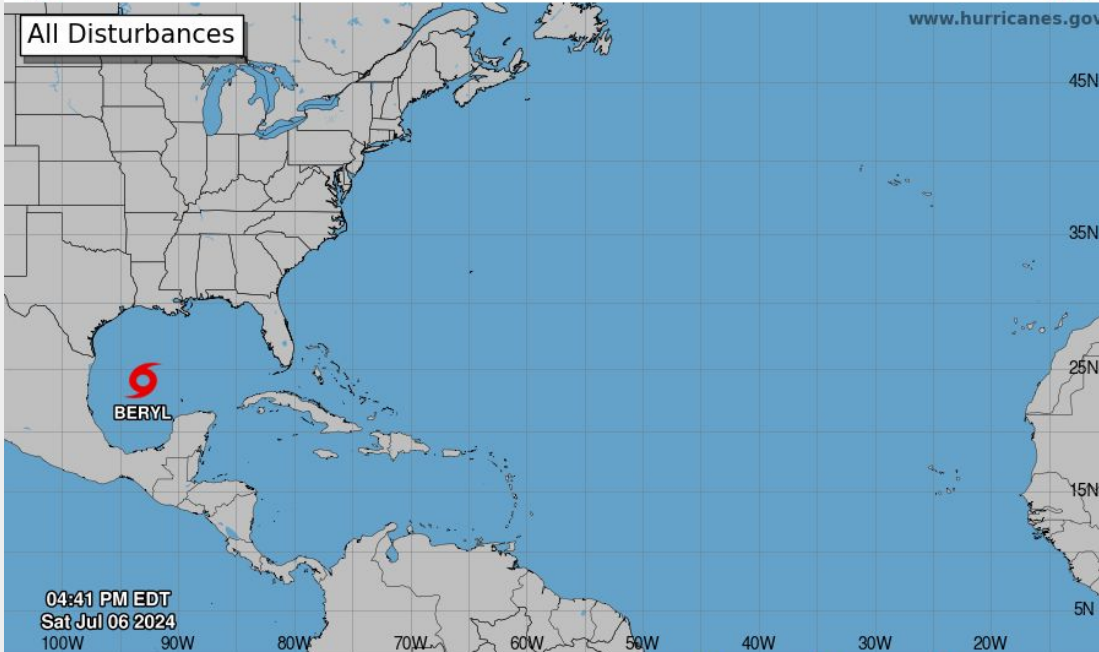
Seven-Day Graphical Tropical Weather Outlook

National Hurricane Center Miami, Florida



www.hurricanes.gov

All Disturbances



04:41 PM EDT
Sat Jul 06 2024

Current Disturbances and Seven-Day Cyclone Formation Chance: < 40% 40-60% > 60%

Tropical or Sub-Tropical Cyclone: Depression Storm Hurricane

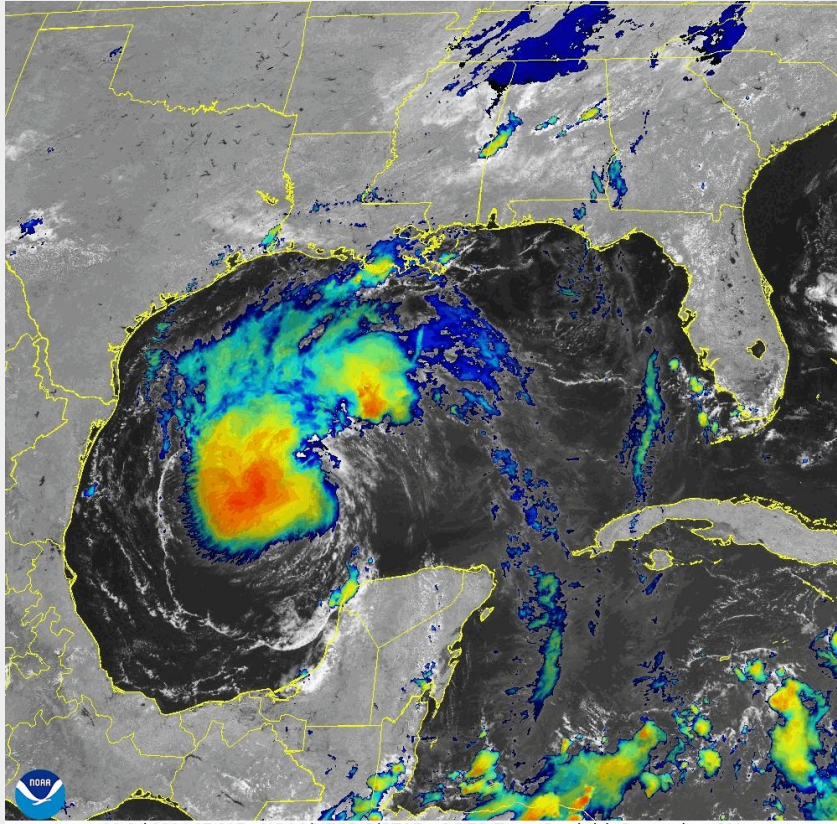
Post-Tropical Cyclone or Remnants

- Other than Beryl...there is currently no other tropical system or area of disturbed weather that the NHC is currently tracking in the Atlantic Basin



Current Satellite View

Tropical Storm Beryl



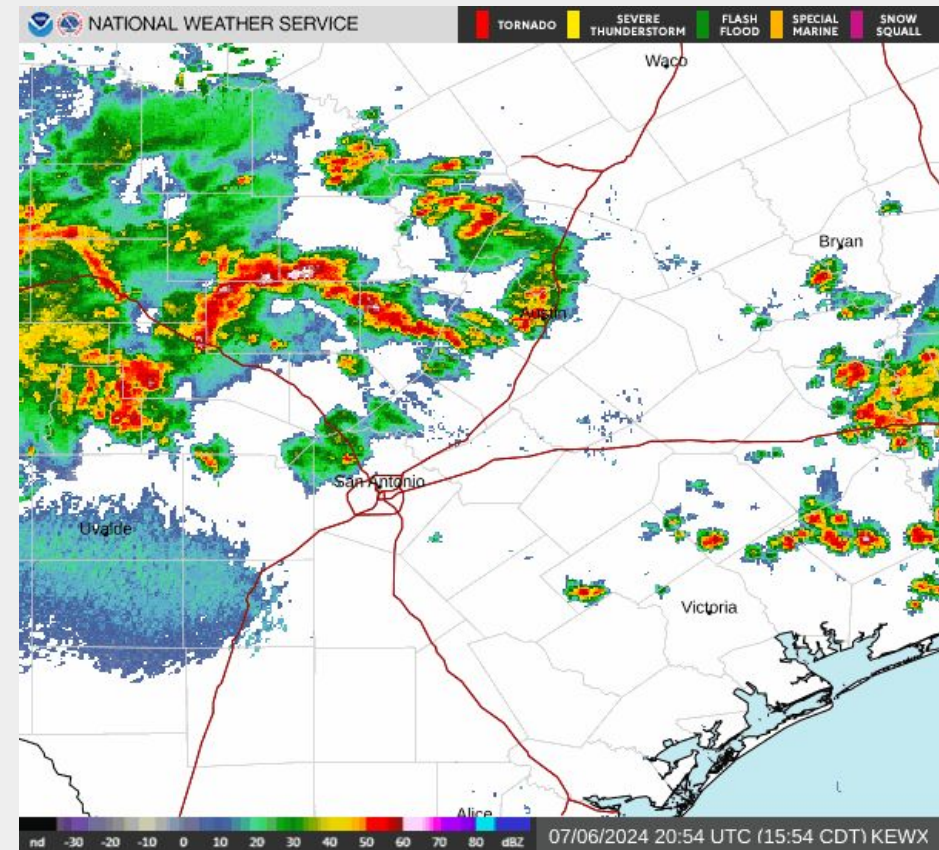
06 Jul 2024 17:01Z - NOAA/NESDIS/STAR - GOES-East - Sandwich Composite - GM

Current satellite view of Beryl...making a bit of a comeback...possibly a sign of restrengthening

There is some dry air and increased wind shear in the area so strengthening should be slow and gradual into tomorrow.



Current Radar View

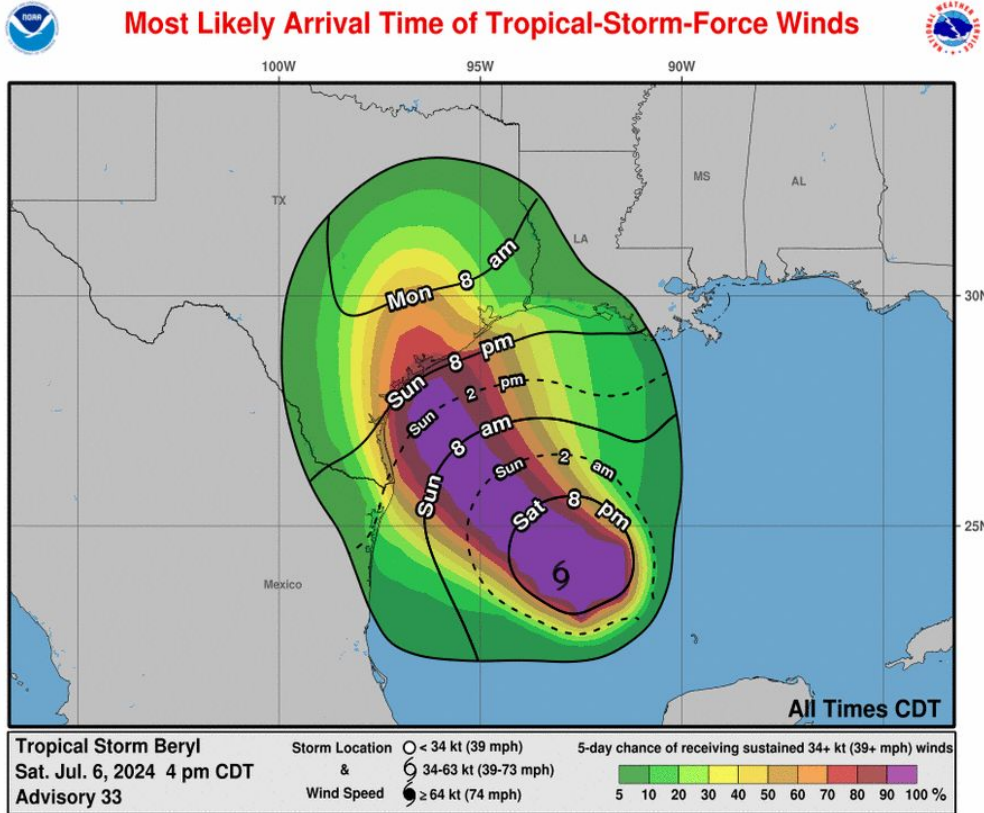


- The radar has become active today as showers and storms form due to a weak cold front that moved through this morning.
- Locally heavy downpours are possible with some areas receiving 1-2 inches of rain. Localized ponding of water on roadways is possible



Most Likely Time of Arrival

Tropical Storm Beryl



- Probabilities for tropical storm force winds affecting eastern areas of South Central Texas have increased.
- Will continue to watch the evolving wind threat.
- A Tropical Storm Warning is in effect for DeWitt and Lavaca Counties in South Central Texas
- If Beryl strengthens more than is forecast, additional Counties may be added to the Warning.



Tropical Storm Warnings

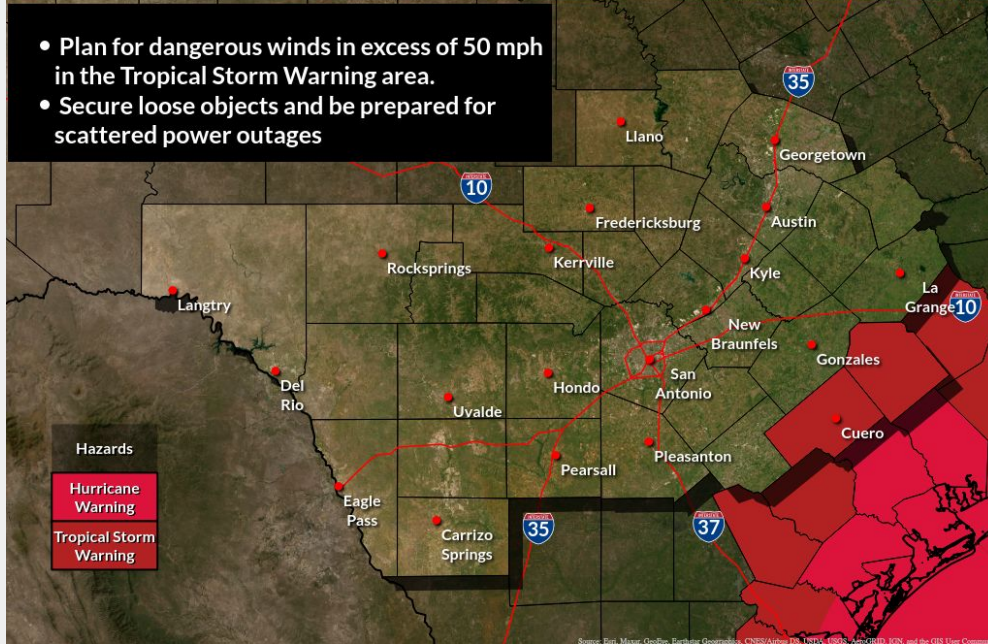
Tropical Storm Beryl

Tropical Storm and Hurricane Warnings

Weather Forecast Office
Austin/San Antonio, TX
Issued Jul 06, 2024 4:24 PM CDT



- Plan for dangerous winds in excess of 50 mph in the Tropical Storm Warning area.
- Secure loose objects and be prepared for scattered power outages



NWSSanAntonio

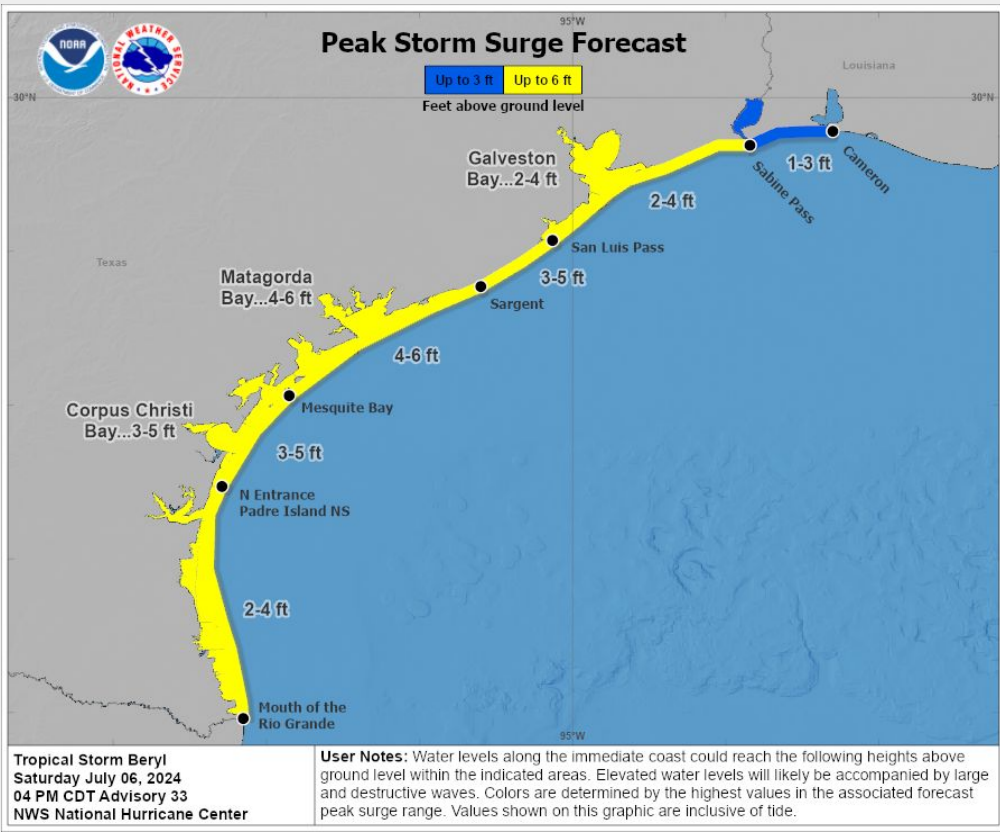
weather.gov/ewx

- Tropical Storm Warnings have been issued for Lavaca and DeWitt Counties
- Sustained winds could reach Tropical Storm force (greater than 39 mph) late Sunday night, better chances on Monday
- Gusts to 60 mph are possible in the warning area.



Peak Storm Surge

Tropical Storm Beryl



Any interests along the coast should check with the local NWS offices (Brownsville, Corpus, Houston, Lake Charles) for surge forecasts

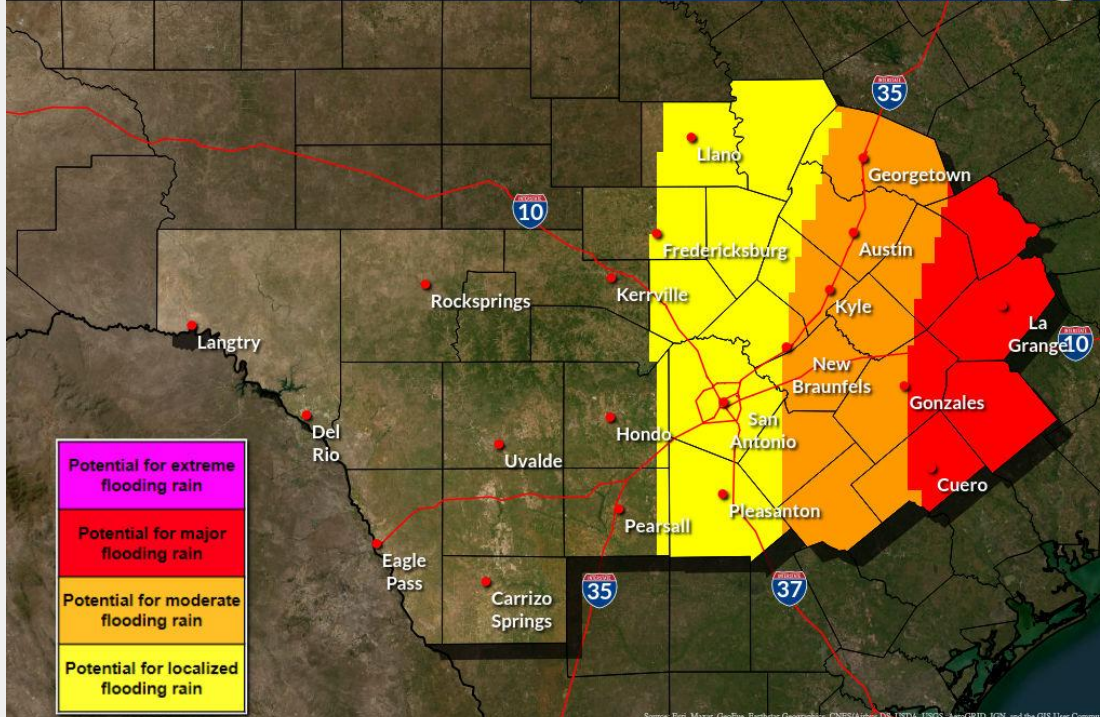


Inland Flooding Impacts

Tropical Storm Beryl

Flooding Rain Threat

Weather Forecast Office
Austin/San Antonio, TX
Issued Jul 06, 2024 3:51 PM CDT



Source: Esri, Maxar, GeoEye, Earthstar Geographics, CNES/Airbus DS, USDA, USGS, AeroGRID, IGN, and the GIS User Community

weather.gov/ewx

- With the current forecast track, the threat for flooding rains will increase as you go east of I-35.
- The highest rain totals will be confined near and to the east of the track of Beryl (5-10 inches, isolated higher totals)
- Localized flooding and minor flooding on area rivers will be the main impacts.

f t v NWSSanAntonio

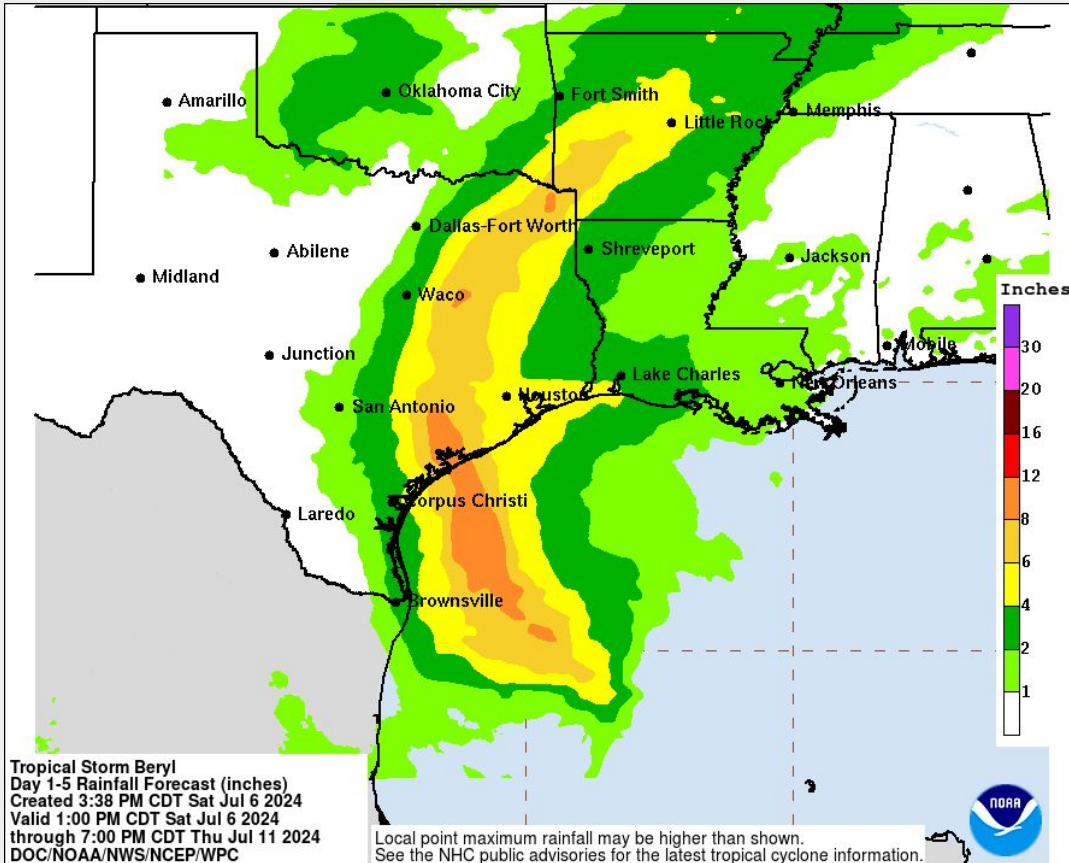
Last updated: 7/6/2024 4:20 PM CDT

National Weather Service - Austin/San Antonio, TX



Expected Storm Total Rainfall

Tropical Storm Beryl



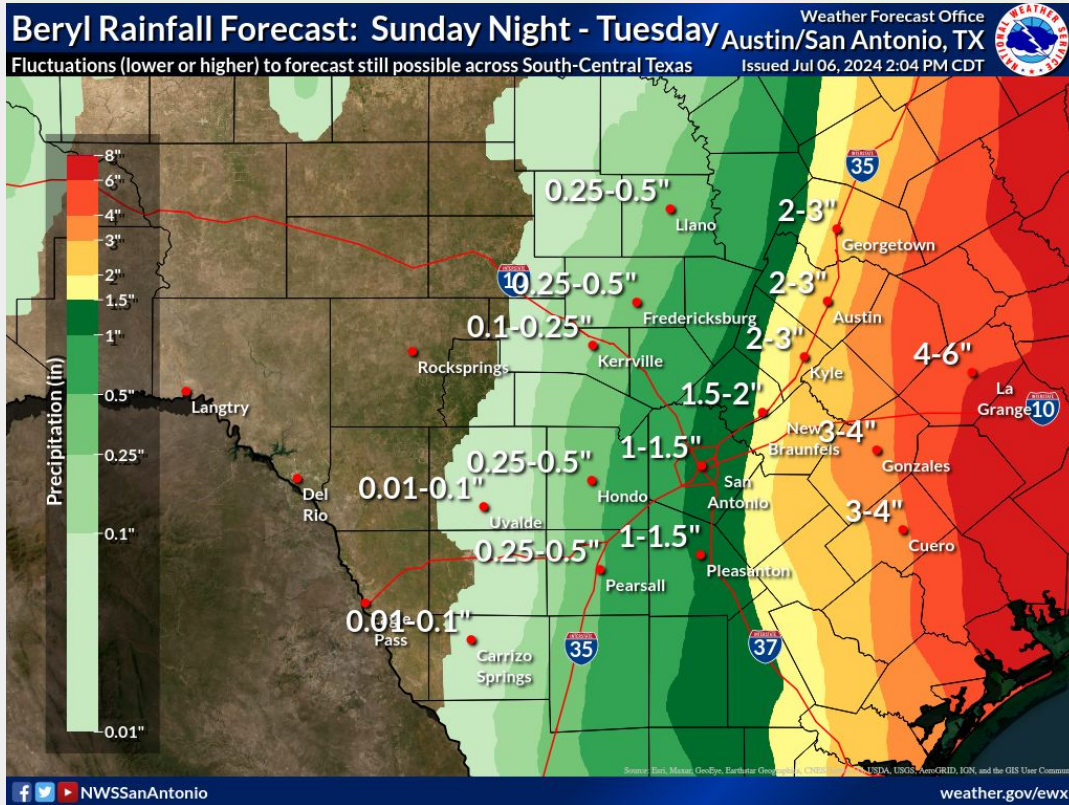
Forecast Rainfall Amounts:

- Highest rainfall totals will likely be along and just east of the forecast path of Beryl, east of the I-35 and I-37 corridors
- Some fluctuations (lower or higher) in the rainfall forecast are still possible across South Central Texas



Expected Storm Total Rainfall

Tropical Storm Beryl...close up view of rainfall across South Central Texas



- Our best guess on where the heaviest rain will occur through Tuesday
- Much of the rain will fall on Monday as Beryl makes landfall
- There should be a substantial decrease in rain amounts west of Beryl's path



Flood Watch

Tropical Storm Beryl

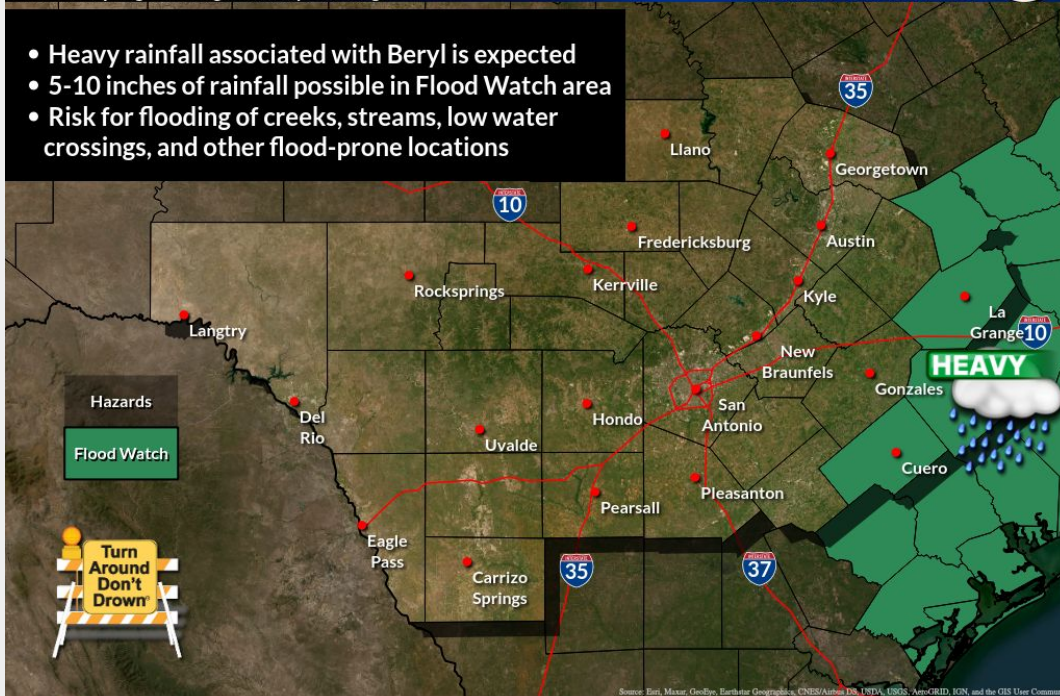
Flood Watch in Effect

Late Sunday Night through Tuesday Morning

Weather Forecast Office
Austin/San Antonio, TX
Issued Jul 06, 2024 2:18 PM CDT



- Heavy rainfall associated with Beryl is expected
- 5-10 inches of rainfall possible in Flood Watch area
- Risk for flooding of creeks, streams, low water crossings, and other flood-prone locations



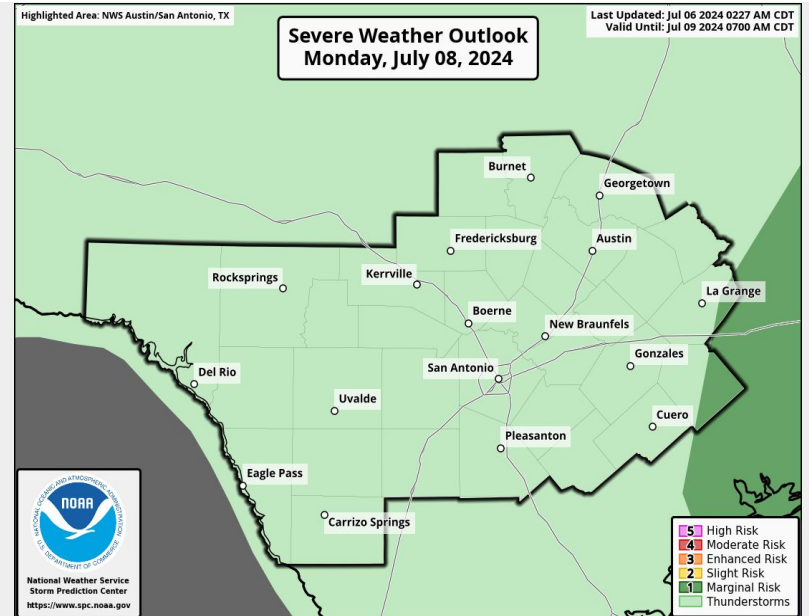
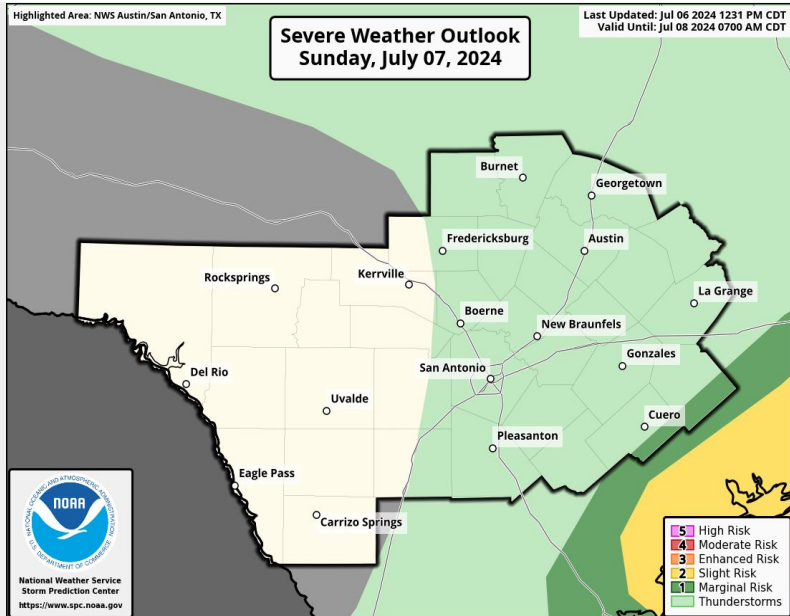
- Flood Watch has been issued from late Sunday night through Tuesday morning
- Adjustments (Time and Location) may occur to the Flood Watch as Beryl approaches



Tornado Potential

Tropical Storm Beryl

- Main threat of isolated tornadoes would be on Monday and mainly confined to rainbands associated with Beryl (far eastern areas)



Last updated: 7/6/2024 4:20 PM CDT

National Weather Service - Austin/San Antonio, TX

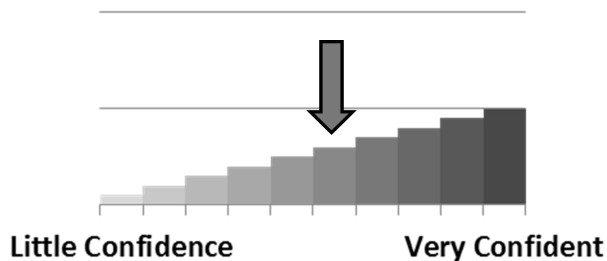


Key Takeaways

Tropical Storm Beryl

- The forecast track of Beryl has not shifted much over the past 24 hours...better confidence that the middle Texas coast will see landfall. This will put impacts over the far eastern areas of South Central Texas.
- Impacts to our far eastern areas could include 5-10 inches of rain, isolated tornadoes, gusty winds, and flooding. A Flood Watch has been issued for far eastern areas. A Tropical Storm Warning has been issued for DeWitt and Lavaca Counties.
- Areas along I-35 will not see significant effects based on the current forecast track.
- Continue to monitor the forecast of Beryl. Adjustments to Watches/Warnings may still be needed.

Forecast Confidence



Confidence is increasing as the forecast track of Beryl is becoming better defined and models are in better agreement on the track.



Local Resources

Tropical Storm Beryl

Next Briefing:
Sunday 11:00 AM CDT
Method: Webinar



Web: weather.gov/srh/tropical?office=ewx



Phone: 830-629-0130 X2



E-mail: sr-ewx.alert@noaa.gov



Facebook: [NWSSanAntonio](#)



Twitter: [NWSSanAntonio](#)



YouTube: [NWSSanAntonio](#)