

# March 2024 Weather Digest



# March 2024 Weather Summary

**This March was pretty typical of most March weather around the Borderland with plenty of wind storms and sparse precipitation. Most of the lowlands finished the month below normal with precipitation. Most of the mountains including Gila/Black Range, Sacramentos and the San Andres/Organs all received above normal precipitation. A strong Pacific storm system rolled through on the 7th through 9th, bringing heavy snow to the mountains. The Sacramento Mountains reported up to 10 inches of snow.**

**A more unusual feature moved in mid month in the shape of a Pacific upper low which became stationary for nearly a week over Arizona and kept our area in prolonged southwest flow and several wind storms. This pattern only resulted in some isolated showers and no significant rainfall. With the numerous storms passing through, average temperatures ended up near normal, with below normal high temperatures off-setting above normal low temperatures.**

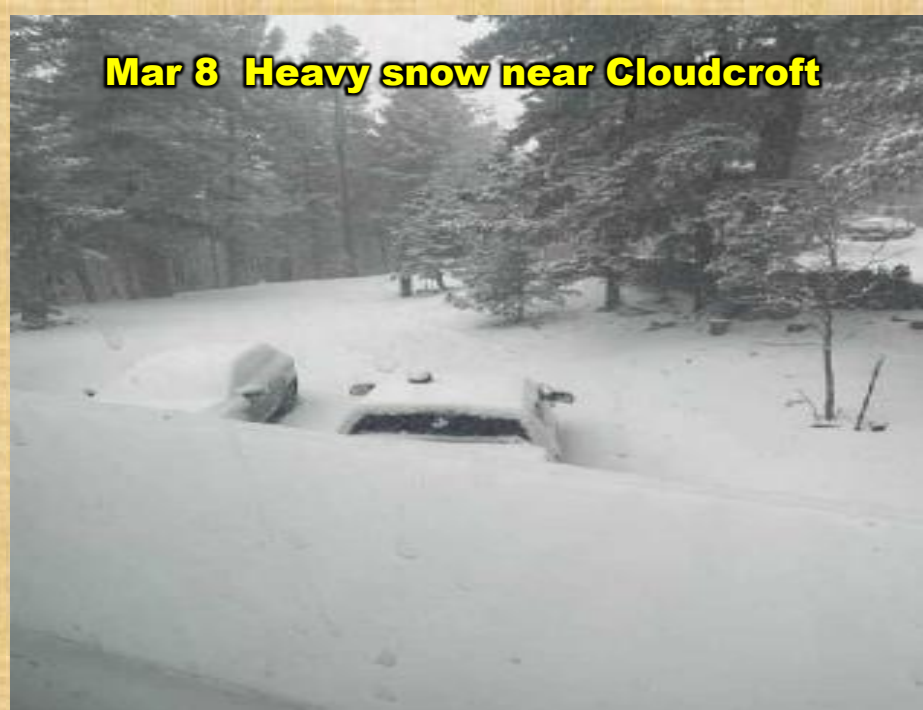
# March 2024 Weather Summary

Looking ahead to April we continue the steady warmup and lengthening daylight. April ends with 13 hours and 25 minutes of light, an increase of 53 minutes from the beginning of the month. High temperatures in El Paso warm from 77 degrees on the first, to 83 degrees on the 30th. As far as the celestial news goes, obviously the biggest news is the Solar Eclipse on April 8th. The percent of totality ranges from about 85% over west Texas, to 75% further west over the Gila Region. The April full moon occurs the 23rd and is known as the Pink Moon, while the new moon occurs on the 8th during the eclipse.

**Mar. 8 Heavy snow near Sixteen Springs**



**Mar 8 Heavy snow near Cloudcroft**



**Mar 9 Fog near Cloudcroft**



**Mar 9 Fog near Cloudcroft**



**Mar 9 Snow over the Gila Wilderness**



**Mar 10 Fog in the Mimbres Valley**



**Mar 26 Snow near Pinos Altos**



**Mar 26 Snow near Pinos Altos**



**Mar 26 Snow near Mimbres**



**Mar 26 Snow near Mimbres**



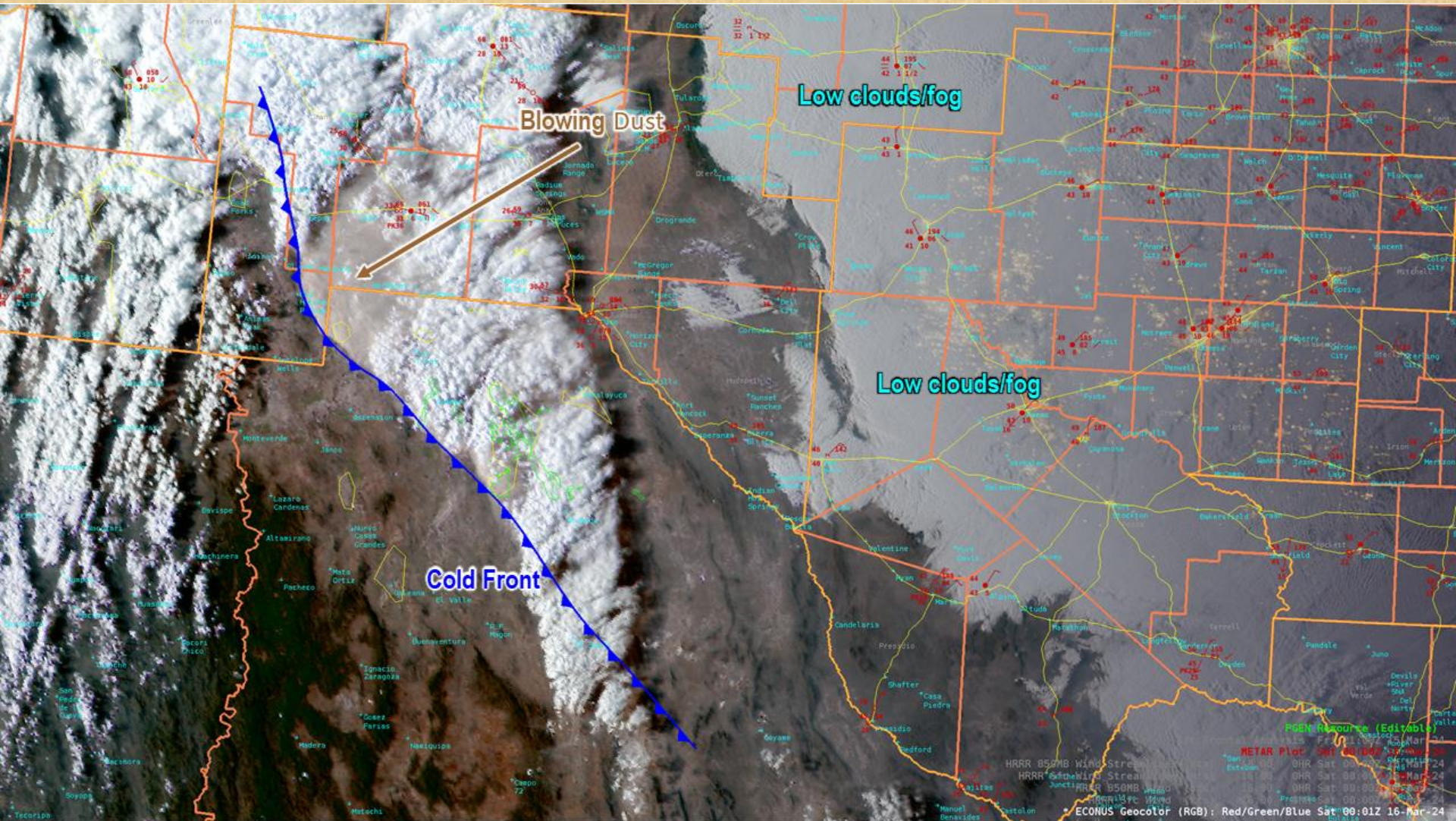
**Mar 26 Snow at Lake Roberts**



**Mar 26 Showers in the Gila**



# Mar 15 cold front brought low clouds and fog to the Sacramento Mountains and blowing dust to the southern desert.



# April 8 Solar Eclipse

**Borderland will be in 70-80% totality range,  
peaking at around 1230 pm**



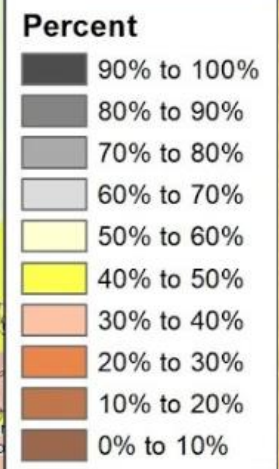


# April 8 Cloud Cover Climatology: All Years

**Average cloud cover 20-30%**



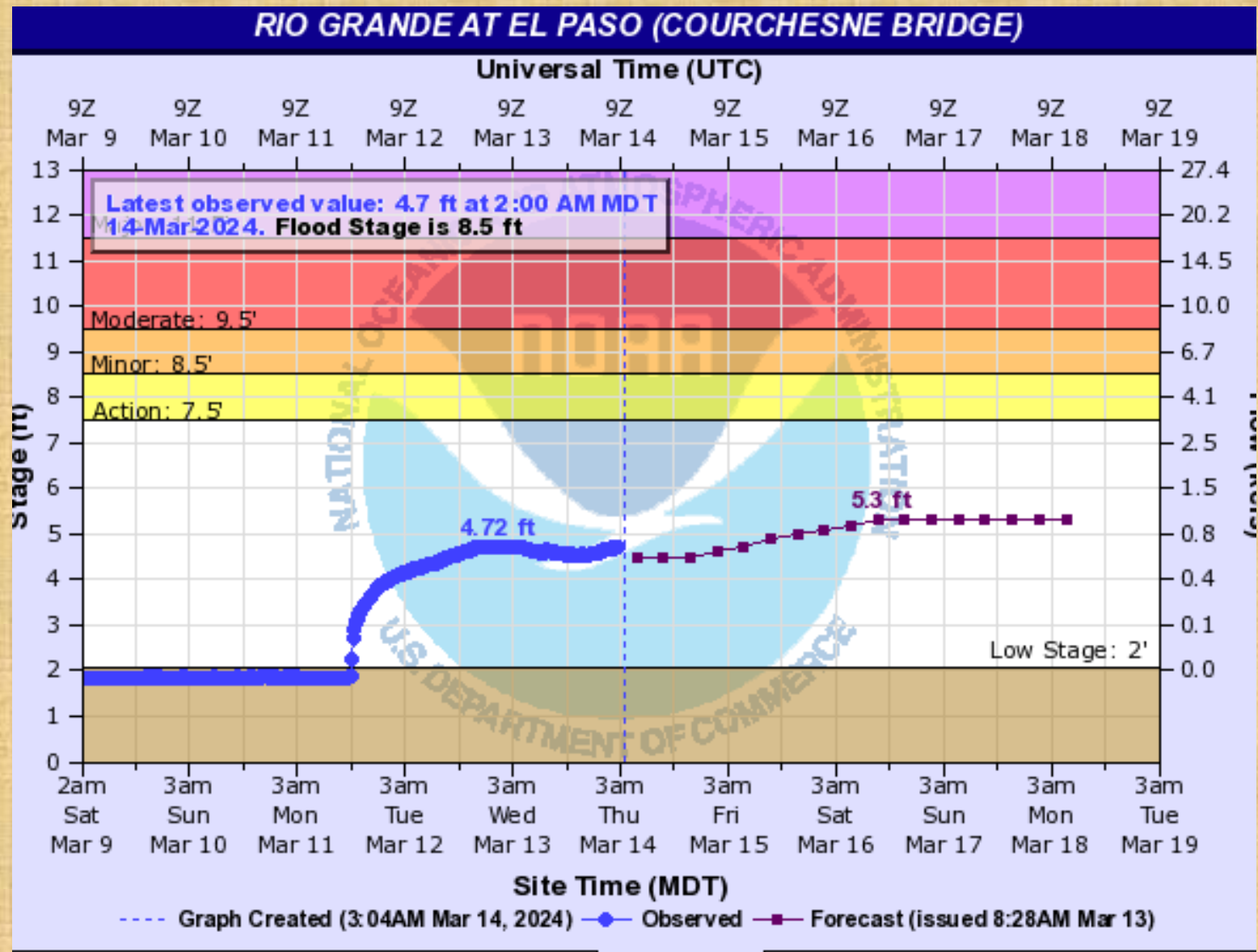
**April 8, 2024, Solar Eclipse Path of Totality**



Source: ERA5 Reanalysis  
April 1-15, 1979-2022  
Between 12:00 p.m. and  
4:00 p.m. CDT.  
Map by Brian Brettschneider

Sources: Esri, HERE, Garmin, USGS, Intermap, INCREMENT P, NRCan (Hong Kong), Esri Korea, Esri (Thailand), NGCC, (c) OpenStreetMap community

# Mar 10 – Water released from Elephant Butte Reservoir into the Rio Grande-reaches El Paso Mar 11



**ENSO Alert System Status:**  
**El Niño Advisory is in effect/**  
**La Niña Watch is also in effect**

**ENSO Alert System**

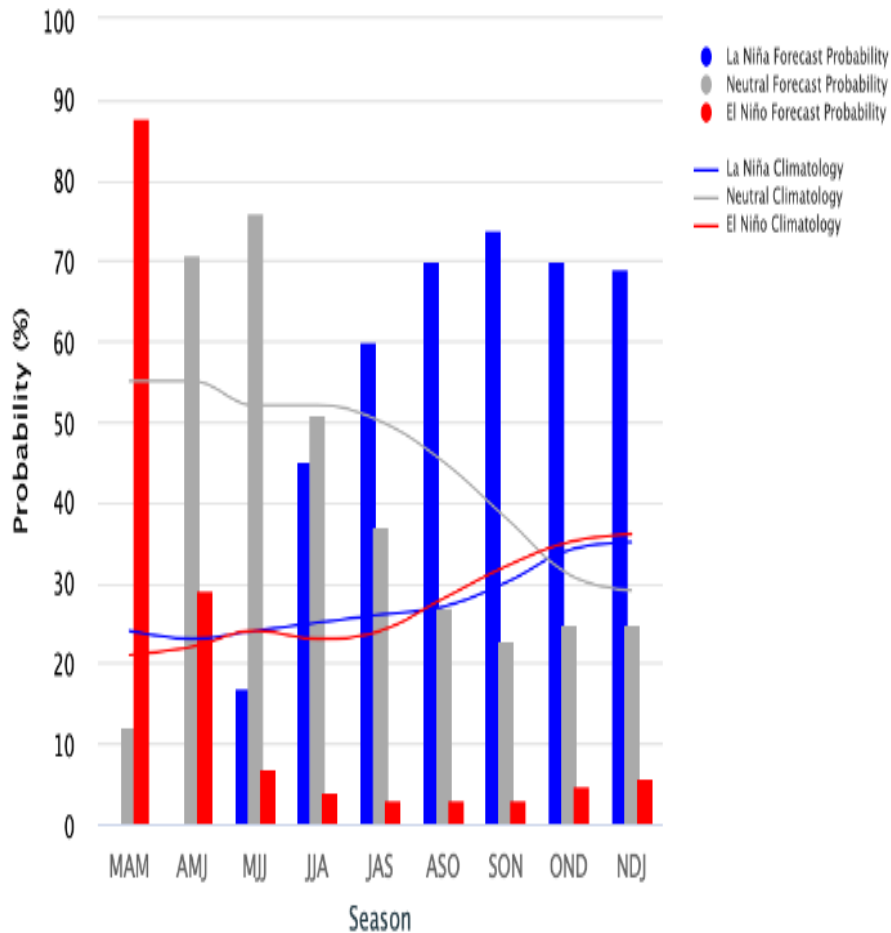
- **El Niño or La Niña Watch:** Issued when conditions are favorable for the development of El Niño or La Niña conditions in the next six months.
- **El Niño or La Niña Advisory:** Issued when El Niño or La Niña conditions are observed and expected to continue.

# ENSO Forecast

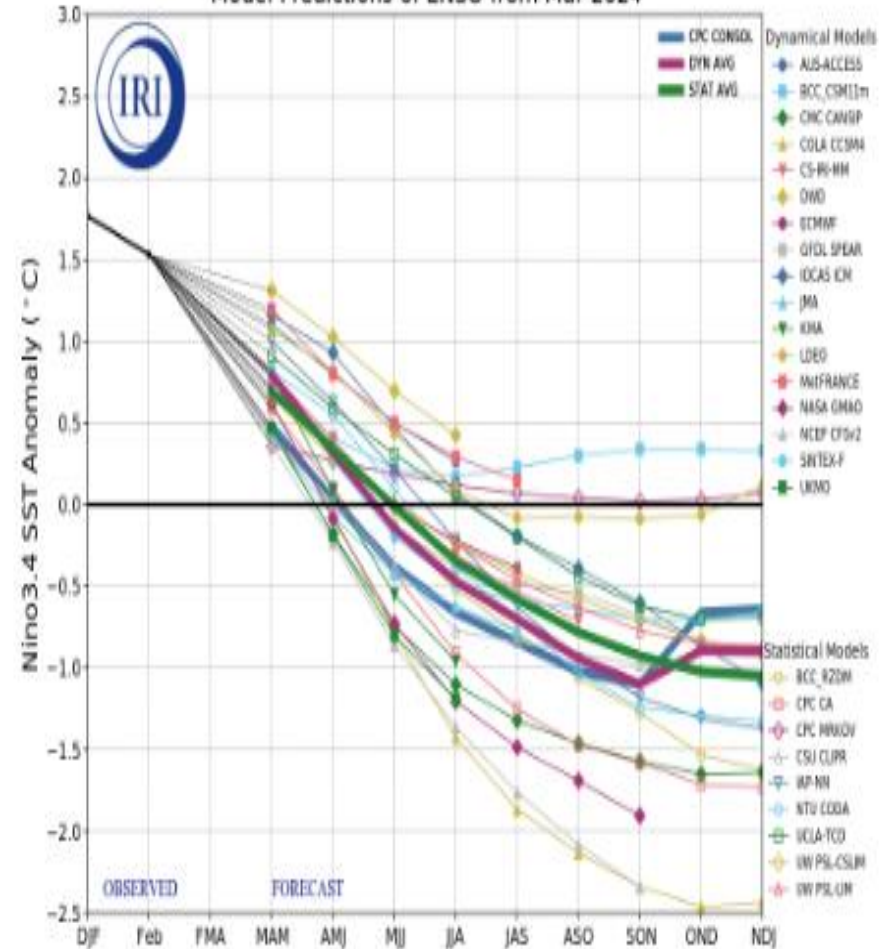
**ENSO is in El Niño phase and is expected to last into spring before transitioning to neutral by the beginning of this summer; likely back to La Niña by the end of summer.**

Mid-March 2024 IRI Model-Based Probabilistic ENSO Forecasts

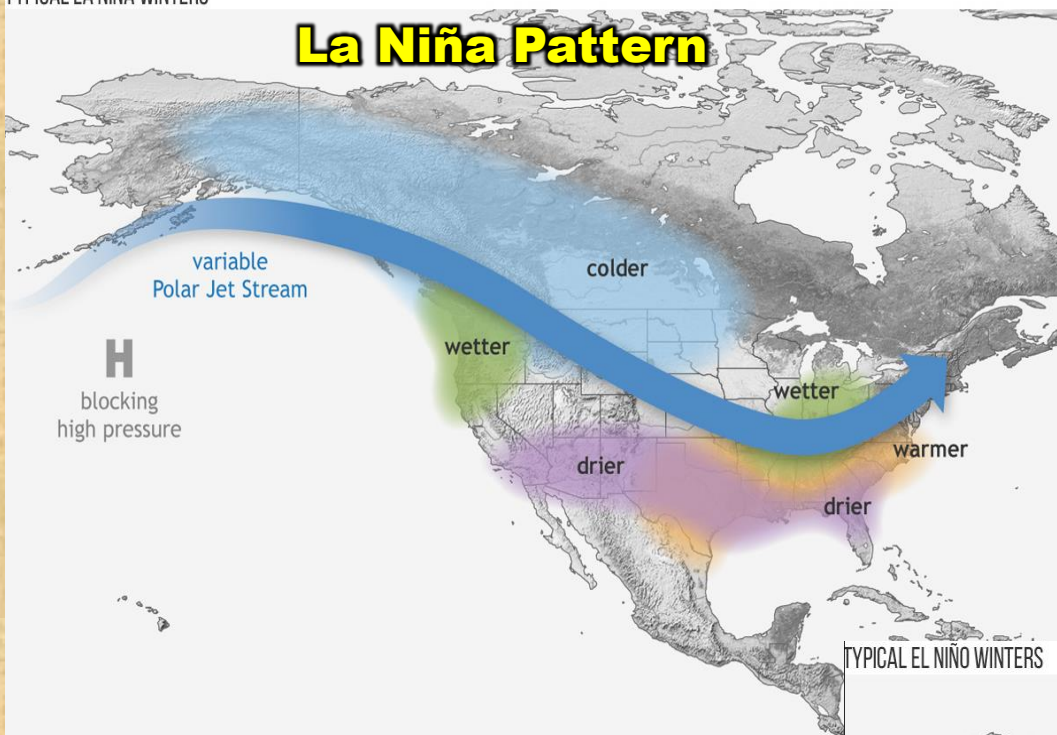
ENSO state based on NINO3.4 SST Anomaly Neutral ENSO:  $-0.5^{\circ}\text{C}$  to  $0.5^{\circ}\text{C}$



Model Predictions of ENSO from Mar 2024

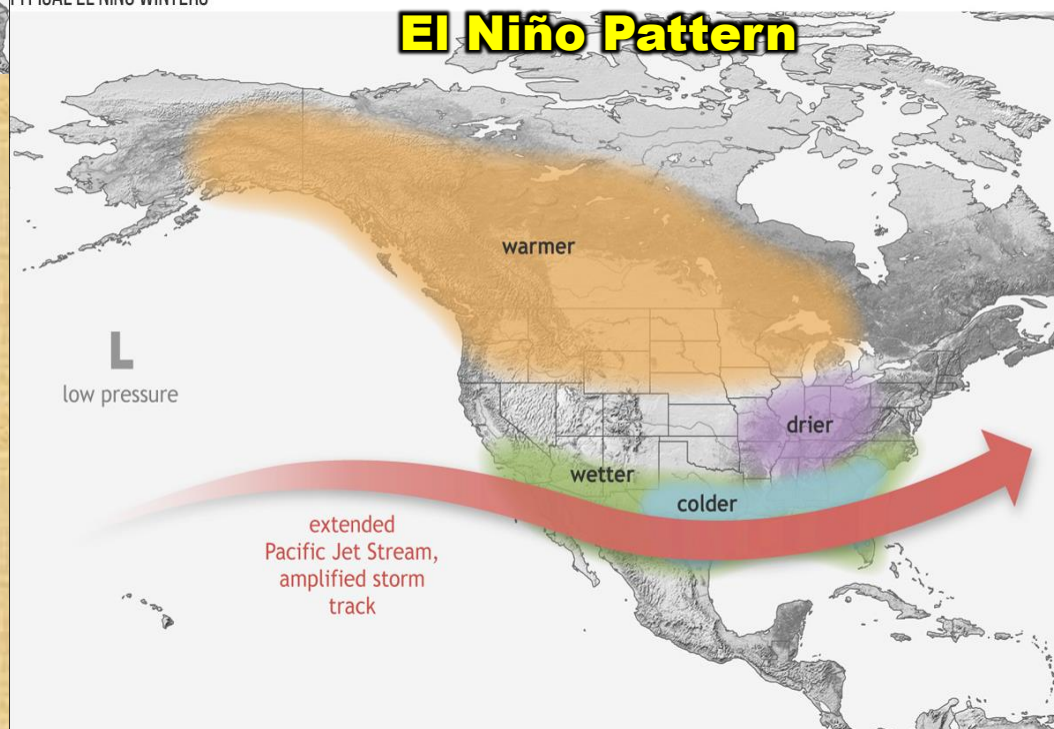


# La Niña Pattern



With a La Niña pattern, a ridge of high pressure tends to build off the west coast of the U.S., blocking most of our Pacific winter storm systems. These storms tend to end up moving across the northern Plains and down to the southeastern part of the country. Of course it is important to remember that these patterns are only what typically happens and are not guaranteed to occur.

# El Niño Pattern

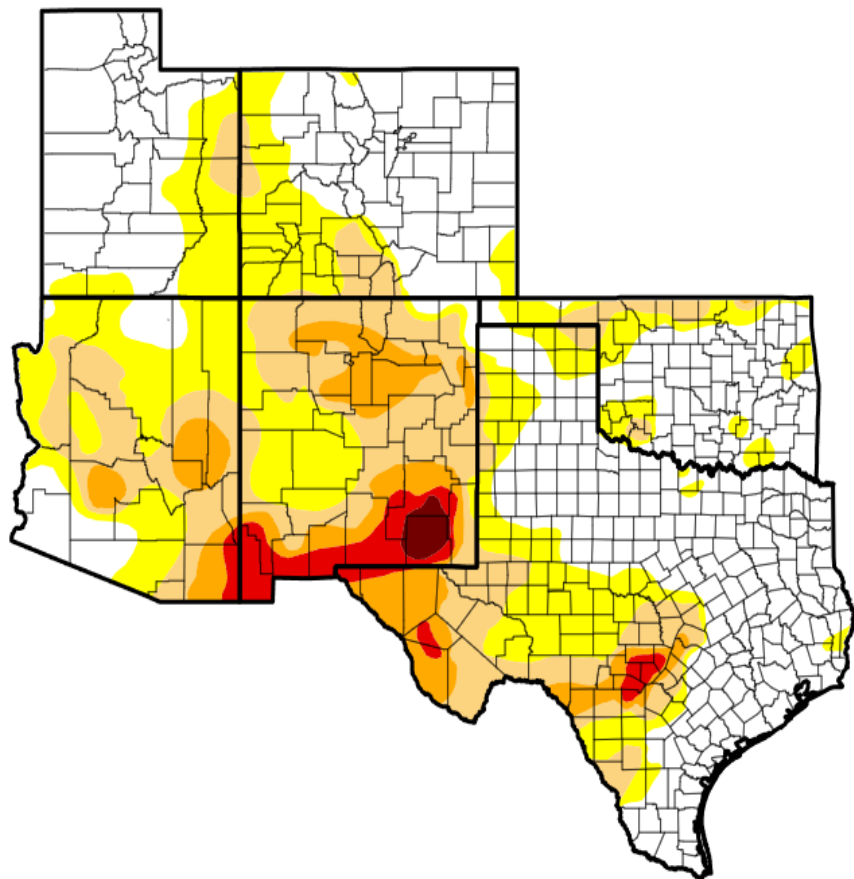


With El Niño, we often see the opposite pattern where the eastern Pacific ridge of high pressure is often weak or non-existent, allowing winter storms to sweep across the southern U.S. This typically will give the southwestern U.S. above normal precipitation.

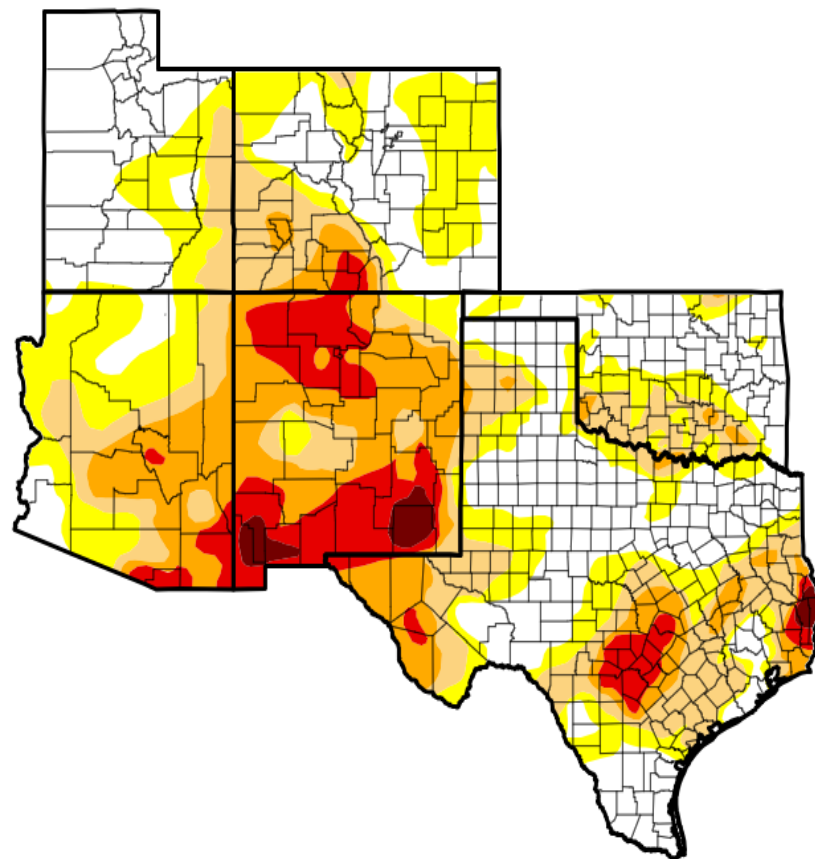
# Current drought conditions and 3 month change

- Abnormally Dry – D0
- Moderate Drought – D1
- Severe Drought – D2
- Extreme Drought – D3
- Exceptional – D4

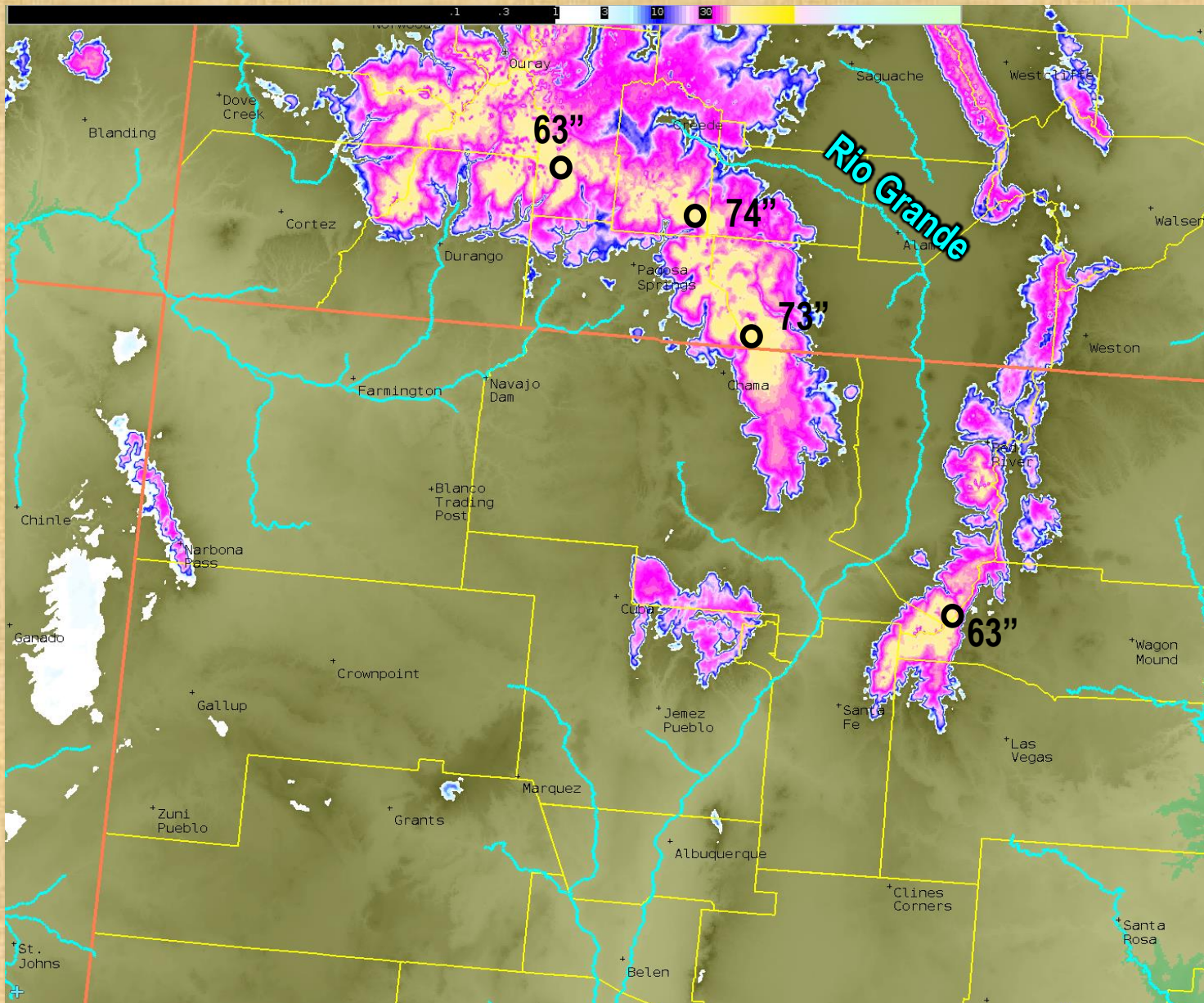
**Mar 26, 2024**



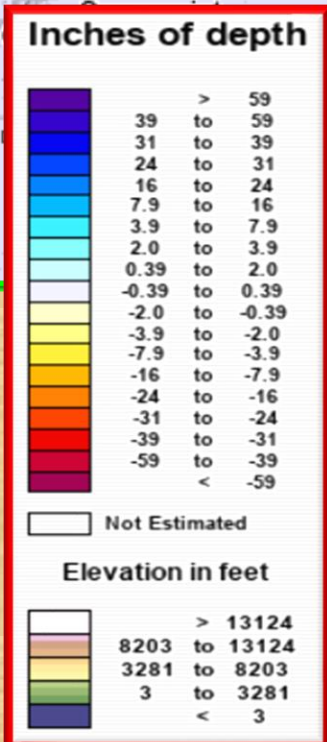
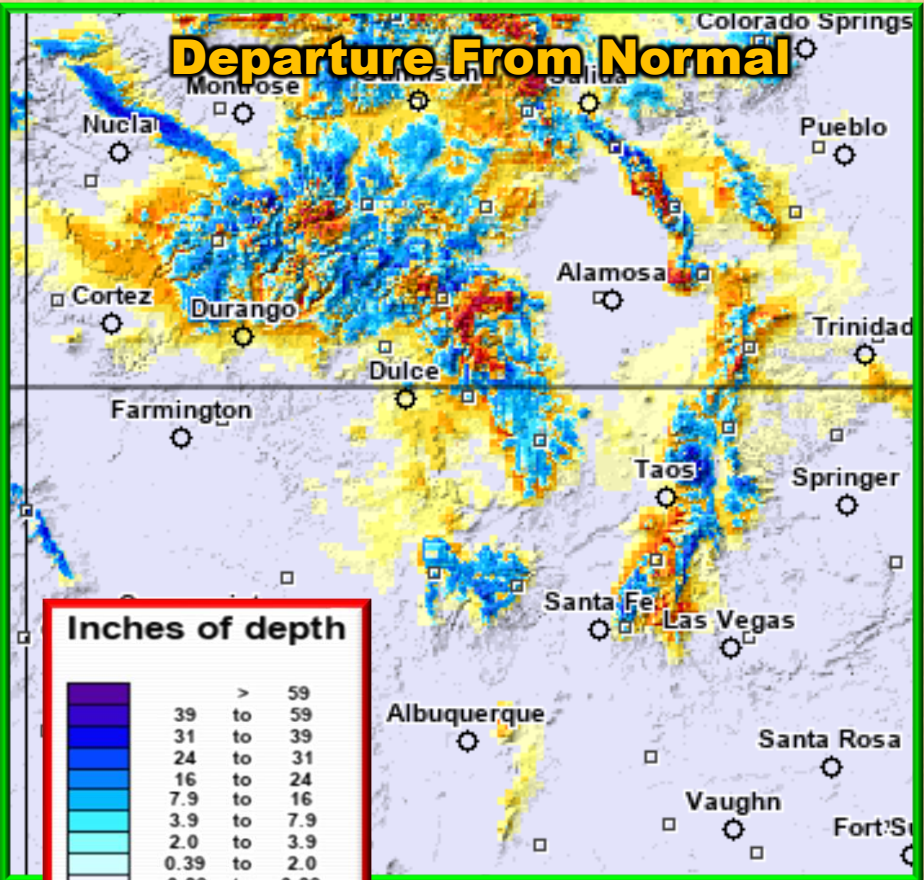
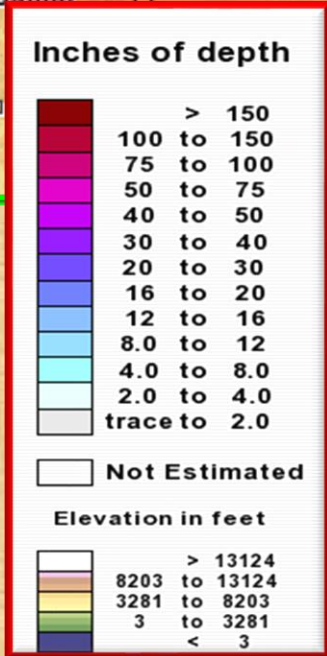
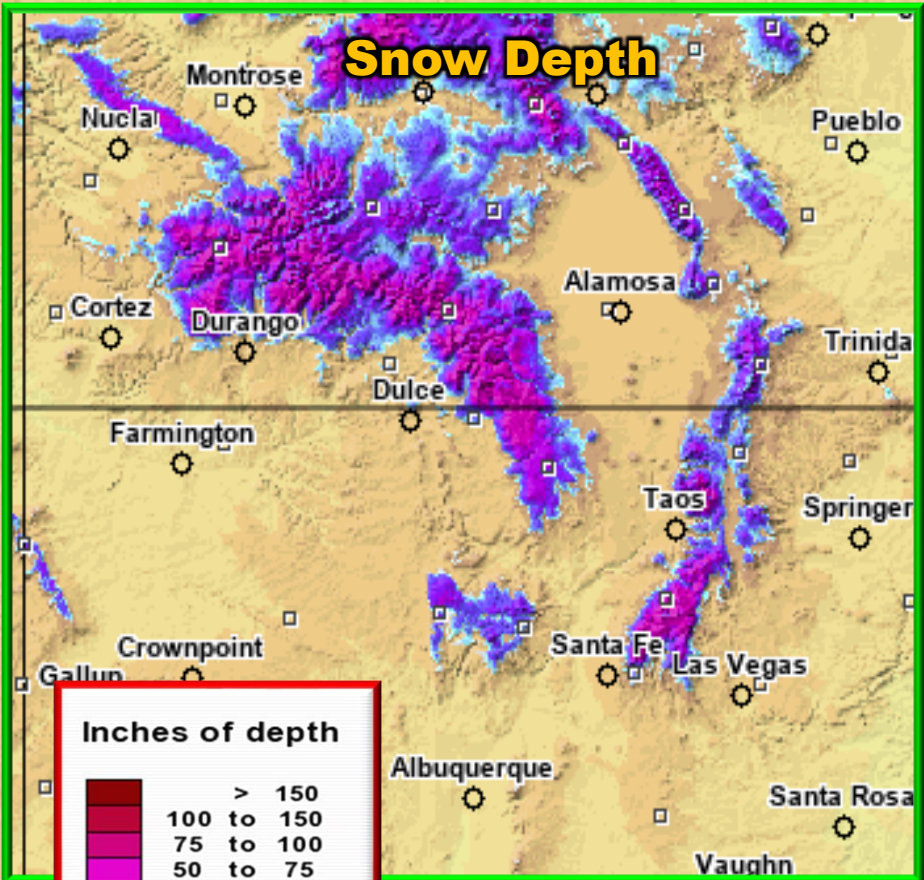
**Dec 26, 2023**



# March 31 Snow Depth Upper Rio Grande Basin



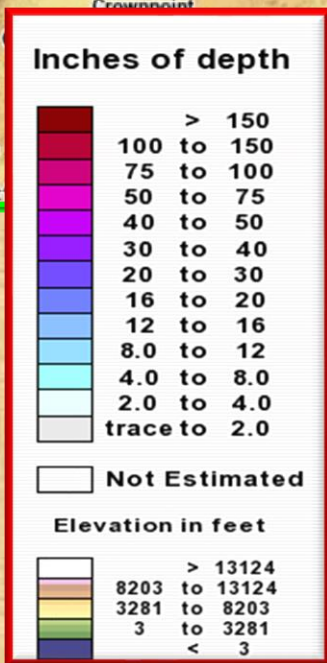
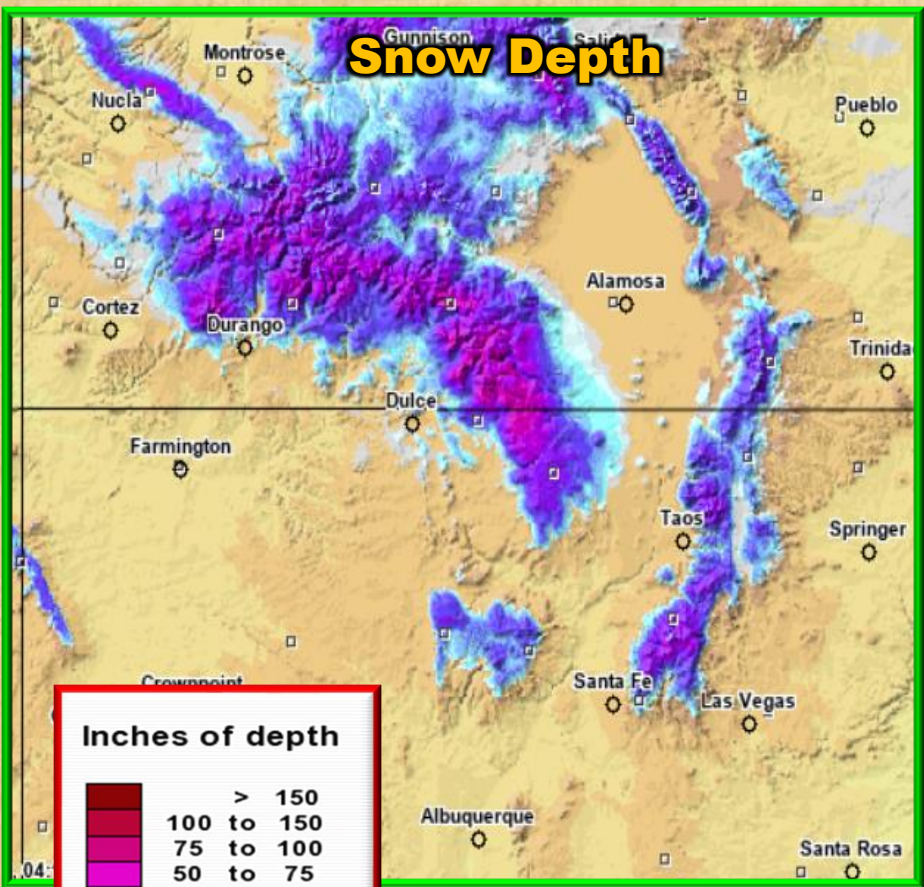
# Snow Data Upper Rio Grande Basin as of Mar 31, 2024



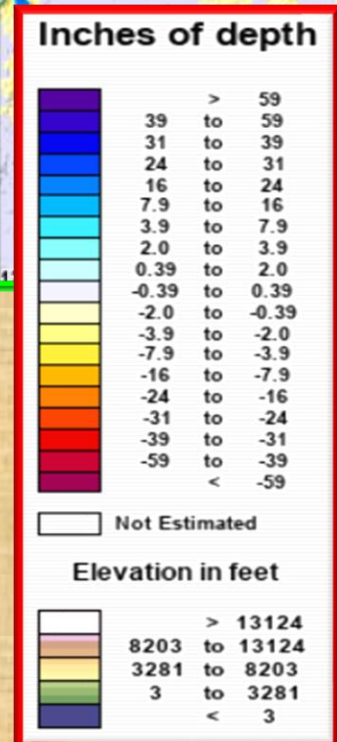
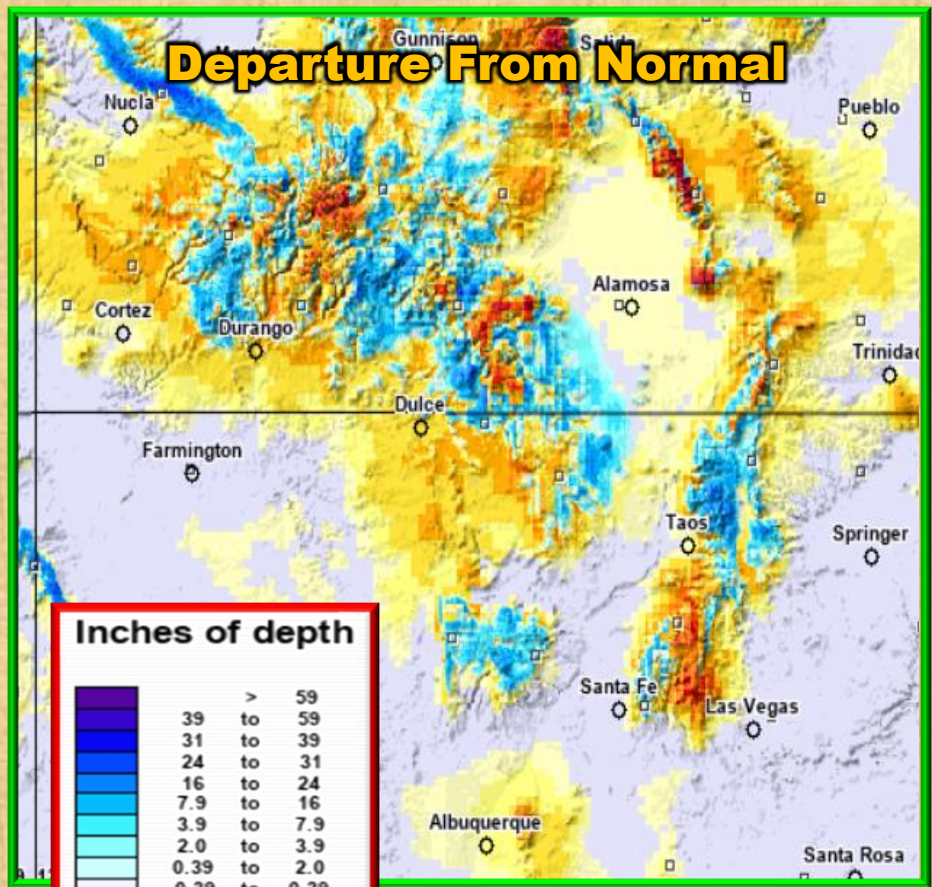


# Snow Data Upper Rio Grande Basin as of February 29, 2024

## Snow Depth

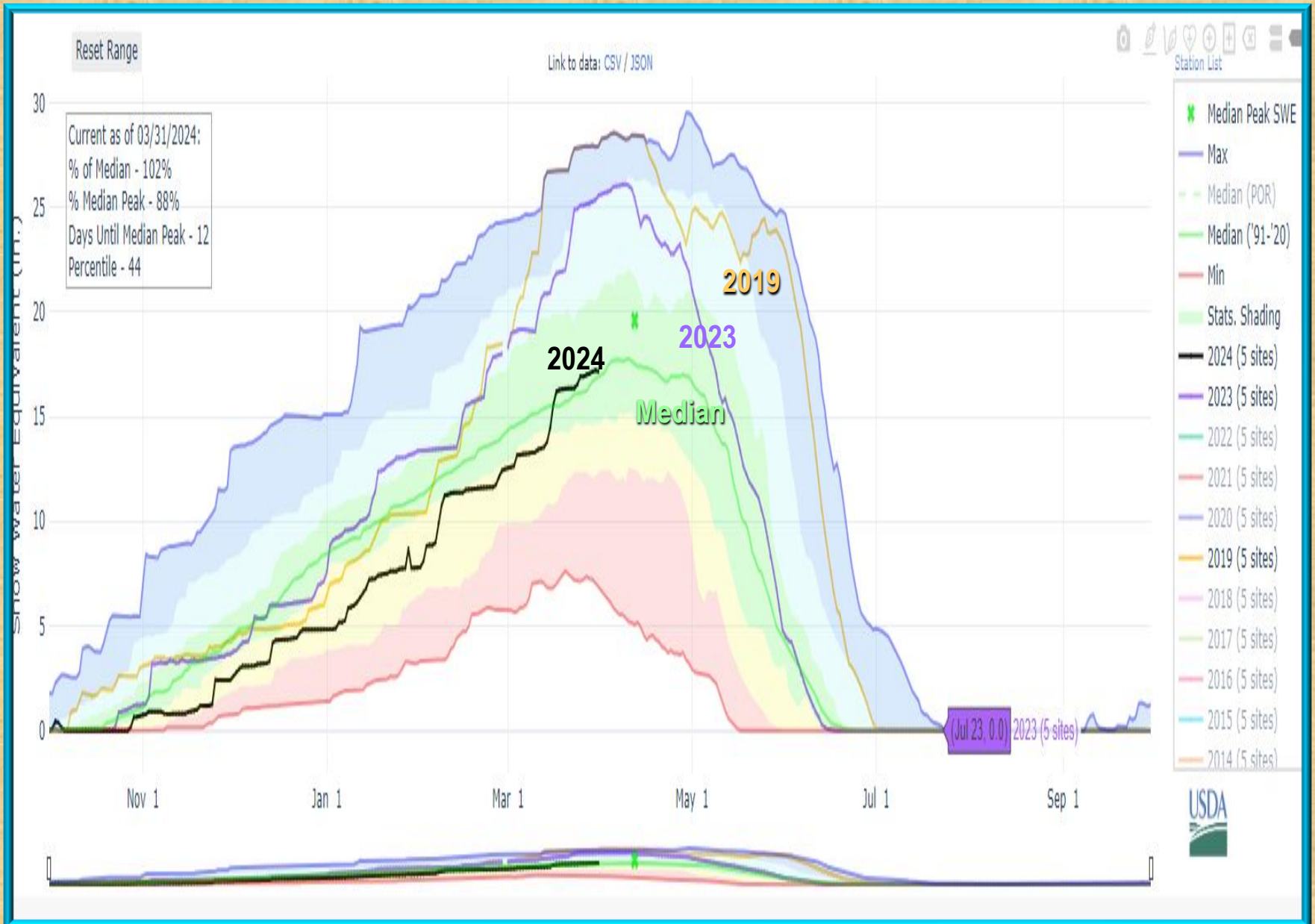


## Departure From Normal



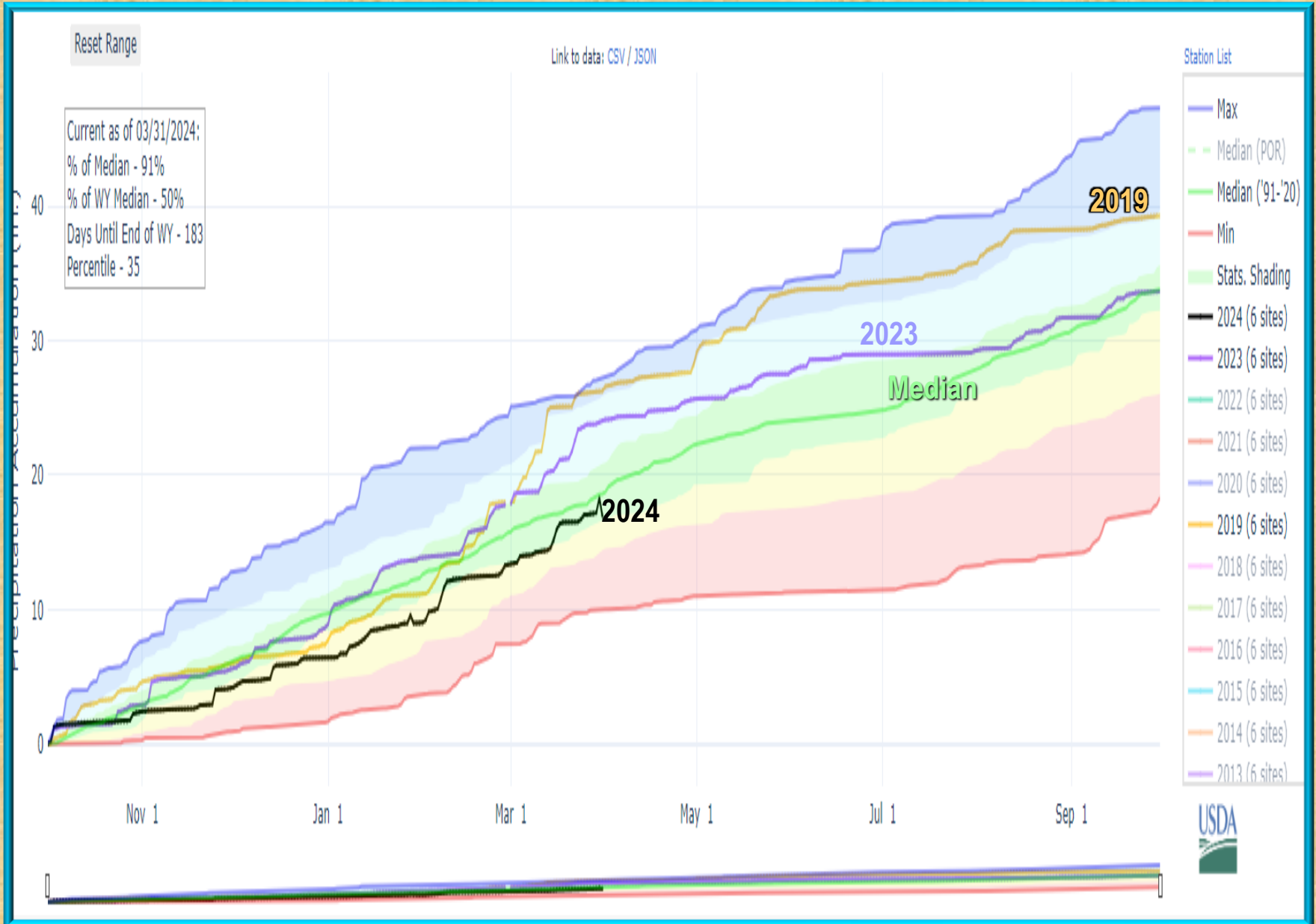
# Snow Water Equivalent as of March 31, 2024

## Compare to last few years and average values



# Precipitation for the Water Year Oct 1 – Mar 31, 2024

## Compare to last few years and average values

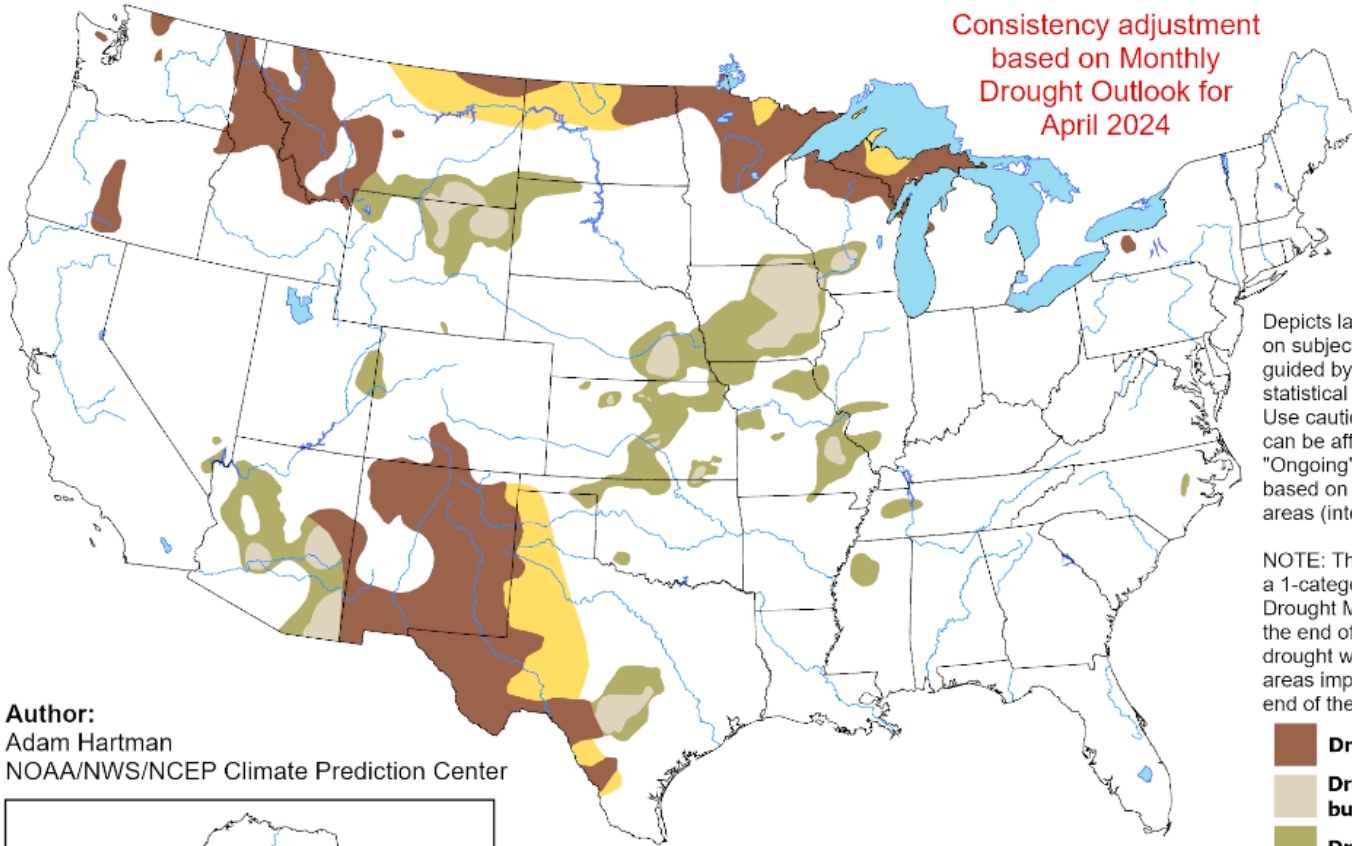


# U.S. Seasonal Drought Outlook

## Drought Tendency During the Valid Period

Valid for April 1 - June 30, 2024  
Released March 31, 2024

Consistency adjustment  
based on Monthly  
Drought Outlook for  
April 2024

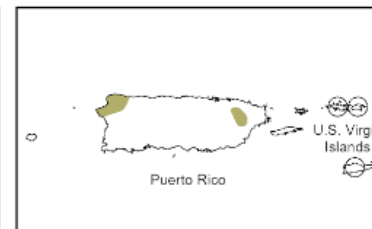
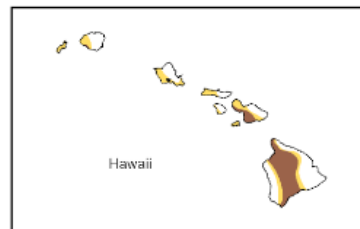


Depicts large-scale trends based on subjectively derived probabilities guided by short- and long-range statistical and dynamical forecasts. Use caution for applications that can be affected by short lived events. "Ongoing" drought areas are based on the U.S. Drought Monitor areas (intensities of D1 to D4).

NOTE: The tan areas imply at least a 1-category improvement in the Drought Monitor intensity levels by the end of the period, although drought will remain. The green areas imply drought removal by the end of the period (D0 or none).

- Drought persists**
- Drought remains, but improves**
- Drought removal likely**
- Drought development likely**
- No drought**

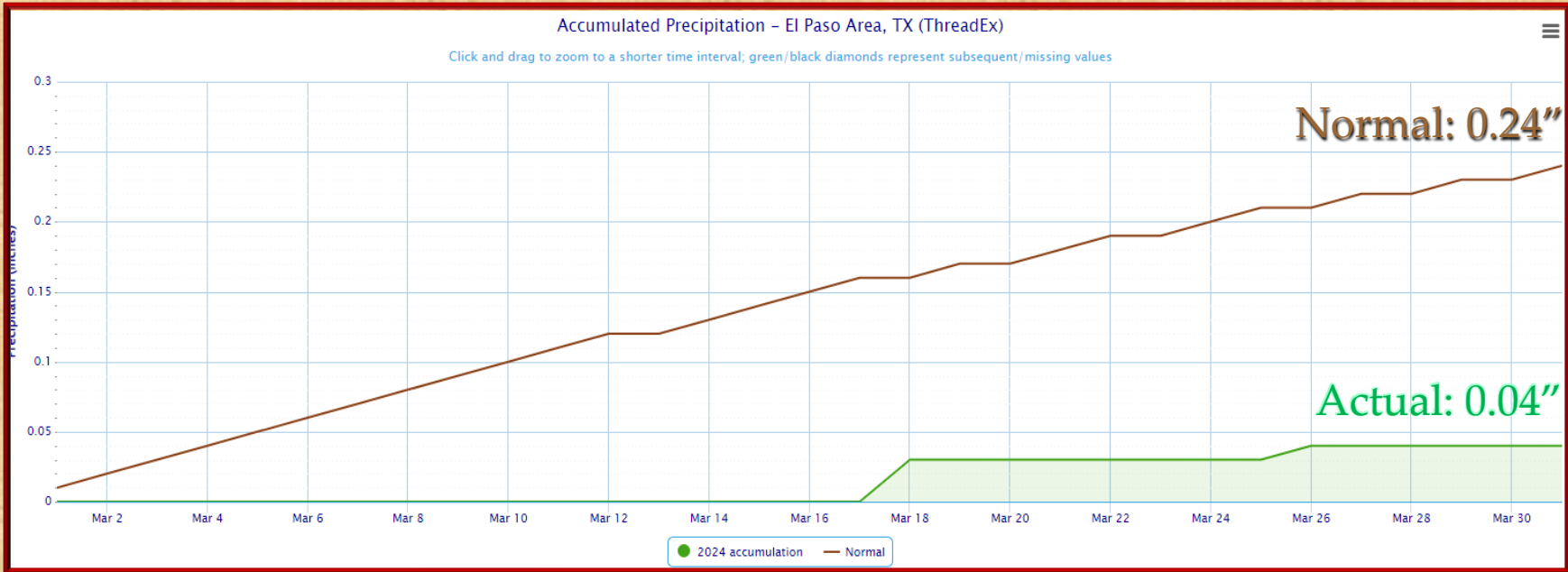
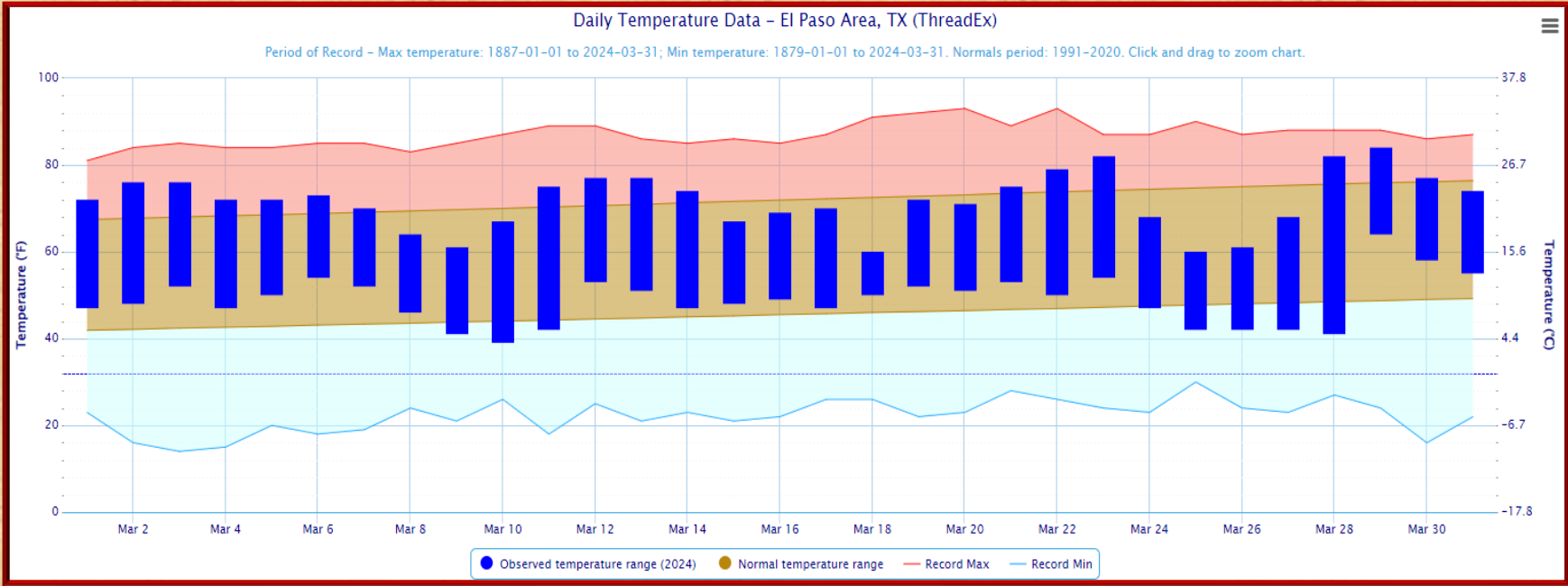
**Author:**  
Adam Hartman  
NOAA/NWS/NCEP Climate Prediction Center



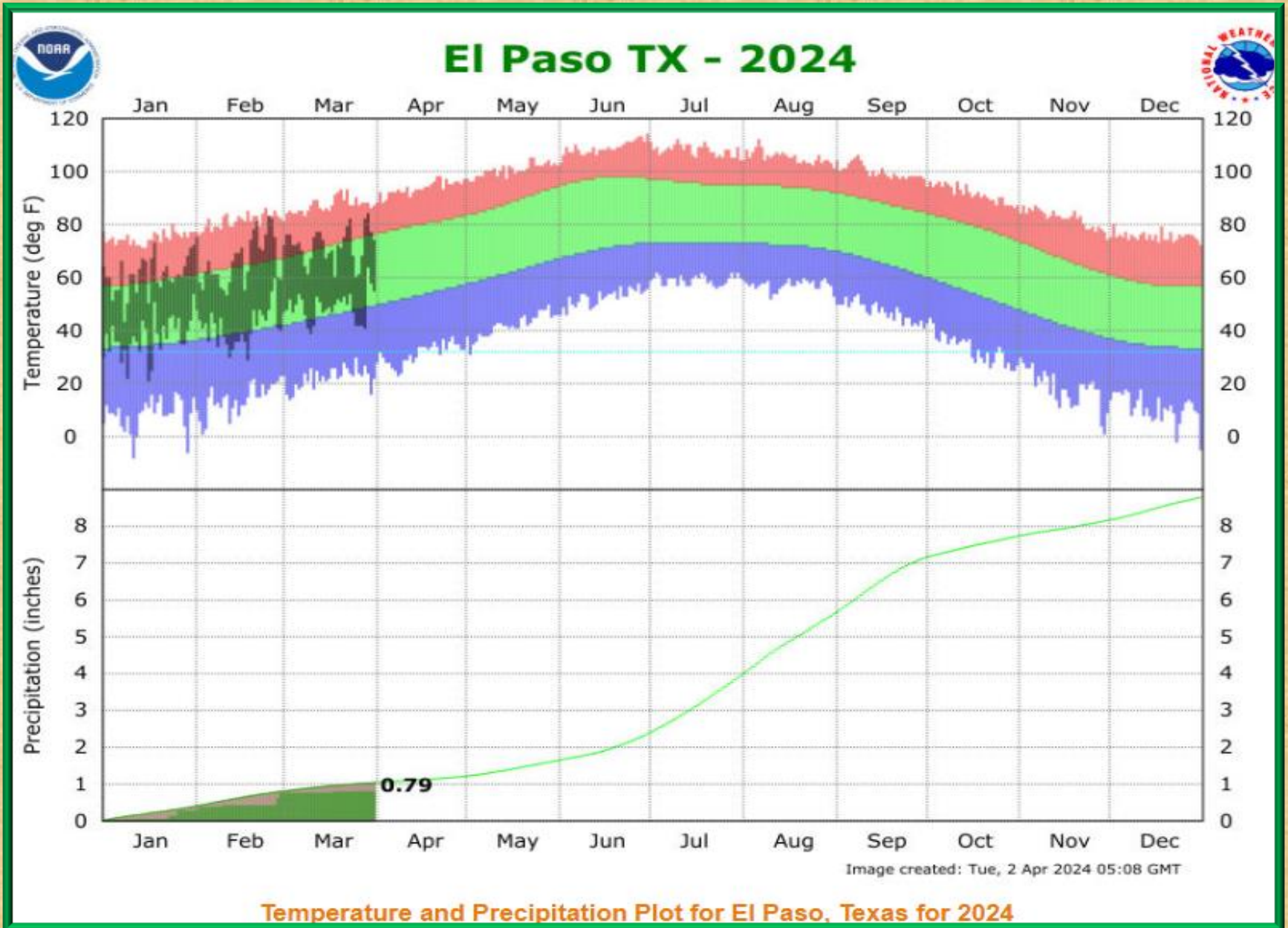
<https://go.usa.gov/3eZ73>

# Temperature and precipitation data for March 2024 in El Paso

○ = record

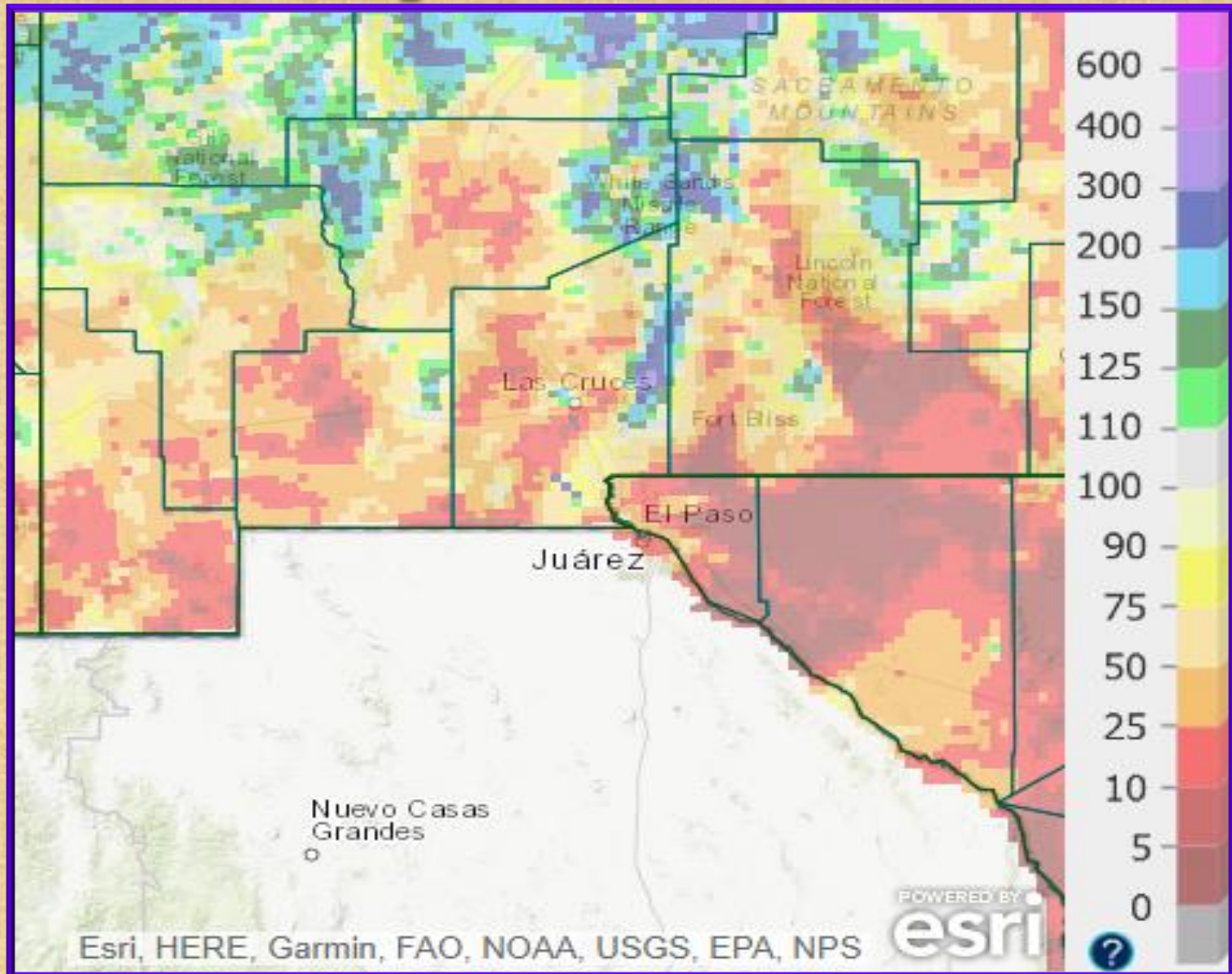


# Temperature and Precipitation Year-to-date for 2024 for El Paso



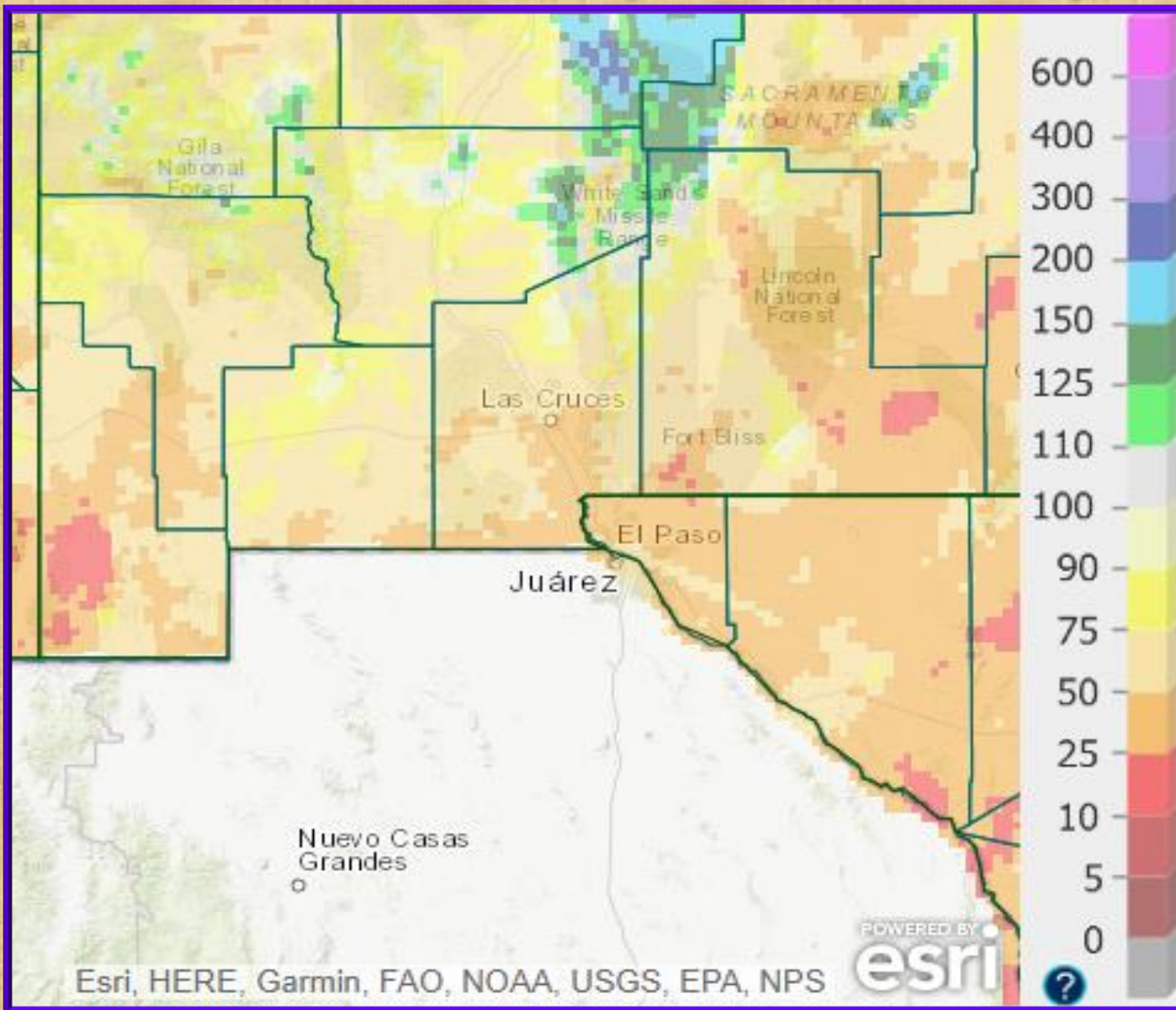


# March 2024 rainfall estimate percent of normal





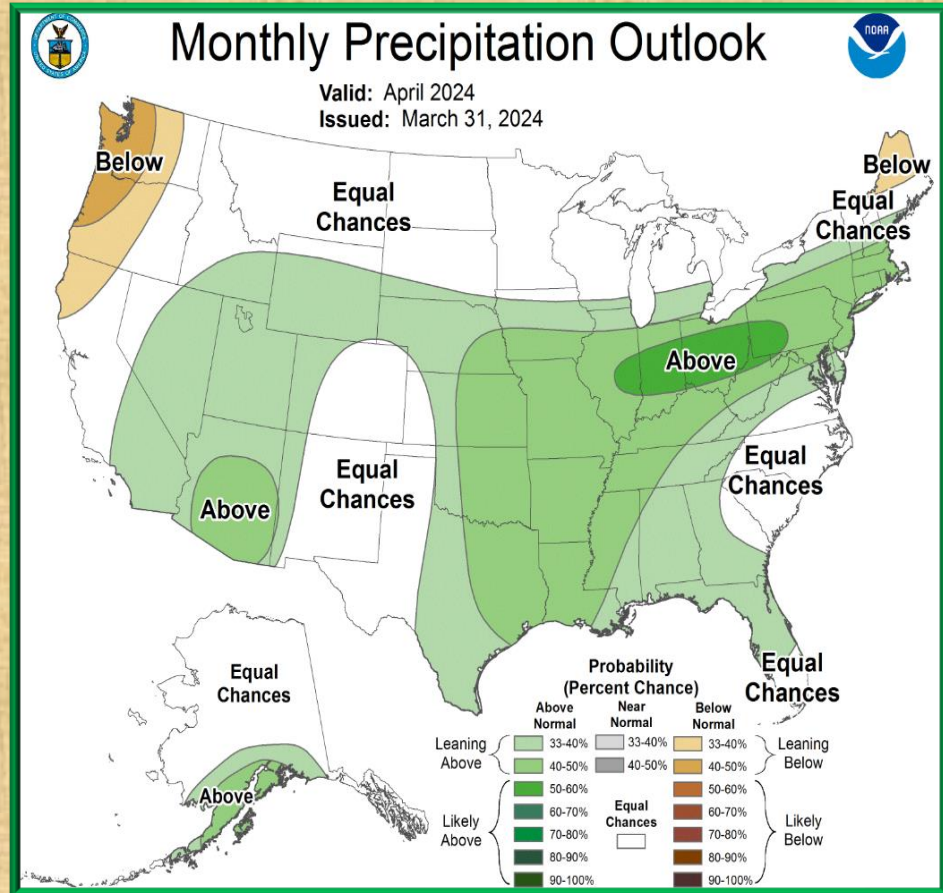
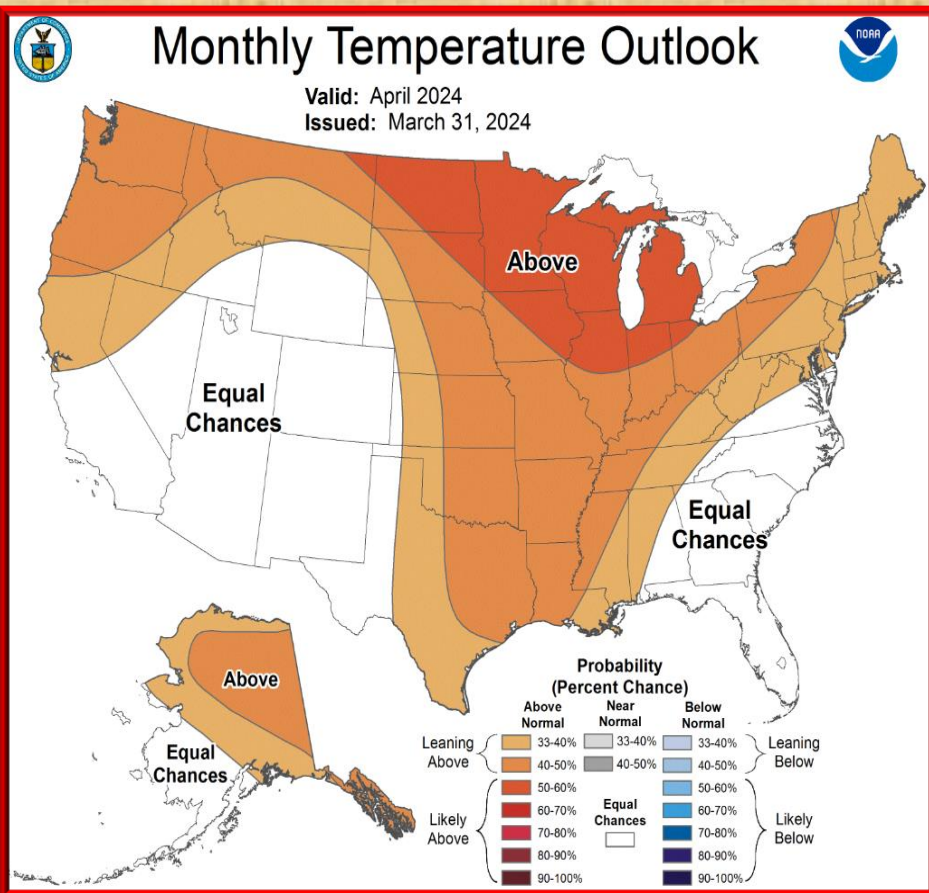
# Radar rainfall estimate percent of normal for the Water Year (Oct 1 – Mar 31)



# Temperature and precipitation outlook For April 2024

## Temperature

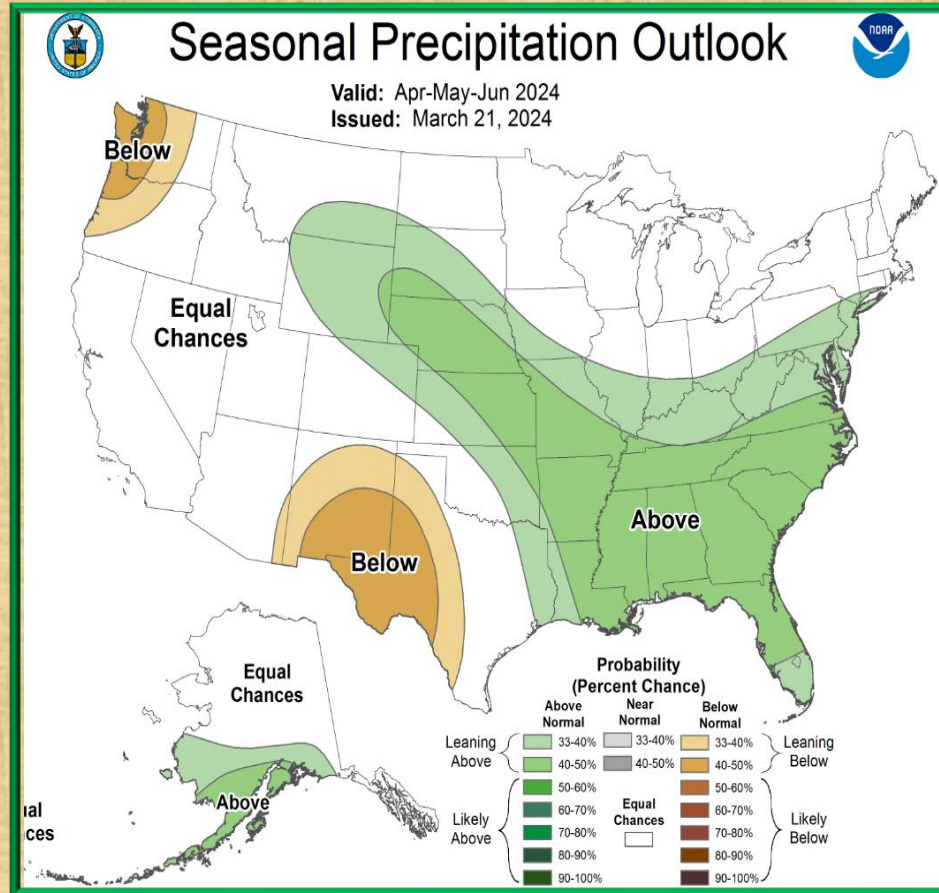
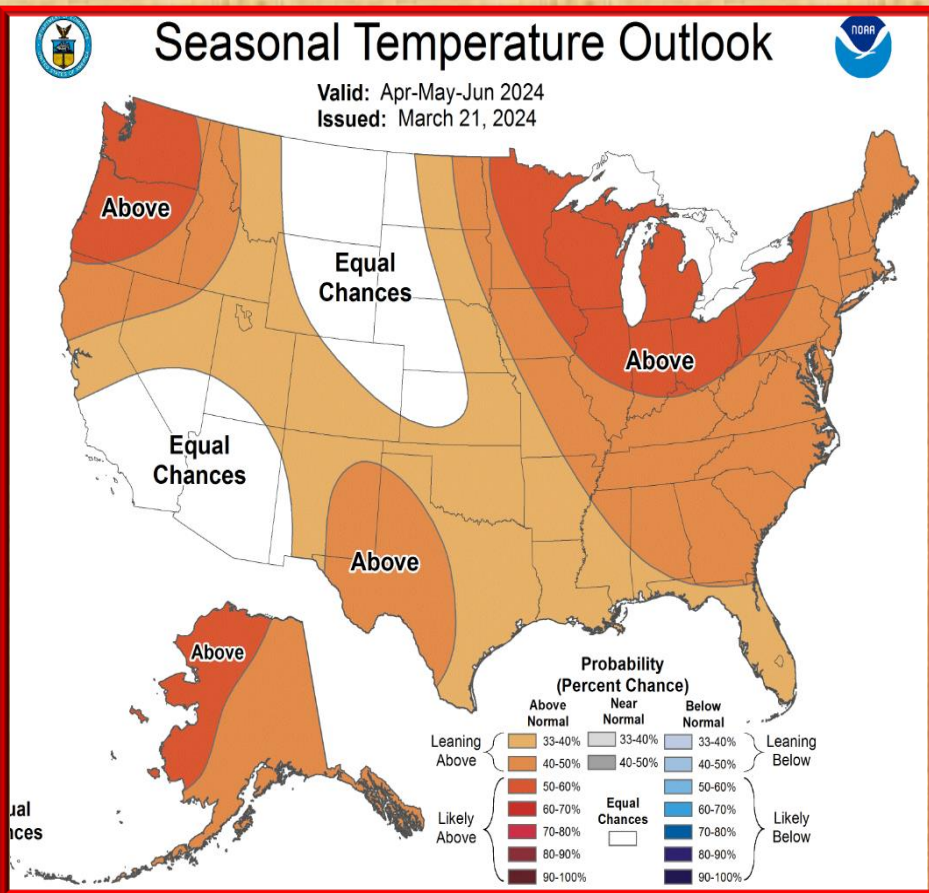
## Precipitation



# Temperature and precipitation outlook for Apr-Jun 2024

## Temperature

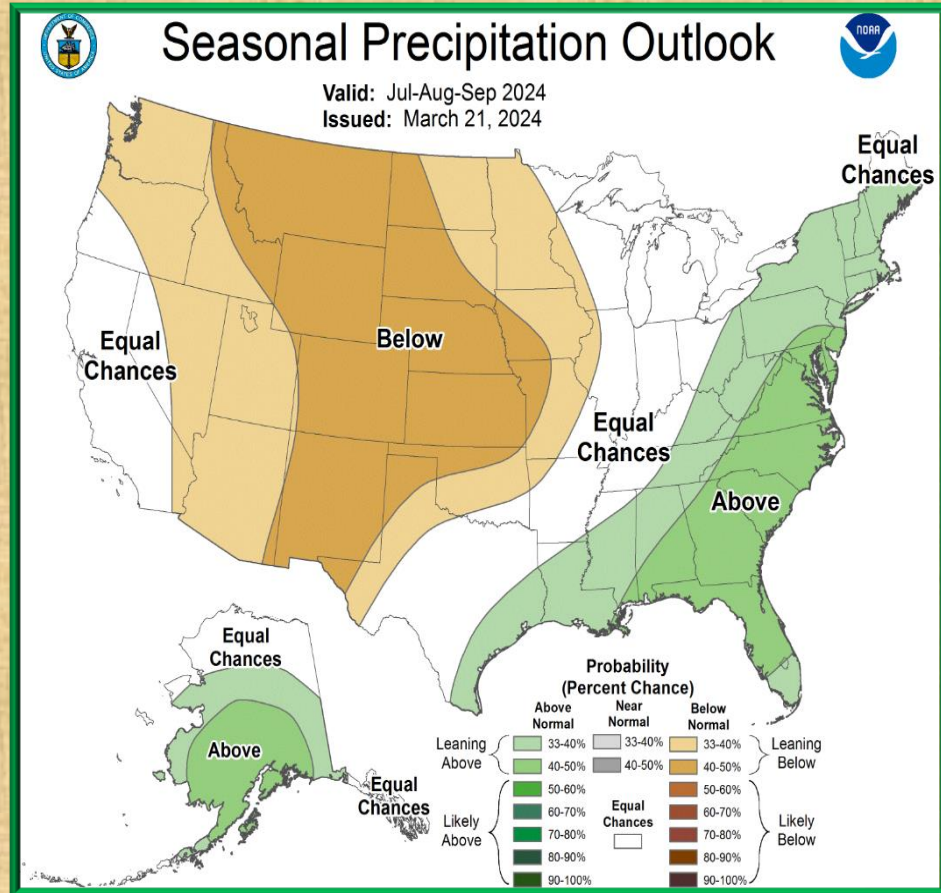
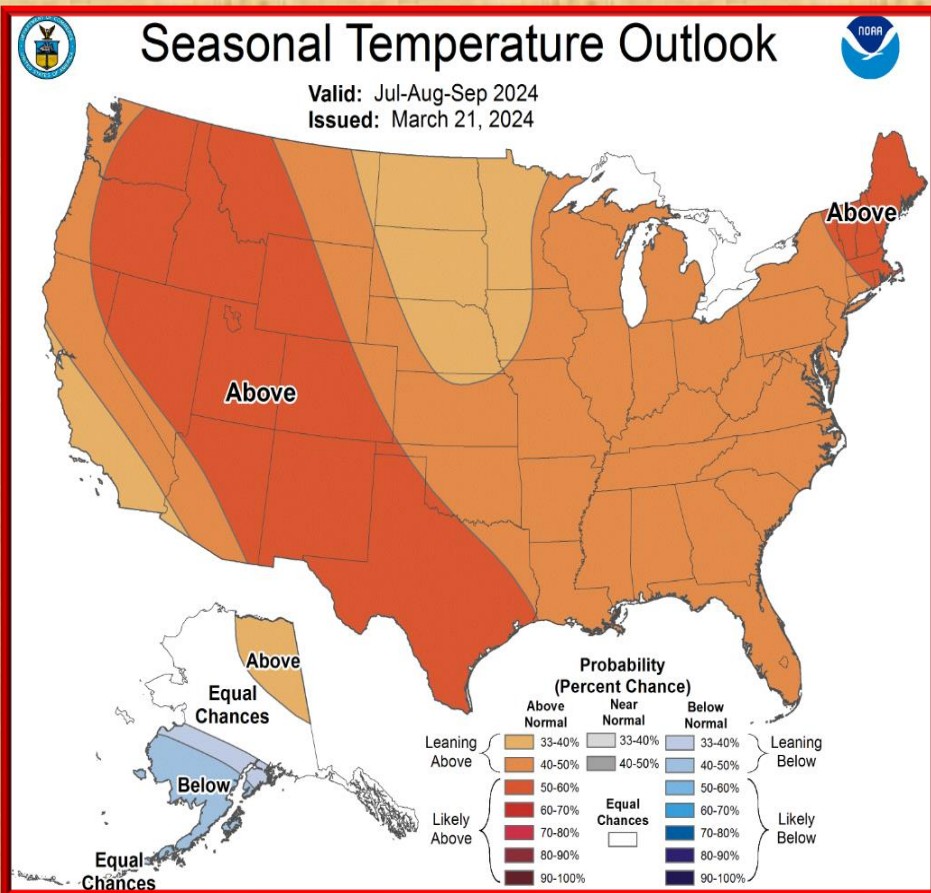
## Precipitation



# Temperature and precipitation outlook for Jul-Sep 2024

## Temperature

## Precipitation

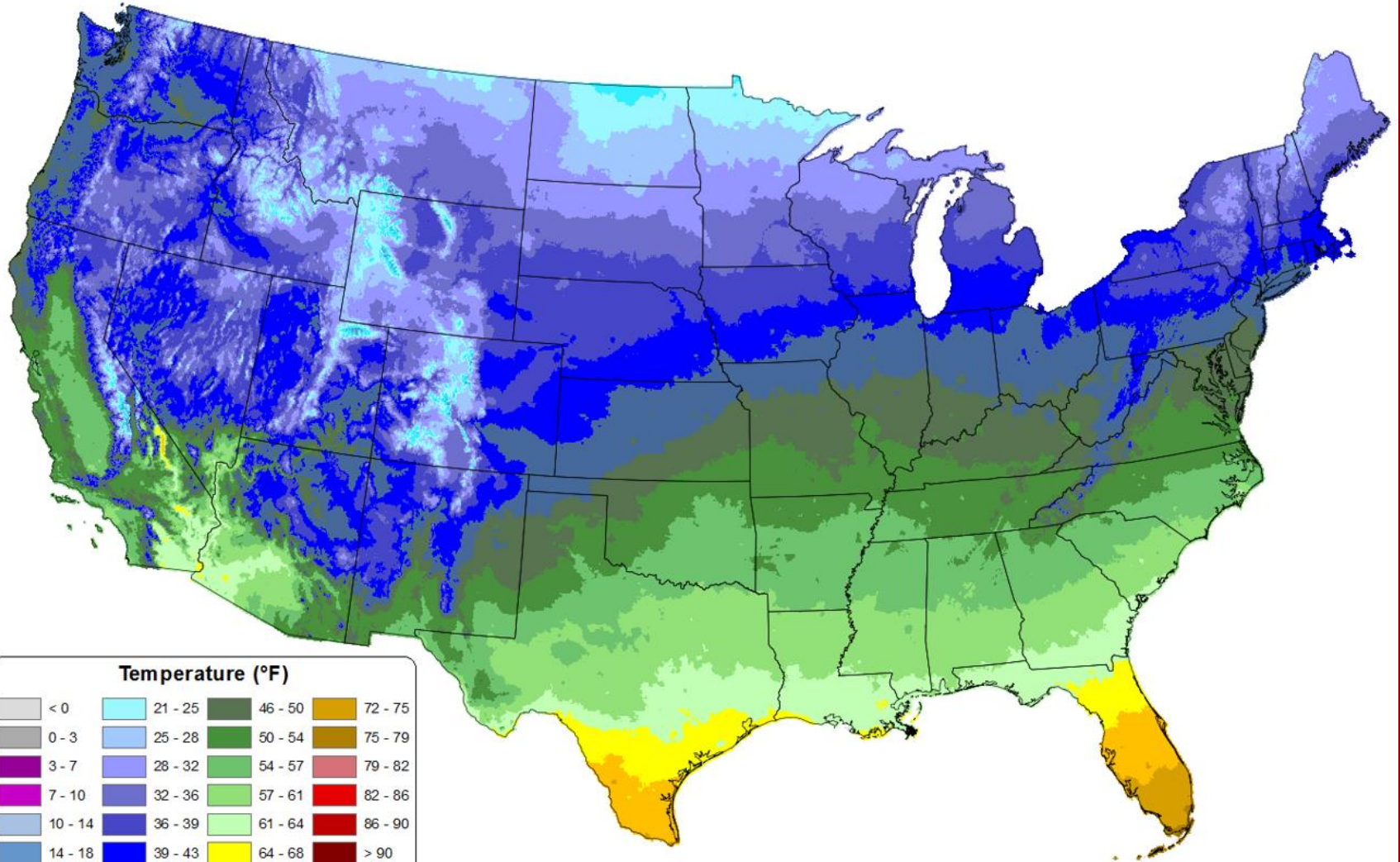


# Average Daily Mean Temperature for March 2024

Average Daily Mean Temperature: 01 Mar 2024 - 31 Mar 2024

Period ending 7 AM EST 31 Mar 2024

(Map created 01 Apr 2024)



## Temperature (°F)

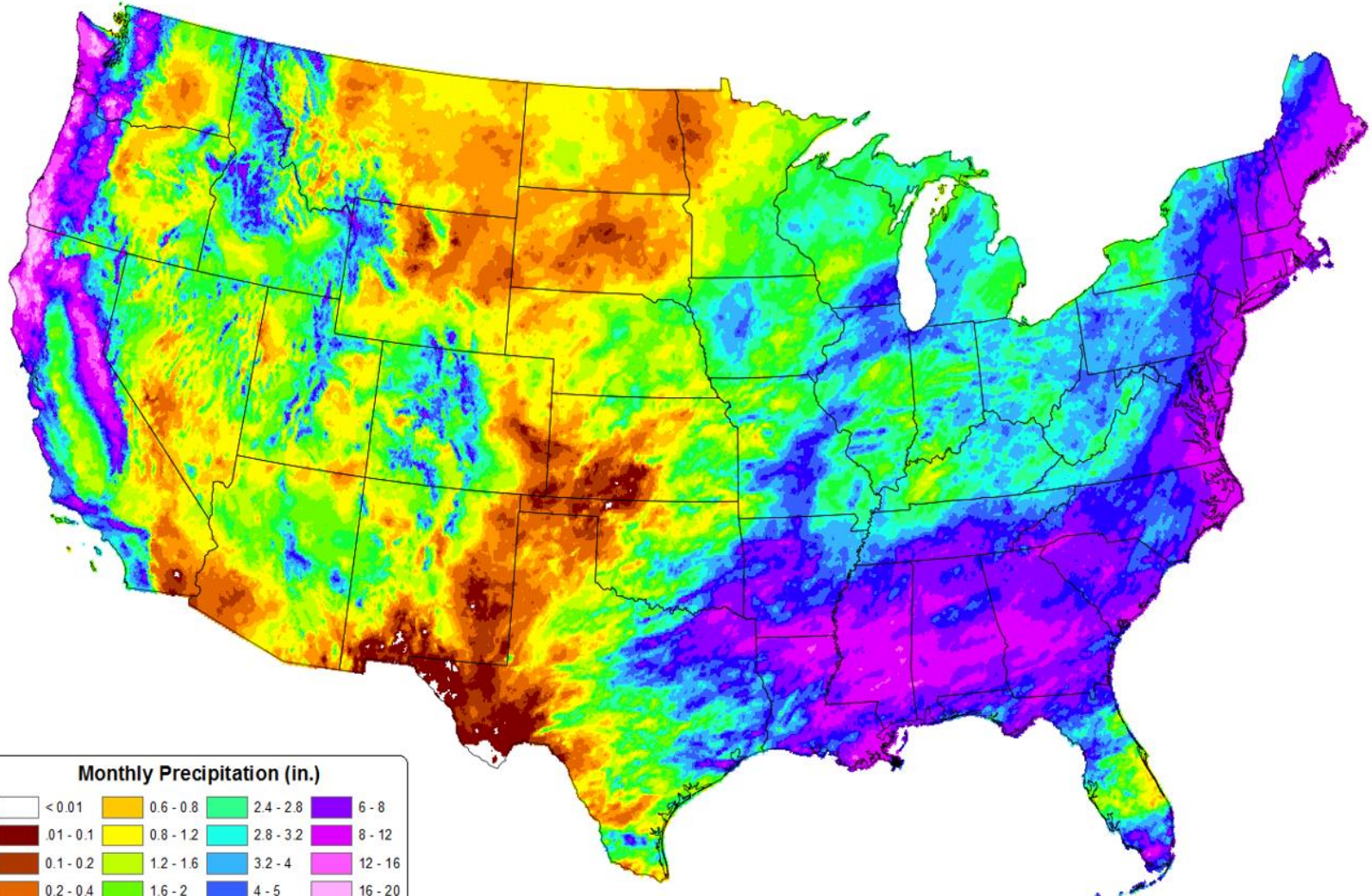
< 0	21 - 25	46 - 50	72 - 75
0 - 3	25 - 28	50 - 54	75 - 79
3 - 7	28 - 32	54 - 57	79 - 82
7 - 10	32 - 36	57 - 61	82 - 86
10 - 14	36 - 39	61 - 64	86 - 90
14 - 18	39 - 43	64 - 68	> 90
18 - 21	43 - 46	68 - 72	

# Total Precipitation for March 2024

Total Precipitation: 01 Mar 2024 - 31 Mar 2024

Period ending 7 AM EST 31 Mar 2024

(Map created 01 Apr 2024)



## Monthly Precipitation (in.)

< 0.01	0.6 - 0.8	2.4 - 2.8	6 - 8
0.01 - 0.1	0.8 - 1.2	2.8 - 3.2	8 - 12
0.1 - 0.2	1.2 - 1.6	3.2 - 4	12 - 16
0.2 - 0.4	1.6 - 2	4 - 5	16 - 20
0.4 - 0.6	2 - 2.4	5 - 6	> 20

# Selected Weather Reports March 2024

<b>Date/Time</b>	<b>Location (County)</b>	<b>Event</b>
MAR 15 826 PM	DRIPPING SPRINGS-DONA ANA	64 MPH PEAK WIND GUST
MAR 15 140 PM	SAN AUGUSTIN PASS-DONA ANA	62 MPH PEAK WIND GUST
MAR 15 339 AM	HIGH ROLLS-OTERO	59 MPH PEAK WIND GUST
MAR 15 710 PM	NORTH LORDSBURG PLAYA-HIDALGO	54 MPH PEAK WIND GUST
MAR 15 115 AM	ALAMOGORDO ARIPORT-OTERO	45 MPH PEAK WIND GUST
MAR 15 358 PM	DEMING AIRPORT-LUNA	44 MPH PEAK WIND GUST
MAR 14 1115 PM	LAS CRUCES AIRPORT-DONA ANA	43 MPH PEAK WIND GUST
MAR 14 1120 PM	SANTA TERESA NWS-DONA ANA	41 MPH PEAK WIND GUST
MAR 15 515 PM	SILVER CITY MTN VIEW-GRANT	41 MPH PEAK WIND GUST
MAR 24 925 AM	SAN AUGUSTIN PASS-DONA ANA	93 MPH PEAK WIND GUST
MAR 24 1009 AM	HIGH ROLLS-OTERO	71 MPH PEAK WIND GUST
MAR 24 945 AM	WSMR MAIN POST-DONA ANA	69 MPH PEAK WIND GUST





# Selected Weather Reports March 2024

<b>Date/Time</b>	<b>Location (County)</b>	<b>Event</b>
MAR 24 234 PM	ALAMOGORDO AIRPORT-OTERO	49 MPH PEAK WIND GUST
MAR 24 340 PM	LORDSBURG PLAYA MP11	49 MPH PEAK WIND GUST
MAR 24 415 PM	CLOUDCROFT-OTERO	46 MPH PEAK WIND GUST
MAR 24 1144 AM	CHAPARRAL FIRE STATION-DONA ANA	45 MPH PEAK WIND GUST

# Special Features

[www.weather.gov/epz/elpwindrosedata](http://www.weather.gov/epz/elpwindrosedata)

Month: MARCH

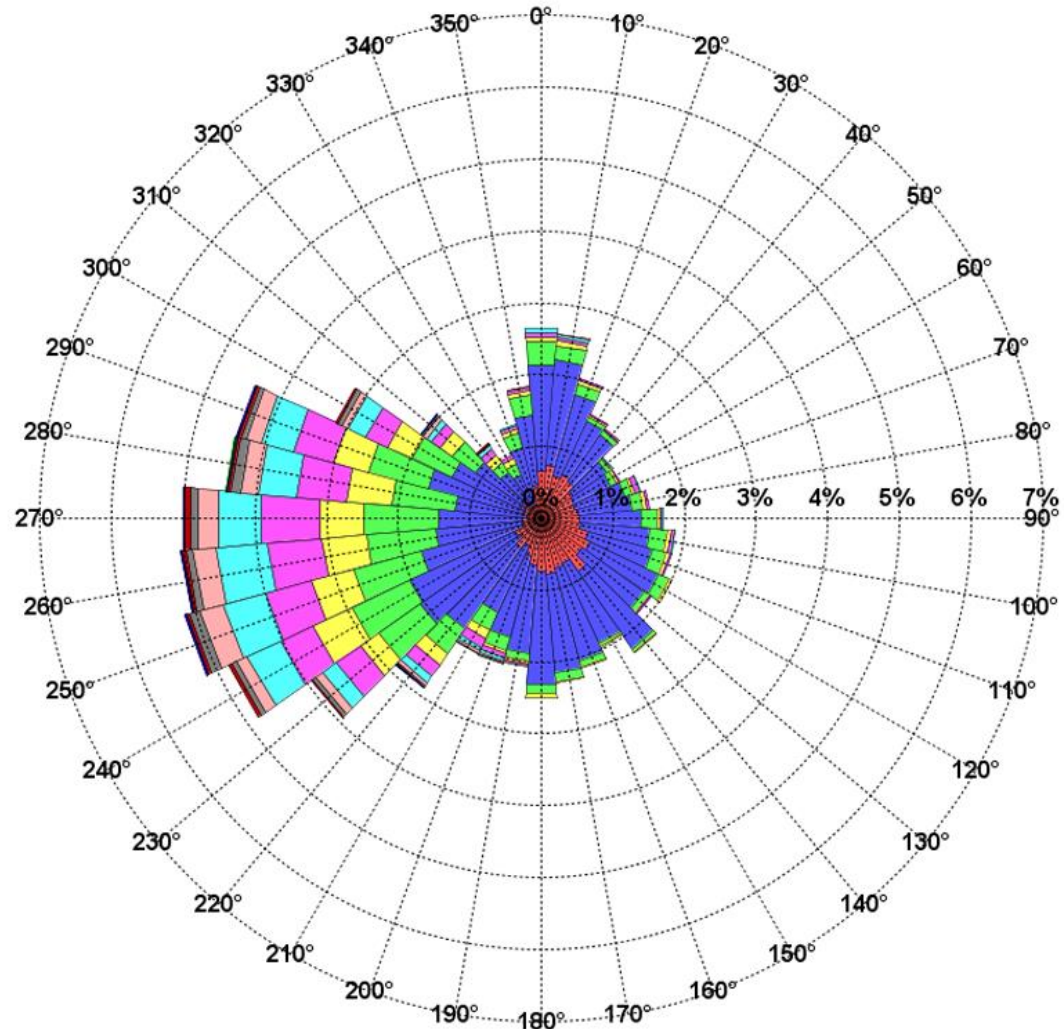
Calm: 8.61%

Variable: 2.25%

## WindRose - KELP - EL PASO INTL

% Frequency of Wind Speed from a Direction

POR:19730101-20140602



Local forecast by "City, St" or ZIP code  
 Enter location ...   
[Location Help](#)

**Heavy Rain and Flash Flooding Possible Over Parts of the Eastern United States**  
 Heavy rainfall is expected over portions of the eastern United States through Thursday. Flooding and flash flooding will be possible in some areas. Click the "Read More" link for excessive rainfall forecasts from the Weather Prediction Center. [Read More >](#)

**Customize Your Weather.gov**

City, ST

Enter Your City, ST or ZIP Code

Remember Me

[Privacy Policy](#)

**NWS El Paso**  
[Weather.gov > El Paso, TX](#)

El Paso, TX  
 Weather Forecast Office

Current Hazards Current Conditions Radar Forecasts Rivers and Lakes Climate and Past Weather **Local Programs**

**Today**

**Wednesday**  
 Warmer with a Few Afternoon Storms  
 Weather Forecast Office  
 El Paso, TX  
 September 27, 2016 4:43 PM

Local forecast by "City, St" or ZIP code  
 Enter location ...   
[Location Help](#)

**Heavy rain expected across the Mid-Atlantic region and central Appalachians.**  
 Heavy rainfall is possible over portions of the eastern United States today, with the highest risk across the Mid-Atlantic and central Appalachians. Click the "Read More" link for excessive rainfall forecasts from the Weather Prediction Center. Afternoon showers and thunderstorms are possible over portions of the Southwest and southern Rockies through Friday. [Read More >](#)

**Customize Your Weather.gov**

City, ST

Enter Your City, ST or ZIP Code

Remember Me

[Privacy Policy](#)

**Monthly Weather Digest**  
[Weather.gov > El Paso, TX > Monthly Weather Digest](#)

El Paso, TX  
 Weather Forecast Office

Current Hazards Current Conditions Radar Forecasts Rivers and Lakes Climate and Past Weather **Local Programs**

Southern New Mexico and Far West Texas has a variety of weather from month to month. Conditions can range from extreme drought, to heavy flooding rains, from record breaking heat to bone chilling cold. Below you will find past weather highlights from the area that the NWS office in Santa Teresa NM covers. This area includes the following counties in New Mexico: Hudspeth, Grant, Luna, Sierra, Doña Ana and Otero and the following counties in Texas: El Paso and Hudspeth.

[weather.gov/epz](#)

**Don't Forget-Current and past issues of our Weather Digest are available on our website at [www.weather.gov/epz/](http://www.weather.gov/epz/)**

**Just click on "Local Programs>Weather Digest", then choose which month's Digest to view. Also, though discontinued, don't forget to check out our back issues of Southwest Weather Bulletin.**

WEATHER DIGESTS AND BULLETINS	
Weather Digest	Southwest Weather Bulletins
<a href="#">January</a>	2005 <a href="#">Spring</a> <a href="#">Fall</a>
<a href="#">February</a>	2006 <a href="#">Spring</a> <a href="#">Fall</a>
<a href="#">March</a>	2007 <a href="#">Spring</a> <a href="#">Fall</a>
<a href="#">April</a>	2008 <a href="#">Spring</a> <a href="#">Fall</a>
<a href="#">May</a>	2009 <a href="#">Spring</a> <a href="#">Fall</a>
<a href="#">June</a>	2010 <a href="#">Spring</a> <a href="#">Fall</a>
<a href="#">July</a>	2011 <a href="#">Spring</a> <a href="#">Fall</a>
<a href="#">August</a>	2012 <a href="#">Spring</a> <a href="#">Fall</a>
<a href="#">September</a>	2013 <a href="#">Spring</a> <a href="#">Fall</a>
<a href="#">October</a>	2014 <a href="#">Spring</a> <a href="#">Fall</a>
<a href="#">November</a>	
<a href="#">December</a>	