

# Northwest Iowa Blizzard

March 19, 2025

Picture credit: Brian Burt

## Event Summary

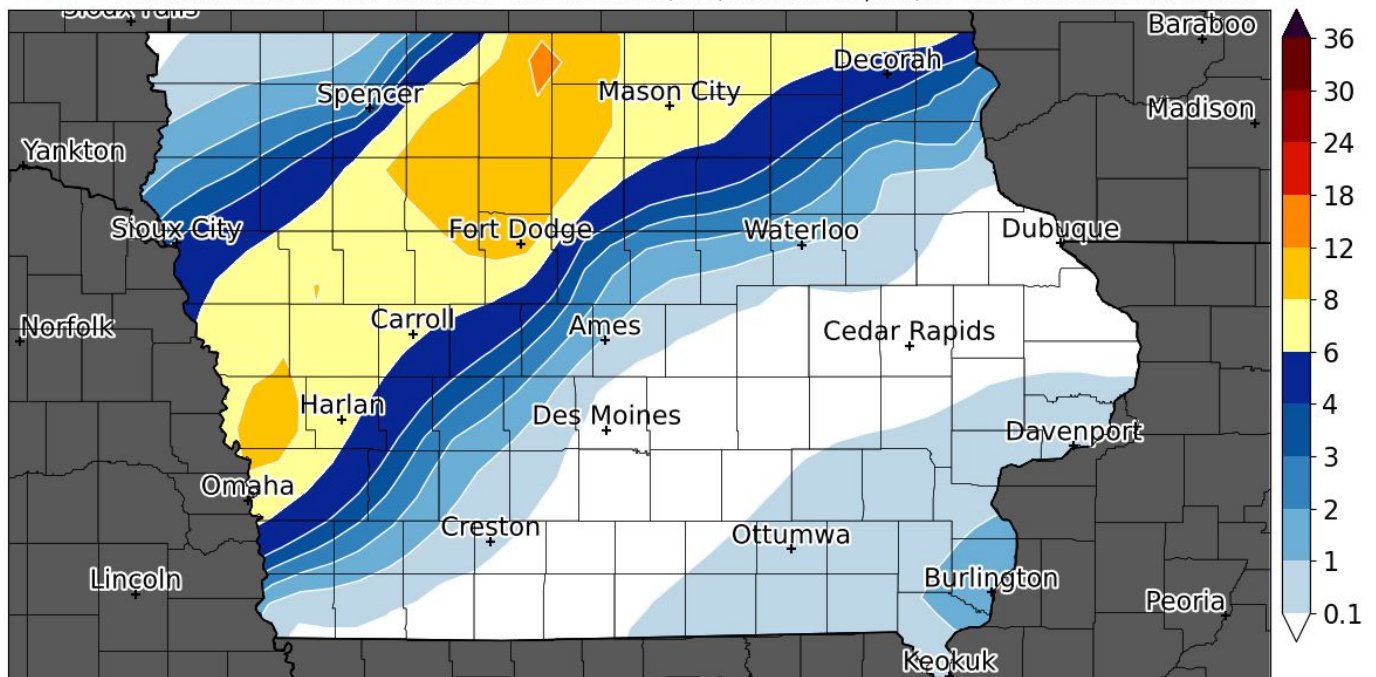
An intense low pressure system brought strong winds and blizzard conditions to northwest Iowa on March 19th. Early morning thunderstorms produced pea to quarter sized hail across central Iowa with small hail covering the ground in some locations. Northwest Iowa quickly transitioned over to snow, including thundersnow, with visibility and road conditions quickly deteriorating. Winds across the area, even outside the snow areas, gusted 45-55+ mph, including a 62 mph gust in Carroll. A band of 6-12"+ fell across northwest Iowa with heaviest amounts of 12-14" reported in Kossuth County.

## Snow Reports



### 19-20 March 2025 - IEM Snowfall Total Analysis

Snowfall totals till 8 AM 20 March 2025 from NWS COOP, LSR, CoCoRaHS Reports; IEM 2024-2025 Winter Storm #18



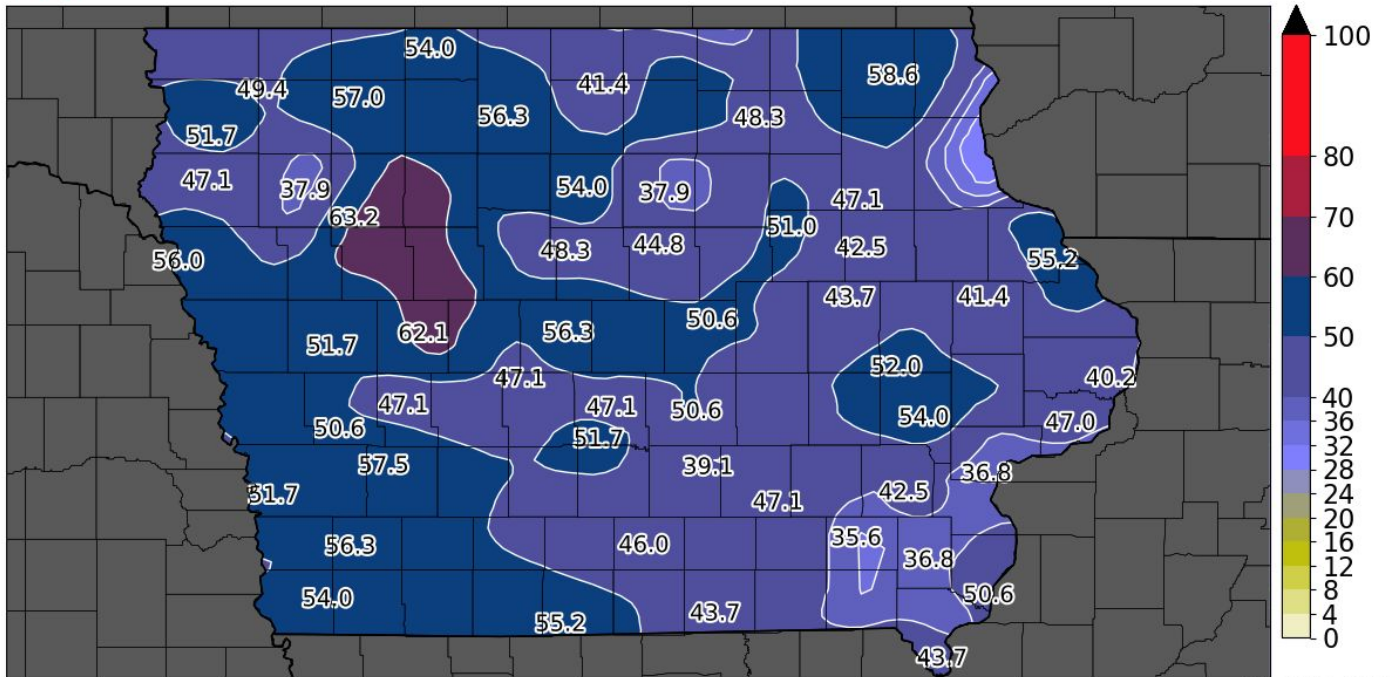
Iowa Environmental Mesonet :: generated 20 March 2025 07:10 AM

[Click image to view interactive storm report map.](#)

# Strong Winds

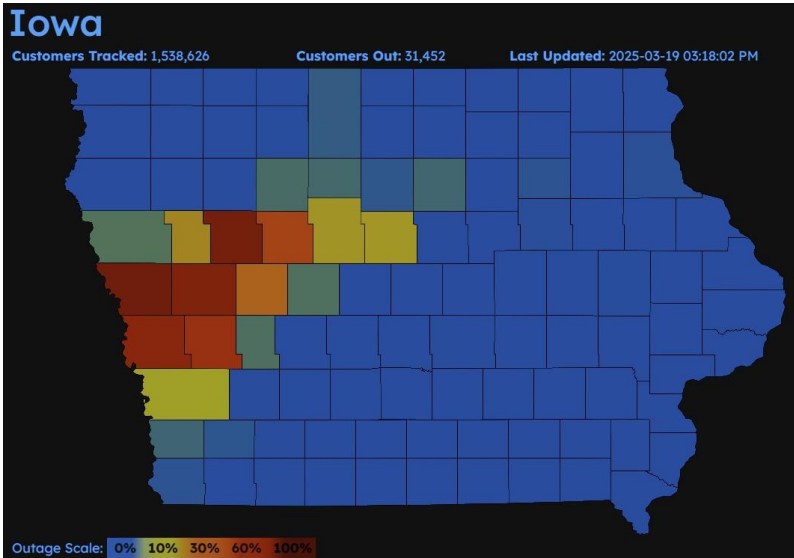


Peak Wind Gust [MPH] for Iowa on 2025-03-19



Generated at 19 Mar 2025 9:23 PM CDT in 1.64s

data units :: mph  
IEM Autoplot App #206



Above: Power outages due to strong wind and heavy snow.



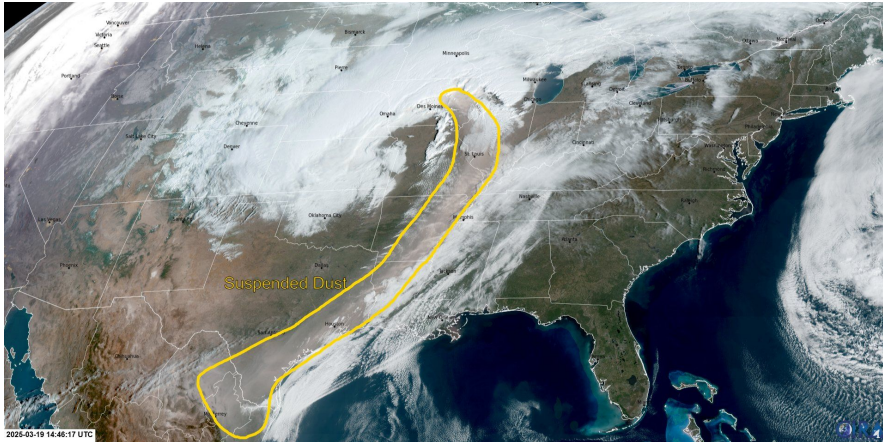
At right: Initial snowfall and sky have a distinct brown appearance due to dust and dirt that had been blown all the way from Texas and into the Midwest. This feature was clearly visible on satellite imagery.

Brown sky and snow viewed in Thornton, IA. Photo credit: X user @Farmboy8655

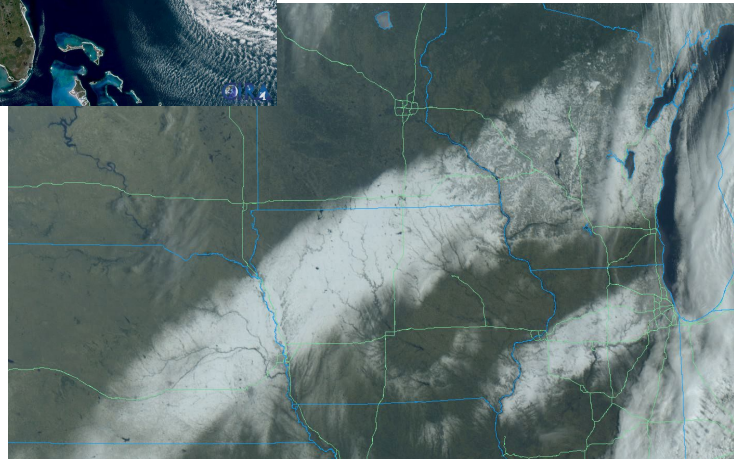


All information is PRELIMINARY. Page last updated: March 20, 2025

# Satellite Imagery



At Left: GOES “Geo Color” imagery showing a swath of dust (yellow outlined area) from Texas into the Midwest on 3/19/25.



At Right: GOES “True Color” imagery showing the swath of snow across the Midwest, from KS/NE/IA/WI on 3/20/25.

# Impacts

Dangerous travel conditions were widespread, affecting a corridor from Kansas to Nebraska, Iowa, and into Wisconsin. DOTs across the Midwest, including Iowa, designated several roadways as “Travel Not Advised” with zero visibility and drifting snow making for impassable conditions.

**Poor Travel Across Many States!** March 19, 2025 5:50 PM

Roads impassable over portions of western Iowa - Travel Not Advised

Blizzard conditions will continue into the evening.

Travel issues continue over Kansas, Nebraska, Iowa, Minnesota and Wisconsin this evening. Best to wait this out until tomorrow, when conditions improve.

**Poor Travel this evening from Kansas all the way to Upper Michigan!**

Image courtesy of 511ia.org - Iowa Department of Transportation

National Oceanic and Atmospheric Administration  
National Weather Service  
Des Moines, Iowa

**CALLS FOR SERVICE**  
March 19th (12:00 am - 8:00 pm)

**74**  
Crashes Covered

**268**  
Motorist Assists

Iowa State Patrol calls for service - 3/19/2025.

